



THE BROYER RESIDENCE

TALIA KLEIN WITH STUDIO AUREA

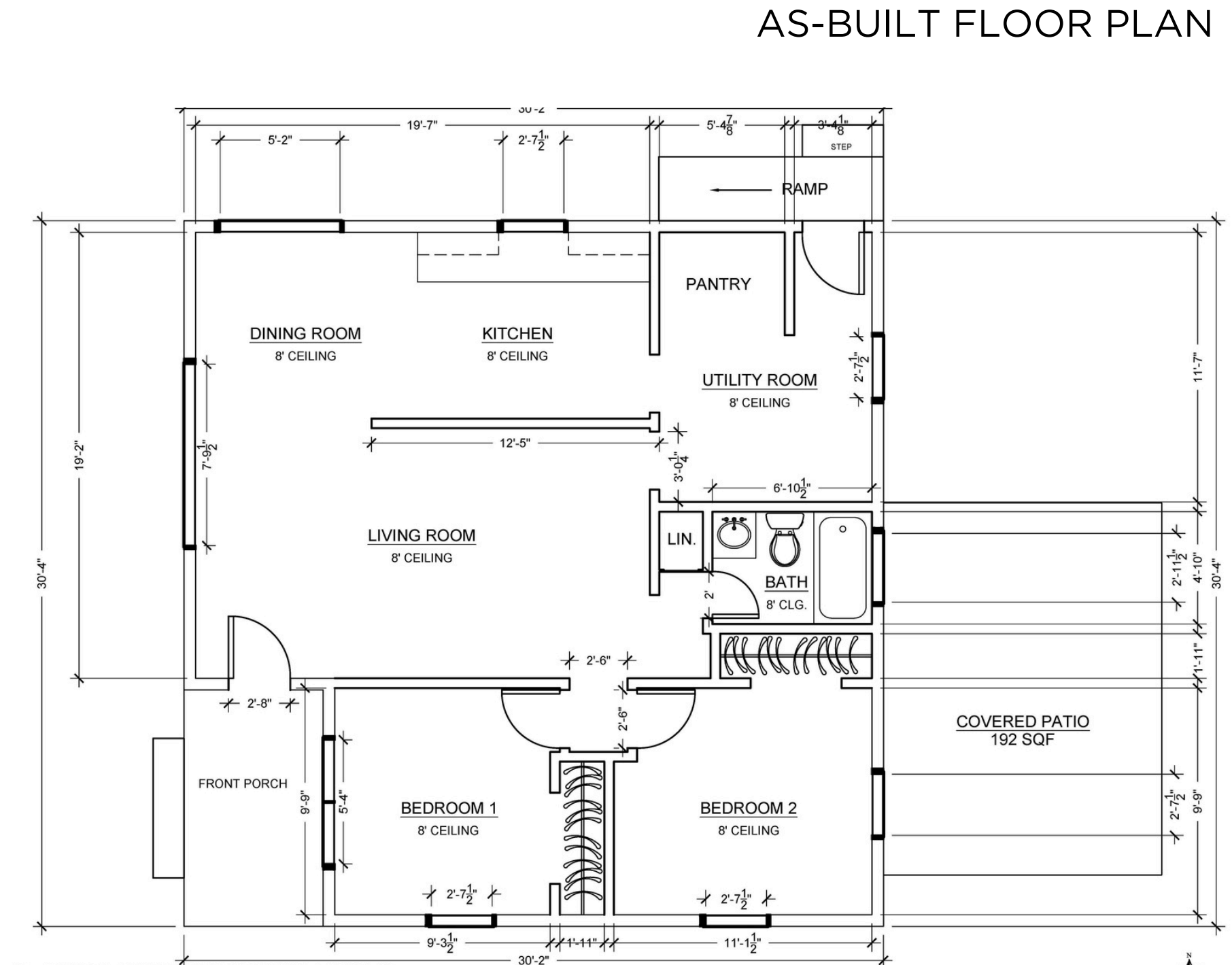
ABOUT



THIS RESIDENTIAL REMODEL PROPOSAL WAS COMPLETED IN ASSOCIATION WITH THE INTERIOR DESIGN COLLECTIVE STUDIO AUREA. STUDIO AUREA IS A GROUP OF DESIGNERS COMMITTED TO TRANSFORMING INACCESSIBLE ENVIRONMENTS INTO SECURE, COMFORTABLE, AND ADAPTABLE SPACE.

FLOOR PLANS

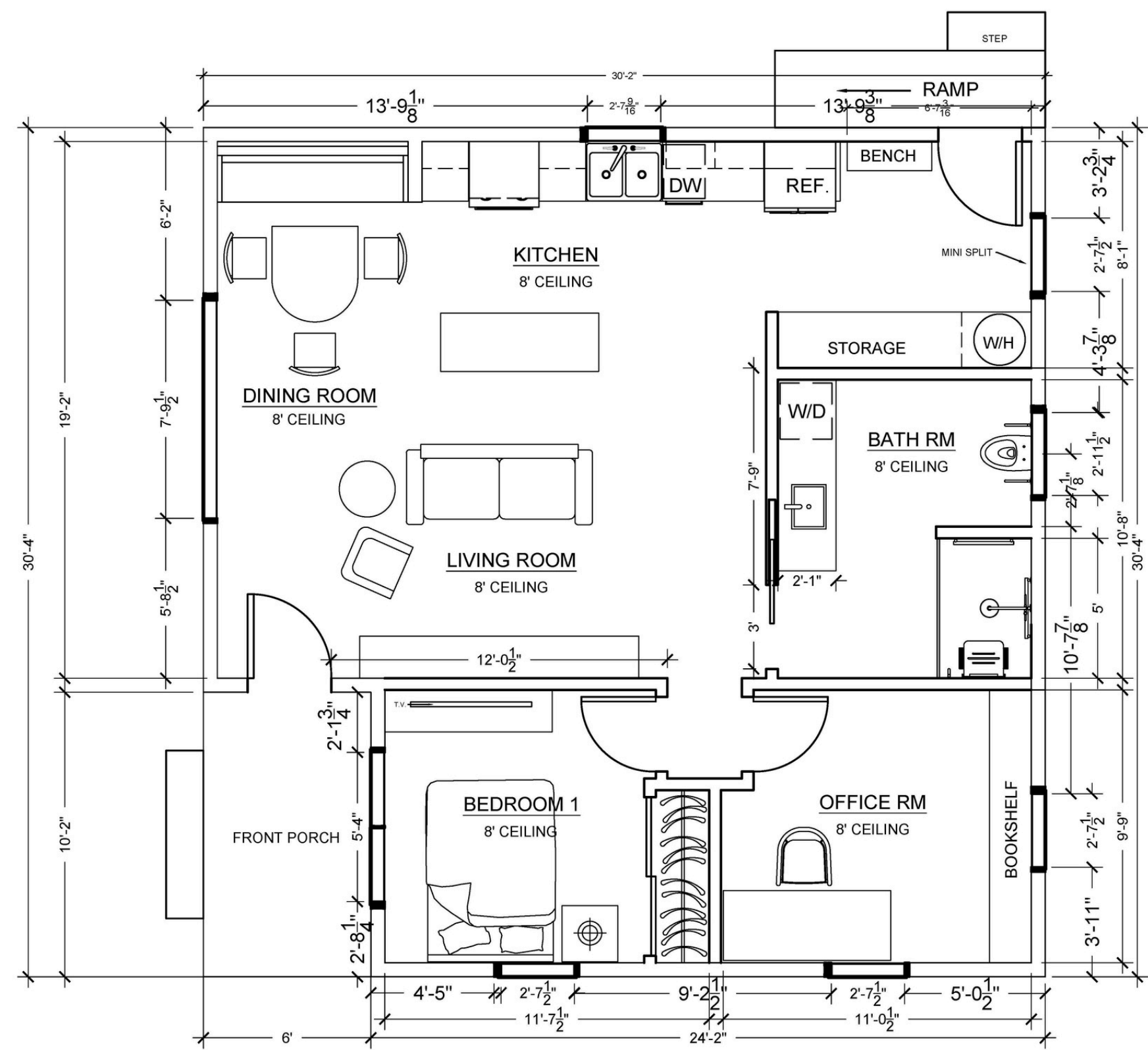
OUR OBJECTIVE IN THIS REMODEL WAS TO ENSURE THE SAFETY AND EASE OF ACCESS FOR OUR CLIENT AS SHE AGES IN PLACE IN HER ARIZONA HOME.



THROUGH EXTENSIVE CONVERSATIONS AND COLLABORATION, WE WERE ABLE TO CONDUCT NEEDS ASSESSMENTS, TAKE MEASUREMENTS, AND PROPOSE SOLUTIONS REMOTELY.

FLOOR PLANS

PROPOSED
FLOOR PLAN AND
FURNITURE PLAN



STONE TILE
*KITCHEN
BACKSPLASH*



FLOOR LAMP
LIVING ROOM



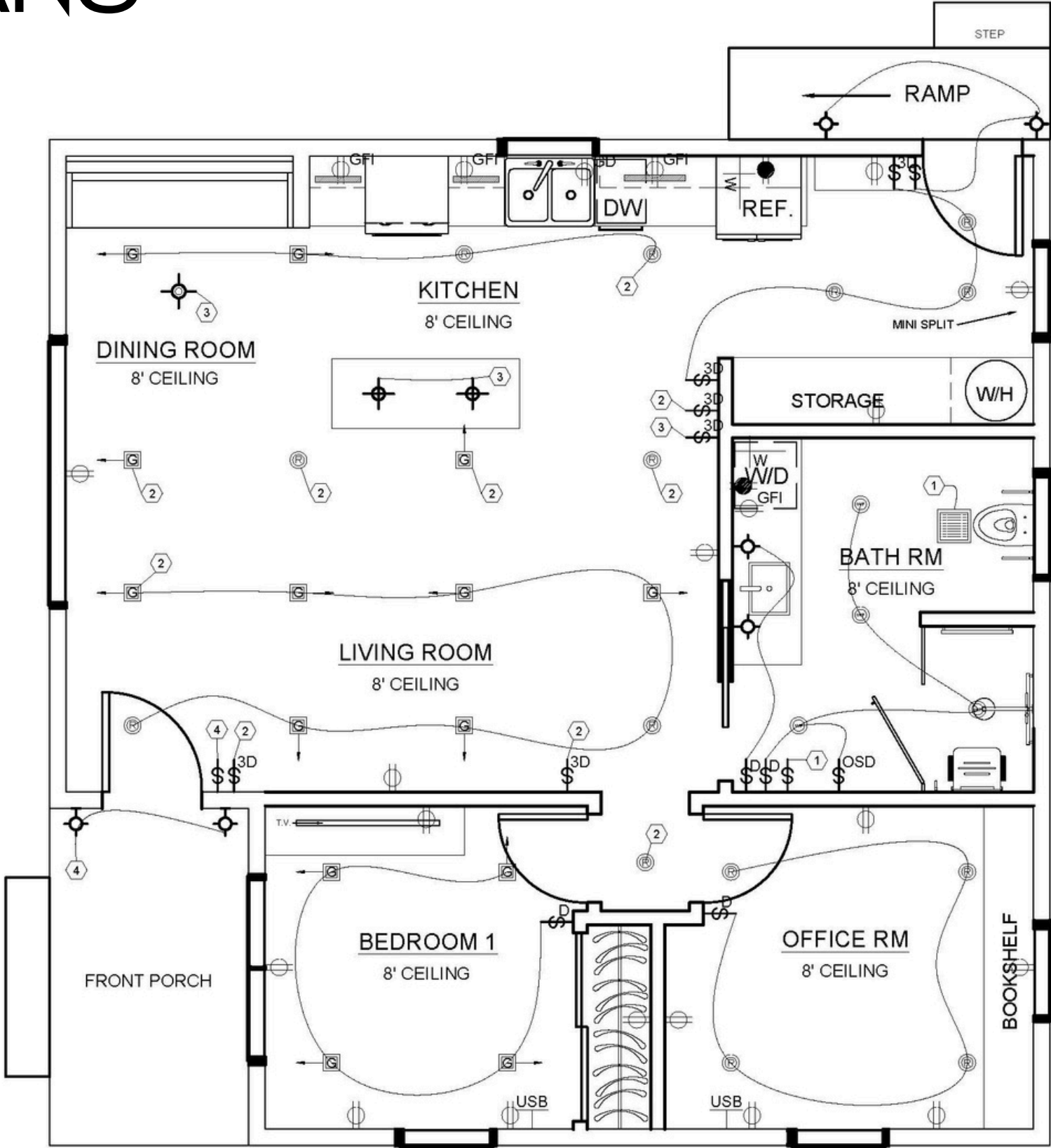
PORCELAIN TILE
*BATHROOM
FLOORING*



THROW PILLOW
*BACKYARD
PATIO*



FLOOR PLANS



LIGHTING LEGEND:

	FAN
	UNDER CABINET LED STRIP LIGHT
	4" RECESSED LED FIXTURE
	4" RECESSED LED FIXTURE (WET LOCATION RATED)
	4" RECESSED LED GIMBAL
	PENDANT LIGHT
	WALL SCONCE
	CHANDELIER

ELECTRICAL LEGEND:

	110 OUTLET
	GARBAGE DISPOSAL OUTLET
	GROUND FAULT INTERRUPTER OUTLET
	FRIDGE/FREEZER WATER LINE
	220 VOLT OUTLET
	SWITCH
	SWITCH ON DIMMER
	3 WAY SWITCH
	3 WAY SWITCH ON DIMMER
	OCCUPANCY SENSOR
	OCCUPANCY SENSOR W/DIMMER
	USB OUTLET
	SWITCHING GRP SYM. DENOTES SWITCH GRP NO.

ELECTRICAL PLAN

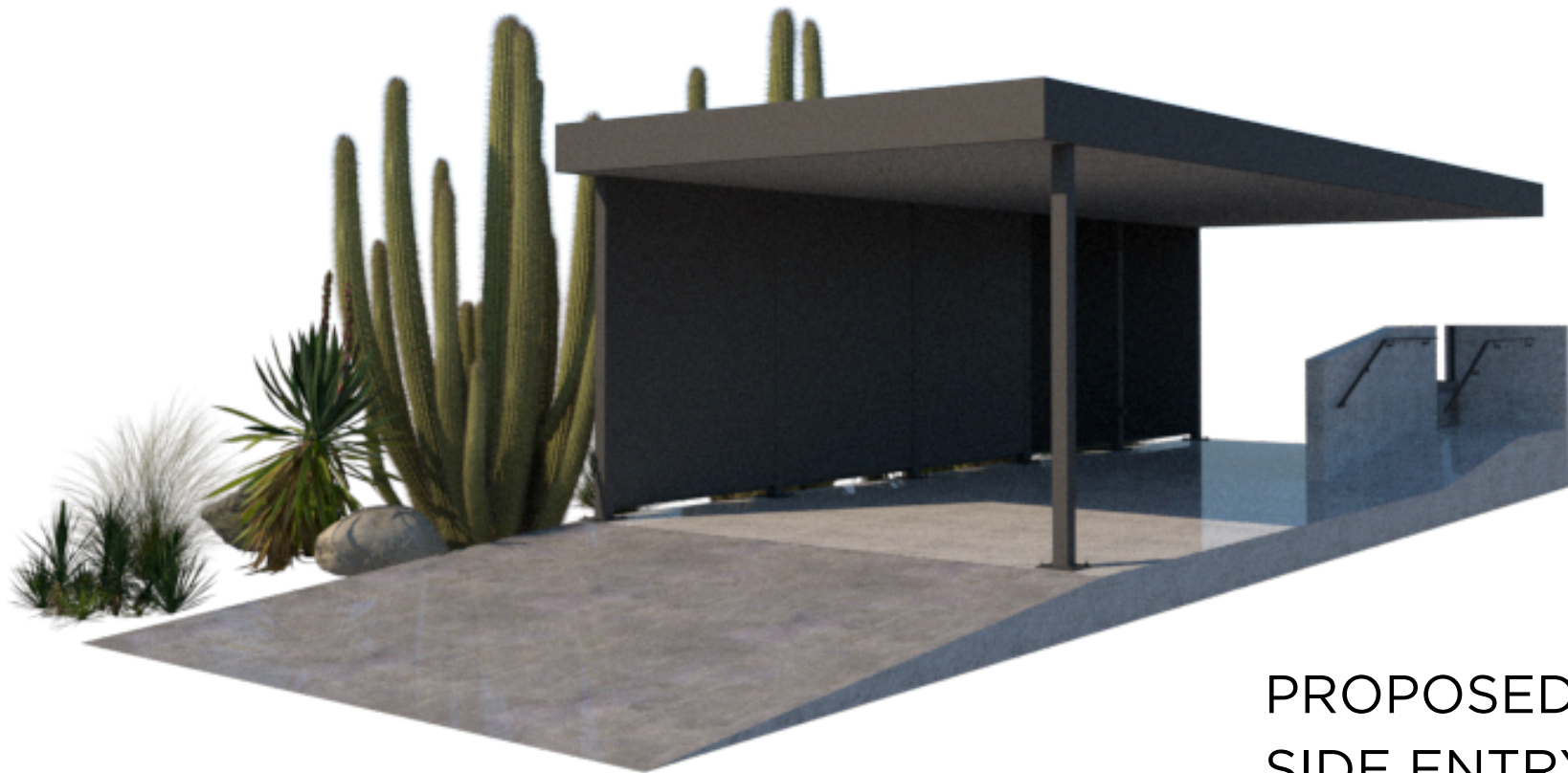
BATHROOM



PROPOSED DESIGN SOLUTIONS OFFER A STYLISH BATHROOM, COMPLETE WITH ACCESSIBILITY FEATURES AND A BUILT-IN WASHER/DRYER. EMPHASIS PUT ON FUNCTIONALITY WAS NOT AT THE COST OF VISUAL AESTHETICS, AND WE WERE ABLE TO INCORPORATE A NUMBER OF ADDITIONAL, PERSONAL TOUCHES INSPIRED BY THE DESERT ENVIRONMENT IN WHICH THE HOME RESIDES.

OUTDOOR ACCESS

EXISTING CONDITIONS ON THE PROPERTY POSED A HAZARD TO THE CLIENT AND THEIR MOBILITY. BY INCLUDING RAMPS ON THE FRONT AND SIDES OF THE HOME AT A 1:12 PITCH, ACCESS TO THE HOME IS MADE SAFER FOR ALL LEVELS OF ABILITY.



PROPOSED CARPORT &
SIDE ENTRY



PROPOSED FRONT ENTRY