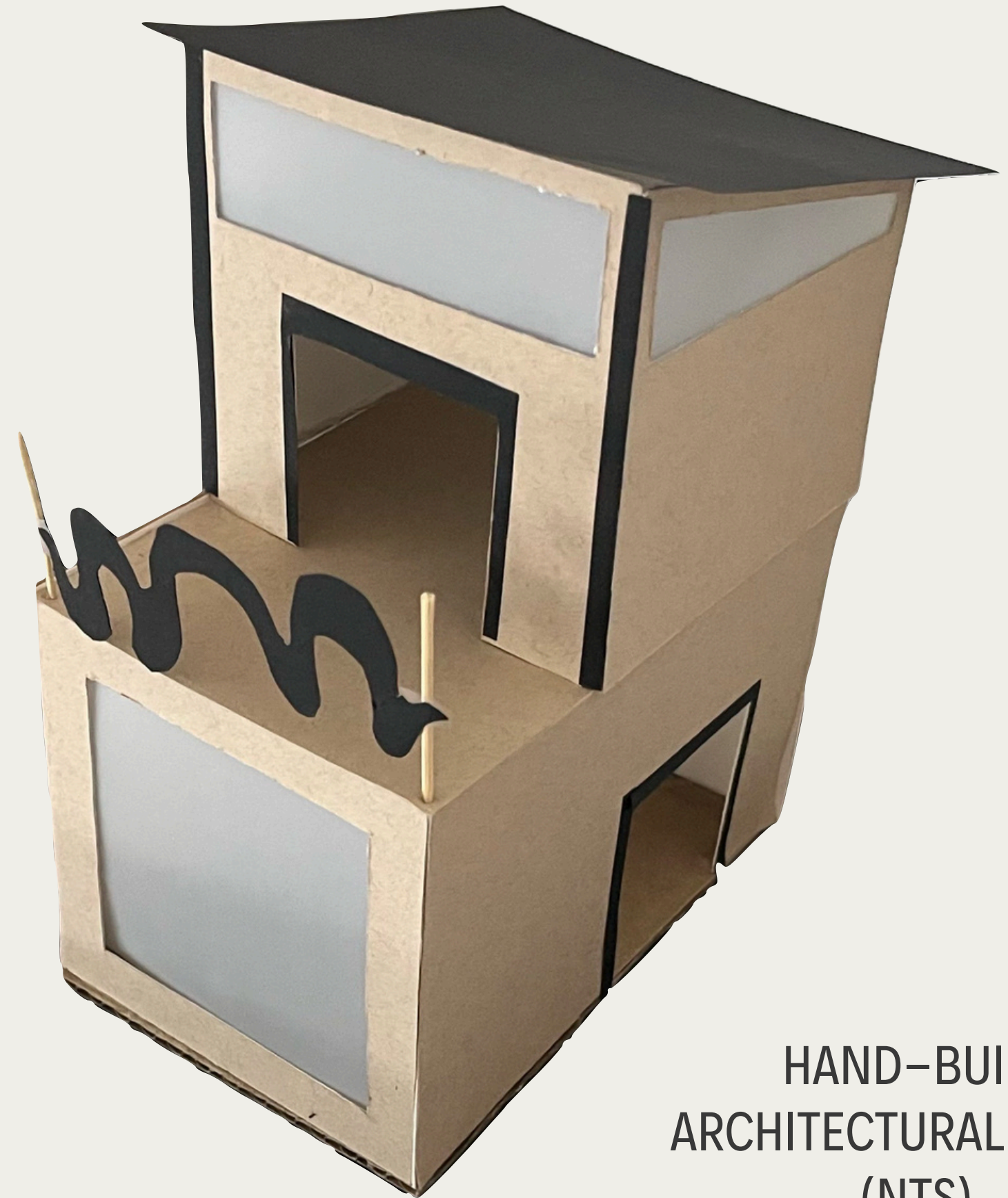


the coastal cabin *



HAND-BUILT
ARCHITECTURAL MODEL
(NTS)

about^x

SITUATED ON A HILLSIDE OVERLOOKING THE SOUTHERN NEW ZEALAND COAST, THIS 380 SQUARE FOOT TINY HOME IS A SIMPLE DELIGHT. FINISH MATERIALS, SHOWN HERE, REFLECT THE COLORS OF THE SURROUNDING NATURAL LANDSCAPE.



BAMBOO GRANITE
KITCHEN COUNTER
FINISH



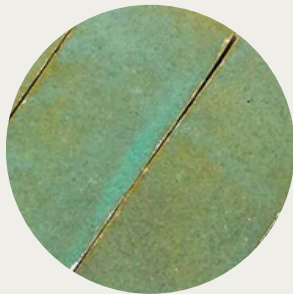
“HAZELWOOD”
KITCHEN CABINET
FINISH



KAHIKATEA/WHITE
PINE FLOORING
FINISH



PORCELAIN TILE
BATHROOM
FLOORING FINISH



MOROCCAN
SHOWER TILE



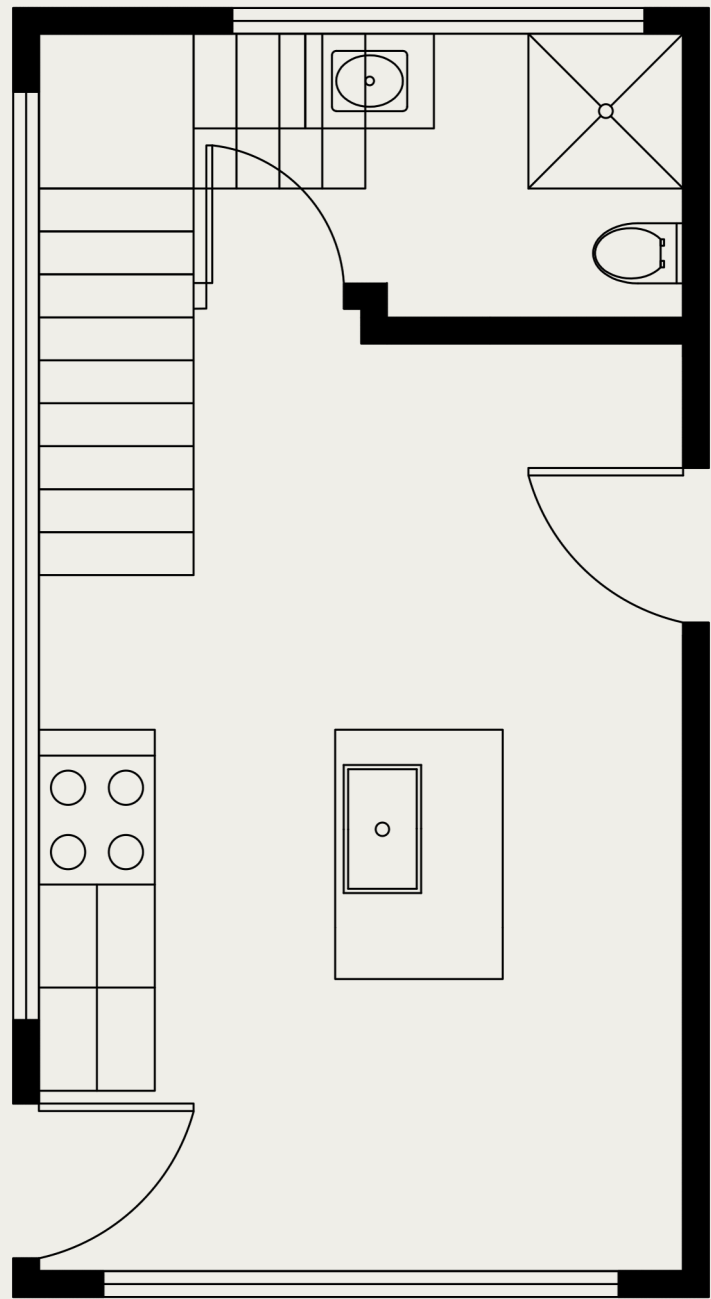
SLATE
BATHROOM
COUNTERTOP
FINISH



“MARBLE
CANYON”
BATHROOM
WALL FINISH

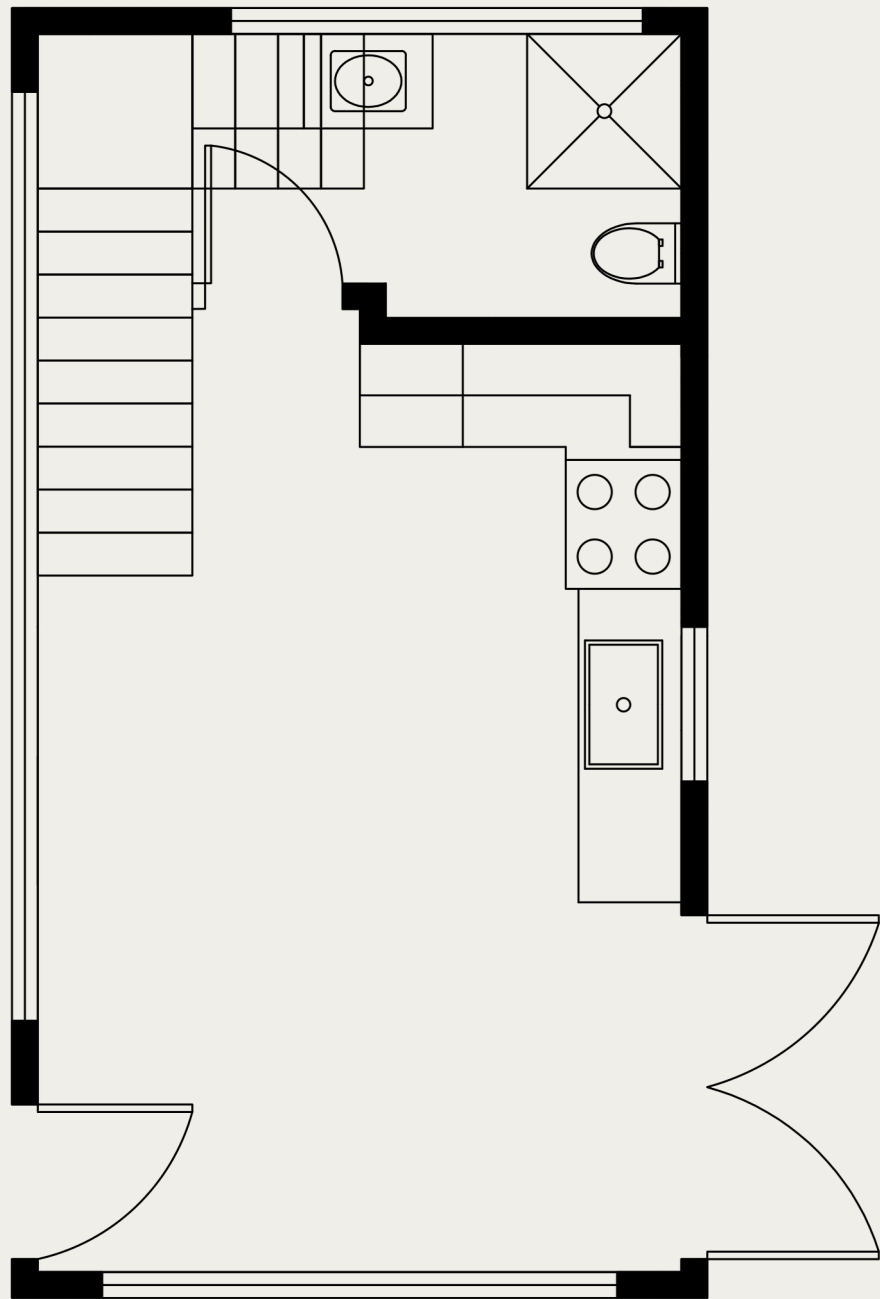
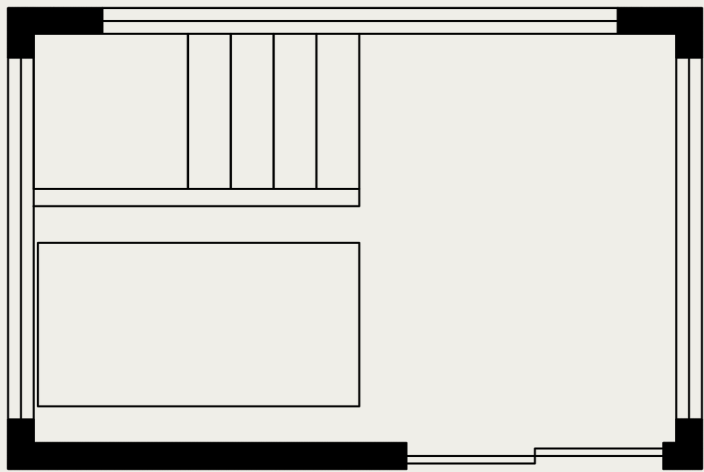
TAKING BOTH COMFORT AND SUSTAINABILITY INTO CONSIDERATION, THIS BUILD MAXIMIZES SPACE AND MINIMIZES ENVIRONMENTAL IMPACT.

construction plans^x

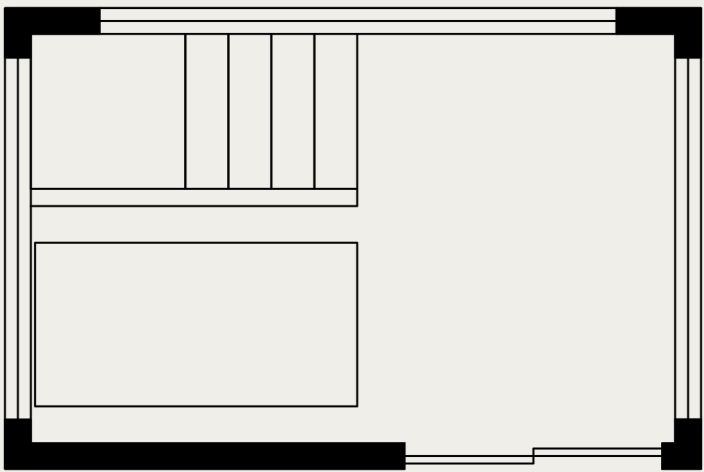


original

EASE OF MOVEMENT THROUGH THE LIMITED SPACE WAS A PRIORITY IN EARLY CONFIGURATION. THE INITIAL INCLUSION OF A KITCHEN ISLAND DID NOT FACILITATE THIS GOAL, RESULTING IN THE CHANGED KITCHEN PLACEMENT



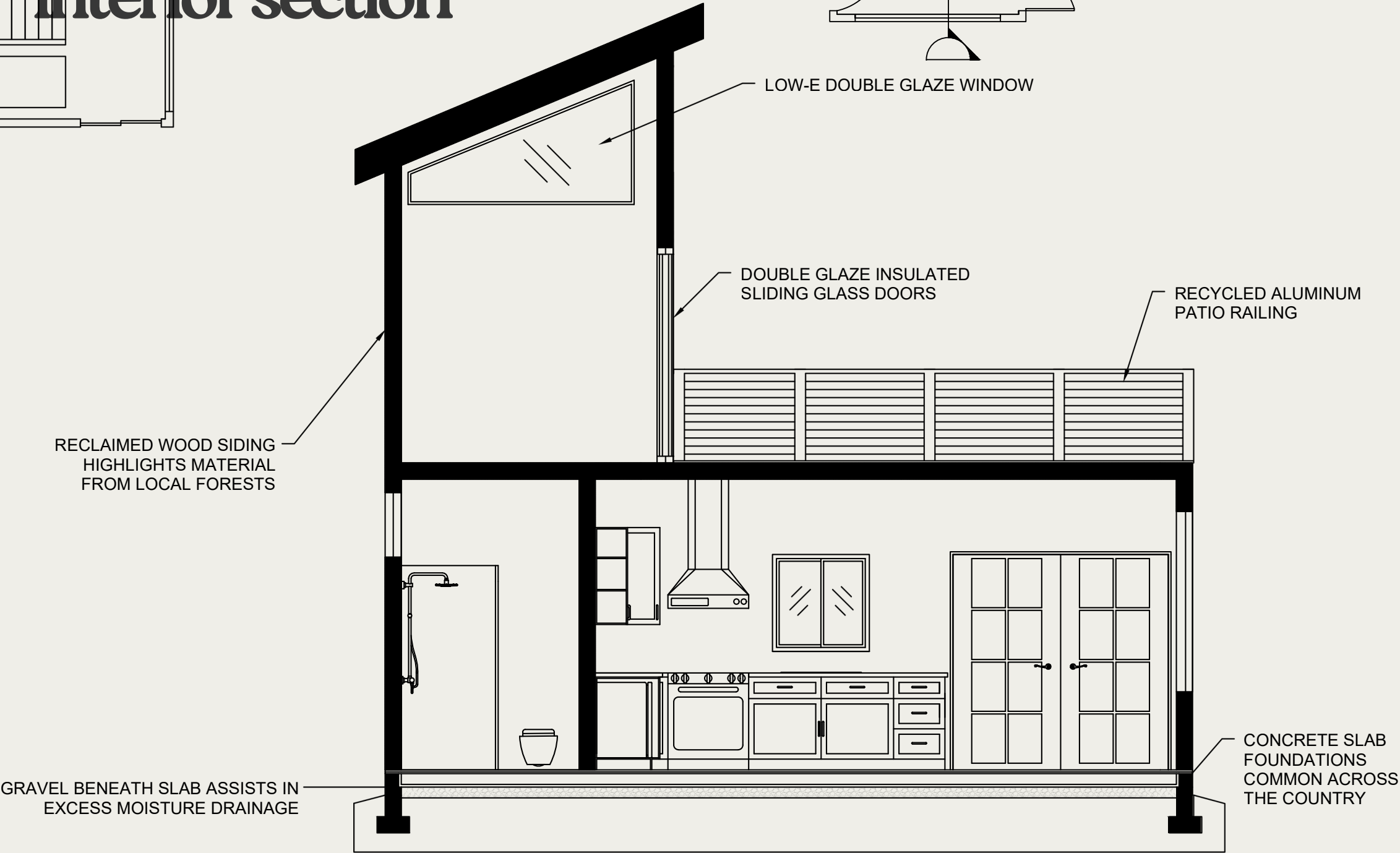
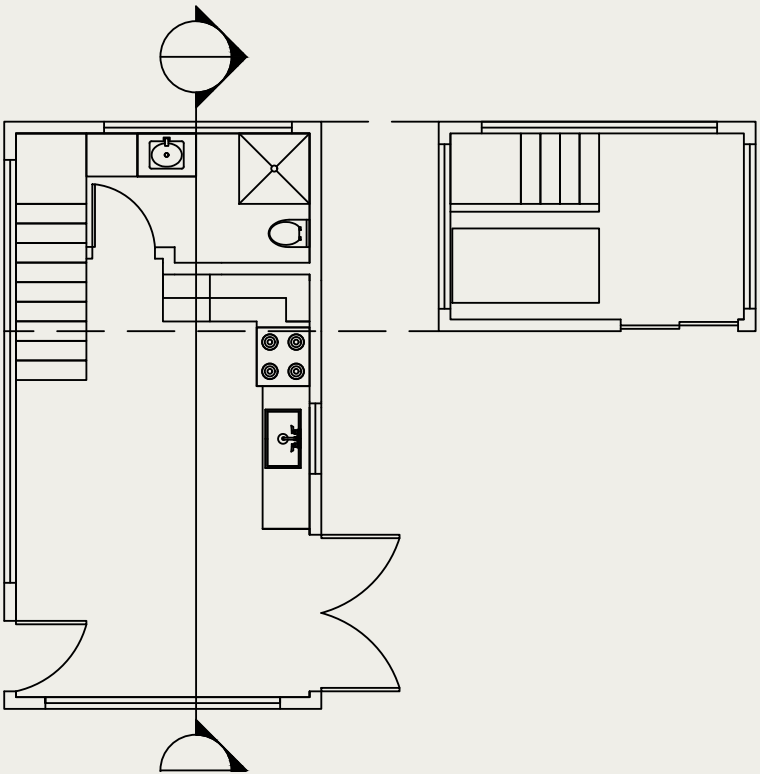
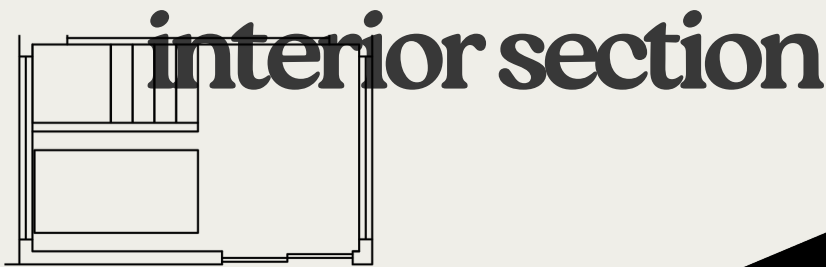
revised



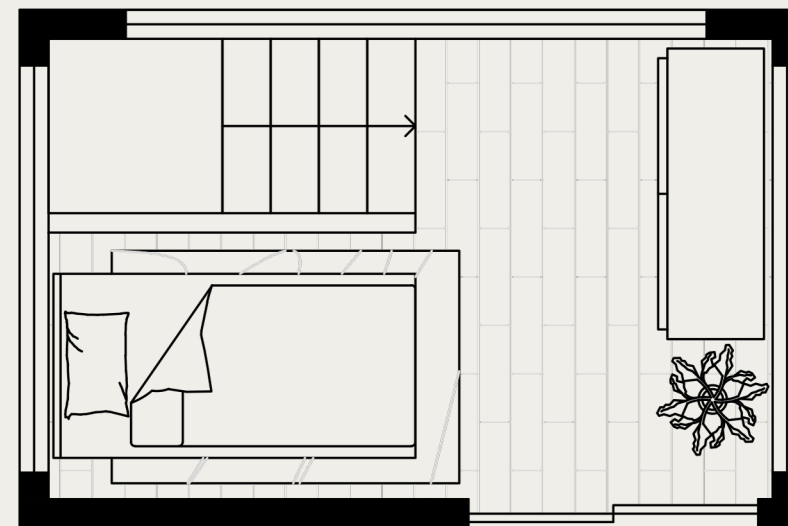
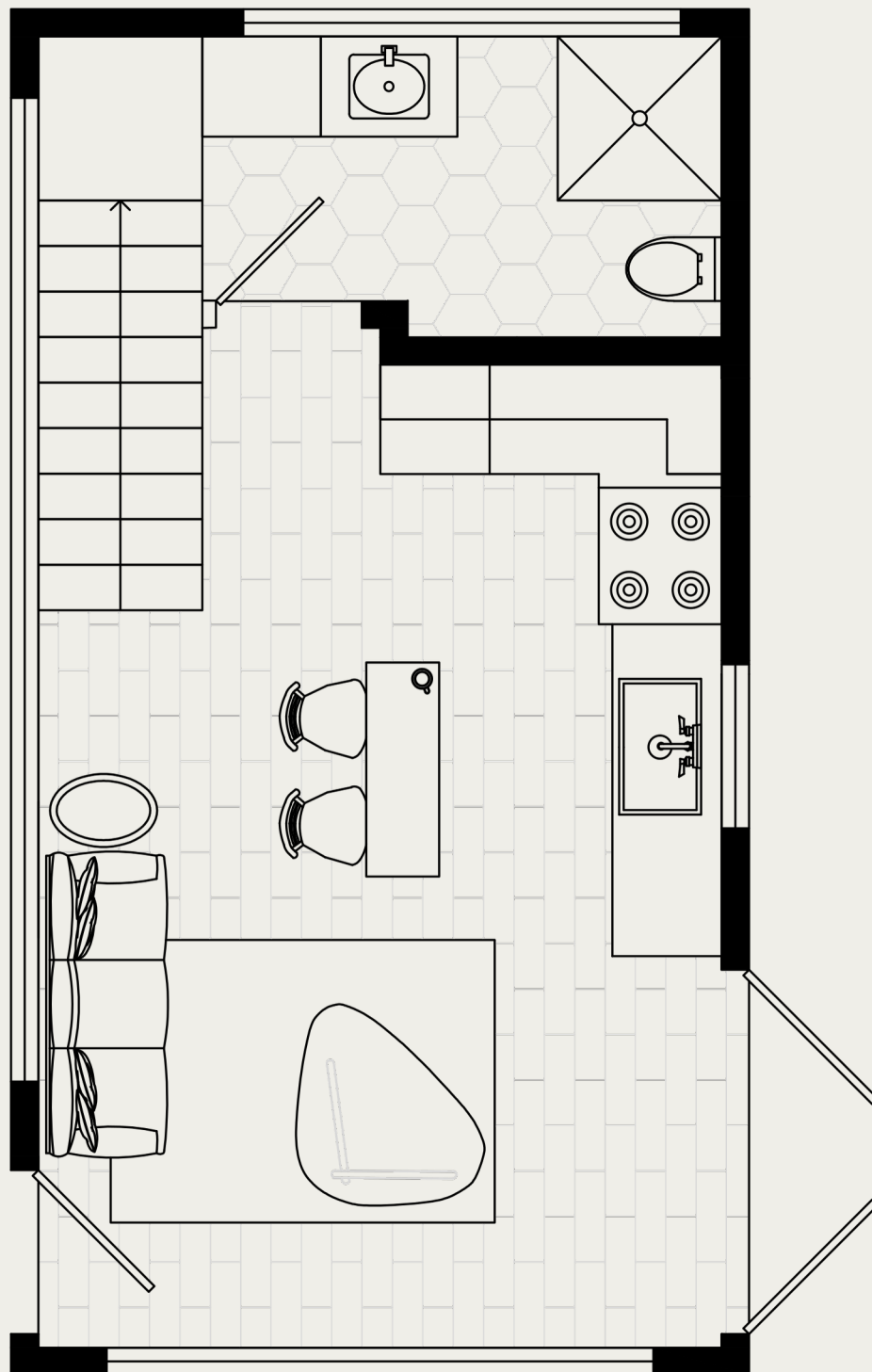
THIS SOLUTION CREATES MORE STORAGE SPACES, AS WELL AS MORE CONVENIENTLY LOCATED ACCESS POINTS FROM THE FRONT AND BACK ENTRY.

section view^x

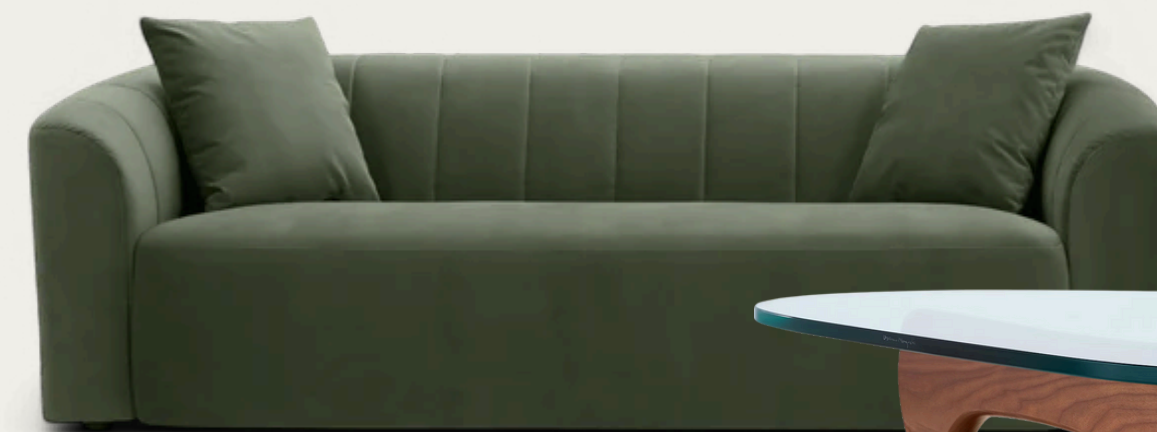
ENVIRONMENTAL
ASPECTS OF THE
CONSTRUCTION
EMPHASIZE A
MINIMIZATION OF HEAT
TRANSFER, AS WELL AS
INTEGRATION OF
LOCALLY SOURCED,
RENEWABLE MATERIALS.



furniture layout^x



MINIMAL YET FUNCTIONAL PIECES IN THE HOME
CONTRIBUTE TO THE EASEFUL NATURE OF THE SPACE.
ORGANIC SHAPES FURTHER PROMOTE COMFORT OF
MOVEMENT, AND RELATE TO THE ENDEMIC FLORA JUST
BEYOND THE WALLS.



living room sofa



coffee table

counter barstools

