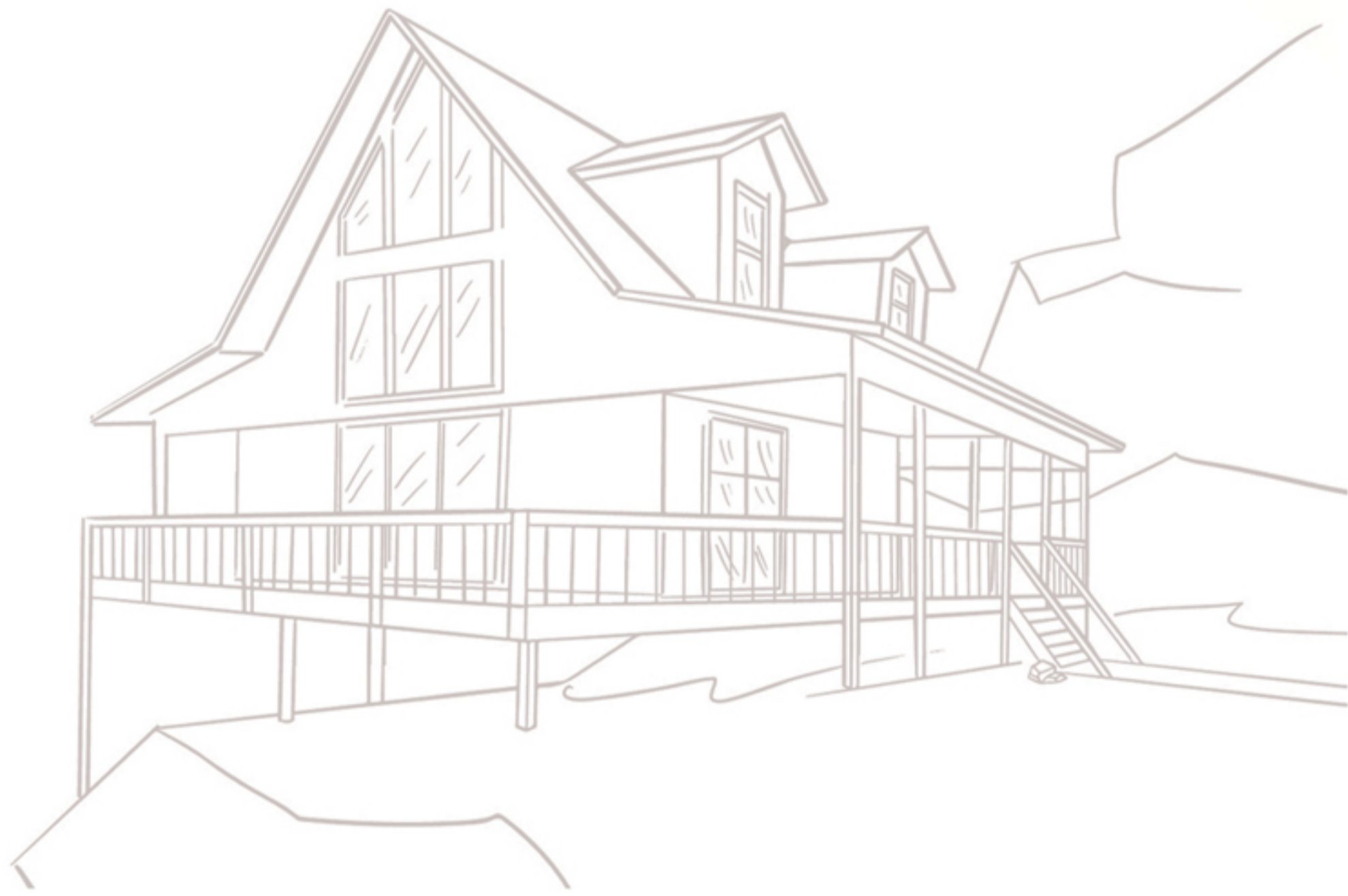


An DTCP approved Layout



**Jagathi<sup>2</sup>**  
**VILLAS**  
For Better Living



# Dream Big, Live Happily

Invest in plots, Invest in growth

## Stay Fresh, Stay New, Stay Evergreen

Sree Lakshmi Padmavathi Developers, Kadapa (Reg.No.108/2021, developed a venture by name Jagathi Villas-2 @ Pabbapuram and its fully developed plots ranging approxiamately from 4 cents to 6 cents designed the space. Build a villa, a cottage or a ranch house the way you like to. Create an asset that you will enjoy for years to come.

### **A Great Location :**

Jagathi Villas-2 is located in Pabbapuram, Kadapa - a premium, rapidly developing suburb. Close to Pulivendula Outer Ring Road, Opp. Sakshi Paper. Takes just 10 minutes from Kadapa City. A great location ensures value appreciation.

### **Safe Investment :**

Fully secured, free from litigation, fully developed plots at Jagathi Villas-2. It also has an infrastructure that is designed to support a trouble-free and hassle-free development of your property.

### **High Return on Investment (ROI) :**

Your property in Jagathi Villas - 2 can earn a decent income and your investment will increase in value dramatically and sometime even exponentially Jagathi Villas-1 & Brundavanam Colony are well developed ventures in and around this venture.

**Kadapa's  
Finest  
DTCP  
APPROVED  
LAYOUT**



*Beautiful Blending Amenities of* **Jagathi<sup>2</sup>**  
**VILLAS**  
 For Better Living



Annamaya Urban Development Authority (AUDA) & DTCP Approved layout.



All 40' Feet Roads (12 Mtrs).



All Cement (CC) Roads with plantation.



Complete Underground Drainage.



Water tap connection for each plot.



LED street lights.



Electronic Security gate with CCTV Surveillance



1 acre greenary park area including childrens playground



Either Side roads covered with Highway cement curbs.



Walking Track in peaceful nature



Solar Fencing Compound Wall.



Front Grand Arch.



Granite Chairs.



Rain water harvesting pits.



Clear Legal Opinion



Electricity Power Supply.



Very less fee for House Construction



All Plots 100% Vastu.



Easy Bank Loans Available.



Gazibo



# Site Layout

LAY-OUT APPROVAL FROM **AUDA**



| UTILITIES |    |
|-----------|----|
| 18        | 19 |
| 17        | 20 |
| 16        | 21 |
| 15        | 22 |
| 14        | 23 |
| 13        | 24 |
| 12        | 25 |
| 11        | 26 |
| 10        | 27 |

|    |    |
|----|----|
| 37 | 38 |
| 36 | 39 |
| 35 | 40 |
| 34 | 41 |
| 33 | 42 |
| 32 | 43 |
| 31 | 44 |
| 30 | 45 |
| 29 | 46 |
| 28 | 47 |

|    |    |
|----|----|
| 57 | 58 |
| 56 | 59 |
| 55 | 60 |
| 54 | 61 |
| 53 | 62 |
| 52 | 63 |
| 51 | 64 |
| 50 | 65 |
| 49 | 66 |
| 48 | 67 |

| 2% AMENITY |    |
|------------|----|
| 83         | 84 |
| 82         | 85 |
| 81         | 86 |
| 80         | 87 |
| 79         | 88 |
| 78         | 89 |
| 77         | 90 |

|     |
|-----|
| 115 |
| 114 |
| 113 |
| 112 |
| 111 |
| 110 |
| 109 |

| PLOT No. | CENTS |
|----------|-------|
| 1        | 5.288 |
| 2        | 5.106 |
| 3        | 5.287 |
| 4        | 5.469 |
| 5        | 5.647 |
| 6        | 5.823 |
| 7        | 5.998 |
| 8        | 6.174 |
| 9        | 6.349 |
| 10       | 5.618 |
| 11 - 17  | 4.018 |
| 18       | 4.275 |
| 19       | 4.003 |
| 20 - 26  | 3.770 |
| 27       | 5.270 |
| 28       | 5.394 |
| 29 - 36  | 4.018 |
| 37 - 38  | 3.971 |
| 39 - 46  | 4.018 |
| 47       | 5.394 |
| 48       | 5.695 |
| 49 - 56  | 4.420 |
| 57       | 4.396 |
| 58       | 4.096 |
| 59 - 66  | 4.018 |
| 67       | 5.177 |
| 68       | 5.922 |
| 69 - 76  | 5.512 |
| 77       | 6.327 |
| 78 - 82  | 4.821 |
| 83 - 84  | 6.652 |
| 85 - 89  | 4.821 |
| 90       | 6.327 |
| 91 - 98  | 5.512 |
| 99       | 5.922 |
| 100      | 4.102 |
| 101      | 3.904 |
| 102      | 3.988 |
| 103      | 4.072 |
| 104      | 4.320 |
| 105      | 5.354 |
| 106      | 6.068 |
| 107      | 6.744 |
| 108      | 7.420 |
| 109      | 7.951 |
| 110      | 5.546 |
| 111      | 5.101 |
| 112      | 4.662 |
| 113      | 4.234 |
| 114      | 3.810 |
| 115      | 3.900 |

|   |     |
|---|-----|
| 9 | 108 |
| 8 | 107 |
| 7 | 106 |
| 6 | 105 |
| 5 | 104 |
| 4 | 103 |
| 3 | 102 |
| 2 | 101 |
| 1 | 100 |

----- APPROACH NORTH FACE ENTRANCE ROAD -----



**Jagathi 2**  
VILLAS  
For Better Living

**It is too good to be true.  
And it is.**

When you are in a new relationship, there is only one way to get to know each other better. Start with a clean slate. Afesh and onestep at a time. Make life better than what you may have know both were single. Anything worth doing is worth doing right. Jagati Villas it is ready for you.

**Exclusive  
DTCP  
Approved**

L.P. No. 49/2021/1173/DTCP/DPMS

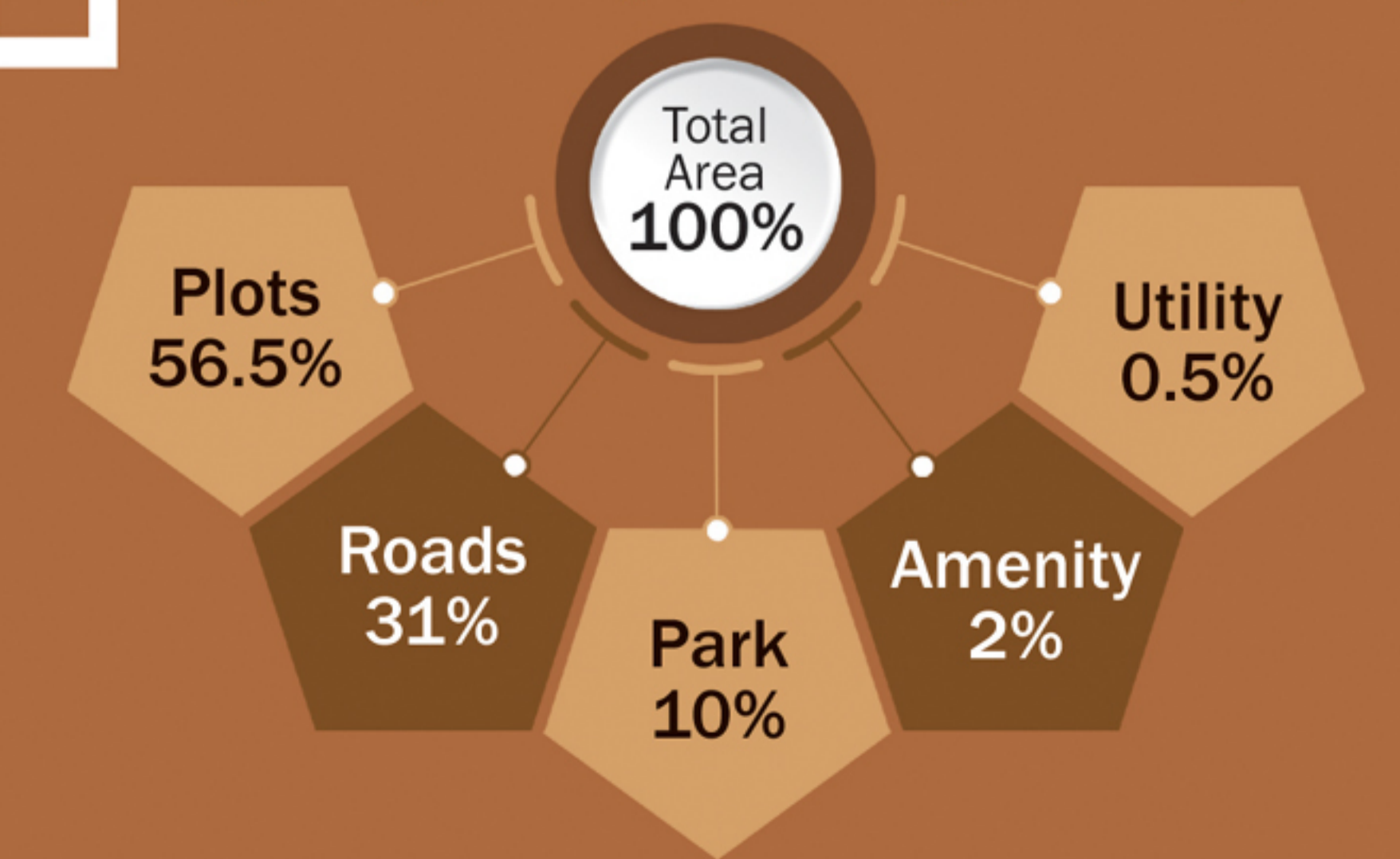


It's Right time to invest for  
**Bright Future ...**



**Jagathi 2**  
VILLAS  
For Better Living

PREMIUM LUXURY  
**RESIDENTIAL PLOTS & VILLAS**  
Approved by Annamayya Urban Development Authority



Houses will be constructed with the specifications as per owner's convenience with affordable cost ...



## STRUCTURE

RCC-Framed structure with 9 - inch thick red brick/ fly ash brick for external walls and 4 - inch for external walls. Internal and external cement plastering.

We are using branding materials

## DOOR

Main Door - Teakwood Frame, teak wood door & melamine polish with brass/ SS Fittings. Internal Doors : Teakwood Frames with moulded skin shutters/ WPVC doors.

## WINDOWS

UPVC sliding shutters with mosquito mesh track provision & designed MS painted grills.

## WATER SUPPLY

24 - hour water supply is ensured through borewell.

## FLOORING

Good quality vitrified tiles, flooring for Halls, Bedrooms, Dining, Kitchen, Anti-skid tiles in balcony and toilets.

## KITCHEN

Black Granite platform with stainless steel sink. Provision for Chimney, Water Purifier, Microwave Oven and Washing Machine in utility area.

## STAIRCASE & CORRIDORS

Granite flooring for staircase and corridors/ natural stone/ vitrified tiles.

Stainless steel railing for staircase and corridors.

## ELECTRICAL

Three-phase power supply for each flat. Concealed conduit with good quality copper wire. Good quality modular electrical switches of Legrand or equivalent. One Miniature Circuit Breaker (MCB) for each room, points for geysers in toilets, washing machine in utility, refrigerator in kitchen and dining, microwave oven in kitchen. Air-conditioner in all bedrooms, TV and Telephone point in living, master bedroom only.

## PAINTING

Internal : Two coats of luppam and two coats of acrylic emulsion paint over a coat of cement primer of reputed make.

External : Asian painting with wall care putty in elevation portions and other with external emulsions.

Common Areas : Two coats of water proof cement paint over a base coat of primer.

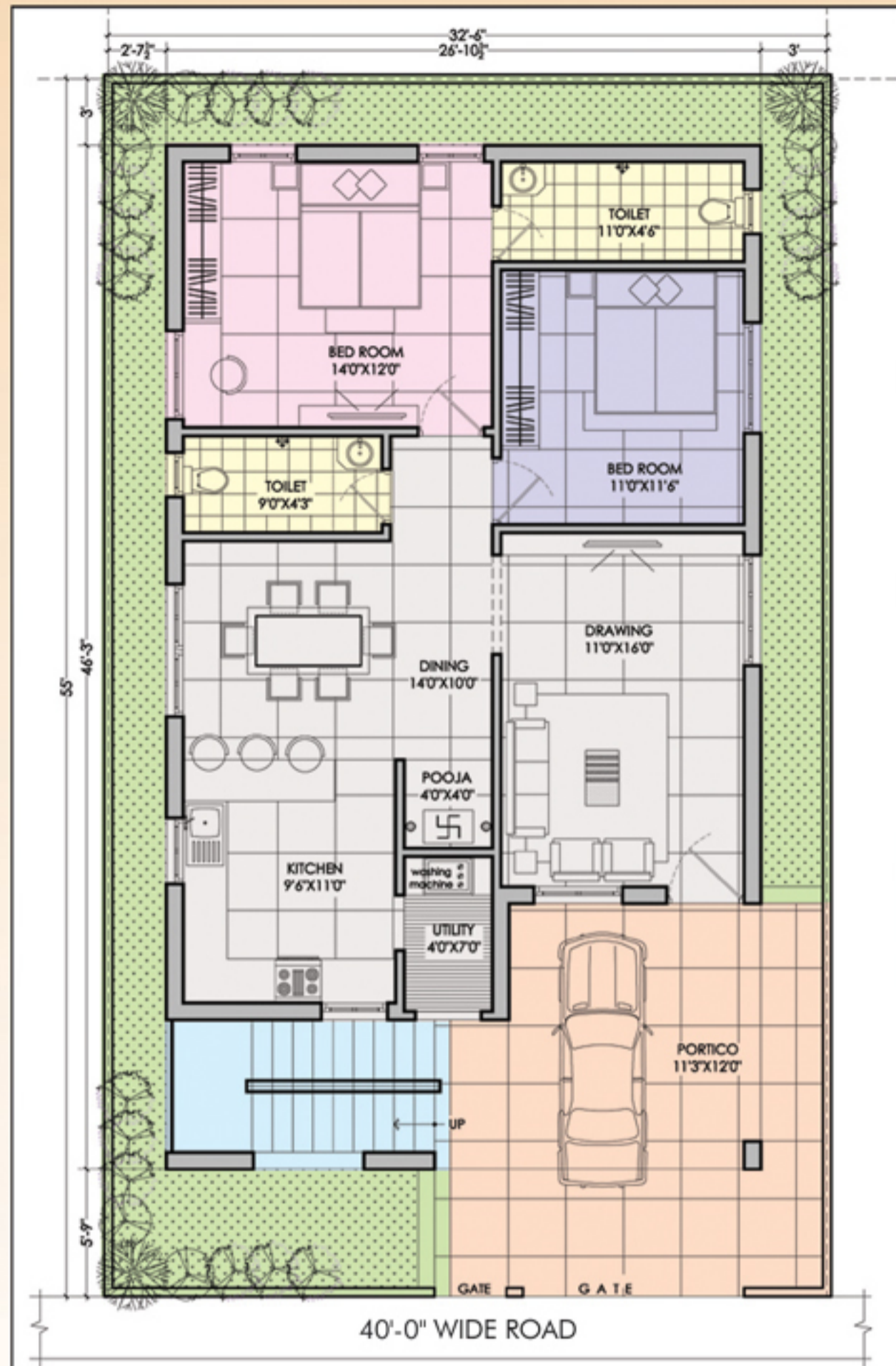
## BATHROOM

All toilets will consist of

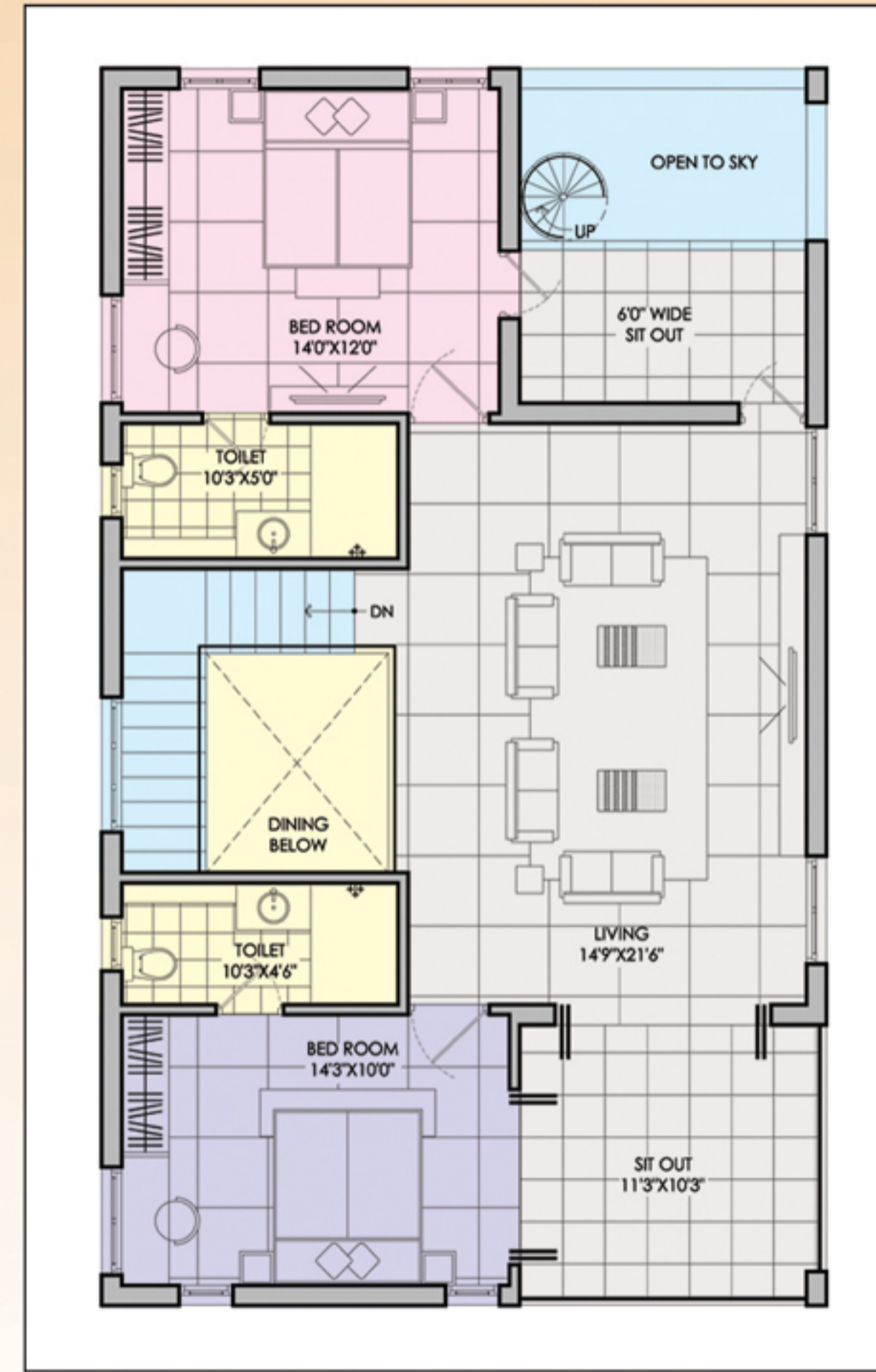
- One piece of EWC washbasin of Cera/ Hindware of equivalent make.
- Hot and cold wall mixture with overhead showers.
- Provision for geysers in all toilets.
- CP fittings with reputed make.



Ground Floor Plan

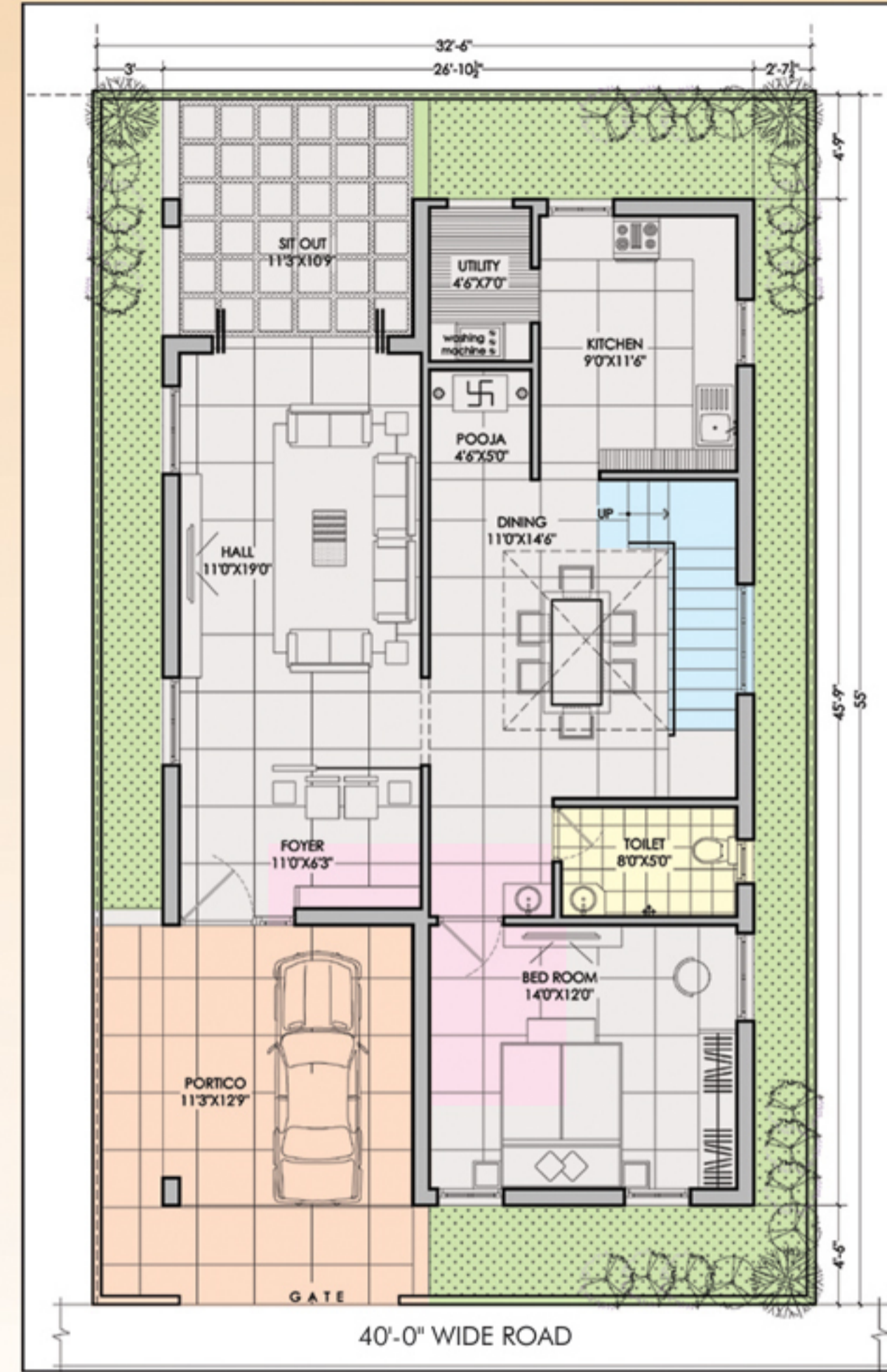


First Floor Plan

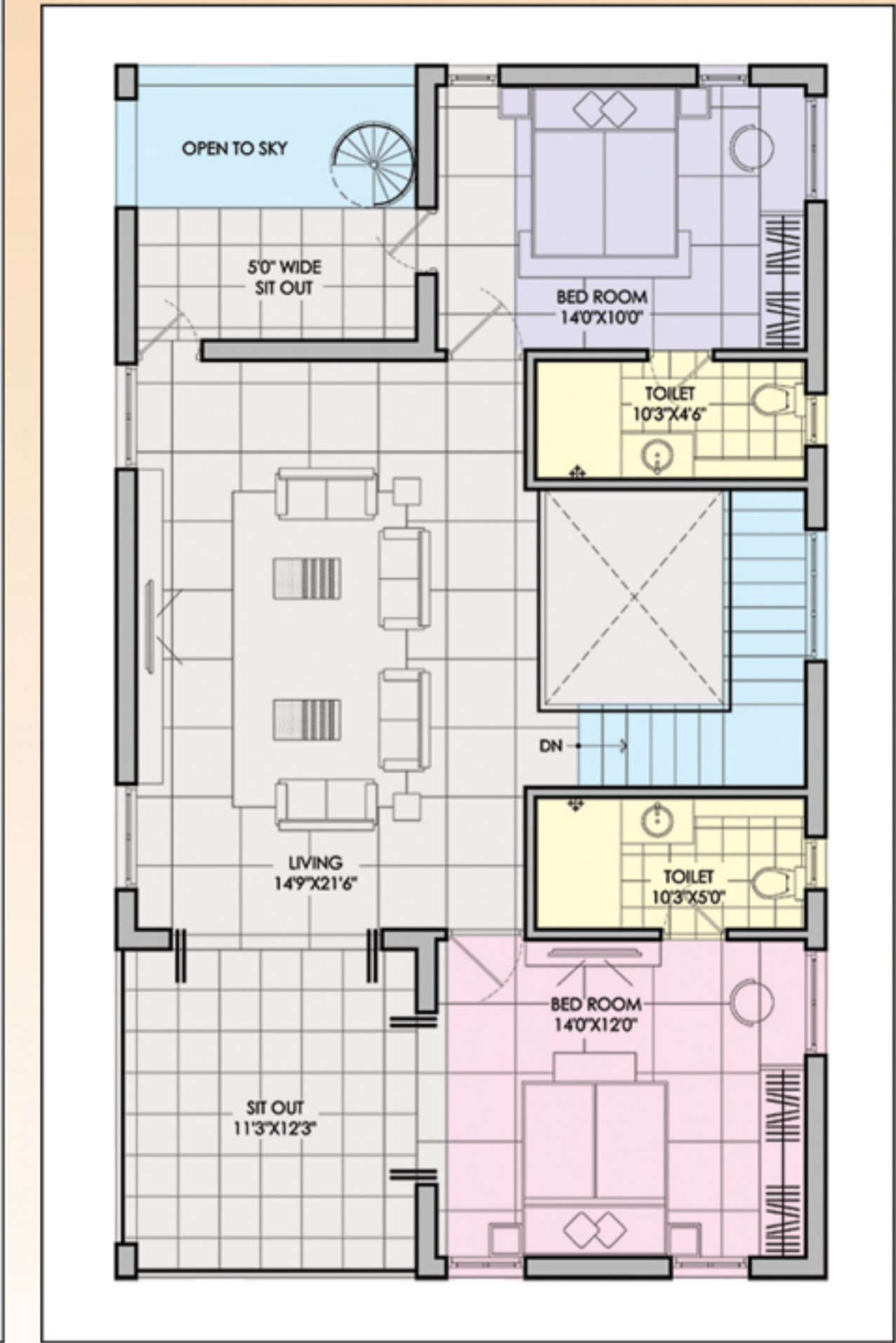


EAST FACING

Ground Floor Plan



First Floor Plan



WEST FACING

**Jagathi<sup>2</sup>**  
VILLAS  
For Better Living

Walk-in with just your bags and step into a

**NEW LIFE**

We build a Furnished Villas and Duplex Houses with Affordable Prices





With the Blessings of  
Late Levaku Narapu Reddy Garu

An  
experience  
that's ready to  
*mesmerize*  
you.

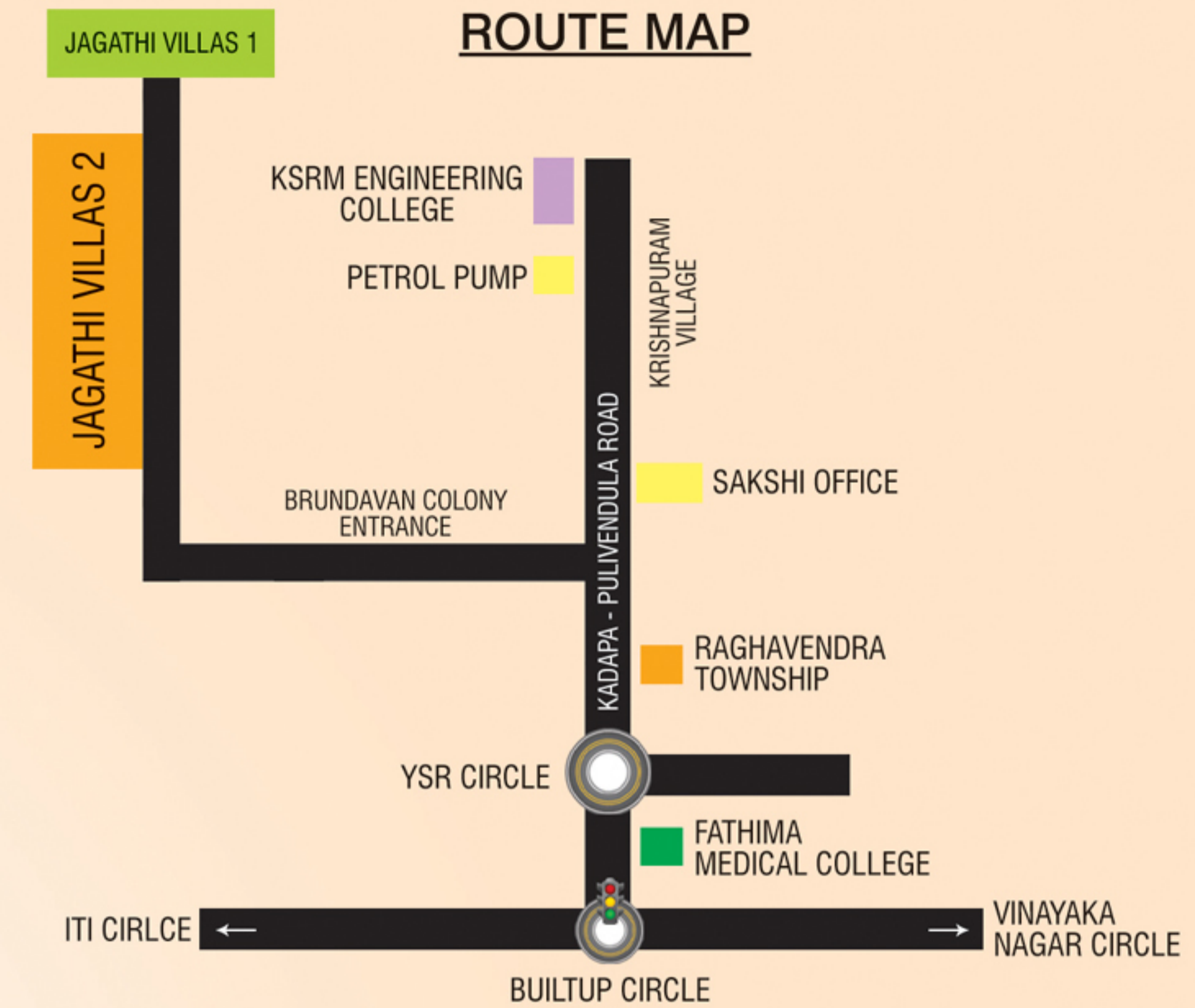
# Jagathi<sup>TM</sup> VILLAS<sup>2</sup>

For Better Living

Opp. Sakshi Press,  
Brundavan Colony Beside,  
**PABBAPURAM,**  
Kadapa City.

**Cell : 9581503555/ 7887263222**  
[www.jagathivillas2.com](http://www.jagathivillas2.com)  
e-mail : [jagathivillas2@gmail.com](mailto:jagathivillas2@gmail.com)

**FOR BOOKING CONTACT :**



## LOCATION HIGHLIGHTS

- 3 min. drive from KSRM Engineering College.
- 5 min. drive from Kopparthi Electronics Manufacturing Cluster.
- 5 min. drive from Jagan Anna Mega Industrial Park.
- 10 min. drive from Y.V.University.
- 5 min. drive from Built-up Circle.
- 7 min. Distance from Toll Plaza.
- 8 min. Distance from Kadapa Airport.
- 6 min. Distance from Kadapa Public School.
- 7 min. Distance from 3 Star Hotel, Opp.A.P.Tourism
- 6 min. Distance from Ircon Circle Ring Road and AP Tourism Hotel.
- 5 min. Distance from Vijayadurga Temple.
- 10 min. Distance from One Town Circle.
- 15 min. Distance from APSRTC Bustand.
- 20 min. Distance from Railway Station.
- 5 min. Distance from Fathima Medical College.
- 5 min. Distance from Balaji Institute of IT & Management.