

Installation and Setup Guide

GENERAL INFORMATION

The 5811 is a single zone Door/Window Transmitter, compatible with alarm systems that support 5800 series wireless devices. 5811 has a unique serial number permanently assigned during manufacture, which must be entered into the control panel upon installation.

NOTES

- Refer to the panel's installation instructions for programming details.
- During programming of the control unit, 5811 transmitters should be treated as "RF" (i.e. supervised RF) Type.

MOUNTING

Choose a mounting location for the 5811 where the device is stationary and the magnet is mounted to the moving part of the door or window. To verify adequate signal strength, conduct the Go/No Go test (see control's instructions) on the 5811 before mounting permanently.

1. **Install the Battery** by inserting one edge of the battery under one of the two plastic battery retainer clips, then pressing down firmly to snap it beneath both clips; see **figure 1**.
2. **Mount the 5811 using double-faced tape** (supplied) by affixing it to the back of the unit and mounting the unit in place. Use screws (optional) if desired; see **figure 2**. Mount the magnet (supplied) near the alignment marks on the case (see Diagram).

Replacing an existing unit: The back-mounting plate must be replaced when replacing the 5811. Use standard installation practices when removing the unit to avoid any damage to the mounting surface.

3. Engage the case tabs (see **figure 2**), then rotate the housing to close. Engage the latch with firm pressure to close and lock.

BATTERY REMOVAL

1. Open the housing by inserting a flat blade screwdriver into latch and twisting gently.
2. Remove the old battery cell using a small flat screwdriver into the latch and gently twisting it until the cover becomes removable (see figure 3).

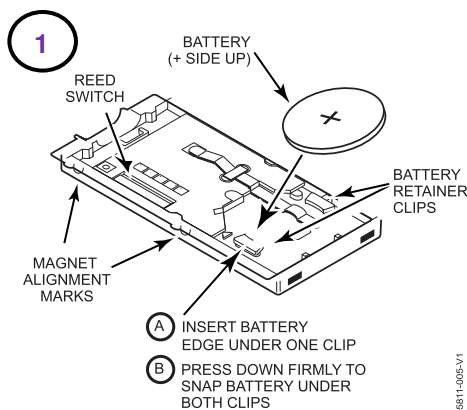


Figure 1. Battery Installation

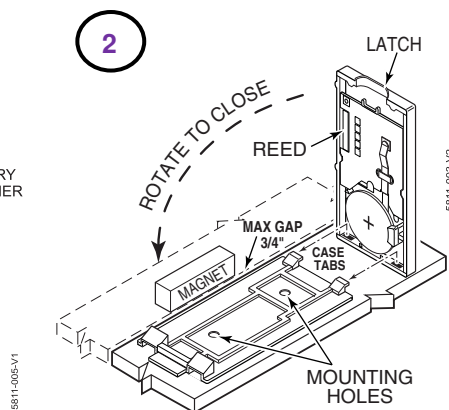


Figure 2. Mounting

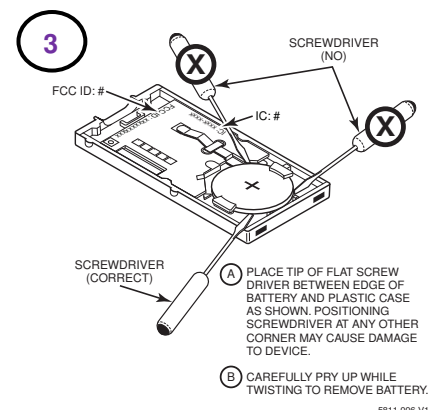


Figure 3. Battery Removal

SPECIFICATIONS

Dimensions:	2-1/8" (55mm) x 1-3/16" (30mm) x 1/4" (7mm)
Operating Conditions:	23° F (-5° C) to 120° F (50° C) Relative Humidity 95%, (non-condensing)
Replacement Battery:	Panasonic/Sener CR2032 and Duracell DL2032

NOTE: The FCC ID and IC Certification number is on the back of the plastic case, or see the diagram in the “*Figure 3: Battery Removal*” section for the alternate location.

FEDERAL COMMUNICATIONS COMMISSION (FCC) & ISED

The user shall not make any changes or modifications to the equipment unless authorized by the Installation Instructions or User's Manual. Unauthorized changes or modifications could void the user's authority to operate the equipment.

FCC / ISED STATEMENT

This device complies with Part 15 of the FCC Rules, and ISED's license-exempt RSSs. Operation is subject to the following two conditions: (1) This device may not cause harmful interference, and (2) This device must accept any interference received, including interference that may cause undesired operation.

Cet appareil est conforme à la partie 15 des règles de la FCC et exempt de licence RSS d'ISED. Son fonctionnement est soumis aux conditions suivantes: (1) Cet appareil ne doit pas causer d'interférences nuisibles. (2) Cet appareil doit accepter toute interférence reçue y compris les interférences causant une réception indésirable.

Responsible Party / Issuer of Supplier's Declaration of Conformity: Ademco Inc., a subsidiary of Resideo Technologies, Inc., 2 Corporate Center Drive., Melville, NY 11747, Ph: 516-577-2000

TO THE INSTALLER: Regular maintenance and inspection (at least annually) by the installer and frequent testing by the user are vital to continuous satisfactory operation of any alarm system. The installer should assume the responsibility of developing and offering a regular maintenance program to the user, as well as acquainting the user with the proper operation and limitations of the alarm system and its component parts. Recommendations must be included for a specific program of frequent testing (at least weekly) to insure the system's operation at all times.

REFER TO THE INSTALLATION INSTRUCTIONS FOR THE CONTROL WITH WHICH THIS DEVICE IS USED, FOR DETAILS REGARDING LIMITATIONS OF THE ENTIRE ALARM SYSTEM.

The product should not be disposed of with other household waste. Check for the nearest authorized collection centers or authorized recyclers. The correct disposal of end-of-life equipment will help prevent potential negative consequences for the environment and human health.

Any attempt to reverse-engineer this device by decoding proprietary protocols, de-compiling firmware, or any similar actions is strictly prohibited.

SUPPORT & WARRANTY INFORMATION

For the latest documentation, online support and, patent information, please go to:
www.resideo.com

For the latest warranty information, please go to:
www.security.honeywellhome.com/warranty

The Honeywell Home Trademark is used under license from Honeywell International Inc.
This product manufactured by Resideo Technologies and its affiliates

resideo

**2 Corporate Center Drive, Suite 100
P.O. Box 9040, Melville, NY 11747
© 2020 Resideo Technologies, Inc.
www.resideo.com**



800-03928V2D 4/15 Rev. D