



EQUITY THROUGH ACTION



INFO GUIDE

2023



ABOUT US:

Equity Through Action (ETA) is a full-service Black, LGBTQIA+, woman-owned consulting firm at the intersection of framing, culture, and innovation, with over 50 collective years of experience identifying, curating, and supporting organizations committed to dismantling inequities. ***ETA values humanity, inclusion, growth, and action.***

We provide training, coaching, and technical assistance, creating equitable practices, inclusive policies, and mind shifts. Our training fees match our expertise, align with industry standards, and range from \$5000 to \$18,000 per session based on participants and training length. We offer customized services designed to meet your needs and budget. ***Our mission is to aid you in creating a safe, just, and inclusive anti-racist organization.***

We bring a deep commitment to **justice, equity, diversity, and inclusion (JEDI)** framing; we deliver measurable results, creating more inclusive organizations that generate innovation, reduce staff turnover, and increase productivity. ***Our efforts transform your workplace and ensure you have the strategies to support change.***



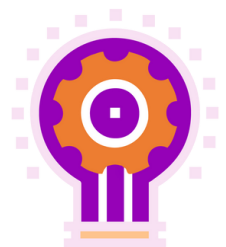
AREAS OF FOCUS:

- Active Coaching & Resource Development
- Creation and/or re-engagement of JEDI Councils/Committees/Employee Resource Groups
- Organizational Audits, Competency Surveys, or Coaching
- Pay Equity Analysis
- Staff Pulse Surveys
- Staff Retreats/Advances
- Strategic Planning
- Training & Working Sessions
- Technical Assistance



TOP-SELLING COURSES:

- Addressing Equity & Conflict
- Allyship in Action
- Applying an Equity Lens to Decision Making
- Conscious Conversations
- Defining Workplace Culture
- Diversity, Equity & Inclusion in the Workplace: How to Make it Stick
- Exploring Inclusive Language: Supporting Identities in the Workplace
- Inclusive Leadership
- Intent vs. Impact
- Interrupting Bias in the Workplace





TOP-SELLING COURSES:

- JEDI Foundations
- Power in the Workplace
- Race Equity & Emotional Intelligence
- The Roots of Racism

SAMPLE CLIENT PROGRAMS & PACKAGES:

Inclusive Leadership Series

- Inclusive Leadership Parts I, II, & III
- Conscious Conversations
- Allyship in Leadership & In Action

Defining JEDI Workplace Culture

- Workplace Culture Parts I, II, & III
- Conscious Conversations
- Creating new JEDI-focused Cultural Norms



PROGRAMS & PACKAGES CONTD:

JEDI Foundations

- The Roots of Race & Racism
- JEDI Foundations Parts I, II, & III
- Conscious Conversations
- Inclusive Leadership Parts I, II, & III
- Allyship in Leadership & In Action

JEDI Focused Staff/Retreats/Advances

- Race Equity & Emotional Intelligence
- Inclusive Leadership Parts I, II, & III
- Allyship in Leadership
- Allyship in Action

READY TO MOVE TO ACTION?  [click here](#)

If you're prepared to create an inclusive workplace where innovation meets a thriving culture, call us to create a JEDI program for your organization.



equitythroughaction.com