



\* Shown with optional Conversion Kit

Info on back **302707**



### PRO 170

Dims / 17' L x 7.5' W (202" x 90")  
Deck Height / 12"  
Weight / 565 lbs.  
Weight capacity / 2,600 lbs.



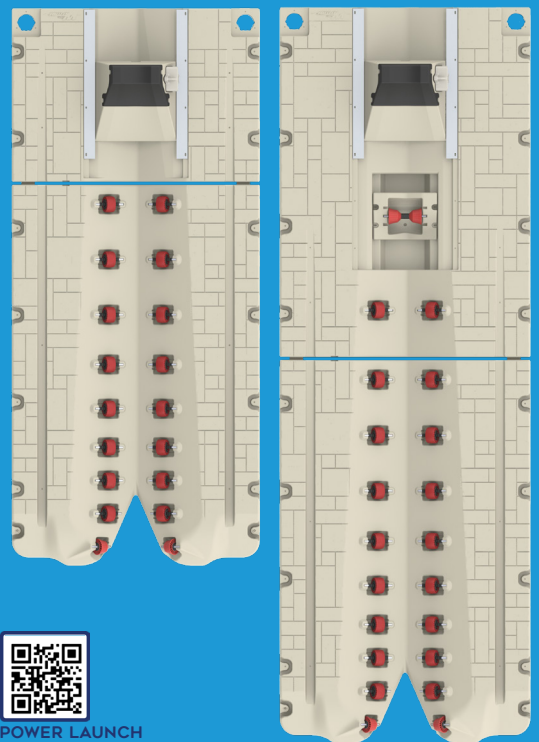
### PRO 220

Dims / 22' L x 7.5' W (202" x 90")  
Deck Height / 12"  
Weight / 720 lbs.  
Weight capacity / 3,400 lbs.

All new Pro Port designed for aluminum or fiberglass boats up to 20 feet in length.

**SeaDoo Switch® Compatibility:** Our optional conversion kit is tailor-made for docking the SeaDoo Switch®. The blue plates cradle the outside toons of the Switch®, ensuring a perfect alignment on the port and keeping your valuable craft entirely out of the water. (#302707) [Sold separately]

- Wider entrance body to align your boat and glide onto the port smoothly.
- Adjustable bow stop and wheels to accommodate various boat sizes.
- Pro 220 comes equipped with a keel rest roller that prevents keel dragging.
- Boosters available to accommodate heavier boats and weight distribution due to heavy motors.
- Increase width and walkaround room with optional Pro Side Extension (#302514) - sold separately.
- Easy drive-on / push-off or use our new patent-pending Power Launch System. (#302673) Just a push of a button and the power launch system effortlessly pushes your boat into the water softly and safely. (Sold separately)
- Protect your watercraft from the elements with our new patent-pending ProTect'R Canopy System! (#302700) works on the Pro 220. (Sold separately)

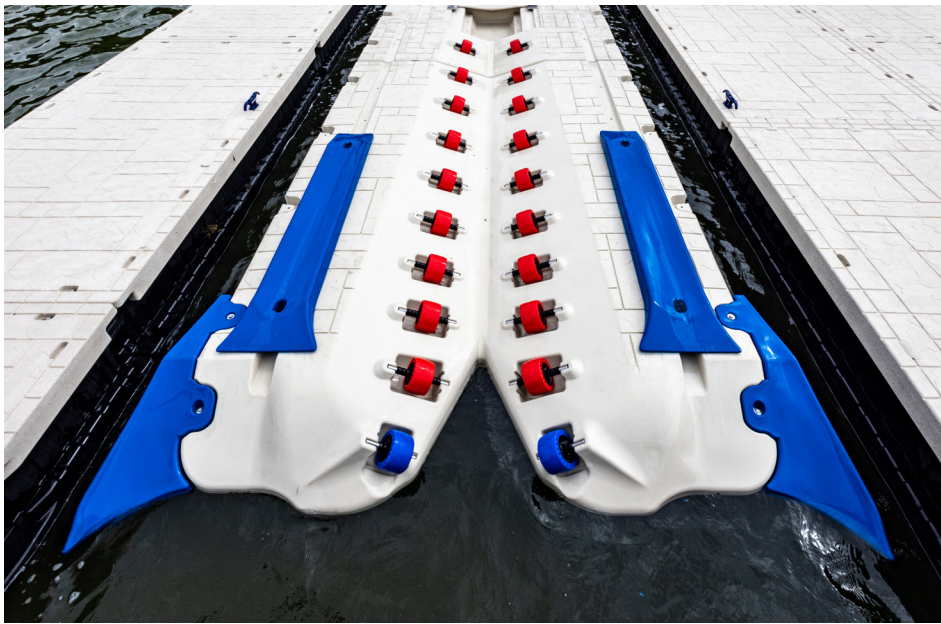


POWER LAUNCH



PROTECT'R CANOPY





## PRO 170/220 CONVERSION KIT

**302707** **NEW!**

Add-on assembly to accommodate a SeaDoo Switch® on the Pro 170 / 220 boat port.



## PRO INLINE SIDE WING **NEW!**

**302498**

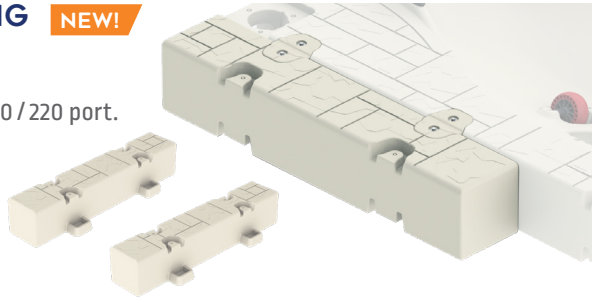
Add walking room to side of Pro 170 / 220 port.

Dims: 63" L x 12" W

Weight: 140 lbs.

Weight capacity: 150 lbs each

- Includes 2



## PRO CLEAT **NEW!**

**302711**

Installs in mounting pockets along perimeter of Pro 8, Extreme, Pontoon and Pro 220/170 ports.

- Includes 2 + hardware

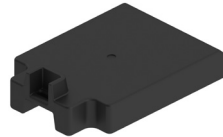


## PRO 170/220 BUOYANCY BOOSTER **NEW!**

**302725**

This buoyancy booster provides an extra 160 lbs of floatation per booster. The booster can be installed along the perimeter of the port in multiple molded-in underside pockets, even after full port installation is completed. No tools or hardware needed for the installation.

- 24" x 36", Includes 2



## PRO CAP FILLER

**302414** QTY 4  
**302415** QTY 24

Covers unused mounting pockets. Fits:

Pro 220 **302600**

Pro 170 **302666**

Pontoon Port **302163**

Pro 8 Boat Port **301937**

Pro Side Extension **302514**

Extreme X24 **301980**

Pro 5 **302098**

Pro 6 **302096**

Pro Maxx 5 **302390**

Pro Maxx 6 **302392**

Pro Inline **302499**

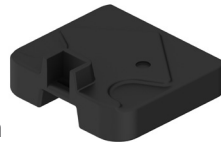


## PRO PWC BUOYANCY BOOSTER **NEW!**

**302685**

This buoyancy booster provides an extra 85 lbs of floatation per booster. The booster can be installed along the perimeter of the port in multiple molded-in underside pockets, even after full port installation is completed. No tools or hardware needed for the installation.

- 24" x 24", Includes 2



## PRO PORT TO WAVE DOCK

**302196**

- Qty 2
- Hardware included

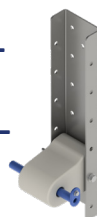


## PRO PORT TO FLOATING DOCK KIT

**302197**  
**19.75" C-CHANNEL**

**302198**  
**25.75" C-CHANNEL**

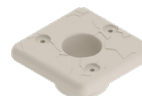
- Qty 2
- Hardware included



## PRO PORT PIPE SLEEVE

**302128** 2"  
**302152** 3"

- Bolt-on design
- Qty 2
- Hardware included



## PRO SIDE POST ATTACHMENT KIT **NEW!**

**302649** 2"  
**302650** 3"

- 12" H
- Qty 2
- Hardware included

