



### PRO 8

302513

Dims / 20' L x 8' W (240" x 96")

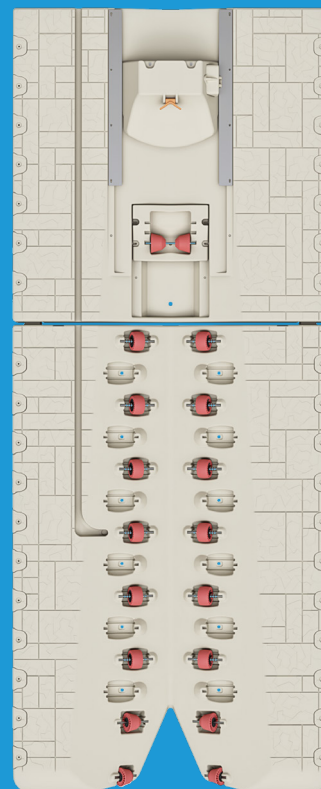
Deck Height / 15"

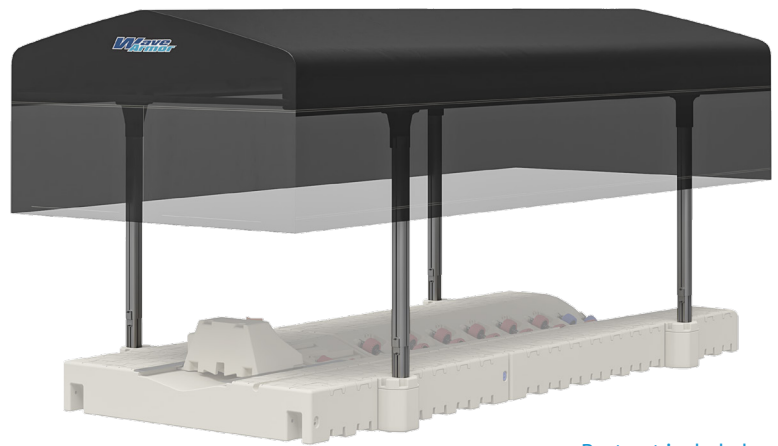
Weight / 850 lbs.

Wt. capacity / 4,200 lbs.

The Pro 8 Boat Port is engineered for maximum customization and supports boats up to 4,200 lbs.

- Expand width by 10" on each side for more walk-around room and increased capacity with Side Extension Deck. (Sold separately #302514)
- Ideal for jet boats and watercraft with smaller engines.
- Varied wheel density ensures a soft port entrance for added protection.
- Center front roller adjusts up/down in 3" pockets to raise or lower the bow as needed.
- Side mounting pockets fit additional Wave Armor accessories for enhanced functionality.
- Big centering V-shape entrance facilitates easy entrance to the port.
- Easy drive-on / push-off or use our new patent-pending Power Launch Assist. (#302673) Just a push of a button and the power launch assist effortlessly pushes your boat into the water softly and safely. (Sold separately)
- Protect your watercraft from the elements with our new patent-pending ProTect'R Canopy System! (#302699) (Sold separately)





Port not included

## PRO 8 PROTECT'R CANOPY 9' x 22'

Dims: 9' W x 22' L

Structure with post brackets (no canvas) 302735

24" Drape Canvas 302696

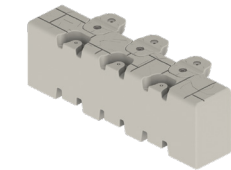
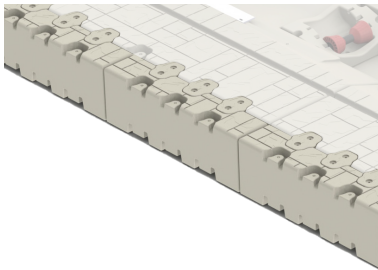
48" Drape Canvas 303002



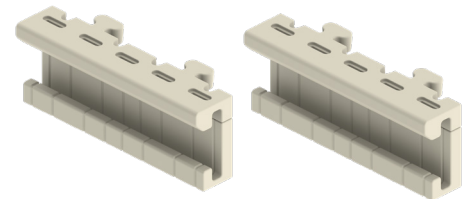
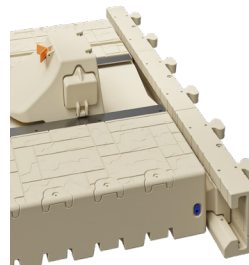
**POWER LAUNCH  
ASSIST**  
302673



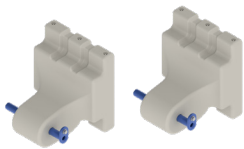
**PRO BOW STOP  
STEP**  
302814



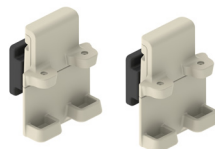
**PRO SIDE EXTENSION**  
302514



**PORT CONNECT LINK** 302823



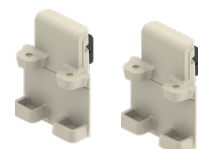
**PRO PORT FRONT MOUNT  
TO WAVE DOCK**  
302196



**SIDE MOUNT SLIDE ASSY  
TO WAVE DOCK**  
302603



**PRO PORT TO  
FLOATING DOCK**  
302197 19.75" C-CHANNEL  
302198 25.75" C-CHANNEL



**SIDE MOUNT SLIDE ASSY  
TO FLOATING DOCK**  
302792



**PRO PORT FRONT  
PIPE MOUNT**  
302411 2"  
302412 3"  
302798 4"



**PRO PORT SIDE PIPE  
ANCHORING KIT**  
302345 2"  
302346 3"  
302347 4"



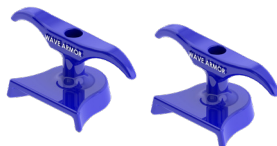
**16-24" TELESCOPING PORT  
TO FIXED DOCK KIT**  
301434 FOR 2" PIPE  
301435 FOR 4" PIPE



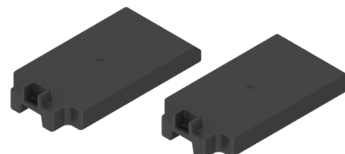
**RAISED PIPE MOUNT TO  
FIXED DOCK KIT**  
302081 FOR 2-3" PIPE  
302082 FOR 4" PIPE  
EXTRA SUPPORT AVAILABLE



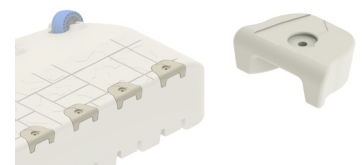
**PRO 8 & PONTOON PORT  
PYLON HOOPS**  
302815 8"  
302816 10"  
302817 12"



**PRO CLEAT**  
302711

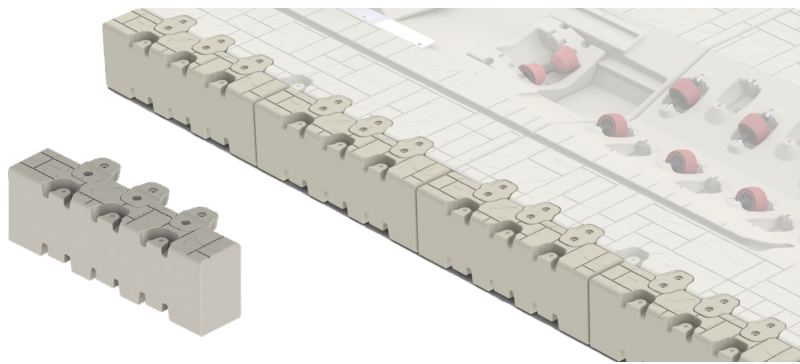


**BUOYANCY BOOSTERS**  
302159



**PRO HALF CAP**  
302414 QTY 4  
302415 QTY 24





## PRO SIDE EXTENSION 302514

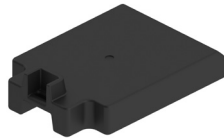
Designed to increase the width of the port by 10" for more walk around room.

- 47.75" L x 14.6" W x 15" H
- Includes 1
- Increases width of port by 10"
- Weight: 20 lbs.
- Weight capacity: 140 lbs.

## PRO 170/220 BUOYANCY BOOSTER 302725 **NEW!**

This buoyancy booster provides an extra 160 lbs of floatation per booster. The booster can be installed along the perimeter of the port in multiple molded-in underside pockets, even after full port installation is completed. No tools or hardware needed for the installation.

- 24" x 36", Includes 2



## PRO CLEAT **NEW!** 302711

Installs in mounting pockets along perimeter of the port.

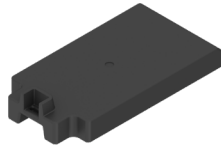
- Includes 2 + hardware



## BUOYANCY BOOSTERS 302159

This buoyancy booster provides an extra 200 lbs. of floatation per booster for a total of 400 lbs. Can be installed along the perimeter of the port in multiple molded-in underside pockets, even after full port installation is completed. No tools or hardware needed.

- 24" x 48", Includes 2



## PRO CAP FILLER 302414 QTY 4 302415 QTY 24

Covers unused mounting pockets.



## 16-24" TELESCOPING PORT TO FIXED DOCK KIT



### 301434 FOR 2" PIPE 301435 FOR 4" PIPE

- Includes 2 brackets, 2 U-bolts and hardware
- Requires 2" or 4" pipe sleeves (not included)

## RAISED PIPE MOUNT TO FIXED DOCK KIT

### 302081 FOR 2-3" PIPE

### 302082 FOR 4" PIPE

### 302039 EXTRA SUPPORT FOR 2-3" PIPE

### 302515 EXTRA SUPPORT FOR 4" PIPE

- Includes 2 + hardware



## PRO PORT SIDE CONNECTION SLIDE ASSY 302603



Connects from mounting pockets on side of port to H-Beam channel on Wave Dock.

- Qty 2
- Hardware included



## PRO PORT FRONT PIPE MOUNT 302411 2" 302412 3" 302768 4"

Designed to be used when the slip width is limited or when a parallel installation to an existing dock is required.

- Includes 2 + hardware
- Can be used in combination with other brackets

## PRO PORT TO WAVE DOCK

### 302196

- Qty 2
- Hardware included



## PRO PORT TO FLOATING DOCK KIT

### 302197 19.75" C-CHANNEL

### 302198 25.75" C-CHANNEL

- Qty 2
- Hardware included



## PRO PORT PIPE SLEEVE

### 302128 2" 302152 3"

- Bolt-on design
- Qty 2
- Hardware included



## PRO PORT PIPE ANCHORING KIT

### 302345 2" 302346 3" 302347 4"

- Qty 2
- Hardware included

