

# Wave Armor / PRO INLINE



## PRO INLINE

302499

Dims / 27' L x 4.8' W (324" x 58" W)

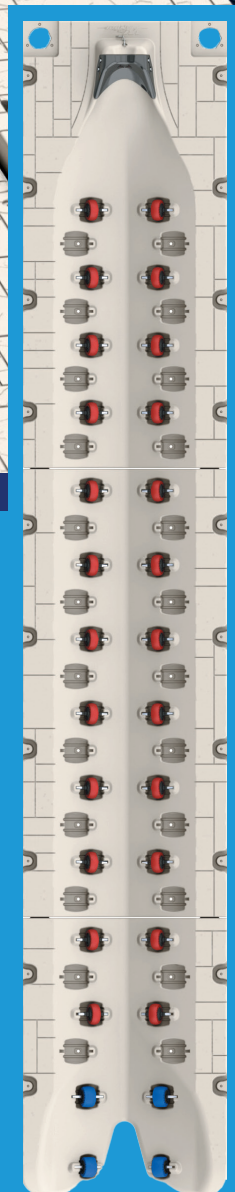
Deck Height / 12"

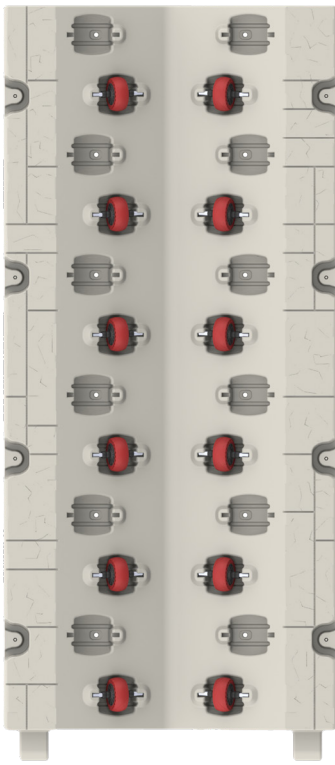
Weight / 560 lbs.

Weight capacity / 2,400 lbs.

The Pro Inline Port is the perfect solution for a family with multiple PWCs or for rental / commercial operations.

- Optional mid-section add-on for an expandable design to increase overall length as needed for up to 12 PWCs.
- 5' width enables side-by-side installation for standard 10' slip.
- Accommodates most PWCs in the market and has a deeper midsection design effortlessly accommodates PWCs with deeper hulls.
- Strategically positioned, super soft bumper-like wheels to allow a soft, smooth, worry free loading experience. Wheel pockets designed for perfect alignment and optimal hull protection every time.
- Pro line of connectors and attachments for seamless integration with your waterfront setup.
- Molded-in bow stop, paired with a robust stainless steel clip and chain, guarantees secure positioning.
- Crafted with an incredibly durable rotomolded shell, fully filled with marine-grade EPS foam, offering maintenance-free high-density polyethylene construction.





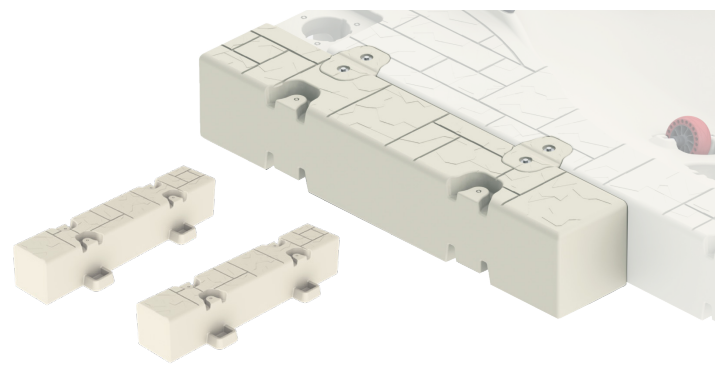
## PRO INLINE PORT MIDSECTION

### 302386 MSRP \$1,999

Expandable by design, the additional Inline mid-sections can easily be added to the Inline Port to increase the overall length as needed for additional PWC. Manufactured with all the same features and benefits of the Pro Series ports.

Dims: 58" W x 126" L x 12" H  
Weight: 220 lbs.  
Weight capacity: 1200 lbs.

- Can be expanded from 2 to 6 PWC's or more
- Utilizes all Pro Port mounts



## PRO INLINE SIDE WING NEW!

### 302498

Add walking room to side of Inline port.

Dims: 63" L x 12" W  
Weight: 140 lbs.  
Weight capacity: 150 lbs each

- Includes 2

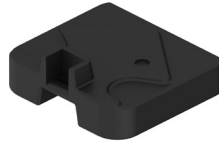


## PRO PORT TO PORT CONNECTION KIT

### 302102 MSRP \$250

Connects two or more PRO ports.

- Includes 2



## PRO PWC BUOYANCY BOOSTER

### 302685 NEW!

This buoyancy booster provides an extra 85 lbs of floatation per booster. The booster can be installed along the perimeter of the port in multiple molded-in underside pockets, even after full port installation is completed. No tools or hardware needed for the installation.

- 24" x 24", Includes 2

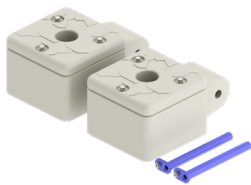


## PRO CAP FILLER

### 302414 QTY 4 302415 QTY 24

Covers unused mounting pockets. Fits:

- Pro 220 [302600](#)
- Pro 170 [302666](#)
- Pontoon Port [302163](#)
- Pro 8 Boat Port [301937](#)
- Pro Side Extension [302514](#)
- Extreme X24 [301980](#)
- Pro 5 [302098](#)
- Pro 6 [302096](#)
- Pro Maxx 5 [302390](#)
- Pro Maxx 6 [302392](#)
- Pro Inline [302499](#)



## PRO PORT FRONT PIPE MOUNT

### 302411 2" MSRP \$195 302412 3" MSRP \$195 302768 4" MSRP \$195

- Hardware included
- Can be used in combination with other brackets

## PRO PORT TO WAVE DOCK

### 302196

- Qty 2
- Hardware included



## PRO PORT TO FLOATING DOCK KIT

### 302197 19.75" C-CHANNEL 302198 25.75" C-CHANNEL

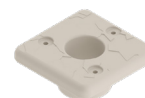
- Qty 2
- Hardware included



## PRO PORT PIPE SLEEVE

### 302128 2" 302152 3"

- Bolt-on design
- Qty 2
- Hardware included



## PRO SIDE POST ATTACHMENT KIT NEW!

### 302649 2" 302650 3"

- 12" H
- Qty 2
- Hardware included

