

November 2017

Issue 11



www.stokehammondpc.com

S
H
R
E
W
S

St LUKE'S, STOKE HAMMOND

November 5 th	11.00	United Family Service at Methodist Church
November 12 th	10.45	Remembrance Service at Methodist Church
November 19 th	09.00	Holy Communion – Revd John Waller
November 26 th	09.00	Morning Worship – <i>Leader to be confirmed</i>

*PLEASE ALSO NOTE THE FOLLOWING DATES FOR COMMUNITY BREAKFASTS
AT THE COMMUNITY CENTRE, BRAGENHAM SIDE*

Saturday 11 th November	8.30 - 10.30 (Last Orders)
Saturday 9 th December	8.30 - 10.30 (Last Orders)

Church Wardens:

Diane Webber 270409 and Harry Davies 01234-822780

METHODIST SERVICES

Revd Donna Broadbent-Kelly - 01525 240589

November 5 th	11.00	United Service – Mr Ken Harris
November 12 th	10.45	Remembrance Service – Revd Donna Broadbent-Kelly
November 19 th	11.00	Service – Mr Richard Maguire
November 26 th	11.00	Service at Stewkley Methodist Church

Coffee Mornings

Wednesdays at 10.30 - 11.30
(contact 01525-270287)

Date for your Diary

Christmas Bazaar – Saturday 18th November - 14.30

PARISH COUNCIL NEWS

Well the worst kept secret or some might say rumour is now official, they plan to demolish The Dolphin and replace it with 6 one-bedroom flats and 3 three-bedroom homes. The application 17/03772/APP Demolition of existing public house and the erection of 9 dwellings, will be discussed at the November Parish Council meeting, but full details can be viewed online at the AVDC planning portal.

www.aylesburyvaldc.gov.uk/search-planning-licensing-applications

So, to last month's Parish Council meeting held on the 3rd October attended by six members of the public, with apologies for absence received from Cllrs Geoff Lane, Hazel Turner, Janet Blake (BCC) and Neil Blake (AVDC). There were only a few minor matters raised during the public participation session, but the PC was again asked about the enlarged driveway to the property known as Mallaig on Church Lane, and as to whether any action had been taken? The PC clerk confirmed that this had indeed been previously reported to BCC.

Having agreed the payment run and approved the PC accounts until the end of August 2017 the meeting moved on to planning matters. There was only a single application to be considered 17/03441/APP for the construction of a driveway to 25 Fenny Road, to which the PC had no objection. However, other planning related matters were raised by some of the attending parishioners, namely Ayresome on Old School Lane and the issue of contractor parking for the Lodge Lane Development. Returning to the former, the application 17/03093/APP for the extension and raising of the roofline to the existing garage was discussed last month, to which your Council objected on the grounds that it appears to be an additional dwelling rather than a simple extension. But now the question was raised about the gradient of the drive at this property and whether permission had ever been granted to make the crossover into the highway. The PC agreed to add the following notation to their previously submitted comments 'The applicant does not have Highways Authority to make the crossover into the Highway, nor has planning permission been granted and the PC has concerns about the gradient of the road. There is inadequate vision splay. Please check these issues before determination'. For the latter contractor parking issues, it is a condition of the planning permission that all contractor vehicles must park on site, but several vans whose owners were working on the Lodge Lane site were leaving their vehicles parked outside the shop, causing grief for Kutte the shop owner and for those trying to visit the shop. The Chair advised he had met with both developer's marketing manager and site foreman asking them to address this issue. Finally, as regards planning, the PC was pleased to report that its recent application 17/03266/APP for change of use from agricultural to recreational for the land it's purchasing that adjoins the Community Centre, was approved by AVDC.

The meeting then moved on to Highways/Land and the matter of the dwindling white lines to the pedestrian crossing was again raised. This has previously been reported to Bucks Highways as indeed has the poor state of the footpath that runs between the crossing along to Tyrells Manor. Both have works reference numbers allocated to them, and your PC will try and progress, but with their restricted budgets and an unfathomable prioritisation system, it's extremely hard to obtain any dates/timeframe from BCC for when they will get around to these repairs. The same applies to the broken street name sign on Old School Lane, reported many months ago to AVDC – again we will chase.

In last month's report we advised as to how the long awaited Vale of Aylesbury Local Plan
(continued overleaf)

(VALP) was edging ever closer to fruition. It's now in its final draft form, and as such representatives from all of the Vale of Aylesbury parishes were invited to attend a briefing meeting to be held at the AVDC Oculus building on the 4th October. Cllrs Donna Page and Greg Noble went along to this meeting to hear what AVDC had to say.

One of the more interesting points was that AVDC have to submit this plan to the Government examiner by March 2018, otherwise the whole plan will have to be revisited to accommodate the Governments recent 55% uplift in anticipated housing requirements, albeit, even if submitted before the deadline date and approved, AVDC would still then have to revisit and review in light of this increased housing stock requirement. So, what are the actual housing numbers covered by this plan, which most interestingly has to accommodate the unmet need of two neighbouring authorities, namely 5,750 for Chiltern/South Bucks and 2,250 for Wycombe.

*28,830 new homes to be delivered during plan period which includes a 5.2% buffer on top of the figure of 27,400 (AVDC housing needs plus unmet need)

*Over half already committed (14,871)

*Around 13,000 new homes allocated in the Plan

*7,810 to be allocated at Aylesbury Garden Town

*2,750 allocated at other strategic settlements including 1,000 at RAF Halton

*1,885 allocated at Salden Chase

*308 allocated in larger villages

*274 in medium villages

*Windfall accounts for 962 homes

With Stoke Hammond denoted as a 'Medium' village, it would seem as if we're taking the lion's share of these 274 figures!!

For more information, visit www.aylesburyvaldc.gov.uk/localplan

There has been some who have questioned why the village has no Neighbourhood Plan (NP) in place which would protect us from this overdevelopment of our village. But in reality, it has been proved that these NP's which require an enormous amount of time, effort and cost to produce, are to some extent being totally ignored by the planners. From all the people who should know or from meetings we have attended, it is being said to us that until such time as the VALP is adopted and can thus be referred to within a NP, very little weight is given to a NP when considering planning applications. This was more or less confirmed by Sue Kitchen AVDC's Corporate Planner when questioned about same at the aforementioned briefing meeting.

Just a reminder that the next PC meeting is to be held at 7.30pm Tuesday 7th November in the small meeting room at the Community Centre, Bragenham Side. All are welcome.

Sue Severn, 19 Curlew, Watermead, Bucks. HP19 0WG T: 01296 336575 M: 07778 473392
clerk.stokehammondpc@gmail.com www.stokehammondpc.com

You can still order your colour prints of the Ordnance Survey Map dating from 1881. You can really see how our village has changed! Please place your orders with our clerk Sue Severn. Priced at £13.30 for an A3 size and £15.50 for an A2, the prints are full colour finished on 180g/m matt coated paper.

Golf membership for £699

Full 7 day membership until March 2017 at The Three Locks Golf Club - Call for details



Terms and conditions apply. Membership runs until 31st March 2017.

Parties and Events at The Three Locks Golf Club



**FREE hire for
Wakes and
Christenings**

The bistro & venue at The Three Locks Golf Club is the first choice for your events and celebrations.

Perfect for special family events such as Christenings, birthdays, wedding receptions, anniversaries and wakes.

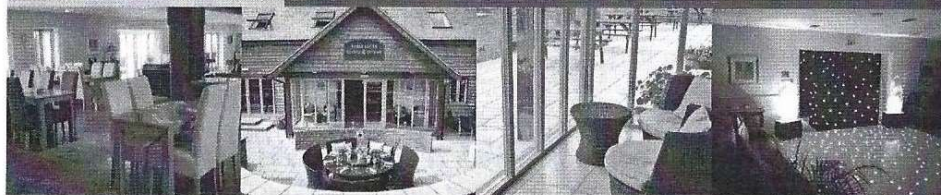
With its modern, contemporary decor, the venue offers you the perfect setting for business meetings or networking groups.

Select from our imaginative menus for a sit-down meal or a more informal buffet, the choice is yours.

There is space for dancing, so a DJ and Disco can be arranged for a livelier party!

With our personal service and attention to detail your event is sure to be one to remember.

Call today on 01525 270220 to book, discuss your personal requirements or arrange a visit.



Tel: 01525 270050

Email: info@threelocksgolfclub.co.uk

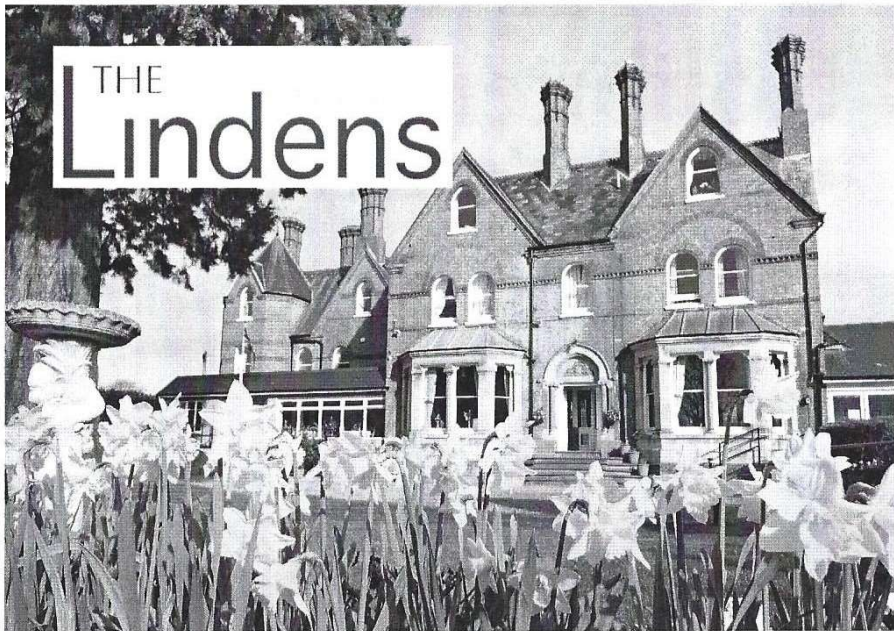
www.threelocksgolfclub.co.uk

Partridge Hill, Great Brickhill, Milton Keynes,
Buckinghamshire MK17 9BH



The Three Locks
GOLF CLUB





THE Lindens

The Lindens is a privately owned care home, set in the tranquil Buckinghamshire countryside, offering individual care for our long-term residents and those visiting us for respite care. We provide a real 'home from home' experience for all our residents and their visitors.

- *24 Hour expert care delivered with compassion.*
- *Well-appointed double & single en-suite rooms with care call systems, televisions, DVD players and Internet facilities.*
- *Meals prepared in house using locally sourced ingredients, individual dietary needs catered for.*
- *Lecture Theatre and Cinema Room.*
- *Morning room available for our residents, guests and visitors to take afternoon tea, enjoy family gatherings and relax with beautiful garden views.*

The Lindens Residential Care Home, Stoke Road,
Stoke Hammond, Buckinghamshire, MK17 9BN

Tel: 01908 371705 E-Mail: info@careatthelindens.co.uk
Web: www.careatthelindens.co.uk

THE Lindens

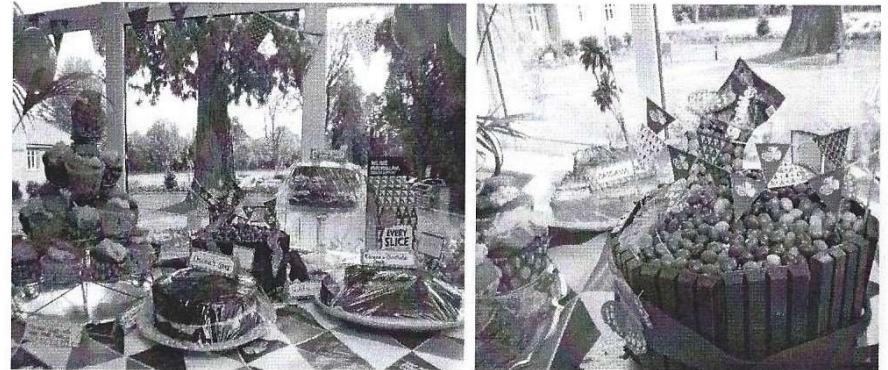
Here at The Lindens we have been as busy as ever fulfilling our aim to be a "Home from Home" for our residents, respite guests and their visitors.

In addition to the usual activities such as our Art Classes, Cinema Club and Prize Bingo, on Friday 29 September a Coffee Afternoon was held with the proceeds going to Macmillan Cancer Support.

Our Kitchen Team baked and iced a selection of cupcakes for the occasion. In addition, our Staff members brought in a selection of home baked and decorated cakes. There were all sorts of different flavours to try, ranging from the traditional classic sponge cake filled with cream and strawberry jam, rich Chocolate and Banana cake, Coffee and Walnut Cake and Cassava slices made with coconut and condensed milk to name but a few. Decorations included smarties, butterflies, skittles and Kit Kats.

There were delicious cream teas with home baked scones, fresh cream and jam always a favourite whether you like these "Devon" or "Cornwall" style!

Our residents, guests, staff and visitors enjoyed catching up over cups of tea, coffee and soft drinks with their choice of sweet treat, heavenly times! Plus, the added bonus of raising over £160.00 for Macmillan.



As you can see at The Lindens, we welcome visitors, so if you would like to call in and join us for afternoon tea or if you are interested in volunteer work here, let our Manager Chris Ryan know, we look forward to meeting you.

Michael Hannelly
Director, The Lindens.

Stoke Road, Stoke Hammond, Buckinghamshire, MK17 9BN.

Tel 01908 371705

Email: info@careatthelindens.co.uk

Web: www.careatthelindens.co.uk

Where can
we take you?



N
NEW CHAUFFEURS
relax experience remember

Arrive in
style, return
in comfort



Airport
Transfers



Corporate
Meetings



Weddings



Theatre



Special
Occasions



Sporting
Events

www.newchauffeurs.com

Call on: 01525 261717 or email: info@newchauffeurs.com



The Pilates Workshop .co.uk

Pilates in Stoke Hammond

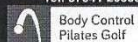
Group Matwork classes at the Community Centre
MONDAYS 9.25am, 10.30am, 11.45am, 7.10pm & 8.15pm

Small Equipment (Overball, Toning Circle, Bands),
Foam Roller, Pregnancy (Antenatal & Postnatal),
Children, Osteoporosis, Scoliosis, Low Back Pain, Golf,
Private Sessions available

Classes also available: Aspley Gulse, Berkhamsted &
Dunstable Studios

Sports Massage Therapy also available

louisa.pilates@gmail.com
www.ThePilatesWorkshop.co.uk
Tel: 07941 203589



Local Carpenter

- With many years of experience
- Good quality work
- Including doors, kitchens, fitted wardrobes and shelving
- Large or small jobs

You can contact James on these numbers:

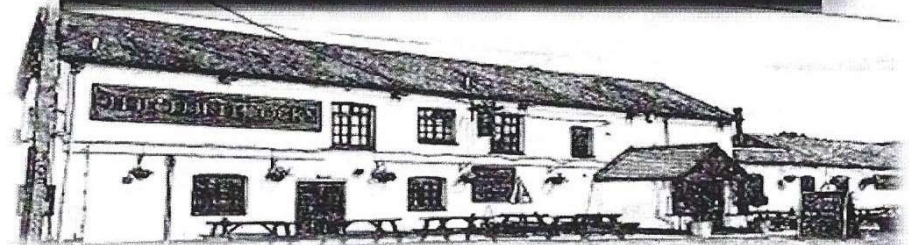
Phone : 07970 750599

Home : 01525 270400

JBContractors

JB Thomas - Proprietor

THE THREE LOCKS



OPEN ALL DAY 7 DAYS A WEEK
DOORS OPEN AT 11.30AM EVERY DAY
KITCHEN OPENS FROM 12PM 'TIL LATE
SUNDAYS 12PM 'TIL 8.00PM

FUN FOR ALL THE FAMILY AT REASONABLE PRICES
10% OFF WITH IWA BOATERS' DISCOUNT

JOIN OUR E-MAIL CLUB FOR UPCOMING EVENTS AND
DISCOUNTS, FREE MEAL VOUCHERS, FREE BOTTLES OF
WINE, WHAT MORE COULD YOU WANT JUST FOR
GIVING US YOUR E-MAIL ADDRESS?

BOOK NOW

01525 270214 / INFO@THETHREELOCKS.CO.UK

OR JOIN OUR FACEBOOK PAGE

WWW.FACEBOOK.COM/THETHREELOCKS

DON'T MISS OUT AT THE THREE LOCKS

OCTOBER 31ST - 31ST - THE ALE
WHISPERER'S TOP 50 NATIONAL REAL ALE
COUNT DOWN

CHRISTMAS PARTIES START
24TH NOVEMBER - 1ST JAN 2018
BOOK NOW!

CHRISTMAS DAY LUNCH 25TH
DECEMBER BOOKINGS BEING TAKEN
NOW!

NEW YEARS EVE PARTY 31ST
DECEMBER
COME AND JOIN US TO CELEBRATE IN
THE NEW YEAR

TICKET ONLY £25 PER ADULT / £15
UNDER 18'S

INCLUDES
THE GRAND BUFFET
MUSIC ALL EVENING
BAR UNTILL 1AM
FIREWORKS
& RIDE HOME

DOORS OPEN 7PM
THIS PUB IS ONLY A 3 MILE DISTANCE
TICKETS CANNOT BE REFUNDED

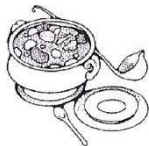
Church News

Review:

Sponsored bike ride: Our Churchwarden Harry Davies has finished collecting sponsor money for the **Bucks Historic Churches Trust**. He raised a total of £135, half of which goes to the BHCT and half to St Luke's. If you're a cyclist and would like to join him cycling next year, please contact him on the number below.

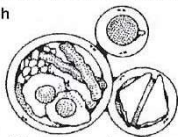


St Luke's Day: We welcomed some new faces to our well attended **Gift Day** on **14th October**, with both light refreshments and delicious home-made soups. If you forgot to make your donation, there's still time. Contributions can be delivered to The Birches, Church Rd or Abbotsford, Newton Rd until 17th of December or contact John below.



Forthcoming Events: Community breakfast: It was nice to see so many at the **community breakfast** last month – one of the busiest we've ever had! This month we will be serving breakfast on **Saturday 11th**

November at the **Community Centre** between 8.30am and 10.30am as usual. A delicious breakfast will be offered along with a warm welcome. It would be lovely to see you!



Remembrance Day: The joint Remembrance day service will take place on **Sun 12th Nov** at **10.45am** at the **Methodist Chapel** this year.

Christmas Fair: St Luke's Christmas fair will be held on **Saturday 25th November** from **2 to 4pm** at the **SH Community Centre**. There will be a variety of craft stalls, a professional photographer, bookstall, Christmas crafts and activities, cake stall, refreshments and of course a visit from Santa himself! Do come down and join us as we start off the festive season with a bang!



Advent: We are fast approaching the season of Advent. But what actually is advent? It's not just a countdown to Christmas with Advent calendars or candles but it is hard to explain without giving an overview of the Christian year, so here goes! There are 3 main Christian festivals in the year:



The first is **Easter** - celebrating the death of Christ (yes, that's right - Jesus' death and resurrection wiped out our sins and blessed us with the grace of forgiveness so that we could be reunited with God, our father in heaven – that's our reason for celebrating)



The second is **Christmas** – God blessed Mary and she gave birth to Jesus who was to become our saviour – another great reason to

celebrate. (Contrary to popular belief, Christmas is not the main Christian festival!)



The third is less familiar and is known as **Pentecost** or



Whitsun. This celebrates the day that God our Father sent the Holy Spirit to be with us after Jesus died, so that we would never be alone again.

Both Easter and Christmas have a period of time beforehand so that we can reflect on the Christian story and spend additional time in prayer and contemplation. Before Easter during what we call **Lent**, people often eat simply and deny themselves pleasures to help them focus on their spiritual thoughts. Before Christmas, a period we call **Advent** is a time of joyful anticipation and preparation. In historic times, all Christians were encouraged to fast before Christmas.



The most important aspect though is spiritual reflection. Christmas itself is officially a **12 day feast** (that's when you were actually supposed to do your indulging!) starting on Christmas eve and leading to Epiphany or twelfth night on 6th January! So now you know!

As Christmas is a bit of a hectic time with lots of commitments, we'd like to give you advance warning of Christmas service dates, especially as they are not at usual times: schedule them in your phone or calendar now, so you know when they are. We look forward to seeing you!

3rd Dec	4pm	Christingle service* (in aid of The Children's Society)
10 th Dec	4pm	Carol service (9 lessons and carols)
17 th Dec	9am	Morning Worship
24 th Dec	4pm	Crib service (Aimed at children, but open to all)
24 th Dec	11.30pm	Holy Communion (Midnight Mass)



* For those unfamiliar with the Christingle ("Christ light") service, it originated in Moravia in 1747. Participants are given an orange with a candle to represent Christ in the world. The service is aimed at children but open to all.

Church Benefice Website: www.brickhillschurches.org.uk. If you want to come to a service, all church service times are listed on the website, along with contact details for the Rector.

If you would like to come to church but have mobility problems please ring John (see below) regarding transport. If you would like to volunteer to help, have a prayer request or enquiry, please ring **Harry: Churchwarden, on 07773065271, Diane: Assistant Churchwarden (unofficial), on 270409 or John: Treasurer, on 270202.**



PRIVATE SWIMMING LESSONS

Given to adults and/or children
in small heated in-door pool by
Qualified Swimming Teacher

Telephone for full details
01525 240240

Mutleys Dog Grooming



Located in Stoke Hammond

Call Tina on 07725 404714

- Pick up and drop off service can be arranged
- Nail clipping
- Specialised breed stripping
- All grooming requirements catered for
- Evening and weekends appointments available

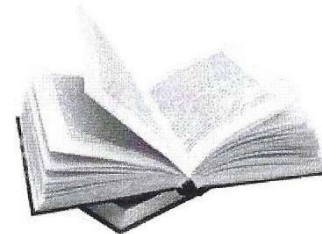
Brian's Lawn & Garden Services

- Grass Cutting
- Hedge Trimming
- Garden Tidy ups
- Regular Service
- Friendly & Reliable
- Lives in Stoke Hammond

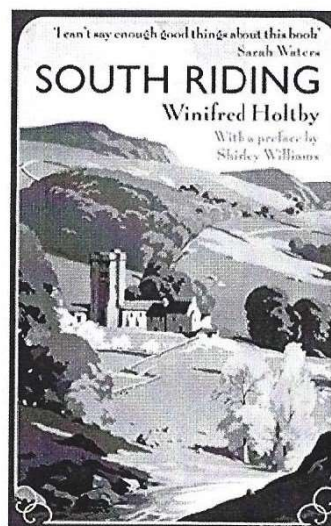


Call Brian 01525 270295
Free Quote 07903 887416

STOKE HAMMOND BOOK CLUB



This month's book is **SOUTH RIDING** by Winifred Holtby



We knew that this book had been made into a popular TV series and we therefore suspected it would be a good read. At the start there were lists of the innumerable and diverse characters and some of us doubted if we would cope with them all. However, as the book progressed each one was introduced and gradually fitted in to the story in a quite amazing way. The book is set between the wars and illustrates how life was in Yorkshire for all layers of society at that time. The main character, Sarah Burton, is the new headmistress of a school much in need of improvement and she struggles as an ambitious woman in a man's world having to cope with the restrictions and prejudices women faced at that time.

Page by page one gets to know the people involved in the story including local councillors each trying to get their own way over planning matters whilst trying to give the impression of community care, land owners fallen on lean times or looking for a deal to make a hefty profit, promising students who are held back by social problems and lack of money - in fact many of the situations and events that are still around today. On the romantic side - Sarah's desire for some sort of relationship with the other main character, Robert Carne, is both sad and touching and does not have a happy ending. All the group enjoyed the book in their own way each of us having different sympathies with the characters' stories. The next month's book is 'Five Rivers met on a Wooded Plain' by Barney Norris who is described as 'one of our most exciting young writers' so we shall see!

Get fit the fun way this Autumn with Cardio Tennis!

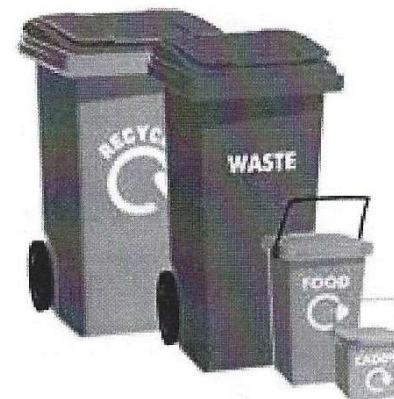
- 🎾 Classes held at Great Brickhill Tennis Club
- 🎾 10:30 – 11:30 am every Wednesday until 6th December
- 🎾 First lesson is FREE! Then each session just £4
- 🎾 No need to join the Club
- 🎾 A great way to keep fit whilst being distracted by a tennis ball!
- 🎾 No tennis skills required, although you'll pick some up along the way



clubspark.lta.org.uk/greatbrickhilltc



WASTE COLLECTION DATES



Waste Bin: 	Recycling Bin:  <small>Paper, glass, cardboard, plastics, cartons, cans & tins</small>	Food Waste Bin:  <small>Non-recyclable or compostable.</small>	Garden Waste Bin: 
Thursday 26 October		Thursday 26 October	
	Thursday 2 November	Thursday 2 November	
			Monday 6 November
Thursday 9 November		Thursday 9 November	
	Thursday 16 November	Thursday 16 November	
			Monday 20 November
Thursday 23 November		Thursday 23 November	
	Thursday 30 November	Thursday 30 November	
Thursday 7 December		Thursday 7 December	
	Thursday 14 December	Thursday 14 December	
Thursday 21 December		Thursday 21 December	

PICTURE FRAMING by COUNTRY FRAME



EST 1984

The Complete Picture Framing Service

Expert advice and framing on:
Prints, Posters Water-Colours, Oil Paintings, 3D objects and all types of needlework

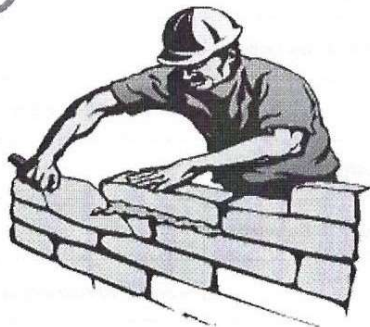
A huge range of mouldings to suit everything
and over 100 different colours of quality mounting boards

Contact: **Paul Body**

10 Fishweir, off Chapel Square, Stewkley, Leighton Buzzard, LU7 0HB

www.countryframe.co.uk

T: 01525 • 240163 M: 07771 • 508805



J & J LUXFORD LTD BUILDERS

For all your building needs
Project managed
From design to completion

EXTENSIONS / NEW BUILDS

Contact us
Office: 01525 240637
07885455203 –
07860726741

12 Ivy Lane
Stewkley
Leighton Buzzard
Beds LU7 0EN

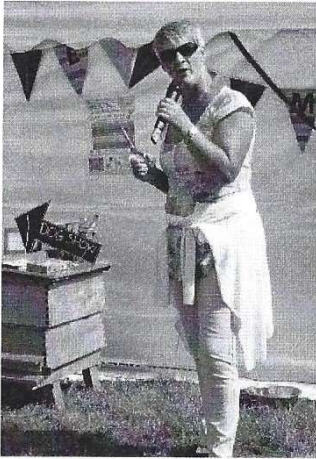
Tel: 01525 240637 & 01525 240746
Mob: 07860 726741 & 07885 455203
Fax: 01525 240827

www.luxfordbuilders.co.uk



ALISON SHEEHAN

By Barbara Munn



When Alison opened the village fete in September she introduced herself as, "The loud woman on the bike." My impression is of a very happy woman who loves to laugh and doesn't take herself too seriously. Enthusiastic, practical and sociable best describe Alison. Having had careers as both a nurse and a policewoman she certainly seems the person you would want to be around in a time of difficulty. The Leighton Buzzard Observer described her as, "A lady of character." She says she has embraced life in Stoke Hammond meeting lots of lovely people through her children's activities and has maintained these friendships.

- ***Tell me more about the bike.***

When I moved to the village in 1991 I rode a very heavy 1945 Rudge with a basket in front which was very useful especially whilst my children were small. Quite recently my husband Mick took pity on me as the old bike seemed to be getting heavier and heavier and the brakes were no longer safe. So now I have a new bike; still the same style and still with a basket. I use it to get to all the activities I am involved in around the village.

- ***Did you grow up in the village?***

No, I was brought up in North Mimms near Hatfield. I am the youngest of five daughters and a twin. There was, unsurprisingly, always a lot going on in the household and as a result we all learnt to speak up to be heard. I guess that's why I think of myself as a loud woman. One of my sisters now lives in Australia but I am in very regular contact with all of them.

- ***What about your education and career?***

I was educated at the local comprehensive school and then at 18 went to The London Hospital to train as a nurse, later specialising in cardio-thoracic nursing. The main reason I chose this career was that I had been very involved in caring for my father and had found it rewarding and enjoyable. Daddy had a long history of ill health and sadly died when I was 15. I stayed in London until 1983 when I left to get married and moved to Bedford Hospital as a staff nurse in a general surgery ward. Before I ever thought of nursing my career ambition had been to become a police officer. So, in 1984 I joined Bedfordshire Police Force and spent 5 years as a WPC in Leighton Buzzard, Dunstable and Luton. At the time it wasn't possible to work part-time as a police officer so I left in 1989 when I was expecting my first child. After the births of my son and daughter I returned to nursing in 1991 and worked nights for 5 years in ITU at Milton Keynes Hospital. After that I became p.a. to my husband who runs his own business marketing outdoor pursuits clothing and associated products. In 2004 I became a part-time house parent at Tring Park School for the Performing Arts. It was very convenient to have the school holidays and I still enjoy working there now.

- ***You're rightfully proud of what your children have achieved.***

Our son Rory is now 28. He left school at 16 with dreams of becoming a chef and trained at Paris House under Peter Chandler. Since then he has worked at a number of top restaurants namely, Pont de la Tour, London, The Berkley under Marcus Wareing, Faviken in Sweden, Kitchen Table, London and L'Eclume in Cartmel, Cumbria. Recently he returned from 2 years in Australia and now he is at L'Eclume again which is run by top chef Simon Rogan and has 2 Michelin stars. Rory is the Development and Farm Manager and the restaurant grows its own produce for use in the kitchens. Cooking still features in Rory's role as he helps develop the establishment's new menus.

Molly, our daughter is 26 and a staff nurse in the A and E Department at King's College Hospital, London. Her ambition is to join Medicin Sans Frontieres and she has recently completed a Diploma in Tropical Medicine for Nurses.

- ***I know that you are also a keen cook and win so many prizes at the village show. Looking around I can see stacks of recipes as well as a huge Aga.***

Both my husband and I enjoy cooking and Mike now prepares more of the meals than I do and is an excellent and adventurous chef. I inherited a solid fuel stove but now have a 4 oven oil powered AGA. There was a long learning curve and lots of burnt offerings before I learnt to love it but now I think of it almost as a third child. I think my Aga is the reason I do so well in the show.

- **Many people know you through your involvement in local causes and associations.**

I came to the village with a toddler and wanted to meet other mums and get involved in village life so I became treasurer of the playgroup and then joined the Stoke Hammond Community Association as a committee member. Together we raised funds to buy the old school building which is used as the Community Centre. I remained a member until 2006 when I left feeling it needed new ideas. Then came the issue of the possible siting of wind turbines at the edge of the village. I joined the protest group and headed the fundraising committee; events included quiz nights and the Woodstoke Festival. Finally, after 4 years we succeeded and we have no turbines.

- **You live in a beautiful old cottage. What can you tell us about it?**

Orchard Cottage has 2 sections the older of which dates back to 1553 so it must be one of the oldest properties in the village. Originally it was owned by a family called the Herndales who lived here for at least 200 years. When we bought it in 1991 it was very rundown but my husband felt it had potential. Like most old houses it has no real foundations. Some years ago, a huge rotten redwood conifer was felled in the churchyard opposite and I felt the entire house lift. We lived in the original cottage as it was for 13 years and finally finished renovating the tiled section in 2004. It has a lovely atmosphere, we never imagined it could look as it does. We're also lucky enough to have a beautiful garden with lots of fruit trees – hence the name – Orchard Cottage. One year our orchard produced enough apples to give us 273 bottles of apple juice.

- **Many old houses are said to have ghosts, are there any stories attached to Orchard Cottage?**

Visitors have occasionally thought they have seen a man standing at the bottom of the stairs. My husband says he has heard children's voices in his study – and that part of the building was a school many, many years ago.

- **In your spare time?**

Open water swimming has long been a great pleasure for me and it got me back into competitive pool swimming. I train 3 times a week and compete all over the south of England, especially in back crawl, for South Beds Masters. My husband and I created the garden from the wilderness we inherited from the previous owners and we spend a lot of time keeping it in check. My father made all his 5 girls watch cricket, rugby and boxing as he so wanted a boy; I still enjoy watching them, especially rugby.

- **Choose a favourite meal.**

Difficult, but: goat's cheese with cranberry sauce in puff pastry on a bed of rocket followed by a fillet steak in a good pepper sauce, dauphinoise potatoes and French beans. I don't often have dessert but my husband makes a fantastic pannacotta with berries. I'd opt to eat at home as it's so good for entertaining and Mick is such a good cook.

- **What about eating out?**

I'm very spoilt, my son's job has enabled me to eat at some top class restaurants. Locally I have eaten very well recently at The Crooked Billet in Newton Longville.

- **Holidays?**

I love North Cornwall where the family still has connections and we go on walking breaks with the family dog. Otherwise we visit Greek Islands to enjoy sun, sea and fish.

- **Recommend a good book**

All the light you cannot see, by Antony Doer because of the beautiful way he uses words

- **If your younger self could see you now what would she think?**

She's still as loud and still as enthusiastic!

SENIOR CITIZENS CHRISTMAS LUNCH



AT THE COMMUNITY CENTRE, FROM 13.00 ON SATURDAY 2nd DECEMBER

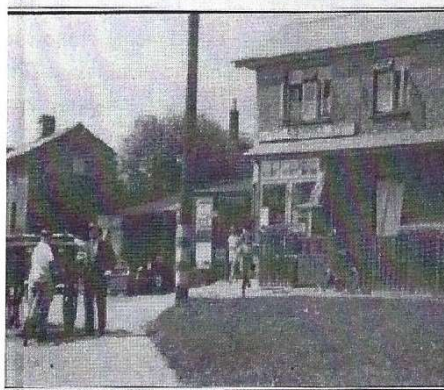


**TO RESERVE YOUR PLACE - PLEASE CALL
DONNA PAGE ON 01525 270239 OR
email: shcommunitycentre@gmail.com
PLEASE ADVISE OF ANY SPECIAL DIETARY
NEEDS OR IF TRANSPORT REQUIRED**



STOKE HAMMOND YESTERYEAR A PERSONAL RECORD 1925 – 1948

STOKE HAMMOND YESTERYEAR



MARGARET AITKEN

Stan Andrews, the baker from Souldbury stands outside Bonner's with his cart. Assisting him is Raymond Kirk, who was in the author's class at school.

We are most pleased to be continuing with the publication of extracts from Margaret Aitken's book 'Stoke Hammond Yesteryear' first published in 1997 that provides an amazing insight into the life of our village in years gone by. Many thanks to Margaret for granting us permission to publish these extracts. We now reach chapter 8; 'FUN and GAMES'.

FUN AND GAMES

When the old Methodist Chapel near the Green was no longer used for worship it was sold and converted into a village hall. The building was gutted and a small piece of land at the back purchased to build an extension for kitchen toilets. The inside was redecorated and a committee set up to run it. Small tables and chairs were purchased and now the residents of Stoke Hammond had their own meeting place.

In those days we made our own entertainment – and the village hall was where it happened. Every Friday evening

for many years my father organised the weekly whist drive, which was always well attended. Most weeks there would be 10 or 12 tables occupied and he acted as Master of Ceremonies. Jean and I were keen whist players and cycled to Drayton Parslow, Great Brickhill and, sometimes, on a Saturday evening to the Scout's hut at Leighton Buzzard, where we played as partners.

Then there were the village dances. The music was usually provided by just a piano and drums but we still managed to have a good time. There was a fair mix of Old Time and Ballroom dancing, both of which we enjoyed. The local boys congregated on one side of the hall while we girls whispered together on the other. The boys seemed reluctant to ask us to dance but we did not mind all that much because we danced together, and we were much less likely to have our feet trodden on!

Concerts of all kinds were staged in the village hall, sometimes by visiting concert parties and sometimes by local talent. A wobbly stage made up of trestle tables was erected and curtains hung across the front of it, with rickety steps leading onto the stage. We sometimes feared for the safety of the dancers as they performed their routine.



ABOVE: A group of WI members, taken in the Village Hall, 1954
BELOW: The Dolphin Inn where the cricket team went for tea.

The village hall was used for all sorts of things, including wedding receptions – mine was held there. During the winter months various social evenings were arranged. These consisted of organised games, competitions and dancing, followed by refreshments. Money-raising events like jumble sales and Christmas bazaars were also held, as were evening classes. The Old Time, Ballroom and Country Dancing classes were always patronised to capacity.

The Women's Institute, founded in 1947, held their monthly meetings there, and a large proportion of village women attended. In those days there was an active drama group, which performed plays and sketches,

there was also a WI choir, which gave concerts in the hall and entertained at local old people's homes.

Another organisation to use the village hall was the Parish Council, in which local councillors discussed the best way of providing services for the residents of Stoke Hammond. Now the Parish Council and all other organisations meet in the 'new' school, which was closed some years ago because of falling rolls. The old hall became derelict, but a member of the Kirk family has bought it and is now in the process of turning it into a dwelling house.

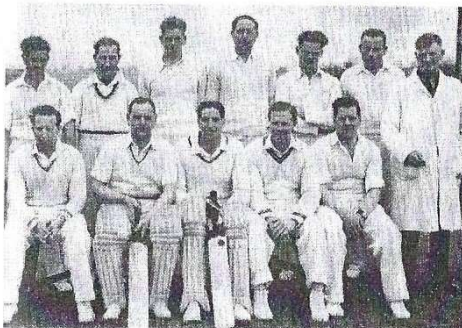
On the sporting front, Stoke Hammond has always been an enthusiastic and competitive cricketing village. My father, brother, uncles and cousins all played, as did many other village men and youths. The captain never had any difficulty in selecting teams for Saturday matches – it was more a case of who to leave out!

The cricket pitch was located in the Kirk's first meadow. It was protected by a removeable wire fence, which prevented the herd of cows from wandering on to the green. The outfield was rough and at times quite hazardous, particularly in early summer when the cows had been grazing the new grass.

Looking over the five-barred gate on the bend of the road opposite Moat Farm, the distant pitch was bounded at the far end by the railway embankment and by the brook on the right-hand side. Sloggers had no difficulty in scoring a six when they hit the ball onto the railway bank or into the brook, from which some luckless fielder had to retrieve it.

On the left-hand side close by the hedge was a small wooden 'pavilion' built by Mr Rice. It served as a changing-room for the players and as vantage point for scorers to record the progress of the match. One or two wooden benches were placed in front of the pavilion for the older parishioners to sit on while the rest of us lounged on the grass. The only excessive noise was when a steam passenger train roared by on the railway track, or when a goods train clattered past in its own good time.

There was great rivalry between the village teams, and we girls had our favourites, based not so much on playing abilities as on individual players. At half-time the players walked up the road to the Dolphin Inn where tea had been prepared for them. Spectators either picnicked or cycled home for theirs, returning later to support the home team.

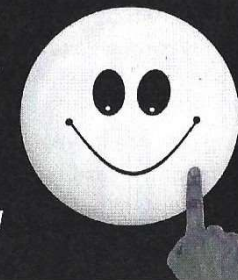


ABOVE: Stoke Hammond cricket team: left to right: D. Stanesby, F. Bonner, G. Shackshaft, K. Murphy, D. Denchfield, F. Collins, C. Scott (Umpire), J. Goodman, C. Hallwood, S. Kirk, B. Tearle and R. Stanesby. BELOW: The football team: A. Shackshaft (Referee), D. Denchfield, D. Stanesby, R. Emmerton, G. Denchfield, W. Kirk, G. Shackshaft, L. Sharman, D. Barker, G. Stanesby, B. Stevenson, and A. Aitken

NEXT MONTH , CHAPTER NINE
- OFF TO WORK!

SMILING

*Smiling is infectious, you catch it like flu
When someone smiled at me today I started to smile too
I walked around the corner and someone saw me grin
When he smiled I realised I had passed it on to him
I thought about that smile and then realised its worth
A single smile like mine could travel round the earth
So if you feel like a smile begin don't leave it undetected
Lets start an epidemic and get the world infected*



These Fit So Well They Should be in a Dictionary

ADULT:

A person who has stopped growing at both ends and is now growing in the middle.

BEAUTY PARLOR:

A place where women curl up and dye.

CHICKENS:

The only animals you eat before they are born and after they are dead.

COMMITTEE:

A body that keeps minutes and wastes hours.

DUST:

Mud with the juice squeezed out.

EGOTIST:

Someone who is usually me-deep in conversation.

HANKERCHIEF:

Cold storage.

INFLATION:

Cutting money in half without damaging the paper.

MOSQUITO:

An insect that makes you like flies better.

RAISIN:

A grape with sunburn.

SECRET:

Something you tell to one person at a time.

SKELETON:

A bunch of bones with the person scraped off.

TOOTHACHE:

The pain that drives you to extraction.

TOMORROW:

One of the greatest labour saving devices of today.

YAWN:

An honest opinion openly expressed. And MY Personal Favourite!

WRINKLES:

Something other people have, but mine.....character lines.



HOW LONG ...?

does it take to lay a row of bricks 75 yards? How long does it take to rough screed a 6 foot high wall 75 yards? And how long does it take to drill 148 holes and bolt in 75 yards of handrail? These questions have been dominating the village for (it is believed) in excess of 3 months. It may be a little less but it is probably a bit longer. Certainly, it is so long no-one actually remembers!

Research suggests the world record for laying bricks is a tad short of 1000 in an hour. Realistically I believe 50 an hour would be a good job. If a brick is 4 inches and the mortar is ½ inch thick then 12 hours should cover 75 yards. Plastering an average indoor room wall is going to take around 3 hours: rough screeding say an hour and a half. 75 yards – max 23 hours. Drilling and bolting railings will be approximately 15 minutes per stanchion say 37 = 9 hours. Time to date 44 man hours!

And how many “workers” have we had on our village job. It seems to average 4 to 6. It’s got to be at least 4 as there is usually 4 vehicles in attendance. I highlighted workers” but I think we also have philosophers, shovel leaners, tea drinkers and general voyeurs.

It has been suggested that it’s taken as long to do our stream wall (incidentally the leeward side not the force bearing bank) as it has McCann’s to put up 3 of their houses. Does this represent the difference between private and public expenditure? I know of one couple in the village who have a bet on between themselves. £5 for the first one who spots a workman working.

Hopefully by the time this reaches print the job will be done and dusted – well maybe!!

Since penning this epistle, I have seen an e-mail from the Structures Team Leader at Transport for Bucks. It states “there has been an injury incident to one of our workers on site. As such, this site was effectively shut down last week.” (not the best grammar). I’m not sure what this has to do with delays to date nor can I see why the loss of one team member closes down the whole project. I can only guess that the injured person was the teamaker who has scalded himself and obviously no team can work without a continuous supply of tea.

G.O.M.

Stoke Hammond Service Centre Bletchley

UNIT D, LYON ROAD, BLETCHLEY MK1 1EX

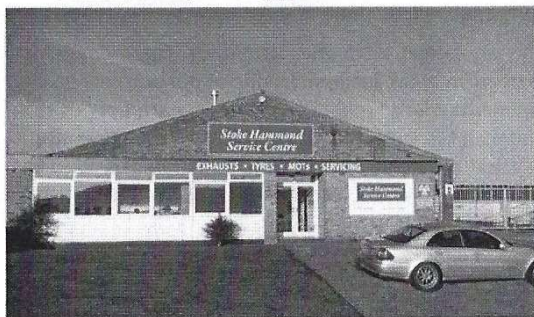
Tel: 01908 371110 & 01525 279009

Tyres ★ Exhausts ★ Servicing ★ MOTs ★ Diagnostics ★ Clutch ★ Engine

Established in 2006 and now one of the most accredited service centres around.

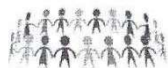


- ★ Free local collection and return.
- ★ Very competitive prices.
- ★ RAC inspected - 100%.
- ★ AA Select Garage.
- ★ MOT Testing Station.
- ★ Trading Standards, CAB, CVTS Approved.
- ★ All makes of car catered for.
- ★ Pleasant waiting area with hot drinks machine.





STOKE HAMMOND COMMUNITY CENTRE



Serving the community

TOGETHER LET'S MAKE 2017 BETTER

SUPPORT LOCAL CAUSES, WIN PRIZES UP TO £25,000

- 60% of all tickets sold go to good causes in the Vale!
- Win prizes of up to £25,000!
- Tickets only cost £1 per week!
- Buy your tickets from our page and we get 50%!
- Give us your support this year!

www.valelottery.co.uk/support/vale
01296 82 12 12

Supporters must be 16 years of age or older

STOKE HAMMOND SPORTS CLUB

Sports Club Events:-

Sat 28th October - Youth Football Halloween Party

Tickets £5 per child incl free hotdog
BBQ food on sale for adults
Fancy dress competition Pumpkin Carving

Tickets call Nala 07976 640763

Fri 10th November - Youth Football Quiz

£10 per person including supper
Maximum number in a team 6

To book team call Nala 07976 640763

Sat 25th November - Italian Night

3 course Italian Meal
With entertainment
£25 per person

To book call Mel 01525 270878

The cricket season is over with the Saturday Team staying in the 3rd Division and Sunday's having lots of friendly games.

Football season is now underway with the youth teams and senior teams Good Luck to all Teams.

Whilst the Sports Club committee is very grateful to the dog walkers who clear up after their pets, we would appreciate if they could deposit bags in the appropriate bins. The bins outside the club are for rubbish only, children use these bins and it's not nice for them to have to put hands where dogs mess is and sometimes bags are just left on the floor near the bins. Thank you once again to the responsible dog owners.

stokehammondsportsclub@gmail.com



HEADY PLANTS

PATIO, PATH AND DRIVEWAY
CLEANING WITH PETROL
PRESSURE WASHER

CUTTER CLEANING WITH
HIGH REACH VACUUM

FOR A FREE QUOTATION
PLEASE CALL 0789297547



PLANT NURSERY FOR YOUR SEA-
SONAL PLANTS NEEDS ,COMPOST
AND BIRD FOOD.

STOKE ROAD, NEWTON
LONGVILLE MK 17 OBG

OPEN SATURDAY AND SUNDAYS



3 BAGS OF
COMPOST
£10

www.headyplantsandcleaning.com

AARON CARPET CLEANING MK

07549 149902 / 01908 579635

QUALITY, VALUE, PROFESSIONAL SERVICE

STAIN REMOVAL, ODOUR CONTROL,
SCOTCHGARD® TREATMENT,
UPHOLSTERY AND RUGS CLEANED

LOUNGE FROM	£40.00
DINING ROOM FROM	£40.00
HALL + STAIRS FROM	£40.00
BEDROOM FROM	£30.00
2 BED HOUSE FROM	£120.00
3 BED HOUSE FROM	£140.00
4 BED HOUSE FROM	£160.00

FREE, NO OBLIGATION QUOTATIONS
WEBSITE - www.aaronmk.co.uk



SHARE YOUR FAVOURITE RECIPE



SOMETHING FOR ALL THE FAMILY TO ENJOY!

GINGERBREAD *from Donna Page*

INGREDIENTS:

170g butter or margarine
140g soft brown sugar
1tsp ginger or mixed spice
340g Self Raising flour
225g raisins or sultanas

225g Golden syrup
225g black treacle
250ml milk
1 large egg
1 tsp bicarbonate of soda

METHOD:

Melt butter in a large saucepan
Add and warm together golden syrup, sugar, black treacle and spice
Add milk, dried fruit, egg(beatn), bicarb dissolved in a dessertspoon of hot water and flour stirred in with a whisk
Spread in large lined and greased roasting tin and cook for 40 minutes at 180 C



BON Appetit

**“Why leave the comfort of your own home
to have a great haircut?”**

I am one of Britain's top stylists with
over **10 years' experience** as manager
and **Art Director for Toni and Guy.**

Book me to come to your home at a time of your choosing

**50% OFF INTRODUCTORY OFFER
FOR ALL NEW CLIENTS**

Tel: 07738658234

Email: sumin@superhairday.co.uk
www.superhairday.co.uk



*Visit Superhairday on Facebook for 33 of 5star
reviews from my clients and pictures!*



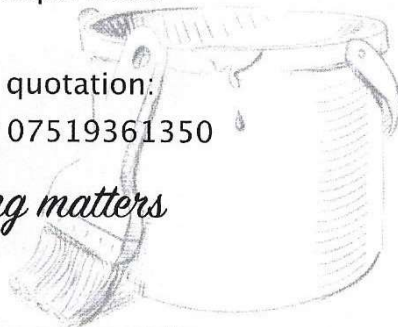
Painting & Decorating

Dave Elliott

Your local painter, decorator & handy man
with 40 years experience

Call for a free quotation:
01525 270857 or 07519361350

For decorating matters



POPPY APPEAL 2017

Most of you know I have had an eye operation and no doubt while you are reading this I will be on my tummy with my head hanging over the side of the bed wishing the time away!

However, the Poppy Appeal comes round just like Christmas does every year and so Poppy boxes with poppy brooches 1917-2017 on them, bracelets, snap rulers, dog collar reflector poppies, car poppies as well as the usual poppies will be on sale in the Food and Wine village shop, The Dolphin, The Three Locks Public House, The Sports Club, The Boot at Soulbury from October 27th until November 11th.

My apologies to those who are housebound I won't be doing a door to door delivery as I am not allowed to let any foreign bodies in my eyes for up to twelve weeks! I am hoping David Sharman will put the poppy crosses on the graves as usual for me. So thank you David in advance!

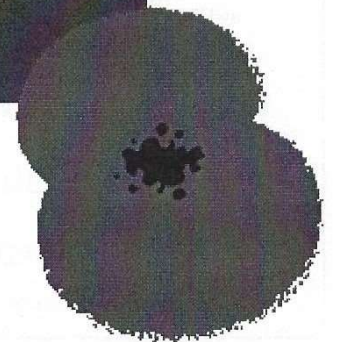
My thanks in advance to you all for helping me out by buying a poppy over this difficult period. I am not one to lie about doing nothing as you will all be aware!

Poppy counting will be done shortly after Remembrance. The service this year will be in the Methodist Church starting promptly at 10.45.

Wreaths will be laid in St Luke's immediately after the service at approximately 12.05.

Hazel Turner

Poppy Appeal Organiser
Soulbury and Stoke Hammond.



metafit
BODYWEIGHT TRAINING

**The 30 minute class
that lasts 24 hours**

- Tone the muscles
- Boost the metabolism
- **BURN THE FAT!**

**THIS AINT NO
DANCE CLASS**

Tuesday 9am & 9.30am
Wednesday 7.30pm
Friday 9am & 9.30am
Stoke Hammond community centre
Only 4£ per session
Contact Lizzy on 07753138276 or lizzylauder@yahoo.com

Dave Reid
Property Repairs &
Alterations

Fully Qualified Carpenter

kitchen & bathroom upgrades
staircase conversions
replacement doors
general maintenance
small building work

07939 146630

davereid935@btinternet.com

based in Soulbury

iPhone Repairs

- * Screen repair
- * Battery replacement
- * Charging port
- * Headphone jack
- * Speaker
- * And more

Glass screen protectors are available for free when a screen repair has taken place

- ✓ Based in Stoke Hammond
- ✓ Pick up and drop off service available

Contact Arran for a quote:
07592 060871 arran6131@gmail.com

STOKE HAMMOND COMMUNITY ASSOCIATION

The quiz night held at the Community Centre on the evening of Saturday 30th September was a thoroughly enjoyable event. Some eight teams took part, and everyone enjoyed a complimentary drink on arrival, followed by an evening of table drink service, a splendid Chilli or frankfurter meal along with side plates of chips. Over the ten rounds of questions which also included a picture round, the 'Tyrells Tyrants' proved the most successful team of the evening – who knew a gathering of Hedgehogs is known as an Array –



Well 'Tyrells Tyrants' did!! To round off the evening a highly amusing and entertaining round of 'Play Your Cards Right' took place. Maybe as a consequence of too much use of the table drink service, but it took many attempts before someone finally managed to guess the correct sequence of 'Higher' or 'Lower' card values and gain the first of two available cash prizes! The evening raised in excess of £300 for the Community Association, which will be added to the funds for the purchasing of new tables and chairs for the Centre.

Well 'Tyrells Tyrants' did!! To round off the evening a highly amusing and entertaining round of 'Play Your Cards Right' took place. Maybe as a consequence of too much use of the table drink service, but it took many attempts before someone finally managed to guess the correct sequence of 'Higher' or 'Lower' card values and gain the first of two available cash prizes! The evening raised in excess of £300 for the Community Association, which will be added to the funds for the purchasing of new tables and chairs for the Centre.

Well 'Tyrells Tyrants' did!! To round off the evening a highly amusing and entertaining round of 'Play Your Cards Right' took place. Maybe as a consequence of too much use of the table drink service, but it took many attempts before someone finally managed to guess the correct sequence of 'Higher' or 'Lower' card values and gain the first of two available cash prizes! The evening raised in excess of £300 for the Community Association, which will be added to the funds for the purchasing of new tables and chairs for the Centre.



We're also most pleased to announce the launch of our new website. It's still being tweaked but please do take a look



www.stokehammondcommunitycentre.com

STOKE HAMMOND COMMUNITY CENTRE



Serving the community

STOKE HAMMOND YOUTH FOOTBALL CLUB



**STOKE
HAMMOND FC**

Stoke Hammond Youth Football Club are looking for additional land to train / play matches on within Stoke Hammond or the surrounding area. If you have any

land that you would potentially be willing to rent that would suit this purpose, please contact David Rutland on 07801 446039.

The Dolphin Public House



Telephone: 01525 - 270263

LARGE GARDEN • PLAY EQUIPMENT

FREE POOL on THURSDAY

Licensed Hours:

Mon - Thurs	16.00 - Midnight
Friday	16.00 - 02.00
Saturday	12.00 - 02.00
Sunday	12.00 - 22.30

ALL Bank Holidays 12.00 - Midnight



MAVIS'S QUIZ

Answers to last month's quiz:

- (1) Widow (2) Window (3) Ring (4) Run (5) Cover
(6) Counter (7) Fly (8) Dust (9) Dumb (10) Draw

For this month it's more of the same I'm afraid, remember you have to think of a word that can be put before or after the 3 words:-

- | | |
|-----------------------|----------------------------|
| (1) Skate, Room, Card | (2) Cry, Face, Sit |
| (3) Date, Chat, Stage | (4) Field, Tight, Lock |
| (5) Test, Rain, Drop | (6) Post, Dialling, Secret |
| (7) Pot, Music, Maid | (8) Burglar, Call, Nap |
| (9) Fly, Cup, Bean | (10) Worm, Case, Mark |

As always, the very best of luck

Answers next month!



Computer, Telephone and Broadband Specialist

No Fix No Fee Policy • Free Survey

Great rates for Stoke Hammond villager's

Networking, Broadband, Telephone
VOIP and IT Specialist

Virus/Malware removal a speciality

*VOIP is a bit like Skype but in my opinion better ---
1 internet connection and multiple telephone numbers
all over your broadband connection.*

Been in the Industry for over 30 years and have full liability Insurance, The Managing Director was personally responsible for getting high speed broadband to the village of Stoke Hammond and he wants all villagers to get the most out of this at a reasonable cost. He was on the SDLT executive committee and has helped out at numerous village and Church events with his "hobby" of PA/Audio.

Local references available upon request.

Call 01525 888166 or 07740 852836

alternatively email: techdean@techdean.co.uk for a free no obligation survey.

Or go on Facebook and search Techdean

Company registration number 9352505

STOKE HAMMOND RHYTHM OF LIFE SINGERS

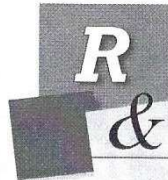
Since our first meeting in January 2016 we now have a regular band of happy singers who meet every week singing a variety of genres from musicals, pop and rock n roll songs which span the decades from the 1940's to the present day.

We always offer a warm welcome to new members who want to sing just for the sheer pleasure of it. Our group is very informal with FUN being the main emphasis. So, if you'd like to join us but "think" you can't sing don't worry, there's no pressure. But you will soon realise that anyone can improve on their singing voice and have a whole lot of fun at the same time.

We are happy to do a 'sing a long' at any venue or group with any funds being raised going to Willen Hospice.

We meet Wednesday 7:15pm - 9:00pm at the Sports Club, Bragenham Side. Call 07522 949524





Est. c.1872



**Monday to Friday
8:30am - 5:30pm**

... What can we do for you?

Office and Personal Stationery
Computer Printer Inkjet & Laser Cartridges
Bespoke Raffle Ticket Printing
Business and Personal Calendar Printing
Bespoke Bereavement & Wedding Stationery
Text, Graphic & Photo Poster Printing
Building and Engineering Plan Printing
A4 & A3 Digital Copying and Printing
Thesis Printing with Comb or Wire Binding
Encapsulation up to 600mm width

RUSH and WARWICK Ltd

Unit 1 • Acacia Close • Cherrycourt Way
Leighton Buzzard • Bedfordshire • LU7 4QE

T: 01525 • 372205 E: sales@rushandwarwick.co.uk

STOKE HAMMOND WOMEN'S INSTITUTE

It was the Group Meeting in October so we had 30+ attendees with visitors from Soulbury, Bow Brickhill and Great Brickhill. The meeting was chaired by Krystyna as acting president and the secretary's role was taken by Andrea from Soulbury. Each W.I. reported on their activities for the year and an update on the fluctuating membership. What an exciting and diverse bunch we are. We all agreed that the membership was a problem, some discussion took place and this will be raised again at the monthly meeting.

Krystyna gave a resume of what we in Stoke Hammond had achieved in the year, not only had we had some very good speakers but we had also made two trips - one to the Sikh temple in Milton Keynes and the other to the Panacea Museum in Bedford. Both trips are highly recommended and we all agreed that our interests and knowledge are greatly enhanced by belonging to the W.I.

Our speaker for the evening was David Abbott who gave a most interesting talk regarding the children who were evacuated during WW2. To our astonishment we learnt that it has been estimated that over 1.5 million children were moved during that time. Some went to very caring homes others to farms where they were often used as child labour. His experience was a very positive one and he had kept in touch with his adopted family after he returned home. We followed the talk with a raffle and the letter competition was won by Dawn. Next came a wonderful supper provided by the Stoke Hammond members - it appears no one wanted to leave as they were having such a good time!

Our next meeting will take place on Tuesday November 14th. 7.30pm at the Community Centre, Bragenham Side. As mentioned, it is our Annual Meeting and so the official business will be followed by a craft half hour. The competition will be 'U'.

It is important that as many members as possible attend the Annual Meeting so we look forward to seeing everyone there.

STOKE HAMMOND COMMUNITY ASSOCIATION

Why not hire the **Community Centre** or the **Meeting Room** for your party or business meeting. Discounted rates for residents of Stoke Hammond. To book or discuss your requirements please call **01525-270501** or email: shcommunitycentre@gmail.com



TAKE A LOOK AT OUR NEW WEBSITE
www.stokehammondcommunitycentre.com



PAGEY'S SOW and GROW "PATCH"

So no real Indian summer to speak of this year, apart from a week of warm southern air before Ophelia blew past. Most of us are harvesting what is left of our summer veg for storing or eating and planting garlic and onion sets whilst the soil is still warm. This time of year is really about tidying, pruning, emptying pots, composting and mulching.

I don't know about you guys / girls out there but this is the time of year when I lose a little interest in the garden....I've had all the joy of planning, sowing, planting and then watching it all grow, to then harvesting, showing and eating. Now is the time to retreat into the warmth with a hot toddy in front of a fire and the telly...!



No, No, No says the wife...get out there and put the garden to bed for the winter and preparation for next spring – so out I go....!

So the first thing is harvest the last of the summer crops...Tomatoes, peppers, chillies, rhubarb, apples, cauliflowers which we eat, freeze, make jam etc. The exhausted plants grown in pots in the greenhouse I throw on the compost, whilst throwing the earth from the pots onto my borders and beds. Whilst there is little nutrient left in the soil it will help condition and break down the heavy clay soil I have. I leave my carrots, parsnips, swede, brussels in the ground or barrels through the winter (some people pick and store carrots in sand ..I don't). Next, we have tidying jobs - rake up leaves and compost them along with all shrubs and plants that are finished. Cut the lawn if you have one, hopefully for the last time, and add newspaper or cardboard (which you wet) to the compost. Add fruit and any other plant matter to the compost and chicken manure if you have any. Turn the lot once a month if you can for wonderful results next year.

Next we dig over borders, raised beds and prune back shrubs, roses, plants that need it (do not prune plum, cherry or big stone fruit trees as it is too late and you risk infecting them with winter born silver leaf disease). Clear all rhubarb stems and mulch crowns heavily...cut heavily...cut back asparagus ferns and mulch similarly.

Put grease bands on all fruit trees now or you will be at the mercy of the wingless winter moth which crawls up the stem from November to lay its eggs. You can even buy grease in tins and apply with a brush...just do it peoples.

Lift pots onto feet if you haven't already to help with air flow and avoid water logging. Store any of your favourite pots if they have nothing in them. If there are frost tender plants in them the very least you should do is fleece them or put in a protected area.

Dig up your tubers of lilies, dahlias and amaryllis, gladioli etc and once dried off for a few days keep snug wrapped loosely in newspaper in a frost free but cool environment like a shed. Well that's what I do.

Dry herbs (sage, marjoram, thyme, bergamot, oregano) for use through the winter...you should see my kitchen with all the garlic, shallots, onions and herbs hanging from the cupboards.

Now for next season you can take hardwood cuttings (red and black currants, gooseberries etc plus laburnums or geraniums, roses). The cuttings should be about 20cm long, planted in a trench in a sheltered, composted and free draining position. Simply dip each end in hormone rooting powder and plant about 20cm apart. Roots may take 9 months to really develop.

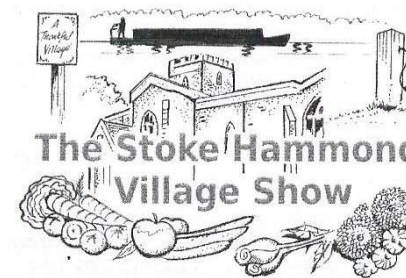
Lastly, we can sow now for next year. Broad beans, garlic and onion sets need to go in the ground now. In fact garlic and onion sets can be grown in big buckets too. Great to see the shoots pop up through the surface over the winter and then romp away in spring...great for kids because they see it growing in spring and don't have to wait till the end of summer for results! Google any of these thoughts for better info online.

Now for that seat in front of the fire....

Pagey



PAGEY'S SOW & GROW "PATCH"
is produced in collaboration with the
Stoke Hammond Village Show



www.stokehammondvillageshow.com



Whether you are looking for short or long term accommodation The Orchard Hotel has so much to offer. This old family home has been sympathetically and tastefully converted and now provides accommodation and assisted living for retired gentfolk.

There are five single and two double fully serviced guest rooms, each with:

- En-suite facilities
- Personal colour TV
- Drinks making amenities
- Courtesy tea and coffee
- Fridge, freezer and microwave
- Personal laundry service, if required

Residents are invited to make full use of the guest lounge and sun room as well as the indoor and outdoor swimming pools and the beautifully and lovingly tended gardens.

The majority of guests at The Orchard choose to be self sufficient and prepare their own meals or eat at nearby pubs and restaurants. However, hotel staff are happy to cater for guests providing this is arranged in advance.

The Orchard is fully accessible for anyone with limited mobility. It is regretted however that pets cannot be accommodated.

For more information please contact:

The Orchard Private Hotel, Stewkley, Buckinghamshire LU7 0HR
Tel: 01525 240 240 Fax: 01525 240 464
Email: orchardstewkley@supanet.com

Buttons Pre-School

- | | |
|-----------------------|-------------------|
| * Abbeys, Bletchley | * Brooklands Farm |
| * Chepstow, Bletchley | * Newton Leys |
| * Stoke Hammond | * Lakes Estate |
| * Wolverton | * Giffard Park |

15 and 30 hours funded sessions for 2-4 year olds,
private sessions also available.

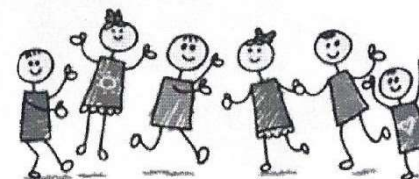
Sites across Milton Keynes and Bucks, flexible hours
including breakfast club, afterschool club and
wrap around care.

Contact us for details of your nearest pre-school.

Tel: (01525) 270501 / 07528051557

Email: enquiries@buttonspreschools.co.uk

www.buttonspreschools.co.uk



Leighton Plumbing & Heating

11 Woodman Close
Leighton Buzzard
Bedfordshire
LU7 3NU



Oil Boiler

Servicing, Repairs and Installation

All other aspects of Plumbing and Heating undertaken.

Please see our reviews and pricing on the boiler juice / myboilerservice website.

T: 01525 385250

M: 07774 567472

Oftec registered and Insured

Leighton-plumbing@ntlworld.com

Stoke Hammond local Store

Under new management, the local shop has been refurbished and re-opened on 1st January 2011. It is currently known as "Stoke Hammond Food and Wine".



Opening hours are: Mon-Sat: 6am till 10pm

Sun: 7am till 10pm

Our products:

News & magazines	Beers, Wines & Sprits	Pet food
Confectionary & snacks	Soft Drinks	Health & Beauty products
Bread (inc. Turney's) & cakes	Tobacco & Cigarettes	Frozen food & Ice creams
Dairy products	Groceries	Greeting cards
Medicines	Baby food & other products	Household Sundries
Sandwiches & ready meals	Fruit & Vegetable	Stationary items

Other services:

- Paper delivery available for local residents (delivery charge is 25p per day).
- Negotiation is underway to re-open the post office as "Post Office Local"
- Pay-point/Top up services will be available.
- Cash machine will be available.
- Photocopier & passport photos will also be available.
- Pies and coffee will be introduced in the morning.

Exclusive Promotions:

Wines from £2.99	Beers from 6 for £5.50 (500ml cans)
-------------------------	---

Strong beers are from **£1.09** (500ml cans)

THE ULTIMATE
DANCE-FITNESS
PARTY THAT
WILL GROOVE
YOU INTO SHAPE!

**GET DOWN
FEEL GREAT**

with Nikki G

Zumba
Instructor
Network

Zumba
Mondays 7.30pm - 8.30am

Brooklands Middle School, Brooklands Drive,
Leighton Buzzard, Beds LU7 3PF

Wednesdays 9.45am - 10.30am

All About Me Fitness Leighton Buzzard

Zumba Gold
For the older active adult

Mondays 10am - 10.45am

All About Me Fitness Leighton Buzzard

Thursdays 10am - 10.45am

Southcott Community Centre,
Grasmere Way, Linslade LU7 2PJ

Please wear comfortable clothes and bring water!
No need to book - just turn up!

Contact your local licensed Zumba instructor

Nikki Gladdish 07974 141874

Email: nikki@wizfit.co.uk

Nikki G Zumba www.nikkigladish.zumba.com



FORCES
SSAFA *Help*

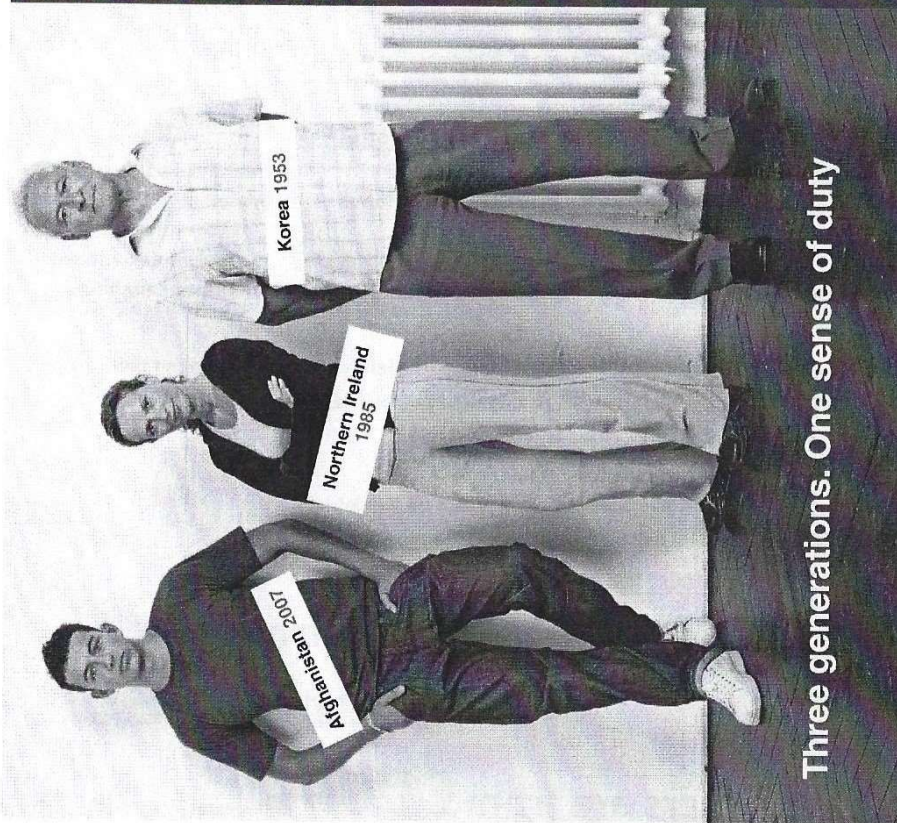
Service man or woman? Now or in the past? Member of Service family?

Do you need help – practical? financial? emotional?

Please call us (in confidence)
SSAFA Bucks:
01296 744530 (24 hrs)

www.ssaifa.org.uk

Registered Charity No. 210760. Est. 1945. Registered Charity (Scotland) No.



HIGH ASH SCHOOL – NOVEMBER 2017



Headteacher:
Mrs. Sara Boyce

High Ash C of E Primary School
Pound Hill,
Great Brickhill
Milton Keynes
MK17 9AS.

Tel: 01525 261620
Fax: 01525 261988

E-Mail: office@highash.bucks.sch.uk
Website: www.highashcofe.lk.org



It has been a very busy half term at High Ash CE School and the children have settled well into their new classes! The whole school took part in our Harvest Festival service at Church and it was a wonderful sight to see the whole school walking so well through the village.

Our choir are busy rehearsing for 'Young Voices' in Birmingham and we are already planning ahead to the Christmas Nativity as well. We are very much looking forward to performing our 'Good Companions Concert' which is at 1:30pm on Wednesday 13th December in our school hall. If any Good Companions would like to come, please call the office on 01525 261620 or email office@highash.bucks.sch.uk to reserve your seats.

Many thanks to our parent and parish council volunteers for their continued support with the 'Walking Bus' helping to ease parking around school. We are working closely with the community to ensure visitors to school respect residents when parking.

Diary Dates: -

Tuesday 17th Oct – Parents Evening 3.30-6.00pm

Thursday 19th Oct – Parents Evening 5.00-7.30pm

Friday 10th Nov – Class Worship for parents 2.45pm

Wednesday 15th Nov – Open Learning Morning & coffee parents 9.00-10.00am

Friday 24th Nov – Celebration Worship for parents



Exquisite  *Cleaning*
We take pride in your home

FOR ALL OF YOUR DOMESTIC CLEANING

YOUR LOCAL STEWKLEY BASED COMPANY

CHOOSE FROM WEEKLY OR FORTNIGHTLY

FULLY INSURED

ALL STAFF POLICE CHECKED

ALL CLEANING MATERIALS PROVIDED

CONTACT **CHRIS STEVENITT** FOR MORE INFORMATION ON:

OFFICE: **01525-242042** OR MOBILE: **07850-540393**

EMAIL: chris@exquisitecleaning.co.uk

WWW.exquisitecleaning.co.uk

Stoke Hammond



a thankful village

EARN SOME EXTRA CASH Stoke Hammond Parish Council is recruiting new members for its successful Green Team

ENTHUSIASTIC AND RELIABLE PEOPLE AGED OVER 16 NEEDED TO WORK IN THE VILLAGE

- GRASS CUTTING
- WEEDING
- CLEANING SIGNS & BUS SHELTERS
- TRIMMING & STRIMMING VERGES
- CLEARING WEEDS FROM PAVEMENTS
- EQUIPMENT & TRAINING PROVIDED
- £8.00 PER HOUR · STARTING MID-FEB 2018

**TO APPLY PLEASE CALL 01296 336575 OR
EMAIL clerk.stokehammondpc@gmail.com**

K J WINDOWS & DOORS

UPVC WINDOWS DOORS & CONSERVATORIES
FASCIA SOFFITS & GUTTERING



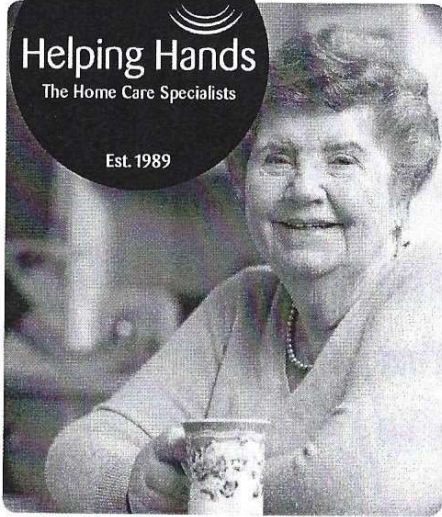
Keith Jones

07539367200

Helping Hands

The Home Care Specialists

Est. 1989



Do you need a Helping Hand?

If you are looking for an **alternative to residential care** or extra support for those everyday tasks that are becoming difficult for you or a loved one – then we're here to help - **from 30 minutes per week to Live-in Care.**

Our **Stoke Hammond care team** has been providing award winning quality homecare since 1989 and can help with: personal care, housekeeping, help getting around or even to provide a break to an existing family member or care-giver.



To find out how we can help you,
call: 01280 428 237 or
visit: www.helpinghands.co.uk

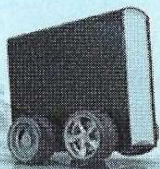
AB WINDOW
CLEANING

A reliable and professional service...

For a free quotation please call Andrew:

Office: 01525 234120

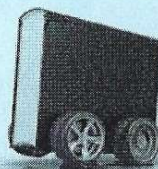
Mobile: 07807 973871



MOBILE LIBRARY

**Tuesday 31st October
10.15 - 10.45**

Village Green Use it or Lose it!



ORGANISATIONS THAT USE THE COMMUNITY CENTRE

Women's Institute

19.30 - 21.30pm

Contact: Joan Simmons 01525 270432

High Ash Scouts, Cubs, Beavers

Every Thursday 17.30 - 21.30pm

Contact: John Till 01525 261444

Pilates - Group Matwork

Monday's 09.25am, 10.30am,

19.10pm, 20.15pm

Contact: Louisa Harris 07941 203589

Metafit

Tuesday 9.30am and 10.00am

Wednesday 7.30pm

Friday 9.30am and 10.00am

Contact: Lizzy 07753 138276

Buttons Pre-School

Monday - Friday

Contact: 01525 270501

To Hire the Hall please telephone 01525 270501

or e-mail: shcommunitycentre@gmail.com

SH NEWS - ADVERTISING RATES

For 12 editions: FULL Page - **£85.00** HALF Page - **£50.00** QUARTER Page - **£30.00**

USEFUL TELEPHONE NUMBERS

Bucks County Council	01296-395000
Community Transport Co-ordinator	07729-699488
Registrar (<i>Births, Deaths & Marriages</i>)	01296-382581
Aylesbury Vale District Council	01296-585858
Gypsy Hotline	01296-383774
Litter Enforcement Officer	01296-585395
Social Care Services (<i>Emergency Duty</i>)	01494-817750
MK General Hospital	01908-660033
Stoke Mandeville Hospital	01296-315000
Luton & Dunstable Hospital	01582-491122
Clerk to the Parish Council	07743-355484
Parish Council Chairman (<i>Greg Noble</i>)	01525-270744
County Councillor (<i>Janet Blake</i>)	01525-261288
District Councillor (<i>Neil Blake</i>)	01525-261288
High Ash School	01525-261620
M.P. (<i>John Bercow</i>)	020-7219-6346

Police non-emergency number 101

EDITORS NOTE

Barbara Munn who came up with the 'Spotlight On' concept must have walked under one too many ladders and crossed paths with more than a few black cats, for no sooner had Barbara recovered from her recent fall, Barbara then went and tripped in a Marks & Spencer's store and now has a broken wrist. We wish you Barbara a speedy recovery and likewise to village stalwart Hazel Turner, who as you will read elsewhere is recuperating following major eye surgery.

Despite the injury, Barbara still managed to put together another 'Spotlight On' for this month - I hope you enjoy knowing more about Alison Sheehan..

A reminder to those of you who wish to attend this year's Senior Citizens Xmas Lunch organised by the SH Community Association, please remember to reserve you place - See the advert in this edition for details.

Again, as always, please do get in touch if you have an idea for something you'd like to see in the SH News. We want the SH News to be informative and interesting as well as being a means for local businesses to advertise their services.

May I please have copy for the November issue by **20th November**

Greg Noble, Oak Farm, Bragenham Side, Stoke Hammond. MK17 9DB
01525-270744 E-mail: gregnoble1980@aol.com

VILLAGE DIARY

Tuesday 7 th November	Parish Council Meeting – Community Centre - 19.30
Saturday 11 th November	Community Breakfast – Community Centre - 8.30 - 10.30
Saturday 18 th November	Christmas Bazaar - Methodist Church - 14.30
Saturday 25 th November	Christmas Fayre - Community Centre - 13.00 - 17.00
Saturday 2 nd December	Senior Citizens Christmas Lunch – Community Centre
Tuesday 5 th December	Parish Council Meeting – Community Centre - 19.30
Friday 8 th December	Gardening Club Christmas Dinner – Community Centre
Saturday 9 th December	Community Breakfast – Community Centre - 8.30 - 10.30
Tuesday 2 nd January	Parish Council Meeting – Community Centre - 19.30