

# SH & NLS NEWS

**Stoke Hammond & Newton Leys South**

INSIDE THIS EDITION:  
NEWS FROM NEWTON LEYS SOUTH  
PARISH COUNCIL NEWS  
THE BOOK CLUB  
CHURCH NEWS  
MAVIS'S QUIZ  
GOM & MUCH MORE

**October - November 2024**

**[www.stokehammondpc.com](http://www.stokehammondpc.com)**



The decorated interior of St Luke's Church for a wedding in July

*'Every Dream Starts With A Plan'*



## SERVICES WE OFFER:



Measured Surveys



Draughting / Sketches



Permitted Development



Planning Applications



Building Regulation Drawings

## FOLLOW US ON:



## ABOUT US

We provide an architectural service predominantly on residential projects and some small commercial projects for extensions, alterations and new builds. We tackle anything from a simple new entrance porch, new garage up to new build developments and bespoke new houses. We also have experience of working in conservation areas and listed buildings.

**Contact Us and Get Your Free, Detailed Quote Today!**



2nd Floor, 181 Queensway, Bletchley, Milton Keynes, MK2 2DZ



[www.vjsprojects.co.uk](http://www.vjsprojects.co.uk)



[info@vjsprojects.co.uk](mailto:info@vjsprojects.co.uk)



01908 771285

**Use Code 'VJS10'  
For 10% Off**





# Senior Citizens Christmas Lunch



*At the Community Centre from 13.00 on Saturday 7th December*

**To reserve your place, if you have not  
already done so at this years Afternoon  
Tea event, then please call Ann on  
01525 270151 or Greg on 07729 691888**

**Alternatively email**

**[enquiries@shcommunityassociation.co.uk](mailto:enquiries@shcommunityassociation.co.uk)**



**Please advise of any special dietary nees or if transport required**

*Funded by the Community Association and your Parish Council*

# Brickhills and Stoke Hammond Churches

## Everyday Faith, Everyday Prayer

Dear friends,

*One of the great gifts that we have is our freedom to pray. We are not restricted to praying only in church, or at particular times, or only with special words. We can pray where we want, and when we want, and with whatever words may help us to express our thoughts and feelings to God.*

*But some guidance and support can be helpful, and there are many ways that we can find it. Recently, I have been trying some smartphone apps that can guide us in prayer, and I have found them more helpful than I had expected.*

*Recently the Church of England has produced a new app called 'Everyday Faith', which offers for each day a Bible passage with a brief reflection and prayer, which can be read or listened to in about five minutes. It should be easy to find wherever you get phone apps from, if you search for 'Everyday Faith'.*

*It is just one of the many ways that we can be guided and encouraged to use this great gift of prayer that God has entrusted to us.*

Rev'd John Waller

## ST LUKE'S STOKE HAMMOND CHURCH SERVICE DATES TO NOVEMBER 2024

### OCTOBER

6th Oct: 09.30am Café Church - DW

13th Oct: 11.00am Benefice Holy Communion - AGE

**Note:** *To be held at St Mary the Virgin, Great Brickhill  
Celebrating the completion of roof repairs - with  
refreshments afterwards*

20th Oct: 09.30am St Luke's Day Celebration - tba

27th Oct: 09.30am\* Holy Communion - JW



**AGE – Archdeacon**

**Guy Elsmore**

**JW – Rev John Waller**

**DW – David Webber**

### NOVEMBER

3rd Nov: 11.00am Family Service - tba

10th Nov: 10.45am Remembrance Day Service - tba

17th Nov: 10.00am Benefice Holy Communion - JW

**Note:** *To be held at All Saints, Bow Brickhill*

24th Nov: 09.30am Holy Communion – JW

*\* Note clocks go back 1hr at 2am on the 27th Oct*

*Refreshments unless  
otherwise stated are  
served after all  
services at St Luke's*

**Details and any late changes to church services are posted on the Benefice Website:  
[www.brickhillchurches.org.uk](http://www.brickhillchurches.org.uk)**



## PARISH COUNCIL NEWS

Some of you may have seen on social media or heard via the grapevine about the possible development of some 45 acres of land known as Chadwell Farm that sits directly to the south of Newton Leys by the Drayton Road. Whereby Richborough a



land promotion company have been retained to work with both the land owners and Kirkby Diamond who are managing the land transaction, in order to help secure planning for around 320 new homes, which would obviously be a substantial increase to the number of homes in our parish. Interestingly, when the Neighbourhood Plan Steering Group team approached local land owners

about sites that could possibly form part of the plan, no response was received from this particular land owner and as such this land did not form part of the Plan that is now with Buckinghamshire Council for their examination. We as your Parish Council are arranging to have a meeting with Richborough so that we can understand more about their plans, timescales and how they intend to interact and communicate with the local community. We are all very much aware of the governments aims to dramatically increase the number of new homes being built over the coming years which will no doubt influence any decisions made by the planners at Buckinghamshire Council if and when a planning application is submitted.

It is very disappointing that person/s unknown thought it would be fun to set alight one of the picnic benches at the recreation park on Bragenham Side. It would have been no easy task as these benches made from recycled plastic are not something that lights easily and it is obvious that an accelerant liquid was used. The resultant blaze was so fierce that it necessitated the fire brigade to be called out to extinguish the bench and the now on fire grass beneath. One knows that Stoke Hammond is not exclusive to this type of vandalism as neighbouring villages such as Soulbury, Stewkley and Wing have also suffered similar levels of wanton destruction of public amenities. The picnic bench will be replaced and whilst we are claiming against our insurance, after deduction of our policy excess and the fact the policy only covers the replacement of equipment and not installation, this is still going to mean an expenditure of some 300 to 400 pounds.



Now some relatively good news in that since the Canal and River Trust installed the new 'No Mooring' signs along the canal banks adjacent to the Stoke Road layby the number of moored boats has drastically reduced to almost nil which also means there has been a significant drop in the number cars which obviously belonged to the boat owners that are now parked in the layby. Likewise, the level of discarded waste or storage of items such as the stacks of wooden pallets seems to have followed a similar

vein. Obviously, it is early days and there are still a large number of motorhomes using the layby as a permanent residence but progress has definitely been made.

You may recall that in the last PC News we mentioned about the plans by Affinity Water to use the Grand Union Canal as a means to transfer treated water from a plant in the Midlands down to a new extraction facility to be located somewhere near Leighton Buzzard before being onward piped to their water customers via their Chaul End near Luton treatment centre. It was always the intention of Affinity Water to hold public consultations so that all communities that may well be impacted or lie within the proposed route could fully understand the concept and provide their feedback. That consultation period has now started and runs until the 25<sup>th</sup> October. This will include presentations at many regional venues, Full details of the dates and locations of these presentations can be found on the Grand Union Canal Transfer website which also gives one the opportunity to fill out a Feedback form [www.guctransfer.co.uk](http://www.guctransfer.co.uk)

The entrance gates to the village at the Leighton and Fenny Roads when first installed some years ago did look very resplendent but over time despite some occasional maintenance are now looking very tired and do not now really serve to tell people that you are now entering Stoke Hammond. These gates are also not now highway compliant unlike the bright white gates that were installed by Bucks Highways to our Newton Road entrance. It was therefore agreed at the August PC Meeting that we would go ahead with the installation of similar new white entrance gate signs to both the Leighton and Fenny Road. This was despite the fact that the final quotation from Bucks Highways to supply and instal the new gates was considerably more than their original estimate, but the PC felt that these entrance gates are prominent and important feature that will be in place for many years so it is a worthwhile expenditure. The order has now been placed but we await a date for their installation by the Highways team, which will no doubt involve some form of temporary traffic lights to provide safe working for their engineers.

Still on the subject of highways and more specifically our MVAS Mobile Vehicle Activated Signs the latest results of which can be found elsewhere in this edition of the SH & NLS News, in that the unit mounted at the Leighton Road entrance whilst recording data and speeds correctly, was seemingly flashing up the '30mph slow down' warning irrespective of what speed you were doing, even if infuriatingly you were observing and driving well below the speed limit. Well, those drivers will be pleased to know that an engineer has been out and fixed the problem, so if it does now show you the 'slow down' warning, it does mean you need to check your speed.

The PC normally has a Summer Break in August, but for various reasons, it was decided to have the break this year in September so since the last PC News there has been just one PC Meeting which was held on the evening of Tuesday 6<sup>th</sup> August, which was attended by 5 of your councillors and our clerk plus 8 members of the public. Aside from the normal matters such as signing off the previous meeting minutes and approving accounts and other financial matters the other main points if not already mentioned were as follows:

- *Under planning there were two applications for discussions with the first for Stoke House Farm being fairly straightforward to which your PC had no objections, but we were for the second time in a matter of months looking at another Certificate of Lawfulness application relating to the 33 homes to the land at the end of Brook Farm Close trying to prove once again (the previous certificate application having been refused) that work had actually*

*started on these 33 homes before the elapse of the 3 year period from the date upon which the original planning application had been granted. Your PC again Objected to this latest certificate. The full details of our objection to this application and our support for Stoke House Farm application can be found in the 'Planning Section' of this publication.*

- In the discussion to advise on the current situation with the Newton Leys Management Company and its possible adoption Cllr Champion had presented Cllrs with financial information prior to the meeting. The figures were a lot less than the PC had expected to receive for the adoption and Cllrs were still nervous over the situation with Firstport. It was resolved that before the PC agrees to adopt the area currently looked after by the Management company, that more information is required and more time is needed to resolve outstanding issues. Cllrs agreed they are 100% supportive of adopting the area, but it was felt they could not agree to it at this stage.*

- Still on the matter of adoptions and in this case the Taylor Wimpey land in Newton Leys South, our Clerk confirmed the boundary map had been agreed by Cllrs, but nothing else has taken place so far in relation to the adoption. Our solicitor is still waiting to hear from Taylor Wimpey's solicitor, so there is currently no timings available for when the adoption will go through.*

- Under the item to report on meetings attended on behalf of the PC we were advised that Cllr Champion, Cllr Venn and Cllr Sharkey had all recently attended a training course for parks inspections. Following this course, Cllrs went to see the park at the new development off Fenny Road and there are a number of issues that will need to be resolved before it is adopted by the 3 PC.*

Depending on when you're reading this article it may be too late to make the October meeting being held on the evening of Tuesday 1<sup>st</sup> October. The meeting at the Community Centre, Bragenham Side will start at 7.30pm but will be preceded by a Q&A session at 6.30pm with our new Buckingham and Bletchley MP Callum Anderson. As for November the PC meeting will be held on the evening of Tuesday 5<sup>th</sup> November starting at the usual time of 7.30pm but at a yet to be confirmed venue, as we may be heading off to the Newton Leys Pavilion for this meeting.

Finally, it is only correct that we make mention of the sad passing at the age of 92 of Mary Bonner a lifelong resident of Stoke Hammond. Mary with her late husband ran the village shop and post office for some 29 years and it was only two years ago that Mary did kindly accept our invitation on behalf of Stoke Hammond to carry out the planting of the new tree on the Village Green marking our celebration of the late Queen's Platinum Jubilee.

**Should you wish to contact your Parish Council, please do so via our clerk:**

Kelly Harris Tel: 07793 131810 Email: [clerk.stokehammondpc@gmail.com](mailto:clerk.stokehammondpc@gmail.com)

**[www.stokehammondpc.com](http://www.stokehammondpc.com)**

#### **YOUR PARISH COUNCILLORS EMAIL ADDRESSES.**

Cllr Mubasshir Ajaz (Chair) – [mubasshirajaz@stokehammondpc.com](mailto:mubasshirajaz@stokehammondpc.com)

Cllr Craig Champion – [craigchampion@stokehammondpc.com](mailto:craigchampion@stokehammondpc.com)

Cllr Fran Sharkey – [fransharkey@stokehammondpc.com](mailto:fransharkey@stokehammondpc.com)

Cllr Greg Noble – [gregnoble@stokehammondpc.com](mailto:gregnoble@stokehammondpc.com)

Cllr David Venn – [davidvenn@stokehammondpc.com](mailto:davidvenn@stokehammondpc.com)

Cllr Malcom Newing – [malcomnewing@stokehammondpc.com](mailto:malcomnewing@stokehammondpc.com)

Cllr Steven Julier – [stevenjulier@stokehammondpc.com](mailto:stevenjulier@stokehammondpc.com)

## YOUR GREAT BRICKHILL UNITARY WARD COUNCILLORS

**The Great Brickhill Ward includes the villages of: Drayton Parslow, Dunton, Great Brickhill, Hoggeston, Hogshaw, Mursley, Newton Longville, North Marston, Oving, Pitchcott, Quainton, Soulbury, Stewkley, Stoke Hammond & Swanbourne.**



**Phil Gomm**

It's been a privilege living and being part of the spirited multicultural Aylesbury Vale community all my life. People have always been my focus and as a DJ Presenter and owner of an events company, listening and delivering accurately has been key. Family is extremely important and it's been my pleasure to farm and breed horses with them. Recently, as a County Councillor, Chairman of Thames Valley Crimestoppers and Buckingham Neighbourhood Action Group I've gained a passion for advocating for the best for people which I endeavour to continue.

Email: [Philip.Gomm@buckinghamshire.gov.uk](mailto:Philip.Gomm@buckinghamshire.gov.uk) Mob: 07778 117647

**Jilly Jordan**

I am currently working as a Unitary Councillor in the Ivers. I have served on several committees, including planning (local and strategic) and finance, and I am Chairman of the local Community Board. We recently moved to live in the area. I am keen to use experience gained as a member of Buckinghamshire Council to the benefit of the local community. Clearly, we face many challenges, including those presented by major infrastructure projects. I look forward to getting to know members of the local communities and working together to maintain and improve the quality of life in our villages.

Email: [Jordan@buckinghamshire.gov.uk](mailto:Jordan@buckinghamshire.gov.uk) Mob: 07740 308468



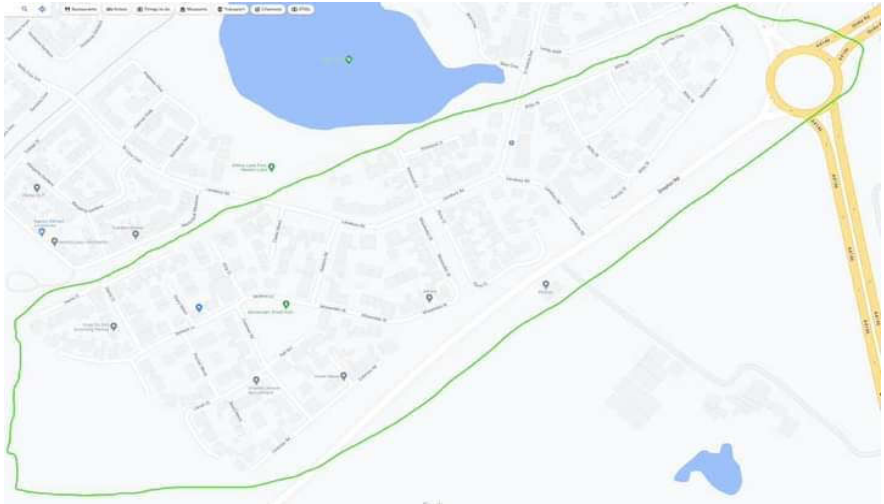
**Iain Macpherson**

Iain has spent the last 39 years in business, initially in international sales and marketing roles for multi-national companies travelling extensively, but more recently in medium sized businesses in the food sector in the Buckinghamshire and Oxfordshire area as Managing Director. He has always taken a keen interest in both national and local politics and has recently supported Greg Smith's campaign pre-election on the doorsteps. He's attended many fundraising events and local activities such as the anti-HS2 rallies. Iain is married to Angela, they have two mature children; Rosanna (31) and Angue (28)

Email: [Iain.Macpherson@buckinghamshire.gov.uk](mailto:Iain.Macpherson@buckinghamshire.gov.uk) Mob: Not Avail



## WELCOME TO THE NEWTON LEYS SOUTH SECTION



### **Table tennis table and picnic benches now installed**

After many delays we have eventually managed to have the outdoor table tennis table installed in the Dickens Lane park. We have distributed five pairs of bats and balls to residents who won a draw. We'll be really interested to see how much it is used as we would like to install more in the Parish if they were popular.

We have also installed two picnic benches, one in the park and the other at the top corner of the public open space. Hopefully, we will get some good weather so they can be used before winter sets in.

We are also in the process of installing a bench by Parrot Close.

Councillor Ajaz has been seeking views on the potential installation of outdoor gym equipment around Newton Leys.

### **Firstport update**

Almost everyone in the Bovis estate has now paid their final payment, and all the conditions have been satisfied for the adoption by the Parish council of the park at Dickens Lane and the public open space. There remain a few formalities to complete with Firstport, which has slightly delayed the formal adoption. Councillor Champion and the other director Kieron Duggan are continuing to operate the management company until adoption and pressing Firstport to conclude the last few actions it needs to take.

### **Lansbury Road**

Residents have finally got a complete road surface on Lansbury Road. We understand that Taylor Wimpey will be asking Milton Keynes Council to adopt the road shortly. That could take between two to three years from now, at that point the Bovis roads will be able to also adopted by Milton Keynes council.

*Cllrs Mubasshir Ajaz & Craig Champion*



# MD Autocare

## Vehicle Maintenance

Stoke Hammond's local Independent Garage.

Keeping the cars of Stoke Hammond & surrounding areas on the road since 2001

Available for:

Servicing & Repairs

Mots

Diagnostics

Air Conditioning

All Makes & Models

Fitting is free for all Bulbs, Blades & Batteries purchased from us  
(Standard fitment only)

You can find us up the single-track road, to the left of the Village Shop.

Mark & Jo

MD Autocare, The Workshop, Olde Bell Close  
Stoke Hammond, MK17 9BZ

Tel: 01525 270278

**Email:** [mdautocare@gmail.com](mailto:mdautocare@gmail.com)

**Facebook:** [www.facebook.com/MDAutocare](https://www.facebook.com/MDAutocare)

## MARY BONNER 1931 – 2024



### *Our Mum – Mary Bonner by Liz and Richard*

Mum was born on the 11<sup>th</sup> October 1931 in the university College Hospital London. Granma was having twins, but sadly Mum's sister Jean died at 6 weeks old. They came back to Stoke Hammond, where Mum lived all her life until two years ago when she broke her hip and had to move in with Rob and I.

Mum's brother Robert was born a few years later and they were always very close.

When Mum was about 6 years old, she caught whooping cough and was very ill and she was off school for a long time. She spent a lot of time recovering with Aunty Hilda and Uncle Tommy at their small holding in Stewkley and Aunty Hilda would come and fetch her on her bike from Stewkley.

Aunty Margaret taught her to play piano when she was about 7 years old. She started playing the Stoke Hammond Chapel organ when she was about 14. Mum and Aunty Margaret continued playing the organ at the chapel for the next 60 years.

At 14 she left school and went to work for her Aunty Lizzy and Uncle Bert in the family village shop.

Dad was injured during the war and after recovering he came back to work in the shop and took over the village rounds from Grandpa. Mum and Dad grew close and fell in love and they got married on the 7<sup>th</sup> June 1954.

They then took over the family business, with Mum being Post Mistress. Mum and Dad ran the village shop for the next 29 years.

When Dad retired, they moved to the bungalow at the top of the garden and my first husband and I took over the business.

I was born in 1959 and Richard in 1962 where we had a lovely childhood. If we had been naughty Dad always handed out the discipline, where as Mum was always the softer touch, he would send us to bed with no supper, but Mum would sneak up later

with milk and biscuits and say don't tell Dad.

We used to go on holiday each year to Great Yarmouth. Mum's treat each year would be to go the shows at the end of the piers. Her first task of the week would be to go to the booking office and book the tickets.

After the shows we would go to the stage door and wait outside with Mum's autograph book to collect any stars we could get to sign her book. She even chased after Ronnie Corbett who was walking with his wife down Great Yarmouth's seafront minding his own business just to get his signature.



## Foot Health Practitioners

serving Leighton Buzzard and surrounding areas

- Nail cutting and filing
- Hard skin
- Callus
- Corns
- Ingrowing Nails
- Thickened Nails
- Diabetic Foot Care
- Verrucae



**Routine Foot Care Appointment - £40**

Enhanced DBS Checked - Insured - Qualified

**For appointments or more information contact Jenny on:**



**01525 620089** or 07896 562646

[www.cravenhouseclinic.com](http://www.cravenhouseclinic.com)

The Foot Room, Suite 1, Craven House, Water Lane, Leighton Buzzard, LU7 1FA

## THE PLUMBER

Apprenticeship Served 1972 - 78

City and Guild Qualified

**ON CALL EVERYDAY**

Domestic and Commercial Installations,  
Maintenance and Repair Service.

- 💧 Burst/Leaking Pipes
- 💧 Blocked Sinks/Toilets
- 💧 Hot Water Tanks
- 💧 Overflows
- 💧 Showers
- 💧 Radiators and Pumps
- 💧 Garden Taps/Water Butts
- 💧 Fault Finding
- 💧 FREE WRITTEN QUOTE

**Call The Plumber Anytime**

**07970 317843**

**thep plumber@email.com**

*1<sup>st</sup> aid for your plumbing*



**YOU COULD ADVERTISE YOUR**

**COMPANY OR SERVICES**

**HERE FOR JUST £30 A YEAR**

**(6 BIMONTHLY EDITIONS)**

**IF YOU ARE INTERESTED THEN**

**PLEASE EMAIL:**

**[enquiries@shcommunityassociation.co.uk](mailto:enquiries@shcommunityassociation.co.uk)**



We used to love playing bingo at the Pleasure Beach, where we played most nights. We would save our winning tokens up all week to get a better prize and would cash them in on the Friday before we came home. We always had to come back on a Friday because Mum had to balance up the Post Office accounts.

As we got older and Richard got his motor bike she wouldn't sleep until she knew he was safely home.



Mum and Dad used to love their coaching holidays, they went all over Britain. They particularly loved going to Scotland.

She loved her garden and liked going on the Gardening Club trips.

Mum used to love walking, with or without the numerous dogs we had. She would often walk down the canal to see Dad and Richard fishing.

She still loved her walks even up to the last 2 years when she couldn't get about very well, she would also walk around the village with her 3 wheeled walker chatting to everyone and anyone.

She was a founder member of the WI in Stoke Hammond and her name appears on the list of members in 1947. She was still attending when the WI celebrated its 70<sup>th</sup> Birthday Celebrations, the same year the late Queen and Prince Philip celebrated their 70<sup>th</sup> Wedding Anniversary.

She was also a member of the Women's Guild and was their secretary for a few years.

Mum always helped out in the background whether it was with the Chapel or WI. She loved going to coffee morning, meeting up with her friends and having a chat and gossip.

She was very proud and a bit nervous to be asked to plant a tree on The Green in Stoke Hammond for the late Queen's Platinum Jubilee Celebrations as she was the oldest person in the village.

Mum was a fantastic help to me after my first marriage broke up. Jim, Mark and I went to live with Mum and Dad in the bungalow until we could get our Council house and she used to look after them for me so I could go back to work.

Richard, Yvonne, Lee and Terri used to come over every Sunday for tea and cake and she really looked forward to this.

She loved all her Grandchildren very much and was so proud of all of them. Then the Great Grandchildren came along and she loved them just as much.

She was a wonderful Mum, Grandma and Great Grandma.

# Are you looking for a reliable domestic cleaner?



- Extra Help Milton Keynes offer weekly or fortnightly domestic cleans
- Appointments are allocated on the same day/time with the same cleaner as far as possible for consistency
- All our Helpers are DBS checked and are interviewed and referenced by us

**Rates from £18.50 per hour**



Call Alexandra Willingale on  
**Tel: 07533 010482**  
[www.extra-help.co.uk](http://www.extra-help.co.uk)

## MAVIS'S QUIZ

In case you missed them, here are the answers to the last quiz where you had to identify the British Palaces or Castles from the photographs and 4 possible suggestions for each:

1/ Leeds Castle 2/ Hampton Court Palace  
3/ Balmoral Castle 4/ Buckingham Palace  
5/ Edinburgh Castle 6/ Lambeth Palace 7/ Warwick Castle 8/ Blenheim Palace 9/ Warwick Castle 10/ Kensington Palace



*This time, are you up to speed on your knowledge of prehistoric or now extinct animals. Can you identify the animals from the pictures. To assist we have given you the first letter of the animal's name.*



1/ T \_ \_ \_ \_ \_ R \_ \_



3/ S \_ \_ \_ \_ T \_ \_ \_ \_ T \_ \_ \_



2/ M \_ \_ \_ \_



4/ V \_ \_ \_ \_ \_



# Woburn Heating

**Worcester Bosch Specialist**

(12 years manufacturers guarantee offered)

Gas (domestic & commercial)  
installation, service & repairs

Oil boiler & tank installation, service & repairs

LPG residential & park homes  
installation, service & repairs

Underfloor heating specialist

System power flushing

**Office: 01234 910319**

**Email: [info@woburnheating.co.uk](mailto:info@woburnheating.co.uk)**

**[www.woburnheating.co.uk](http://www.woburnheating.co.uk)**



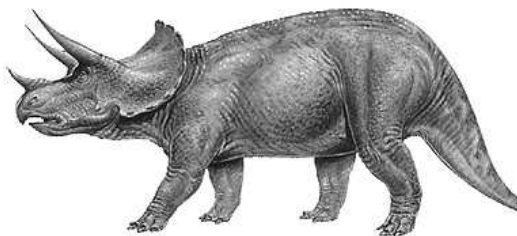
**BOSCH**







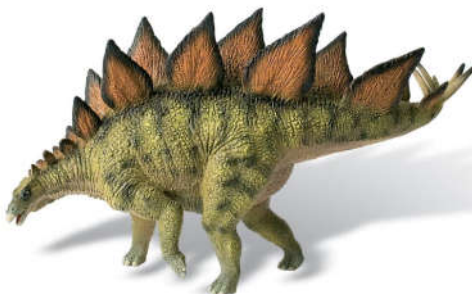
5/ D \_ \_ \_



6/ T \_ \_ \_ \_ \_



7/ G \_ \_ \_ A \_ \_



8/ S \_ \_ \_ \_ \_



10/ B \_ \_ \_ \_ \_



9/ T \_ \_ \_ \_ T \_ \_ \_

*Best of luck, but to save you having to wait till the next edition, answers can be found at the end of this months 'Grumpy Old Man' feature.*

# Linslade

Plumbing and Heating

A local, customer focused and family run business that has been catering for the plumbing needs of Bedfordshire and beyond for 27 years.

We provide an extensive product range of plumbing and heating supplies for both trade and retail customers at highly competitive prices.

Come and visit our two dedicated showrooms which showcase the latest in bathroom and heating design.



10 New Road, Leighton Buzzard  
Bedfordshire, LU7 2LX



[www.linsladeplumbing.com](http://www.linsladeplumbing.com)



01525 851870



[info@linsladeplumbing.com](mailto:info@linsladeplumbing.com)



# STOKE HAMMOND GARDENING CLUB



**Our Club's trip to Waterperry Gardens in Oxfordshire was arranged for 5th Sept and we had a great 'take up' from members. However, the weather forecast became more and more gloomy and could have been a bit 'off putting' ! As we all gathered on the green the skies were leaden accompanied by drizzle.**

**But, as usual, everyone were trying to stay cheerful and positive and off we went. On arrival at Waterperry , although dismal , the rain had stopped and - guess what - it didn't return until 4pm when we were ready to board the coach for the return journey! So lucky !!**



**Originally Waterperry was a horticultural school for ladies in 1932 but has now become 20 acres of beautifully landscaped gardens plus**



**much more. The gardens were really delightful with wide herbaceous borders filled with colour provided by a variety of asters and many perennials all grown on site. Between the borders were lovely wide walkways beautifully mown and amazing sculptures dotted around all over. There was a rose garden, a gravel garden, orchard and river walk all looking great even though autumn is well on its way and the dahlia border was spectacular with every colour and variety in full bloom. The Saxon church was interesting and the museum of rural life very popular plus a plant centre and different themed shops. As ever, the cafe/restaurant was a great meeting-up point and the scones and jacket potatoes were a particular hit.**

**I think it was the nicest garden I have visited (and I have visited a few !) - naturally some sunshine would have enhanced everything but even without that luxury it seems that everyone had a very enjoyable day.**

**Members should now watch out for the next 'email' sometime next month.**

# We want to hear from you...

Help us identify priority walking, cycling and wheeling improvements in Buckinghamshire.

We have developed a Local Cycling and Walking Infrastructure Plan (LCWIP).



This LCWIP suggests a future network of new and improved connections for walking, cycling and wheeling between towns and villages across Buckinghamshire. The LCWIP will help us to seek funding and will set a long-term policy approach.



Find out more at: [buckinghamshire.gov.uk/LCWIP](https://www.buckinghamshire.gov.uk/LCWIP)



**Buckinghamshire  
Council**



## Buckinghamshire Local Cycling and Walking Infrastructure Plan

We want to hear your views on our draft Local Cycling and Walking Infrastructure Plan (LCWIP) for Buckinghamshire.

Let us know if the right priorities are included and if there are other connections that should be considered.

The aims of the Buckinghamshire LCWIP are:

- develop a future network plan for walking, wheeling, and cycling
- identify priority locations for new or improved connections between towns and villages, shown as early concept 'corridors,' that will be investigated further
- provide opportunities for residents and visitors to make more journeys by walking, cycling or wheeling



The LCWIP proposals will help to deliver positive outcomes for Buckinghamshire, including:

- improving the attractiveness of walking, cycling and wheeling
- giving people alternative options for travel other than by car
- responding to climate change and tackling emissions
- promoting health and wellbeing and access for all
- accommodating future growth
- supporting local economies

Please visit [buckinghamshire.gov.uk/LCWIP](https://www.buckinghamshire.gov.uk/LCWIP)  
or scan the QR code for more information.





# Buttons Pre-School

- Abbeyes, Bletchley
- Blakesley
- Brooklands Farm
- Giffard Park
- Great Linford
- Newton Leys
- Springfield
- Stacey Bushes
- Stewkley
- Stoke Hammond
- Stony Stratford
- Wavendon Gate

All government funding accepted, including 2 year old and 30 hours. Private sessions also available. We offer places to children aged 18 months and over.

Outstanding settings across Milton Keynes, Buckinghamshire and Northamptonshire. Flexible hours including breakfast /afterschool club and wrap around care. Forest School locations and holiday club.. Contact us for details of your nearest pre-school

**Tel: 01908 533404 / 07973 158368**

Email: [enquiries@buttonspreschools.co.uk](mailto:enquiries@buttonspreschools.co.uk)  
[www.buttonspreschools.co.uk](http://www.buttonspreschools.co.uk)





## LADIES THAT LUNCH

Ladies that Lunch in October will be on TUESDAY 8<sup>th</sup> at 12.30 in the Sports Club, Bragenham Side. Cost will remain the same £3. For those new to the village, soup, rolls, cakes and tea and coffee are served. The event concludes at 1.45pm.

In November the Lunch will take place in the same venue and at the same time on TUESDAY 12<sup>th</sup>.

The Dolphin appears to be booked up already for the Christmas lunch date so if, Ladies, you wish to have a celebratory lunch there we may have to have a discussion about other dates that may be available, or wait until January when there aren't so many lunches booked. Let us know what you think. There is spare money for a deposit.

Hazel & Jenny

Hazel Turner 01525 270404 [hmt404@hotmail.co.uk](mailto:hmt404@hotmail.co.uk)

## PICTURE FRAMING

by

## COUNTRY FRAME



EST 1984

### *The Complete Picture Framing Service*

Expert advice and framing on:

Prints, Posters Water-Colours, Oil Paintings, 3D objects and all types of needlework

A huge range of mouldings to suit everything  
and over 100 different colours of quality mounting boards

Contact: **Paul Body**

10 Fishweir, off Chapel Square, Stewkley, Leighton Buzzard, LU7 0HB

[www.countryframe.co.uk](http://www.countryframe.co.uk)

T: 01525 • 240163 M: 07771 • 508805



**Charlotte Lyons  
Physiotherapy**

**Leighton Buzzard  
Physiotherapy Clinic  
Open Monday to Saturday  
Expert Clinical Care**

**Providing Treatment for Muscle, Joint and  
Nerve Injuries, Dizziness, Sports Rehabilitation  
and Pre & Post-Op Rehabilitation**

**Book an appointment at:  
Craven House  
Water Lane, Leighton Buzzard  
LU7 1FA**

**[www.charlottelyonsphysiotherapy.com](http://www.charlottelyonsphysiotherapy.com)**

**[charlottelyonsphysio@gmail.com](mailto:charlottelyonsphysio@gmail.com)**

**07446 765945**

## Stoke Hammond and Newton Leys South Neighbourhood Plan Update

*The Neighbourhood Plan has been submitted to Bucks Council and we await their implementation of the next stage in the process. This should be the commencement of the Regulation 16 consultation that will last a further 6 weeks. Bucks Council will publicise this through their normal channels and I will personally notify all those residents who responded to our Reg 14 Consultation earlier in the year.*

*If anyone is in any doubt of the importance of the Neighbourhood Plan you only need to take note of the announcements made by the new Labour government since May. On 8 July the Chancellor of the Exchequer, Rachel Reeves, announced that the government would reform the National Planning Policy Framework (NPPF) and consult on a new growth focussed approach to the planning system, including restoring mandatory housing targets, the consultation to complete before the end of September 2024.*

*I attended a briefing by Bucks Council on how the changes were likely to affect the Bucks Council area. The most significant change is the calculation used for assessing housing needs has been changed. The result is that between now and 2045 Bucks are looking at a 43% increase in the house numbers initially proposed in their draft Bucks Council Local Plan. This will inevitably have a significant impact on all parts of the Buckinghamshire Council area. The other major change in the NPPF proposals is the introduction of grey zones within Green Belt areas that provide other previously unavailable sites. This does not directly impact us as the Green Belt is all in South Bucks but does at least provide some hope that all the new growth is not in the North of the County.*

*As part of the NPPF changes being consulted upon the key elements supporting Neighbourhood Planning currently remain unchanged. This therefore provides weight to plans that have been agreed locally and have specific sites favoured for future development. As a consequence, if and when our NP is agreed it will provide a layer of protection against random development proposals close to the village boundaries outside those areas we have included in the plan. In addition, our plan unlike many others will come with a local design code, a favoured approach in the new NPPF, that will help protect the nature of development close to existing developments.*



## Ear Wax Removal

At Clearer Ears we specialise in earwax removal. Our Microsuction ear treatment provides a modern, quick and pain-free way to hear better again.

Our clinic is based in Linford Wood, Milton Keynes.

For those unable to attend clinic, we offer a home visit service.

We also provide bespoke custom made earplugs and earphones. These can be worn comfortably in a variety of different environments.

For more information or to book an appointment online visit:

[www.clearerears.com](http://www.clearerears.com)

Or alternatively give us a call on:

**0330 320 2225 or 07588 105060**



[www.facebook.com/clearerearsUK](https://www.facebook.com/clearerearsUK)



## Neighbourhood Plan Update Cont/d.

*As part of the NPPF changes being consulted upon the key elements supporting Neighbourhood Planning currently remain unchanged. This therefore provides weight to plans that have been agreed locally and have specific sites favoured for future development. As a consequence, if and when our NP is agreed it will provide a layer of protection against random development proposals close to the village boundaries outside those areas we have included in the plan. In addition, our plan unlike many others will come with a local design code, a favoured approach in the new NPPF, that will help protect the nature of development close to existing developments.*

*I hope the above will encourage positive responses from residents when the Reg 16 consultation takes place.*

*For those of you new to the village, the draft plan and associated documentation are all available on the Parish Council website.*

**Councillor Malcolm Newing**



## CHRISTMAS TREE FESTIVAL

7<sup>TH</sup> & 8<sup>TH</sup> DECEMBER

A couple of dates for your diary



Thank you so much to the Jackson family for the supply of a large tree and more Christmas decorations than I have seen in a long time! St Luke's will be full of decorated trees for the weekend of 7<sup>th</sup> and 8<sup>th</sup> December. The church will be open from 10.30am until 16.00 on Saturday and 10.30 am until 15.00 on Sunday. Refreshments will be available on both days. The theme this year is Village Life throughout the year. If you would like to take part and decorate a tree do let me know when you would be available week beginning 2<sup>nd</sup> December. All trees should be completed by 6<sup>th</sup> December at the latest, so cleaning can take place!

If anyone or company would like to sponsor a tree do, please contact me and let me know. Meanwhile I look forward to seeing the different creations.

Hazel Turner 01525 270404 or [hmt404@hotmail.co.uk](mailto:hmt404@hotmail.co.uk)



# High Ash Scout Group

Stoke Hammond

**Scouting – it's not just for kids!**

**Adult & Youth (13 & ½+) volunteers wanted**

Volunteering gives you the chance to try different activities, visit new places and learn and share skills, all whilst making a positive difference to the lives of young people.

There are plenty of ways you can help our Cub & Scout sections:

- work directly with young people
- support other volunteers
- provide specialist support, e.g. fundraising, training or media
- helping with events
- assist with administration and organisation

Whether you'd like to help out week-after-week or whenever-you-can, we provide training, learning opportunities and cups of tea

Why volunteer?

- make friends and meet people
- try new things and challenge yourself
- get outdoors and get stuck in
- Positively impact your community
- create vital opportunities for young people
- make memories that'll last a lifetime
- build your CV
- D of E volunteering section (age 13 & ½+)

Any enquiries to: [join.highthash@MKscouts.org](mailto:join.highthash@MKscouts.org)  
(we meet on Thursdays, in term time)

<https://www.scouts.org.uk/volunteer/volunteering-with-scouts/>

# Scouts

## High Ash Group



Hi everyone. Not much to report in this issue as we have only just started back up after the summer holidays. Both cubs and scouts have spent the last couple of weeks planning and training for a final weekend of hiking and camping before Autumn kicks in. We may have left it too late as the weather forecast doesn't look too good, but we will report back on our adventures in the next issue

Looking forward to the rest of this term, we have an active program of learning new skills, such as first aid for the cubs, as well as a variety of outdoor activities including the scouts annual day trip to London. Meanwhile please come and see us all at the village fireworks display where we will be running our usual fundraising stall.

**DAVE POLLINGTON**

Lead Volunteer – High Ash Scout Group

[dave.pollington@mkscouts.org](mailto:dave.pollington@mkscouts.org)

## Eaton Bray Dairy

**QUALITY MILK DELIVERY SERVICE**

*Direct to your doorstep!*

### **In Stoke Hammond and Surrounding Villages**

Eaton Bray Dairy deliver fresh milk and goods direct to your doorstep 3 days a week, 52 weeks a year by 8:00am

Quality groceries supplied by Pecks Farm Shop, Eggington and delivered with your milk.



**eatonbraydairy@gmail.com • [www.eatonbraydairy.co.uk](http://www.eatonbraydairy.co.uk)**  
**07308 300793 • Steve Boshell**

# Sell Your Home

With A Local Estate Agent



**EweMove**

SALES AND LETTINGS

Book Your FREE Home Valuation Today  
01525 300 010 | [EweMove.com](http://EweMove.com)



# PLANNING APPLICATION NEWS & UPDATES AUGUST & SEPT 2024



In this section you will find details of planning applications received, comments made by your Parish Council, and any updates on previous planning applications.

## NEW PLANNING APPLICATIONS:

### **24/01881/APP Stoke House Farm, Stoke Road, Stoke Hammond MK17 9BN**

Householder application for conversion of existing garage to habitable space  
*Cllrs resolved they had NO Objections to this application, with the caveat that this annexe is not to be used as a separate dwelling in the future. It was also noted that there were no comments at this time from neighbours and that the Canal & River Trust had apparently not been made aware of this application.*

**Note:** Planning permission was subsequently granted on the 14<sup>th</sup> August 4 with the following clause: The garage conversion to form an annexe hereby permitted shall not be used or occupied for any purposes other than as ancillary to the residential use of the property on the site, currently known as Stoke House Farm, Stoke Road, Stoke Hammond, Buckinghamshire, MK17 9BN. The annexe shall at no time be converted into or occupied as an independent dwelling or planning unit or rented out as overnight accommodation.

### **24/02068/CPE Brook Farm, Leighton Road, Stoke Hammond MK17 9DD**

Certificate of Lawfulness for existing use for confirmation development has been implemented on application 16/02432/AOP (Erection of 33 residential dwellings).  
*Basically, this was a further attempt with the previous application for a Certificate of Lawfulness having been refused to try and prove that work had been undertaken/started on the original approved application for 33 homes within the required 3 year period. Cllrs resolved to OBJECT to this application, citing the following reasons in their response to the planning authorities:*

*The Parish Council are aware that the key issues with this Lawful Planning Certificate application (24/02068/CPE Brook Farm, Leighton Road) are largely related to the legality of the process that has been undertaken with respect to application 19/03246/ADP. We would however like to reiterate the comments we made previously.*

- 1. Condition 9 associated with the application related to pre commencement of the development states: No development shall begin until a detailed service water drainage scheme for the site has been submitted and approved by the Local Planning Authority. It is a matter of fact that nothing was received by the council until January 2023. As such the activity supposedly starting the work on the 10th of August 2022 was not permitted.*
- 2. It is self-evident that arrival on site on the 10th of August 2022 was far from a planned commencement of work, it was a last-minute decision to try and meet the 3-year statutory period before the permission lapsed.*
- 3. It is apparent the owners had no intention of properly commencing this permitted development as no further site visits occurred and we have subsequently seen a separate and completely new application for 44 homes. This was refused by the North Area Planning Committee in March 2024.*





**I AM AN ARTIST LIVING IN STOKE HAMMOND.  
WOULD YOU LIKE TO LEARN TO PAINT IN  
WATERCOLOUR, PASTEL OR ACRYLICS?  
I AM CONSIDERING CLASSES TO BE HELD  
IN THE SPORTS CENTRE, TIMES TO BE  
ARRANGED AM/PM?  
SHOULD YOU BE INTERESTED  
CALL ME ON : 01525 279547  
MOBILE : 07565 899104  
E.MAIL : tebbutt.j@sky.com**

**f TEBBUTT PAINTINGS**



## Local Carpenter

- With many years of experience
- Good quality work
- Including doors, kitchens, fitted wardrobes and shelving
- Large or small jobs

You can contact James by phone or email:

Phone : 07970 750599

email : boynjbc@hotmail.com



**JBContractors**

JB Thomas - Proprietor

## LAPTOP & COMPUTER

Server, Printer, Apple, Setup,  
Repairs, Data recovery, Internet,  
Wireless, Network, Virus  
infection, Home/Office computer  
problems. Services from £40.

**Your local IT support, 7 days  
services, we visit you**

**No Fix - No Fee**

**Qualified, Experienced**

**PClaprepairs@gmail.com**

**01525 306316 – 07925 338435**

## NEED A HAIRCUT?



**GIVE LES A CALL**

**07723 300576**

**I'm a mobile  
Hairdresser working  
in and around  
Stoke Hammond**

4. Not only do we believe this application fails the statutory requirements as shown above, but we strongly believe the site owners have abused the planning process. Whilst the delay with the initial application may well have been impacted by the pandemic, the main delay was clearly due to the owners deciding they no longer supported the original application and wanted to prepare a brand-new application.

5. The impact of the delay is that the original application is now 1 year 9 months beyond the targeted date for commencement and approaching 5 years since the application was permitted.

6. The applicant comments on the failure of AVDC to meet their 5-year rolling quota but seems oblivious to the fact that the failure of developers to start work on time is a major contributor to this situation.

This development is well beyond the due start date and during this delay the world has moved on significantly particularly with respect to the importance of green space and recreational provision which has always been an issue with this part of the village and this site.

Our Neighbourhood Plan has now been submitted under REG 15 to Bucks Council. Whilst we recognise it only carries some weight until it is made, the shortfall of recreation land west of the Leighton Road, exacerbated by all stages of the Brook Farm development, is a real issue and is covered in the Green Spaces proposed policy. Given the landowners culpability for the delay and the failure to meet the pre commencement condition we respectfully suggest this application should be refused and the developers requested to provide an up to date and more appropriate application given the committee feedback on the latest submission.

#### **PLANNING UPDATES:**

No updates to report on this time

For further information/updates on these or other planning applications in our locality, please visit the following website selecting 'Aylesbury Vale' as the search area and then enter the application reference or use the map search facility:

<https://www.buckinghamshire.gov.uk/planning-and-building-control/view-and-comment-on-a-planning-application/>



## **REMEMBRANCE**



***Denise Draper from Stewkley will be supplying Poppy Boxes to the shop, sports club, The Dolphin, Buttons etc. Please do support this charity. Remembrance Sunday is 10<sup>th</sup> November and wreaths will be laid at St Luke's Church during the 10.45am service. All are welcome to attend.***



**Southlands Autocentre**  
Tyres - Exhausts - Maintenance

 **0333 358 0383**

Email: [info@southlandsautocentre.co.uk](mailto:info@southlandsautocentre.co.uk)

Web: [www.southlandsautocentre.co.uk](http://www.southlandsautocentre.co.uk)

**RAC**

Approved Garage

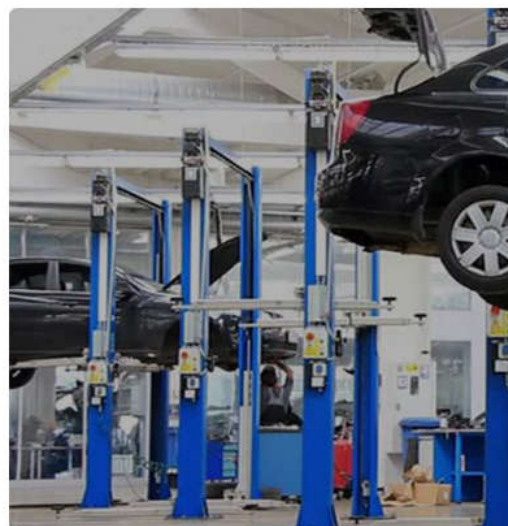


## MOT, SERVICING & TYRES IN STOKE HAMMOND

### PROVIDING STRAIGHTFORWARD QUALITY AUTOMOTIVE CARE

We invest in the latest technologies to provide a high-level of service for our customers in Stoke Hammond and surrounding areas. Our offering includes convenient hassle-free online bookings for MOTs, vehicle servicing and easy to use ordering system for tyres.

Our workshop located in Stoke Hammond is equipped with the latest tools and hi-tech equipment, so vehicles are maintained to exacting manufacturer standards. We believe in providing customers with cost-effective automotive solutions and complete service transparency.



**Southlands Autocentre**  
Unit 1 Southlands Farm  
Stoke Road  
Stoke Hammond  
MK17 9BN

## OUR SERVICES

**We provide our customers with a comprehensive range of automotive services to make sure vehicles are safe on the road.**

- MOT
- Servicing
- Repairs
- Clutch
- Tyres
- Coolant Change
- Exhausts
- Cambelts
- Brake Fluid Change
- Gearbox
- Accident Management
- Locking Wheel Nut Removal
- Air Conditioning
- Batteries
- Brakes & Pads
- Bulbs
- Suspension
- Vehicle Diagnostics
- Wiper Blades
- Body Repairs



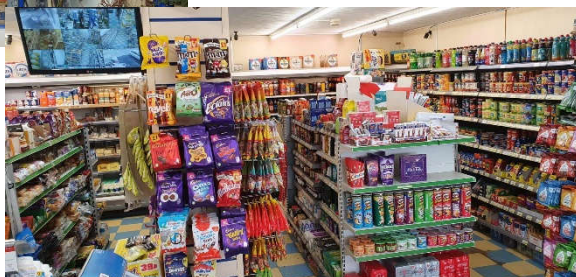
# STOKE HAMMOND LOCAL STORE & POST OFFICE



**Opening Hours:**

**Mon-Sat: 6.30am till 9.00pm**

**Sun: 8.00am till 9.00pm**



## Our Products:

**"A FRIENDLY WELCOME GUARANTEED"**

News & Magazines	Beers, Wines & Spirits	Pet Food
Confectionary & Snacks	Soft Drinks	Health & Beauty Products
Bread (inc. Turney's) & Cakes	Tobacco & Cigarettes	Frozen Food & Ice Creams
Dairy Products	Groceries	Greeting Cards
Medicines	Baby Food & other Products	Household Sundries
Sandwiches & Ready Meals	Fruit & Vegetables	Stationary Items

## Other Services:

- \* Pay-point/Top up services will be available.
- \* Cash machine will be available.
- \* Photocopying
- \* Pies & Coffee will be introduced in the morning.

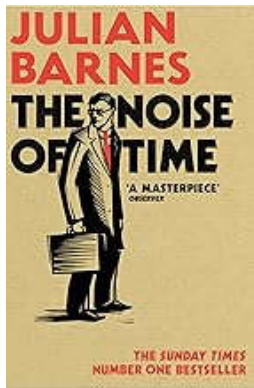




## STOKE HAMMOND BOOK CLUB



### The Noise of Time - by Julian Barnes



A historical novel based on research on the life of Dimitri Shostakovich - a Russian composer under the dictatorship of Stalin and then Khrushchev. He runs foul of powerful soviet leader Stalin particularly with his latest Opera. The author is British and the book is written in the third person. This talented man is forced to live his life in perpetual fear and frustration concluding that it is impossible to live in the Soviet Union and tell the truth. A Lifelong battle of one man's conscience and his art.

I was expecting the Group to think it was too serious and rather difficult to read however It had very mixed reviews. Some of the group loved it. They found it engaging, well written, interesting and were full of sympathy for Shostakovich. A difficult subject beautifully explored. It was said to be a good read adding that this author could make everything readable. Upset that Shostakovich spent his life in terror even though he was so talented. The author seemed to get inside the subject's head with great insight about how life was then (1936 period) and everyone was sad to read how he suffered when forced to join 'the Party'.

Others commented that it was a struggle to read and they simply did not like it, didn't enjoy it but found it interesting to learn facts eg. Stalin would not allow Shostakovich's music to be played in public for 20 years. However, in actual fact, several of the group were full of praise for the author and were going to look out for more of his books.

Conclusion: If you are interested in intense, informative reading as opposed to 'light' it is well worth a try.

# SUPPORTING OUR LOCAL AREA

To spread some cheer this year, Fine Homes Property has teamed up with the Brickhill Bistro to bring you some delicious treats.

If you are thinking of selling your home, book a free market appraisal with us and you will receive a golden ticket which entitles you to a selected afternoon tea or one of Kathyryn's delicious cakes.

As well as this, when we sell your home we will donate 5% of our commission to a project in your village or a charity of your choice.



## FINEHOMESPROPERTY

*Your personal realtor*

**Marcus Feinhols**

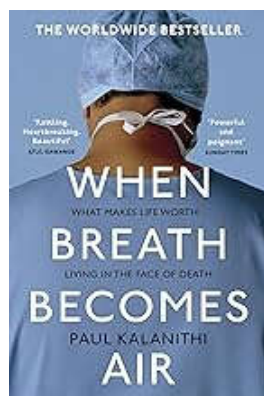
Marcus Feinhols MNAEA  
Managing Director

 01525 261100

 [marcus@finehomesproperty.co.uk](mailto:marcus@finehomesproperty.co.uk)

 [www.finehomesproperty.co.uk](http://www.finehomesproperty.co.uk)

## When Breath becomes Air - by Paul Kalanithi



This is a non-fiction autobiographical book written by American Neurosurgeon Paul Kalanithi. He was diagnosed with a terminal illness in his 30s and describes how he coped with continuing his demanding job and his ever-changing values, outlooks, opinions and reflections.

The Group were most complimentary about the book albeit from a variety of reasons. It was felt that Paul Kalanithi had to adjust from being the surgeon to the lower role as the patient but seemed determined to cope with the challenge. One interesting point was how being ill was seen from a doctor's viewpoint. It was thought that he was obsessed with his profession and was not really interested in others - i.e. not a very rounded person - but he was also described as compassionate. Despite these mixed comments there were many positive opinions and everyone enjoyed the book, found it interesting, thought provoking and heartbreaking and were impressed by his bravery in going ahead with having a baby. An unusual and informative book but felt by everyone to be well worth reading.

Conclusion: If you are looking for a meaningful read be aware of how everyone in the group enjoyed it and were pleased to have read it.

Next first book : Conversations with Friends - by Sally Rooney

**COFFEE MORNINGS  
AT THE  
SPORTS CLUB**

**Every Wednesday morning from 10am.**

**All welcome, pop along for a mingle and a chat  
with friends and neighbours whilst enjoying a cup  
of tea or coffee and a biscuit on the side**

**The Sports Club, Bragenham Side. MK17 9DB**





The Lindens is a privately owned care home, set in the tranquil Buckinghamshire countryside, offering individual care for our long-term residents and those visiting us for respite care. We provide a real 'home from home' experience for all our residents and their visitors.

- ▲ 24 hour expert Care delivered with compassion
- ▲ Well-appointed double & single en-suite rooms with care call systems, televisions, DVD players and internet facilities
- ▲ Meals prepared in house using locally sourced ingredients, catering for individual dietary needs
- ▲ Visitor's centre
- ▲ Tea room available for our residents

The Lindens Residential Care Home,  
Stoke Road, Stoke Hammond, Buckinghamshire, MK17 9BN

☎ info@careatthelindens.co.uk ☎ 01908 371705 🌐 www.careatthelindens.co.uk

 The Lindens Residential Care Home



# What's On?



## SEPTEMBER

8TH & 27TH

**WE ARE  
MACMILLAN.  
CANCER SUPPORT**

We are always proud to take part and support different charity fundraisers. In September we walked to raise money for Alzheimer's Society and later that month, held a coffee morning to raise money for Macmillan. Staff and residents all took part in baking tasty treats to be sold on the morning. We were also fortunate enough to have donations from local bakeries.



To arrange  
your visit or  
for further  
information  
and guidance  
when  
choosing a  
care home,  
please call us  
on  
01908 371705

*And Looking forward to more!*

# LUXURY NARROWBOAT HIRE

## ON THE GRAND UNION CANAL



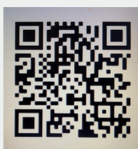
SEE BEDS, BUCKS & HERTS FROM A DIFFERENT PERSPECTIVE



## THE EPIC BOATING COMPANY

### NARROWBOAT 'KINGS LANDING'

Based in Stoke Hammond near Milton Keynes this stunning luxury 60ft narrow boat sleeps up to 6 people and is available to hire for holidays, weekends and mini-breaks throughout the year. Full tuition is given on how to steer, navigate and operate locks before each hire. Contact us for availability and prices or check out our website by scanning the code!



#### CONTACTS US

Phone: 07974 141874

Email: [admin@theepicboatingcompany.co.uk](mailto:admin@theepicboatingcompany.co.uk)

Website: [www.theepicboatingcompany.co.uk](http://www.theepicboatingcompany.co.uk)

### DETAILS



3 Double Beds



Living Area



Kitchen



1 Shower Room



2 x Wc's





# High Ash C of E School Parish Council Newsletter



*Grow Together Shine Forever*

*'Let your light shine' Matthew 5:16*

## September 2024

It's hard to believe we've reached the end of September already. Our new Reception class has settled in well and are all loving school.

We created a new outdoor space over the summer for our KS1 children and they've enjoyed having the opportunity to learn, as well as play, outdoors. The outdoor space has been made possible thanks to donations from individual parents and fundraising by HASA (our PTA). We are really grateful to everyone who has donated. We think it is going to be a great space for the children, supporting both their learning and their wellbeing.

At the other end of the school, our Year 6 have embarked on their week long residential in Shropshire - definitely a rite of passage. And HASA, our wonderful PTA, hosted an 'Inflatables Fun Day' on the 15<sup>th</sup> September. It was a great event, our families had a lovely, fun afternoon and thankfully the weather held. We've definitely packed a lot into our first month back at school!

September is always a busy a month in school. We have some great plans for our curriculum with exciting initiatives for writing and maths introduced to the children this term. Our Year 6 children are off on their week long residential in in early October. Its earlier than previous years but will be a great start to their final year at primary school and help them build the skills they need as they start to think about their transition secondary school. Year 4 started their swimming lessons in September and hosted a Macmillan Coffee 'Afternoon' at the end of the month. We'll also be launching our girl's football team this autumn, as well as the boy's team, thanks to sponsorship by two of our families. This is going to be an exciting year at High Ash!

Cont/d over....





**Eackcare**

## Pilates for Every Body!

**Pilates Specialist to help you move better and feel better!**

If you're feeling a bit broken and in need of some quality time just for YOU, let Matwork & Studio Pilates help put you back together!

### STOKE HAMMOND - MONDAY

- ✓ 9.15am Intermediate
- ✓ 10.30am Gentle/Osteoporosis
- ✓ 12noon Beginners
- ✓ 7.15pm Mixed Level

**BODY CONTROL  
PILATES.**



### STUDIO -

TUESDAY/WEDNESDAY/THURSDAY

- ✓ 1:1 and 2:1 private sessions

ZOOM - WEDNESDAY DAY/EVE

SWANBOURNE - FRIDAY

[louisa.pilates@gmail.com](mailto:louisa.pilates@gmail.com) [www.louisaharrisPilates.co.uk](http://www.louisaharrisPilates.co.uk) 07941203589

**YOU COULD ADVERTISE YOUR**

**COMPANY OR SERVICES**

**HERE FOR JUST £30 A YEAR**

**(6 BIMONTHLY EDITIONS)**

**IF YOU ARE INTERESTED THEN**

**PLEASE EMAIL:**

[enquiries@shcommunityassociation.co.uk](mailto:enquiries@shcommunityassociation.co.uk)

# Sunshine Blinds

**DOMESTIC AND COMMERCIAL**

Rollers - Vertical- Pleated - Venetian - Roman - Shutters -  
Day & Night - Perfect Fit

**FREE NO OBLIGATIONS QUOTATION CONTACT US TODAY ON**

**01908 502366 or EMAIL [info@blindsmiltonkeynes.com](mailto:info@blindsmiltonkeynes.com)**

[www.blindsmiltonkeynes.com](http://www.blindsmiltonkeynes.com)



## High Ash September 2024 page 2

Not only has one year started but we're now looking ahead to next year and we have two Open Days planned for 9<sup>th</sup> October and 6<sup>th</sup> November, 9.30am - 11.30am. If you have a child starting school in September 2025, or know someone has, come along and see our fantastic school for yourself. We also have spaces in other year groups. If you'd like more information please contact the school [office@highashschool.co.uk](mailto:office@highashschool.co.uk)



Build with peace of mind from plans to dreams.

We are a professional and reliable building company with over 30 years of experience. We have a good reputation and much of our work comes from recommendations. We work closely with customers to ensure their expectations are met and all work is carried out to the highest standard. We undertake a range of high quality building work.



To view all our services please visit our website



EXTENSIONS | NEW BUILDS

HOME IMPROVEMENTS

LOFT + GARAGE CONVERSIONS

PORCHES | CAZEBOS

KITCHEN + BATHROOM INSTALLATIONS

Please contact us for a free no obligation quote.

**PAUL 07739 544 772**  
**OFFICE 01525 270 946**

[p.moore@pmconstructionukltd.com](mailto:p.moore@pmconstructionukltd.com)

[WWW.PMCONSTRUCTIONUKLTD.COM](http://WWW.PMCONSTRUCTIONUKLTD.COM)



**VOLUNTEER BUCKS**

# **VOLUNTEER BUCKS**

## **Want to volunteer but not sure how to find a role right for you?**

Volunteer Bucks is an online platform where volunteers and organisations across Buckinghamshire can find and connect with each other.

With hundreds of roles registered on the platform, you can browse and apply for volunteering opportunities from across the county according to interests, location, and availability.

It is free and easy to use, and if you aren't sure what type of role you want, there is an online quiz which can help you find the right role for you.

For more information, visit our website at [www.volunteerbucks.org.uk](http://www.volunteerbucks.org.uk) or scan the QR code.





## *Olympics*

I was channel hopping last night waiting for the second half of Last Night of the Proms. I chanced upon Diamond League Athletics. What a refreshing change - constant uninterrupted events. No interruptions from presenters with limited actual knowledge of events. Unlike the Olympics last month- More talk than action.

I did watch the opening ceremony and that's two hours of my life that I won't get back. The production was quite good but I suspect the best view was the one I had - in the dry, on the sofa at home.

I didn't see much of the first week but the last 3 days when there were finals and medals and stuff was engrossing. I think Olympic sports should be competitions for the highest, longest, fastest. Clear winners. Not arty, farty events where the winner is based on judges opinions. This year I noticed Breaking (urban dancing), Artistic gymnastics, Synchronised Diving, Artistic Swimming. I note that Parkour\* (amongst others) may be brought in for future years.

And a few weeks later we had the Paralympics. I have every admiration for the effort most of those guys put in but do I understand the classification system? Not a clue. It seems to have been designed so a one-armed, one-legged person can compete against another who has two ingrowing toenails. Obviously, I exaggerate but you see the point.



Simply the BEST Carpet & Upholstery  
cleaning you can get

- The most modern, up-to-date equipment
  - Hot Water Extraction
  - Stain Removal Service
- Most of my work is recommendations  
or repeat business
- I carry my own water and remove all waste water
- Commerical, Industrial and residential Carpet  
& Upholstery Cleaning service

*Please Call **Darren Batchelor** for a free quotation on:*

**01525 851 811 or  
Mobile 07790 034818**

Email : [sales@deep-cleaners.co.uk](mailto:sales@deep-cleaners.co.uk)  
Website : [deep-cleaners.co.uk](http://deep-cleaners.co.uk)

Approved Prochem Trained

# FIRST CLASS BEAUTY

Treatments You Can Trust

Medical Grade Facials

Massage

Reflexology

Aesthetic Treatments

Vitamin Boosters

Lip Blush

Waxing

Tinting

Lash + Brow Treatments

Manicures

Pedicures

Gels

ALL of our Aesthetic Treatments are carried out by a qualified Nurse  
Appointments ONLY



Mobile: 07715 473222

Email: [Firstclassbeauty14@gmail.com](mailto:Firstclassbeauty14@gmail.com)





I am reminded of many years back when my son enquired if I could ski for England. I have impaired mobility to the point of qualifying for a Blue badge but apparently I would only be accepted if he actually cut one of my legs off. The end of my international career!

### Grumpy Old Man

*\*parkour - the practice of traversing obstacles in a man-made or natural environment through the use of running, vaulting, jumping, climbing, rolling, and other movements in order to travel from one point to another in the quickest and most efficient way possible without the use of equipment.*

## Hair by Daniela

Salon quality services in  
the comfort of your own  
home!

Get in touch today 07854576610

I am a fully qualified hair stylist with 20 years experience. After spending a few years in various salons specialising in cutting and colouring, I then decided to start my own business venture in freelance hairdressing. I provide a very reliable and friendly service and always look forward to meeting new customers.

**£5 OFF FIRST APPOINTMENT!**

Appointments are available 7 days a week and  
prices are considerably lower than salons.



### ANSWERS TO MAVIS'S QUIZ:

- 1 – Tyrannosaurus Rex
- 2 – Mammoth
- 3 – Saber Tooth Tiger
- 4 – Velociraptor
- 5 – Dodo
- 6 – Triceratops
- 7 – Great Auk
- 8 – Stegosaurus
- 9 – Tamenian Tiger
- 10 – Brontosaurus

# Joyful Tots



Joyful Tots is an inclusive drop-in for parents, carers, those pregnant or anyone looking after a baby or preschool child. You can have a natter over refreshments and babies & toddlers learn to play. You're welcome to come even if you don't

have a baby just yet but are pregnant! Refreshments are included. Your first session is free, then £2 after that. We don't charge a termly fee because we know what it's like with little ones – you never know how they're feeling till the day!



After our summer break we're now getting back in the swing of things and are finishing off each session with a story and some nursey rhymes as well as fitting in specific play and activities. Keep a lookout on the Village Facebook page to see what we're up to next!

**Our opening hours are 10am - 11.30am on Friday mornings during (Bucks CC) term times in the side room at Stoke Hammond Community Centre**



If you'd like more information please call Diane 01525 270409 or Ashlynn 07930 240926 or message us on Facebook (Joyful Tots)

# St Luke's Church News

We're sending a big "Thankyou" to Richard and Noah for undertaking the **Bucks Historic Churches Trust Ride and Stride** this year for us! Sponsor money collected will be shared between BHCT and St Luke's for repairs and restoration.

We've had a quiet summer, although we've hosted a superb **Community Breakfast** in September plus **two weddings**: it was lovely to see the church beautifully decorated (see photo and front cover) and full of people on both occasions. If you'd like hold your wedding in church, please contact the rector, John Waller. (Details at the end of the report)

Our **Harvest Lunch** will take place just as we go to press, so hopefully all will go well and we'll have enjoyed a lovely meal! Thanks in advance to those who helped and those who donated food.

## Forthcoming Special Services:

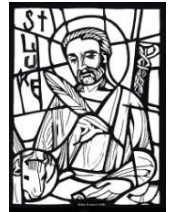
A full list of services is available elsewhere in the Newsletter, but special services include a **Café Church** service on **6<sup>th</sup> October**. This is our most accessible service – a light breakfast is served any time from **9.30am** onwards: your choice of cereal, toast, croissant/pain au chocolat or a bacon or sausage bap etc. Enjoy chatting



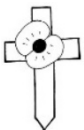
over breakfast, then at 10.15ish, the "service" begins. This might include a Bible reading, prayer, an invitation to discuss the subject or a brief talk. It finishes about 10.30ish. If you're new to church,

this is a good introduction. If you're anxious about attending, please call Diane who'll answer queries or join you if you want. All are welcome!

St Luke's Day is 18<sup>th</sup> October and on **20<sup>th</sup> October** we're holding a **festival service at 9.30am**. Our Patron Saint Luke, was well read and wrote a gospel as well as being a doctor. This is why we offer **healing prayers** (for physical, mental or emotional issues) at the end of the service if you'd like them. These are treated in confidence



- you don't need to tell us what the problem is if you don't want to, but please mention you'd like prayers on arrival so we can be ready for you.



The **Remembrance Day** service will be held on **10<sup>th</sup> November** starting at **10.45** sharp so we can be ready for the two minutes silence at 11am. Everyone's welcome, but please note that you'll be expected to remain silent for 2 minutes, so this may not be suitable for small children.

**For your diary: Christingle: Sun 8<sup>th</sup> Dec 4pm; Carol Service: Sun 15<sup>th</sup> Dec 4pm**  
**Fundraising:**

Our next fundraising activity is Afternoon Teas on **29<sup>th</sup> September 3-5pm** if you've read this in time! We'll also be celebrating **St Luke's Gift Day** from **10am-2pm** at

**church on Saturday 19<sup>th</sup> October** (the day after St Luke's Day). Letters will be sent to every home in the village asking for donations to the church repair and restoration fund. To make a gift, please send a BACS to Stoke Hammond Parochial Church



Council sort code: 20-57-40 ac no. 00869198 and tell our Treasurer that you've done so. ([treasurer.shpcc@yahoo.com](mailto:treasurer.shpcc@yahoo.com)). Alternatively put your

donation in a labelled envelope and drop it at Abbotsford, Newton Rd or bring it to the Gift Day, where we are offering **complimentary refreshments** (inc. home-made cakes!) between 10am and 2pm and home-made soup and a roll between 12 and 2pm. (You can still visit for the Gift Day refreshments if you've paid by BACS and even if you can't afford to or don't want to donate!)

The annual **Christmas Fayre** will be held on **Saturday 30<sup>th</sup> November** from **1-4pm** in the **Community Centre**. We're still planning this, but are hoping to have a variety of stalls including Bottle Tombola, Cake stall, Christian books and Advent candles, Christmas gifts and cards, Plants, Hamper Raffle, Refreshments, and a visit from a jovial gentleman in red!



We'll also be hosting the **Christmas Tree festival** again on **7<sup>th</sup>-8<sup>th</sup> December in church** with thanks to Hazel Turner. The event is free (refreshments available), but you can make donations if you want to.

Village organisations are invited to decorate a Christmas tree on the theme: "Village Life through the Year". If you're an organisation (or individual!) that hasn't heard from Hazel and would like to decorate a tree, please call her on 270404.

## **Church Activities:**

**Prayers:** The prayer group meets twice a month. We pray for individuals, the community, local organisations, and national & international issues. All prayers are in strict confidence. We're happy to accept prayer requests: request cards are available at the Community Breakfast or churchwardens or call us. (see below)



The next **Community Breakfasts** are on **12<sup>th</sup> October** and **9<sup>th</sup> November** at the



**Community Centre**. Orders taken from **8.30 to 10.30am**. As well as full English, we serve croissants, fruit salad, cereal, toast etc.

You can bring visitors too! There's no charge, but you can make a donation if you want. Food bank donations are also collected here.

The **Foodbank** in the church porch is free to all. Villagers are welcome to use it **on an ad hoc basis**. If you're in desperate need, there's a list of phone numbers in the porch for those who need more or regular support. There's a family box which contains family meal items and duplicate items. If you can contribute, financially or in goods, please contact Dave or Diane Webber (see below) Items most needed: ready meals eg beans with sausages/ tinned casserole, veg oil, fruit juice/squash and sugar.



**Toy Swap Shop:** in the church porch so feel free to use it. If you have toys, games or **children's** books that no longer need, please donate them to the Swap Shop.



**Bible verse of the month:** *Mark 7 v 25b - 30: ...a woman whose little daughter was possessed by an impure spirit came and fell at his [Jesus'] feet. <sup>26</sup> The woman was a Greek, born in Syrian Phoenicia. She begged Jesus to drive the demon out of her daughter.*



<sup>27</sup> “First let the children eat all they want,” he told her, “for it is not right to take the children’s bread and toss it to the dogs.”

<sup>28</sup> “Lord,” she replied, “even the dogs under the table eat the children’s crumbs.”

<sup>29</sup> Then he told her, “For such a reply, you may go; the demon has left your daughter.”

<sup>30</sup> She went home and found her child lying on the bed, and the demon gone.

**What does it mean?:** This looks like a woman challenging Jesus – in those days an outrageous thing to do, as women had no status and as a foreigner she was ritually unclean to Jesus, who was Jewish. Jesus at first seemed to reject her plea, but he only wanted to see how much faith she had. Her persistence paid off when he realised she really **did** have faith and believed he could cure her daughter, so she was rewarded for her faith.

**Funeral information:** Clergy can conduct a funeral service at a crematorium if you wish. New rules mean that crematoria are not offering a religious service by default: it must be specifically requested. Also, any village resident can be buried or have their ashes buried in the churchyard (for a small fee) if wished. Memorial stones must conform to the Oxford Diocese regulations. Please note that rules regarding churchyard memorials have changed. If you’d like more details, please speak to the Rector or Churchwarden Harry Davies.



**Church Benefice Website:** [www.brickhillschurches.org.uk](http://www.brickhillschurches.org.uk).

St Luke’s offers baptisms, weddings and funerals. Please contact the Rector if you’d like to discuss any of these (contact details on the website). His phone goes straight to an answerphone but he’ll reply as soon as he can, or contact a Churchwarden. The Rector’s day off is Monday. If you have a prayer request or enquiry, please call **Churchwardens: Harry on 07773065271 or Diane on 270409.**

**MAP**  
(Not to scale)



# Prestige

KITCHENS



☎ 07720 374254

@ info@prestigekitchens.co.uk

🌐 www.prestigekitchens.co.uk



We are a bespoke kitchen specialist located in Buckinghamshire. Offering a complete service with tailored kitchen design, timings and project management to suit your budget, space and lifestyle.



- Bespoke design service
- Personalised Installation
- Colour matched cabinets
- Project Managed from start to finish
- Cabinets delivered completely rigid
- 25 year guarantee with all cabinets

10 Roman Field, Stoke Hammond, MK17 9EP



# News from Buckinghamshire Council

Dear Resident

9 September 2024

I hope you have enjoyed a good summer and for those who got away or who took some time off, I hope it was a good break. I managed a few weeks away and am now back to a very packed agenda.

I'd also like to congratulate students who received exam results over the summer holidays. I know students, families and school staff have worked very hard to achieve a good set of GCSE and A Level results in our schools. Results day can be a mixed experience so we have got plenty of advice for next steps, whatever outcome you achieved.



Council services, of course, have been running as usual over the summer and I'd like to thank all our staff and everyone else, particularly key workers in the NHS, police and other emergency services, for whom summer is no different and who've been working hard throughout.

## **Proposed changes to planning laws**

I have written about this before but I make no apology for majoring on it again. In my opinion this is the subject that, above all others, could most directly influence and potentially radically change our towns and villages. We now have a lot more details from the new Government and I want to make sure that you are aware of them.

The proposed changes relate to something called the 'National Planning Policy Framework'. This is simply the legal rules that all councils must follow in Planning. The proposed changes are complex but I will try to simplify them.

Firstly, the new Government is proposing introducing non-negotiable legal targets for the number of houses that must be planned to be built in an area. Previously this was a 'starting point' and could be modified due to constraints such as the Green Belt, the Chilterns Area of Outstanding National Beauty, flood plains, agricultural value etc. This would no longer be the case.

Secondly, the way this target would be calculated has changed very significantly. This means that the proposed target for Buckinghamshire would increase from 61,152 to 86,562 by 2045 - an increase of 42%! At the same time the proposed

# MOBILE VEHICLE ACTIVATED SIGN (MVAS) RESULTS FOR LEIGHTON RD 17/07/24 TO 19/09/24

For Project: Leighton Road 17/07/24 - 19/09/24

Project Notes:

Location/Name:

Report Generated: 19/09/2024

Speed Intervals 5 MPH 10:51:22

Time Intervals Instant

Traffic Report From 17/07/2024 15:00:00 19/09/2024 09:59:59

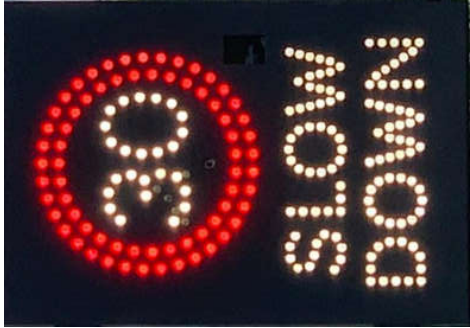
85th Percentile Speed 37.5 MPH

85th Percentile Vehicles 105341

Max Speed 60 MPH on 22/07/2024 12:30:00

Total Vehicles 123931

AADT: 1942



## Volumes -

### weekly counts

Time	5 Day	7 Day
Average Daily	1972	1905
AM Peak	135	137
PM Peak	165	151

## Speed

Speed Limit:

85th Percentile Speed:

50th Percentile Speed:

10 MPH Pace Interval:

Average Speed:

35.0 MPH

to

	Monday	Tuesday	Wednesday	Thursday	Friday	Saturday	Sunday
Count over limit	9515	9860	10534	10391	10356	8664	7850
% over limit	55.1	54.6	54.4	53.7	55.1	53.0	52.5
Avg Speeder	35.4	35.3	35.4	35.4	35.4	35.3	35.4
Avg Speed	12.6	12.4	12.2	12.3	12.4	13.1	13.2



target for London has been reduced. On top of this Buckinghamshire would have to allow for an additional 5% to encourage builders to build and finally the Government is proposing so called 'new towns' of at least an extra 10,000 homes in addition. As a result, Buckinghamshire could be required to plan for and absorb almost an additional 100,000 houses in the next few years.

To enable this the next major change being proposed is to the Green Belt. Councils would be required to designate areas that make a 'limited contribution' to the overall Green Belt as so called 'grey belt'. Developers would also be able to put forward sites that they claim are 'grey belt'. This is clearly a very vague definition and could lead to many applications to build across much of the Green Belt.

Very importantly, if the changes come into effect as currently proposed then from early next year it will be very difficult to refuse applications even if they are not in existing and approved Local Plans.

Lastly, I am also concerned that, with the potential for such significant housebuilding in Buckinghamshire, there is no commitment to fund the necessary infrastructure and facilities from doctors to roads, schools and sewage treatment that will be needed to accompany these very large numbers of new homes and new residents.

The Government has been running a consultation on these changes during August and this will finish on Tuesday 24 September. I want to make sure that you are aware of these proposals and the consultation. You may strongly support these changes and think them a good thing or you may share my concerns. Either way I would encourage you to make your views known now. Once the changes come into effect the council will have no option but to implement them and this will mean big changes to existing Local Plans and Neighbourhood Plans. Now is the time to make your views known.

Please take time to submit a response to the government's consultation on these proposed changes.

## **Roads**

I'm sure many of you will have noticed an increased amount of roadworks this summer. I know only too well how much these irritate and annoy drivers, local residents and businesses. As I said before the break, we are at a point where the sharp increase in requests from utility firms, coupled with the impact of HS2 works, means it is harder than ever to identify 'quieter times' where we can schedule works to minimise impact, plus programme in our own £110 million maintenance and improvement works.

We have completed a number of resurfacing schemes over the summer with the better weather – which of course, is a positive. I know residents will have been impacted by roadworks and temporary lights however, especially from the two-week closure of the A418 into Aylesbury by HS2 – work that is beyond the council's control.

# MOBILE VEHICLE ACTIVATED SIGN (MVAS) RESULTS FOR FENNY RD 17/07/24 TO 19/09/24

For Project:

Fenny Road 17/07/24 - 19/09/24

Project Notes:

Location/Name:

Report Generated:

Speed Intervals

Time Intervals

Traffic Report From

85th Percentile Speed

85th Percentile Vehicles

Max Speed

Total Vehicles

AAOT:

Incoming

19/09/2024

5 MPH

Instant

17/07/2024

32.2 MPH

121182

65 MPH

142567

2224

10:58:51

09:00:00

through

19/09/2024

10:59:59

14/09/2024

18:35:00

## Volumes -

weekly counts

Time	5 Day	7 Day
Average Daily	2269	2191
AM Peak	156	165
PM Peak	241	214

## Speed

Speed Limit:

85th Percentile Speed:

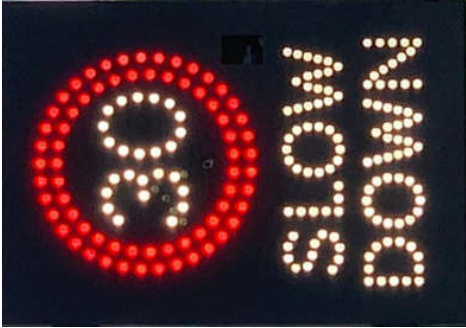
50th Percentile Speed:

10 MPH Pace Interval:

Average Speed:

30		
32.2		
26.2		
20.0 MPH	to	30.0 MPH
26.38		

	Monday	Tuesday	Wednesday	Thursday	Friday	Saturday	Sunday
Count over limit	4413	4335	4798	4778	5100	4131	3536
% over limit	22.5	21.3	21.0	21.9	23.3	21.3	21.4
Avg Speedier	34.4	34.4	34.3	34.2	34.4	34.4	34.4
Avg Speed	12.5	12.2	11.9	12.0	12.1	12.1	13.0



Both the council's Cabinet Member for Transport, Steven Broadbent, and I met with senior representatives from the main utilities firms last week. We made them very aware of the disruption that is being caused and, in particular, issues such as traffic lights being put up with no work taking place, lack of legal signage and repeat works on the same roads! We are working hard to encourage them to schedule works outside of busy times, particularly morning and evenings at the traditional 'rush hour' times.

At present the fines we can levy are too small to be an effective deterrent. Very importantly, we had worked with the previous Government to both significantly increase fines but also introduce something called a 'Lane Rental' scheme. Sadly, the election stopped these changes being introduced. We are now discussing the Lane Rental scheme with the new Government. This would cover major roads in the county, where, if a utility firm wants to carry out works on the highway, they effectively have to 'rent out' the section of road they will be digging up, paying for the time they are taking the road out of use. This should prove a significant incentive to get works completed on time. and we hope will be far more effective than the limited amount we are able to fine utilities firms when they don't adhere to the conditions of their works permits

I know management of roadworks has been a significant concern for residents throughout this year with the higher levels of disruption and we are doing what we can to improve things, including increasing the number of people in our Streetworks Team and carrying out more regular site inspections to check firms are working within their permit arrangements.

I do read local social media posts that always blame the council for work mainly by the utility companies and tell us that we should 'get a grip' but the reality is that we currently have limited powers.

I do hope that these actions, along with the conversations we're having with the utilities firms will make a difference; I do have to be honest though, the level of works on our local network is at an all-time high so the best advice we can offer is to 'check before you travel' even on your regular journeys. With our limited powers, we will do our very best to improve things and do what we can to minimise disruption

### **Money Matters – give your views on how your council tax should be spent**

Summer is barely over but setting the annual budget, particularly for a large council like ours, takes months of planning – alongside constant budget monitoring of our spending and income of course. We have started the process for working out what our 2025/26 budget will look like and how much money we will need to cover the costs of our services and the big projects residents want us to fund like our £110 million road improvements programme and investing in our town centres.

Setting our budget has been acutely challenging in recent years and things haven't got any easier. Funding is tight and costs and demand have shot up, particularly for services that support our most vulnerable residents. As I've mentioned before four services (adult's and children's social care, temporary housing accommodation and

# MOBILE VEHICLE ACTIVATED SIGN (MVAS) RESULTS FOR NEWTON RD 17/07/24 TO 19/09/24

For Project: Newton Road 17/07/24 - 19/09/24

Project Notes:

Location/Name:

Report Generated:

Speed Intervals

Time Intervals

Traffic Report From

85th Percentile Speed

85th Percentile Vehicles

Max Speed

Total Vehicles

AADT:

Incoming

19/09/2024

5 MPH

Instant

17/07/2024

29.6 MPH

22964

50 MPH

27016

423

10:55:54

15:00:00

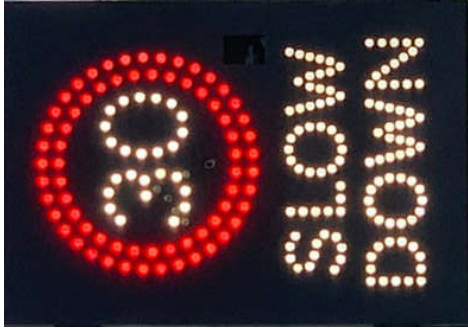
on

24/07/2024

through

19/09/2024

10:59:59



## Volumes -

### weekly counts

Time	5 Day	7 Day
Average Daily	440	414
AM Peak	31	28
PM Peak	48	42

## Speed

Speed Limit:

30

85th Percentile Speed:

29.6

50th Percentile Speed:

25.2

10 MPH Pace Interval:

20.0 MPH

Average Speed:

24.93

30.0 MPH

to

Monday	Tuesday	Wednesday	Thursday	Friday	Saturday	Sunday
456	455	536	523	539	413	361
11.9	11.4	11.8	12.6	12.9	12.6	11.9
33.2	33.0	33.1	33.2	33.2	33.2	33.4
16.6	16.2	15.8	16.7	16.5	17.6	17.9



taking children with additional needs to and from school) take a massive 71% of our overall budget. This leaves us with 29% to cover everything else, so with council tax making up 79% of the funding for all of our costs, its crucial residents tell us how they want this money spent.

We are also awaiting any information from the new Government about any additional reductions in our funding in the coming national Budget. I suspect that we will again be faced with some very tough decisions to take locally to continue to 'balance the books' so please tell us what your priorities are.

Our 'Money Matters' survey is the way to do this.

### **Winter Fuel Payment and Pension credit – important information**

We have a large population of pensioners in Buckinghamshire and under the government's plans to withdraw Winter Fuel Payments from all except those in receipt of pension credit or other means tested benefits, the council estimates 93% of all Buckinghamshire pensioners could lose this allowance, which is vital to many of our older households. A significant concern is that a number of eligible pensioners are not currently claiming pension credit, so will miss out on a Winter Fuel Payment when they are eligible and in genuine need. Therefore, I wanted to highlight how to check if you or someone you know is eligible – through this information on the government's website. Given the proposal to withdraw the payment from most pensioners, it's critical that those eligible for these payments receive them. We will be providing more information on this in the coming days and weeks and it's a topic I will be revisiting in future updates.

### **Local events**

After updating you on planning, roads and budgets, while these are of course, pressing and important, it's nice to finish on something a bit 'lighter'!

We have had some fantastic events over the last few days and weeks that I wanted to highlight. Firstly, High Wycombe had a brand new, day-long festival for the whole town on Sunday (8 September). Borne out of the council's WhizzFizz festival, this was a feast of arts, culture, entertainment and food.



After a little early rain, the sun shone. Highlights were exhibitions, food stalls, theatre performances and workshops, with live music too! I went along and it was fantastic to see so much going on and so many people enjoying themselves. It was a day for the whole family to enjoy. Thanks go to the High Wycombe Community Board and the Rothschild Foundation for additional funding and grants which helped make this happen.

## YOUR NEIGHBOURHOOD POLICING TEAM

### Wing and Ivinghoe



**Inspector  
James Davies**



**Sergeant  
David Kuttner**



**Police Constable  
Dionne Edwards**



**Police Constable  
Jake Bye**



**PCSO  
Tina Hobson**



**PCSO  
Connor Smith**



**Special Constable  
Sam Richards**

The neighbourhood policing team work with our local communities to make Aylesbury Vale safer

To contact your local Team call  
**101** or email them on

[WingNHPT@thamesvalley.police.uk](mailto:WingNHPT@thamesvalley.police.uk)

You can also report an incident on our website:

[www.thamesvalley.police.uk](http://www.thamesvalley.police.uk)

In an emergency always call 999

Visit us on Facebook at [www.facebook.com/TVPAylesburyVale](https://www.facebook.com/TVPAylesburyVale)





After a morning in High Wycombe, I went to Amersham to experience their annual Heritage Day. This runs every year and is a brilliant occasion with vintage cars, street food, artisan markets and exhibitions by the local Museum. Again, I had a great time and congratulations to all involved in organising it.

We are blessed with a rich cultural offering here in Buckinghamshire and there's always something to do. You can also check out our touring Creative Champions Art Exhibition, being hosted at community locations across the county to celebrate the county's proud paralympic heritage. This weekend there was also a Heritage Open Day at the Discover Bucks Museum in Aylesbury and a Steaming Day at Buckinghamshire Railway Centre near Quainton this weekend; sadly, I could not make it to these but I hope they also went really well.

We have a busy time coming up bringing forward new policies and decisions so I'll keep you fully informed through these regular updates, if you find them useful please circulate them to local websites, Facebook groups and encourage friends and family to sign up via the sign-up page on our website.

Yours,

**Martin Tett** Leader of Buckinghamshire Council

• **GET IN TOUCH** •



**ONLINE**  
Click here for our  
contact form



**TELEPHONE**  
Call us on  
0300 131 6000\*

\* Phone lines are open Monday to Thursday 9am-5:30pm, Friday 9am-5pm. Phone lines are closed on bank holidays.

To keep up to date with the latest news from Buckinghamshire Council, please follow us on social media:



Buckinghamshire Council

The Gateway, Gatehouse Road, Aylesbury, HP19 8FF

[buckinghamshire.gov.uk](http://buckinghamshire.gov.uk)

## VILLAGE DIARY

Tuesday 1 <sup>st</sup> October	Q&A with Callum Anderson MP – Community Centre – 18.30
Tuesday 1 <sup>st</sup> October	Parish Council Meeting – Community Centre - 19.30
Saturday 12 <sup>th</sup> October	Community Breakfast – Community Centre 08.30 – 10.30
Friday 18 <sup>th</sup> October	Gin Tasting Evening – Community Centre – From 19.00
Saturday 9 <sup>th</sup> November	Community Breakfast – Community Centre 08.30 – 10.30
Saturday 30 <sup>th</sup> November	St Luke's Christmas Fayre – Community Centre – tba
Saturday 7 <sup>th</sup> December	Senior Citizens Xmas Lunch – Community Centre – 13.00

*For Church dates/times please see the 'Church Services' section*

### **ORGANISATIONS THAT USE THE COMMUNITY CENTRE**

#### **High Ash Scouts, Cubs (Beavers)**

Thursday 17.30 – 21.30hrs

Contact: Dave Pollington 01525 270864

#### **Buttons Pre-School**

Monday – Friday 09.00 – 15.00hrs

Contact: 07495 369320 or 01908 533404

#### **Louisa Harris Pilates**

Monday day/evening

Contact: 07941 203589

[Louisa.pilates@gmail.com](mailto:Louisa.pilates@gmail.com)

[www.louisaharrisilates.co.uk](http://www.louisaharrisilates.co.uk)

#### **Chair Yoga**

Wednesday 9.30 – 10.15hrs

Contact: Sally Peers 07766 756199

[sallyyogalondon@gmail.com](mailto:sallyyogalondon@gmail.com)

#### **Joyful Tots**

Friday 10.00 – 11/30hrs

Contact: Diane 01525 270409

or Linda 07971 134497

**To Hire the Hall please telephone 01525 270151 or e-mail: [enquiries@shcommunityassociation.co.uk](mailto:enquiries@shcommunityassociation.co.uk)**

### **SH NEWS – ADVERTISING RATES**

For 6 bimonthly editions: **FULL Page – £85.00 HALF Page – £50.00 QTR Page – £30.00**

**To upgrade to full colour on inside front, inside rear or outside rear cover,  
additional per edition cost:**

**FULL Page – plus £15.00 HALF Page – plus £10.00 QUARTER Page – plus £5.00**

**Note: Upgrading to full colour is on a per edition basis, not a commitment for 6 editions**

Buckinghamshire Council	0300-131-6000
Aylesbury Vale Area – Buckinghamshire Council	01296-585858
Registrar ( <i>Births &amp; Deaths</i> )	01296-383005
Registrar ( <i>Marriages</i> )	01296-382481
Fly-Tipping on Roads	01296-382416
Social Care Services ( <i>Emergency Duty</i> )	0800-999-7677
MK General Hospital	01908-660033
Stoke Mandeville Hospital	01296-315000
Luton & Dunstable Hospital	01582-491122
SH Gardening Club ( <i>Eileen Curry</i> )	01525-270858
Clerk to the Parish Council ( <i>Kelly Harris</i> )	07793-131810
Parish Council Chairman ( <i>Mubasshir Ajaz</i> )	07775 932925
Gt Brickhill Ward Councillor ( <i>Phil Gomm</i> )	07778 117647
Gt Brickhill Ward Councillor ( <i>Jilly Jordan</i> )	07740 308468
Gt Brickhill Ward Councillor ( <i>Iain Macpherson</i> )	
<a href="mailto:iain.macpherson@buckinghamshire.gov.uk">iain.macpherson@buckinghamshire.gov.uk</a>	
MP – Bucks & Bletchley. ( <i>Callum Anderson</i> )	
<a href="mailto:callum.anderson.mp@parliament.uk">callum.anderson.mp@parliament.uk</a>	
PCSO Tina Hobson	07779 586565
High Ash School	01525-261620
St Luke's Church ( <i>Revd John Waller</i> )	01525-261062
St Luke's Church Warden ( <i>Diane Webber</i> )	01525-270409
St Luke's Church Warden (Harry Davies)	01234-822780
Stewkley Methodist Church (Mary Cottrell)	01296 688741

**Police non-emergency number 101**

**NHS Helpline non-emergency number 111**



## EDITOR'S NOTE

If you haven't read Martin Tett the leader of Buckinghamshire Councils newsletter in this edition, then may I suggest you go back and do indeed read same. Particularly his comments about the new housing growth targets that Buckinghamshire is going to have to achieve from now until 2045 and how in order to meet these numbers that Local and Neighbourhood Plans could be overridden and Green Belt areas redefined as Grey Belt. We have already absorbed a large number of new homes in our Parish but we could still face considerably more.

It would be remiss if I didn't mention the sad passing of Mary Bonner a lifelong resident of Stoke Hammond who meant so much to our community. I was most pleased to be able to include in this edition the lovely eulogy to Mary by her daughter Liz and son Richard.

May I please have copy for the December/January issue by the 22<sup>nd</sup> November

Greg Noble, The Birches, Church Road, Stoke Hammond. MK17 9BP

01525 270744 E-mail: [gregnoble1980@aol.com](mailto:gregnoble1980@aol.com)



## WASTE COLLECTION DATES

### STOKE HAMMOND VILLAGE & NEWTON LEYS SOUTH

<div>Waste Bin:</div> 	<div>Recycling Bin:</div>  <div>Paper, glass, cardboard, plastics, cartons, cans &amp; tins</div>	<div>Food Waste Bin:</div>  <div>Non-recyclable or compostable.</div>	<div>Garden Waste Bin:</div> 
Wednesday 2 Oct		Wednesday 2 Oct	Wednesday 2 Oct
	Wednesday 9 Oct	Wednesday 9 Oct	
Wednesday 16 Oct		Wednesday 16 Oct	Wednesday 16 Oct
	Wednesday 23 Oct	Wednesday 23 Oct	
Wednesday 30 Oct		Wednesday 30 Oct	Wednesday 30 Oct
	Wednesday 6 Nov	Wednesday 6 Nov	
Wednesday 13 Nov		Wednesday 13 Nov	Wednesday 13 Nov
	Wednesday 20 Nov	Wednesday 20 Nov	
Wednesday 27 Nov		Wednesday 27 Nov	Wednesday 27 Nov
	Wednesday 4 Dec	Wednesday 4 Dec	

# Coming to Stewkley

## THIS NOVEMBER

STEWKLEY VILLAGE HALL



# ALADDIN

DOESN'T GO QUITE AS PLANNED



WEDS 20TH- SAT 23RD NOVEMBER AT 8PM - £7.50

SAT 23RD FAMILY MATINEE 2PM - £5

LICENSED BAR OPENS 30 MINS PRIOR TO THE SHOW

TICKETS ON SALE AT STEWKLEY VILLAGE HALL:

SUNDAYS 27TH OCT, 3RD, 10TH AND 17TH NOV 10AM - NOON

MONDAYS: 28TH OCT, 4TH, 11TH AND 18TH NOV 7-9 PM

Enquiries: [stewkleyplayers@gmail.com](mailto:stewkleyplayers@gmail.com)

# GIN TASTING EVENING



Friday 18th October

Kicking Off at 7pm

Stoke Hammond Community Centre

ESTABLISHED  
1935

*Real Fruit. Real Flavour.*

**FOX DENTON**  
SPIRITS & LIQUEURS

***Join us at the Community Centre when Buckingham based Foxdenton Estate Distillery Company will be giving a presentation and a chance for you to sample and indeed buy if you wish several of their renowned flavoured gins. The ticket price of £10 will include the gin tasting and a selection of tasty nibbles***

***For tickets, please contact either Ann on 07799 396990 Fran on 07836 632651 or Greg on 07729 691888 alternatively send an email to [enquiries@shcommunityassociation.co.uk](mailto:enquiries@shcommunityassociation.co.uk)***



**MUSIC BY  
DJ JAMES**

***There will also be a raffle on the night where you can win a bottle of the most popular of the tasted gins.***



**LICENSED BAR**  
Cash & card

# NOTICE

To all OIL and LPG users in the village

## **AIR SOURCE HEAT PUMP PRESENTATION**

Stoke Hammond Community Centre,  
Bragenham Side, Stoke Hammond, MK17 9DB

**Wednesday 27th November 2024**

Evening: 7.00 - 8.00pm

*Tea and coffee will be served*

There has been a lot of scepticism and misinformation about Heat Pumps so come along and find out:

- **Why correct installation is critical and how to avoid a bad job**
- **Why the Government will pay you £7500 to install a Heat Pump (NB limited availability)**
- **Why VAT has been removed from Heat Pumps this year, so there's no better time to invest**
- **How you can keep warm day & night - and still cut your energy bills and carbon**

If you cannot make the meeting or would like more information, please call Neil Holley on:

Office: 01992 641 461

Mobile: 07767 831 763

