

# SH & NLS NEWS

February - March 2026

Stoke Hammond & Newton Leys South



**THE STOKE HAMMOND**

**NEIGHBOURHOOD PLAN REFERENDUM**

**it's Time to have your Say!**

**Don't Miss this Opportunity to Vote  
on the Future of your Community**

**THURSDAY 5<sup>th</sup> FEBRUARY 2026 7am – 10pm**

**Community Centre, Bragenham Side. MK17 9DB**

All eligible residents within the Parish can vote.

Remember, the Neighbourhood Plan influences:

Housing & Development

Community Facilities

Protection of Local Character

How area grows in the future

**make your voice count**  
**Vote on 5th February 2026**

For more details about the Stoke Hammond Neighbourhood Plan, visit:

[www.stokehammond-pc.gov.uk](http://www.stokehammond-pc.gov.uk)

**STOKE HAMMOND**  
**WOMBLES**  
**LITTER**  
**PICK!**



**SUNDAY 22ND MARCH 10AM – 1PM**  
**MEET OUTSIDE THE COMMUNITY CENTRE**

# Brickhills and Stoke Hammond Churches

## Come and See

Dear Friends,

This year Easter is quite early, on April 5th, so the season of Lent will also begin early, after Ash Wednesday on February 18<sup>th</sup>.

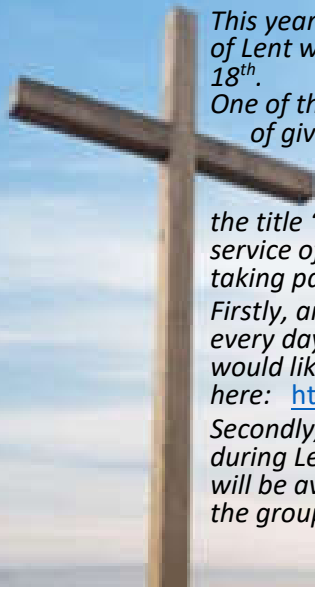
One of the customs of Lent, along with the traditional discipline of giving up something we usually enjoy, is to take time to pause and reflect on our faith and God's calling to us.

Each year our diocese produces a Lent course, under the title 'Come and See'. This year the course will focus on our service of Holy Communion, and there will be two ways of taking part in it.

Firstly, anyone who is interested can register to receive an email every day, offering some brief reflections and prayers. If you would like to try this, you can register on our diocesan website here: <https://www.oxford.anglican.org/come-and-see/>

Secondly, we will be holding some weekly discussion groups during Lent, to discuss the course material together. Full details will be available soon, and you would be welcome to join one of the groups, as we seek to renew and deepen our faith.

Rev'd. John Waller



## ST LUKE'S STOKE HAMMOND CHURCH SERVICE DATES TO MARCH 2026

### FEBRUARY

- 1<sup>st</sup> Feb: 11.00am Family Service - DW  
8<sup>th</sup> Feb: 10.00am Benefice Holy Communion - JW  
15<sup>th</sup> Feb: 09.30am Morning Worship - JH  
18<sup>th</sup> Feb: 10.30am **Ash Wednesday**  
Benefice Said Holy Communion - JW  
22<sup>nd</sup> Feb: 09.30am Holy Communion – JW



**JW – Rev John Waller**

**DW – Dave Webber**

**JH – Jeremy Hopkinson**

### MARCH

- 1<sup>st</sup> Mar: 09.30am Morning Worship - tba  
8<sup>th</sup> Mar: 11.00am Family Service with Baptism - JW  
15<sup>th</sup> Mar: 09.30am **Mothering Sunday** - Family Service - JW  
22<sup>nd</sup> Mar: 10.00am Benefice Holy Communion - JW  
(inc. Passion Dramatisation)

**Note** To be held at All Saints Bow Brickhill

:22<sup>nd</sup> Mar: 06.00pm Said Compline – JW

Followed by Church Parish AGM at 6.30pm all welcome

29<sup>th</sup> Mar: 09.30am **Palm Sunday Holy Communion** - JW

*Refreshments unless otherwise stated are served after all services at St Luke's*

**Details and any late changes to church services are posted on the Benefice Website:**  
**[www.brickhillchurches.org.uk](http://www.brickhillchurches.org.uk)**



# WE BUY RECORDS!!!

ALL GENRES, ALL ERAS,  
NO COLLECTION IS  
TOO BIG OR SMALL.



BASED IN **WING** AND  
SERVING ALL OF  
**BUCKINGHAMSHIRE**,  
WE HAVE OVER  
**35 YEARS**  
**EXPERIENCE** OF  
VINYL & MUSIC  
MEMORABILIA AND  
WE WILL PAY  
**THE BEST PRICES.**

CALL **ANGELA** ON  
07976 204249  
OR EMAIL

[TURNTABLE.RECORDS@HOTMAIL.COM](mailto:TURNTABLE.RECORDS@HOTMAIL.COM)

## BARTON PETROLEUM

*Supplying Heating Oil to  
Stoke Hammond and  
the surrounding villages  
for over 50 years*

Kelly Mcloughlin, Depot Manager

**01234 822488**



## Beauty Within Massages, Facials, Nails & more.

Discover a sanctuary for  
beauty treatments, only at  
Beauty Within. I am  
dedicated to ensuring that  
every client feels valued  
and pampered. 1st 10  
clients will get a 25%  
discount.

Email or call Gaby for  
treatments & prices.  
[gaby@beautywithin.online](mailto:gaby@beautywithin.online) or  
07943754276

[www.Beautywithin.online](http://www.Beautywithin.online)



## PARISH COUNCIL NEWS

With the postal problems we have been suffering of late in Stoke Hammond, some of you may well not have yet or only just received your polling cards for the Neighbourhood Plan Referendum. We have done our very best with only having a relatively short notice to publicise what is a very significant event, perhaps one could even say a potential milestone occasion for Stoke Hammond, hence the reason the front cover of this edition of the SH & NLS News is dedicated to reminding you of how important it is that you have your say, by heading to the Community Centre on Thursday the 5<sup>th</sup> February and placing your vote. Unlike conventional elections, the actual count although not open to the public, will also take place at the Community Centre immediately after the close of poll at 10pm, so the result should be quite quickly known. Irrespective of the actual result, we should recognise and acknowledge all the hard work and effort put in by so many of our community and bearing in mind we are talking of something like 4 plus years, in putting this Plan together.

At the time of preparing this latest PC News, we are still awaiting the outcome of the appeal hearing held in December for the non determination of the outline planning application for up to 290 new dwellings on the site known as Chadwell Farm that sits opposite and to the south of Newton Leys. We were represented at the hearing by Cllr Stephen Clarke, who reiterated the reasons as to why as a PC we had objected to the original application and thus the appeal should not be upheld. Once the result is known we will publish via social media and our website.

The festive season tends to be quieter on the PC News front, with no public meeting being held in December and no planning applications received that had to be considered. The PC did however get together for a budget meeting to decide the required finances for the new financial year, and with more homes now forming part of the Council Tax precept that we receive, it has meant that whilst the budget has increased, the Parish precept that you will pay from April of this year, will remain the same. This new budget was approved and ratified at our January PC Meeting.



It was obviously most disappointing to hear about the break in at the Sports Club in the early hours of New Years Day, and full credit to the Sports Club for getting the club cleaned up and back in action in such a short time. Sadly, this was not the only unsavoury incident, as the very next night (we assume it happened at night), some irksome individual/s decided it would be good fun to destroy the dog litter bin on the Leighton Road at the entrance to the byway that leads through to Kings Farm. The bin has since been replaced by your PC.

You may recall in the last PC News, mention was made about the possibility of replacing the bus shelter on the Fenny road with a more pleasing architecturally designed timber version, something we plan to do over time for all of our older shelters. Well, a decision was made at the January PC meeting to go ahead with the installation of a new shelter manufactured



by Littlethorp of Leicester. The design chosen as illustrated is their St Neots model, but with glazing to both the front and sides. The total cost of circa £21,376 + VAT includes both the removal and disposal of the old shelter and delivery and installation of the new. We just now need to seek approval from Bucks Highways, which hopefully will just be a formality. This shelter will certainly be more pleasing on the eye than the current one.

There were other matters of community facility purchases also discussed at the January PC meeting, relating to gym equipment, a notice board and defibrillator all for Newton Leys South. Unfortunately, no new equipment can yet be installed as the land areas are currently owned by Taylor Wimpey but are to be adopted in the very near future by the Parish Council. The PC decided to still review these potential purchases so that if agreed they could be implemented as soon as the adoption process is completed. Ultimately, all 3 proposals were ratified by the PC, namely a 'Fresh Air Fitness' package of 9 pieces of gym equipment at £16,074 + VAT, a new main-made timber notice board with a Stoke Hammond header at £1301.70 + VAT and a budget of upto £5000 to include installation for a new solar powered defib cabinet and the defibrillator itself. The cabinet to be located next to the site of the new gym equipment. It was also agreed that should delays in the land adoption process invalidate the current quoted figures, a variation of +/- 10% on any new quotation would be acceptable without the need to reconsult with the PC.

As aforementioned there was no PC meeting in December, and for our January meeting held on the evening of the 13<sup>th</sup> we headed off to the Newton Leys Pavilion. Just prior to the meeting we learnt that Cllr Mel D'Agostino had earlier that day tendered with immediate effect their resignation from the council. We will now go through the formal process of advertising the vacancy for co-option. We must thank Cllr D'agostino although only with the Council since last May for their valued contribution which included their assistance with the PC surgeries. Reverting to the meeting itself, the PC were joined by 4 members of the public (MoP) and for part of the meeting by our Unitary Councillor Caroline Cornell. There were many financial and budgetary matters to be discussed and agreed which did take some time to go through, as for other items of more importance, these were as follows:

- The Clerk was pleased to advise that the streetlight at the entrance to Church Road had now been repaired and that a second waste bin was now in place outside of the shop, so hopefully this will reduce the overflow spillage that had been occurring. Also, various broken or dislodged boundary posts around the village have now been replaced or repaired.
- The matter of many of the streetlights on the section of the A4146 between Newton Leys and Tommy's roundabout continually flashing was brought to the attention of our Unitary Councillor as was the abandoned trailer in the layby on the same section of road.
- Cllr Champion advised that for the fields that the PC is seeking to purchase that sit between the Sports Club down to the Leighton Road, that a planning application will be submitted in the next week, for change from agricultural to recreational use.

- Cllr Ajaz had presented to the PC a proposal for what is called a 'Digital Inclusion Series' with aim of providing courses to those who are unfamiliar or not totally ofay with modern day technology. The courses presented by trained IT experts with a ratio of one trainer per 5 residents. Whilst all understood the potential benefits, the costs were quite high, so it was agreed that a flyer would be produced to be circulated around the community to first gauge the level of potential interest, before committing to any events.
- There were 3 Community Funding applications to consider, but some on the PC were a little concerned that some of the applications were not fully in keeping with the intended purpose of the fund, which is supposed to be for something that benefits the community at large. It was agreed that funds policy terms would be reviewed. As for the applications themselves, two of which were from the Sports Club, neither were approved for Community Funding, but partial financial support directly from the PC was agreed. As for the third application to help setup a new 'SheStrives' group, whose aim is to help support women and girls who are currently not in education, employment or training, with the aim of helping them gain confidence and improving their wellbeing, was unanimously agreed.
- During the public participation session, a MoP expressed concerns about the dangers when vehicles were attempting to exit Brook Farm Close and as to how the nearby bus shelter made it extremely difficult to see approaching traffic from the left, and they felt it was only a matter of time before an accident was to happen. It was suggested by Councillors that the MoP spoke with other Brook Farm residents to establish whether or not they agree this is indeed an issue, and if so, it will be raised with Bucks Highways. In the meantime, the clerk will explore the costs for replacing the plastic sides to the shelter, as the current ones are badly scratched making for restricted visibility through them.
- As one would expect the matter of the poor postal service we are currently experiencing was raised, and whilst not something the PC has any direct control over, it was agreed that we would highlight the issue with both our MP and the Brinklow Sorting Office.

Our next PC meeting is to be held on Tuesday 3<sup>rd</sup> February at the Stoke Hammond Community Centre, starting at the normal time of 7.30pm. As for the March meeting this will be held on the evening of the 3<sup>rd</sup> March again with a start time of 7.30pm and the venue subject to confirmation will be the Newton Leys Pavilion.

**Should you wish to contact your Parish Council, please do so via our clerk:**

Kelly Harris Tel: 07793 131810 Email: [clerk@stokehammond-pc.gov.uk](mailto:clerk@stokehammond-pc.gov.uk)

[www.stokehammondpc.com](http://www.stokehammondpc.com)

#### **YOUR PARISH COUNCILLORS EMAIL ADDRESSES.**

Cllr Mubasshir Ajaz (Chair) – [mubasshirajaz@stokehammond-pc.gov.uk](mailto:mubasshirajaz@stokehammond-pc.gov.uk)

Cllr Craig Champion (Vice Chair) - [craigchampion@stokehammond-pc.gov.uk](mailto:craigchampion@stokehammond-pc.gov.uk)

Cllr Stephen Clarke – [stephenclarke@stokehammond-pc.gov.uk](mailto:stephenclarke@stokehammond-pc.gov.uk)

Cllr Greg Noble - [gregnoble@stokehammond-pc.gov.uk](mailto:gregnoble@stokehammond-pc.gov.uk)

Cllr David Venn - [davidvenn@stokehammond-pc.gov.uk](mailto:davidvenn@stokehammond-pc.gov.uk)

Cllr David Jonathan – [davidjonathan@stokehammond-pc.gov.uk](mailto:davidjonathan@stokehammond-pc.gov.uk)



# STOKE HAMMOND LOCAL STORE & POST OFFICE



**Opening Hours:**

**Mon-Sat: 7.00am till 9.00pm**

**Sun: 8.00am till 9.00pm**



**Our Products:**

**"A FRIENDLY WELCOME GUARANTEED"**

News & Magazines	Beers, Wines & Spirits	Pet Food
Confectionary & Snacks	Soft Drinks	Health & Beauty Products
Bread (inc. Turney's) & Cakes	Tobacco & Cigarettes	Frozen Food & Ice Creams
Dairy Products	Groceries	Greeting Cards
Medicines	Baby Food & other Products	Household Sundries
Sandwiches & Ready Meals	Fruit & Vegetables	Stationary Items

**Other Services:**

- \* Pay-point/Top up services will be available.
- \* Cash machine will be available.
- \* Photocopying
- \* Pies & Coffee will be introduced in the morning.



# Stoke Hammond and Newton Leys South Neighbourhood Plan Update

*The plan was commenced in 2019 and it's been a long journey to get to the final stage but we have now reached the Parish Referendum which will take place on the 5th February 2026.*

*The Plan was created by a steering group made up of Parishioners with the majority not being members of the Parish Council.*

*The Plan sets out a series of planning policies that will be used to determine planning applications in the SH Parish area in the period to 2040. The Plan will form part of the development plan for the Parish, alongside the adopted Vale of Aylesbury Local Plan (VALP), which will eventually be replaced by the emerging Local Plan.*

*Neighbourhood Plans provide local communities with the chance to manage the quality of development of their areas. For those of you who have not seen the plan it can be found along with the associated policies on the SH Parish website at*

*[https://www.stokehammond-pc.gov.uk/wp-content/uploads/sites/116/2025/12/Stoke-Hammond-NP\\_Referendum-Plan\\_Dec-2025-Amend-for-examiner-V3.pdf](https://www.stokehammond-pc.gov.uk/wp-content/uploads/sites/116/2025/12/Stoke-Hammond-NP_Referendum-Plan_Dec-2025-Amend-for-examiner-V3.pdf).*

*The journey to date has involved consultations with the local community prior to drafting the plan and a consultation and exhibition in the Community centre subsequent to its development. The plan has been subject to further consultation by Bucks Council and an independent examination to ensure that consultation with the local community has been rigorous and that the plan met with National Planning basic conditions.*

*The examination was completed in December 2025 and the Council gave their approval for the referendum to take place.*

*cont/d over:*

# LUXURY NARROWBOAT HIRE

## ON THE GRAND UNION CANAL



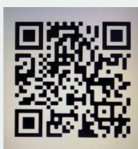
SEE BEDS, BUCKS & HERTS FROM A DIFFERENT PERSPECTIVE



## THE EPIC BOATING COMPANY

### NARROWBOAT 'KINGS LANDING'

Based in Stoke Hammond near Milton Keynes this stunning luxury 60ft narrow boat sleeps up to 6 people and is available to hire for holidays, weekends and mini-breaks throughout the year. Full tuition is given on how to steer, navigate and operate locks before each hire. Contact us for availability and prices or check out our website by scanning the code!



#### CONTACTS US

Phone: 07974 141874

Email: [admin@theepicboatingcompany.co.uk](mailto:admin@theepicboatingcompany.co.uk)

Website: [www.theepicboatingcompany.co.uk](http://www.theepicboatingcompany.co.uk)

### DETAILS



3 Double Beds



Living Area



Kitchen



1 Shower Room



2 x Wc's





## Stoke Hammond and Newton Leys South Neighbourhood Plan Update Cont/d

*The Parish Council request that people now take up their opportunity to register a vote and have the final say on the Neighbourhood Plan. If over 50% of the people who vote are in favour, then the Neighbourhood Plan will become formally part of the Local Plan and as such will carry significant weight in any future planning applications.*

*This has been a long journey involving many parishioners. I would like to extend my appreciation to everyone for the work put in enabling us to reach this final stage.*

**Malcolm Newing**

**Chair Stoke Hammond Neighbourhood Plan Steering Group**

## PLANNING APPLICATION NEWS & UPDATES DEC 2025 – JAN 2026



In this section you will find details of planning applications received, comments made by your Parish Council, and any updates on previous planning applications.

### NEW PLANNING APPLICATIONS:

**PL/25/4636/FA & PL/25/4637/HB– Bridge Farm Cottage, Leighton Road, Stoke Hammond MK17 9DD**

Insertion of a side access door and internal alterations comprising the replacement of study with boot room, relocation of kitchen and dining rooms, removal of oil boiler, installation of underfloor heating and removal of radiators on ground floor and the refurbishment of 2 bathrooms, together with alterations to outbuilding comprising removal of oil tank and installation of solar panels, air source heat pump and EV charging point.

Note: Of the two applications, the first related specifically to planning permission and the other for listed building consent.

Crs resolved they had **NO OBJECTION** to both applications.

### PLANNING UPDATES:

No updates to report at this time, including the result of the appeal hearing held in December for the non-determination of the outline planning application for 290 homes on the site south of Newton Leys (Chadwell Farm).



PROPERTY

your personal realtor

[www.finehomesproperty.co.uk](http://www.finehomesproperty.co.uk)

Proud to support Stoke Hammond and surrounding villages –  
your local estate agent with community at heart.

If you are thinking of selling your home,  
please give Marcus and his team a call for straightforward,  
no obligation advice and a free market appraisal.

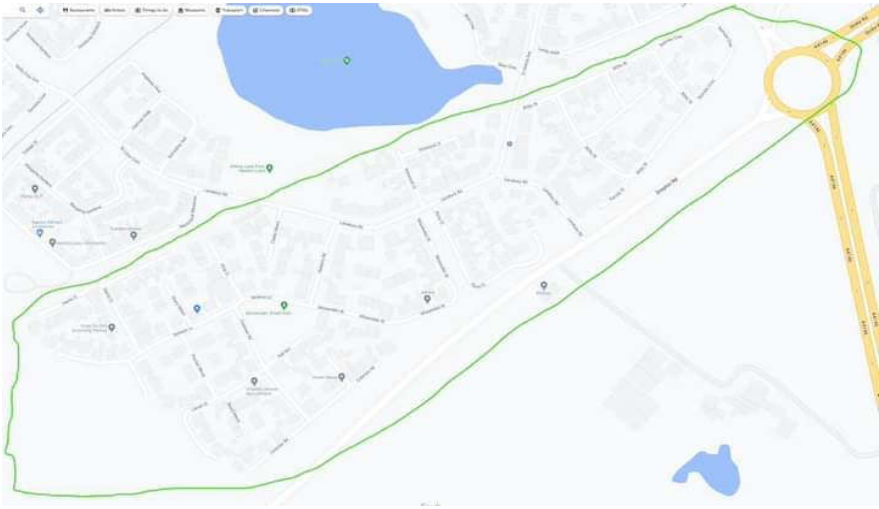


01525 261100



[enquiries@finehomesproperty.co.uk](mailto:enquiries@finehomesproperty.co.uk)

## WELCOME TO THE NEWTON LEYS SOUTH SECTION



### ***Outdoor Gym, Defibrillator and New Community Noticeboard.***

*The Parish Council has approved the installation of a new outdoor gym in Newton Leys, following a formal proposal and presentation to councillors. The scheme was brought forward as part of the Council's wider commitment to improving health, wellbeing and access to free, inclusive recreational facilities for residents of all ages.*

*The proposal set out:*

- The health and wellbeing benefits of accessible outdoor fitness equipment*
- The importance of free-to-use facilities for families and residents on all incomes*
- The role of the gym in supporting active lifestyles locally*
- Its fit with the Parish Council's longer-term ambitions for sport, recreation and green space.*

*Following discussion, the proposal received full support and was approved by councillors. The gym will provide a permanent, accessible community asset that supports everyday physical activity, wellbeing and social connection.*

*Alongside this, the Parish Council will also be installing:*

- A new community noticeboard, improving access to local information and community updates*
- A public access defibrillator, strengthening community safety and emergency preparedness in Newton Leys*

*Together, these investments reflect a clear focus on long-term community health, resilience and quality of life, and form part of the Parish Council's wider programme of once-in-a-generation improvements across the area.*

***Cllrs Mubasshir Ajaz, Craig Champion & David Jonathan***





The Lindens is a privately owned care home, set in the tranquil Buckinghamshire countryside, offering individual care for our long-term residents and those visiting us for respite care. We provide a real 'home from home' experience for all our residents and their visitors.

- ▲ 24 hour expert Care delivered with compassion
- ▲ Well-appointed double & single en-suite rooms with care call systems, televisions, DVD players and internet facilities
- ▲ Meals prepared in house using locally sourced ingredients, catering for individual dietary needs
- ▲ Visitor's centre
- ▲ Tea room available for our residents

The Lindens Residential Care Home,  
Stoke Road, Stoke Hammond, Buckinghamshire, MK17 9BN

☎ info@careatthelindens.co.uk ☎ 01908 371705 🌐 www.careatthelindens.co.uk



The Lindens Residential Care Home

# FESTIVE FUN

December was filled with festive cheer! We enjoyed our annual Christmas party, many heartwarming visits from local school choirs, trips out to the theatre and garden centres beautifully dressed for the season.



Music was at the heart of our celebrations, welcoming a variety of festive entertainers and even a special performance by our very own staff. A wonderful period of togetherness that we treasure as we welcome the New Year.



Among the festivities our typical activities continued, including arts & crafts, cooking and sorting tasks.



To arrange your visit or for further information and guidance when choosing a care home, please call us on 01908 371705

Contact us here:  [info@careatthelindens.co.uk](mailto:info@careatthelindens.co.uk)  01908 371705





# FRESH MILK

Delivered in your village, direct to your doorstep!

Stoke Hammond, Eaton Leys and The Brickhills

## Eaton Bray Dairy

**QUALITY MILK DELIVERY SERVICE**

Eaton Bray Dairy deliver fresh milk and goods direct to your doorstep 3 days a week, 52 weeks a year by 8:00am

Quality groceries supplied by Pecks Farm Shop, Eggington and meats from The Westrope Butchery, Eaton Bray, delivered with your milk.



[www.eatonbraydairy.co.uk](http://www.eatonbraydairy.co.uk) • 07308 300793  
[eatonbraydairy@gmail.com](mailto:eatonbraydairy@gmail.com) • Steve



**sunshine  
blinds**  
Your local blinds specialist



## Sunshine Blinds

Rollers - Vertical - Pleated - Venetian - Roman - Shutters -  
Day & Night - Perfect Fit - Blackout - Velux - Conservatory

**FREE NO OBLIGATIONS QUOTATION CONTACT US TODAY ON**  
**01908 502366 or EMAIL [info@blindsmiltonkeynes.com](mailto:info@blindsmiltonkeynes.com)**

[www.blindsmiltonkeynes.com](http://www.blindsmiltonkeynes.com)



# STOKE HAMMOND SPORTS CLUB - NEWS

As many readers will know, 2026 began under heartbreaking circumstances at Stoke Hammond Sports Club. In the early hours of the morning of Thursday 1<sup>st</sup> January, our clubhouse was broken into. One of the windows was forced open and irreparably damaged. Our games machine was smashed to pieces with the contents stolen and our kitchen was ransacked with paperwork thrown everywhere. More than £1000 was stolen as well as, most upsettingly, the contents of a charity donation box for our friends at the Henry Allen Trust.

To say these events were devastating would be an understatement. I am however pleased to report that due to the continued hard work from all involved with the Sports Club, we are back up and running as normal.

We'd like to thank everyone who has passed on supportive messages and for everyone who have asked how they can help, we would truly appreciate a donation to the Henry Allen Trust to make up for what was stolen from them. And on that note, we'd also like to pass thanks to Stoke Hammond Youth FC who have offered to host their 'Back to the 90s' night in the sports club with some of the profits being donated to the Henry Allen Trust.

Our darts team continue their winter league campaign and have picked up their first win of the season but sit bottom of a very difficult division. We will soon be hosting an open darts tournament at SHSC, please keep an eye on social media for details.

Both of our pool teams have begun their new winter league campaigns. The A team have started strongly with 2 wins from their first 3 games in division 1. The B team have had a more difficult start losing all of their first 4 games in division 2, but progressed through the first round of the Cup competition.

Upcoming events include:

Back to the 90's - Saturday 28<sup>th</sup> February 7pm. Tickets available to purchase through [eventbrite.com](https://www.eventbrite.com)

Disco Bingo - Saturday 21<sup>st</sup> March. Keep an eye on our Facebook page for more information.

*Cont/d over*



# Rawr Store.co.uk

**The Online Destination for High-Quality Raw Food for Your Feline Friends**



High-Quality Raw Food & Treats



We Have Sourced Only the Best Products



Stocked with Excellent UK Brands



Convenient & Easy Online Shopping Experience



Local Delivery Direct to Your Cat Flap



Got Questions? We Have 15+ Years of Knowledge to Call Upon

Visit us at

[www.kittysrawrstore.co.uk](http://www.kittysrawrstore.co.uk)



## THE PLUMBER

Apprenticeship Served 1972 - 78  
City and Guild Qualified

**ON CALL EVERYDAY**

Domestic and Commercial Installations,  
Maintenance and Repair Service.

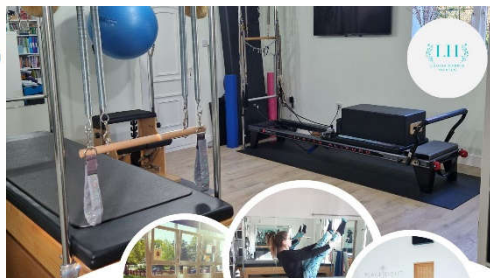
- 💧 Burst/Leaking Pipes
- 💧 Blocked Sinks/Toilets
- 💧 Hot Water Tanks
- 💧 Overflows
- 💧 Showers
- 💧 Radiators and Pumps
- 💧 Garden Taps/Water Butts
- 💧 Fault Finding
- 💧 FREE WRITTEN QUOTE

Call The Plumber Anytime

**07970 317843**

[theplumber@email.com](mailto:theplumber@email.com)

*1<sup>st</sup> aid for your plumbing*



## Pilates for Every Body!

**Pilates Specialist to help you move better and feel better!**

If you're feeling a bit broken and in need of some quality time just for YOU, let Matwork & Studio Pilates help put you back together!

### STOKE HAMMOND - MONDAY

- ✓ 9.15am Intermediate
- ✓ 10.30am Gentle/Osteoporosis
- ✓ 12noon Beginners/Improvers
- ✓ 6pm Beginners/Improvers
- ✓ 7.15pm Intermediate/Mixed

### STUDIO - TUES/WEDS/THURS

- ✓ 1:1 and 2:1 private sessions

### ZOOM - WEDS 9.30am/7.30pm

### SWANBOURNE - FRI 9.40am/11am

[louisa.pilates@gmail.com](mailto:louisa.pilates@gmail.com)  
[www.louisaharris pilates.co.uk](http://www.louisaharris pilates.co.uk)  
**07941 203589**

## *Sports Club News Cont/d*

As ever, we look forward to welcoming members and non-members alike to our clubhouse for a drink and to enjoy live sport on our large screens. We are open weekly, Monday - Wednesday & Friday from 18:30 and Saturday and Sunday from midday.

For any information about hiring the clubhouse or any general questions about SHSC please email [shscsecretary@outlook.com](mailto:shscsecretary@outlook.com) or send us a message through our Facebook page - Stoke Hammond Sports Club.

Tom Tooth, Secretary.

**Phone:** 07494 179277

**Email:** [shscsecretary@outlook.com](mailto:shscsecretary@outlook.com)



*Stoke Hammond Sports Club*  
Bragenham Side  
Stoke Hammond  
MK17 9DB



## Build with peace of mind from plans to dreams.

We are a professional and reliable building company with over 30 years of experience. We have a good reputation and much of our work comes from recommendations. We work closely with customers to ensure their expectations are met and all work is carried out to the highest standard. We undertake a range of high quality building work.



To view all our services please visit our website



EXTENSIONS | NEW BUILDS

HOME IMPROVEMENTS

LOFT + GARAGE CONVERSIONS

PORCHES | GAZEBOS

KITCHEN + BATHROOM INSTALLATIONS

**Please contact us for a free no obligation quote.**

**PAUL 07739 544 772**  
**OFFICE 01525 270 946**

**[p.moore@pmconstructionukltd.com](mailto:p.moore@pmconstructionukltd.com)**

**[WWW.PMCONSTRUCTIONUKLTD.COM](http://WWW.PMCONSTRUCTIONUKLTD.COM)**

# Buttons Pre-School

- Abbeyes, Bletchley
- Blakesley
- Brooklands Farm
- Giffard Park
- Great Linford
- Newton Leys
- Springfield
- Stacey Bushes
- Stewkley
- Stoke Hammond
- Stony Stratford
- Wavendon Gate

All government funding accepted, including 2 year old and 30 hours. Private sessions also available. We offer places to children aged 18 months and over.

Outstanding settings across Milton Keynes, Buckinghamshire and Northamptonshire. Flexible hours including breakfast /afterschool club and wrap around care. Forest School locations and holiday club.. Contact us for details of your nearest pre-school

**Tel: 01908 533404 / 07973 158368**

Email: [enquiries@buttonspreschools.co.uk](mailto:enquiries@buttonspreschools.co.uk)  
[www.buttonspreschools.co.uk](http://www.buttonspreschools.co.uk)







## MAVIS'S QUIZ

In case you missed them, here are the answers to the last quiz to see if you could identify the Celebrity Santas:

1/ Angelina Jolie 2/ Idris Elba  
3/ Madonna 4/ Leonardo DiCaprio 5/ Taylor Swift  
6/ Ed Sheeran 7/ Gemma Collins 8/ Mariah Carey  
9/ Liam Neeson 10/ Rupert Grint



This time, do you recognize and can you name these famous London Streets? To assist we've given you the first letters of the Street name.



1/A\_\_\_\_\_R\_\_\_\_



2/B\_\_\_\_\_S\_\_\_\_\_



3/B\_\_\_\_\_L\_\_\_\_



4/P\_\_\_\_\_R\_\_\_\_



- **SELF STORAGE FACILITY**
- **10FT, 20FT & 40FT UNITS AVAILABLE**
- **SECURE LOCATION, ELECTRIC GATES AND MONITORED CCTV**

**For the best price, call Michael  
07768 870571**



**📍 COMMON FARM, NEWTON ROAD,  
STOKE HAMMOND, MILTON KEYNES, MK17 0EB**





5

5/0 \_\_\_\_\_ S \_\_\_\_\_

6/C \_\_\_\_\_ H \_\_\_\_\_ S \_\_\_\_\_



6

7/L \_\_\_\_\_ H \_\_\_\_\_



7

8/D \_\_\_\_\_ S \_\_\_\_\_



8

9/R \_\_\_\_\_ S \_\_\_\_\_



9

10/S \_\_\_\_\_ R \_\_\_\_\_



10

Best of luck, but to save you having to wait till the next edition, answers can be found at the end of this months 'Grumpy Old Man' feature.



**Charlotte Lyons  
Physiotherapy**

**Leighton Buzzard  
Physiotherapy Clinic  
Open Monday to Saturday  
Expert Clinical Care**

**Providing Treatment for Muscle, Joint and  
Nerve Injuries, Dizziness, Sports Rehabilitation  
and Pre & Post-Op Rehabilitation**

**Book an appointment at:  
Craven House  
Water Lane, Leighton Buzzard  
LU7 1FA**

**[www.charlottelyonsphysiotherapy.com](http://www.charlottelyonsphysiotherapy.com)**

**[charlottelyonsphysio@gmail.com](mailto:charlottelyonsphysio@gmail.com)**

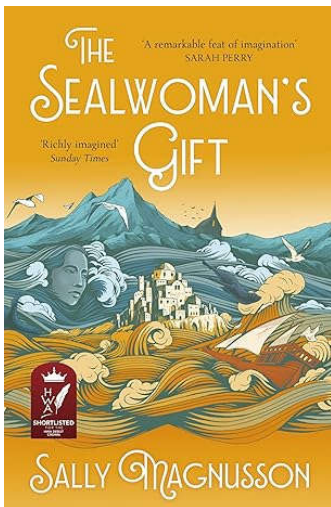
**07446 765945**



## STOKE HAMMOND BOOK CLUB



### **The Sealwoman's Gift** - by Sally Magnusson



This is an unusual book combining facts with fiction. It is set in the 17<sup>th</sup> century in Iceland and Algiers and is based on a true story of a pirate raid on a small island in Iceland when 400 people were captured to be slaves in Algiers. The principal character is Asta – a parson's wife who was taken from her home and husband and what follows creates the story.

The group's reaction was far reaching from really enjoying it, to not being keen and giving up! Most of us had never heard of a slave trade involving Iceland and Algiers so enjoyed the mixture of history and imagination, opening up how people coped with dreadful circumstances. It was described as a page turner (always a good sign), a good analyst of characters, particularly the main character who took to the Algerian culture as a better life than at home – which was thought provoking. Many didn't expect to enjoy it but were won over with only one of us disliking it and giving up.

Conclusion: As the majority of the group found thing to enjoy about it, give it a try.

*Please see over for Book Two:*

# Are you looking for a reliable domestic cleaner?



- Extra Help Milton Keynes offer weekly or fortnightly domestic cleans
- Appointments are allocated on the same day/time with the same cleaner as far as possible for consistency
- All our Helpers are DBS checked and are interviewed and referenced by us

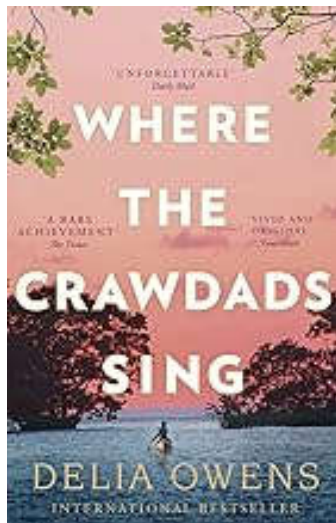
Rates from £19.50 per hour



**EXTRA HELP®**  
a helping hand

Call Alexandra Willingale on  
**Tel: 07533 010482**  
[www.extra-help.co.uk](http://www.extra-help.co.uk)

## Where the Crawdads Sing - by Delia Owens



In 1952 six year old Kya watches her mother leave her abusive, alcoholic husband and waits for her return in vain. One by one her siblings leave and she watches her father burn her mother's belongings. The Barclay Cove residents nickname her 'the marsh girl' but she manages to cope on her own despite the lack of any support from her deranged father.

The groups reactions to the book were similar to one another with a few extra points. Despite feeling it was too long, they were delighted that it had a proper ending rather than just petering out as many recent books had done. Many had read it before and then seen the film and most agreed

that the film did not do the book justice.

Several of us felt very sad for the fate of Kya but still enjoyed it and most became engrossed as the story expanded, and without giving too much away, thought that the trial at the end was very well written. We had actually read it before but the group said they were willing to read it again. They also enjoyed the description of the marsh and nature aspects of the area. Again, a well written page turner.

Next editions first book: **The Great Western Beach** – by Emma Smith

---

## STOKE HAMMOND GARDENING CLUB



**We held our Fish & Chip evening at the end of November with a great turn-out. The Club was pleased to subsidise the meal, tea and coffee and to provide an excellent Speaker -Maria Greenhill, - a gardening expert with an impressive list of talks, who not only gave us innumerable tips and advice but also illustrated her talk with stunning photos which brought it**

**all to life. Everyone enjoyed the fish & Chips and there were loads of compliments for the Speaker so a good time was had by all.**

**Ou next meet-up will be the AGM in March and all the details will be sent to Members in good time.**





**Southlands Autocentre**  
Tyres - Exhausts - Maintenance

**0333 358 0383**

Email: [info@southlandsautocentre.co.uk](mailto:info@southlandsautocentre.co.uk)

Web: [www.southlandsautocentre.co.uk](http://www.southlandsautocentre.co.uk)

**RAC**

Approved Garage

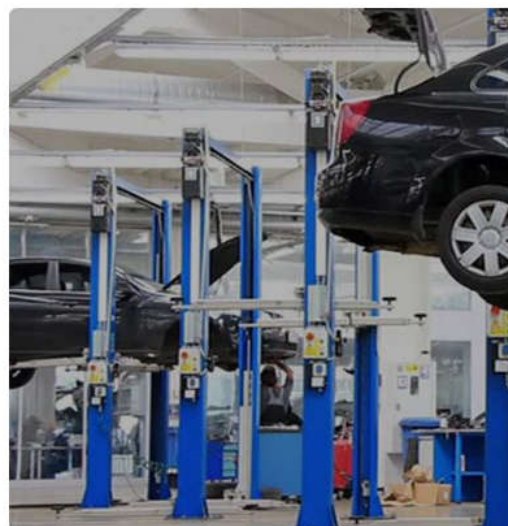


## MOT, SERVICING & TYRES IN STOKE HAMMOND

### PROVIDING STRAIGHTFORWARD QUALITY AUTOMOTIVE CARE

We invest in the latest technologies to provide a high-level of service for our customers in Stoke Hammond and surrounding areas. Our offering includes convenient hassle-free online bookings for MOTs, vehicle servicing and easy to use ordering system for tyres.

Our workshop located in Stoke Hammond is equipped with the latest tools and hi-tech equipment, so vehicles are maintained to exacting manufacturer standards. We believe in providing customers with cost-effective automotive solutions and complete service transparency.



**Southlands Autocentre**  
Unit 1 Southlands Farm  
Stoke Road  
Stoke Hammond  
MK17 9BN

## OUR SERVICES

**We provide our customers with a comprehensive range of automotive services to make sure vehicles are safe on the road.**

- MOT
- Servicing
- Repairs
- Clutch
- Tyres
- Coolant Change
- Exhausts
- Cambelts
- Brake Fluid Change
- Gearbox
- Accident Management
- Locking Wheel Nut Removal
- Air Conditioning
- Batteries
- Brakes & Pads
- Bulbs
- Suspension
- Vehicle Diagnostics
- Wiper Blades
- Body Repairs

**NEED A HAIRCUT?**



**GIVE LES A CALL**

**07723 300576**

**I'm a mobile  
Hairdresser working  
in and around  
Stoke Hammond**

## **Local Carpenter**

- With many years of experience
- Good quality work
- Including doors, kitchens, fitted wardrobes and shelving
- Large or small jobs

You can contact James by phone or email:

Phone : 07970 750599

email : boynjbc@hotmail.com



**JBContractors**

JB Thomas - Proprietor

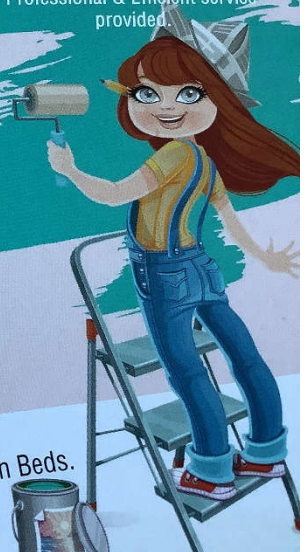
# *J & T Cousins*

**Friendly Female Decorators**

For a Quotation call  
Jenni  
07835 318829  
or  
Tracie  
07852 565817



Walls, ceilings and woodwork painted  
using high quality Dulux paint.  
From one room to a whole house, we  
also offer a repair & small house  
maintenance service.  
Fully insured, Experienced,  
Professional & Efficient service  
provided.



E mail to [JTfemaledecorators@gmail.com](mailto:JTfemaledecorators@gmail.com)  
Locations covered :- Northampton, Bucks & North Beds.

## LADIES THAT LUNCH



Firstly, my apologies ladies, the BBC altered the day, and time for the interview with a presenter. The first day Look East had planned to attend, (a lovely sunny day) and I told you all to appear was cancelled due to a 'logistics' problem at the last minute.

Then, the day they came they rang me up to say they were delayed so I didn't know the exact time

or even day, or whether they were going to come at all to interview us about the non-delivery of post. It was all quite disorganised, and they did have the grace to apologise profusely when they arrived in the pouring rain! Apparently, Sam, the interviewer, told us it does occur frequently.

In fact, I had numerous calls, (poor Terry was manning the telephone) from various producers telling me throughout the week previously who was coming and each time it changed. We were becoming extremely frustrated. We do hope now that the post will get back to some semblance of normality. Finally on this subject our best wishes go to Rory who has had a fall and broken his shoulder. We need you back Rory!

So back to the present the next two Ladies that Lunch will be held on TUESDAY 10<sup>th</sup> February and Tuesday 10<sup>th</sup> March 12.30 in the Sports Club. Usual menu. £3 per person. Jenny will not be there for the March one so if there is anyone that perhaps can give me a hand that would be gratefully received.

The rent that will be paid to the Club to cover electricity and hire will be £30 from now. As you all will be aware the cost of electricity and water has risen quite substantially and now there are about twenty regulars, it only seems right. There will still be enough left over for a deposit for our Christmas meal somewhere. The current amount we have in the kitty is £44 towards it.

If you know you cannot make either or both dates, would you let us know as it makes it easier to know for catering purposes and stops us being concerned if you don't turn up.

Thank you for all your support, we appreciate it.

Hazel and Jenny.

Email: [hmt270404@gmail.com](mailto:hmt270404@gmail.com) 01525 270404

## STOKE HAMMOND COMMUNITY ASSOCIATION

Why not hire the Community Centre or the Meeting Room for your party or business meeting. Discounted rates for residents of Stoke Hammond Parish. To book or discuss your requirements, please call 01525 270151 or alternatively email: [enquiries@shcommunityassociation.co.uk](mailto:enquiries@shcommunityassociation.co.uk)



**TAKE A LOOK AT OUR WEBSITE FOR MORE INFO**  
[www.stokehammondcommunitycentre.com](http://www.stokehammondcommunitycentre.com)







Simply the BEST Carpet & Upholstery  
cleaning you can get

- The most modern, up-to-date equipment
  - Hot Water Extraction
  - Stain Removal Service
- Most of my work is recommendations  
or repeat business
- I carry my own water and remove all waste water
- Commercial, Industrial and residential Carpet  
& Upholstery Cleaning service

*Please Call **Darren Batchelor** for a free quotation on:*

**01525 851 811 or  
Mobile 07790 034818**

Email : [sales@deep-cleaners.co.uk](mailto:sales@deep-cleaners.co.uk)

Website : [deep-cleaners.co.uk](http://deep-cleaners.co.uk)

Approved Prochem Trained

# OAK BARN

- WELLNESS & BEAUTY -

Where Natural Beauty Blooms

iS Clinical Facials  
Accredited Cancer Facials

Microneedling

Peels

Massage

Hot Stone Massage

Waxing

Tinting

Lash + Brow Treatments

Manicures

Pedicures

Elim Pedicures

Gels

Mobile: 07715 473222  
Email: [oakbarnwellnessandbeauty@gmail.com](mailto:oakbarnwellnessandbeauty@gmail.com)



iS CLINICAL

iS cancer care®

### High Ash Cubs & Scouts – Winter & New Year Update



The Scouts would like to say a big thank you to all the villagers who supported our Christmas games and craft stall. Your encouragement and generosity are always hugely appreciated and help us continue to offer great experiences for our young people.



In the run-up to Christmas, the whole group had great fun creating *Wizard of Oz*–themed Christmas trees, which were proudly delivered to the church ready for the Christmas Tree Festival. The creativity (and teamwork!) on display was fantastic.



Our Ancient Egyptian-themed Christmas camp was a real highlight of the term and a great success. Over a packed weekend at a Scout campsite near Chalfont St Peter, Cubs and Scouts cooked flatbreads, date jam and spicy meat skewers over open fires, used compass skills to track down the Pharaoh's treasure, created edible scarabs, and produced some impressive Egyptian artwork.



The programme was crammed with activities including campfires, wide games, crate stacking, rigging climbing, axe throwing and laser tag. The group also ran a Senet (ancient Egyptian board game) tournament and enjoyed cooked breakfasts, homemade pizza and a full Christmas dinner – complete with crackers.



# Prestige

KITCHENS



☎ 07720 374254

@ info@prestigekitchens.co.uk

🌐 www.prestigekitchens.co.uk



We are a bespoke kitchen specialist located in Buckinghamshire. Offering a complete service with tailored kitchen design, timings and project management to suit your budget, space and lifestyle.



- Bespoke design service
- Personalised Installation
- Colour matched cabinets
- Project Managed from start to finish
- Cabinets delivered completely rigid
- 25 year guarantee with all cabinets

10 Roman Field, Stoke Hammond, MK17 9EP



The new term is now back in full swing, with Cubs and Scouts meeting every Thursday evening in Stoke Hammond. Cubs have been practising knots and lashings to build bird feeders in preparation for taking part in the national bird watch, while the Scouts are busy getting ready for this year's District Scout Quiz.

We still have a small number of spaces available for both Cubs and Scouts, so if any local families would like their young people to join the adventure, we'd love to hear from them.



**Dave Pollington (Baloo)**

High Ash Scout Group – MK District

**Group Lead Volunteer**

[dave.pollington@mkscouts.org](mailto:dave.pollington@mkscouts.org)

## PICTURE FRAMING by COUNTRY FRAME



EST 1984

### *The Complete Picture Framing Service*

Expert advice and framing on:  
Prints, Posters Water-Colours, Oil Paintings, 3D objects and all types of needlework

A huge range of mouldings to suit everything  
and over 100 different colours of quality mounting boards

Contact: **Paul Body**

10 Fishweir, off Chapel Square, Stewkley, Leighton Buzzard, LU7 0HB

[www.countryframe.co.uk](http://www.countryframe.co.uk)

T: 01525 • 240163 M: 07771 • 508805

# Sell Your Home

With A Local Estate Agent



**EweMove**

SALES AND LETTINGS

Book Your FREE Home Valuation Today  
01525 300 010 | [EweMove.com](http://EweMove.com)



## *TIME....*

rolls on. And this month it was time to renew my driving licence. No sweat thought I. Three years ago I had a form, ticked a few boxes (still read a number plate, no limbs missing etc. etc..) sent it off and got a new licence back. No charge.

This time no form. "It's very easy to do on line" - they lied! I started on the ubiquitous government form. Name - easy. Green box at the bottom of the page CONTINUE. So far so good. A few more questions which had to be answered. And then - "to carry on you will need your One Login Gov UK app". What? Well I had to open one. Forty five minutes later I had one. In the course of this I had to identify myself. This involved being sent three security code messages. I had to scan a QR square. I had to photograph my passport. I had to show I was not a robot, picking out clocks from beds? Eventually it was decided I was indeed the man I said I was and I could have this app..

The screen went back to the reason I was doing this and in two minutes I was able to tick similar boxes to those requested in earlier years on a form (see opening paragraph).





## Ear Wax Removal

At Clearer Ears we specialise in earwax removal. Our Microsuction ear treatment provides a modern, quick and pain-free way to hear better again.

Our clinic is based in Linford Wood, Milton Keynes.

For those unable to attend clinic, we offer a home visit service.

We also provide bespoke custom made earplugs and earphones. These can be worn comfortably in a variety of different environments.

For more information or to book an appointment online visit:

[www.clearerears.com](http://www.clearerears.com)

Or alternatively give us a call on:

**0330 320 2225 or 07588 105060**



[www.facebook.com/clearerearsUK](https://www.facebook.com/clearerearsUK)

So seeking some relief I chose to renew my garden waste collection service. Send them £62 and they send me a label for my bin. Oh no. Another on-line form. And to complete this I have to have a Bucks CC “my account”. Really?? Well I now have one. Not sure what else I’m going to do with it. At least I didn’t have to photograph my passport.

And to end the week I still have to renew my Blue Badge!!

**Grumpy Old Man**

# Hair by Daniela


Salon quality services in the comfort of your own home!

Get in touch today 07854576610

I am a fully qualified hair stylist with 20 years experience. After spending a few years in various salons specialising in cutting and colouring, I then decided to start my own business venture in freelance hairdressing. I provide a very reliable and friendly service and always look forward to meeting new customers.

**£5 OFF FIRST APPOINTMENT!**

Appointments are available 7 days a week and prices are considerably lower than salons.



**ANSWERS TO MAVIS'S QUIZ:**

- 1 – *Abbey Road*
- 2 – *Baker Street*
- 3 – *Brick Lane*
- 4 – *Portobello Road*
- 5 – *Oxford Street*
- 6 – *Camden High Street*
- 7 – *Ludgate Hill*
- 8 – *Downing Street*
- 9 – *Regent Street*
- 10 – *Saville Row*

# Joyful Tots



Joyful Tots is an inclusive drop-in for parents, carers, those who are pregnant or anyone looking after a baby or preschool child. You can have a natter over a cuppa and babies & toddlers learn to play.

Refreshments (inc. fruit) are included. Your first session is free, then £2 after that.

We don't charge a termly fee because we know what it's like with little ones – you never know how they're feeling till the day.



We've been tucked up indoors during the poor weather, but still enjoying tuff tray play, singing time and our

Craft activities. Our Christmas party was a hit with everyone and for our final session we enjoyed a visit out to Dobbies for a fun soft

play activity. Looking forward to the warmer weather, and to meeting you!

Our session hours are **10am - 11.30am on Friday mornings during (Bucks CC) term times** in the side room at **Stoke Hammond Community Centre**



If you'd like more information, please call Diane 01525 270409 or Ashlynn 07930 240926 or message us on Facebook (Joyful Tots)



# St Luke's Church News



Thank you to all who joined us for our services and events over the Christmas period. We hope you enjoyed them as much as we did. Many thanks to Hazel Turner for organising the Christmas Tree festival and also to Alex and Sophie Nash for leading the Christmas Wreath making workshop in aid of the restoration fund. Pictured above, Carols on the Green and an enthralled youngster at the Christingle service. In January we met our new Bishop – Dave for the first time, at a Confirmation service in our sister church in Great Brickhill. We also enjoyed a Café Church service on a very chilly morning of 18<sup>th</sup> January – at least the bacon butties warmed us up!

## **Church News:**

**Goodbye Rector:** Our Rector John Waller is retiring soon. His final service will be Benefice Holy Communion at Great Brickhill on **Sunday 26th April at 11am**, followed by a Bring and Share lunch in the church (please bring a plate of food to share). If you'd like to attend but don't have transport, please contact Harry or Diane (see below).



**Recruitment of a new Rector:** Due to legal reasons, the recruitment process for the new Rector can only start on 11th May, the day after John Waller officially retires. A team of representatives from across the Benefice are drawing up the Parish Profile and ensuring that everything is ready to advertise the vacancy as soon as possible. If the post is filled in the first round of applications, the earliest the new Rector could start (after giving notice) is October. In the meantime, rest assured, baptisms, weddings and funerals can still be arranged via churchwardens.

## **New Bishop of Oxford Recruitment (Vacancy in See):**



**VACANCY in SEE**

You are invited by the Diocese of Oxford to give your views and opinions about the selection of a new Bishop for the Diocese of Oxford when Bishop Steven retires in July, by completing an anonymous 4 question (10 min) survey which can be found at the following URL link:

<https://oxford.anglican.org/consultation>

If you're not online but want to take the survey, please contact Diane Webber (see below) for a paper copy. **Please note that the consultation finishes on 5<sup>th</sup> Feb.**

**Treasurer Job share:** Our current treasurer has told us that she would be happy to continue in the role for a while if someone could share it with her. If you think you might have the time and skills to volunteer for this, please speak to a churchwarden.



**Great Brickhill Snowdrop Walks:** As usual, St Mary's have invited us to attend their annual Snowdrop Walks which will be held on **Sunday 8<sup>th</sup> and 15<sup>th</sup> February between 2 and 4pm**, with the kind permission of the Duncombe family. Naturalised snowdrops carpet the semi-wooded walk which backs onto the church, and have been there for decades (if not centuries). Cash, card or mobile banking donations may be made for the walk and for the homemade cakes and refreshments served in the church.



### **Church Activities and Events:**

The next **Community Breakfasts** are **14<sup>th</sup> Feb** and **14<sup>th</sup> Mar** at the **Community Centre**. Orders are taken from **8.30 10.30am**. There's a wheelchair ramp, highchairs for babies, we can cater for specific dietary needs and welcome your visitors too! There's no charge, but donations (cash or card) accepted if wished. Food bank donations are also collected here. We are also hoping to offer **Pancakes on Shrove Tuesday 17<sup>th</sup> February**. Further details will be communicated.



**Lent Course:** We are holding Lent courses again across the Benefice, to which everyone is invited. There are 2 duplicate sessions each week (**starting from 24<sup>th</sup> February**), one held on Tuesday lunchtimes in Stoke Hammond which is preceded by a free Lent lunch of soup and a roll, the other is held in various locations across the benefice (differing each week) in the evenings. Don't worry if you can't make all the sessions. This year we are using the Diocesan Lent course: **Discovering Jesus through the Eucharist**. The Diocese also invites you to register for daily emails through its "Come and See" programme during Lent. To register, find out more at <https://www.oxford.anglican.org/come-and-see/>. **Call Harry or Diane for more Lent Course details or check the village fb page.**

LENT

**Prayers:** The prayer group meets twice monthly, praying for the community, individuals, national & international issues. All prayers are in confidence. Prayer requests can be made via cards in the church, at the Community Breakfast or call a churchwarden. (see below)



The **Foodbank** in the church porch is free to all villagers who are welcome to use it **on an ad hoc basis**. If you're in desperate or regular need, phone numbers are provided for more support. There's also a family box containing family and duplicate items. If you can donate to the foodbank financially or in goods, (in date code and no alcohol or aerosols please)

contact Dave or Diane Webber (see below) Items most needed include casseroles/pies, tinned meat/fish, fruit juice, coffee and sugar.



**Toy Swap Shop:** is in the accessible church porch. If you have spare toys, games or **children's** books, please donate them to the Swap Shop. If you don't feel you have anything to swap, you're welcome to borrow a toy/game and return it later.

### **Bible verse of the month:** *from Paul's letter to the Philippians 4 v 4-9:*

*<sup>4</sup> Rejoice in the Lord always. I will say it again: Rejoice! <sup>5</sup> Let your gentleness be evident to all. The Lord is near. <sup>6</sup> Do not be anxious about anything, but in every situation, by prayer and petition, with thanksgiving, present your requests to God. <sup>7</sup> And the peace of God, which transcends all understanding, will guard your hearts and your minds in Christ Jesus. <sup>8</sup> Finally, brothers and sisters, whatever is true, whatever is noble, whatever is right, whatever is pure, whatever is lovely, whatever is admirable—if anything is excellent or praiseworthy—think about such things. <sup>9</sup> Whatever you have learned or received or heard from me, or seen in me—put it into practice. And the God of peace will be with you.*

### **Funeral information:** Crematoria no longer offer a religious service by default:

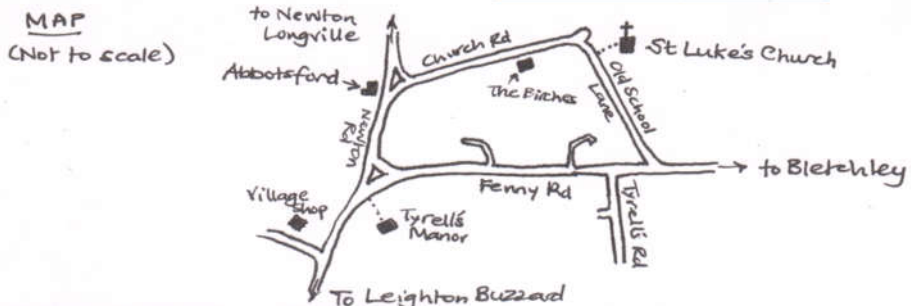


it must be specifically requested. The Rector can conduct a funeral service at a crematorium or at the church to be followed by cremation or burial as you wish. Also, any village resident can be buried or have their ashes buried in the churchyard if wished (for a small fee). Memorial stones must

conform to the new Oxford Diocese regulations. If you'd like more details, please speak to the Rector or Churchwarden Harry Davies.

### **Church Benefice Website:** [www.brickhillchurches.org.uk](http://www.brickhillchurches.org.uk).

St Luke's offers baptisms, weddings and funerals. Please contact the Rector if you'd like to discuss any of these (contact details on the Benefice website). His phone goes straight to an answerphone but he'll reply as soon as he can, or contact a Church-warden. The Rector's times off are Monday, and Friday afternoon. If you have a prayer request or enquiry, please call **Churchwardens: Harry on 07773065271 / Diane on 01525 270409 or [dianejwebber@gmail.com](mailto:dianejwebber@gmail.com)**







## **PCC sets out local policing budget focused on protecting communities and property despite Government under-funding**

**Matthew Barber's spending plans for Thames Valley Police will keep Council Tax rise to just 29p per week for a Band D household**

In setting his local policing budget, Matthew Barber said: "My priorities for Thames Valley Police are to cut crime and catch criminals. As your Police and Crime Commissioner, it is my responsibility to ensure that Thames Valley Police has sufficient resources to effectively prevent and investigate crime, support victims and protect communities.

"Setting the policing budget remains a complex process of balancing priorities and this budget has been particularly difficult.

"Last month, the Government announced the police funding settlement which for Thames Valley Police was £9m less than expected. The funding from central Government barely covers the costs of inflation and pay increases and, in a further announcement just days before setting the budget, the Home Office made clear that they would only fund around 40% of the cost of new officers. This puts more pressure on local taxpayers and will impact the health of the force's finances in the long term."

The budget for Thames Valley Police will be £622m, with almost half of that funding having to be provided by local council taxpayers. The increase of £15 a year in Council Tax (based on a Band D property) will provide essential funding to enable Thames Valley Police to continue to deliver the best service possible to its communities.

"I am acutely aware of the financial pressures households are under, however due to this challenging economic environment, I have made the decision to increase Council Tax contributions by 29p per week for a Band D property. This increase will ensure the force can maintain policing levels, keep communities safe and address the policing priorities of residents identified through my ongoing local crime survey.

"The force continues to make productivity and efficiency improvements in order to balance the local policing budget, with £15m of savings delivered over the last year with a further £16m of savings planned over the coming four years.

"Despite these financial pressures, I am determined that our local police force will continue to grow to support our community.

"Thames Valley Police will deliver 53 more neighbourhood police officers this coming year – on top of the 218 extra officers delivered in the last three years.

"This will be alongside the launch of a dedicated Roads Policing Unit Tasking Team that will work to make our roads safer by bearing down on dangerous and illegal drivers who put others at risk on our roads.

*Cont/d over*

“Through last year’s budget, we have seen a number of improvements including the use of AI-powered technology to offer help, support, advice, and guidance to members of the public via the Thames Valley Police website.

“Residents rightly expect an exceptional service from Thames Valley Police, and my role is to ensure that this year’s policing budget can deliver this by addressing local concerns and priorities and achieving value for money for taxpayers.”

Chief Constable Jason Hogg commented: “The Council Tax precept provides essential additional funding at a time when national police funding remains challenging. However, this investment is not guaranteed, and policing continues to face significant cost pressures and difficult choices as we work to balance our budget responsibly.

“We will continue to identify new ways to improve productivity and efficiency, including through innovation and tech-led policing. By maximising the impact of every pound invested, we can focus our resources where they have the greatest impact for our communities.

“I am grateful to our officers, staff and volunteers for their continued professionalism and commitment as we deliver significant force savings. Their dedication ensures we remain focused on building trust, protecting our communities, fighting crime and supporting victims.”

Over 4,800 residents responded to the ongoing local crime survey (4 January 2025 to 2 January 2026) to help shape the budget priorities.

The budget will be presented to the Police and Crime Panel on Friday 23rd January before being finalised.

Proposed Council Tax bands for 2026/27 are as follows:

Band	2026/27 £	Band	2026/27 £
A	198.85	E	364.56
B	232.00	F	430.85
C	265.14	G	497.13
D	298.28	H	596.56



**Matthew Barber**  
Police & Crime Commissioner  
for Thames Valley

# Local policing budget

**PCC sets out local policing budget focused on protecting communities and property despite Government under-funding**

# MOBILE VEHICLE ACTIVATED SIGN (MVAS) RESULTS FOR LEIGHTON RD 21/11/25 TO 21/01/26

For Project: Leighton Road

Project Notes:

Location/Name:

Report Generated:

Speed Intervals

Time Intervals

Traffic Report From

85th Percentile Speed

85th Percentile Vehicles

Max Speed

Total Vehicles

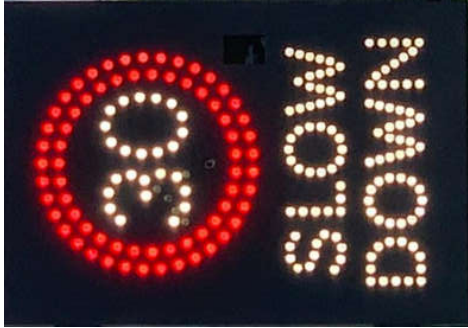
AADT:

Incoming  
22/01/2026  
5 MPH  
10:08:34

Instant  
21/11/2025  
00:00:00  
through  
21/01/2026  
14:59:59

93820  
60 MPH  
on  
02/01/2026  
19:00:00

110376  
1791



## Volumes -

weekly counts

Time	5 Day	7 Day
Average Daily	1900	1779
AM Peak	156	138
PM Peak	156	146

## Speed

Speed Limit:  
35  
36.9  
30.4  
25.0 MPH  
30.61  
to 35.0 MPH  
Average Speed:

Monday	Tuesday	Wednesday	Thursday	Friday	Saturday	Sunday
3911	3723	3746	2653	3717	2955	2708
22.4	20.5	22.0	19.0	21.6	20.8	22.2
38.8	38.7	38.8	38.7	38.7	38.8	38.8
12.0	11.6	11.9	12.2	12.0	13.2	14.1





# News from Buckinghamshire Council

Dear Resident

12 January 2025

I would like to begin by wishing you a Happy New Year! I hope 2026 has started well for you all and that you enjoyed a good Christmas.

## **Cold weather**

I want to start by thanking our gritting teams, who have been out covering hundreds of miles of roads over many consecutive days and nights during the recent cold snap and challenging weather conditions.

It's been particularly difficult as we've seen very damp, and very cold conditions, meaning a lot of ice formed, making for some of the most dangerous conditions to travel in. With approximately 2,100 miles of roads under our responsibility, we obviously cannot and do not grit everywhere – it just isn't physically possible but our teams grit around 44% of the roads in the county, mainly on main routes including all A and B roads. Decisions about when to grit are based on the conditions forecast and the predicted road surface temperatures; for example, on many nights last week we gritted during the day and then completed an additional run during the night because of the particularly damp and cold conditions.

It is important to understand that gritting does not guarantee safety in cold weather. While it helps reduce ice, it cannot completely prevent it, and its effectiveness decreases at very low temperatures. We continue to encourage residents to check conditions before they travel to ensure they can plan the safest and most efficient route. For example, avoid driving on non-gritted, icy, and hilly roads during freezing conditions. In normal circumstances, a shortcut might seem preferable, but during severe weather, it is always safer to stick to main roads wherever possible.

Please remember in weather such as the conditions we saw last week, black ice can form even on treated roads, so everyone needs to take extra care when out and about in those circumstances. All our gritting routes and the full winter plan can be viewed on our website if people want to plan their journey ahead. We know public transport can also face disruption during spells of wintry weather so the advice is to plan in extra time and check your journey before setting out.

## **Council budgets**

As we start the year, I want to share how Buckinghamshire Council is continuing to deliver for residents despite growing financial challenges. Last week, Cabinet agreed our updated Medium Term Financial Plan - which sets out how we'll manage council finances over the coming years. Once again, our proposals meet the legal requirement to balance the books, but this is becoming increasingly difficult and was particularly challenging this year with the biggest change to the central approach to council financing that we've seen for many years.



# MOBILE VEHICLE ACTIVATED SIGN (MVAS) RESULTS FOR FENNY RD 21/11/25 TO 21/01/26

For Project: Fenny Road

Project Notes:

Location/Name:

Report Generated:

Speed Intervals

Time Intervals

Traffic Report From

85th Percentile Speed

85th Percentile Vehicles

Max Speed

Total Vehicles

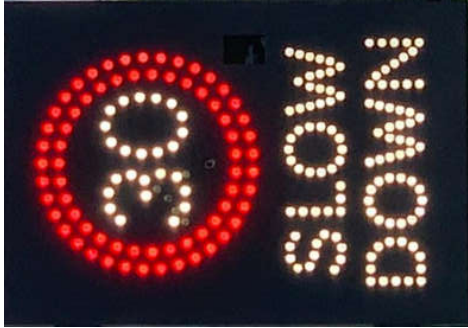
AADT:

Incoming  
22/01/2026  
10:14:01  
5 MPH

Instant  
21/11/2025  
00:00:00  
31.6 MPH  
93414  
60 MPH  
109899  
1784

through  
21/01/2026  
13:59:59

on  
27/11/2025  
11:55:00



## Volumes -

### weekly counts

Time	5 Day	7 Day
Average Daily	1858	1769
AM Peak	132	134
PM Peak	175	165

## Speed

Speed Limit:

85th Percentile Speed:

50th Percentile Speed:

10 MPH Pace Interval:

Average Speed:

to 30.0 MPH

35  
31.6  
25.9  
20.0 MPH  
26.14

Monday	Tuesday	Wednesday	Thursday	Friday	Saturday	Sunday
882	876	942	583	972	822	769
5.0	4.9	5.7	4.6	5.5	5.3	6.3
38.6	38.5	38.8	38.6	38.7	38.6	39.0
9.7	9.8	10.1	10.7	10.0	10.4	11.6

The government's recent 'Fair Funding Review' means Buckinghamshire will lose **£44.4 million** over the next three years as council funds are redistributed by government to other parts of the country. We're also seeing cuts to grants for vulnerable residents, including funding used for our Helping Hand initiative and the cancellation of a planned specialist SEND school. Simply put, these decisions made at a national level mean that Buckinghamshire residents are being taxed more and money that should support local services is being sent elsewhere in the country.

Despite this difficult context, we remain a prudently run and financially stable council; many other local authorities unfortunately are not in that position. It means that having set aside funds to meet our statutory duties, in particular the four key services on which 76% of our funding is spent (Adult Social Care, Children's Services, Home to School Transport and Temporary Accommodation), we can still prioritise services and investment into areas that we know residents value the most, including:

- **Weekly waste collections** – continuing when other councils are cutting back
- **Transport investment** – £220 million for roads maintenance and infrastructure
- **Support for vulnerable residents** – including an extra £3 million to reduce waiting times for Education, Health and Care Plans

We're also proposing investing £49.7 million in SEND provision, £28.1 million to tackle housing and homelessness, £46.8 million in waste and recycling, and £11.6 million on climate change and flood management.

These budget plans are now being scrutinised at a series of meetings this week before being considered by full council at the end of February.

### **New SEND unit in Iver**

You may have seen recent news coverage about our plans for a new eight-place specialist SEND unit at Iver Junior School. These units by their very nature cater for small numbers of students who need bespoke support to thrive at school and it's a model we're operating at other schools too, such as The Nest at Juniper Hill School in Flackwell Heath. It reflects our wider work to expand SEND places in the county – a really big focus for us in the coming year. We've already created 328 new SEND places, through expanding existing special schools and opening new SEND units at mainstream schools like this one. Nearly 300 more SEND places are in development over the next three years, and we have also recently invested a further £3 million directly towards reducing wait times for Education and Healthcare Plans for SEND students.

### **Corporate parenting and fostering**

Arguably one of the most important duties of this council is to support children who come into our care and this week we also agreed a five year 'Corporate Parenting Strategy' and action plan. This work is critical and is designed to make sure any child who comes into our care receives the same care, support and opportunities as any child would expect from a good parent. We also agreed our Placement and Homes Strategy for Children and Young People which outlines how every child in care in Buckinghamshire can access the right home, at the right time, with the right support, as close as possible to their community, school and family.

A key part of this work is through the council's fostering service. Being placed in a loving and safe foster home is almost always the best outcome for any child who comes into our care and we are working very hard to recruit more foster carers to increase capacity.

We are committed to recognising and supporting our foster carers so they can provide the best possible care for children in our care. To achieve this, we offer a comprehensive package of support and benefits, including 24/7 assistance, competitive allowance payments of up to £577 per week per child, and access to a strong fostering community with experienced carers



# MOBILE VEHICLE ACTIVATED SIGN (MVAS) RESULTS FOR NEWTON RD 21/11/25 TO 21/01/26

For Project:

Newton Road

Project Notes:

Location/Name:

22/01/2026  
10:17:45

Report Generated:

Speed Intervals

5 MPH

Time Intervals

Instant

Traffic Report From

21/11/2025

through

21/01/2026

14:59:59

85th Percentile Speed

29.1 MPH

85th Percentile Vehicles

18246

Max Speed

50 MPH

on

30/11/2025

17:45:00

Total Vehicles

21466

AAOT:

348



## Volumes -

### weekly counts

Time	5 Day	7 Day
Average Daily	378	345
AM Peak	36	29
PM Peak	37	33

## Speed

Speed Limit:

35

85th Percentile Speed:

29.1

50th Percentile Speed:

24.5

10 MPH Pace Interval:

30.0 MPH

Average Speed:

24.37

Monday	Tuesday	Wednesday	Thursday	Friday	Saturday	Sunday
31	28	24	21	23	18	24
0.9	0.8	0.7	0.8	0.7	0.7	1.1
38.0	37.7	37.9	38.2	37.9	38.1	38.5
16.6	16.2	15.8	17.1	16.6	17.9	18.4

nearby. We know that many foster carers balance fostering with other employment so this January we are also heavily focussed on encouraging more local businesses to become 'Fostering Friendly' and to sign up to Buckinghamshire's Fostering Friendly scheme. We are encouraging businesses of all sizes to join the scheme. Support they can offer foster carers can take many forms, from introducing a Fostering Friendly HR policy to offering discounts.

If your business or place of work would like to support Foster with Bucks and take part in our scheme, please sign up to our **Business Brunch Launch on 29 January at The Gateway, Aylesbury** to learn more. Book your place now on our website Events page.

More widely, if you are interested in finding out more about becoming a foster carer, please visit our Foster with Bucks webpage.

Yours,



**Steven Broadbent**

Leader - Buckinghamshire Council



### • GET IN TOUCH •

**ONLINE**  
Click here for our  
contact form



**TELEPHONE**  
Call us on  
0300 131 6000\*

\* Phone lines are open Monday to Thursday 9am-5:30pm, Friday 9am-5pm. Phone lines are closed on bank holidays.

To keep up to date with the latest news from Buckinghamshire Council, please follow us on social media:



Buckinghamshire Council

The Gateway, Gatehouse Road, Aylesbury, HP19 8FF

[buckinghamshire.gov.uk](http://buckinghamshire.gov.uk)

## YOUR NEWTON LONGVILLE WARD COUNCILLORS



Cllr Caroline Cornell Buckinghamshire Council

Email: [caroline.cornell@buckinghamshire.gov.uk](mailto:caroline.cornell@buckinghamshire.gov.uk)

Mobile: 07976 853643



Cllr Jilly Jordan Buckinghamshire Council

Email: [jilly.jordan@buckinghamshire.gov.uk](mailto:jilly.jordan@buckinghamshire.gov.uk)

Mobile: 07740 308468

# YOUR NEIGHBOURHOOD POLICING TEAM

## Wing and Ivinghoe



**Inspector  
James Davies**



**Sergeant  
David Kuttner**



**Police Constable  
Dionne Edwards**



**Police Constable  
Jake Bye**



**PCSO  
Mike Coker**



**PCSO  
Tina Hobson**

The neighbourhood policing team work with our local communities to make Aylesbury Vale safer

To contact your local Team call  
**101** or email them on

[WingNHPT@thamesvalley.police.uk](mailto:WingNHPT@thamesvalley.police.uk)

You can also report an incident on our website:

[www.thamesvalley.police.uk](http://www.thamesvalley.police.uk)

**In an emergency always call 999**

**Visit us on Facebook at [www.facebook.com/TVPAYlesburyVale](https://www.facebook.com/TVPAYlesburyVale)**



## VILLAGE DIARY

Tuesday 3 <sup>rd</sup> February	Parish Council Meeting – Community Centre – 19.30
Thursday 5 <sup>th</sup> February	Neighbourhood Plan Referendum – Community Centre – 07.00 - 22.00
Saturday 14 <sup>th</sup> February	Community Breakfast – Community Centre 08.30 – 10.30
Tuesday 3 <sup>rd</sup> March	Parish Council Meeting – Newton Leys Pavilion – 19.30
Saturday 14 <sup>th</sup> March	Community Breakfast – Community Centre 08.30 – 10.30
Sunday 22 <sup>nd</sup> March	Wombles Litter Pick – Outside Community Centre – 10.00
Tuesday 7 <sup>th</sup> April	Parish Council Meeting – Community Centre – 19.30
Saturday 11 <sup>th</sup> April	Community Breakfast – Community Centre – 08.30 – 10.30

*For Church dates/times please see the 'Church Services' section*

### ORGANISATIONS THAT USE THE COMMUNITY CENTRE

#### High Ash Scouts, Cubs (Beavers)

Thursday 17.30 – 21.30hrs  
Contact: Dave Pollington 01525 270864  
[dave.pollington@mkscouts.org](mailto:dave.pollington@mkscouts.org)  
[www.scouts.org.uk](http://www.scouts.org.uk)

#### Louisa Harris Pilates

Monday day/evening  
Contact: 07941 203589  
[Louisa.pilates@gmail.com](mailto:Louisa.pilates@gmail.com)  
[www.louisaharrisilates.co.uk](http://www.louisaharrisilates.co.uk)

#### Chair Yoga

Wednesday 9.30 & 14.30 hrs  
Contact: Sally Peers 07766 756199  
[sallyyogalondon@gmail.com](mailto:sallyyogalondon@gmail.com)

#### Buttons Pre-School

Monday – Friday 09.00 – 15.00hrs  
Contact: 01908 533404  
[enquiries@buttonspreschools.co.uk](mailto:enquiries@buttonspreschools.co.uk)  
[www.buttonspreschools.co.uk](http://www.buttonspreschools.co.uk)

#### Joyful Tots

Friday 10.00 – 11.30hrs  
Contact: Diane 01525 270409  
or Linda 07971 134497

**To Hire the Hall please telephone 01525 270151 or e-mail: [enquiries@shcommunityassociation.co.uk](mailto:enquiries@shcommunityassociation.co.uk)**

### SH NEWS – ADVERTISING RATES

For 6 bimonthly editions: FULL Page - **£95.00** HALF Page - **£55.00** QTR Page - **£35.00**  
**To upgrade to full colour on inside front, inside rear or outside rear cover (subject to availability), additional per edition cost:**

**FULL Page – plus £16.00 HALF Page - plus £11.00**

**Note: Upgrading to full colour is on a per edition basis, not a commitment for 6 editions**

Buckinghamshire Council	0300-131-6000
Aylesbury Vale Area – Buckinghamshire Council	01296-585858
Registrar ( <i>Births &amp; Deaths</i> )	01296-383005
Registrar ( <i>Marriages</i> )	01296-382481
Fly-Tipping on Roads	01296-382416
Social Care Services ( <i>Emergency Duty</i> )	0800-999-7677
MK General Hospital	01908-660033
Stoke Mandeville Hospital	01296-315000
Luton & Dunstable Hospital	01582-491122
SH Gardening Club ( <i>Eileen Curry</i> )	01525-270858
Clerk to the Parish Council ( <i>Kelly Harris</i> )	07793-131810
Parish Council Chairman ( <i>Mubasshir Ajaz</i> )	07775 932925
Newton Longville Ward Councillor ( <i>Caroline Cornell</i> )	07976 853643
Newton Longville Ward Councillor ( <i>Jilly Jordan</i> )	07740 308468
MP – Bucks & Bletchley ( <i>Callum Anderson</i> )	<a href="mailto:callum.anderson.mp@parliament.uk">callum.anderson.mp@parliament.uk</a>
PCSO Tina Hobson	07779 586565
High Ash School	01525-261620
St Luke's Church ( <i>Revd John Waller</i> )	01525-261062
St Luke's Church Warden ( <i>Diane Webber</i> )	01525-270409
St Luke's Church Warden ( <i>Harry Davies</i> )	01234-822780
Stewkley Methodist Church ( <i>Mary Cottrell</i> )	01296 688741

**Police non-emergency number 101**

**NHS Helpline non-emergency number 111**



## EDITORS NOTE

Christmas and the New Year celebrations seem an age ago now, but I trust you all out there had a great time and enjoyed meeting up with family and friends.

With the postal situation in this area being so dire of late, many of you may still have not or only just received your polling cards for the Neighbourhood Plan Referendum, hence the reason for using this edition's front cover to remind you all, as to how important it is for you to vote on Thursday 5<sup>th</sup> February.

Still, on the subject of the recent postal shenanigans, how many of you saw BBC's Look East on the evening of the 15<sup>th</sup> January, where there was a report from Stoke Hammond and our very own Hazel and Terry Turner plus Malcolm Newing were interviewed and gave their views on the appalling state of our postal service. The majority of us did the very day before receive a mountain of mail, dating back many weeks, which we all suspect was prompted by the fact that Royal Mail got wind of this upcoming News report!

May I please have copy for the April/May 2026 issue by the **20<sup>th</sup> March**

Greg Noble, The Birches, Church Road, Stoke Hammond. MK17 9BP

01525 270744 E-mail: [gregnoble1980@aol.com](mailto:gregnoble1980@aol.com)



## WASTE COLLECTION DATES

**STOKE HAMMOND VILLAGE & NEWTON LEYS SOUTH**

Waste Bin: 	Recycling Bin:  Paper, glass, cardboard, plastics, cartons, cans & tins	Food Waste Bin:  Non-recyclable or compostable.	Garden Waste Bin: 
Wednesday 4 Feb		Wednesday 4 Feb	Wednesday 4 Feb
	Wednesday 11 Feb	Wednesday 11 Feb	
Wednesday 18 Feb		Wednesday 18 Feb	Wednesday 18 Feb
	Wednesday 25 Feb	Wednesday 25 Feb	
Wednesday 4 Mar		Wednesday 4 Mar	Wednesday 4 Mar
	Wednesday 18 Mar	Wednesday 18 Mar	
Wednesday 25 Mar		Wednesday 25 Mar	Wednesday 25 Mar
	Wednesday 1 April	Wednesday 1 April	
Thursday 9 April		Wednesday 9 April	Wednesday 9 April



# Where fun, friends & learning begin!



Secure, healthy, friendly, fun  
environment for children 12  
months to 5 years old, right  
on your doorstep!

Newton Longville Pre-School is found  
on the grounds of Newton Longville  
Church of England School. We offer  
affordable, friendly and fun based  
childcare for your little learners.  
Open term time, with our core hours  
9am to 3pm which can be Government  
funded. We also offer an early drop off  
8:30am and late pick up at 4pm which  
are privately paid sessions.



## 15 & 30 hour funded sessions available!



**FOR MORE  
INFO OR TO  
BOOK A VISIT**

[newtonlongvillepreschool.com](http://newtonlongvillepreschool.com)  
[newtonlongvillepreschool2024@outlook.com](mailto:newtonlongvillepreschool2024@outlook.com)  
**01908 641 706**

**STEWKLEY PLAYERS PRESENTS**

**25TH - 28TH MARCH 2026**

**8PM STEWKLEY VILLAGE HALL  
(DOORS OPEN & LICENSED BAR FROM 7.30PM)**

**KEN LUDWIG'S**



**MIDSUMMER/JERSEY IS THE HILARIOUS HIGH-OCTANE RE-TELLING OF SHAKESPEARE'S A MIDSUMMER NIGHT'S DREAM SET ON THE BOARDWALK OF A SEASIDE TOWN IN MODERN-DAY NEW JERSEY.**

**TICKETS ON SALE 2<sup>ND</sup> MARCH**

**ONLINE:  
TICKETSOURCE.CO.UK/STEWKLEY-PLAYERS**

**PHONE:  
0333 666 3366  
£8.50 INCL BOOKING FEE**

*QUERIES: STEWKLEYPLAYERS@GMAIL.COM*



**THIS AMATEUR PRODUCTION OF "KEN LUDWIG'S  
MIDSUMMER/JERSEY" IS PRESENTED BY ARRANGEMENT  
WITH CONCORD THEATRICALS LTD. ON BEHALF OF SAMUEL  
FRENCH LTD. WWW.CONCORDTHEATRICALS.CO.UK**

