

# SH & NLS NEWS

Stoke Hammond & Newton Leys South

INSIDE THIS EDITION:

PARISH COUNCIL NEWS

NEWS FROM NEWTON LEYS SOUTH

G.O.M.

MAVIS'S QUIZ

CHURCH NEWS

BUCKS NEWS & MUCH MORE

APRIL/MAY 2022

[www.stokehammondpc.com](http://www.stokehammondpc.com)

## THE QUEEN'S PLATINUM JUBILEE 2022



STOKE HAMMOND

4 DAYS OF EVENTS

2ND - 5TH JUNE 2022



Let's make it a time to remember!



Please see back cover for more details

## CHURCH SERVICE DATES TO MAY 2022

### APRIL

- 3<sup>rd</sup> April: 9.30am Café Church, St Luke's, Stoke Hammond – D & DW  
10<sup>th</sup> April: 11.00am PALM SUNDAY Family Service, St Luke's, Stoke Hammond – JW  
11<sup>th</sup> April: 7.30pm Said Compline Service, St Mary Magdalene's, Little Brickhill – JH  
12<sup>th</sup> April: 7.30pm Said Compline Service, St Mary the Virgin, Great Brickhill – JW  
13<sup>th</sup> April: 7.30pm Said Compline Service, All Saints, Bow Brickhill - JW  
14<sup>th</sup> April: 7.30pm MAUNDY THURSDAY Said Holy Communion, St Luke's, Stoke Hammond - JW  
15<sup>th</sup> April: 9.30am GOOD FRIDAY Hymns & Reading, All Saints, Bow Brickhill  
15<sup>th</sup> April: 2.00pm GOOD FRIDAY Church open for prayer, St Luke's, Stoke Hammond  
17<sup>th</sup> April: 9.30am EASTER DAY Holy Communion, St Luke's, Stoke Hammond – JW  
24<sup>th</sup> April: 10.00am LOW SUNDAY Benefice Holy Communion, St Luke's, Stoke Hammond - JW

### MAY (Provisional Dates)

- 1<sup>st</sup> May: 10.00am Benefice Holy Communion, St Mary the Virgin, Great Brickhill - JW  
8<sup>th</sup> May: 11.00am Family Service, St Luke's, Stoke Hammond - JW  
15<sup>th</sup> May: 6.00pm Evensong followed by Annual Vestry and Parochial Church Meeting at St Luke's, Stoke Hammond – JW  
22<sup>nd</sup> May: 9.30am Holy Communion, St Luke's, Stoke Hammond - JW  
29<sup>th</sup> May: 9.30am Benefice Holy Communion, St Mary Magdalene's, Little Brickhill - JW

**Note: Compline is a standard evening service liturgy used in the church of England.  
"Said" means there is no music or singing. For the APCM all are welcome.**

**D & DW – Dave & Diane Webber**

**JH – Jeremy Hopkinson**

**JW – Rev John Waller**



## STOKE HAMMOND COMMUNITY CENTRE



Serving the community

### Wed June 8<sup>th</sup> 7.30pm at the Community Centre, Bragenham Side

The Stoke Hammond Community Association who manage the day-to-day operation of your Community Centre, cordially invite you to join us for our Annual General Meeting. We will review the last years activities and our plans for the future. We will of course welcome any suggestions from you as to how we can improve the centre and its facilities plus any future events that you might like the centre to host.

You are invited to join us for light refreshments after the meeting.

**The Association currently has a vacancy for a Treasurer. Should you be interested in this voluntary role, please email us no later than the 25<sup>th</sup> May at [enquiries@shcommunityassociation.co.uk](mailto:enquiries@shcommunityassociation.co.uk)**

**[www.stokehammondcommunitycentre.com](http://www.stokehammondcommunitycentre.com)**

## PARISH COUNCIL NEWS



As you will see from front and rear covers to this edition of the SH & NLS News, the Parish Council along with other village based organisations are determined to mark the momentous occasion that is the Queen's Platinum Jubilee, with four days of celebrations that all of Stoke Hammond, young and old can enjoy. This is a once in a lifetime event and we want to make the Jubilee Weekend very special, engaging and fun filled. Over the coming weeks we will communicate more details and look out for the above logo, that will be used to highlight updates and news in a variety of media solutions to ensure you are all kept informed. But if you have your own ideas that you feel can further add to the experience and enjoyment then please do communicate this to us via the following email address [jubilee@stokehammondpc.com](mailto:jubilee@stokehammondpc.com)

The recent storms, particularly 'Eunice' did their very best to create havoc, but thankfully Stoke Hammond survived the worst, yes there were a few trees blown over, including one on Old School Lane, but no major damage was caused. One casualty though was the old water pump on the corner of Newton and Church Road. But in a rather timely fashion, your PC had already decided to replace what was a rather bland pump housing for a new more ornate cast replica item, so Eunice has just hastened things a little. But Eunice did rip off part of the roofing to the PC owned garages on Bragenham Side, and quotations are being sought for the cost of repair.

A question we are always being asked is as to whether we have any news regarding The Dolphin PH, and the answer is very much Yes and No. You may recall we wrote to the current owners and in March they invited Councillors for a tour of the site, which dramatically illustrated how much money has been spent in bringing The Dolphin up to date, but sadly they also advised us that despite much interest from prospective buyers, it still remains unsold.

Speeding through the village is a subject matter often raised and at the March PC meeting, the council agreed to purchase 3 new solar powered speed signs, that will display a

# Greenstripe

The lawncare specialists



BOOK YOUR  
FIRST  
TREATMENT  
WITH  
**50%**  
OFF



- ✓ LAWN TREATMENTS
- ✓ AERATION
- ✓ SCARIFICATION
- ✓ TOTAL RENOVATION
- ✓ TURFING



- ✓ FRIENDLY SERVICE
- ✓ EXPERT KNOWLEDGE
- ✓ FREE QUOTATIONS
- ✓ LOCAL SPECIALISTS
- ✓ FAMILY RUN



PUT YOUR  
LAWN  
IN THE PICTURE  
#LawnsByGreenstripe

@greenstripemkLtd



EXPERIENCE THE  
GREENSTRIPE DIFFERENCE

warning to make motorists aware if they are exceeding the 30mph limit. The signs, that will be located at the three entrances to the village, namely Leighton Road, Fenny Road and the Newton Road, will also data log all vehicle speeds and numbers, and this information can then be downloaded via encoded Bluetooth. This material will be stored by the PC and hopefully will prove a useful tool if in the future it is deemed that further speed restriction measures are required.

In what was a very rare occurrence, there were no planning applications to consider at the February PC meeting, but at the March meeting there was a planning application (22/00613/APP) that was causing considerable concern, namely the proposal to increase the number of homes to be built on the land at the end of Brook Farm Close adjacent to the railway line from 33 to 42. Your PC resolved to object to this planning application the full details of our objection can be found within the 'Planning Section' of this publication, but aside from the conclusion that this increase in homes would be too great for the size of the plot, this could also be a sort of test case for the credibility and strength of the now adopted Vale of Aylesbury Local Plan (VALP). The VALP stated that taking into account recently built new homes and those already approved by planning including the aforementioned 33 homes, that Stoke Hammond had met its housing growth needs until 2033, so in theory this new application should be declined on that basis alone.

Some of you may have seen on our notice board or via Facebook that a Casual Councillor vacancy has arisen due to resignation in February of Councillor Damian Willingale. The closing date for applicants has passed, and we will learn who has applied at the April PC meeting, and the current Council will then decide on the successful applicant with an offer to join the PC. We should just mention that although no longer a Councillor, Damian Willingale is still very much involved in the evolving Neighbourhood Plan (NLP) which he spearheaded whilst on the PC and is an active member of the recently setup NLP Steering Group. This group has many tasks to perform before reporting back to the PC but things are very much underway now on the NLP which will have a very important part to play in determining the future of the Parish of Stoke Hammond.

Other items in brief from the February PC were:

- With the resignation of Cllr Willingale, the remaining 6 Cllrs and the clerk were joined by 5 members of the public with an apology for absence from our Unitary Ward Cllr Phil Gomm.
- Following a recent closure of the SH Bypass where with no clear instructional signage, traffic was left very much to their own devices as to which routes to take, the PC clerk had approached the police about the matter. They agreed there was some sense in getting Police protocol updated when they needed to close the bypass, requesting that traffic be diverted towards Tommy's car wash roundabout and into the village that way, rather than having articulated lorries coming down Newton Road. However, in reality, they could not promise to make this happen as too many variables would not allow them to ensure every officer is aware or has the local knowledge.
- The planters to the village entrance gates are in a poor state of repair, so quotations are to be sought for the cost of replacing same.

# MADISONS HAIR SALON




**Madisons**

Hair & Beauty

17 Greenway  
Newton Longville  
Milton Keynes  
MK17 0AP  
01908 632 050



 Madisons Hair Salon

 @madisonhairandbeauty



- Investigations into the possible reinstatement of the village pond to the top of Church Road are still ongoing. A visit from a representative of the Newt Preservation Partnership which could have possibly fully funded its restoration and annual maintenance cost, concluded that the site was outside of their remit. They also suggested that other specialist consultants would need to be engaged to undertake further tests for soil and water quality.
- It was brought to the Councils attention that there had been a large amount of fly tipping down Dorcas Lane. There is also always litter, particularly McDonalds wrappers being deposited on the concrete path on Newton Road adjacent to the bypass. It was suggested a further litter bin might be needed at this location, but the clerk would first contact McDonalds about the issue.

Then to the March PC meeting, with the other main points being:

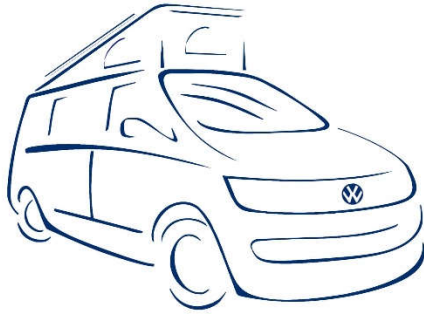
- With one Cllr off with Covid, the other 5 Cllrs and PC Clerk were pleased to be joined after several missed meetings by our Unitary Ward Cllr Phil Gomm, who advised he would now try to attend all future meetings. There was also 7 members of the public in attendance.
- The long ongoing issue of the potholes to Tyrells Gardens was raised. There was some doubt raised by Cllr Gomm that the repairs were on the LAT Capital Works Programme, despite the clerk having an email from LAT confirming same. Cllr Gomm stated he would look into the matter.
- A Red Maple tree has now been ordered for The Green, and this will be planted in the next 4/5 weeks. There will be a ceremonial mock planting of the tree in June to coincide with Queen's Green Canopy Campaign running in conjunction with the Platinum Jubilee celebrations.
- Following last month's complaints of litter at the top of the concrete path on Newton Road, McDonalds have kindly agreed to supply us with a litter bin, free of charge, and this will be added to our normal weekly village bin emptying schedule.
- A parishioner mentioned the state of the village drains and asked when something would be done about them. Cllr Gomm advised that with the heavy rain of late, it has highlighted some of the very bad drains across the Ward. The Clerk stated that all of the blocked drains had already been reported to the LAT. Cllr Gomm advised he would follow up the matter.
- The poor state of the markings to the zebra crossing was mentioned by a parishioner and as to why the lights had not been upgraded to brighter and more efficient LED types. The Clerk was to take the matter up with Highways.

The April PC Meeting will be held at the Community Centre, Bragenham Side on Tuesday 5<sup>th</sup> April commencing 7.30pm with the May meeting being the same time and place on May 3<sup>rd</sup>.



**Should you wish to contact your Parish Council, please do so via our clerk:**

Joanna Simonds, Hollymill Cottage, Newton Road, Stoke Hammond, Bucks. MK17 9DE  
 Tel: 07818 016108 [clerk.stokehammondpc@gmail.com](mailto:clerk.stokehammondpc@gmail.com) [www.stokehammondpc.com](http://www.stokehammondpc.com)



# MD Campers

## Campervan Hire

A DIFFERENT ADVENTURE EVERY TIME

VW Campervan hire straight from the garage you can trust ➡

Hire available from £90.00 per night  
Hire from as little as 2 days, depending on availability.

Fully equipped with all you need for your glamping experience.  
Heating, Gas Hob, Fridge, Sink, 5-seater, 4 birth.



**Tel:** 07877 835236

**Email:** [hello@mdcampers.co.uk](mailto:hello@mdcampers.co.uk)

**Facebook:** [www.facebook.com/MDCampers](http://www.facebook.com/MDCampers)

**Instagram:** [mdcampers\\_campervanhire](https://www.instagram.com/mdcampers_campervanhire)

**Website:** [www.mdcampers.co.uk](http://www.mdcampers.co.uk)





# MD Autocare

## Vehicle Maintenance

Stoke Hammond's local Independent Garage.

Keeping the cars of Stoke Hammond & surrounding areas on the road since 2001

Available for:

Servicing & Repairs

Mots

Diagnostics

Air Conditioning

All Makes & Models

Fitting is free for all Bulbs, Blades & Batteries purchased from us  
(Standard fitment only)

You can find us up the single-track road, to the left of the Village Shop.

Mark & Jo

MD Autocare, The Workshop, Olde Bell Close  
Stoke Hammond, MK17 9BZ

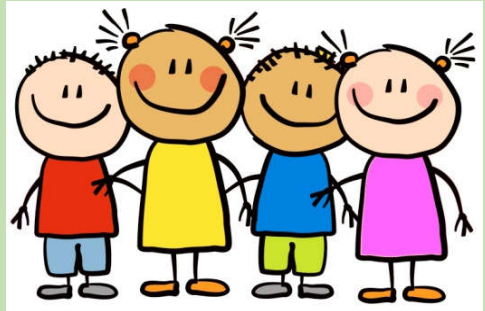
Tel: 01525 270278

**Email:** [mdautocare@gmail.com](mailto:mdautocare@gmail.com)

**Facebook:** [www.facebook.com/MDAutocare](http://www.facebook.com/MDAutocare)

# Joyful Tots

- Joyful Tots is an inclusive session for parents, carers, or anyone looking after a baby or preschool child. Friendly mums are there to chat with and share problems, advice and information



- We are delighted to announce that Bethan has agreed to join the team! She lives in the village and has a 6 month old baby
- **WE ARE REOPENING** by holding a **Free Taster Session** on **Friday 8<sup>th</sup> April** which will be followed up with sessions running from **29<sup>th</sup> April**
- We are resuming our regular session time: **10 – 11.30am** on Friday mornings during term times in the side room at **Stoke Hammond Community Centre**
- There will be age appropriate toys and activities and refreshments are provided for adults and children
- If you'd like more information or you think you would like to come along but can't make the date, please call Jacklen 07897 487657 or Diane 01525 270409 or message us on Facebook (Joyful Tots)



## Roads

A few people have had problems with pot-holes in the village. Falling in whilst walking – smacking suspension on cars etc. A couple of holes in my local road have had pebbles and stones added to reduce the depth. And so when I heard on the radio that Rod Stewart had taken it into his own hands to repair his road I thought that would be what he had done – and his notoriety had brought it to Media attention. When I saw it on TV however he had a dumper truck and substantial quantities of gravel etc. Amazing what you can do with a few quid! Well good on him.

So staying on roads I have to say I have not yet read and inwardly digested the new Highway Code. In principle however it appears to follow the “sail gives way to steam” arrangement. Highway users are listed in priority of vulnerability: pedestrians-horse riders- cyclists- motor bikes -cars-buses- juggernauts. Everyone is expected to give preference to the next user down the list. This is fine in principle but going back to the sailing analogy – if you are taking a yacht across the channel and are being born down on by a zillion ton oil tanker, don’t rely on it taking avoiding action.

Some items seem quite sensible: look before opening your car door (cyclists), don’t cut up cyclists at junctions, pass horses slowly and give them a good wide berth. Most good drivers will have been doing this anyway but having it in writing....



## WALK OUR WOOFERS

**Walk Our Woofers** is a local dog walking service, providing safe, fun and stimulating walkies for your furry best friend, either from your home or in local countryside. First-aid trained, insured and DBS-checked.

Call **07977 155164**

or email me at:

[steve@walkourwoofers.co.uk](mailto:steve@walkourwoofers.co.uk)



**07977 155164**

[www.walkourwoofers.co.uk](http://www.walkourwoofers.co.uk)

## LAPTOP & COMPUTER

Server, Printer, Apple, Setup, Repairs, Data recovery, Internet, Wireless, Network, Virus infection, Home/Office computer problems. Services from £40.

Your local IT support, 7 days services, we visit you

No Fix - No Fee

Qualified, Experienced

[PClaprepairs@gmail.com](mailto:PClaprepairs@gmail.com)

01525 306316 – 07925 338435

## Local Carpenter

- With many years of experience
- Good quality work
- Including doors, kitchens, fitted wardrobes and shelving
- Large or small jobs

You can contact James on these numbers:

Phone : 07970 750599

Home : 01525 270400



## JBContractors

JB Thomas - Proprietor

## NEED A HAIRCUT?



GIVE LES A CALL

**07723 300576**

I'm a mobile  
Hairdresser working  
in and around  
Stoke Hammond

I'm not quite so sure about the "cyclists ride towards the middle of the road" to make yourself more obvious to other road users. I think the major benefit of this will be for cyclists to avoid all the crumbling and decaying road edges around our villages!

### Grumpy Old Man

**\*\* Please see the 'Editor's Note' section on Page 46, reference the Grumpy Old Man article in the February/March 22 edition \*\***

---

## STOKE HAMMOND GARDENING CLUB



We were delighted to hold our first AGM for two years at the Sports Club on Thursday 10th March. After such a long gap we had no idea if it would be well attended but thanks to the usual help of the Sports Club staff, we set up plenty of chairs and waited. Well, we were not disappointed. All our loyal members from way past arrived plus new people wanting to join. The official business was then conducted - the present committee had agreed to stand for another year and was duly voted in. The Chairman took the opportunity to introduce the members of the committee individually explaining the roles of each one. The Treasurer and Secretary gave their reports and everyone was assured that after a couple of lean years we would do our best to organise some fun events for 2022. Memberships were renewed and everyone was reminded that in line with the Constitution they had until April 7th to join or re-join.

Next our Speaker for the evening was introduced - Mr. Peter Lickorish whose talk was entitled 'Gardening in the Future'. It was the most interesting, well presented and a well illustrated talk, and everyone was complimentary about it saying how much they had enjoyed it. Peter invited questions and after some chatting and light refreshments the raffle was drawn and a successful evening ended at around 9.30pm.

BUCKINGHAMSHIRE

LOTTERY

STOKE HAMMOND COMMUNITY CENTRE



Serving the community

**WIN**  
A  
**£1000**  
**B&Q**  
**Gift**  
**Card**

**SUPPORT US**  
**Through Thick & Thin**

- Help give our fundraising a boost
- Tickets cost just £1 a week
- Win up to £25,000
- Play now and you could win a £1,000 B&Q voucher

PLAY NOW:

Go to [www.buckinghamshirelottery.co.uk](http://www.buckinghamshirelottery.co.uk)  
and search for: Stoke



Supporters must be 16 years of age or older. See website for Terms & conditions. Enter by 23<sup>rd</sup> April 2022





# News from Buckinghamshire Council

18 March 2022

## helping hand for Ukraine

Dear Resident,

I wanted to update you on the response to the situation in Ukraine, and specifically on the 'Homes for Ukraine' visa scheme that the Government announced this week and we have just received further details about.

The updated 'Homes for Ukraine' visa scheme opens today (Friday 18 March) for visa applications from Ukrainians who have named people in the UK willing to sponsor them. This scheme allows Ukrainian refugees to find safety in the UK through sponsorship from the public. Details of the visa scheme are available at [Apply for a visa under the Ukraine Sponsorship Scheme \(Homes for Ukraine\)](#)

Key elements include the following:

- The visa application can be completed by either the Ukrainian refugee or the sponsors but will need to include details of both.
- The sponsor will then be contacted by the Council who will carry out a basic check of the suitability of the home and also undertake a safeguarding check.
- Accommodation should be safe, warm and provide adequate access to bathroom and kitchen facilities. No rent should be charged, and it should be offered for at least six months.
- Once the visa is granted, the refugees are free to travel to join their sponsor.
- Everyone who is matched will also have to do a DBS check which the Council will organise.
- There will be a 'thank you' payment of £350 per month which will be paid by the Council to households taking in refugees once the appropriate checks have been completed. Payments will be made monthly in arrears.
- The Council will receive £10,500 per refugee, per year to ensure the support and services can be provided locally. The Council will support the sponsors in welcoming the refugees and ensuring that they are able to access services such as health, education and benefits as quickly as possible.

This is separate from the UK Family Scheme which is designed to enable Ukrainian applicants to join their family members in the UK [Apply for a Ukraine Family Scheme visa](#)

# STOKE HAMMOND LOCAL STORE & POST OFFICE



**Opening Hours:**

**Mon-Sat: 6.30am till 9.00pm**

**Sun: 8.00am till 9.00pm**



## Our Products:

**"A FRIENDLY WELCOME GUARANTEED"**

News & Magazines	Beers, Wines & Spirits	Pet Food
Confectionery & Snacks	Soft Drinks	Health & Beauty Products
Bread (inc. Turney's) & Cakes	Tobacco & Cigarettes	Frozen Food & Ice Creams
Dairy Products	Groceries	Greeting Cards
Medicines	Baby Food & other Products	Household Sundries
Sandwiches & Ready Meals	Fruit & Vegetables	Stationary Items

## Other Services:

- \* Pay-point/Top up services will be available.      \* Cash machine will be available.
- \* Photocopying      \* Pies & Coffee will be introduced in the morning.



In addition, people wanting to be sponsors who do not know anyone personally fleeing Ukraine can also record their interest in being a sponsor. To register an interest in being a sponsor please visit [Homes for Ukraine – Homes for Ukraine – Local Sponsorship Scheme for Ukraine](#) .

The Council has also formed a local strategic partnership so we can be in the best possible position across the whole of Buckinghamshire to co-ordinate a strong response to whatever scenario presents. It means we have representatives from accommodation, education, health, safeguarding and other services all aligned to support any arrivals as best we can.



**helpinghand**  
for Ukraine

Of course, most people will not be in a position to open their homes to a Ukrainian family but still want to help in the best way they can. As I said last time, we've launched the council's own '[Helping Hand for Ukraine](#)' programme as another means of providing support for any arrivals into Buckinghamshire. For now, the best way to help is to make monetary donations via the main Disasters Emergency Committee Fund, details of which are on the Helping Hand page – while the situation is so

grave and chaotic in Ukraine and the surrounding countries this is the best way to get help and items channelled to where they're needed most.


As ever, the support and solidarity being shown in communities across Buckinghamshire in response to this dreadful situation is heartening and I thank you for all you are doing in the various ways you're helping.

**Martin Tett** – Leader of Buckinghamshire Council

A blue banner with a white background containing contact information. It features a globe icon for online contact and a mobile phone icon for telephone contact. The text includes 'GET IN TOUCH', 'ONLINE Click here for our contact form', and 'TELEPHONE Call us on 0300 131 6000\*'. A small asterisked note at the bottom states: '\* Phone lines are open Monday to Thursday 9am-5:30pm, Friday 9am-5pm. Phone lines are closed on bank holidays.'

• GET IN TOUCH •

 **ONLINE**  
Click here for our contact form

 **TELEPHONE**  
Call us on 0300 131 6000\*

\* Phone lines are open Monday to Thursday 9am-5:30pm, Friday 9am-5pm. Phone lines are closed on bank holidays.

To keep up to date with the latest news from Buckinghamshire Council, please follow us on social media:



Buckinghamshire Council  
The Gateway, Gatehouse Road, Aylesbury, HP19 8FF  
[buckinghamshire.gov.uk](http://buckinghamshire.gov.uk)

# DEEP CLEAN

## Simply the BEST Carpet & Upholstery cleaning you can get

- The most modern, up-to-date equipment
  - Hot Water Extraction
  - Stain Removal Service
- Most of my work is recommendations or repeat business
- I carry my own water and remove all waste water
- Commercial, Industrial and residential Carpet & Upholstery Cleaning service

*Please Call Darren Batchelor for a free quotation on:*

**01525 851 811 or  
Mobile 07790 034818**

Email : [sales@deep-cleaners.co.uk](mailto:sales@deep-cleaners.co.uk)  
Website : [deep-cleaners.co.uk](http://deep-cleaners.co.uk)

Approved Prochem Trained

## SUPPORTING OUR LOCAL AREA

To spread some cheer this year, Fine Homes Property has teamed up with the Brickhill Bistro to bring you some delicious treats.

If you are thinking of selling your home, book a free market appraisal with us and you will receive a golden ticket which entitles you to a selected afternoon tea or one of Kathryn's delicious cakes.

As well as this, when we sell your home we will donate 5% of our commission to a project in your village or a charity of your choice.



**FINEHOMESPROPERTY**

*Your personal realtor*

**Marcus Feinhols**

**Marcus Feinhols MNAEA  
Managing Director**



01525 261100



[marcus@finehomesproperty.co.uk](mailto:marcus@finehomesproperty.co.uk)



[www.finehomesproperty.co.uk](http://www.finehomesproperty.co.uk)



## NEWS FROM NEWTON LEYS SOUTH (NLS)



It looks as though Spring May finally have arrived, daffodils are starting to bloom and you can see the young spring lambs bouncing about in the local fields, you can also hear the occasional lawn mower going, a job we all love to hate.

You will see the news that the Parish are holding several events for the Queens Platinum jubilee in June in Stoke Hammond. There will be four days of events, catering for all ages and needs, it should be fun, so hopefully we will see lots of you attending the event.

There is also the neighbourhood plan taking place which will take in the whole parish and look at the needs of the parish as a whole. We are now around 37% of the wider parish, so our views on shaping the plan should be heard, and again I ask for volunteers to assist and join the stakeholder groups so that the residents on NL get a voice on what should be happening locally.

I hear on a Sunday night that the “boy racers” are back on the A4146, we can hear it loudly from the middle of the development so I am sure those that live near the roundabout and the din they can hear must be terrible. I would encourage anybody who is affected by the noise to report it to the Thames Valley Police who will send out a car to stop the racing. I will also bring it up at the next PC meeting.

I believe that we have an otter in Willow Lake, although I have not seen it, there have been some photos of the otter on the local Facebook page. Hopefully we will see it on one of our walks.

Thank you to those that took part in the litter pick earlier this month organized by the Reverend, it was good to see residents ‘wombling’ and collecting the litter.

I hope you all have a great Easter and enjoy the time off with family and loved ones.

Councillor Stephen McNally

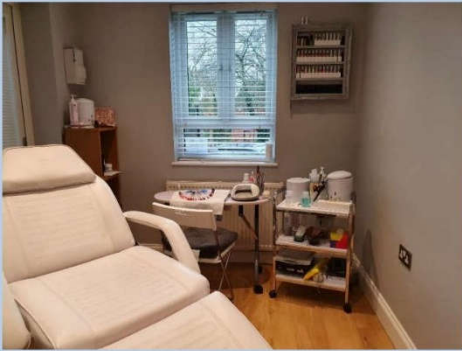
## Donna Saggerson

07715 553146

**Beauty & Waxing Specialist**

Home based salon in the village with 16 yrs experience

- Waxing
  - Manicures
  - Pedicures
  - Gel nails
  - Eyelash / Eyebrow Tint\*
- \*24hr patch test required prior to treatment



## Louisa Harris Pilates

Learn to move better to feel better!

PRIVATE PILATES EQUIPMENT STUDIO



- Reformer
- Cadillac
- Chair
- Matwork
- Private 1:1s & 2:1s
- Specialist teacher
- Outdoor matwork
- Zoom classes

MK & LEIGHTON BUZZARD STUDIO  
Nr. Stoke Hammond and Great Brickhill  
[louisa.pilates@gmail.com](mailto:louisa.pilates@gmail.com)  
[www.louisaharrisPilates.co.uk](http://www.louisaharrisPilates.co.uk)

Plus Matwork classes at Place Eight Wellness,  
Swanbourne - [www.placeeightwellness.co.uk](http://www.placeeightwellness.co.uk)

## Mutleys Dog Grooming



Located in Stoke Hammond

Call Tina on 07725 404714

- Pick up and drop off service can be arranged
- Nail clipping
- Specialised breed stripping
- All grooming requirements catered for
- Evening and weekends appointments available



THE BRICKHILL  
FLOWER CO.

Local florist based  
in Great Brickhill

Offering beautiful blooms for:

- Weddings
- Funerals
- Events
- Special Occasions

Please get in touch:  
[Hello@thebrickhillflowercompany.co.uk](mailto:Hello@thebrickhillflowercompany.co.uk)

Also find me on  
Facebook & Instagram  
[@thebrickhillflowercompany](https://www.facebook.com/thebrickhillflowercompany)





# MAVIS'S QUIZ

In case you missed them, here are the answers to the last quiz where you had to name the organizations from their logos.

- (1) UNITED NATIONS
- (2) WORLD TRADE ORGANISATION
- (3) SPOTIFY (4) STARBUCKS
- (5) APPLE (6) NIKE (7) AUDI (8) CHANEL
- (9) BRITISH PETROLEUM (10) WORLD WILDLIFE FUND



*Slight change this month and something probably more suited to some of our older generation, in that can you name the characters who said these classic catchphrases and the title of the British TV Sitcom in which they appeared. To assist we've given you the first letters of the character's name and then that of the TV Show.*

1/ "DON'T PANIC" L \_ \_ \_ C \_ \_ \_ J \_ \_ \_  
D \_ \_ \_ A \_ \_ \_

2/ "I DON'T BELIEVE IT" V \_ \_ \_ M \_ \_ \_  
O \_ \_ F \_ \_ I \_ T \_ G \_ \_ \_

3/ "I HAVE A CUNNING PLAN" B \_ \_ \_ \_  
B \_ \_ \_ \_ \_ \_

4/ "I'M FREE" M \_ H \_ \_ \_ \_  
A \_ \_ Y \_ \_ B \_ \_ \_ S \_ \_ \_

5/ "OOH BETTY" F \_ \_ \_ S \_ \_ \_  
S \_ \_ M \_ \_ \_ D \_ H \_ \_ E \_ \_

6/ "LOVELY JUBBLY" D \_ B \_ \_  
O \_ \_ F \_ \_ A \_ H \_ \_ \_

7/ "SILLY OLD MOO" A \_ G \_ \_ \_ \_  
T \_ \_ D \_ \_ U \_ D \_ P \_ \_ \_

8/ "YOU DIRTY OLD MAN" H \_ \_ S \_ \_ \_  
S \_ \_ \_ A \_ S \_ \_

9/ "LISTEN VERY CAREFULLY I SHALL ONLY SAY THIS ONCE" M \_ \_ \_ \_ D \_ \_ \_  
A \_ \_ A \_ \_ \_

10/ "MANUEL" B \_ \_ F \_ \_ \_  
F \_ \_ \_ T \_ \_ \_

*Best of luck, but to save you having to wait till the next edition, answers can be found on page 45 Village Diary*



# THE CHURCH OF ENGLAND

In the next few months children will be sitting GCSE exams and the following might help with anyone taking RE but some might also find it quite

interesting to learn the structure of the Church of England.

**Structure of the Church of England:** The Church of England is organised into two provinces; each led by an archbishop (Canterbury for the Southern Province and York for the Northern). These two provinces cover England, the Isle of Man, the Channel Islands, the Isles of Scilly and even a small part of Wales; not to mention continental Europe. Each province is built from dioceses. There are 43 in England and the Diocese in Europe has clergy and congregations in the rest of Europe, Morocco, Turkey and the Asian countries of the former Soviet Union.

Each diocese (except Europe) is divided into parishes. The parish is the heart of the Church of England. Each parish is overseen by a parish priest (usually called a vicar or rector). From ancient times through to today, they, and their bishop, are responsible for the 'cure of souls' in their parish. That includes everyone. And this explains why parish priests are so involved with the key issues and problems affecting the whole community.

Her Majesty the Queen is the Supreme Governor of the Church of England, and she also has a unique and special relationship with the Church of Scotland, which is a Free Church. In the Church of England she appoints archbishops, bishops and deans of cathedrals on the advice of the Prime Minister. The two archbishops and 24 senior bishops sit in the House of Lords, making a major contribution to Parliament's work.

The Church of England is episcopally led (there are 108 bishops) and synodically governed. The General Synod is elected from the laity and clergy of each diocese and meets in London or York at least twice annually to consider legislation for the good of the Church.

The Archbishops' Council was established in 1999 *to co-ordinate, promote, aid and further the mission of the Church of England*. It is composed of 19 members and 7 directors whose task is to give a clear sense of direction to the Church nationally and support the Church locally.

The Archbishop of Canterbury is senior bishop of the Anglican Communion and the Southern Province.

The Archbishop of York is senior bishop of the Province of York or the northern dioceses of England.

Diocesan Bishops are the chief pastors of their dioceses. (Dioceses are usually a group of counties.)

Area or Suffragan Bishops assist the diocesan bishops. (The area is usually a single county.)

Archdeacon is the "legal officer" of the Archdeaconry or 'area', usually a county. The bishop directs him/her to promote better relations. His/her work is responding to a theology of order.

Archdeaconry - Archdeacons are subdivided into “deaneries” and overseen by an Area Dean (often called Rural Dean) who usually also have parish responsibilities.

Deaneries are again subdivided into “parishes” overseen by a rector, vicar or priest-in-charge. Today many ‘vicars’ have more than one parish. (E.g. our vicar is in charge of four.)

A ‘team vicar’ is merely one “vicar” in a large team or group: e.g. High Wycombe (which has about 7 churches in a team overseen by the rector.)

Curate – usually a priest in training.

Assistant Curate – usually an ordained priest assisting the rector/vicar in his/her work in a parish.

LLM (Licensed Lay Minister) - In the Diocese of Oxford, Readers are known as Licensed Lay Ministers. Readers are lay people in the Church of England from all walks of life who are called by God, theologically trained and licensed by the Church to preach, teach, lead worship and assist in pastoral, evangelistic and liturgical work. - See more at:

<http://www.oxford.anglican.org/mission-ministry/lay-ministry/licensed-lay-ministry/#sthash.SGqaiiPb.dpuf>

Parish – often a village or small town. (E.g. we reside in the Parish of Stoke Hammond. Our Benefice, or group, is the United Benefice of The Brickhills with Stoke Hammond)

Cathedrals:

The Church's cathedrals in England make an immense contribution to the country's historic environment. They are physical and social landmarks. They are often the largest and most architecturally complex buildings in their area, and they may also be the oldest.

Most importantly, cathedrals remain in use for their original purpose. Through their presence, worship and varied work, they reach out to their local and wider communities in many ways.

The Church's cathedrals in England make an immense contribution to the country's historic environment. They are physical and social landmarks. They are often the largest and most architecturally complex buildings in their area, and they may also be the oldest.

Most importantly, cathedrals remain in use for their original purpose. Through their presence, worship and varied work, they reach out to their local and wider communities in many ways.

As the seat of the bishop and the mother church, a cathedral is also a focal point in its diocese. Cathedrals also attract pilgrims and visitors, offering education and hospitality, and excellence in music, art and liturgy. The cathedral building and its precinct can be the largest public spaces in a locality, offering a variety of events, a setting for civic occasions and, often, an oasis of calm in a busy city centre.

On the Association of English Cathedrals website you will find links to the websites of cathedrals around the country and an interactive map to find out more about these incredible buildings.

# Stoke Hammond Service Centre Bletchley

UNIT D, LYON ROAD, BLETCHLEY MK1 1EX

Tel: 01908 371110 & 01525 279009

Tyres ★ Exhausts ★ Servicing ★ MOTs ★ Diagnostics ★ Clutch ★ Engine

Established in 2006 and now one of the most accredited service centres around.



- ★ Free local collection and return.
- ★ Very competitive prices.
- ★ RAC inspected - 100%.
- ★ AA Select Garage.
- ★ MOT Testing Station.
- ★ Trading Standards, CAB, CVTS Approved.
- ★ All makes of car catered for.
- ★ Pleasant waiting area with hot drinks machine.





# THE Lindens



**The Lindens is a privately owned care home, set in the tranquil Buckinghamshire countryside, offering individual care for our long-term residents and those visiting us for respite care. We provide a real 'home from home' experience for all our residents and their visitors.**

- ***24 Hour expert care delivered with compassion***
- ***Well-appointed double & single en-suite rooms with care call systems, televisions, DVD players and Internet facilities***
- ***Meals prepared in house using locally sourced ingredients, catering for individual dietary needs***
- ***Visitor's centre***
- ***Tea room available for our residents***

The Lindens Residential Care Home, Stoke Road,  
Stoke Hammond, Buckinghamshire, MK17 9BN

Tel: 01908 371705 E-Mail: [info@careatthelindens.co.uk](mailto:info@careatthelindens.co.uk)

Web: [www.careatthelindens.co.uk](http://www.careatthelindens.co.uk)

# THE Lindens

Here at The Lindens we have been starting to think about the Queen's forthcoming Platinum Jubilee. Buckinghamshire Council have gifted us two oak saplings, each with their own commemorative plaque. These baby trees have now been planted in our Meadow Gardens which can be viewed from our Meadow and Garden Wings as well as from our main lounge, patio and gardens. As they grow, they will provide a lovely symbol and enhance the planting already featured in this area including our majestic olive tree.



Our residents have also been thinking ahead to Easter and have been enjoying making pancakes, choosing topping and eating the delicious results.

Our Kitchen Team have started planning for our Easter celebrations which will include a special Easter Day feast.

In the meantime, the next monthly disco for our residents will be a St Patrick's Day themed event including the usual disco lights and the ever popular disco bubbles machine!



If you are interested in a career in Care or in developing your skills further, give us a call we will be pleased to hear from you.

Wishing you all a happy and healthy Easter from us all here at The Lindens,

*Michael Hannelly*

**Director**

**The Lindens**

**Stoke Road, Stoke Hammond, Buckinghamshire, MK17 9BN. Tel 01908 371705**

**Email: [info@careatthelindens.co.uk](mailto:info@careatthelindens.co.uk) Web: [www.careatthelindens.co.uk](http://www.careatthelindens.co.uk)**



## March 2022 Great Brickhill's WI Meeting:

I am a member of Great Brickhill WI. It is an active WI with members of all ages from many surrounding villages, the Brickhills, Heath and Reach, Wing, Stoke Hammond and Leighton Buzzard to name just a few.

We had an inspiring talk from Sally Searle this month about a trip to Kenya more than 10 years ago which changed her life. WI members were touched to hear her story. Sally has been involved with the Little Faces School in Kenya since 2011. She is Chair Trustee of the Bedfordshire Rotary Club and has dedicated her time and money-raising efforts which among many things included a fire walk or as we better know it - walking over hot coals! It was all worth it though as the money raised has gone into building a new purpose-built school. We learnt that children in the region are so poor that the schools can only accept a certain percentage and the local children are so desperate to get in that they try and hang over the school fences to listen to the lessons. We were able to see, through video clips, the school being built and the children, who by the age of nine are bilingual, singing in English. WI members were also moved to watch the children singing to their parents thanking them for sending them to school! Sally proudly informed us that on her one memorable visit to the new school - which will include a supply of clean, drinking water, a health centre and a roof garden for vegetables - that she was made a guest of honour at the village supper. The distinction soon wore off slightly when because of this title she was offered a cockerels' claw to eat! Sally told the chief of the village the honour should be his and she was able to avoid eating it! We were saw the craftwork of other WI groups who have knitted blankets and cuddly toys for children who are upset during the day. The motto for the school is to make children understand all are equal and welcome.

Sally was thanked for her truly amazing talk and members said how inspired they were by her dedication and energy.

Following Sally's talk, we were all pleased to learn that one of our members, Jackie Stimpson, had raised £1.050 for Willen Hospice (in memory of Celia Hall). Many members enjoyed a catch up over refreshments and hot drinks at her Coffee/Cake Morning.

**Forthcoming events:** GBWI has a varied 2022 programme including a trip to Chenies Manor and Gardens on 27<sup>th</sup> April, a trip to the Paralympic Heritage Site in Aylesbury and Kew Gardens is on the agenda for the Autumn.

**Want to come along?** As always, we are looking forward to welcoming any women wishing to come along to any of our meetings. **No fee is charged** but visitors are welcome to donate towards the running of our WI. An annual membership is £44 per year which works out to be £3.66 a meeting!

**Why not join us on Wednesday, 13<sup>th</sup> April at 7.30 pm in the Great Brickhill Parish Hall:**

**Next month's speaker: Jo Cowan – Benefits of Magnetics on Health**

Jo will talk about the surprising health benefits of magnets, a natural remedy to help with many ailments including menopause, migraines, backache, arthritis, period pain, sleep, lack of energy and so much more. She will also be showing a range of magnetic health jewellery and offering advice so you can get all the potential health benefits of magnetism in a beautiful piece of jewellery.

**If you would like to join, or need more information, please contact our Secretary, Amanda, on GB: 261476 or email: [gbrickhillwi@gmail.com](mailto:gbrickhillwi@gmail.com). Or myself Hazel Turner [hmt404@hotmail.co.uk](mailto:hmt404@hotmail.co.uk) . You can also find us on Facebook: Great Brickhill Women's Institute - GBWI.**

**Thanks, from Hazel**



**Sunshine Blinds**  
DOMESTIC AND COMMERCIAL  
Rollers - Vertical- Pleated - Venetian - Roman - Shutters -  
Day & Night - Perfect Fit  
**FREE NO OBLIGATIONS QUOTATION CONTACT US TODAY ON**  
**01908 502366 or EMAIL [info@blindsmiltonkeynes.com](mailto:info@blindsmiltonkeynes.com)**  
[www.blindsmiltonkeynes.com](http://www.blindsmiltonkeynes.com)



sunshine  
blinds  
Your local blinds specialist



5 YEARS  
FREE  
GUARANTEE

# Buttons Pre-School

- \* Abbeys, Bletchley
- \* Brooklands Farm
- \* Giffard Park
- \* Great Linford

- \* Newton Leys
- \* Stoke Hammond
- \* Stacey Bushes
- \* Wolverton
- \* Wavendon Gate

15 and 30 hours funded sessions.  
Children from 18 months,  
private sessions also available.

Sites across Milton Keynes and Bucks, flexible hours including breakfast club, afterschool club and Wrap around care. Forest school locations. Contact us for details of your nearest pre-school.

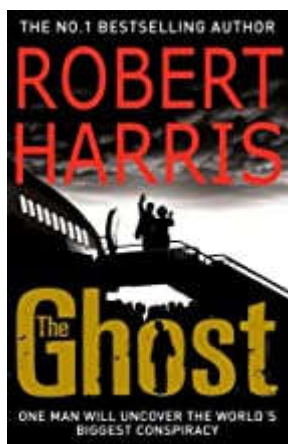
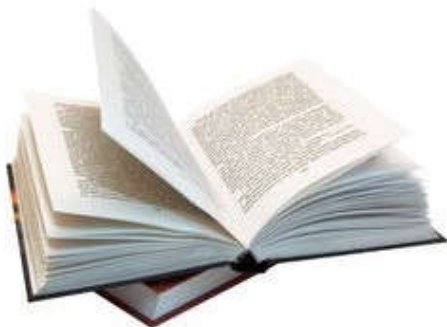
**Tel: (01525) 270501 / 07973 158368**

**Email: [enquiries@buttonspreschools.co.uk](mailto:enquiries@buttonspreschools.co.uk)**

**[www.buttonspreschools.co.uk](http://www.buttonspreschools.co.uk)**



## STOKE HAMMOND BOOK CLUB



### **The Ghosts** - by Robert Harris

'One man will uncover the world's biggest conspiracy'

A new ghost writer gets the job of writing the memoirs of Adam Lang former Prime Minister after the mysterious death of his original ghost writer. His research reveals all sorts of twists and turns and as time goes on, he wonders if his predecessor knew a dark secret about Lang which ultimately cost him his life.

The book received the 'thumbs up' from all members of the group although for different reasons. It was mentioned that the first part was enjoyable and the writing was good but the standard was not felt to have been sustained throughout and although anxious to read the eventual outcome it was not altogether a very satisfying experience. However, others were interested to learn more about actual 'ghost writing' not realising how common it was. Just to add to the interest everyone soon realised that it was more than slightly based on a certain real-life ex Prime Minister and his wife. We wondered why there was so much emphasis on the previous ghost writer but it kept up a good pace and most of us thought that the ending was rather clever. Apparently a film has been made of the book but, although no-one had seen it, we were not convinced that it was a suitable candidate for a film despite being described as 'not a great film but one which will keep you with it to the very end.'

*Conclusion: different, interesting, a page turner.*



## Ear Wax Removal

At Clearer Ears we specialise in earwax removal. Our Microsuction ear treatment provides a modern, quick and pain-free way to hear better again.

Our clinic is based in Linford Wood, Milton Keynes.

For those unable to attend clinic, we offer a home visit service.

We also provide bespoke custom made earplugs and earphones. These can be worn comfortably in a variety of different environments.

For more information or to book an appointment online visit:

[www.clearerears.com](http://www.clearerears.com)

Or alternatively give us a call on:

**0330 320 2225 or 07588 105060**

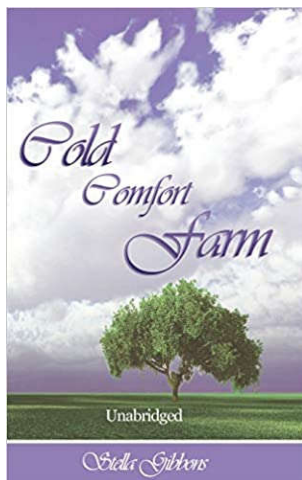


[www.facebook.com/clearerearsUK](https://www.facebook.com/clearerearsUK)



## Cold Comfort Farm - by Stella Gibbons

I am sure everyone has heard of this book and remembers it from way back! If they don't remember the book, they will remember the phrase 'something nasty in the woodshed' which is its lasting legacy!!! The main character is Flora, a young girl from a privileged background but with no idea how to support herself. She has some very strange relatives including a group of them living at a remote set up - Cold Comfort Farm - and she decides to move in with them. The main theme of the story is Flora's desire to improve the lot of the basic and archaic farm and everyone connected with it and they could certainly do with some improving!



The Group had to agree that it was rather a strange book but we found the language clear and easy to read and even enjoyed the frequent lapses into dialect. We found the quirky names of the animals not to mention the various members of the family and farm hands amusing as everyone was packed full of idiosyncrasies and very odd traits (including using twigs to do the washing up!)

Flora gradually achieved her goals and no-one seemed to think she was interfering but, as is often the case, we found that having plodded along nicely there was a sudden speeding up towards the wedding at the end and the conversion of Aunt Ada Doom which was just a bit too far fetched. We never did find out what had been 'nasty in the woodshed' and never will!!!!!!

*Conclusion - worth reading as a classic but a little bit of a chore.*

## STOKE HAMMOND COMMUNITY ASSOCIATION

Why not hire the Community Centre or the Meeting Room for your party or business meeting. Discounted rates for residents of Stoke Hammond Parish. To book or discuss your requirements, please call 07555 711929 or 01525 270151. Alternatively email your enquiry to: [enquiries@shcommunityassociation.co.uk](mailto:enquiries@shcommunityassociation.co.uk)



**TAKE A LOOK AT OUR WEBSITE**  
[www.stokehammondcommunitycentre.com](http://www.stokehammondcommunitycentre.com)





**PICTURE FRAMING**  
by  
**COUNTRY FRAME**



EST 1984

*The Complete Picture Framing Service*

Expert advice and framing on:  
Prints, Posters Water-Colours, Oil Paintings, 3D objects and all types of needlework

A huge range of mouldings to suit everything  
and over 100 different colours of quality mounting boards

Contact: **Paul Body**

10 Fishweir, off Chapel Square, Stewkley, Leighton Buzzard, LU7 0HB

[www.countryframe.co.uk](http://www.countryframe.co.uk)

T: 01525 • 240163 M: 07771 • 508805



**J & J LUXFORD LTD  
BUILDERS**

For all your building needs  
Project managed  
From design to completion

**EXTENSIONS / NEW  
BUILDS**

Contact us  
Office: 01525 240637  
07885455203 –  
07860726741

12 Ivy Lane  
Stewkley  
Leighton Buzzard  
Beds LU7 0EN

Tel: 01525 240637 & 01525 240746  
Mob: 07860 726741 & 07885 455203  
Fax: 01525 240827

[www.luxfordbuilders.co.uk](http://www.luxfordbuilders.co.uk)

## READERS LETTERS



Dear Editor,

*I am writing in response to the article published in the February / March edition of the Stoke Hammond News which referred to Virginia Guiffre's plight to hold to account the people who abused her. I do not wish to bring further debate about this latest royal scandal, nor launch into a dialogue with the author about their views, but I believe that the comments cannot be left unchecked.*

*When Nottinghamshire Police Force became the first police force in the UK to initiate a pioneering scheme to collect and record data on crimes motivated by hostility towards women, campaigner and then CEO of Nottingham Women's Centre, Mel Jeffs, said 'Misogyny is the soil in which violence against women grows.'*

*Please be sure that I am not in any way implying that our local Stoke Hammond News is in any way inciting violence or hatred against women. However, there is no getting away from the fact that the seemingly derogatory comments about Prince Andrew's accuser is an outpouring of micro-aggression towards women and resonates a misogynist point of view. Against a backdrop of #MeToo, the tragic deaths of Sarah Everard, Sabina Nessa and Aisling Murphy and the Everyone's Invited Instagram campaign, the decision to publish such an openly misogynistic point of view is misguided and must be called out and challenged.*

*We were asked the question: "Well who does know what went on all those years ago?" Is it therefore to be assumed that if sexual abuse happened a long time ago then it doesn't matter today and is no longer relevant? Almost a third of women in the UK don't report rape or attempted rape. ONS data cites the most common reasons for this are embarrassment, thinking the police couldn't help, or thinking they wouldn't be believed. At the end of 2021, in the case against Maxwell, which ended in her conviction for sex trafficking, four brave women stood up in court and faced their abuser. These women know exactly "what went on all those years ago" and have lived for years with the abuse that they suffered, as children, at the hands of predators who were protected by wealth and privilege.*

*We were also asked: 'Who really cares?' Well I do. I care deeply. New research published in June last year by GirlGuiding, the UK's leading charity for girls and young women reported that 80% of girls do not feel safe outside. The study also found:*

*"Experiences of sexual harassment that girls and young women aged 13-18 reported in public include:*



# LJM Bridal

*Brides on a budget*

**We are for brides on a budget. We do everything from wedding dresses to artificial bouquets and centre pieces plus so much more – please just ask. Call us on 07584 190012**

**See us & message us on**



**YOU COULD ADVERTISE YOUR COMPANY OR SERVICES HERE FOR JUST £30 A YEAR (6 BIMONTHLY EDITIONS) IF YOU ARE INTERESTED THEN PLEASE EMAIL:**

**[enquiries@shcommunityassociation.co.uk](mailto:enquiries@shcommunityassociation.co.uk)**

**OR CALL GREG NOBLE ON 01525 270744**

## CARPET KLEAN

We're a professional carpet and upholstery cleaning service covering Milton Keynes and the surrounding areas.

We only use top of the range cleaning equipment so you can be sure the service will be fast and professional.

**BOOK YOUR CLEAN TODAY**  
**01908 970 960**

or email: [info@CarpetKlean.co.uk](mailto:info@CarpetKlean.co.uk)

Follow us on Facebook @CarpetKlean



Introducing your local carpet, sofa, chair & rug cleaning specialist...

Rodney Nowik

- 60% experienced unwanted attention, such as whistling, 19% of all girls said it happens often or most of the time. Girls of colour were more likely to experience unwanted attention (67% compared to 57%) and to experience it more often. LGBQ girls were also more likely to have experienced unwanted attention and more often (72% compared to 57%).
- 16% experienced unwanted touching on public transport, rising to 30% of those aged 17 and 18.
- Half (51%) received unwanted sexual comments directed at them in public (33% of those aged 13 and 14.)
- Over half (54%) reported feeling uncomfortable or intimidated when out."

[\(https://www.girlguiding.org.uk/about-us/press-releases/80-of-girls-dont-feel-safe-outside-alone-with-over-half-receiving-unwanted-sexual-comments-and-attention-reveals-girlguiding-research/\)](https://www.girlguiding.org.uk/about-us/press-releases/80-of-girls-dont-feel-safe-outside-alone-with-over-half-receiving-unwanted-sexual-comments-and-attention-reveals-girlguiding-research/)

The sad fact is that these statistics won't change until the narrative does. Articles and features, whether published nationally or locally, conveying misogynistic victim-blaming perspectives simply reinforce the message to women that they won't be believed, that they should be side-lined and that their voices will be ignored.

Yours sincerely

Carolyn Howe

**FULLY INSURED PROFESSIONAL SERVICE**

**PRESSURE WASHING • SOFT WASHING**

**WHITE WATER DRIVEWAY & PATIO CLEANING**

**TARMAC CONCRETE BLOCK PAVING RESIN BOUND CRAZY PAVING SANDSTONE FLAGSTONE LIMESTONE DECKING BRICK**

**CALL TODAY 07738 434 787 FOR A FREE QUOTE**

**INFO@WHITE-WATER.CO.UK www.white-water.co.uk**

Instagram, Facebook, Trustpilot

# PLANNING APPLICATION NEWS & UPDATES FEB & MAR 2022



**In this section you will find details of planning applications received, comments made by your Parish Council, and any updates on previous planning applications.**

## **NEW PLANNING APPLICATIONS:**

**22/00613/APP** Brook Farm, Leighton Road, Stoke Hammond MK17 9DD

Erection of 42 residential dwellings including associated parking and landscaping, noting existing planning approval exists (16/024232/AOP & 19/03246/AOP) for the erection of 33 dwellings.

*Following a lengthy discussion and listening to parishioner input, Cllrs resolved to OPPOSE this application on many grounds, with main ones being the following:*

*The VALP states there should be no more growth considered in the Stoke Hammond parish until 2033. We accept the original 33 home development as included in the VALP assessment, however, this new application with an additional 9 homes should be refused if the VALP is to maintain its credibility.*

*There are far too many houses included for the size of the plot, and the new plans with the removal of all garages looks like a glorified car park, all squeezed into too small a space. Parking is already a major issue, and there is concern that visitor parking will spill out into the existing Brook Farm Close roads.*

*Little consideration has been given to noise and vibration from the adjacent Railway Line and A4146 Bypass, and the PC strongly request new surveys be carried out. Not only were the published surveys carried out in 2016, but the extra traffic now using the bypass must be taken into consideration.*

*There are no planned amenities for this increase in properties.*

*The original application had a mix of housing whereas this new application is entirely made up of affordable housing, totally changing the design.*

*The original plans did show some trees and small areas of green space, but this new design has none at all.*

*This proposed development is contrary to many policies and not only now changes the character of the area, it is also in conflict with H1 of the Local Plan. Since Brook Farm Close was first built, the demographics have changed significantly and the increase in homes is based on out-of-date survey information from 2016.*

## **PLANNING UPDATES:**

**21/04278/APP 56 Dickens Lane, Bletchley MK3 5QE**

Single storey rear extension

*Your PC previously had no objection to this application which has now been approved.*

**21/04492/APP 14 Phoebes Orchard, Stoke Hammond MK17 9LW**

Single storey side/rear extension.

*Your PC previously had no objection to this application which has been approved.*

**21/04238/APP Oakwood Grove Farm, Church Road, Stoke Hammond MK17 9BP**

Single Storey rear extension.

*Your PC previously had no objection to this application which has now been approved.*



## 21/04297APP Stoke House Farm, Stoke Road

Conversion of garage to domestic use and erection of 2 bay carport with workshop.

*Whilst your PC had no objection to this application, it has been refused on the grounds that the proposed annexe for reason of its scale and facilities contained within could be capable of independent occupation and is therefore contrary to many local policies. Likewise, the proposed garage was felt to be too close to Grand Union Canal and would be deemed an encroachment and harm this area of Attractive Landscape.*

## 21/04120/APP Stoke Lodge, Lodge Lane, Stoke Hammond MK17 9BU

Erection of a single storey home office and gym/games building.

*A redesign of a previously refused application, and opposed by your PC. The application has subsequently been withdrawn*

For further information/updates on these or other planning applications in our locality, please visit the following website entering the application reference or use the map search facility - <https://www.aylesburyvaledc.gov.uk/search-planning-licensing-applications>



**We would like to start by thanking all that supports our club. We have had a good couple of months. We have held some fantastic functions of which were fantastically well supported. Please keep an eye out for our upcoming events. These will be posted on the Facebook page and within the club house.**

**As the summer months come in, we will see the return of the cricket season. The bar will be open for every home game please come down and show your support to the cricket team. We would politely ask that you pick up all dog mess after your dog because as you can imagine playing cricket people will be diving all around the field.**

**The football team currently sit in 1<sup>st</sup> position with only a couple of games to go. Its looking likely they will win the North Bucks Football intermediate division. They are currently playing in a cup competition where they have won all their games so far.**

**The darts team have finished their season on a high after going through a very tough season. They were promoted to the A division when they were meant to be in the B division. They gave it their very best and stuck to it so we would like to say thank you to them all.**

**The pool season is also finished with the A team finishing 5<sup>th</sup> and the B team finishing joint 2<sup>nd</sup>. We will now go into the singles knockouts. This is where the top 16 from division 1 and division 2 play each other. Across the 2 teams we had 5 playing making the top 16. Tom Tooth came 3<sup>rd</sup> David Tooth came 4<sup>th</sup> Jordan D'Agostino came 8<sup>th</sup> Gary Armstrong came 12<sup>th</sup> and David Garner came 13<sup>th</sup>. We wish them all good luck in the competition.**

**Our membership is due 1<sup>st</sup> May. We would like to welcome any new members to pop in and see us. The AGM will be held on 30<sup>th</sup> April 19:30. Only current members will be allowed to vote on anything. Any notified AOB should be emailed to [david2th@yahoo.com](mailto:david2th@yahoo.com) 2 weeks prior to the AGM.**

**We would like to wish you all a happy easter.**



# High Ash C of E School Parish Council Newsletter

Grow Together Shine Forever

'Let your light shine' Matthew 5:16

April 2022

## *Sporting News....*

We have delighted to be able to start participating in inter school sports festivals as well as League Football Matches.

## *Sports Festivals*

On Monday, some of our Year Three children took part in a 'Have Fun Be Active' Festival at Aylesbury High School. The children enjoyed participating in a range of sports and had fun working as a team to complete many engaging activities. Highlights included trampolining, boxing and dance. Our Year Five/Six girls also took part in a Girls Football Skills festival held at The Cottesloe School.

## *Football*

Our Year Six football team played in a Cup Match which was a tight game and we had the lead for a while, yet it resulted in a draw and then penalties. Whilst the other team won on penalties, we can be proud of how well we played and how far we have come in Cup games, we are currently top of the league. We are enjoying having the opportunity to play matches again.

## *Support for Ukraine*

We, as a school, are wanting to support the humanitarian campaign to provide much needed supplies to Ukrainian refugees. We held a Reflection to say prayers of hope for the situation over there and to think about what we could do to help. With the connections of some of our parents, we will be looking to donate supplies to children on the Ukranian/Polish border.

## *Walking Bus*

Our Walking Bus is continuing to prove popular with parents and children alike as we have a regular group of pupils attending term-time mornings. We are hoping this continues to alleviate congestion around the school as well as helping with parking and general promoting a healthy and active start to the day for the children.

We are very grateful that we have several of our community volunteers who have offered to be involved in the Walking Bus again this year. If you feel you could offer a small amount of time in the morning during term time we would love to hear from you - please contact us at [office@highashschool.co.uk](mailto:office@highashschool.co.uk)

*Sarah J Boyce*

Sarah Boyce  
Headteacher  
[headteacher@highash.bucks.sch.uk](mailto:headteacher@highash.bucks.sch.uk)

With the dark evenings over the last couple of months we have been mainly confined to indoor activities for our weekly meetings. The cubs have been busy developing their practical home skills ranging from making cups of tea to attempting to sew buttons onto shirts. Pancake day gave the scouts a good excuse



to go and light cooking fires (we did go outside for that one!) as well as attempting to use the hiking meth stoves to cook up some food. Other evenings were spent making bird feeders and learning about each other's hobbies (from fossil collecting to ice hockey). Making traditional knot boards, soup making (surprisingly tasty!), designing and testing the best egg safe containers as well as making drums to celebrate the Chinese New Year have all been on the agenda combined with a healthy mix of games.

We are now looking forward to the lighter evenings that are just around the corner so that we can get out and about and enjoy the fresh air.

We still have places available for boys and girls aged 8 and over, so please let us know if you have a young person who would like to try us out. Our current members come from a wide area including Newton Leys, The Brickhills, Stoke Hammond and Milton Keynes.



# St Luke's Church News

**Review:** We haven't had many events recently, but enjoyed our usual popular breakfasts in February and March. (See March photo) Numbers were slightly lower in March than they had been in February, but we were delighted to welcome some newcomers to the village!



## **Church Activities:**

**Food Bank:** The food bank has been used sporadically in recent weeks. The most popular items seem to be tinned meats and



savoury meals (curries, chicken meals, beef stews etc), jars of cooking sauces, biscuits and custard, as well as sanitary towels and washing up liquid. We're very grateful to those who continue to support the food bank, but please note that **we don't accept out of date food, opened packets or anything requiring refrigeration or freezing**, Donations can be made at Community breakfast, to church committee members or deliver to Abbotsford, Newton Rd (see map).

**Lent Course:** The last Lent course session, (held in the church), will be on **Tuesday 5<sup>th</sup> April**. The material we're using this year is based on selected Psalms of Ascent and is linked in with Sunday services. The session will begin at 1pm with a free home-made soup and roll lunch (or arrive for the session start at 1.30pm). Sessions are independent so it doesn't matter if you haven't been to any others. The session will finish in time for school pick up – please let us know at the start if you need to leave promptly!



**Prayers:** Our prayer group is continuing to meet twice monthly and we're happy to pray for personal requests as well as local, national and global issues. Please speak to a church member, contact one of the wardens or complete a prayer request card at the Community breakfast.

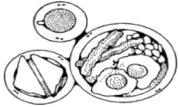
**HELP!** We're still looking for volunteers to help on the church **cleaning rota** (once every 6 weeks). We'd also appreciate anyone who'd be interested in helping with a **one off clean** getting in touch. Please also get in touch if you'd like to go on our **altar flower rota** to offer flowers for the church. In addition, our **Treasurer**

has recently been suffering from ill health and would like to step down. If you can help with any of these positions, please contact Hazel on 270404 (cleaners & flowers) or a PCC member (Treasurer). See numbers below. Thank you!



## **Community and Social:** (Subject to Government guidelines)

**Community Breakfasts:** We'll be holding our popular Community Breakfasts again on **Sat 9<sup>th</sup> April & Sat 14<sup>th</sup> May** with orders taken from **8.30 – 10.30am**. Our May breakfast will be a "Big Brekkie" and proceeds will be going to the charity **Christian Aid** for Christian Aid week. We'll be enjoying all the usual breakfast fayre and it would be lovely



if you could join us!

Contact us (details below) if you'd like to go on our (GDPR) email list for reminders of social events or our email list for services and social events.

**Services:** (Subject to Government guidelines) See full listing elsewhere in the newsletter

**Health & Safety:** We will be continuing to follow Church of England guidelines and taking safety precautions as necessary, erring on the side of caution owing to the age profile of church members.

**Palm Sunday:** Our Family Service will be at **11am** on **10<sup>th</sup> April**



**Maundy Thursday:** Said Holy Communion at **7.30pm**

**Good Friday:** No service, but church is open from 2-3pm for prayer or quiet time

**Easter Day:** 9.30am Holy Communion – all are welcome

**Café church:** We're having a Cafe Church service from 9.30am on **3<sup>rd</sup> April** at St



Luke's! Anyone who's been will tell you our all age introductory service is very informal: a simple (free) breakfast and chat with your neighbours followed by a 15 – 20 minute "service" of a short talk, sometimes with prayers, sometimes music. Come along and join us!



**Family Service at the Community Centre:** We'll be holding our **Pentecost** (Whit Sunday) Family Service on **5<sup>th</sup> June** - the weekend of the Queen's jubilee - at the Community Centre. We're planning an inclusive service suitable for all and it would be lovely to see you there!

## **Fundraising:**

Our fundraising committee have arranged a proposed programme of events for the year – put them in your diary now to avoid disappointment:



**Saturday 23<sup>rd</sup> April:** Sponsored walk – this year walking North up the canal to The Plough at Simpson for lunch. If you'd like to join us on the walk and collect sponsors, please request a sponsor form from Dave Webber 270409

**Saturday 7<sup>th</sup> May:** Plant Sale on the village Green – you'll be able to buy plants produced by a professional grower. Come and buy your bedding plants and more!

**Saturday 16<sup>th</sup> July:** St Luke's Church fete – all the usual stalls and attractions at our renowned fete!

**Saturday 12<sup>th</sup> November:** Beetle Drive and Bingo

**Saturday 26<sup>th</sup> November:** Christmas Fayre

**Bible verse of the month: Rom 12: v 17-19:** <sup>17</sup> Do not repay anyone evil for evil.



*Be careful to do what is right in the eyes of everyone. <sup>18</sup> If it is possible, as far as it depends on you, live at peace with everyone. <sup>19</sup> Do not take revenge, my dear friends, but leave room for God's wrath, for it is written: 'It is mine to avenge; I will repay,'<sup>[a]</sup> says the Lord.*

**What does it mean?** St Paul wrote this instructive letter. It's very easy for us to look at people we believe are doing what we know to be wrong and think that they shouldn't be allowed to get away with it or that they should be punished, but without all the evidence, we sometimes can't see the whole picture. There may be some mitigating factor that we are unaware of for example. Fortunately in this country we have a legal system designed to uphold justice, although it isn't infallible. This verse tells us not to take revenge, but to acknowledge that God sees everything and knows who is doing wrong. They will be charged to account for themselves on the day of judgement and then will suffer the consequences of their actions.

**Funeral information:** You may wish to know that the Rector is able to conduct a funeral service at a local crematorium if your loved one prefers to be cremated. New rules mean that crematoria are now no longer offering a religious service by default: it now has to be specifically requested by the family. In addition, any resident of the village is entitled to have their ashes buried in the churchyard (for a small fee) if they wish.

**Church Benefice Website:** [www.brickhillschurches.org.uk](http://www.brickhillschurches.org.uk).



St Luke's offers baptisms, weddings and funerals which are now freely available. Please contact the Rector if you'd like to discuss any of these. The Rector's contact details are on the website. His phone goes straight to an answerphone but he'll reply as soon as he's able, or contact a Churchwarden. The

Rector's day off is Monday. If you have a prayer request or enquiry, please ring

**Churchwardens: Harry, on 07773065271; Diane, on 270409 or Treasurer:**

**John, on 270202.**

**MAP**  
(Not to scale)





## VILLAGE DIARY

Tuesday 5 <sup>th</sup> April	Parish Council Meeting – Community Centre – 19.30
Saturday 9 <sup>th</sup> April	Community Breakfast – Community Centre 08.30 – 10.30
Tuesday 3 <sup>rd</sup> May	Parish Council Meeting – Community Centre – 19.30
Saturday 14 <sup>th</sup> May	Community Breakfast – Community Centre 08.30 – 10.30
2 <sup>nd</sup> – 5 <sup>th</sup> June	Platinum Jubilee Celebrations (See back page for details)
Tuesday 7 <sup>th</sup> June	Parish Council Meeting – Community Centre – 19.30
Wednesday 8 <sup>th</sup> June	Community Association AGM – Community Centre 19.30

*For Church dates/times please see 'Church Services' on page 2.*

### ORGANISATIONS THAT USE THE COMMUNITY CENTRE

#### **High Ash Scouts, Cubs (Beavers)**

Every Thursday 17.30 – 21.30hrs

Contact: Dave Pollington 01525 270864

#### **Buttons Pre-School**

Monday – Friday 09.00 – 15.00hrs

Contact: 01525 270501/07973 158368

To Hire the Hall please telephone 07555 711929 or e-mail: [enquiries@shcommunityassociation.co.uk](mailto:enquiries@shcommunityassociation.co.uk)

### **SH NEWS – ADVERTISING RATES**

For 6 bimonthly editions: FULL Page - **£85.00** HALF Page - **£50.00** QTR Page - **£30.00**

**To upgrade to full colour on rear cover, additional per edition cost:**

**FULL Page – plus £15.00 HALF Page - plus £10.00 QUARTER Page - plus £5.00**

**Note: Upgrading to full colour is on a per edition basis, not a commitment for 6 editions**

Buckinghamshire Council	0300-131-6000
Aylesbury Vale Area – Buckinghamshire Council	01296-585858
Community Transport Co-ordinator	07729-699488
Registrar ( <i>Births &amp; Deaths</i> )	01296-383005
Registrar ( <i>Marriages</i> )	01296-382481
Fly-Tipping on Roads	01296-382416
Social Care Services ( <i>Emergency Duty</i> )	0800-999-7677
MK General Hospital	01908-660033
Stoke Mandeville Hospital	01296-315000
Luton & Dunstable Hospital	01582-491122
SH Gardening Club ( <i>Eileen Curry</i> )	01525-270858
Clerk to the Parish Council ( <i>Jo Simonds</i> )	07818-016108
Parish Council Chairman ( <i>Malcolm Newing</i> )	07702 067966
Gt Brickhill Ward Councillor ( <i>Phil Gomm</i> )	07778 117647
Gt Brickhill Ward Councillor ( <i>Jilly Jordan</i> )	07740 308468
Gt Brickhill Ward Councillor ( <i>Iain Macpherson</i> )	Not Available
MP - Buckinghamshire. ( <i>Greg Smith</i> )	01296-714240
High Ash School	01525-261620
St Luke's Church ( <i>Revd John Waller</i> )	01525-261062
St Luke's Church Warden ( <i>Diane Webber</i> )	01525-270409
St Luke's Church Warden ( <i>Harry Davies</i> )	01234-822780
Stewkley Methodist Church ( <i>Mary Cottrell</i> )	01296 688741

***Police non-emergency number 101***

***NHS Helpline non-emergency number 111***

ANSWERS TO MAVIS'S QUIZ 1/Lance Corporal Jones – Dad's Army 2/ Victor Meldrew – One Foot In The Grave 3/Baldrick – Black Adder 4/Mr Humphries – Are You Being Served 5/Ooh Betty – Frank Spencer 6/Lovely Jubbly – Del Boy 7/Silly Old Moo – Till Death Us Do Part 8/You Dirty Old Man – Steptoe And Son 9/Michelle Dubois – Allo Allo 10/ Basil Fawlty – Fawlty Towers

## EDITOR'S NOTE

I feel I must make an apology to any readers out there, like the writer of the 'Readers Letter' published within this edition, who were upset and aggrieved by some of the content to the 'Grumpy Old Man' in the last edition of the SH & NLS News. The 'Grumpy Old Man' is written with a satirical take on events going on in our life and is not intended to cause offence, but in hindsight some of the wording could have been better thought out and picked up before publishing. Please be assured that all future submitted articles from whatever source will be more rigorously vetted before committing to print.

You will see from the front and rear cover, that the plans for Stoke Hammond to celebrate and take part in the Queen's Platinum Jubilee celebrations are very much starting to come together. It's certainly going to be 4 days to look forward too and enjoy.

May I please have copy for the June/July 2022 issue by the **20<sup>th</sup> May**  
 Greg Noble, Oak Farm, Bragenham Side, Stoke Hammond. MK17 9DB  
 01525 270744 E-mail: [gregnoble1980@aol.com](mailto:gregnoble1980@aol.com)



## WASTE COLLECTION DATES

### STOKE HAMMOND VILLAGE & NEWTON LEYS SOUTH

Waste Bin: 	Recycling Bin:  <small>Paper, glass, cardboard, plastics, cartons, cans &amp; tins</small>	Food Waste Bin:  <small>Non-recyclable or compostable.</small>	Garden Waste Bin: 
Wednesday 6 April		Wednesday 6 April	Wednesday 6 April
	Wednesday 13 April	Wednesday 13 April	
Thursday 21 April		Thursday 21 April	Thursday 21 April
	Wednesday 27 April	Wednesday 27 April	
Wednesday 4 May		Wednesday 4 May	Wednesday 4 May
	Wednesday 11 May	Wednesday 11 May	
Wednesday 18 May		Wednesday 18 May	Wednesday 18 May
	Wednesday 25 May	Wednesday 25 May	
Wednesday 1 June		Wednesday 1 June	Wednesday 1 June
	Wednesday 8 June	Wednesday 8 June	
Wednesday 15 June		Wednesday 15 June	Wednesday 15 June



**Write your name in Stoke Hammond History**

**As the opening ceremony for the Queen’s Jubilee celebration weekend, we will be lighting a beacon whilst hosting our first event, a fun music night and BBQ for all to enjoy on Thursday 2<sup>nd</sup> June at the Stoke Hammond Sports Club.**

**The Beacon will be lit at 9.30pm on the sports field coinciding with hundreds of other Beacons at the same time all over the country.**

**To mark this special event, one lucky resident of our Parish will have the honour of lighting the beacon. We are giving all residents, of all ages, this chance to become a part of our Stoke Hammond history.**

**Anyone can apply by completing the form below and posting it in the boxes sited in the shop, the Community Centre and the Sports Club.**

**We will draw the name on the night and the winner will then carry out the formal lighting of the ‘Stoke Hammond Beacon’, start our celebrations and get to keep the special Torch, suitably engraved with their name, used for lighting it.**

.....  
**Nominee to light the Stoke Hammond Beacon**

**Name:.....**

**DOB:.....**

**Address:.....**

**Email:.....**

**The only eligibility criteria are you must be a resident of the Stoke Hammond/Newton Leys Parish and be there for the draw.**

**Note: If you prefer not to cut this section out your SH & NLS News, then just provide the above details on a slip of paper and drop into one of the boxes**



STOKE HAMMOND

# 4 DAYS OF EVENTS



## THURSDAY 2ND JUNE



Fairground Rides for Children  
at the Sports Club (5pm)

Music + Barbecue + Bar  
at the Sports Club (7.30pm - late)

Beacon Lighting (9pm)

## FRIDAY 3RD JUNE



Sports & Games Activities  
on the Sports Field (2pm)

Fun Races + Welly Wanging  
Archery Experience & much more

Barn Dance + Hog Roast + Bar (8pm - late)  
at the Community Centre / Sports Club

## SATURDAY 4TH JUNE



Village Treasure Hunt (11am - 12.30pm)

Queen's Canopy Tree Planting  
on the Green (12.45pm)

Derby Day Picnic & Tote on the  
Community Centre Field (2pm - 6pm)

Jubilee Concert Screening & Bar  
on the Community Centre Field (7pm - late)

## SUNDAY 5TH JUNE



Big Lunch Street Party  
at Bragenham Side (1pm - 4pm)

Children's Entertainer

Children's Jubilee Gift

## Be a part of the celebration