

SH & NLS NEWS

Stoke Hammond & Newton Leys South
www.stokehammondpc.com

DECEMBER/JANUARY 2022





'Tis The Season To Make A Difference Today PLAY

WIN a £1,000 DECATHLON voucher to spend on 70+ sports, nutrition & body care products as well as weekly cash prizes up to £25,000!



All for £1 a week!



- Help our cause help the community
- A ticket purchase will help us make winter warmer
- It's a win-win, helping us whilst buying chances at weekly prizes!

BUCKINGHAMSHIRE
LOTTERY

To start supporting, visit:
www.buckinghamshirelottery.co.uk
and search for: Stoke



Supporters must be 16 years of age or older* See website for Terms & conditions. Enter by 1st Jan 2022

DECATHLON

Neighbourhood and Community Strategy Plan

The Stoke Hammond Parish Council are embarking on the production of a

1. Neighbourhood Plan
2. Community Strategy and Plan

The **Neighbourhood Plan** - This will aim to produce specific policies, agreed by the local Community, to impact upon future development of the Parish and to protect those aspects of the Parish considered most important to Parishioners

The **Community Strategy and Plan** - This will aim to review the current facilities available to Parishioners, determine the gaps as determined by Parishioners, and to produce a plan that best utilizes available resources, both land and money, to enhance the existing facilities/services.

Benefits to Parishioners

1. You get a significant say in how 'your' village will be developed in the future.
2. Currently we have up to £500k available for the improvement of Parish facilities. You get an opportunity to say on what this money should be spent.

Critical First Step - Fundamental to both these aims is the completion of the survey enclosed with this SH & NLS News. We have set an ambitious target that 60% of over 16 year old parishioners complete the survey which will be open from 7th December to 7th January.

The link to the questionnaire is available online at www.stokehammondpc.com and it's our preference that this be the method of completion. We will however accept hard copy responses for those not at ease with a computer/tablet. Postal boxes for completed hard copy questionnaires will be available at the Village Shop, the Community Centre, St Luke's Church and the Sports Club.

During December opportunities will be made available via zoom and at the Community Centre to discuss the projects and questionnaire with Parish Councillors

Zoom call on the 9th December at 7.30. Just copy the link below and enter the Meeting ID and Passcode to join.

<https://us02web.zoom.us/j/82043807158?pwd=ZUdmdFhuL3owOUt6djBXQ3FQWWJvZz09>

Meeting ID: **820 4380 7158** Passcode: **852974**

Community Centre sessions 15th December from 7.30pm and 9.30pm. Just pop in anytime for a chat.

Both projects and the ensuing benefits to the community, stand and fall on this initial stage. Without input from a large diverse population of parishioners we will not be able to make decisions based on the community's need nor have the validity of your support.Please get involved.

CHURCH SERVICE DATES TO JANUARY 2022

DECEMBER

5th December: 4pm Christingle service at St Luke's, Stoke Hammond

12th December: 4pm Carol Service at St Luke's, Stoke Hammond

19th December: from 9.30am Cafe church* at St Luke's, Stoke Hammond

24th December: 4pm Crib service at St Luke's, Stoke Hammond

24th December: 11.30pm Midnight Holy Communion at St Luke's, Stoke Hammond

JANUARY

2nd January: 10am Benefice Holy Communion at St Mary's, Great Brickhill

9th January: 11am Family Service with Baptism at St Luke's, Stoke Hammond

16th January: from 9.30am Cafe church* at St Luke's, Stoke Hammond

23rd January: 9.30am Holy Communion at St Luke's, Stoke Hammond

30th January: 11am Benefice Holy Communion at All Saints, Bow Brickhill

* Enjoy a simple breakfast & chat before a 15-20minute easily accessible "service"
(eg. reading/prayer/reflection)



The Community Association who manages your Community Centre have been busy over the last few months improving and upgrading the Centre. Earlier in the year we retained the services of a specialist company to undertake both a Mobility and a Fire Risk Assessment of the complete centre. In general, the centre was found to be compliant but the assessment did highlight a few issues requiring attention. So, in the July and August whilst the Buttons preschool were on their Summer Break, we first had the badly potholed entrance road and the uneven pavement that leads up to the centre, completely resurfaced and at the same time created a dedicated disabled parking bay and a new mobility friendly textured dropped kerb. Thankfully, we were able to secure some funding towards the cost of this and we must say a big thankyou to the Mercers' Company of London and their Philanthropy Grant, and also to the Winslow and Villages Community Board for their funding for this project. But things did not stop there, as a full electrical inspection revealed several areas although not unsafe that required attention along with need for an upgrade to our emergency lighting and fire alarm. Again, taking advantage of the school holidays, in the October half term electricians arrived and carried out extensive work and we now have a full 5 year electrical certification for the complete building. As well as this electrical work which also included the upgrading of the emergency lighting a new wireless monitored fire alarm system was installed throughout the Centre. Continuing the improvements, new blackout blinds are to be installed within the main hall, which will make it easier for those wishing to use projection or similar equipment. www.stokehammondcommunitycentre.com

Email: enquiries@shcommunityassociation.com



SENIOR CITIZENS CHRISTMAS LUNCH
From 13.00 on Saturday 18th December
There's still time to book your place
Call Greg 07729 691888 or Ann 01525 270151



PARISH COUNCIL NEWS

To many RAF Stoke Hammond is something they know very little about if anything at all. Located as it was on an isolated site off Dorcas Lane, with just one of the original buildings remaining. But because of the extensive time and efforts of local resident Nick Ellins who delved into the history of this WW2 and latterly Cold War site, we now know much more about its operation and the important role it played during those difficult times. The RAF Wireless Station opened in 1943 and was part of an extensive network of similar secret sites linked to Bletchley Park that were intercepting encrypted radio transmissions and forwarding these onto Bletchley Park for deciphering which ultimately played such an important role in bringing an end to the WW2 conflict. After the war RAF Stoke Hammond continued in operation and was linked to RAF Stanbridge during the Cold War but was finally decommissioned in 1973. The Parish Council was approached by Nick asking if they



PC Chair Malcom Newing & Greg Smith MP

could assist in creating some form of permanent memorial for those who had worked and served at RAF Stoke Hammond, something we were both delighted and honoured to be involved with. So it was, and most fittingly on the Saturday of the Remembrance weekend, that the Parish Council was joined by Nick and members of the 2366 (Bletchley Park) Squadron of the Royal Air Force Cadets on the Village Green along with our special guest Greg Smith MP our Buckinghamshire Member of Parliament to unveil a memorial plaque in honour for all

those that served at RAF Stoke Hammond. A similar plaque has also been placed within St Luke's Church.

This memorial event and as we have come to expect from our parishioners, attracted a large turnout of support from you all, so it was felt by the PC that this would be an ideal time to recognise the immeasurable contribution that Hazel Turner has made in our community. Over the years Hazel has been involved with so much in Stoke Hammond that it would be impossible to list them all here, but for example Hazel has been a Parish Councillor, a member of the Sports Club Committee, a Trustee for the Community Association and heavily involved in the upkeep and fund raising for St Luke's Church. It was also quite fitting with it being the Remembrance weekend that



Hazel as the local Poppy Appeal organiser has raised in excess of £18,000 for the British Legion, and over £500 in this her final year in the role. Hazel very nearly missed the event as she was getting her most important Covid booster jab, but thankfully did arrive in time to be presented with a fabulous bouquet of flowers by the PC Chair Malcolm Newing, and was overwhelmed by the massive applause she received.

Just after the last edition of the SH & NLS News went to press, we learnt that the much talked about Vale of Aylesbury Local Plan (VALP) 2013 – 2033 was formally adopted by the Buckinghamshire Cabinet following its examination by the Government's appointed Planning Inspectorate. One of the most important points about the VALP for the Parish of Stoke Hammond which runs until 2033, is that it determines future housing growth needs and the VALP identifies that Stoke Hammond when taking into consideration recent and already approved housing developments, does not need to accommodate any further housing growth within the VALP's time frame.

There have been two Parish Council Meetings held at the Community Centre since our last report, both of which were well attended by you the public. The full minutes of these meetings can be found on the PC website, but here follows brief details for some of the items discussed. For planning matters and updates, please see the 'Planning' section elsewhere in this edition:

- At the October meeting the Public Participation session which is normally held at the beginning of the meeting was moved to the end, with a new item 'Clerks Update on Matters Arising' added to the start, and indeed this worked very well, as this update on items raised at previous meetings, did effectively answer some of the questions which may well have been asked in the public participation session. All agreed that this new format worked well and will be carried across for future meetings.
- The Wing Ward Councillor Peter Cooper had written to all Town and Parish Clerks, about the fact that across the country many highways authorities have embraced the principle of 20mph zones being introduced into residential areas, such as our neighbouring counties of Oxfordshire, Bedfordshire and Hertfordshire, but at the present time the Bucks Transport policy has no provision to even consider the introduction of 20mph zones. Your PC unanimously agreed that we would welcome the opportunity of at least having the possible option of introducing 20mph zones in our Parish, something we don't have now. The Clerk would be writing to Cllr Cooper confirming our support for his campaign.
- It was asked if the PC would look into the possible reinstatement of the Village Pond that used to be at the top of Church Road. This subject was investigated a few years ago but went no further. The pond site if it were to be excavated would involve the removal of many tons of earth, and would involve much cost, albeit there maybe some grant funding available to help reduce the burden on the Parish coffers. But there are other matters to consider, not least does the village as a whole want the pond reinstated, so it is likely that a poll will be undertaken to glean what the village would prefer – Pond or No Pond? It was also felt that the PC would need to seek some professional advice, as to any drainage or water damage issues that could occur to nearby residences if indeed the pond which used to be served by a natural water source was dug out and allowed to refill.

- The PC agreed to set up a Community Fund Grant scheme whereby organisations within the Parish can apply for monies to support projects or needs that the organisation are unable to adequately self-finance. Although not yet finalised, the scheme will probably have a total annual budget of £2.5 - £3K with a maximum grant of £350 per project. Applicants will have to complete a questionnaire that will point scored to access if the project qualifies for financial support.
- The matter of the land to Mount Pleasant that back in December of last year was suddenly fenced off, came up again as the application by the residents to have the land registered as a Village Green, has finally been acknowledged when a sign appeared on the site from Buckinghamshire Council confirming this application. If successful, and the land does become registered as a Village Green, the land owner will be obliged to reopen the land for all to use. The PC will again be writing to the authorities to reiterate their support for this application.
- The PC will be funding the siting of a new litter bin outside/nearby to the village shop to ease the problem of waste in this area.

With this being the last PC News of 2021 and the next scheduled PC Meeting is not until the New Year 7.30pm Tuesday 11th January at the Community Centre, your Parish Council would very much like to take this opportunity to wish all that live within the Parish of Stoke Hammond the Happiest of Christmas's and the Very Best for 2022.



Should you wish to contact your Parish Council, please do so via our clerk:

Joanna Simonds, Hollymill Cottage, Newton Road, Stoke Hammond, Bucks. MK17 9DE
 Tel: 07818 016108 clerk.stokehammondpc@gmail.com www.stokehammondpc.com

Greenstripe

The lawncare specialists



BOOK YOUR
FIRST
TREATMENT
WITH
50%
OFF



- ✓ LAWN TREATMENTS
- ✓ AERATION
- ✓ SCARIFICATION
- ✓ TOTAL RENOVATION
- ✓ TURFING



- ✓ FRIENDLY SERVICE
- ✓ EXPERT KNOWLEDGE
- ✓ FREE QUOTATIONS
- ✓ LOCAL SPECIALISTS
- ✓ FAMILY RUN



PUT YOUR
LAWN
IN THE PICTURE

#LawnsByGreenstripe



@greenstripemkLtd



EXPERIENCE THE
GREENSTRIPE DIFFERENCE



News from Buckinghamshire Council

Dear Resident

17 November 2021

It's almost unbelievable but suddenly we find ourselves just a few weeks away from Christmas! As we draw to the end of another year I'm sure now more than ever, we are all looking forward to time spent with family and loved ones, with more freedoms than last year's festive season could allow.



Obviously, our high streets have suffered greatly in the last two years so I hope you are able to consider supporting our independent businesses this year by shopping local as much as possible in the run up to Christmas, and that you can also enjoy some of the many festive events we're able to look forward to this year that couldn't take place last time. Keep your eye on the Buckinghamshire Council website and social media pages for updates and look out for some free parking offers too in the run up to Christmas. Please bear in mind these are for Council controlled car parks only, charges may still apply in other private car parks.

Children's Christmas Gift Appeal

With Christmas in mind, I'd also like to draw your attention to this year's Christmas presents appeal for venerable, local children here in Buckinghamshire

Often the gifts these children get through this appeal are the only presents that they will get at Christmas.

This year's appeal is being run by the newly formed local charity, [Inspire Bucks](#) – made up of volunteers who have run the appeal in previous years. Money donations can be made online at the [appeal GoFundMe page](#) – these allow gifts to be bought to suit individuals' needs and delivered directly to children that the Council works with through social services. For people who would prefer to choose a gift themselves for a child in need, [Inspire Bucks can provide details](#) of where gifts can be dropped off.

Your generosity in previous years has made a huge difference to Christmas for some of our most disadvantaged children. I know this year has been another Challenging one, but if you are in a position to make a donation, it would be hugely appreciated.

Dave Reid

Property Repairs &
Alterations

Fully Qualified Carpenter

kitchen & bathroom upgrades
staircase conversions
replacement doors
general maintenance
small building work

07939 146630

davereid935@btinternet.com

based in Soulbury

Local Carpenter

- With many years of experience
- Good quality work
- Including doors, kitchens, fitted wardrobes and shelving
- Large or small jobs

You can contact James on these numbers:

Phone : 07970 750599

Home : 01525 270400



JBContractors

JB Thomas - Proprietor

LAPTOP & COMPUTER

Server, Printer, Apple, Setup,
Repairs, Data recovery, Internet,
Wireless, Network, Virus
infection, Home/Office computer
problems. Services from £40.

**Your local IT support, 7 days
services, we visit you**

No Fix - No Fee

Qualified, Experienced

PClaprepairs@gmail.com

01525 306316 – 07925 338435

NEED A HAIRCUT?



GIVE LES A CALL

07723 300576

**I'm a mobile
Hairdresser working
in and around
Stoke Hammond**

Covid and Winter Health Pressures

It's been welcome to see the number of new Covid infections and hospital admissions fall in the most recent weeks. Infection rates have declined since I last wrote to you and are now at 401.6 per 100,000 in Buckinghamshire. Nevertheless, we know that our local health, hospital and care services are under tremendous pressure and will continue to be so throughout winter. As even colder weather sets in, we also know that more indoor socialising will take place, meaning all respiratory diseases, including Covid, can spread far more easily. Even though it feels counter-intuitive when it's cold, I can't stress enough how much difference it can make keeping indoor spaces well-ventilated, so I do urge you all to consider having the windows open. You can see the latest Covid data for Buckinghamshire on the [Council's Covid dashboard](#).

I would urge anyone who is eligible for a Covid-19 booster vaccination dose to please arrange one as soon as they can. Like some vaccines, levels of protection can wane over time. By getting the booster dose you can extend your protection this winter, protecting yourself, your family and your friends. And remember, people aged 40 and over are eligible to book a booster vaccination using the [National Booking System](#) from 22 November. You must leave six months between having your second dose and your booster.

As I stressed last time, due to the success of the vaccine programmes, high infection rates are not leading to the previously high levels of serious illness and deaths, but we know the strain it all puts on our health services across the board.

If we all do our bit, like using health services wisely, using our pharmacists for advice about general health and only attending A&E in the instance of serious accident or illness, we can all play a part in helping our colleagues working in the NHS and care services who continue to do such an incredible job, day in day out, keeping services running.

Please check the [winter health pages](#) on our website for the latest advice.

And, as ever, keep up to date with the latest Government advice and information on Covid-19 at www.gov.uk/coronavirus.

More on staying safe this winter

There are other pressures colder weather brings too, so it's always wise to go through a bit of a winter 'checklist' at this time of year.

- Is your medicine cupboard stocked up and in date in the event of treating coughs and colds quickly?
- Is your car equipped for winter and do you know about safer driving in cold dark, icy conditions?
- We can all feel a bit low when it's dark for longer, do keep a check on your own health and wellbeing and don't let the cooler weather keep you cooped up unnecessarily, a good walk and some fresh air each day can work wonders, and where you feel worse emotionally, reach out for help.

- Be a good neighbour – check in on those more vulnerable especially the elderly and those who live alone.

Our communities have done us all proud throughout the pandemic and we love hearing stories about how everyone continues to look out for each other – so please share your stories and pictures with us @BucksCouncil using #staysafethiswinter as we'd love to share them in newsletters and via social media to spread some festive cheer!

Remembrance Reflection



As ever, it was an honour this weekend to remember those who have fought on our behalf in past wars and other military conflicts. I was at a local Remembrance Sunday event in Little Chalfont and it was also good to see veterans and representatives from the armed forces attend the county Remembrance event in person this year in Aylesbury.

Green Wheels in Motion

Obviously, Climate Change has been very much at the top of the news agenda during COP26. It's an issue we continue to treat as a priority here in Buckinghamshire. I was delighted to go along to our very own COP26 event last week, 'Green Wheels in Motion' – held at Silverstone and which focussed on green transport solutions and how we can dramatically reduce carbon emissions created by transport.

We saw some fantastic demonstrations which showcased our work here in Bucks in this area – from our innovative wireless electric vehicle charging points to our advances in e-transport. And excitingly, I was able to announce how we are working to convert our whole vehicle fleet to zero emission using electric power in a unique partnership with Silverstone-based company Lunaz, who lead the field in restoring and converting vehicles to electric power, including HGVs such as large waste vehicles – www.buckinghamshire.gov.uk/news/council-unveils-ambitious-plan-to-convert-fleet-to-electric-power

I was very pleased indeed to sign a letter of intent with David Lorenz, founder of Lunaz Group to explore the options for how we do this here in Bucks – so watch this space for how we move this critical part of our overall [Climate Change and Air Quality Strategy](#) forward.

Support for Afghan families

As you know, recent events in Afghanistan have left many women, children and men in the country feeling vulnerable and fearing for their lives. Many Afghan nationals have managed to leave the country, with some now seeking to rebuild their lives in the UK.

We are committed to keeping people safe from vulnerable situations, which is why we continue to work hard, together with our partners, to welcome people arriving here from Afghanistan who are in urgent need of protection because they have worked with our Armed Forces. After months of planning and discussions with the Home Office we are now welcoming our second family.

The family is being helped to integrate into society and build a new life – ensuring they do not feel alone and isolated – receiving help with medical needs, arranging English lessons, if required, finding jobs and getting children into education. Part of the arrival package includes donated furniture, a welcome pack and access to local support networks to help them settle in. Up to a further 28 families are expected to arrive in Buckinghamshire over the next few years as part of our pledge to take in up to 30 families who worked with UK forces in Afghanistan.

I would like to thank our local community who have been frankly amazing; landlords across the county have responded to the call for much-needed homes, huge offers of support have come in from communities and considerable amounts of money have been donated to the ‘Helping Hand’ Afghan Crisis Fund, hosted by Heart of Bucks, which currently stands at over £65,000.

For people wanting to support in other ways, there are a number of volunteer organisations and groups that we work with who you can contact about volunteering or befriending opportunities – www.buckinghamshire.gov.uk/community-and-safety/how-we-are-supporting-the-afghan-crisis For individuals wishing to donate money, you may want to consider donating to the Buckinghamshire ‘Helping Hand’ Afghan Crisis Fund – www.totalgiving.co.uk/appeal/helping-hand

Further information is available on GOV.UK – www.gov.uk/government/topical-events/afghanistan-uk-government-response.

Trees

National Tree Week starts on 27 November – the biggest annual celebration of trees in the UK. It marks the start of the winter tree planting season, and this year will be particularly special because the trees planted will form part of Her Majesty the Queen’s Green Canopy (QGC). The Queen’s Green Canopy is a unique tree planting initiative created to mark Her Majesty’s Platinum Jubilee.

National Tree Week will see the first trees being planted at schools, care homes and nurseries across Buckinghamshire, and we will be providing commemorative plaques to go alongside the trees.

LOCAL BRITISH NON DROP TRADITIONAL AND POTTED

CHRISTMAS TREES



ALSO WREATHS, MISTLETOE, PLANTED GIFTS, WILD BIRD FOOD



AVAILABLE FROM

HEADY PLANTS



STOKE ROAD, NEWTON LONGVILLE, MK17 0BG

TEL 07986297547 WWW.headyplants.com

OPEN 10-4PM FROM 28 NOVEMBER



FREE MINCE PIE

FREE LOCAL DELIVERY ORDERS CAN BE TAKEN BY PHONE

WEEKEND 11TH/12TH

CARDS ACCEPTED



SUNSHINE BLINDS



Domestic and Commercial

ROLLERS - VERTICAL - PLEATED - VENETIAN - ROMAN

URBAN SHUTTERS - DAY AND NIGHT - PERFECT FIT

FREE NO OBLIGATION QUOTES

FREE FIXTURES AND FITTINGS

07710 298129 / 01908 502366

WWW.BLINDSMILTONKEYNES.COM

FOLLOW US



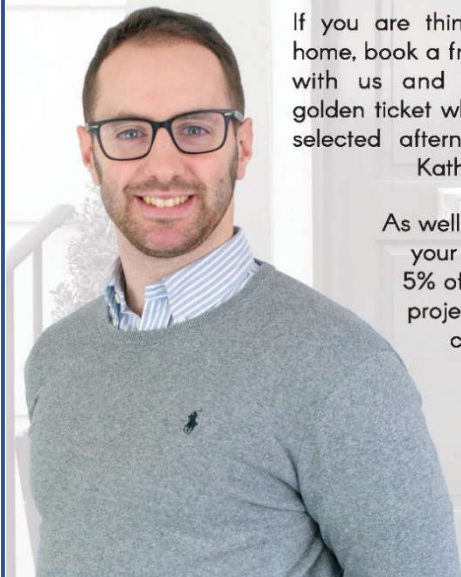
Tree planting is one of the best ways to help the environment because trees absorb carbon dioxide, and release oxygen back into the air. Trees help prevent flooding, improve water quality, and enhance biodiversity. Experts recommend planting trees between October and March, when they are dormant and less likely to be damaged during planting.

We are on a mission to create a greener, cleaner future for everyone in Buckinghamshire and will be planting over half a million trees in the next 10 years. We want residents and community groups to join our Bucks Tree Mission by getting involved in community tree projects such as the Queen's Green Canopy – www.buckinghamshire.gov.uk/news/the-queens-green-canopy-getting-involved

As always, take care and stay safe in these dark autumn/winter evenings.

SUPPORTING OUR LOCAL AREA

To spread some cheer this year, Fine Homes Property has teamed up with the Brickhill Bistro to bring you some delicious treats.



If you are thinking of selling your home, book a free market appraisal with us and you will receive a golden ticket which entitles you to a selected afternoon tea or one of Kathryn's delicious cakes.

As well as this, when we sell your home we will donate 5% of our commission to a project in your village or a charity of your choice.



FINEHOMESPROPERTY

Your personal realtor

Marcus Feinhols

Marcus Feinhols MNAEA
Managing Director

 01525 261100

 marcus@finehomesproperty.co.uk

 www.finehomesproperty.co.uk

Martin Tett

Leader of
Buckinghamshire
Council

GET IN TOUCH WITH US

To contact us online, please use our [Contact Us Form](#). If you're unable to contact us online, please call us on 0300 131 6000.

Phone lines are open

Mon – Thur 9am to 5.30pm

Friday – 9am to 5pm

Buckinghamshire Council
The Gateway,
Gatehouse Road,
Aylesbury, HP19 8FF
buckinghamshire.gov.uk





MD Autocare

Vehicle Maintenance

Stoke Hammond's local Independent Garage.

Keeping the cars of Stoke Hammond & surrounding areas on the road since 2001

Available for:

Servicing & Repairs

Mots

Diagnostics

Air Conditioning

All Makes & Models

Fitting is free for all Bulbs, Blades & Batteries purchased from us
(Standard fitment only)

You can find us up the single track road, left of the Village Shop.

Mark, Jo & Nikki

MD Autocare, The Workshop, Olde Bell Close
Stoke Hammond, MK17 9BZ

Tel: 01525 270278

Email: mdautocare@gmail.com

Facebook: www.facebook.com/MDAutocare



Time - Speed

Time and tide wait for no man. The world keeps spinning and Canute can vouch for the tide. I've been watching Brian Cox's programme "Universe". That makes you think. Millions of years is a long time. Millions of light years is a bloody long way. Galaxies come, galaxies go and our world will disappear along with everything else.

The clocks went back last month and I enjoyed an extra hour in bed. I awoke quite refreshed (although this may be connected with an alcohol free week) and thought why don't I go to bed an hour earlier every night and wake up feeling better every day - fat chance. About that time I was talking with someone about time management and the subject of HS2 came up. It's always been my argument that if a man in London wants to get to Manchester 15 minutes quicker he should get up 15 minutes earlier and catch a different train.

AND this morning (18.11.21) it was announced that the Leeds branch is to be cancelled. Hurrah - why didn't they do that for the first stage saving the taxpayer billions of pounds and the ripping up of our County?

To conclude I came across a reader's letter in the Sunday Times. It made me think life is just me, me, me and now, now, now and climate change is relatively insignificant. It read: "Life is just a moment in time between two eternal periods of total oblivion"

Grumpy Old Man

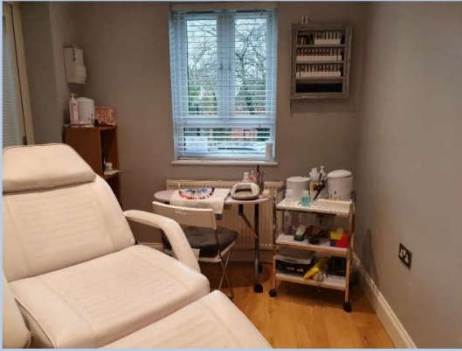
Donna Saggerson

07715 553146

Beauty & Waxing Specialist

Home based salon in the village with 16 yrs experience

- Waxing
 - Manicures
 - Pedicures
 - Gel nails
 - Eyelash / Eyebrow Tint*
- *24hr patch test required prior to treatment



**YOU COULD ADVERTISE YOUR
COMPANY OR SERVICES
HERE FOR JUST £30 A YEAR
(6 BIMONTHLY EDITIONS)
IF YOU ARE INTERESTED THEN
PLEASE EMAIL:**

enquiries@shcommunityassociation.co.uk

**OR CALL GREG NOBLE ON
01525 270744**



DLG Services

Grass Cutting

also

Weed Control

**City &
Guilds**
Believe you can

- **Grass Cutting**
 - Mowing and Treatment
- **Patio/Driveway Weed Control**
 - Pesticide Spraying
- **Fully Licensed**
 - Qualified Pesticide Sprayer
 - See dlgservices online @ Facebook/Twitter
 - www.dlgservices.co.uk

Call Dave 01525 270713

Free Quote 07702 673539



THE BRICKHILL
FLOWER ^{CO.}

Local florist based
in Great Brickhill

Offering beautiful blooms for:

- Weddings
- Funerals
- Events
- Special Occasions

Please get in touch:

Hello@thebrickhillflowercompany.co.uk

Also find me on
Facebook & Instagram
[@thebrickhillflowercompany](https://www.instagram.com/thebrickhillflowercompany)





I would like to start with a big thankyou to all the villagers who supported the scout's cake stall on the village green last month. After several weeks of planning and baking all the scouts gained their fundraising badge and managed to raise over £200 to boost the groups funds. Well done and thank you to everyone involved.

The cubs have been equally busy doing their own baking challenge (their spooky cookies didn't quite make the cake stall!). They have also had themed evenings focusing on environmental issues where they made their own COP26 pledges as well as a fun session making Bletchley Park code wheels as part of a remembrance themed evening.

As a group we have joined forces to play our own version of "The cube" as well as getting out and about on a night hike. As we run up to Christmas we will be preparing our contribution for the annual Church Xmas Tree event before heading off to the other side of the county for the groups Christmas Camp weekend. As well as the traditional wide games, camp fires, full xmas dinner and backwoods cooking we will be having roman themed activities including stone pillar stacking and Sagittarii training.

We still have places available for boys and girls aged 8 and over, so please let us know if you have a young person who would like to try us out in the New Year. Our current members come from a wide area including Newton Leys, The Brickhills, Stoke Hammond and Milton Keynes.



Dave Pollington - Group Scout Leader – High Ash Scout Group:

Dave.Pollington@mkscouts.org

MAVIS'S QUIZ

Answers to the last quiz and if you remember you had to name the Classic Album and the artist/s from the LP Cover image and first letter clues.



- (1) ABBEY ROAD by THE BEATLES
- (2) TUBULAR BELLS by MIKE OLDFIELD
- (3) RUMOURS by FLEETWOOD MAC
- (4) STICKY FINGERS by THE ROLLING STONES
- (5) AVALON by ROXY MUSIC (6) BLACKSTAR by DAVID BOWIE
- (7) BAT OUT OF HELL by MEATLOAF (8) DARK SIDE OF THE MOON by PINK FLOYD
- (9) HOTEL CALIFORNIA by THE EAGLES (10) HOW DARE YOU – 10CC



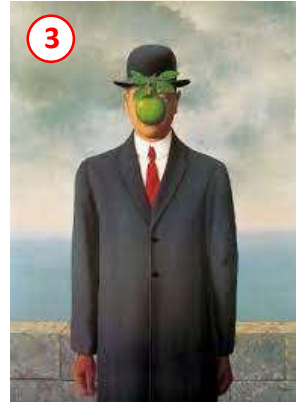
Still going with the pictorial theme, can you name the title of these famous paintings and the artist who painted them. To assist we've given you the first letter of the title and then the first letter of the artist.



1



2



3

W _ _ _ M _ _ _

J _ _ M _ _ W _ _ _

T _ _ S _ _ O _ _ M _ _ _

R _ _ M _ _ _



4

T _ _ H _ _ W _ _ _

J _ _ C _ _ _



6

T _ _ L _ _ C _ _ _

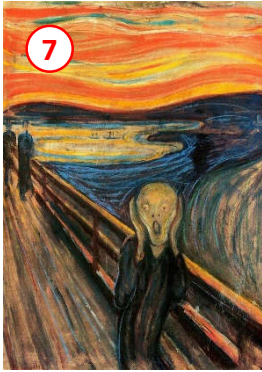
F _ _ H _ _ _



5

A _ _ G _ _ _

G _ _ W _ _ _



7

Best of luck,
the answers
In the next
edition.



8

T _ S _ _ _
E _ _ _ M _

T _ B _ _ O _ V _ _
S _ _ _ B _ _ _



9

T _ _ W _ _ _
_ W _ _ _
P _ _ _ _
_ P _ _ _



10

T _ P _ _ O _ M _ _
_ S _ _ _ D _ _ _

WHITE WATER

EXTERIOR CLEANING SPECIALISTS

Driveway & Patio Cleaning

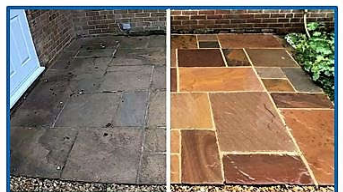
“We use an innovative, biodegradable method that eliminates dirt & kills mould, blackspot & algae, sanitising the surface. The results last 4 to 6 times longer than pressure washing alone.”

- We also clean:
- Conservatories
 - Decking
 - UPVC
 - Windows
 - Solar Panels

01525 234120 | 07807 973871

email: info@white-water.co.uk

www.white-water.co.uk



Stoke Hammond Service Centre Bletchley

UNIT D, LYON ROAD, BLETCHLEY MK1 1EX

Tel: 01908 371110 & 01525 279009

Tyres ★ Exhausts ★ Servicing ★ MOTs ★ Diagnostics ★ Clutch ★ Engine

Established in 2006 and now one of the most accredited service centres around.



- ★ Free local collection and return.
- ★ Very competitive prices.
- ★ RAC inspected - 100%.
- ★ AA Select Garage.
- ★ MOT Testing Station.
- ★ Trading Standards, CAB, CVTS Approved.
- ★ All makes of car catered for.
- ★ Pleasant waiting area with hot drinks machine.



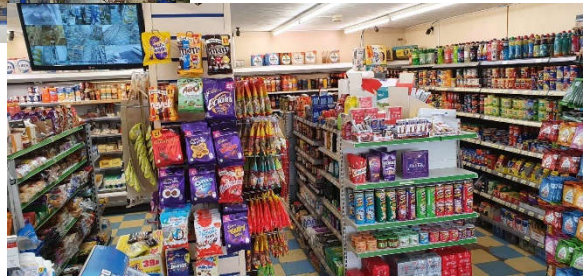
STOKE HAMMOND LOCAL STORE & POST OFFICE



Opening Hours:

Mon-Sat: 6.30am till 9.00pm

Sun: 8.00am till 9.00pm



"A FRIENDLY WELCOME GUARANTEED"

Our Products:

News & Magazines	Beers, Wines & Spirits	Pet Food
Confectionary & Snacks	Soft Drinks	Health & Beauty Products
Bread (inc. Turney's) & Cakes	Tobacco & Cigarettes	Frozen Food & Ice Creams
Dairy Products	Groceries	Greeting Cards
Medicines	Baby Food & other Products	Household Sundries
Sandwiches & Ready Meals	Fruit & Vegetables	Stationary Items

Other Services:

- * Pay-point/Top up services will be available. * Cash machine will be available.
- * Photocopying * Pies & Coffee will be introduced in the morning.



NEWS FROM NEWTON LEYS SOUTH (NLS)

The grass around Callow Mound has finally been cut by Taylor Wimpey and it now gives access to the “Alphonos” brickworks art installation. This was the centrepiece for the Remembrance service held at the mound. The Children from Newton Leys Primary School and other local nurseries made poppies from egg boxes and painted them red. A service was held by Rev Ben Thorpe along with a 2 minutes’ silence. The poppies were a great addition to the mound and thought provoking too.



The public enquiry relating to planning permission for the Bletchley Landfill extension took place on the 19th October in Milton Keynes. The inspector is expected to release his decision in early Jan 22.

Halloween was a great spectacle and seems to be getting bigger every year. There was some great effort placed into decorating houses and some wonderful costumes were seen out trick or treating.

San Andreas Road is starting to be prepared for handover to the council. You may notice blue spray paint on kerb stones and pavements, these are areas that need to be changed or repaired. This may some time to complete.

A planning application has been submitted to build a nursery close to Asda where the blue fencing was erected 2 years ago. Hopefully it will be approved and work

MADISONS HAIR SALON




Madisons

Hair & Beauty

17 Greenway
Newton Longville
Milton Keynes
MK17 0AP
01908 632 050



 Madisons Hair Salon

 @madisonhairandbeauty

can commence to finish off the commercial area. It may also potentially bring a few job vacancies for local people.

The Parish Council will soon be sending out information to each household on the Neighbourhood Plan, this is for the wider parish but needs input from our residents so that we have a say in what goes on in the Parish. Please take an active part in this plan. More information will follow.

The play park has been fixed, after about 18 months, Joanne the Clerk continues to battle to get these issues raised and completed. Thank you to Jo.

Christmas decorations have started to appear so let's try to light up Newton Leys ready for Santa.

Keep smiling, only a few weeks until Christmas!

Councillor Stephen McNally

Could you do with a helping hand?

Talk to Extra Help for the complete solution



We can help with:

- Cleaning and tidying
- Ironing
- Companionship
- Escort (to appointments or activities - clubs, shows, etc.
- Dog walking
- Household maintenance
- Shopping errands
- Meal preparation
- Parents help

....and so much more!
From £15 per hour.



Tel: 01908 596590
www.extra-help.co.uk



EXTRA HELP®
a helping hand

CARPET KLEAN

We're a professional carpet and upholstery cleaning service covering Milton Keynes and the surrounding areas.

We only use top of the range cleaning equipment so you can be sure the service will be fast and professional.

BOOK YOUR CLEAN TODAY
01908 970 960
or email: info@CarpetKlean.co.uk

Follow us on Facebook @CarpetKlean



Introducing your local carpet, sofa, chair & rug cleaning specialist...

Rodney Nowik





THE Lindens

The Lindens is a privately owned care home, set in the tranquil Buckinghamshire countryside, offering individual care for our long-term residents and those visiting us for respite care. We provide a real 'home from home' experience for all our residents and their visitors.

- ***24 Hour expert care delivered with compassion***
- ***Well-appointed double & single en-suite rooms with care call systems, televisions, DVD players and Internet facilities***
- ***Meals prepared in house using locally sourced ingredients, catering for individual dietary needs***
- ***Visitor's centre***
- ***Tea room available for our residents***

The Lindens Residential Care Home, Stoke Road,
Stoke Hammond, Buckinghamshire, MK17 9BN

Tel: 01908 371705 E-Mail: info@careatthelindens.co.uk

Web: www.careatthelindens.co.uk

THE Lindens

Our Maintenance Team have been busy planting, developing and expanding our gardens. Taylor Wimpey South Midlands kindly donated beautiful plants, shrubs and flowers from Vale View their nearby Willow Lake development, which they were relocating due to building. These have been positioned around the grounds, some in the Meadow Gardens to the side of the home accessed by the Terrace, with others to the front of the old house, a great addition for our residents and visitors to enjoy.



Christmas Day Lunch

Starter

Sweet Potato & Butternut Squash Soup
with Garlic Toast
Or
Whipped Brie Salad with Dates & Candied
Walnuts

Main Course

Roast Turkey with
Pork, Sage & Onion Stuffing
Or
Red Pepper Potato Ricotta Frittata
Pigs in Blankets,
Herbed Roast Potatoes,
Honey Roasted Vegetables,
Brussels Sprouts with Hazelnuts,
Creamed Mashed Potatoes

Dessert

Traditional Christmas Pudding,
Brandy Sauce, Cream or Custard
Red Velvet Cake & Vanilla Ice Cream
Gluten Free Chocolate Cherry Cheesecake

With Christmas growing nearer our planning for the festive period has started, aiming as usual to make a fabulous celebration with delicious festive meals and treats for our residents.

If you are looking for a career in Care or to develop your skills further, give us a call we will be pleased to hear from you.

Wishing you all a Peaceful and Merry Christmas, with happy and healthy times ahead.

Michael Hannelly

Director

The Lindens

Stoke Road, Stoke Hammond, Buckinghamshire, MK17 9BN. Tel 01908 371705

Email: info@careatthelindens.co.uk Web: www.careatthelindens.co.uk

PICTURE FRAMING
by
COUNTRY FRAME



EST 1984

The Complete Picture Framing Service

Expert advice and framing on:
Prints, Posters Water-Colours, Oil Paintings, 3D objects and all types of needlework

A huge range of mouldings to suit everything
and over 100 different colours of quality mounting boards

Contact: **Paul Body**

10 Fishweir, off Chapel Square, Stewkley, Leighton Buzzard, LU7 0HB

www.countryframe.co.uk

T: 01525 • 240163 M: 07771 • 508805



**J & J LUXFORD LTD
BUILDERS**

For all your building needs
Project managed
From design to completion

**EXTENSIONS / NEW
BUILDS**

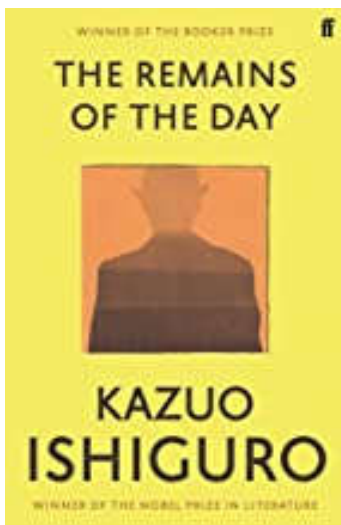
Contact us
Office: 01525 240637
07885455203 –
07860726741

12 Ivy Lane
Stewkley
Leighton Buzzard
Beds LU7 0EN

Tel: 01525 240637 & 01525 240746
Mob: 07860 726741 & 07885 455203
Fax: 01525 240827

www.luxfordbuilders.co.uk

STOKE HAMMOND BOOK CLUB



The Remains of the Day - by Kazuo Ishiguro

Once again, we were all aware that this book was made in to a very successful film with an excellent cast including Emma Thompson and Anthony Hopkins and therefore, we had high hopes for it. The story is set in the early nineteen hundreds and concerns Stevens a butler who sees his occupation as a profession and is amazingly loyal to his employer, Lord Darlington. He is obsessed with being the perfect butler and expects the staff under him to feel the same. He is a bit mystified when meetings are held at the stately home involving important people including a high ranking German but feels that it is really none of

his business although later it was thought that Lord Darlington was a Nazi sympathiser. This aspect added a bit more interest to the story.

Stevens seems to have a love/hate relationship with the housekeeper and when, many years after she has left, a letter is received from her leading him to think and hope that possibly she wants to return to her old job. With his new employer's agreement, he sets off to the west country to see her and possibly get her back to Darlington Hall.

It was agreed that the writing was a delight and the author had a perfect understanding of a certain type of 'Englishness' which was described perfectly. However, some mentioned that they found it rather hard going and although they felt that there was a bit too much detail about the virtues of being

Louisa Harris Pilates

Learn to move better to feel better!

PRIVATE PILATES EQUIPMENT STUDIO



- Reformer
- Cadillac
- Chair
- Matwork
- Private 1:1s & 2:1s
- Specialist teacher
- Outdoor matwork
- Zoom classes

MK & LEIGHTON BUZZARD STUDIO
Nr. Stoke Hammond and Great Brickhill
louisa.pilates@gmail.com
www.louisaharrisPilates.co.uk

Plus Matwork classes at Place Eight Wellness,
Swanbourne - www.placeeightwellness.co.uk

Mutleys Dog Grooming



Located in Stoke Hammond

Call Tina on 07725 404714

- Pick up and drop off service can be arranged
- Nail clipping
- Specialised breed stripping
- All grooming requirements catered for
- Evening and weekends appointments available

Do you want clean carpets?

- Simply the **BEST** cleaning you can get
- The most modern, up-to-date equipment
- Local owner operator - 90% of my work is via recommendation or repeat business
- Your Upholstery and carpets won't be left wet, only damp after it has been cleaned
- 100% safe chemicals – no 'sticky' after feel
- **FREE SURVEY & QUOTE**

Please contact Darren Batchelor on:

Tel: 01525 851 811 or Mobile: 07790 034 818

Email: sales@deep-cleaners.co.uk

www.deep-cleaners.co.uk

A member of Prodean, The Professional Cleaners Organisation

A circular graphic with a white border and a black background, containing white text. It is positioned over a background image of a carpet cleaning machine.

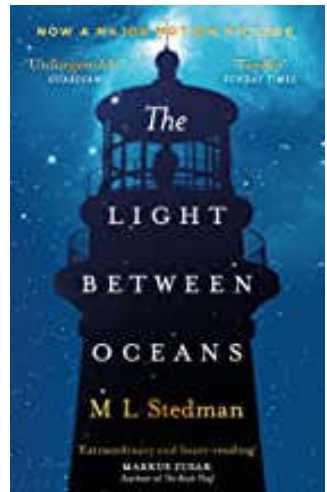
We are still operating during these uncertain times.
Please call for details.

'in service' we heard from someone's experience that it was a very true description of how butlers behave. Others in the group felt sorry for Stevens as he was obviously stuck in a rut and was emotionally unfulfilled. Several members of the club had no empathy with him at all and we were all disappointed that it did not have a happy ending !

Conclusion: worth a read if just for the delightful language.

The Light between Two Oceans - by M.L.Stedman

The main character is Tom a WW1 veteran whose civvy job is maintaining an important lighthouse in a remote part of Australia. He is delighted to have found a lovely wife to join him in his solitary life but Izzy is desperate to have a child. After two miscarriages and a still birth her prayers are answered when a baby washes up on shore in a rowboat. Tom thinks they should notify the Authorities but gives in to Izzy's pleadings to keep the baby girl. Several years later they meet by chance the child's biological mother, who has no idea what happened to her baby. They must make a decision that will affect the lives of four people in particular not to mention other members of the families.



On the whole the group enjoyed the book finding the descriptions of the island and even the workings of the lighthouse fascinating. They felt empathy with Tom who still suffered from guilt about things that happened in the war and the situation added to his guilt as he was convinced that they should admit that they had the child. Although it was mentioned that it was a bit far fetched most of us read it avidly, anxious to find out how it concluded. However, an illustration of how different people react to different situations - one of us thought the story immoral and didn't like it at all and a couple of us had slight misgivings about the actions of Tom and Izzy. It was certainly an unusual tale and we all agreed that it was excellent for the Author's first novel.

Conclusion: Different and a page-turner.

Buttons Pre-School

- * Abbeys, Bletchley
- * Bow Brickhill
- * Brooklands Farm
- * Giffard Park
- * Great Linford
- * Newton Leys
- * Stoke Hammond
- * Wolverton
- * Willen Pavillion
- * Wavendon Gate

15 and 30 hours funded sessions.
Children from 18 months,
private sessions also available.

Sites across Milton Keynes and Bucks, flexible hours including breakfast club, afterschool club and Wrap around care. Forest school locations. Contact us for details of your nearest pre-school.

Tel: (01525) 270501 / 07973 158368

Email: enquiries@buttonspreschool.co.uk
www.buttonspreschools.co.uk



READERS LETTERS



Our Village,

We moved to this our village some 60 years ago as we wanted our children to grow up in a village community and not, the then, New City of Milton Keynes, for those of you who are new to our Village I am assuming that this is what you also want for your lives and families or you would have moved to an estate in Milton Keynes and not to a village community.

At that time, we had: -

*A Village school in what is now Old School Lane – now gone - A house
A Church Hall in Church Road -now gone- a house - the hall was used apart from other Church events as an extra class room for the school, with children walking from the school to the hall in a crocodile past the-*

*Village Pond- now gone – filled in at some time for whatever reason,
Village School - moved to Bragenham Side- now gone- children bussed up to
Brickhill-School- Village school now - a community centre*

A village church – thankfully still there, sadly the bells are not in working order.

A Chappell – which used to hold Coffee morning and the women’s institute apart from the Chappell services – now gone- to be converted to a Children’s nursery.

A village Pub – hanging on maybe by its very toenail, let’s all hope it will open soon as a pub.

A village green – still there

A village Hall – Off of the green. Used for youth Club, Bingo, Jumble sales etc. now gone- houses

A village Pump -Still there- although not in working order

A village garage with Petrol Pumps – now gone -Houses

A village Shop – again thankfully still there

The loss of so many of the old village social amenities, causing isolation with the inherent mental health implications is quite sad, some progress is of



High Ash C of E School
Parish Council Newsletter

Grow Together Shine Forever

'Let your light shine' Matthew 5:16

December 2021 - January 2022

Christmas Events and Celebrations!

We are busy preparing for our festive celebrations and at this stage, we are still intending to go ahead with all our planned Christmas events yet we will keep this under review. Our aim is to do as much as we normally would as safely as we can!

Nativity Productions - we are planning to hold both a Foundation and a Year 1-2 Nativity where we can invite parents to watch. We are limiting places and ensuring Covid protocols are being followed.

Christmas Tree Walk - KS2 (Yr 3-6) will walk to the woods on Friday 3rd December for the Christmas Tree Service and parents will be invited to walk with us to the woods from school. Fdn and KS1 (Yr R-2) - will have an outdoor service at school at 2:30pm on Friday 3rd December and parents will be invited to this. They will sing carols, say prayers and have a Christmas biscuit!

Christingle - we are hoping to hold a KS1 Christingle Service and Christmas Carol Service for KS2 but we are just checking the capacity of the Church before we know whether we can invite parents along to these events.

Christmas Break

School finishes on Friday 17th December 2021 and will return on Wednesday 5th January 2022.

Starting School in September 2022

If your child is due to start school in September 2022 and you are interested in our lovely school, then please look at our website for more information about the facilities we have here at High Ash C E School: www.highashschool.co.uk

Applications for Primary School places are completed online and for Buckinghamshire residents the closing date is midnight on 15 January 2022. To apply, please click on link below:

www.buckscc.gov.uk/apply-for-a-school-place/

Sarah J Boyce

Sarah Boyce
Headteacher
headteacher@highash.bucks.sch.uk

course to be embraced.

But there is still the chance to save some of the old village assets, such as the Pub, and the village Pond, in this letter I am petitioning the Parish Council to reinstate the village pond. Who wants a pond you might think, but why not take a stroll up to the village Church sit with your children on the bench there (provided by the Parish Council) and show our children the Frogs, Toads, dragon flies and other wildlife that will in habit a pond, maybe feed a passing duck? Visit the graves of your friends and relatives and sit awhile by the pond and rest. Plant the surrounding area with Wild flowers., make it a restful feature in the oldest part of our village.

Let's make it a place to visit, a place to meet and have a chat with neighbours..... or not, it's up to you.

Elaine Sharkey

STOKE HAMMOND GARDENING CLUB



At last, we were able to meet up for the first time in almost two years ! Our fish and chip evening was very well attended and it was brilliant to see everyone again - the fish and chips were hot and delicious, and the quiz went down well. Thanks to everyone's generosity the raffle raised £130 which will go straight into the kitty to assist with next year's events and everyone seemed to have had a good time. We were eternally grateful to the Sports Club for setting up and clearing away the tables and chairs for us and all in all it was such a good kick off for the Club's revival. We are all looking forward to an eventful 2022 so fingers crossed that we are now back on track. On that note our next event will be our AGM/ social evening at the beginning of March and everyone will be reminded of the date, venue etc. in good time.

Thanks for everyone's support - Happy Christmas and a healthy and busy New Year to all our Members.

PLANNING APPLICATION NEWS & UPDATES OCT & NOV 2021

In this section you will find details of planning applications received, comments made by your Parish Council, and any updates on previous planning applications.

NEW PLANNING APPLICATIONS:

21/04120/APP Stoke Lodge, Lodge Lane, Stoke Hammond MK17 9BU

Erection of a single storey home office and gym/games building.

Stoke Lodge sits within the Conservation Area of Stoke Hammond, and this very much needed to be a consideration. The PC felt that although only single story the size and nature of the building would have a dramatic impact on Stoke Lodge and the views to same, and for these reasons the PC resolved to object to this application.

21/03509/APP 20 Coleman Road, Bletchley MK3 5QD

Loft conversion with new roof over, rear and front dormers

This application was very similar to a previous application 21/02738/APP that was refused on the grounds of being oversized and out of keeping with the appearance of neighbouring properties. Other than a very slight reduction in the width of the proposed loft conversion, the PC felt the previous grounds for refusal were still applicable and objected to this application.

21/03250/APP 8 Brookfields, Stoke Hammond MK17 9FR

First Floor extension above double garage.

Once again, an application very similar to a previously refused application 21/00064/APP on the grounds that the extension was overbearing in size and out of keeping with the style of neighbouring properties. This new application had a slight reduction to the originally proposed design, but the PC felt the previous grounds for refusal still applied and objected to this new application.

21/02666/APP Oakwood Grove Farm, Church Road, Stoke Hammond MK17 9BT

Single storey rear extension

Here we are again, another application very similar to a previous 21/02666/APP which was refused on the grounds that the planners thought the proposed extensions were both incongruous and unsympathetic to the character of this barn conversion. This new application although smaller in scale could be deemed to still fall foul of the planner's original grounds for refusal. For this reason, the PC decided to postpone their decision until Heritage had made their comments. Heritage have since applied certain conditions regarding materials and finishes but not opposed. The PC have subsequently made No Objection to this planning application.

PLANNING UPDATES:

21/03310/COUAR Barn at Bragenham Side, Stoke Hammond MK17 9DB

Determination as to whether prior approval is required in respect of transport & highway impact, noise, contamination risk, flooding and locational considerations for the conversion of agricultural barn into one dwelling house (Class Q(a)) and in relation to design and external appearance of the buildings (Class Q(b))

Approved by planning

For further information/updates on these or other planning applications in our locality, please visit the following website entering the application reference or use the map search facility - <https://www.aylesburyvaledc.gov.uk/search-planning-licensing-applications>

St Luke's Church News

Review:

Harvest: Our harvest festival made the church look wonderful. Packaged produce was donated to Bletchley food cupboard and fresh goods to Willen Hospice. We enjoyed a delicious Harvest Lunch and visitors caught up with one another over the meal.

Gift Open day: Thank you to everyone who contributed to our restoration fund appeal. We received £1778 and with gift aid added in, £2222! We enjoyed sharing refreshments with you all and hope you did too.



Remembrance Day: Despite a slightly disappointing turnout, it was particularly poignant this year that we were able to celebrate the unveiling of a plaque to mark the important role of RAF Stoke Hammond (in Dorcas Lane). The official village war memorial (those killed in later wars) is inside the church. This year an additional plaque was added to it in memory of those who worked at RAF Stoke Hammond. Many thanks to Nick Ellins for all the research he undertook to enable this to take place.



We've been so busy, I've run out of space to review the Community Breakfast, and Prayer morning for the COP conference but suffice to say we had a great time at both. Our thanks go to Geoff for taking on the role of chef at the breakfast and newcomer Mary for helping with the washing up.

Christmas Fayre: (27th November, SHCC) As we go to press, it hasn't yet taken place, but I'm sure it will go well.

Church Activities:

Food Bank: The food bank is running well with an unpredictable pattern! Many thanks go to those who continue to support it. To those who are considering using it, please remember that food is freely available at any time in the church porch to anyone in need, particularly over the Christmas period.



Prayers: Our prayer group is happy to take prayer requests from anyone who would like prayers, in complete confidence. Please contact a church member if you have a prayer request.

Path repairs: We have had 3 quotes for our path, chosen our preferred business and are now applying for grant funding to enable the work to be able to take place.



Cleaners: We are still looking for volunteers to help on the church cleaning rota (once every 6 weeks). We'd also appreciate anyone who'd be interested in helping with a one off clean getting in touch. If you could help, please contact Hazel on 270404. Thank you!

“Enquiry” event: Just to let you know, we are planning a series of events starting in January aimed at those who would like to explore the Christian faith. Further details will be released via the village Facebook page or leaflets round the village or contact us (below) if you think you may be interested.

Community and Social: (Subject to Government guidelines)

Community Breakfasts: We'll be having our Community Breakfast on **Saturday 11th December from 8.30 – 10.30am**. We'll be enjoying all the usual breakfast fayre and it would be lovely to see you, however we're taking a break for January so the next breakfast won't be till February.

Carols on the Green: Back by popular request: carol singing is on **Sunday 19th Dec from 3.30-4.30pm**. Wrap up warm and bring your singing voices with you. We'll provide the mulled wine (or soft drink) and mince pies. Hope to see you there!



Contact us (details below) if you'd like to go on our (GDPR) email list for reminders of social events or our email list for services and social events.

Services: (Subject to Government guidelines) See full listing elsewhere in the newsletter

Health & Safety: Over the Christmas period, we will be observing the usual hygiene procedures in church.

Christingle: On **Sunday 5th December at 4pm** participants will be given an orange with a candle to represent Christ in the world. During the service, the candles are lit, and lights switched off. The service is aimed at children but open to everyone. Any children who weren't able to go to the High Ash Christingle service are particularly welcome, (as

are visiting grandchildren and friends)!

Carol Service: We will be having our service of 9 Lessons and Carols at St Luke's on **Sunday 12th December at 4pm**. The benefice choir will be joining us, so please join us and sing your heart out!

Crib Service: Held at 4pm on **Christmas Eve**, the Crib service is a 30-40min service aimed at children, but adults are also welcome to attend (even without children!). Come along and share the real meaning of Christmas with the children.



Christmas Midnight Holy Communion: This will be taking place at **11.30 on Christmas Eve** so that the act of communion will take place after midnight on Christmas day. It's a spiritually moving service – come and join us to find out.

Baptism: On **Sunday 9th January at 11am** we will be baptising baby Olivia at the family service – we're looking forward to welcoming her!

Fundraising:

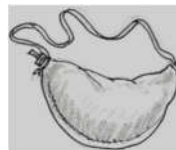
Christmas Tree festival: After you've enjoyed your **11th December** Community breakfast, take a stroll up Church Rd and join us at the Christmas tree festival which is on from **10am to 3.30pm**. There'll be



a display of Christmas trees decorated by organisations in the village based on a theme of children's rhymes. Enjoy a cup of tea or coffee and a cake, or if you wait until noon, a bowl of soup and a roll. If you've other plans on Saturday, we'll be doing it again on **Sunday 12th from 10 till 3** (which will give us time to clear up before the Carol Service!)

Christmas hamper: Tickets for this delicious collection of Christmas food items go on sale starting from the Christmas fayre, continue at the Christmas Tree festival and are drawn at the Carol service.

Bible verse of the month: Mark 2 v 21-22 ²¹ 'No one sews a patch of unshrunk cloth on an old garment. Otherwise, the new piece will pull away from the old, making the tear worse. ²² And no one pours new wine into old wineskins.



Otherwise, the wine will burst the skins, and both the wine and the wineskins will be ruined. No, they pour new wine into new wineskins.'

What does it mean? In literal terms, the meaning is obvious, but metaphorically it's more complex. The context for Jesus' quote is that he was talking about the rigidity of the Pharisees in their fasting and teaching of the laws. They were the old garment or the old wineskins: Jesus was saying that life in him was about a fresh way of living and worshipping based on love, healing and forgiving (loving one's neighbour as oneself). This was the new wine. Are you ready for a New Year's resolution in your life?

St Luke's wishes you all a Merry Christmas and a Happy New Year!

Church Benefice Website: www.brickhillschurches.org.uk.



St Luke's offers baptisms, weddings and funerals which are now freely available. Please contact the Rector if you'd like to discuss any of these. The Rector's contact details are on the website. His phone goes straight to an answerphone but he'll reply as soon as he's able, or contact a Churchwarden. The

Rector's day off is Monday. If you have a prayer request or enquiry, please ring

Churchwardens: Harry, on 07773065271; Diane, on 270409 or Treasurer: John, on 270202.

MAP
(Not to scale)



VILLAGE DIARY

Saturday 27 th Nov	St Luke's Xmas Fayre – Community Centre 14.00 – 16.00
Saturday 11 th Dec	Community Breakfast – Community Centre 08.30 – 10.30
Saturday 11 th Dec	Christmas Tree Festival – St Luke's Church 10.00 – 15.30
Sunday 12 th Dec	Christmas Tree Festival – St Luke's Church 10.00 – 15.00
Thursday 9 th Dec	Neighbourhood Plan Open Zoom Session – 19.30 (See page 3 for Zoom log in details)
Wednesday 15 th Dec	Neighbourhood Plan Open Evening – Community Centre 19.30 – 21.30
Saturday 18 th Dec	Senior Citizens Xmas Lunch – Community Centre – 13.00
Saturday 18 th Dec	Christmas Draw Event - Sports Club – 19.30
Sunday 19 th Dec	St Luke's Carols on the Green – 15.30 – 16.30
Tuesday 11 th Jan	Parish Council Meeting – Community Centre – 19.30

For Further Church dates/times please see 'Church Services' on page 4.

ORGANISATIONS THAT USE THE COMMUNITY CENTRE

High Ash Scouts, Cubs (Beavers)

Every Thursday 17.30 – 21.30hrs

Contact: Dave Pollington 01525 270864

Buttons Pre-School

Monday – Friday 09.00 – 15.00hrs

Contact: 01525 270501/07973 158368

To Hire the Hall please telephone 07555 711929 or e-mail: enquiries@shcommunityassociation.co.uk

SH NEWS – ADVERTISING RATES

For 6 bimonthly editions: FULL Page - **£85.00** HALF Page - **£50.00** QTR Page - **£30.00**

To upgrade to full colour on rear cover, additional per edition cost:

FULL Page – plus £15.00 HALF Page - plus £10.00 QUARTER Page - plus £5.00

Note: Upgrading to full colour is on a per edition basis, not a commitment for 6 editions

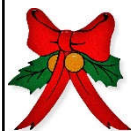
Buckinghamshire Council	0300-131-6000
Aylesbury Vale Area – Buckinghamshire Council	01296-585858
Community Transport Co-ordinator	07729-699488
Registrar (<i>Births & Deaths</i>)	01296-383005
Registrar (<i>Marriages</i>)	01296-382481
Fly-Tipping on Roads	01296-382416
Social Care Services (<i>Emergency Duty</i>)	0800-999-7677
MK General Hospital	01908-660033
Stoke Mandeville Hospital	01296-315000
Luton & Dunstable Hospital	01582-491122
SH Gardening Club (<i>Eileen Curry</i>)	01525-270858
Clerk to the Parish Council (<i>Jo Simonds</i>)	07818-016108
Parish Council Chairman (<i>Malcolm Newing</i>)	07702 067966
Gt Brickhill Ward Councillor (<i>Phil Gomm</i>)	07778 117647
Gt Brickhill Ward Councillor (<i>Jilly Jordan</i>)	07740 308468
Gt Brickhill Ward Councillor (<i>Iain Macpherson</i>)	Not Available
MP - Buckinghamshire. (<i>Greg Smith</i>)	01296-714240
High Ash School	01525-261620
St Luke's Church (<i>Revd John Waller</i>)	01525-261062
St Luke's Church Warden (<i>Diane Webber</i>)	01525-270409
St Luke's Church Warden (<i>Harry Davies</i>)	01234-822780
Stewkley Methodist Church (<i>Revd Donna Broadbent-Kelly</i>)	01525-240589

Police non-emergency number 101

NHS Helpline non-emergency number 111

EDITORS NOTE

So, Christmas is almost upon us, and with fingers and everything else crossed it does seem that for this year and unlike last, we will be able to enjoy the celebrations with our family and friends. But before that there are many festive activities going on such as the Senior Citizens Lunch and Carols on the Green. Details for all these events can be found in the Church News section and on the Village Diary Page.



As usual for this time of year, I must extend an enormous thank you to all those involved in helping make the SH & NLS News happen, from article and feature contributors, to the advertisers and of course the small team of volunteers who deliver the publication to all your homes.



Finally, may I wish you all a most Merry of Xmas and the Happiest of New Years.

May I please have copy for the February/March 2022 issue by the **20th January**
 Greg Noble, Oak Farm, Bragenham Side, Stoke Hammond. MK17 9DB
 01525 270744 E-mail: gregnoble1980@aol.com



WASTE COLLECTION DATES

STOKE HAMMOND VILLAGE & NEWTON LEYS SOUTH

Waste Bin: 	Recycling Bin:  <small>Paper, glass, cardboard, plastics, cartons, cans & tins</small>	Food Waste Bin:  <small>Non-recyclable or compostable.</small>	Garden Waste Bin: 
Wednesday 1Dec		Wednesday 1 Dec	
	Wednesday 8 Dec	Wednesday 8 Dec	
Wednesday 15 Dec		Wednesday 15 Dec	
	Wednesday 22 Dec	Wednesday 22 Dec	
Friday 31 Dec		Friday 31 Dec	
	Saturday 8 Jan	Saturday 8 Jan	
Friday 14 Jan		Friday 14 Jan	
	Thursday 20 Jan	Thursday 20 Jan	
Wednesday 26 Jan		Wednesday 26 Jan	Wednesday 26 Jan
	Wednesday 2 Feb	Wednesday 2 Feb	
Wednesday 9 Feb		Wednesday 9 Feb	Wednesday 9 Feb

St Luke's Church

Christmas Tree Festival

11th - 12th
December 2021

Theme:

**Children's
Songs and Poems**

St Luke's Church
Church Road/School Lane
Stoke Hammond
MK17 9BP

Opening Times

10:30am - 3:30pm Saturday 11th December

10:30am - 3:00pm Sunday 12th December

*Tea and Coffee available from 10:30am
Soup and Rolls from Midday*