

SH & NLS NEWS

Stoke Hammond & Newton Leys South

INSIDE THIS EDITION:
NEWS FROM NEWTON LEYS SOUTH
PARISH COUNCIL NEWS
THE BOOK CLUB
CHURCH NEWS
MAVIS'S QUIZ
GDM & MUCH MORE

October – November 2023
www.stokehammondpc.com



*One of the 3 new permanent
solar powered Mobile Vehicle
Activated Signs (MVAS)
installed by your Parish
Council in September*



Simply the BEST Carpet & Upholstery cleaning you can get

- The most modern, up-to-date equipment
 - Hot Water Extraction
 - Stain Removal Service
- Most of my work is recommendations or repeat business
- I carry my own water and remove all waste water
- Commercial, Industrial and residential Carpet & Upholstery Cleaning service

*Please Call **Darren Batchelor** for a free quotation on:*

**01525 851 811 or
Mobile 07790 034818**

Email : sales@deep-cleaners.co.uk
Website : deep-cleaners.co.uk

Approved Prochem Trained



Treatments you can Trust



Bespoke Facials
Advanced Facials

Massage

Reflexology

Aesthetic Treatments

Vitamin Boosters

Lip Blush

Waxing

Tinting

Lash & Brow Treatments

Manicures

Pedicures

Gels

ALL of our Aesthetic treatments are carried out by a qualified Nurse

Please drop me a message to find out more information
Bookings by Appointment: ONLY

Mobile: 07715 773222

Email : Firstclassbeauty@bigmail.com

Website: Firstclassbeauty-beauty.co.uk



Firstclassbeauty.co.uk

Brickhills and Stoke Hammond Churches

Being Thankful



Dear friends,

We all know how good it feels when someone takes the trouble to say 'thank you' to us, and show their appreciation for something we have done.

Our churches hold Harvest Festival services at this time of year, as they have done over many centuries. To some people this may seem like an old-fashioned or even an irrelevant thing to do, but we think that it is still important.

We celebrate Harvest because we believe that everything we have is a gift from God, and so it is important to take this opportunity to pause, and reflect on all that we have received, and be thankful.

And it can be a reminder for all of us of the importance of being thankful, and remembering to take the time to say 'thank you', to God, and to each other.

Revd John Waller

ST LUKE'S STOKE HAMMOND CHURCH SERVICE DATES TO NOVEMBER 2023 OCTOBER

1st Oct: 11.00am Family Service – DW

8th Oct: 11.00am Family Service with HC Benefice - JW

Note: To be held at St Mary's, Great Brickhill
This service will be attended by exchange students from Malawi and will be followed by a bring and share lunch.

15th Oct: 09.30am Morning Worship - JH

22nd Oct: 09.30am St Luke's Day Holy Communion – JW

29th Oct: 10.00am All Souls Benefice Service – JW

Note: To be held at St Mary's, Little Brickhill



Refreshments unless otherwise stated are served after all services at St Luke's Church

NOVEMBER

5th Nov: 09.30am Café Church – tba

12th Nov: 10.45am Remembrance Service – tba

19th Nov: 10.00am Benefice Service with HC – JW

Note: To be held at All Saints, Bow Brickhill

26th Nov: 09.30am Holy Communion - JW

JW – Rev John Waller

JH – Jeremy Hopkinson

DW – David Webber

Details of church services are posted on the Benefice Website:

www.brickhillchurches.org.uk

Your 5 Star Rated Stoke Hammond Estate Agents



If you're thinking of
moving...

Start by getting a
**Hometrack Valuation
Report** to see how
much your home is
worth.

Hometrack is the UK's largest automated valuer of residential properties and is relied upon by 13 of the 15 top UK high street lenders.

Chris Naylor & Simon Hancott
Branch Directors

This report normally costs
£19.95 and includes ALL
recent house sales near you!



Get Your **FREE** Online Valuation Report
Call 24/7: **01525 300 010** or visit:
EweMoveLBvalue.co.uk



EweMove respects any existing sole agency agreement already in place with another agent.

PARISH COUNCIL NEWS

Well, as you can probably tell from the front cover and the separate flyer insert in this edition of the SH & NLS News, that the emphasis is very much on traffic management and speeding through our parish and particularly the village and how we can curb and control it. Whilst we as a Parish Council do very much want to support you on this matter, we can't do this alone, and we need you our parishioner's input. We want to understand your priorities plus your actual assistance. Hence, the reason why we have produced the inserted flyer and questionnaire to comprehend what you would like to see happen. You will also see from the flyer that we are also desperate for more volunteers to join the Speedwatch group, another effective solution for catching speeding perpetrators and slowing vehicles, but with the current total of just 4 Speedwatch operators, and it requiring a minimum of 3 to run a session, we are very much restricted on the number of operations we can mount. You can fill out the questionnaire and 'drop off' at the collection point in our village shop or alternatively complete online at <https://www.surveymonkey.co.uk/r/H53RPN6>

Once we have collated all the results, and if it does indicate that the majority would like to see a public open evening session, this will be organised, so that we can hear from as many of you as possible, as it is imperative, we understand what the majority of you would like to see happen. We have also asked if you would like to see a separate Traffic Management Group set up, in order to take on board all these ideas and suggestions and put together a project plan, but this would require some of you volunteering to be part of this Group.

We do however have one piece of good news to report on, that no doubt many of you will have already observed, is the installation of the new solar powered, mobile speed activated signs (MVAS) at the 3 main entrances to the village on the Fenny, Leighton and Newton Roads. We accept that these signs are not the ultimate solution but are a positive step forward, and the data they collect as regard vehicle numbers and their speeds, could prove extremely useful when we approach Highways about further traffic calming measures, plus if by displaying that a vehicle is exceeding the 30 mph limit and slows some drivers, it is a start to tackling the issue.



PCSO Joshua Walton-Taylor (on the left) with a fellow police officer on a recent visit to SH

We also appreciate that another area of concern has been the recent spate of minor thefts and vandalism, and please it is very important that you report these via 101. Just moaning on social media, and whilst we understand this lets you get the frustration out of your system, does not tackle the issue, hence the importance of reporting via 101. Our new PCSO Joshua Walton-Taylor endorses this approach, and has indeed increased his presence in the parish when he learns of such incidents. Joshau has already attended one of the weekly



Woburn Heating

Worcester Bosch Specialist

(12 years manufacturers guarantee offered)

Gas (domestic & commercial)
installation, service & repairs

Oil boiler & tank installation, service & repairs

LPG residential & park homes
installation, service & repairs

Underfloor heating specialist

System power flushing

Office: 01234 910319

Email: info@woburnheating.co.uk

www.woburnheating.co.uk



BOSCH



coffee mornings to meet with parishioners and held an open evening session at the Community Centre, which he intends to repeat on a regular basis.

As is usual for the summer, there was no PC meeting in August, but what was rather unusual is that since the last meeting in July there has been no new planning applications of any form, so, whilst we would normally refer you to 'Planning Updates' section for details, we are not doing so on this occasion. As for the PC meeting held on the evening of Tuesday 12th September, it was as anticipated a well-attended affair with 13 members of the public present, essentially dominated by the matter of traffic management and speeding. Which effectively drove the decision to include the flyer/questionnaire within this edition. As for other items discussed, and aside from the normal 'run of the mill' matters, these were as below:

- Following the receipt of a quotation from the original manufacturers/suppliers, the council agreed to go ahead with the repairs and replacement of the damaged and broken playground/gym equipment to the land adjacent to the Community Centre. Although at £5.6K it is a relatively large outlay, it was felt that over the 7 years since this equipment was first installed and bearing in mind the original supply and installation costs were covered by S106 funding this equipment has served the community well, and other than annual inspections and minor repairs has cost us very little to operate and maintain.
- In regard to a Christmas tree to be planted in Newton Leys South, the PC agreed to order a 3-3.5m tree at a cost of £1,500 +VAT which includes the planting of same, plus a set of battery operated LED lights at a further cost of £183.58+VAT. Before planting the ground would need to be scanned for any buried cables or pipework.
- The Sports Club in their update, advised that they will be hosting a fireworks event on the evening of the 3rd November and would be seeking funding via the Community Funding Scheme.
- During the public participation session, a question was asked about the provision of toilet facilities at the play park. There is however a clause on the land stating that no buildings can be erected. But the Clerk will speak to Bucks Council to see if S106 money could be used in this way.

The next PC Meeting is in October on the Tuesday evening of the 3rd at the Community Centre, Bragenham Side, Stoke Hammond MK17 9DB, starting at 7.30pm. The November meeting will be at the same community centre venue starting again at 7.30pm on Tuesday the 7th.

Should you wish to contact your Parish Council, please do so via our clerk:

Kelly Harris Tel: 07793 131810 Email: clerk.stokehammondpc@gmail.com

www.stokehammondpc.com

YOUR PARISH COUNCILLORS EMAIL ADDRESSES.

Cllr Malcom Newing (Chair) - malcomnewing@stokehammondpc.com

Cllr Craig Champion - craigchampion@stokehammondpc.com

Cllr Fran Sharkey - fransharkey@stokehammondpc.com

Cllr Greg Noble - gregnoble@stokehammondpc.com

Cllr David Venn - davidvenn@stokehammondpc.com

Cllr Mubasshir Ajaz – mubasshirajaz@stokehammondpc.com

Cllr Steven Julier – stevenjulier@stokehammondpc.com



**STEWKLEY PLAYERS
PRESENT**



BY PAUL CARPENTER & IAN GOWER

**WEDS 29TH NOV-
SAT 2ND DEC 2023 AT 8PM**

**STEWKLEY VILLAGE HALL
LICENSED BAR OPENS 7PM**

TICKETS £7.50 ON SALE 6TH NOVEMBER

BOX OFFICE TEL: 07845 489167

**SUNDAY BOX OFFICE AT STEWKLEY VILLAGE HALL
12TH, 19TH, 26TH NOVEMBER- 10AM - 12PM**

GOOD MORNING CAMPERS !!

Parents please be aware of Housing accommodation scams especially on social media platforms.

In this example below, the scammer preyed on Jane's desperation caused by needing to find accommodation for her son to rush her into making a decision. Jane's son was a student at St. Andrews University and had been looking online for accommodation for his next year amongst many other students due to a housing shortage in St. Andrews. Jane's son believed he had found the perfect flat advertised on Facebook. They spoke to the 'landlord' of the flat on the phone who was described as very charming and explained that they had received 54 applications but they had chosen Jane's son. To secure the flat, they needed to pay a deposit by the end of the day.

In the panic of trying to secure the flat, Jane had forgotten to check with her son that he had received a lease and signed it before sending over a deposit of £2250 via bank transfer to the 'landlord'. An hour later, the 'landlord' called Jane to explain that he had made a mistake and that he needed her to pay the first months rent in addition to the deposit. At this point, Jane began to feel that something might not be quite right but with the concern that they might not be able to find other accommodation for her son, she paid another lump sum to the 'landlord'.

Jane then began to do some research into the companies the 'landlord' had said he was affiliated with and discovered that they do not actually exist and that she had in fact been scammed. In total, Jane lost almost £4000 to the fraudster.

Opportunistic scammers relentlessly exploit individuals' personal circumstances whenever a chance arises, which means anyone can fall victim to a scam.

There are a number of basic ways you can protect yourself

Always look at reviews, verified reviews are a good indicator of a reputable seller. Do some research into the landlord/business before engaging with them. Do not be rushed into making a decision and handing over money. It is wiser to use credit or debit cards as they are protected payment schemes and add protection and recourse if something goes wrong. If you are a victim of a scam on Facebook make sure you report it to the platform as they have a responsibility to look into it.

Emails claiming to be from BT

There are a number of scam emails circulating which claim to be from 'BT' stating that 'following a recent update aimed at enhancing your security' they 'require all users to refresh their email accounts'.

The emails, some which carry BT branding, claim that users need to 'click on the Verify Account' button which is presented within the email text.

These emails are fake, anyone clicking on the link will be taken to a fake version of the BT website which will attempt to gather personal and password information which can then be used to take control of your email account.

The National Cyber Security Centre (NCSC) offer advice for staying secure online including activating 2-step verification (2SV) on your online accounts. To find out more visit the **National Cyber Security website** on <https://www.ncsc.gov.uk/collection/top-tips-for-staying-secure-online>.

If you receive this or any other suspicious email, send it to report@phishing.gov.uk, which was a new body set up by Suspicious Email Reporting Service (SERS) that started in 2020.

The service has stated that from 31st May 2023, they have received over 21 million emails forwarded to them as being suspicious. This has resulted in many websites being taken down and many scams removed.

So, if you receive a suspicious email send it direct to the email address above, and you will receive an automated email message back from them.

However, if you have been a victim of fraud then you should report to Action Fraud either by go to <http://www.actionfraud.police.uk> or ring: 0300 123 2040.

Scam from Amazon Prime.

Note the wording which gives it away as a scam. It is not from Amazon, but sometimes we can read things quickly and just update without thinking of the consequences. Please be careful.

Example below:

cs-noreply@amazon.com

to you

Case no 68848.

Prime

Hello Customer

Your Amazon account has been put on hold, therefore any pending order, Due to an issue with your billing method, we are unable to renew your Amazon Prime subscription will be temporary on hold. Please update your information as soon as possible so you can continue using your card with Amazon

If you don't complete account recovery within 24 hours we will lock your permanently account.

To continue using your Prime Membership benefits, please follow the three simple steps:

To log into your account. Add a new payment method or update an existing payment method. Resume Prime.

Update information box.

Direct Contact Number to your Banks

It is almost two years since the main banks introduced a single easy to remember phone number – **159** – for direct contact with your bank if you experience scams that could affect your bank account.

If you think someone is trying to trick you into handing over money or personal details: .Stop, hang up and call 159 to speak directly to your bank

159 is the memorable, secure number that connects you directly to your bank if you think you're being scammed.

159 will **never** call you.

Thames Valley Alert cont/d.

If you think your account has been compromised call 159. It is an easy number to remember and it saves you the time trying to find the number for your bank.

Home Repair Improvements.

When thinking about home improvements or looking to get repairs done on or around your home make sure you think **#CHECK**:

Compare – Speak with multiple tradespeople to compare. Get at least three quotes. Check with friends and family for recommendations.

Take your time, legitimate traders will not rush you to make a decision.

History – Ask for the traders' references, recommendations and reviews and make sure you check them out.

Establish the details – What work will be carried out? When will it start? Who will be doing the work? How much will it cost? Remember that a quote is more binding than an estimate.

Contract – Ensure everything is recorded and ask for a contract for the work.

Keep all the paperwork - This may be needed should anything go wrong.

To check out a Trusted Trader visit <https://www.trustatrader.com/builders-in-buckinghamshire>.

Talk to Extra Help for the complete solution

We can help with:

- Cleaning and tidying
- Ironing
- Companionship
- Escort (to appointments or activities - clubs, shows, etc.)
- Dog walking
- Shopping errands
- Meal preparation

....and so much more!
From £16.50 per hour



Could you do with a helping hand?



EXTRA HELP[®]
a helping hand

Call Alexandra on

Tel: 01908 596590

www.extra-help.co.uk

LUXURY NARROWBOAT HIRE

ON THE GRAND UNION CANAL



SEE LEIGHTON BUZZARD FROM A DIFFERENT PERSPECTIVE



THE EPIC BOATING COMPANY

NARROWBOAT 'KINGS LANDING'

Based in Stoke Hammond near Milton Keynes this brand new 60ft boat sleeps up to 7 people and is available to hire for holidays, weekends, mini-breaks and static staycations.

Full tuition is given on how to steer, navigate and operate locks before each hire.

Contact us for availability and prices.

CONTACTS US



Phone: 07974 141874

Email: admin@theepicboatingcompany.co.uk

Website: www.theepicboatingcompany.co.uk

DETAILS



2 Double Beds



Bunk Beds



Living Area



Kitchen



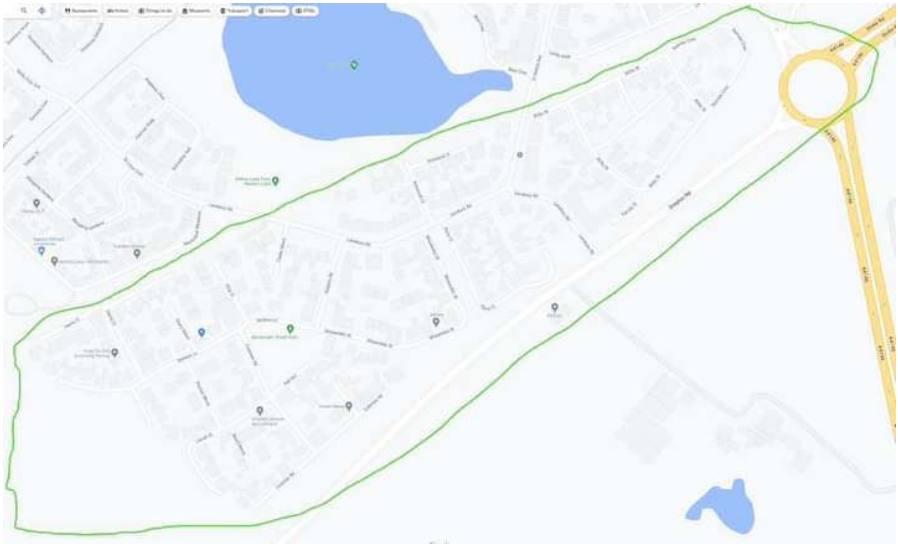
1 Shower Room



2 x WC's



WELCOME TO THE NEWTON LEYS SOUTH SECTION



Christmas tree and lights

We will be planting a Christmas tree on the land next to the park on Lansbury Road this autumn. Stoke Hammond Parish Council agreed to fund the cost and will also supply lights. This should provide a great focal point for the community in Newton Leys as the tree grows. It will need watering regularly for the first few years.

Newton Leys Management Company

Residents in houses built by Bovis on Newton Leys will be invited to an EGM in the next few weeks to vote to appoint two residents as Directors. Once those residents are appointed as directors the Management Company will be able to start negotiations with Stoke Hammond Parish council to agree to have the Dickens Lane park and public open space around the Bovis part of the estate that it is currently responsible for to be transferred to the council and adopted. The residents would then be able to wind down the management company. Please keep an eye out for the invite for the EGM and make sure you vote.

STOKE HAMMOND COMMUNITY ASSOCIATION

Why not hire the **Community Centre** or the **Meeting Room** for your party or business meeting. Discounted rates for residents of Stoke Hammond. To book or discuss your requirements please call 07555 711929 or email: shcommunitycentre@gmail.com



DETAILS AVAILABLE ON OUR WEBSITE

www.stokehammondcommunitycentre.com



PICTURE FRAMING by COUNTRY FRAME



EST 1984

The Complete Picture Framing Service

Expert advice and framing on:
Prints, Posters Water-Colours, Oil Paintings, 3D objects and all types of needlework

A huge range of mouldings to suit everything
and over 100 different colours of quality mounting boards

Contact: **Paul Body**

10 Fishweir, off Chapel Square, Stewkley, Leighton Buzzard, LU7 0HB

www.countryframe.co.uk

T: 01525 • 240163 M: 07771 • 508805



Christopher Burrows

www.windnbrassrepairs.com

Musical Instrument Repairer
Servicing-Repairs-Accessories

07940-906489/01525-279525
chris@windnbrassrepairs.com

Professional
Member
of NAMIR Ltd



MAVIS'S QUIZ

In case you missed them, here are the answers to the last quiz where you had to identify the tallest buildings or structures from the pictures that were shown.

1: Shanghai Tower 632M 2: One World Trade Centre 541M 3: Petronas Tower 452M 4: Empire State Building 443M 5: Eiffel Tower 330M 6: The Shard 307M 7: 22 Bishopgate 278M 8: The Golden Gate Bridge 227M 9: Blackpool Tower 158M 10: Dartford Crossing 137M



This time, do you recognize these famous quotes from both real life and the movies, and can you name the person or actor who said them? To assist we've given you the first initials of their name.

1 - *'The only thing we have to fear is fear itself'*

F _____ D R _____

2 - *'You're only supposed to blow the bloody doors off'*

M _____ C _____

3 - *'Be yourself; everybody else is already taken'*

O _____ W _____

4 - *'Leave nothing for tomorrow which can be done today'*

A _____ L _____

5 - *'I really think a champion is defined not by their wins but by how they can recover when they fail'*

S _____ W _____

6 - *'A man may die, nations may rise and fall, but an idea lives on'*

J ___ F K _____

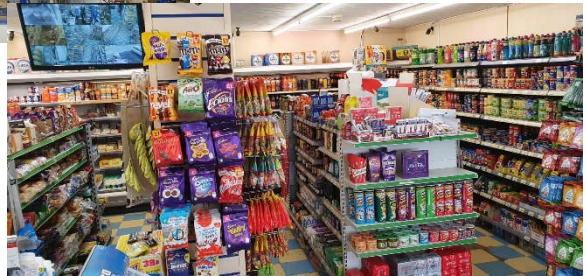
STOKE HAMMOND LOCAL STORE & POST OFFICE



Opening Hours:

Mon-Sat: 6.30am till 9.00pm

Sun: 8.00am till 9.00pm



Our Products:

"A FRIENDLY WELCOME GUARANTEED"

News & Magazines	Beers, Wines & Spirits	Pet Food
Confectionery & Snacks	Soft Drinks	Health & Beauty Products
Bread (inc. Turney's) & Cakes	Tobacco & Cigarettes	Frozen Food & Ice Creams
Dairy Products	Groceries	Greeting Cards
Medicines	Baby Food & other Products	Household Sundries
Sandwiches & Ready Meals	Fruit & Vegetables	Stationary Items

Other Services:

- * Pay-point/Top up services will be available. * Cash machine will be available.
- * Photocopying * Pies & Coffee will be introduced in the morning.



7 - 'You've got to ask yourself one question "Do I feel lucky?" Well, do ya, punk?'

C _ _ _ _ E _ _ _ _ _

8 - 'I would rather die of passion than of boredom'

V _ _ _ _ V _ _ G _ _ _ _

9 - 'Have no fear of perfection; you'll never reach it'

M _ _ _ _ C _ _ _ _

10 - 'It's not the men in your life that counts, it's the life in your men'

M _ _ W _ _ _ _

Best of luck, but to save you having to wait till the next edition, answers can be found on the 'Planning Section' Page



Build with peace of mind from plans to dreams.

We are a professional and reliable building company with over 30 years of experience. We have a good reputation and much of our work comes from recommendations. We work closely with customers to ensure their expectations are met and all work is carried out to the highest standard. We undertake a range of high quality building work.



- EXTENSIONS | NEW BUILDS
- HOME IMPROVEMENTS
- LOFT + GARAGE CONVERSIONS
- PORCHES | GAZEBOS
- KITCHEN + BATHROOM INSTALLATIONS

Please contact us for a free no obligation quote.

PAUL 07739 544 772
OFFICE 01525 270 946

p.moore@pmconstructionukltd.com

WWW.PMCONSTRUCTIONUKLTD.COM



**Charlotte Lyons
Physiotherapy**

**Leighton Buzzard
Physiotherapy Clinic
Open Monday to Saturday
Expert Clinical Care**

**Providing Treatment for Muscle, Joint and
Nerve Injuries, Dizziness, Sports Rehabilitation
and Pre & Post-Op Rehabilitation**

**Book an appointment at:
Craven House
Water Lane, Leighton Buzzard
LU7 1FA**

www.charlottelyonsphysiotherapy.com

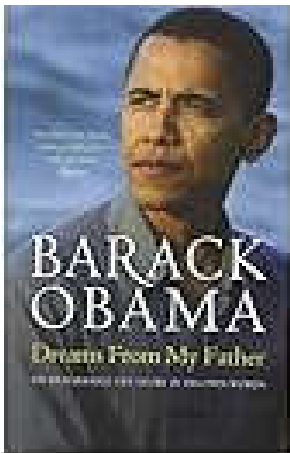
charlottelyonsphysio@gmail.com

07446 765945

STOKE HAMMOND BOOK CLUB



Dreams from my Father - by Barack Obama.



This is a story of race and inheritance - Barack Obama's search for his biracial identity and his determination to succeed shaped by his early life.

The Group seemed mostly to have enjoyed this book and some actually described it as a brilliant read. Everyone was an admirer of Barack Obama although upset by the problems that beset him race-wise. They were aware that he had a white mother and his father was from Kenya and didn't really expect him to be the subject of racial discrimination in quite the way he was. His impressive legal career was not realised by all of us and was to be admired.

There were comments about it being repetitive in places and his complicated family tree was a bit daunting but details of his background were interesting as was the emphasis on the importance of education. One or two of the group were disappointed in as much as they had mistakenly expected the book to lead up to his wonderful achievement of becoming the first black President of the USA but it was in fact a concentration on the earlier years before his marriage. However, all the Group thought it was a powerful and enlightening memoir and felt it likely that they would read other books by him.

Conclusion: definitely worth reading

You can find Book Two review over the next page

Joyful Tots



Joyful Tots is an inclusive drop-in for parents, carers, or anyone looking after a baby or preschool child. Friendly mums and carers are there to have a natter and babies & toddlers can learn to socialise.

You're also welcome to come if you don't have a baby just yet but are pregnant and want some tips! Refreshments are available.

Our opening times are 9am - 11.30am on Friday mornings during (Bucks CC) term times in the side room at Stoke Hammond Community Centre

We've had a few newcomers join us recently and a couple of them have new babies so we have quite a range of ages and it's handy for new mums to get some advice from those who've "been there, done that!" Don't feel shy, we're very friendly!

If your child is a little older, we are planning to develop more structured activities for them this term.



If you'd like more information please call Bethan 07803 805103, Diane 01525 270409 or Linda 07971 134497 or message us on Facebook

(Joyful Tots)

The Age of Innocence - by Edith Wharton



This is a novel written in 1920 although set in 1870 and follows Newland Archer, a young aristocratic lawyer who becomes engaged to the beautiful and innocent May Welland - thought to be a perfect match. However, with the arrival of her cousin Ellen the situation is disrupted as Ellen's worldly independent nature causes Newland to fall in love with her as she represents to him the freedom from the suffocating environment of the New York aristocracy. The book paints a disturbingly accurate picture of men and women caught in a snobbish society that denies any deviation from the rules of 'proper behaviour' in their aristocratic and high society cliques. It is an accurate portrayal of how the 19th century East Coast American upper class lived.

Although many of the group enjoyed the novel there were also many differing points raised. It was even described as 'magical' by a real admirer as it eloquently described the lives and values of the aristocracy of New York at the time. It was also felt by most of us that for much of it we were waiting for something to happen. The main character was tied to May, his fiancée who then became his wife whilst being in love with her cousin Ellen. Many of us mentioned that we were reading page after page waiting for someone to make a move in one direction or another to solve the situation. However, it was agreed that the last third of the book livened up with more action as after a couple of false starts and perhaps for reasons of loyalty and commitment, Newland didn't quite sort things out. We wondered whether he was not quite sure that Ellen would want him in the end, was he afraid of the scandal, did he not want May to suffer?

The Group's 'token man' knew a lot about the Author telling us that she was a rebel and he felt that she was really writing about her own life and experiences, and her own desire to break from the rigidity and limits imposed on women at a time when there was such a dependency on men. Many of us concluded that the story did not really have a happy ending as, many years later, when given the opportunity to meet up with Ellen again Newland preferred to keep his memories of Ellen where they had been in his younger days.

Conclusion: A famous and greatly admired novel so a good idea to try it - although I've given away the ending !!!

THE Lindens



The Lindens is a privately owned care home, set in the tranquil Buckinghamshire countryside, offering individual care for our long-term residents and those visiting us for respite care. We provide a real 'home from home' experience for all our residents and their visitors.

- ***24 Hour expert care delivered with compassion***
- ***Well-appointed double & single en-suite rooms with care call systems, televisions, DVD players and Internet facilities***
- ***Meals prepared in house using locally sourced ingredients, catering for individual dietary needs***
- ***Visitor's centre***
- ***Tea room available for our residents***

The Lindens Residential Care Home, Stoke Road,
Stoke Hammond, Buckinghamshire, MK17 9BN

Tel: 01908 371705 E-Mail: info@careatthelindens.co.uk

Web: www.careatthelindens.co.uk

THE Lindens

Summer Fete Fun!



This summer we hosted our first Summer Fete! We had various food trucks and stall holders, including an icecream van, facepainting, craft stalls, henna tattoos and tombola!

Mickey and Minnie Mouse made an appearance and we was visited by Shetland ponies, Oreo and Blue! We're grateful to have also been joined by deputy Mayoress Marie Bradburn and MP Greg Smith.



Memory Walk In aid of Alzheimer's Society



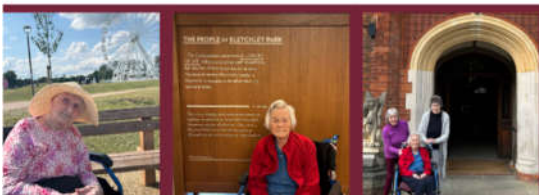
Staff and residents, Isobel and Pat walked the Memory Walk at Willen Lake. Walking in thought of our past and present residents



who have suffered with Alzheimer's disease.

We raised **£551!**

Connecting with the Community



Visits to local lakes, such as Willen Lake and a morning spent at Bletchley Park! A blast from the past for Jean, who worked there at the end of World War II.



The Lindens Residential Care Home

Stoke Rd, Stoke Hammond, Buckinghamshire MK179BN

OPENING TIMES

Monday 9:30-2:30

Tuesday 9:00-4:00

Wednesday 9:00-4:00

Thursday 9:00-8:00

Friday – Closed

Saturday 9:00-4:00



MADISONS

HAIR & BEAUTY

01908 632 050

- **Ladies**
- **Men's cuts**
- **Colours**
- **Children**

**17 GREENWAY, NEWTON LONGVILLE,
MILTON KEYNES, MK17 0AP**



LADIES THAT LUNCH

The August Ladies that Lunch was busy. Twenty-six people attended including guests from The Lindens Care Home. There were two remarkable gentlemen in their party, one was 101 years young and the other 89. It was an extremely busy time for the ladies that assisted and warm thanks to Margaret Corroll and Sylvia Drummond for helping.

The September lunch was not so well attended, most being on holiday or working. However, it was lovely to have help from Jo and Jen so that both Margaret and Sylvia were able to have a rest. Thank you.

The Ladies Lunch in October will be on TUESDAY 10th in the Sports Club serving at 12.30pm. The cost is still £2. In November it will be held on TUESDAY 14th, same venue and time.

Christmas: Any Ladies that would like to go out of the village for a Christmas Lunch please would you put aside £5 a month during October and November. There is £149.77p in the kitty so extra will be required if you wish to come. Drinks will need to be paid for by those coming. A venue will need to be booked soon may I suggest somewhere where we can use our bus passes!

Look forward to seeing you and let me know where the majority wish to go.

Hazel Turner 01525 270404 hmt404@hotmail.co.uk

GREAT BRICKHILL WI

If you enjoy watching MORRIS DANCERS and would like to participate, the local RAPSCALLIAN Morris Dancers will be entertaining members in the Parish Hall, Great Brickhill on WEDNESDAY OCTOBER 11th from 7.30pm. This is an OPEN MEETING, **so everyone is invited**. The group travels around the Milton Keynes area giving demonstrations. Refreshments will be served afterwards and there is a raffle. Tickets cost £5 and is payable on the door.

For more information, please contact Hazel on 01525 270404 or the Secretary Amanda Cox gbrickhillwi@gmail.com

Stoke Hammond Service Centre Bletchley

UNIT D, LYON ROAD, BLETCHLEY MK1 1EX

Tel: 01908 371110 & 01525 279009

Tyres ★ Exhausts ★ Servicing ★ MOTs ★ Diagnostics ★ Clutch ★ Engine

Established in 2006 and now one of the most accredited service centres around.



- ★ Free local collection and return.
- ★ Very competitive prices.
- ★ RAC inspected - 100%.
- ★ AA Select Garage.
- ★ MOT Testing Station.
- ★ Trading Standards, CAB, CVTS Approved.
- ★ All makes of car catered for.
- ★ Pleasant waiting area with hot drinks machine.





Ear Wax Removal

At Clearer Ears we specialise in earwax removal. Our Microsuction ear treatment provides a modern, quick and pain-free way to hear better again.

Our clinic is based in Linford Wood, Milton Keynes.

For those unable to attend clinic, we offer a home visit service.

We also provide bespoke custom made earplugs and earphones. These can be worn comfortably in a variety of different environments.

For more information or to book an appointment online visit:

www.clearerears.com

Or alternatively give us a call on:

0330 320 2225 or 07588 105060



www.facebook.com/clearerearsUK

Stoke Hammond Neighbourhood Plan

The final comment I made last month on the delay with the Neighbourhood Plan was that it would not have a major impact because we had met the targets set for the parish in the AV local plan and the Bucks local plan was a little way off. I should have touched wood!! For as I write this, we have just received notification from the Bucks Planning department that the former Aylesbury Vale area ('north and central') has recently lost its five year housing land supply position, which now stands at 4.5 years.

This means the 'tilted balance' of section 11 of the National Planning Policy Framework (NPPF) is now operating for determining housing proposals outside of those protected areas referred in footnote 7 to that paragraph, e.g. Green Belt, ANOBs *Areas of Outstanding Natural Beauty). The effect of section 11 is to lower the weight of adopted development plan policies – the Vale of Aylesbury Local Plan (VALP) and Neighbourhood Plans (NP) – to the extent that applications need only show that any adverse impacts of their proposals are outweighed by their benefits. This also means the protection we had from meeting our supply target in the AV local plan has disappeared.

As a consequence, in accordance with national policy, the council will have to apply the 'tilted balance' when determining some speculative applications and it may be necessary either to approve some of those applications, which may have otherwise been refused or, find some of those sites are approved on appeal for the same reason.

SUPPORTING OUR LOCAL AREA

To spread some cheer this year, Fine Homes Property has teamed up with the Brickhill Bistro to bring you some delicious treats.

If you are thinking of selling your home, book a free market appraisal with us and you will receive a golden ticket which entitles you to a selected afternoon tea or one of Kathryn's delicious cakes.

As well as this, when we sell your home we will donate 5% of our commission to a project in your village or a charity of your choice.



FINEHOMESPROPERTY

Your personal realtor

Marcus Feinhols

Marcus Feinhols MNAEA
Managing Director

 01525 261100

 marcus@finehomesproperty.co.uk

 www.finehomesproperty.co.uk

Stoke Hammond Neighbourhood Plan cont/d.

On the positive front our neighbourhood plan project is again underway with the Government having finally opened up the grant support for 2023/24. If all things go well, we hope to carry out the formal consultation throughout the Parish on our proposed Neighbourhood Plan including our proposals on Housing need for the Parish and the proposed outcome of our own 'call for sites' which parishioners were asked to prioritise at our March exhibition.

Can I take this opportunity to remind parishioners that the latest information on the Neighbourhood Plan is available via the Parish Council website including minutes of our meetings.

Malcolm Newing

Chair SH Neighbourhood Plan Steering Group

PLANNING APPLICATION NEWS & UPDATES AUGUST & SEPT 2023



In this section you will find details of planning applications received, comments made by your Parish Council, and any updates on previous planning applications.

NEW PLANNING APPLICATIONS:

In what is almost a first, no new planning applications were received in August or September for review by your Parish Council.

PLANNING UPDATES:

23/01525/ALB Stoke Lodge, Lodge Lane, Stoke Hammond MK17 9BU

Listed building application for removal of section of garden wall and the erection of a new garden wall and gates within the rear garden.

Your Cllrs had no objection to this application which now has Listed Building Consent.

For further information/updates on these or other planning applications in our locality, please visit the following website selecting 'Aylesbury Vale' as the search area and then enter the application reference or use the map search facility:

<https://www.buckinghamshire.gov.uk/planning-and-building-control/view-and-comment-on-a-planning-application/>

**ANSWERS TO MAVIS'S QUIZ 1 – Franklin D Roosevelt 2 – Michael Caine
3 – Oscar Wilde 4 – Abraham Lincoln 5 – Serena Williams 6 – John F Kennedy
7 – Clint Eastwood 8 - Vincent Van Gough 9 – Marie Curie 10 – Mae West**

Eaton Bray Dairy

QUALITY MILK DELIVERY SERVICE

Direct to your doorstep!

IN STOKE HAMMOND

Eaton Bray Dairy deliver fresh milk and goods direct to your doorstep 3 days a week, 52 weeks a year by 8:00am

Quality groceries supplied by Pecks Farm Shop, Eggington and delivered with your milk.

eatonbraydairy@gmail.com • www.eatonbraydairy.co.uk
07308 300793 • Steve Boshell



**JULIE
TEBBUTT
PAINTINGS**

**I AM AN ARTIST LIVING IN STOKE HAMMOND.
WOULD YOU LIKE TO LEARN TO PAINT IN
WATERCOLOUR, PASTEL OR ACRYLICS?
I AM CONSIDERING CLASSES TO BE HELD
IN THE SPORTS CENTRE, TIMES TO BE
ARRANGED AM/PM?
SHOULD YOU BE INTERESTED
CALL ME ON : 01525 279547
MOBILE : 07565 899104
E.MAIL : tebbutt.j@sky.com**

 **TEBBUTT PAINTINGS**



CARPET KLEAN

We're a professional carpet and upholstery cleaning service covering Milton Keynes and the surrounding areas.

We only use top of the range cleaning equipment so you can be sure the service will be fast and professional.

BOOK YOUR CLEAN TODAY
01908 970 960

or email: info@CarpetKlean.co.uk

Follow us on Facebook @CarpetKlean



Introducing your local
carpet, sofa, chair & rug
cleaning specialist...

Rodney Nowik



Life

Used to be simple and considerably less expensive. Back in “the day” a kid went to school, Dad went to work 9 to 5 and Mum looked after domestics. (that’s household stuff – not servants!). The lad or lass reached 11 and took an exam to see if they were clever enough to go to Grammar School or if not – a comprehensive. At 16 they’d take another exam to see if they were clever enough to go to University. If not, they’d get a copy of the evening News find themselves a job and start paying their mum rent.

The system sorted the wheat from the chaff and people knew their place in life. Not so now. The mantra “education, education, education” has taken hold and kids are encouraged to see University as the ultimate goal. This means they can put off doing any real work for another few years. Sadly, this is no longer funded by the Government (they couldn’t afford it as almost everyone seems to go to Uni now) and students now start life with a debt around the size of what used to be an average mortgage.

And it seems to me that degrees are handed out willy nilly. I know a number of friends and relations whose children have gone to university but I don’t know any who have failed to get a degree. There are quite a number of pass grades however although it may be that kids these days are all very clever.

So, we have 80% (say) of students now obtaining a degree and looking for a job. Strangely the job market hasn’t really changed much in the last 50 years. We still need the same number of dustmen through to brain surgeons that we had before. The ratio of skilled professionals to working tradesmen has not altered. I think we have created an “overqualified” workforce.

Grumpy Old Man



MD Autocare

Vehicle Maintenance

Stoke Hammond's local Independent Garage.

Keeping the cars of Stoke Hammond & surrounding areas on the road since 2001

Available for:

Servicing & Repairs

Mots

Diagnostics

Air Conditioning

All Makes & Models

Fitting is free for all Bulbs, Blades & Batteries purchased from us
(Standard fitment only)

You can find us up the single-track road, to the left of the Village Shop.

Mark & Jo

MD Autocare, The Workshop, Olde Bell Close
Stoke Hammond, MK17 9BZ

Tel: 01525 270278

Email: mdautocare@gmail.com

Facebook: www.facebook.com/MDAutocare

STOKE HAMMOND GARDENING CLUB



Unfortunately, not too much to report this time as we sadly had to cancel our proposed trip to Watermead House & Gardens near Birmingham in early September. It was arranged rather late; we didn't realise how many of our members were on holiday that week and the hugely increased cost of the coach meant that unless we had a full coach on this occasion it was not

going to be economically viable. Apologies to all those who had been looking forward to it. Lessons have been learnt !

However, we are now busy arranging our next event and all the Club's members will be receiving details very shortly - in fact you may already have received them !



The summer season is now coming to an end and we have had another busy time at the sports club. Our cricket teams did unfortunately suffer with more games than usual called off this year due to the poor weather we have had this summer. Our

midweek team had a great season and won the league. The Saturday team ended up finishing mid table. We would like to thank all who came and supported and of the cricket teams themselves. The Sunday team still have a couple of games left to play.

We will be once again be hosting our firework event on the 3rd November. Please keep an eye on our Facebook page for all the details on this event.

On Sunday mornings we now play host to the Stoke Hammond vets football team, but at the time of writing we don't yet have the fixtures list, but please pop in the club and ask. We will also put them on the Facebook page.

As the winter is approaching we will be cutting our outfield less and less. This is the time we find more dog fouling. Please can we remind people to pick up after their dogs. It is very important as we now have more sport on our field. It is a huge health hazard to anyone using the field for sport.

Hope to see you all soon for a nice chilled drink



Backcare

Pilates for Every Body!

Pilates Specialist to help you move better and feel better!
If you're feeling a bit broken and in need of some quality time just for YOU, let Matwork & Studio Pilates help put you back together!

STOKE HAMMOND - MONDAY

- ✔ 9.15am Intermediate
- ✔ 10.30am Gentle/Osteoporosis
- ✔ 12noon Beginners
- ✔ 7.15pm Mixed Level

**BODY CONTROL
PILATES.**



STUDIO -

TUESDAY/WEDNESDAY/THURSDAY

- ✔ 1:1 and 2:1 private sessions

ZOOM - WEDNESDAY DAY/EVE

SWANBOURNE - FRIDAY

louisa.pilates@gmail.com www.louisaharrispiates.co.uk 07941203589

**YOU COULD ADVERTISE YOUR
COMPANY OR SERVICES**

HERE FOR JUST £30 A YEAR

(6 BIMONTHLY EDITIONS)

IF YOU ARE INTERESTED THEN

PLEASE EMAIL:

enquiries@shcommunityassociation.co.uk

Sunshine Blinds

DOMESTIC AND COMMERCIAL

Rollers - Vertical- Pleated - Venetian - Roman - Shutters -
Day & Night - Perfect Fit

FREE NO OBLIGATIONS QUOTATION CONTACT US TODAY ON

01908 502366 or EMAIL info@blindsmiltonkeynes.com

www.blindsmiltonkeynes.com

Scouts

High Ash Group



The village cubs and scouts have just started a new term of activities and adventures following the summer holidays (so there isn't a huge amount to report since the July edition). Already the

cubs have got stuck into their home help badge and have been busy having a go at ironing, cooking, hovering, washing and even sewing (although most of the time was spent hunting for dropped needles).

The scouts have got stuck into designing their own board games in advance of an evening they have planned as part of their community impact badge at the local Linden's Residential Care Home.....we will see how they got on in the next edition.



We still have a few spaces for some more scouts (10 to 14 year olds) to join the troop on Thursday evenings at the community centre. We can also offer a couple of spaces to anyone looking to do their service section of the D of E scheme by coming along to help run team games and help out with our activities. We are

always keen to welcome new adult volunteers to the group you will find it a rewarding experience. We are still not able to reopen our beaver colony for the 6 to 8 year olds but have plenty of support ready to go if there are a few adult volunteers who would like to have a go at running this on Thursday nights (5.30 to 6.30). For more information, please make contact with Amanda McGee via join.highash@mkscouts.org.



DAVE POLLINGTON

Group Scout Leader (Baloo)

dave.pollington@mkscouts.org

High Ash Scout Group

MK District Scarf





WALK OUR WOOFERS

Walk Our Woofers is a local dog walking service, providing safe, fun and stimulating walkies for your furry best friend, either from your home or in local countryside. First-aid trained, insured and DBS-checked.



Call **07977 155164**

or email me at:

steve@walkourwoofers.co.uk

07977 155164

www.walkourwoofers.co.uk

LAPTOP & COMPUTER

Server, Printer, Apple, Setup, Repairs, Data recovery, Internet, Wireless, Network, Virus infection, Home/Office computer problems. Services from £40.

Your local IT support, 7 days services, we visit you

No Fix - No Fee

Qualified, Experienced

PClaprepairs@gmail.com

01525 306316 – 07925 338435

Local Carpenter

- With many years of experience
- Good quality work
- Including doors, kitchens, fitted wardrobes and shelving
- Large or small jobs

You can contact James by phone or email:

Phone : 07970 750599

email : boynjbc@hotmail.com



JBContractors

JB Thomas - Proprietor

NEED A HAIRCUT?



GIVE LES A CALL

07723 300576

I'm a mobile
Hairdresser working
in and around
Stoke Hammond



High Ash C of E School
Parish Council Newsletter



Grow Together Shine Forever

'Let your light shine' Matthew 5:16

October 2023

Autumn Term and a new School Year!

We are thrilled to be back in school and have had a fantastic start to the new school year. It has been a really positive and successful start back at school after the long summer break. The children have settled already.

October Open Morning

Please join us to experience the energy of our community and find out what makes us a dynamic and forward thinking school.

Our Open Morning takes place on **Wednesday 4th October 2023 from 9.30am** and offers an informal opportunity for prospective parents to view our School during the busy hustle and bustle of the school day.

Visitors will receive a guided tour from our Year 6 pupils with our Senior Leadership team on hand to answer any questions you have about life at High Ash CE Primary School.

If you are unable to attend our Open Morning, but would like to know more about our School, please contact our School Office on 01525 261620 or email to office@highashschool.co.uk to arrange a personal tour by .

We look forward to welcoming you to High Ash Primary School.

If you are unable to attend our Open Morning, but would like to know more about our School, please contact our School Office on 01525 261620 or email to office@highashschool.co.uk to arrange a personal tour by.

We look forward to welcoming you to High Ash Primary School.

McMillan Coffee Morning

We at High Ash are supporting the **Macmillan coffee** morning again this year. It will be in the afternoon on **Friday 29th September**. All parents are welcome to attend and their children within our school will be able to join them.

I am sure you agree it is a very worthy cause.

Harvest Festival

We are looking forward to our Year 3 and 4 pupils hosting Harvest Festival at St Mary's Church on **Wednesday 11th October** at 1.45pm.

BUTTONS Pre-School

- Abbeyes, Bletchley
- Brooklands Farm
- Giffard Park
- Great Linford
- Newton Leys
- Stacey Bushes
- Stewkley
- Stoke Hammond
- Stony Stratford
- Wavendon Gate
- Wolverton

15 and 30 hours funded sessions. Children from 18 months, private sessions also available.

Settings across Milton Keynes and Bucks, flexible hours including breakfast club, afterschool club and wrap around care. Forest School locations.

Contact us for details of your nearest pre-school.

Tel: 01908 533404 / 07973 158368

Email: enquiries@buttonspreschools.co.uk

www.buttonspreschools.co.uk



HIGH ASH SCHOOL October 2023 cont/d

Parent's Evening - parents will be invited to book appointments on the evenings of **Tuesday 10th and Thursday 12th October** so there may be additional traffic in and around the school on those evenings.

Year 5 Swimming

We have kicked off swimming lessons for our Year 5 children this term. These lessons are aimed to help build their confidence in the water. It is the hope that by the end of these sessions the children will be able to swim 25m.

Year 1/2 Hook Day

KS1 had a very exciting visit from Dino girl from the Natural Travelling History Museum. The children learnt all about different types of dinosaurs and what they ate to survive. We were very fortunate to have a photo-shoot with different dinosaur models - some of which were the same size as the children! The children also had the opportunity to be palaeontologists, uncovering a dinosaur skeleton in some sand and they got to role play at being stomping dinosaurs as well! At the end of the day, we learnt about how a meteor hitting the earth is believed to be why the dinosaurs became extinct - Dinogirl showed us what this might have looked like using flour and a large rock - it was very messy!

High Ash CE Primary School

COFFEE MORNINGS AT THE SPORTS CLUB



Every Wednesday morning from 10am.

All welcome, pop along for a mingle and a chat with friends and neighbours whilst enjoying a cup of tea or coffee and a biscuit on the side

The Sports Club, Bragenham Side, MK17 9DB

YOUR GREAT BRICKHILL UNITARY WARD COUNCILLORS

The Great Brickhill Ward includes the villages of: Drayton Parslow, Dunton, Great Brickhill, Hoggeston, Hogshaw, Mursley, Newton Longville, North Marston, Oving, Pitchcott, Quainton, Soulbury, Stewkley, Stoke Hammond & Swanbourne.



Phil Gomm

It's been a privilege living and being part of the spirited multicultural Aylesbury Vale community all my life. People have always been my focus and as a DJ Presenter and owner of an events company, listening and delivering accurately has been key. Family is extremely important and it's been my pleasure to farm and breed horses with them. Recently, as a County Councillor, Chairman of Thames Valley Crimestoppers and Buckingham Neighbourhood Action Group I've gained a passion for advocating for the best for people which I endeavour to continue.

Email: Philip.Gomm@buckinghamshire.gov.uk Mob: 07778 117647

Jilly Jordan

I am currently working as a Unitary Councillor in the Ivers. I have served on several committees, including planning (local and strategic) and finance, and I am Chairman of the local Community Board. We recently moved to live in the area. I am keen to use experience gained as a member of Buckinghamshire Council to the benefit of the local community. Clearly, we face many challenges, including those presented by major infrastructure projects. I look forward to getting to know members of the local communities and working together to maintain and improve the quality of life in our villages.

Email: Jordan@buckinghamshire.gov.uk Mob: 07740 308468



Iain Macpherson

Iain has spent the last 39 years in business, initially in international sales and marketing roles for multi-national companies travelling extensively, but more recently in medium sized businesses in the food sector in the Buckinghamshire and Oxfordshire area as Managing Director. He has always taken a keen interest in both national and local politics and has recently supported Greg Smith's campaign pre-election on the doorsteps. He's attended many fundraising events and local activities such as the anti-HS2 rallies. Iain is married to Angela, they have two mature children; Rosanna (31) and Angue (28)

Email: Iain.Macpherson@buckinghamshire.gov.uk Mob: Not Avail



St Luke's Church News

We all had a whale of a time at the **Barn Dance and Pig Roast** and it was a great reflection of the village community. We raised £160 and thank the Sports Club (who ran the bar) for their contribution.



We were treated to a delicious array of cakes and goodies at the **Afternoon tea** in August. Don't worry if you missed it, we've got one more this year – see below.

We were happy to give grateful thanks to

God for our harvest again this year at our well supported **Harvest Festival**. Our **Harvest Lunch** was also an enjoyable event with the usual delightful fare of salads and puddings washed down with a glass of wine.



Forthcoming Special Services:

We'll be holding our **St Luke's Day service** on **22nd October**. St Luke was a doctor, so we're holding healing prayer for anyone who wants it after the service. It's well known that many physical ailments have an emotional or mental source. Prayers can release negative emotions associated with illness, infirmity, or emotional stress. We can't guarantee a cure, but hope you'll feel better afterwards.



At our benefice **All Souls service** on **29th October**, we'll be remembering loved ones who have passed away, especially in the last year. If you'd like to attend and want a lift, or if you can't attend but would like a candle lit in a loved one's memory (it doesn't have to be a relative, just someone who meant a lot to you) please contact a church member.



We look forward to seeing you at our next **Café church** on **5th November**. Come along for our most easily accessible service. This is the same day as our **Deanery Confirmation service** which is in the afternoon (in Wing); preparation sessions begin soon. Please contact the Rector if you'd like to enrol.

On **12th November** we will be holding our **Remembrance service**. You don't have to be (or have been) a member of the armed forces to attend this service and show your respect for those who gave the greatest sacrifice for their country. This service starts promptly at the unusual time of **10.45am** so that we're all in place for the two-minute silence at 11am (following a brief introduction).



A full list of church services is found elsewhere in the newsletter.

Church Activities:

Prayers: Do you sometimes feel that it's too difficult to cope? Our prayer group meets twice a month and we're happy to accept prayer requests. We pray for individuals the village and the wider community, national and international issues, organisations including schools, and that God's will be done! All prayers are in strict confidence. Prayer request cards are available at the Community Breakfast or speak to a churchwarden. (See below)



Community Breakfast: The next breakfasts will take place on **14th October** and **11th November** with orders taken from **8.30 to 10.30am**. As well as full English (or constituent parts of) we also serve toast, fruit salad, cereal, croissants, pain au chocolat and boiled eggs! There is no charge for breakfast, but you're welcome to make a donation if you wish to.



Food Bank: The church foodbank is free to all and is available in the church porch and topped up roughly weekly. It's currently being used a lot (and we expect it to get worse in winter), so if you could contribute either financially or in kind, please speak to Dave or Diane Webber (see below) or bring your donation to the Community Breakfast.



Toy Swap Shop: The swap shop is still available in the church porch, so please feel free to use it, particularly at half term! If you have any toys, games or **children's** books that your children no longer play with, please feel free to donate them to the Swap Shop.



Fundraising Events:

Afternoon tea: We will be holding afternoon tea in the church from **3pm on Sunday 8th October**. This is a chance to come and meet up with friends and neighbours and have a chat. There will be cream scones and a selection of cakes. There's no charge for the tea but you may make a donation if you wish to.



St Luke's gift day: On **21st October** we will be opening the church for our Patron saint (St Luke)'s festival. We will be serving tea, coffee and cakes between **10am and 12 noon** followed by home-made soup and a roll from **noon to 2pm**.

There is no charge for the refreshments as we will be accepting your Gift Day donations towards the upkeep of the church. This year we have had trees pruned professionally in the church-yard but have had to go back to the drawing board to get new quotes for laying the church path.

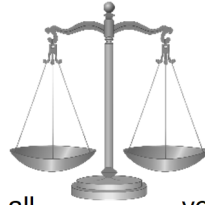


Christmas Fayre: I know it seems early, but Christmas is only 12 weeks away now and we're holding our Christmas Fayre on **Saturday 25th November** from **2-4pm** in the Community Centre. There will be a range of stalls and activities as well as refreshments, and a visit by Father Christmas!



Bible verse of the month: *Rom 10:13: ¹³ for, "Everyone who calls on the name of the Lord will be saved."*

What does it mean?: This verse is quoted three times in the Bible: in the book of Joel 2:32, in Acts 2:21 and in Paul's letter to the Romans. What it's saying is judgement day comes (and that will be a day the in terror of) whether you went to church, whether every day or even whether you were a good person all irrelevant: if you turn to God and beg his forgiveness and help, if you "call on the name of the Lord", he will save you. Not because you've earned it or deserve it, but because you believed in him and submitted to him, and he is a merciful God.



times in the this verse that when world will be you prayed your life, will be

Funeral information: The Rector can conduct a funeral service at a crematorium if you wish. New rules mean that crematoria are not offering a religious service by default: it must be specifically requested. Also, any village resident can have their ashes buried in the churchyard (for a small fee) if wished. Memorial stones must also conform to the Oxford Diocese regulations. Please note that rules regarding churchyard memorials have recently changed. If you'd like more details, please speak to the Rector or Churchwarden Harry Davies.



Church Benefice Website: www.brickhillchurches.org.uk.

St Luke's offers baptisms, weddings and funerals. Please contact the Rector if you'd like to discuss any of these (contact details are on the website). His phone goes straight to an answerphone but he'll reply as soon as he's able, or contact a Churchwarden. The Rector's day off is Monday. If you have a prayer request or enquiry, please call **Churchwardens: Harry on 07773065271 or Diane on 270409.**

MAP
(Not to scale)





News from Buckinghamshire Council

Dear Resident

31 August 2023

I hope you've enjoyed a good summer, whether you've been away or been at home here in Buckinghamshire. Importantly, thank you to everyone who's worked all summer keeping, shops, businesses, public services, charities etc. running while others have taken a break!

As we enter September there is an 'autumnal' feel in the air already. It is darker earlier and chillier in the mornings. Gardens are beginning to need that 'tidy up' too.



Money matters – tell us how you want your council tax spent

The first big task facing your local councillors this autumn is the planning of next year's budget. How much we will spend and on what. Your council tax is the main way that our critical local services are funded – from bin collections to road repairs to looking after adults and children who need our care.

I feel that I say this every year, but the pressures on local government finance keep becoming more and more intense. The main reason is the continually increasing cost of providing social care, with more and more people needing these services. Education and social care now accounts for about 70% of our gross expenditure. In addition we obviously need to keep providing the other important services residents rely upon such as libraries, trading standards, household waste sites, planning and education. In total we provide over 400 local services.

In recent years, with council tax increasing significantly less than inflation, we have rightly made big internal savings. Since Buckinghamshire Council was created, we have made savings of, or increased income by **£45 million** with a further **£43.9 million** of savings and income proposed by the end of 2025. In total, **this is £89 million of both savings and extra income combined** delivered in the first five years as a council. Nevertheless, our budgets are now so tight that we will still need to make difficult choices on where we spend your council tax – and what we need to prioritise. Some services may need to be reduced. This is where you come in. It's

essential that you – our residents – are a key part of that conversation and decision-making process.

Next year's (2024-25) budget will go live 1 April 2024, and we are at the part of the process where **we want to hear from you on our spending plans**; you can do this by taking part in our 'Money Matters' survey to tell us which council services you think we should prioritise in our spending plans for next year.

ULEZ expansion

I'm sure you'll also have seen in the news that the Mayor of London's Ultra Low Emission Zone (ULEZ) has expanded this week to reach the Buckinghamshire border, and that this will impact many of our residents and businesses who travel by road into London from Buckinghamshire if they don't have a vehicle that complies with the ULEZ standards.

The expansion is a decision that's been made by the Mayor of London. I need to be very clear that we are not against measures to improve air quality. However, this should not be done in a way that directly harms the many residents of adjacent councils who don't qualify for the support that the Mayor is giving London residents. We are concerned for small businesses, for care staff, for people visiting relatives across the border and patients needing hospital treatment. We have asked the Mayor of London to extend his scrappage scheme to qualifying Bucks residents and provide 'safe routes' to hospitals. As currently implemented, ULEZ penalises many people from Buckinghamshire who are already coping with significant cost of living pressures.

We've raised our concerns about the scheme as it stands repeatedly with the Mayor of London but unfortunately, at the point this has gone live, we are still in a position where none of our concerns have been addressed. Therefore, we have regretfully decided that we cannot help implement something that directly harms many Buckinghamshire residents. We are continuing to press Transport for London on these issues but given the expansion has now 'gone live', I do want to make sure you know what you need to about this.

Please make sure you consult all the information on the Transport for London (TfL) website about the scheme – if your vehicle isn't up to the standard you will face a daily charge of £12.50 to drive into the zone. It's essential you find out your vehicle's status and what this means for you – which you can do on the TfL website.

Heathrow survey

On the topic of air quality, I just wanted to let you know that Buckinghamshire residents are being asked to complete a survey on views about air quality around Heathrow Airport. This survey has been commissioned by an independent group set up to scrutinise activity at the airport, called the Council for the Independent Scrutiny of Heathrow Airport.

Healthier habits!

For many of us, the summer holidays have provided an opportunity to let go of routines, relax and indulge. As the summer draws to a close, I wanted to remind everyone of the support available in Buckinghamshire to encourage a healthier lifestyle and how we can all form longer-term habits around this.

You could consider using the BetterPoints app I've mentioned before, that the council is supporting. With this app the more activity you do, you can earn vouchers to spend on the high street or in other ways, a great incentive to get moving! So why not give it a go post-summer and [download the BetterPoints App today.](#)

We're also marking [Know Your Numbers! Week](#), at the start of September. This is a national initiative raising awareness of the risk factors associated with high blood pressure and we want to make sure our residents know all the places you can go to in Buckinghamshire to regularly check your blood pressure – these include community and faith settings. Just this simple action could make a huge difference to your health, so do give it a go. Health stations, blood pressure stations and portable blood pressure monitors are available to people in Buckinghamshire making it easier and more convenient for you to [make a start to a healthy heart.](#) And best of all, they're all free to use.

School results

Finally, I do wish everyone returning to school, both staff and students, the very best for the coming academic year. Congratulations to all those who've received exam results in recent weeks and don't forget the [support and information that's available to you](#) to make choices about the next steps after getting your results.

Yours,

Martin Tett Leader of Buckinghamshire Council



• GET IN TOUCH •

 **ONLINE**
Click here for our contact form

 **TELEPHONE**
Call us on 0300 131 6000*

* Phone lines are open Monday to Thursday 9am-5:30pm, Friday 9am-5pm. Phone lines are closed on bank holidays.

To keep up to date with the latest news from Buckinghamshire Council, please follow us on social media:



Buckinghamshire Council

The Gateway, Gatehouse Road, Aylesbury, HP19 8FF

buckinghamshire.gov.uk

VILLAGE DIARY

Tuesday 3 rd October	Parish Council Meeting – Community Centre – 19.30
Saturday 14 th October	Community Breakfast – Community Centre 08.30 – 10.30
Friday 3 rd November	Fireworks Event – Sports Club – times tbc
Tuesday 7 th November	Parish Council Meeting – Community Centre – 19.30
Saturday 11 th November	Community Breakfast – Community Centre 08.30 – 10.30
Saturday 25 th November	St Luke's Xmas Fayre - Community Centre – times tbc

For Church dates/times please see the 'Church Services' section

ORGANISATIONS THAT USE THE COMMUNITY CENTRE

High Ash Scouts, Cubs (Beavers)

Every Thursday 17.30 – 21.30hrs
Contact: Dave Pollington 01525 270864

Buttons Pre-School

Monday – Friday 09.00 – 15.00hrs
Contact: 07495 369320 or 01908 533404

Louisa Harris Pilates

Contact: 07941 203589
Monday day/evening
Louisa.pilates@gmail.com
www.louisaharrisilates.co.uk

Ace Rehabilitation Fitness Class

Every Wednesday 18.15 – 19.00
Contact: Amy Carr 07873 125710
acerehabilitation66@gmail.com

Joyful Tots

Every Friday 10.00 – 11.30hrs
Contact: Bethan 07803 805103

To Hire the Hall please telephone 01525 270151 or e-mail: enquiries@shcommunityassociation.co.uk

SH NEWS – ADVERTISING RATES

For 6 bimonthly editions: FULL Page - **£85.00** HALF Page - **£50.00** QTR Page - **£30.00**

To upgrade to full colour on rear cover, additional per edition cost:

FULL Page – plus £15.00 HALF Page - plus £10.00 QUARTER Page - plus £5.00

Note: Upgrading to full colour is on a per edition basis, not a commitment for 6 editions

Buckinghamshire Council	0300-131-6000
Aylesbury Vale Area – Buckinghamshire Council	01296-585858
Community Transport Co-ordinator	07729-699488
Registrar (<i>Births & Deaths</i>)	01296-383005
Registrar (<i>Marriages</i>)	01296-382481
Fly-Tipping on Roads	01296-382416
Social Care Services (<i>Emergency Duty</i>)	0800-999-7677
MK General Hospital	01908-660033
Stoke Mandeville Hospital	01296-315000
Luton & Dunstable Hospital	01582-491122
SH Gardening Club (<i>Eileen Curry</i>)	01525-270858
Clerk to the Parish Council (<i>Kelly Harris</i>)	07793-131810
Parish Council Chairman (<i>Malcolm Newing</i>)	07702 067966
Gt Brickhill Ward Councillor (<i>Phil Gomm</i>)	07778 117647
Gt Brickhill Ward Councillor (<i>Jilly Jordan</i>)	07740 308468
Gt Brickhill Ward Councillor (<i>Iain Macpherson</i>)	Not Available
MP - Buckinghamshire. (<i>Greg Smith</i>)	01296-714240
High Ash School	01525-261620
St Luke's Church (<i>Revd John Waller</i>)	01525-261062
St Luke's Church Warden (<i>Diane Webber</i>)	01525-270409
St Luke's Church Warden (<i>Harry Davies</i>)	01234-822780
Stewkley Methodist Church (<i>Mary Cottrell</i>)	01296 688741

Police non-emergency number 101

NHS Helpline non-emergency number 111

EDITORS NOTE

Phew! That was a bit of a late scorcher during the early part of September as I started to put together this edition of the SH & NLS News, with there being a week of 30 degree temperatures rounded off by thunderstorms. But now, we start to think of Xmas with this edition already running an advert for the annual Senior Citizens Christmas Lunch. No doubt, by the time this SH & NLS News lands through your letterbox, the shops will already have shelves bursting full of Christmas paraphernalia.

It was a shame there was no Village Show this year, something mentioned to me by many. Hopefully, it can be resurrected next year, if sufficient people come forward to help arrange and organise.

May I please have copy for the December 2023/January 2024 issue by the **22nd Nov**
 Greg Noble, The Birches, Church Road, Stoke Hammond. MK17 9BP
 01525 270744 E-mail: [gregnoble1980@aol.com](mailto:grenoble1980@aol.com)



WASTE COLLECTION DATES

STOKE HAMMOND VILLAGE & NEWTON LEYS SOUTH

Waste Bin: 	Recycling Bin:  <small>Paper, glass, cardboard, plastics, cartons, cans & tins</small>	Food Waste Bin:  <small>Non-recyclable or compostable.</small>	Garden Waste Bin: 
Wednesday 4 Oct		Wednesday 4 Oct	Wednesday 4 Oct
	Wednesday 11 Oct	Wednesday 11 Oct	
Wednesday 18 Oct		Wednesday 18 Oct	Wednesday 18 Oct
	Wednesday 25 Oct	Wednesday 25 Oct	
Wednesday 1 Nov		Wednesday 1 Nov	Wednesday 1 Nov
	Wednesday 8 Nov	Wednesday 8 Nov	
Wednesday 15 Nov		Wednesday 15 Nov	Wednesday 15 Nov
	Wednesday 22 Nov	Wednesday 22 Nov	
Wednesday 29 Nov		Wednesday 29 Nov	Wednesday 29 Nov
	Wednesday 6 Dec	Wednesday 6 Dec	
Wednesday 13 Dec		Wednesday 13 Dec	



RELIVE THE FASTEST DAY OF YOUR LIFE... SLOWLY
WEDDING VIDEOGRAPHY



Your precious

Wedding Story

PERFECTLY FILMED

'WE'VE GOT IT COVERED PACKAGE'

- A full day's filming (UK Mainland).
- A cinematic, 20-30 minute film of your special day shot in 4k resolution.
- A private link to be available on YouTube.
- USB drive master for you to keep.
- A 2-3 minute teaser film to share with family and friends.



TCL WEDDING VIDEOGRAPHY **07940 304919**

Book Your Event
Jonathan

FOR MORE INFORMATION VISIT
www.tathamconsultancy.com



wedding@tathamconsultancy.com



Senior Citizens Christmas Lunch



At the Community Centre, from 13.00 on Saturday 9th December

**To Reserve your place - Please call Ann
on 01525 270151 or Greg on 07729 69188**

Alternatively email

enquiries@shcommunityassociation.co.uk



Please advise of any special dietary needs or if transport required

Funded by the Community Association and your Parish Council