

THE 2021 POSITIVELY AWARE HIV DRUG CHART



Each drug is recommended for use in combination with other antiretrovirals (except any single-tablet regimen, including Atripla, Biktarvy, Complera, Delstrigo, Dovato, Genvoya, Juluca, Odefsey, Stribild, Symfi, Symfi Lo, Symtuza, and Triumeq). For a complete description of DHHS drug recommendations, go to aidsinfo.nih.gov/guidelines. Consult with a physician about which drug therapy and dose is appropriate for you; see drug page or package insert for complete information. Drug chart information is current as of February 5, 2021. Look up your drug by adding its name after typing positivelyaware.com/ into your browser (for example, positivelyaware.com/triumeq).

These medications contain a complete regimen all in one:

SINGLE-TABLET REGIMENS (Multiple drug classes; see pregnancy information for integrase inhibitors below.)



Atripla

RECOMMENDED INITIAL REGIMEN IN CERTAIN CLINICAL SITUATIONS
efavirenz/emtricitabine/tenofovir DF (EFV/FTC/TDF)

One tablet (600 mg efavirenz/200 mg emtricitabine/300 mg tenofovir DF), once daily. Take on an empty stomach, preferably at bedtime.



Complera

RECOMMENDED INITIAL REGIMEN IN CERTAIN CLINICAL SITUATIONS IF VIRAL LOAD <100,000 COPIES/mL
rilpivirine/emtricitabine/tenofovir DF (RPV/FTC/TDF)

One tablet (25 mg rilpivirine/200 mg emtricitabine/300 mg tenofovir DF), once daily. Take with a meal.



Dovato

RECOMMENDED INITIAL REGIMEN FOR MOST PEOPLE EXCEPT THOSE WITH VIRAL LOAD >500,000 COPIES/mL, HBV CO-INFECTION, OR BEFORE RESULTS OF GENOTYPIC RESISTANCE OR HBV TESTING
dolutegravir/lamivudine (DTG/3TC)

One tablet (50 mg dolutegravir/300mg lamivudine), once daily. Take with or without food.



Juluca

RECOMMENDED AS CONTINUATION THERAPY FOR PEOPLE WITH UNDETECTABLE HIV VIRAL LOAD FOR AT LEAST 6 MONTHS
dolutegravir/rilpivirine (DTG/RPV)

One tablet (50 mg dolutegravir/25 mg rilpivirine), once daily. For adults who are virologically suppressed on a current ART regimen for at least 6 months and who have no history of treatment failure or resistance mutations associated with rilpivirine or dolutegravir. Take with a meal.



Stribild

RECOMMENDED INITIAL REGIMEN IN CERTAIN CLINICAL SITUATIONS
elvitegravir/cobicistat/emtricitabine/tenofovir DF (EVG/COBI/FTC/TDF)

One tablet (150 mg elvitegravir/150 mg cobicistat/200 mg emtricitabine/300 mg tenofovir DF), once daily. Take with food.



Symfi Lo

RECOMMENDED INITIAL REGIMEN IN CERTAIN CLINICAL SITUATIONS
efavirenz/lamivudine/tenofovir DF (EFV/3TC/TDF)

One tablet (400 mg efavirenz/300 mg lamivudine/300 mg tenofovir DF), once daily. Should be taken on an empty stomach, preferably at bedtime.



Triumeq

RECOMMENDED INITIAL REGIMEN FOR MOST PEOPLE IF HLA-B*5701 NEGATIVE
dolutegravir/abacavir/lamivudine (DTG/ABC/3TC)

One tablet (50 mg dolutegravir/600 mg abacavir/300 mg lamivudine), once daily. One additional 50 mg tablet of Tivicay 12 hours apart in people with viral resistance to INSTIs or when taken with certain other medications. Take with or without food.



Biktarvy

RECOMMENDED INITIAL REGIMEN FOR MOST PEOPLE

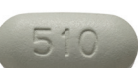
bictegravir/emtricitabine/tenofovir alafenamide (BIC/FTC/TAF)
One tablet (50 mg bictegravir/200 mg emtricitabine/25 mg tenofovir alafenamide), once daily. For people who are treatment-naïve, or on treatment and virologically suppressed for at least 3 months, with no history of treatment failure or resistance mutations associated with components of Biktarvy. Take with or without food.



Delstrigo

RECOMMENDED INITIAL REGIMEN IN CERTAIN CLINICAL SITUATIONS
doravirine/lamivudine/tenofovir DF (DOR/3TC/TDF)

One tablet (100 mg doravirine/300 mg lamivudine/300 mg tenofovir DF), once daily. Take with or without food.



Genvoya

RECOMMENDED INITIAL REGIMEN IN CERTAIN CLINICAL SITUATIONS
elvitegravir/cobicistat/emtricitabine/tenofovir alafenamide (EVG/COBI/FTC/TAF)

One tablet (150 mg elvitegravir/150 mg cobicistat/200 mg emtricitabine/10 mg tenofovir alafenamide), once daily. Take with food.



Odefsey

RECOMMENDED INITIAL REGIMEN IN CERTAIN CLINICAL SITUATIONS IF VIRAL LOAD <100,000 COPIES/mL
rilpivirine/emtricitabine/tenofovir alafenamide (RPV/FTC/TAF)

One tablet (25 mg rilpivirine/200 mg emtricitabine/25 mg tenofovir alafenamide), once daily. Take with a meal.



Symfi

RECOMMENDED INITIAL REGIMEN IN CERTAIN CLINICAL SITUATIONS
efavirenz/lamivudine/tenofovir DF (EFV/3TC/TDF)

One tablet (600 mg efavirenz/300 mg lamivudine/300 mg tenofovir DF), once daily. Should be taken on an empty stomach, preferably at bedtime.



Symtuza

RECOMMENDED INITIAL REGIMEN IN CERTAIN CLINICAL SITUATIONS
darunavir/cobicistat/emtricitabine/tenofovir alafenamide (DRV/COBI/FTC/TAF)

One tablet (800 mg darunavir/150 mg cobicistat/200 mg emtricitabine/10 mg tenofovir alafenamide), once daily. Take with food.

LONG-ACTING REGIMEN



Cabenuva

DHHS RECOMMENDATION NOT YET ESTABLISHED AT PRESS TIME
cabotegravir long-acting/rilpivirine long-acting (CAB LA/RPV LA)

One-month oral lead-in with food, then two intramuscular gluteal (butt) injections once every four weeks with or without food. Consists of one injection of long-acting cabotegravir and one injection of long-acting rilpivirine. For switching when suppressed, no history of treatment failure, and no resistance to components. See doses on drug page in the POSITIVELY AWARE HIV Drug Guide.

These medications must be taken in combination with other HIV meds:

INTEGRASE INHIBITORS (Pregnancy testing should be performed in those of childbearing potential prior to initiation.)



Isentress HD

RECOMMENDED AS A COMPONENT OF INITIAL REGIMEN FOR MOST PEOPLE
and Isentress
raltegravir (RAL)

Isentress HD: Two 600 mg film-coated tablets, once daily.
Isentress: One 400 mg film-coated tablet, twice daily.
Take with or without food.



Tivicay

RECOMMENDED AS A COMPONENT OF INITIAL REGIMEN FOR MOST PEOPLE
dolutegravir (DTG)

One 50 mg tablet, once daily for people on HIV therapy for the first time or treatment-experienced without previous INSTI resistance. Twice-daily dosing for people who have viral resistance to INSTIs or when taken with certain other medications. Take with or without food.

PROTEASE INHIBITORS (Boosted and unboosted)



Evotaz

RECOMMENDED AS A COMPONENT OF INITIAL REGIMEN IN CERTAIN CLINICAL SITUATIONS
atazanavir/cobicistat (ATV/COBI)

One tablet (300 mg atazanavir/150 mg cobicistat), once daily. Take with food.



Prezcobix

RECOMMENDED AS A COMPONENT OF INITIAL REGIMEN IN CERTAIN CLINICAL SITUATIONS
darunavir/cobicistat (DRV/COBI)

One tablet (800 mg darunavir/150 mg cobicistat), once daily. Take with food.



Prezista

RECOMMENDED AS A COMPONENT OF INITIAL REGIMEN IN CERTAIN CLINICAL SITUATIONS
darunavir (DRV)
One 800 mg tablet with 100 mg Norvir (ritonavir) or 150 mg Tybost, once daily for first-time therapy and treatment-experienced adults without Prezista-related resistance; or one 600 mg tablet plus 100 mg Norvir, twice daily for treatment-experienced people with Prezista-related resistance. Prezista must be taken with Norvir or Tybost. Take with food.



Reyataz

RECOMMENDED AS A COMPONENT OF INITIAL REGIMEN IN CERTAIN CLINICAL SITUATIONS
atazanavir sulfate (ATV)

One 300 mg capsule plus 100 mg Norvir (ritonavir) or 150 mg Tybost, once daily; or two 200 mg capsules (without boosting), once daily for treatment-naïve adults (see the POSITIVELY AWARE HIV Drug Guide for details). Take with food. **GENERIC IS AVAILABLE.**

PK ENHANCERS (Boosters)



Tybost

USED ONLY AS A BOOSTER FOR OTHER DRUGS; RECOMMENDED AS A COMPONENT OF INITIAL REGIMEN IN CERTAIN CLINICAL SITUATIONS
cobicistat (COBI)

Used only for boosting—not an antiretroviral. 150 mg once daily taken at the same time with either Prezista 800 mg or Reyataz 300 mg. Take with food.



Norvir

USED ONLY AS A BOOSTER FOR OTHER DRUGS; RECOMMENDED AS A COMPONENT OF INITIAL REGIMEN IN CERTAIN CLINICAL SITUATIONS
ritonavir (RTV)

Used for boosting, also an antiretroviral. 100–200 mg, dosed once or twice daily with another unboosted PI. Must be taken with food. **GENERIC IS AVAILABLE.**

NUCLEOSIDE REVERSE TRANSCRIPTASE INHIBITORS ("Nukes") ★ All "nukes" are recommended.



Cimduo

lamivudine/tenofovir DF (3TC/TDF)
★ RECOMMENDED AS A COMPONENT OF INITIAL REGIMEN FOR MOST PEOPLE WHEN COMBINED WITH TIVICAY, ISENTRESS HD, OR ISENTRESS
One tablet (300 mg lamivudine/300 mg tenofovir DF), once daily. Take with or without food.



Descovy

emtricitabine/tenofovir alafenamide (FTC/TAF)
★ RECOMMENDED AS A COMPONENT OF INITIAL REGIMEN FOR MOST PEOPLE
One tablet (200 mg emtricitabine/25 mg tenofovir alafenamide), once daily. Take with or without food.



Emtriva

emtricitabine (FTC)
★ RECOMMENDED AS A COMPONENT OF INITIAL REGIMEN FOR MOST PEOPLE
One 200 mg capsule, once daily. Take with or without food. **GENERIC IS AVAILABLE.**



Epivir

lamivudine (3TC)
★ RECOMMENDED AS A COMPONENT OF INITIAL REGIMEN FOR MOST PEOPLE
One 300 mg tablet, once daily; or one 150 mg tablet, twice daily. Take with or without food. **GENERIC IS AVAILABLE.**



Epzicom

abacavir/lamivudine (ABC/3TC)
RECOMMENDED AS A COMPONENT OF INITIAL REGIMEN FOR MOST PEOPLE IF HLA-B*5701-NEGATIVE WHEN USED IN COMBINATION WITH DOLUTEGRAVIR (AS TRIUMEQ)
★ RECOMMENDED AS A COMPONENT OF INITIAL REGIMEN FOR MOST PEOPLE
One tablet (600 mg abacavir/300 mg lamivudine), once daily. Take with or without food. **GENERIC IS AVAILABLE.**



Truvada

emtricitabine/tenofovir DF (FTC/TDF)
★ RECOMMENDED AS A COMPONENT OF INITIAL REGIMEN FOR MOST PEOPLE
One tablet (200 mg emtricitabine/300 mg tenofovir DF), once daily. Take with or without food. **GENERIC IS AVAILABLE.**



Viread

tenofovir disoproxil fumarate (TDF)
★ RECOMMENDED AS A COMPONENT OF INITIAL REGIMEN FOR MOST PEOPLE
One 300 mg tablet, once daily. Take with or without food. **GENERIC IS AVAILABLE.**



Ziagen

abacavir sulfate (ABC)
RECOMMENDED AS A COMPONENT OF INITIAL REGIMEN FOR MOST PEOPLE IF HLA-B*5701-NEGATIVE WHEN USED IN COMBINATION WITH DOLUTEGRAVIR AND LAMIVUDINE (AS TRIUMEQ)
★ RECOMMENDED AS A COMPONENT OF INITIAL REGIMEN FOR MOST PEOPLE
Two 300 mg tablets, once daily; or one 300 mg tablet, twice daily. Take with or without food. **GENERIC IS AVAILABLE.**



Temixys

lamivudine/tenofovir DF (3TC/TDF)
RECOMMENDED AS A COMPONENT OF INITIAL REGIMEN FOR MOST PEOPLE WHEN COMBINED WITH TIVICAY, ISENTRESS HD, OR ISENTRESS
★ RECOMMENDED AS A COMPONENT OF INITIAL REGIMEN FOR MOST PEOPLE
One tablet (300 mg lamivudine/300 mg tenofovir DF), once daily. Take with or without food.

NON-NUCLEOSIDE REVERSE TRANSCRIPTASE INHIBITORS ("Non-nukes")



Edurant

RECOMMENDED AS A COMPONENT OF INITIAL REGIMEN IN CERTAIN CLINICAL SITUATIONS (AS A COMPONENT OF DELSTRIGO, OR IN COMBINATION WITH DESCOVY, TRUVADA, CIMDUO, OR TEMIXYS)
rilpivirine (RPV)
One 25 mg tablet, once daily. Take with a meal.



Intelence

FOR TREATMENT-EXPERIENCED PEOPLE WITH VIRAL STRAINS RESISTANT TO AN NNRTI AND OTHER ANTIRETROVIRAL DRUGS ONLY
etravirine (ETR)
One 200 mg tablet, twice daily. Take following a meal.



Pifeltro

RECOMMENDED AS A COMPONENT OF INITIAL REGIMEN IN CERTAIN CLINICAL SITUATIONS (AS A COMPONENT OF DELSTRIGO, OR IN COMBINATION WITH DESCOVY, TRUVADA, CIMDUO, OR TEMIXYS)
doravirine (DOR)
One 100 mg tablet, once daily. Take with or without food.



Sustiva

RECOMMENDED AS A COMPONENT OF INITIAL REGIMEN IN CERTAIN CLINICAL SITUATIONS (AS A COMPONENT OF ATRIPLA, SYMFI, OR SYMFI LO, OR IN COMBINATION WITH DESCOVY, TRUVADA, CIMDUO, OR TEMIXYS)
efavirenz (EFV)
One 600 mg tablet, once daily. Take on an empty stomach, preferably at bedtime. **GENERIC IS AVAILABLE.**

ENTRY/ATTACHMENT INHIBITORS



Selzentry

maraviroc (MVC)
▼ FOR HEAVILY TREATMENT-EXPERIENCED PEOPLE
ENTRY INHIBITOR: CCR5 ANTAGONIST
150, 300, or 600 mg (available in 150 and 300 mg tablets), twice daily, depends on other medications used (see the POSITIVELY AWARE HIV Drug Guide for details). Take with or without food.



Trogarzo

ibalizumab-uiyk (IBA)
▼ FOR HEAVILY TREATMENT-EXPERIENCED PEOPLE
LONG-ACTING ENTRY INHIBITOR
CD4 POST-ATTACHMENT INHIBITOR
Administered once every two weeks via intravenous infusion. Treatment begins with an IV loading (starting) dose of 2,000 mg, followed by an 800 mg IV infusion maintenance dose given every two weeks thereafter.



Rukobia

fofostemsavir (FTR)
▼ FOR HEAVILY TREATMENT-EXPERIENCED PEOPLE
ATTACHMENT INHIBITOR
One 600 mg tablet twice daily. For heavily treatment-experienced people with multidrug-resistant virus on a failing HIV regimen due to resistance, intolerance, or safety considerations. Take with or without food.

LEGACY DRUGS The following drugs are no longer or rarely prescribed:



Agenerase
amprenavir (APV)



Aptivus
tipranavir (TPV)



Combivir
lamivudine/zidovudine (3TC/AZT)



Crixivan
indinavir (IDV)



Fuzeon
enfuvirtide (T-20, or ENF)



Invirase
saquinavir (SQV)



Kaletra
lopinavir/ritonavir (LPV/r)



Lexiva
fosamprenavir calcium (FPV)



Rescriptor
delavirdine (DLV)



Retrovir
zidovudine (AZT, or ZDV)



Trizivir
abacavir/lamivudine/zidovudine (ABC/3TC/AZT)



Videx EC
didanosine (ddI)



Viracept
nelfinavir (NFV)



Viramune XR
nevirapine (NVP)



Zerit
stavudine (d4T)



SPONSOR OF THE 2021 POSITIVELY AWARE HIV DRUG CHART
For a list of Walgreens pharmacies specializing in HIV/AIDS care and for other resources, go to HIV.walgreens.com. For the complete 2021 POSITIVELY AWARE HIV Drug Guide, go to positivelyaware.com. To order more copies of the 2021 POSITIVELY AWARE HIV Drug Chart or HIV Drug Guide, go to positivelyaware.com/subscribe. See full prescribing information, including boxed warnings, at daily.med.nlm.nih.gov.