

# MT Series Electric Actuators

TEL (03) 9290 9813  
INFO@FLUIDFLO.COM.AU  
WWW.FLUIDFLO.COM.AU



## Specifications

Power Supply:	24vac/24vdc, 240Vac, 415vac 50Hz
Running Time:	See Tables
Travel Angle :	90° ± 5°
Input (Modulating):	4~20mA, 1~5V, or 0(2)~10V select by DIP-switch
Feedback (Modulating):	4~20mA or 0(2)~10V select by DIP-switch
Enclosure:	IP67
Ambient Temperature:	-30° to +65°
Indicator:	Continuous Position Indicator
Manual Override:	Non-clutch design
Worm Gear:	Permanently lubricated and self -locking
Space Heater:	15W 220V Anti-condensation
Material:	Aluminum Alloy
External Coating:	Dry powder coating
Stall Protection:	Built-in thermal protection Cut off at 125 ± 5° Reset at 95 ± 5°

The MT series quarter-turn electric actuator. All MT models re equipped with standard On-Off or modulating (4~20mA, 1~5V, or 0(2) ~10V select by DIP-switch) control. All models of MT also provide feedback output signal via 2 x dry contacts for On-Off version; 0~5V, 0~10V, 4~20mA (selected by DIP- switch) for modulating version, Auxiliary Switch is optional.

## Features

- For On-Off or Modulating Control.
- Manual override non-clutch design.
- Irreversible worm gear.
- Visual mechanical position indicator for accurate visual reference of valve position.
- 2 aux. limit switches standard.
- Enclosure to IP67 to Nema 4X
- Full alloy construction to ISO12944-6 C3
- Full metal gear train lubricated for life
- Multi-voltage

## APPROVALS:



## Options

- 75% or 50% duty cycle.
- Modbus.
- Special coatings and colours.
- IP68 enclosure rated to 7m submergence for 72hrs\*\*
- Modulating controller 4-20Ma input and output.
- Spring return (MT-SY Series).
- Anti-condensation heater.
- Manual override for MT-A.
- Local/ remote control.
- Torque switches.
- Potentiometer.
- Position transmitter 4-20Ma output.
- Adjustable speed board & 3 second version
- EX approved version for hazardous areas.
- Grade 316 Stainless Steel available



**Technical Data**

Model	Torque (Nm)	Speed AC Sec/90°	Speed DC Sec/90°	Power (Watts)	Manual override	Mounting Flange (ISO5211)	Weight (Kg)
MT-1	35	13	15	10	Nut	F03/F05	2
MT-A	50	24	20	10	N/A	F05/F07	3
MT-AM	50	24	20	10	Nut	F05/F07	3
MTM-F	65	7	6	60	Handwheel	F07/F10	11
MT-2	90	17	15	40	Handwheel	F07/F10	11
MBM-2	120	9	8	40	N/A	F07	5.5
MTM-G	120	8	7	60	Handwheel	F07/F10	11
MT-3	150	26	22	40	Handwheel	F07/F10	11
MTM-H	300	24	21	60	Handwheel	F07/F10	17
MT-4	400	18	16	80	Handwheel	F10/F12	20
MT-5	500	25	22	80	Handwheel	F10/F12	20
MT-6	650	31	28	80	Handwheel	F10/F12	20
MT-7	1000	55	46	80	Handwheel	F12 or F14	32
MT-8	1500	55	46	90	Handwheel	F12 or F14	32
MT-9	2000	70	58	80	Handwheel	F14 or F16	71
MT-10	2500	70	58	80	Handwheel	F14 or F16	71
MT-11	3000	70	58	220	Handwheel	F14 or F16	72
MT-12	3500	70	58	220	Handwheel	F14 or F16	72
MT-13	4500	104	95	300	Handwheel	F16/F25	106

Contact Fluidflo for wiring diagrams, operation manuals and additional specifications

# MT SERIES ELECTRIC ACTUATORS

TEL (03) 9290 9813  
 INFO@FLUIDFLO.COM.AU  
 WWW.FLUIDFLO.COM.AU



MTE EXPLOSION PROOF

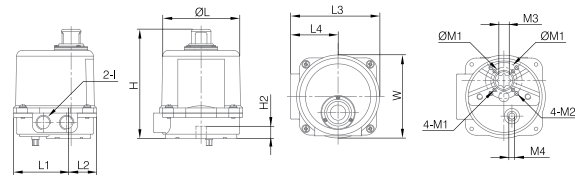
MTSE SPRING RETURN

LOCAL CONTROLS



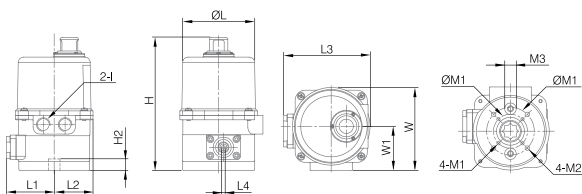
## Dimensions

Model	H	H2	ØL	L1	L2	I	L3
MT-1	150	17	106	79	35	1/2PS	122
Mounting	L4	W	ØM1	M1	M2	M3	M4
F03/F05	65	114	36/50	M5x0.8	M6x1.0	14(max)	8

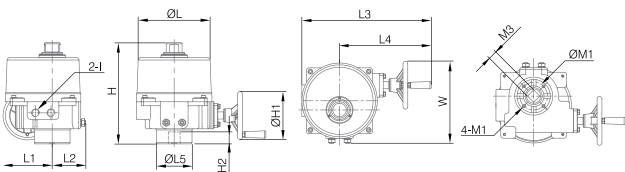


Model	H	H2	ØL	L1	L2	I	L3
MT-A	196	20	106	57	57	1/2PS	114
Mounting	L4	W	W1	ØM1	M1	M2	M3
F05/F07	—	122	65	50/70	M6x1.0	M8x1.25	17

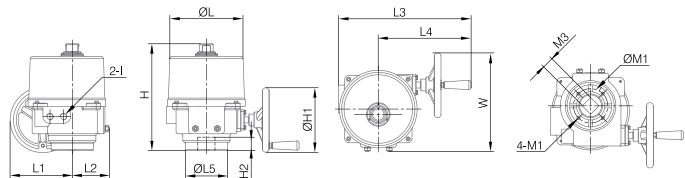
Model	H	H2	ØL	L1	L2	I	L3
MT-A-M	196	20	106	70	57	1/2PS	127
Mounting	L4	W	W1	ØM1	M1	M2	M3
F05/F07	5	122	65	50/70	M6x1.0	M8x1.25	17



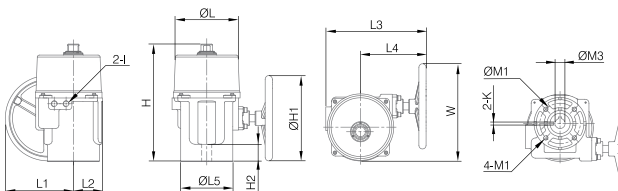
Model	H	ØH1	H2	ØL	L1	L2	I
MT-2 & MT-3	255	121	30	181	124	84	1/2PS
Mounting	L3	L4	ØL5	W	ØM1	M1	M3
F07	326	231	90	207	70	M8x1.25	22(max)



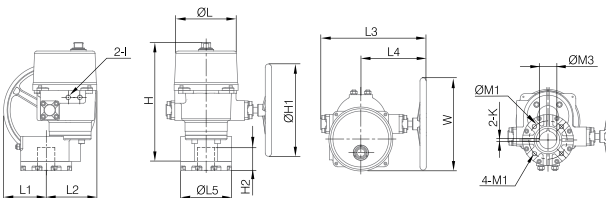
Model	H	ØH1	H2	ØL	L1	L2	I
MT-4 to MT-6	317	191	40	217	184	110	1/2PS
Mounting	L3	L4	ØL5	W	ØM1	M1	M3
F10	394	275	125	292.5	102	M10x1.5	35



Model	H	ØH1	H2	ØL	L1	L2	I	L3
MT-7 & MT-8	406	295	60	217	235	101	1/2PS	347
Mounting	L4	ØL5	W	ØM1	M1	ØM3	K	
F12/F14	227	180	336	125/140	M12x1.75/M16x2.0	35(max)	10	



Model	H	ØH1	H2	ØL	L1	L2	I	L3
MT-9 to MT12	554	398	100	261	184	218	1/2PS	455
Mounting	L4	ØL5	W	ØM1	M1	ØM3	K	
F16	282	220	402	165	M20x2.5	75	12	



Model	H	ØH1	H2	ØL	L1	L2	I	L3
MT-13	571	398	110	261	217	283	1/2PS	462
Mounting	L4	ØL5	W	ØM1	M1	M2	ØM3	K
F16	282	360	500	254	M20x2.5	M16x2.0	72	20x12

