

MT Series Pneumatic actuators

TEL (03) 9290 9813
INFO@FLUIDFLO.COM.AU
WWW.FLUIDFLO.COM.AU



Specifications

| | |
|----------------------|-------------------------------|
| Ambient Temperature: | -20° to +80° |
| Indicator: | Continuous Position Indicator |
| Manual Override: | Optional |
| Travel: | 90 or 180 deg |
| Body Material: | Anodized Aluminum |
| External Coating: | Dry powder coating |
| Operating pressure: | 2-8bar dry clean air |

The MT series pneumatic actuators are available in double acting or spring return. Robust and reliable they are available in a variety of materials and configurations.

Options

- All grade 316 stainless steel version.
- -60 to +150 deg versions.
- Special colours.
- Coatings in PTFE or Nickel Phosphorus.
- 3 position for 3-way valves
- Longer stroke body for up to 180 deg rotation.

Features

- Double 5-degree stroke control.
- Life cycle of more than 2 million actuations.
- Meet the ISO5211, DIN3337 and Namur standards.
- Visual mechanical position indicator for accurate visual of valve position.
- Anodized aluminum extruded body designed to ASTM6005.
- Polyester coated end caps and stainless-steel fasteners
- Interface for Namur solenoid valve and limit switch boxes.

APPROVALS:



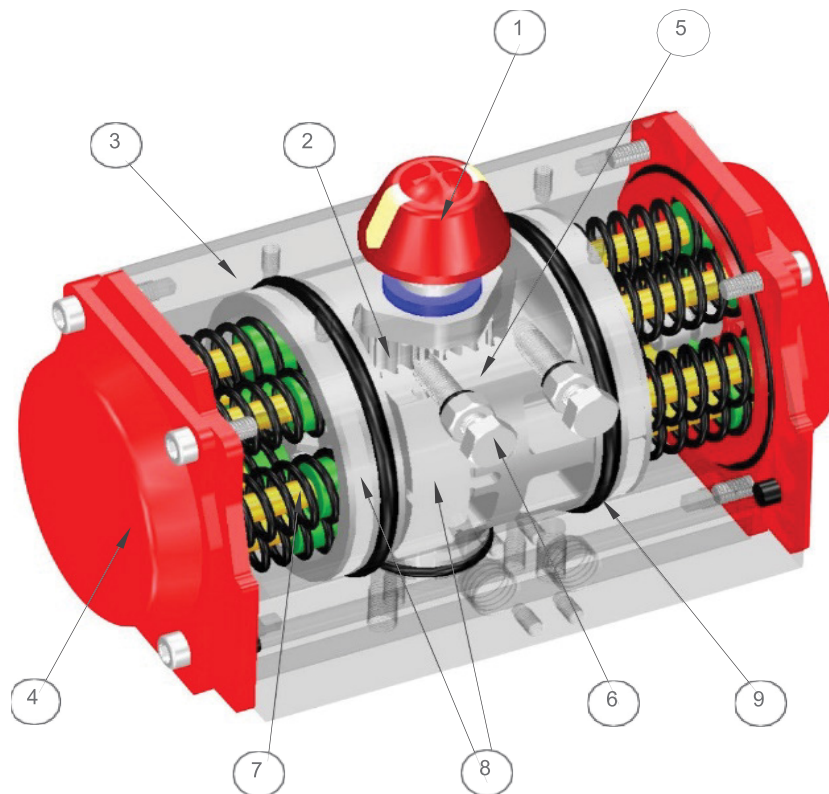
MT Series Pneumatic actuators

TEL (03) 9290 9813
INFO@FLUIDFLO.COM.AU
WWW.FLUIDFLO.COM.AU



Technical Data

1. Position indicator removable for fitment of Namur switch box.
2. Shaft according to ISO5211, DIN3337, NAMUR, and made of extruded low carbon alloy steel with nickel phosphorus coated for long-term operation even in harsh environments.
3. Body based on ISO5211 and made of hard anodized extruded aluminum to ASTM6005.
4. End caps standard in polyester, nickel phosphorus or PTFE coated are optional in any color.
5. Pistons are die-cast aluminum and anodized for fast and symmetrical operation.
6. Travel stop adjustment allowing adjustment of $\pm 5^\circ$ ensuring precise valve alignment.
7. Cartridge springs are preloaded from piano spring material to ensure long term trouble-free operation. Can be dismantled safely to the right spring quantity.
8. Bearings and guides are made from low friction, long-life compound material. (POM and Nylon and 30% glass fiber)



Input Shaft Options

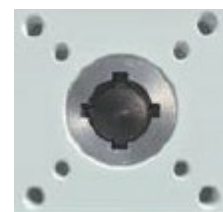
DOUBLE SQUARE



DOUBLE D



KEYED

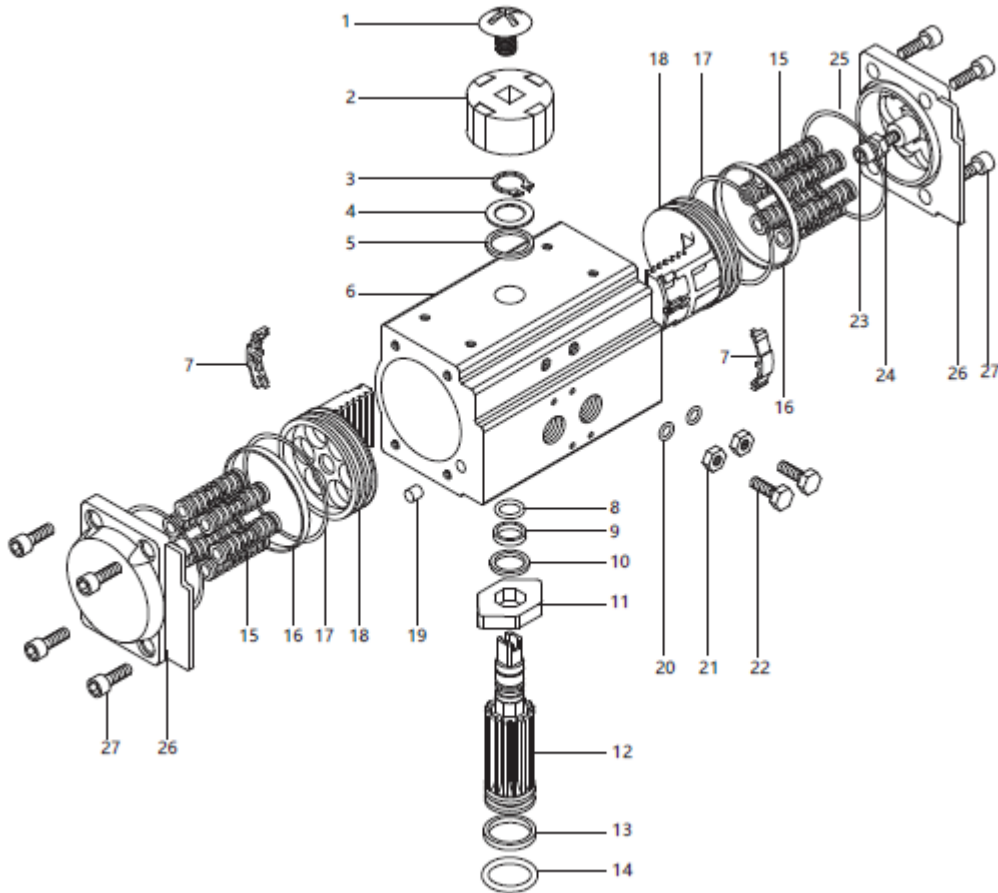


MT Series Pneumatic actuators

TEL (03) 9290 9813
 INFO@FLUIDFLO.COM.AU
 WWW.FLUIDFLO.COM.AU



Parts and Materials



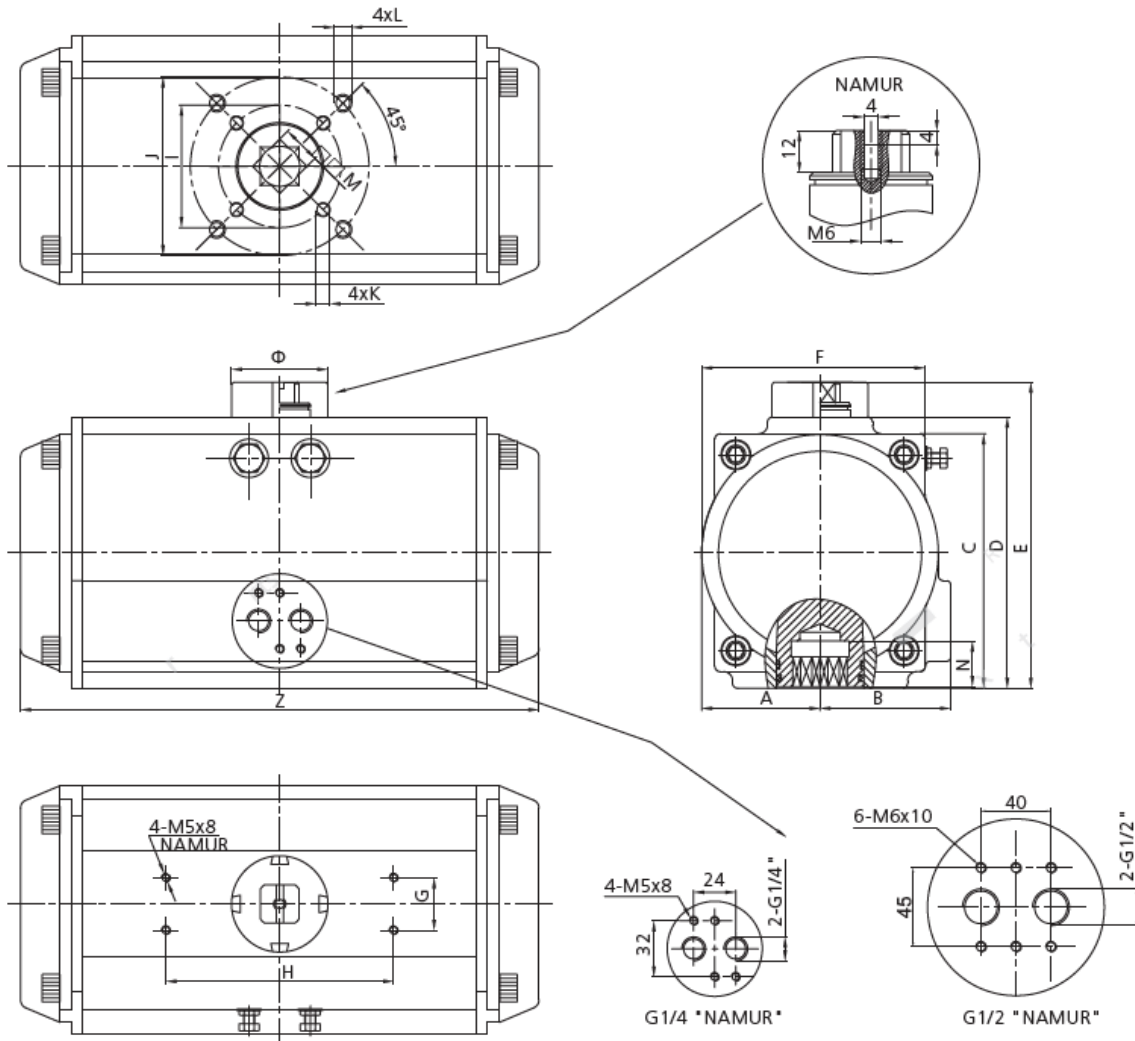
| No. | Description | Qty | Material | No. | Description | Qty. | Material |
|-----|-------------------------|-----|-------------------------------|-----|--------------------|------|---------------------------|
| 1 | Indicator screw | 1 | Plastic (ABS) | 15 | Spring | 0~12 | Spring steel |
| 2 | Indicator | 1 | Plastic (ABS) | 16 | Bearing (piston) | 2 | polyoxymethylene |
| 3 | Circlip | 1 | Stainless steel (304) | 17 | O-ring(piston) | 2 | NBR or Viton |
| 4 | Thrust washer | 1 | Stainless steel (304) | 18 | P is ton | 2 | Die-Cast aluminium (A380) |
| 5 | Outside washer | 1 | polyoxymethylene | 19 | P lug | 2 | NBR or Viton |
| 6 | Body | 1 | Extruded aluminium (6005-T 5) | 20 | O-ring | 2 | NBR or Viton |
| 7 | Guide(piston) | 2 | polyoxymethylene | 21 | Nut (adjust screw) | 2 | Stainless steel (304) |
| 8 | O-ring (pinion top) | 1 | NBR or Viton | 22 | Adjust screw | 2 | Stainless steel (304) |
| 9 | Bearing (pinion top) | 1 | polyoxymethylene | 23 | Stop screw | 2 | Stainless steel (304) |
| 10 | Inside washer | 1 | polyoxymethylene | 24 | Nut (stop screw) | 2 | Stainless steel (304) |
| 11 | Cam | 1 | (Alloy Steel) #45 | 25 | O-ring (end cap) | 2 | NBR or Viton |
| 12 | P inion | 1 | (Alloy Steel) #45 | 26 | Endcap | 2 | Die-Cast aluminium(A380) |
| 13 | Bearing (pinion bottom) | 1 | polyoxymethylene | 27 | End-cap screw | 8 | Stainless steel (304) |
| 14 | O-ring (pinion bottom) | 1 | NBR or Viton | | | | |

MT Series Pneumatic actuators

TEL (03) 9290 9813
 INFO@FLUIDFLO.COM.AU
 WWW.FLUIDFLO.COM.AU



Dimensions D52-270



UNIT: MM

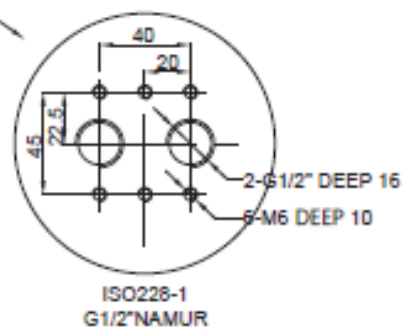
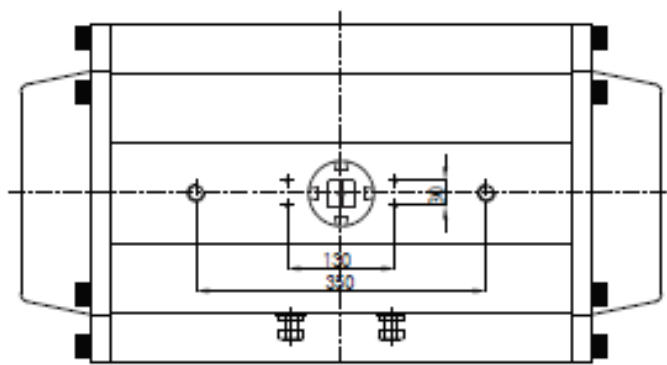
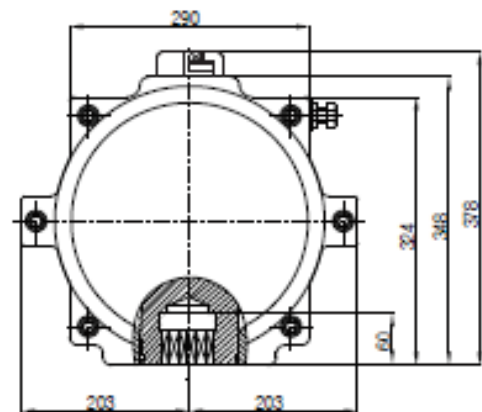
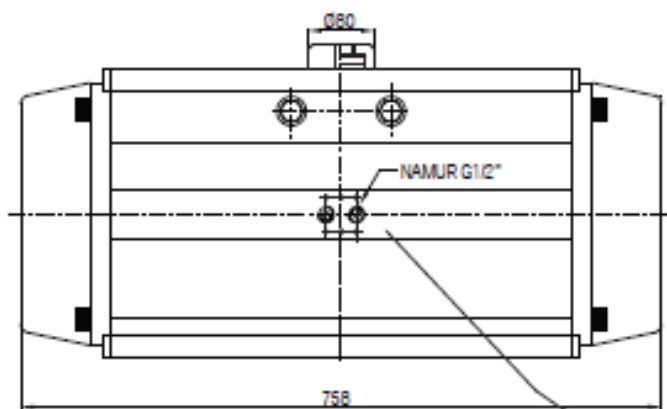
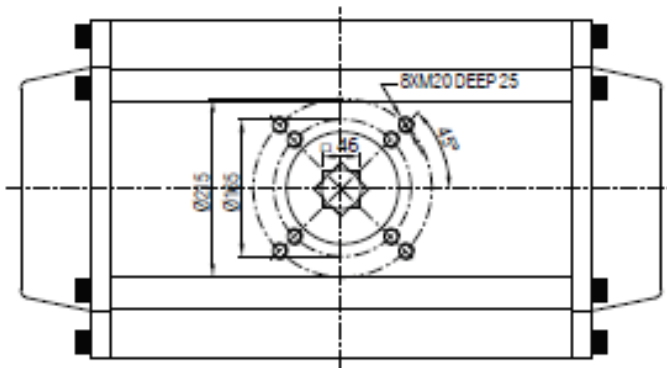
| Model | A | B | C | D | E | F | G | H | I | J | K | L | M | N | Z | Φ | Air Connection |
|-------|------|------|-------|-------|-------|-------|----|-----|-------|-------|--------|--------|----|----|-----|------|----------------|
| D-52 | 30 | 41.5 | 65.5 | 72 | 92 | 65 | 30 | 80 | Φ 36 | Φ 50 | M5x8 | M6x10 | 11 | 14 | 147 | Φ 40 | G1/4"(1/4"NPT) |
| D-63 | 36 | 47 | 81 | 87.5 | 107.5 | 72 | 30 | 80 | Φ 50 | Φ 70 | M6x10 | M8x13 | 14 | 18 | 168 | Φ 40 | G1/4"(1/4"NPT) |
| D-75 | 42 | 53 | 94 | 99.5 | 119.5 | 81 | 30 | 80 | Φ 50 | Φ 70 | M6x10 | M8x13 | 14 | 18 | 184 | Φ 40 | G1/4"(1/4"NPT) |
| D-83 | 46 | 57 | 98.5 | 108.7 | 128.7 | 92 | 30 | 80 | Φ 50 | Φ 70 | M6x10 | M8x13 | 17 | 21 | 204 | Φ 40 | G1/4"(1/4"NPT) |
| D-92 | 50 | 58.5 | 111 | 116.5 | 136.5 | 98 | 30 | 80 | Φ 50 | Φ 70 | M6x10 | M8x13 | 17 | 21 | 262 | Φ 40 | G1/4"(1/4"NPT) |
| D-105 | 57.5 | 64 | 122.5 | 133 | 153 | 109.5 | 30 | 80 | Φ 70 | Φ 102 | M8x13 | M10x16 | 22 | 26 | 268 | Φ 40 | G1/4"(1/4"NPT) |
| D-125 | 67.5 | 74.5 | 145.5 | 155 | 175 | 127.5 | 30 | 80 | Φ 70 | Φ 102 | M8x13 | M10x16 | 22 | 26 | 301 | Φ 55 | G1/4"(1/4"NPT) |
| D-140 | 75 | 77 | 161 | 172 | 192 | 137.5 | 30 | 80 | Φ 102 | Φ 125 | M10x16 | M12x20 | 27 | 31 | 394 | Φ 55 | G1/4"(1/4"NPT) |
| D-160 | 87 | 87 | 184 | 197 | 217 | 158 | 30 | 80 | Φ 102 | Φ 125 | M10x16 | M12x20 | 27 | 31 | 458 | Φ 55 | G1/4"(1/4"NPT) |
| D-190 | 103 | 103 | 216 | 230 | 260 | 189 | 30 | 130 | | Φ 140 | | M16x25 | 36 | 40 | 528 | Φ 80 | G1/4"(1/4"NPT) |
| D-210 | 113 | 113 | 235.5 | 255 | 285 | 210 | 30 | 130 | | Φ 140 | | M16x25 | 36 | 40 | 532 | Φ 80 | G1/4"(1/4"NPT) |
| D-240 | 130 | 130 | 264.5 | 289 | 319 | 245 | 30 | 130 | | Φ 165 | | M20x25 | 46 | 50 | 602 | Φ 80 | G1/4"(1/4"NPT) |
| D-270 | 147 | 147 | 299 | 326 | 356 | 273 | 30 | 130 | | Φ 165 | | M20x25 | 46 | 50 | 722 | Φ 80 | G1/2"(1/2"NPT) |

MT Series Pneumatic actuators

TEL (03) 9290 9813
 INFO@FLUIDFLO.COM.AU
 WWW.FLUIDFLO.COM.AU



Dimensions D300

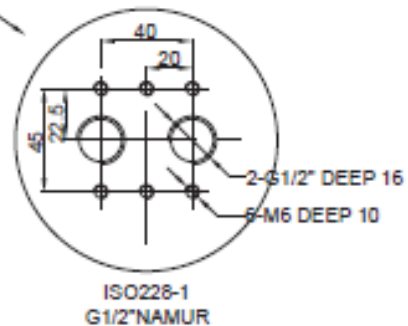
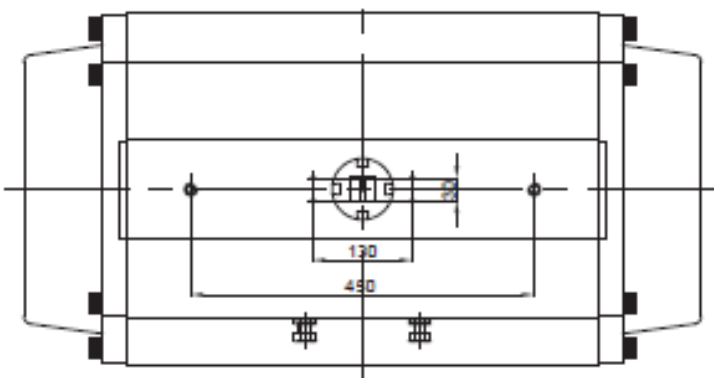
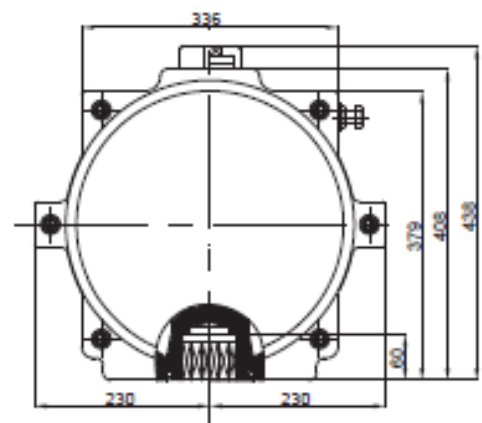
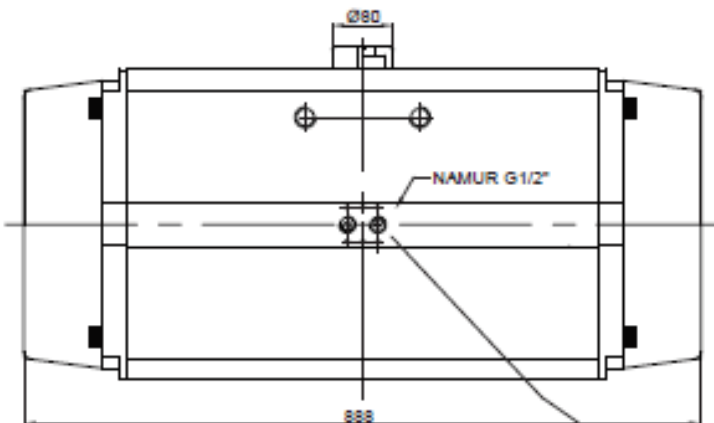
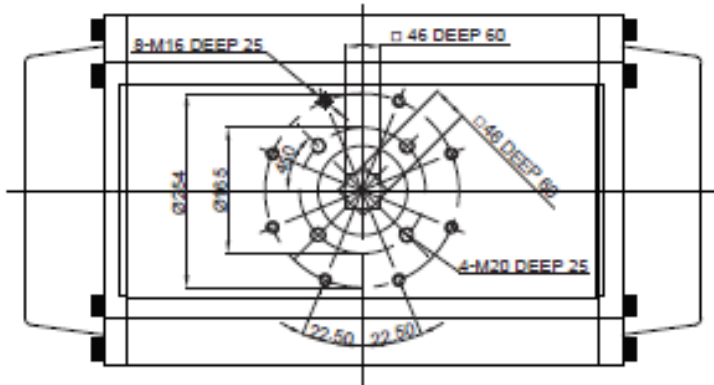


MT Series Pneumatic actuators

TEL (03) 9290 9813
 INFO@FLUIDFLO.COM.AU
 WWW.FLUIDFLO.COM.AU



Dimensions D350

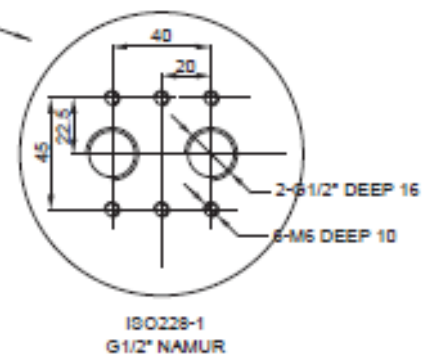
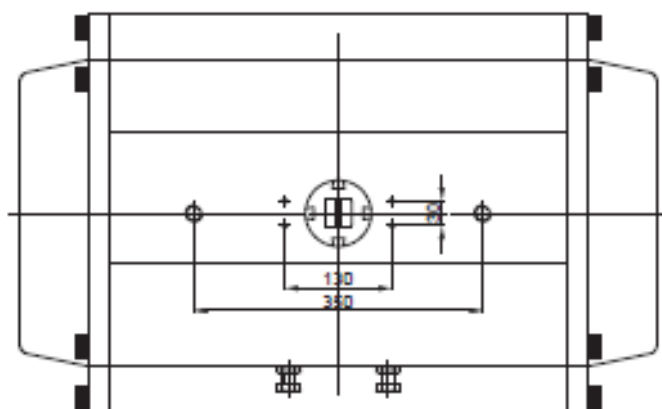
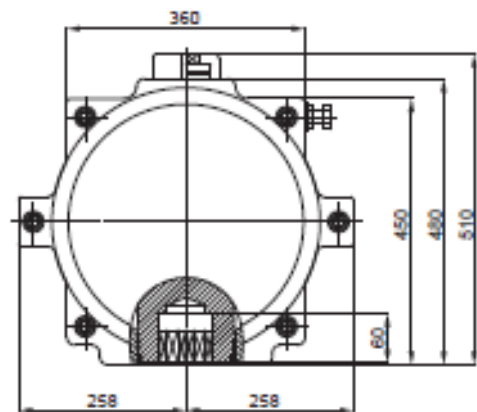
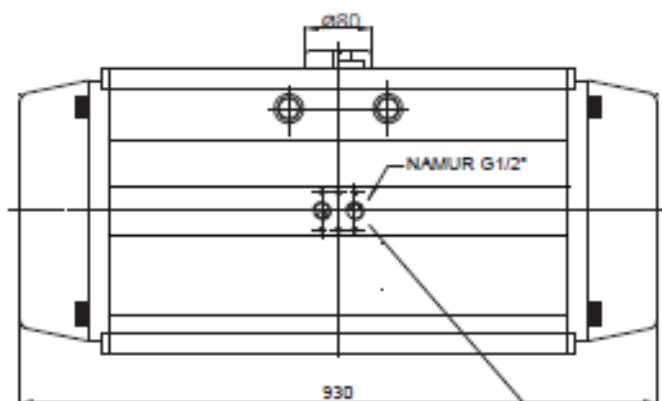
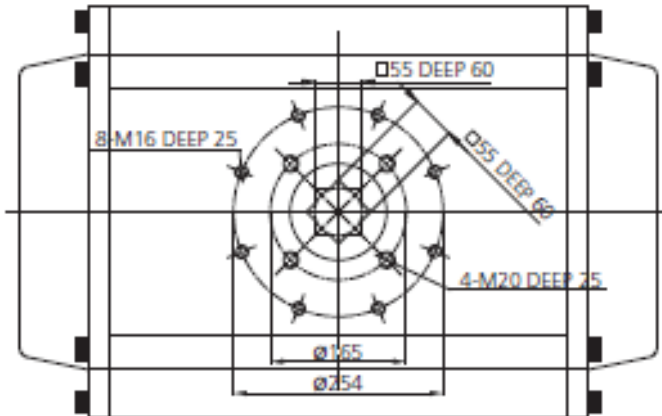


MT Series Pneumatic actuators

TEL (03) 9290 9813
INFO@FLUIDFLO.COM.AU
WWW.FLUIDFLO.COM.AU



Dimensions D400



MT Series Pneumatic actuators

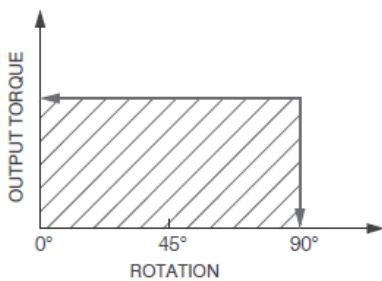
TEL (03) 9290 9813
 INFO@FLUIDFLO.COM.AU
 WWW.FLUIDFLO.COM.AU



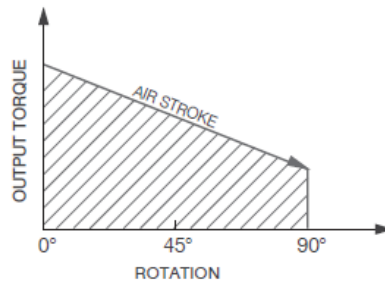
Output Torque Double Acting

| TORQUE @ AIR PRESSURE (BAR) | | | | | | | | | | |
|-----------------------------|--------|--------|--------|--------|--------|--------|--------|--------|--------|--------|
| MODEL | 2 | 2.5 | 3 | 4 | 4.5 | 5 | 5.5 | 6 | 7 | 8 |
| D40DA | 4.8 | 6 | 7.2 | 9.5 | 10.7 | 11.9 | 13.1 | 14.3 | 16.7 | 19.1 |
| D52DA | 8 | 10 | 12 | 16 | 18 | 20 | 21.9 | 23.9 | 27.9 | 31.9 |
| D63DA | 14.6 | 18.2 | 21.9 | 29.2 | 32.8 | 36.5 | 40.1 | 43.8 | 51.1 | 58.4 |
| D75DA | 20.1 | 25.1 | 30.1 | 40.1 | 45.1 | 50.2 | 55.2 | 60.2 | 70.2 | 80.3 |
| D83DA | 31.4 | 39.2 | 47 | 62.7 | 70.5 | 78.4 | 86.2 | 94.1 | 109.7 | 125.4 |
| D92DA | 45.1 | 56.4 | 67.7 | 90.3 | 101.6 | 112.9 | 124.1 | 135.4 | 158 | 180.6 |
| D105DA | 66.1 | 82.7 | 99.2 | 132.2 | 148.8 | 165.3 | 181.8 | 198.4 | 231.4 | 264.5 |
| D125DA | 100.3 | 125.4 | 150.5 | 200.6 | 225.7 | 250.8 | 275.9 | 301 | 351.1 | 401.3 |
| D140DA | 171 | 213.8 | 256.5 | 342 | 384.8 | 427.5 | 470.3 | 513 | 598.5 | 684 |
| D160DA | 266 | 332.5 | 399 | 532 | 598.5 | 665 | 731.5 | 798 | 931 | 1064 |
| D190DA | 425.6 | 532 | 638.4 | 851.2 | 957.6 | 1064 | 1170.4 | 1276.8 | 1489.6 | 1702.4 |
| D210DA | 532 | 665 | 798 | 1064 | 1197 | 1330 | 1463 | 1596 | 1862 | 2128 |
| D240DA | 796.5 | 961.9 | 1154.3 | 1539 | 1731.4 | 1923.8 | 2116.1 | 2308.5 | 2693.3 | 3078 |
| D270DA | 1169.6 | 1462.1 | 1754.5 | 2339.3 | 2631.7 | 2924.1 | 3216.5 | 3508.9 | 4093.7 | 4678.6 |
| D300DA | 1526 | 1908 | 2289 | 3052 | 3434 | 3815 | 4197 | 4578 | 5341 | 6104 |
| D350DA | 2285 | 2856 | 3427 | 4570 | 5141 | 5712 | 6283 | 6854 | 7997 | 9139 |
| D400DA | 3256 | 4069 | 4883 | 6511 | 7325 | 8139 | 8953 | 9767 | 11394 | 13022 |

DOUBLE ACTING



SPRING RETURN



Output Torque Spring Return

| TORQUE @ AIR PRESSURE (BAR) | | | | | | | | | | | | | | | | |
|-----------------------------|-------|-----|-------|-----|-------|------|-------|------|-------|------|-------|------|-------|------|---------------|------|
| | 2.5 | | 3 | | 4 | | 5 | | 6 | | 7 | | 8 | | SPRING OUTPUT | |
| | 0° | 90° | 0° | 90° | 0° | 90° | 0° | 90° | 0° | 90° | 0° | 90° | 0° | 90° | 0° | 90° |
| QTY | START | END | START | END | START | END | START | END | START | END | START | END | START | END | | |
| D52SR | 5 | 5.7 | 3.8 | 7.6 | 5.7 | | | | | | | | | | 6.2 | 4.3 |
| | 6 | 4.9 | 2.5 | 6.9 | 4.5 | 10.9 | 8.5 | | | | | | | | 7.4 | 5 |
| | 7 | 4 | 1.3 | 6 | 3.3 | 9.8 | 7.3 | 14 | 10.4 | | | | | | 8.6 | 5.9 |
| | 8 | | | 5.2 | 2 | 9.2 | 6 | 13.2 | 9.1 | 17.2 | 14.1 | | | | 9.9 | 6.7 |
| | 9 | | | 4.3 | 0.8 | 8.3 | 4.8 | 12.3 | 7.9 | 16.3 | 12.8 | 20.3 | 16.8 | | 11.1 | 7.6 |
| | 10 | | | | | 7.4 | 3.6 | 11.5 | 6.7 | 15.5 | 11.6 | 19.5 | 15.6 | | 12.4 | 8.5 |
| | 11 | | | | | 6.6 | 2.3 | 10.6 | 5.4 | 14.6 | 10.4 | 18.6 | 14.3 | 22.6 | 18.3 | 13.6 |
| 12 | | | | | | | 9.7 | 4.2 | 13.8 | 9.1 | 17.8 | 12.2 | 21.8 | 17.1 | 14.8 | 10.2 |

CONTINUES ON FOLLOWING PAGE →

MT Series Pneumatic actuators

TEL (03) 9290 9813
 INFO@FLUIDFLO.COM.AU
 WWW.FLUIDFLO.COM.AU



Output Torque Spring Return

| TORQUE @ AIR PRESSURE (BAR) | | | | | | | | | | | | | | | | | |
|-----------------------------|--------|------|-------|------|-------|------|-------|-------|-------|-------|-------|-------|-------|-------|---------------|-------|------|
| | 2.5 | | 3 | | 4 | | 5 | | 6 | | 7 | | 8 | | SPRING OUTPUT | | |
| | 0° | 90° | 0° | 90° | 0° | 90° | 0° | 90° | 0° | 90° | 0° | 90° | 0° | 90° | 0° | 90° | |
| QTY | START | END | START | END | START | END | START | END | START | END | START | END | START | END | | | |
| D63SR | 5 | 11.4 | 7.7 | 15 | 11.4 | 22.3 | 14.9 | | | | | | | | 10.4 | 6.8 | |
| | 6 | 10.1 | 5.7 | 13.6 | 9.3 | 20.9 | 16.6 | 28.3 | 23.9 | | | | | | 12.5 | 8.2 | |
| | 7 | 8.6 | 3.6 | 12.5 | 7.2 | 19.5 | 14.5 | 26.8 | 21.9 | | | | | | 14.6 | 9.6 | |
| | 8 | | | 10.9 | 5.1 | 18.2 | 12.4 | 25.5 | 19.8 | 32.8 | 27 | 40.1 | 34.3 | | 16.7 | 10.9 | |
| | 9 | | | | | 16.8 | 10.4 | 24.1 | 17.7 | 31.4 | 24.9 | 38.7 | 32.2 | | 18.8 | 12.3 | |
| | 10 | | | | | 1.4 | 8.2 | 22.8 | 15.6 | 30 | 22.8 | 37.3 | 30.1 | 44.7 | 37.4 | 20.9 | 13.7 |
| | 11 | | | | | | | 21.5 | 13.5 | 28.7 | 20.7 | 36 | 28 | 43.3 | 35.3 | 22.9 | 15 |
| | 12 | | | | | | | 20 | 11.4 | 27.3 | 18.6 | 34.6 | 25.9 | 41.9 | 33.3 | 25 | 16.4 |
| | D75SR | 5 | 14.5 | 10.6 | 19.4 | 15.5 | 29.5 | 25.7 | | | | | | | | 14.5 | 10.5 |
| | | 6 | 12.4 | 7.6 | 17.3 | 12.6 | 27.4 | 22.7 | 37.5 | 32.8 | | | | | | 17.4 | 12.7 |
| | | 7 | 10.4 | 4.8 | 15.2 | 9.7 | 25.3 | 19.9 | 35.4 | 29.9 | | | | | | 20.3 | 14.8 |
| | | 8 | | | 13.1 | 6.8 | 23.1 | 16.9 | 33.3 | 27 | 43.2 | 37 | 53.3 | 47 | | 23.2 | 16.9 |
| 9 | | | | | | 21 | 14.1 | 31.2 | 24.1 | 41.1 | 34.1 | 51.2 | 44.2 | | 26.1 | 19 | |
| 10 | | | | | | 19 | 11.1 | 28.8 | 21.2 | 39 | 31.2 | 49.1 | 41.2 | 59.1 | 51.2 | 29 | 21.1 |
| 11 | | | | | | | | 27 | 18.3 | 37 | 28.3 | 47 | 38.4 | 57 | 48.4 | 31.9 | 23.2 |
| 12 | | | | | | | | 24.9 | 15.4 | 34.9 | 25.4 | 44.9 | 35.4 | 54.9 | 45.4 | 34.7 | 25.3 |
| D83SR | | 5 | 23.3 | 16.1 | 31.1 | 24 | 46.8 | 39.7 | | | | | | | | 23 | 15.8 |
| | | 6 | 20.1 | 11.5 | 28 | 19.3 | 43.7 | 35.1 | 59.4 | 50.7 | | | | | | 27.6 | 19 |
| | | 7 | 17 | 6.9 | 24.8 | 14.8 | 40.5 | 30.5 | 56.2 | 46.2 | | | | | | 32.2 | 22.1 |
| | | 8 | | | 21.7 | 10.1 | 37.4 | 25.8 | 53.1 | 41.5 | 68.8 | 57.2 | 84.5 | 72.9 | | 36.8 | 25.3 |
| | 9 | | | | | 34.2 | 21.3 | 49.9 | 37 | 65.6 | 52.6 | 81.2 | 68.3 | | 41.4 | 28.5 | |
| | 10 | | | | | 31 | 16.6 | 46.7 | 32.3 | 62.4 | 48 | 78.1 | 63.7 | 93.8 | 79.3 | 46 | 31.6 |
| | 11 | | | | | | | 43.6 | 27.7 | 59.3 | 43.4 | 75 | 59.1 | 90.6 | 74.8 | 50.6 | 34.8 |
| | 12 | | | | | | | 40.4 | 23.2 | 56.1 | 38.9 | 71.7 | 54.5 | 87.4 | 70.2 | 55.2 | 38 |
| | D92S | 5 | 33.1 | 22 | 44.2 | 33.2 | 66.8 | 55.9 | | | | | | | | 34.4 | 23.3 |
| | | 6 | 28.4 | 15.2 | 39.6 | 26.4 | 62.2 | 49 | 84.8 | 71.6 | | | | | | 41.2 | 28 |
| | | 7 | 23.8 | 8.2 | 34.9 | 19.4 | 57.5 | 42.1 | 80.2 | 64.7 | | | | | | 48.1 | 32.7 |
| | | 8 | | | 31.3 | 12.6 | 52.9 | 35.2 | 75.5 | 57.9 | 98.1 | 80.5 | 120.7 | 103 | | 55 | 37.3 |
| 9 | | | | | | 48.2 | 28.4 | 70.9 | 51 | 93.5 | 73.6 | 116 | 96.1 | | 61.9 | 42 | |
| 10 | | | | | | 43.6 | 21.5 | 66.2 | 44.1 | 88.8 | 66.7 | 111.3 | 89.2 | 134.0 | 111.8 | 68.7 | 46.7 |
| 11 | | | | | | | | 61.5 | 37.2 | 84.1 | 59.9 | 106.6 | 82.4 | 129.2 | 105 | 75.6 | 51.4 |
| 12 | | | | | | | | 56.8 | 30.4 | 79.4 | 53 | 101.9 | 75.5 | 124.5 | 98.1 | 82.5 | 56 |
| D105SR | | 5 | 51 | 33.4 | 67.5 | 49.9 | 100.6 | 83 | | | | | | | | 49.2 | 31.6 |
| | | 6 | 44.7 | 23.5 | 61.1 | 40 | 94.2 | 73.2 | 127.3 | 106.2 | | | | | | 59.1 | 38 |
| | | 7 | 38.4 | 13.7 | 54.9 | 30.3 | 87.9 | 63.4 | 121 | 96.4 | | | | | | 68.9 | 44.3 |
| | | 8 | | | 48.5 | 20.4 | 81.6 | 53.5 | 114.7 | 86.5 | 147.7 | 119.6 | 180.8 | 152.7 | | 78.7 | 50.6 |
| | 9 | | | | | 75.3 | 43.7 | 108.4 | 76.8 | 141.5 | 109.8 | 174.5 | 142.9 | | 88.6 | 56.9 | |
| | 10 | | | | | 68.9 | 33.4 | 102 | 66.5 | 135.1 | 99.6 | 168.2 | 132.6 | 201.2 | 165.7 | 98.4 | 63.3 |
| | 11 | | | | | | | 95.7 | 57 | 128.7 | 90.1 | 161.8 | 123.1 | 194.8 | 156.2 | 108.3 | 69.6 |
| | 12 | | | | | | | 89.4 | 47.5 | 122.5 | 80.6 | 155.5 | 113.6 | 188.6 | 146.7 | 118.1 | 75.9 |
| | D125SR | 5 | 73 | 47 | 98 | 72 | 148 | 122 | | | | | | | | 79 | 52 |
| | | 6 | 63 | 31 | 88 | 56 | 138 | 107 | 188 | 157 | | | | | | 94 | 63 |
| | | 7 | 52 | 15 | 77 | 40 | 127 | 90 | 178 | 141 | | | | | | 110 | 73 |
| | | 8 | | | 67 | 25 | 117 | 75 | 167 | 125 | 217 | 176 | 268 | 226 | | 125 | 84 |
| 9 | | | | | | 107 | 59 | 157 | 109 | 207 | 159 | 257 | 210 | | 141 | 94 | |
| 10 | | | | | | 96 | 44 | 146 | 94 | 196 | 144 | 247 | 194 | 297 | 245 | 157 | 105 |
| 11 | | | | | | | | 136 | 78 | 186 | 128 | 236 | 178 | 286 | 228 | 173 | 115 |
| 12 | | | | | | | | 125 | 63 | 176 | 113 | 226 | 163 | 276 | 213 | 188 | 125 |

MT Series Pneumatic actuators

TEL (03) 9290 9813
 INFO@FLUIDFLO.COM.AU
 WWW.FLUIDFLO.COM.AU



Output Torque Spring Return

| | | TORQUE @ AIR PRESSURE (BAR) | | | | | | | | | | | | | | | | |
|--------|-------|-----------------------------|-------|------|-------|------|-------|------|-------|------|-------|------|-------|------|-------|---------------|------|------|
| | | 2.5 | | 3 | | 4 | | 5 | | 6 | | 7 | | 8 | | SPRING OUTPUT | | |
| SPRING | | 0° | 90° | 0° | 90° | 0° | 90° | 0° | 90° | 0° | 90° | 0° | 90° | 0° | 90° | 0° | 90° | |
| QTY | START | END | START | END | START | END | START | END | START | END | START | END | START | END | START | END | | |
| D140SR | 5 | 128 | 85 | 171 | 127 | 256 | 213 | | | | | | | | | | 129 | 86 |
| | 6 | 111 | 59 | 154 | 102 | 239 | 187 | 325 | 273 | | | | | | | | 155 | 103 |
| | 7 | 94 | 33 | 137 | 76 | 222 | 162 | 308 | 247 | | | | | | | | 181 | 120 |
| | 8 | | | 120 | 50 | 205 | 136 | 291 | 221 | 376 | 307 | 462 | 392 | | | | 206 | 137 |
| | 9 | | | | | 187 | 110 | 273 | 196 | 358 | 281 | 444 | 367 | | | | 232 | 155 |
| | 10 | | | | | 170 | 84 | 256 | 169 | 341 | 255 | 427 | 340 | 512 | 426 | | 258 | 172 |
| | 11 | | | | | | | 238 | 143 | 324 | 229 | 409 | 314 | 495 | 400 | | 284 | 189 |
| | 12 | | | | | | | 221 | 118 | 307 | 203 | 392 | 289 | 478 | 374 | | 310 | 206 |
| D160SR | 5 | 193 | 124 | 259 | 191 | 392 | 324 | | | | | | | | | | 208 | 140 |
| | 6 | 165 | 83 | 232 | 149 | 365 | 282 | 498 | 415 | | | | | | | | 250 | 168 |
| | 7 | 137 | 41 | 203 | 107 | 336 | 240 | 469 | 373 | | | | | | | | 292 | 196 |
| | 8 | | | 176 | 66 | 309 | 199 | 442 | 237 | 575 | 465 | 708 | 598 | | | | 333 | 223 |
| | 9 | | | | | 280 | 157 | 413 | 290 | 546 | 423 | 679 | 556 | | | | 375 | 251 |
| | 10 | | | | | 253 | 115 | 386 | 248 | 519 | 381 | 652 | 514 | 785 | 647 | | 417 | 279 |
| | 11 | | | | | | | 358 | 207 | 491 | 340 | 624 | 473 | 757 | 606 | | 458 | 307 |
| | 12 | | | | | | | 330 | 165 | 463 | 298 | 596 | 431 | 729 | 564 | | 500 | 335 |
| D190SR | 5 | 332 | 222 | 438 | 329 | 651 | 542 | | | | | | | | | | 309 | 200 |
| | 6 | 292 | 161 | 398 | 267 | 611 | 480 | 824 | 693 | | | | | | | | 371 | 240 |
| | 7 | 252 | 99 | 358 | 205 | 571 | 418 | 784 | 631 | | | | | | | | 433 | 280 |
| | 8 | | | 318 | 143 | 531 | 356 | 744 | 569 | 957 | 782 | 1169 | 995 | | | | 495 | 320 |
| | 9 | | | | | 491 | 295 | 704 | 507 | 917 | 720 | 1130 | 933 | | | | 557 | 360 |
| | 10 | | | | | 451 | 233 | 664 | 446 | 877 | 658 | 1090 | 871 | 1302 | 1084 | | 618 | 400 |
| | 11 | | | | | | | 624 | 384 | 837 | 597 | 1050 | 809 | 1263 | 1022 | | 680 | 440 |
| | 12 | | | | | | | 584 | 322 | 797 | 535 | 1010 | 748 | 1223 | 960 | | 742 | 480 |
| D210SR | 5 | 390 | 285 | 523 | 418 | 789 | 684 | | | | | | | | | | 380 | 275 |
| | 6 | 335 | 209 | 468 | 342 | 734 | 608 | 1000 | 874 | | | | | | | | 456 | 330 |
| | 7 | 280 | 133 | 413 | 266 | 679 | 532 | 945 | 798 | | | | | | | | 532 | 385 |
| | 8 | | | 358 | 190 | 624 | 456 | 890 | 722 | 1156 | 988 | 1422 | 1254 | | | | 608 | 440 |
| | 9 | | | | | 569 | 380 | 835 | 646 | 1101 | 912 | 1367 | 1178 | | | | 684 | 495 |
| | 10 | | | | | 514 | 304 | 780 | 570 | 1046 | 836 | 1312 | 1102 | 1578 | 1368 | | 760 | 550 |
| | 11 | | | | | | | 725 | 494 | 991 | 760 | 1257 | 1026 | 1523 | 1292 | | 836 | 605 |
| | 12 | | | | | | | 670 | 418 | 936 | 684 | 1202 | 950 | 1468 | 1216 | | 912 | 660 |
| D240SR | 5 | 552 | 409 | 744 | 600 | 1129 | 985 | | | | | | | | | | 554 | 410 |
| | 6 | 470 | 297 | 662 | 489 | 1047 | 874 | 1432 | 1259 | | | | | | | | 665 | 492 |
| | 7 | 388 | 187 | 580 | 379 | 964 | 764 | 1349 | 1149 | | | | | | | | 775 | 575 |
| | 8 | | | 498 | 268 | 883 | 653 | 1267 | 1037 | 1652 | 1422 | 2037 | 1807 | | | | 886 | 656 |
| | 9 | | | | | 800 | 542 | 1185 | 926 | 1569 | 1311 | 1954 | 1696 | | | | 998 | 739 |
| | 10 | | | | | 718 | 431 | 1103 | 816 | 1488 | 1201 | 1872 | 1586 | 2257 | 1970 | | 1108 | 821 |
| | 11 | | | | | | | 1021 | 705 | 1406 | 1090 | 1791 | 1474 | 2176 | 1859 | | 1219 | 903 |
| | 12 | | | | | | | 939 | 594 | 1323 | 979 | 1708 | 1363 | 2093 | 1748 | | 1330 | 985 |
| D270SR | 5 | 903 | 675 | 1195 | 968 | 1779 | 1552 | | | | | | | | | | 787 | 560 |
| | 6 | 790 | 519 | 1083 | 811 | 1667 | 1396 | 2252 | 1981 | | | | | | | | 943 | 672 |
| | 7 | 679 | 361 | 972 | 654 | 1556 | 1238 | 2141 | 1823 | | | | | | | | 1101 | 783 |
| | 8 | | | 860 | 497 | 1444 | 1081 | 2029 | 1666 | 2614 | 2252 | 3199 | 2836 | | | | 1258 | 895 |
| | 9 | | | | | 1332 | 923 | 1917 | 1509 | 2502 | 2094 | 3087 | 2678 | | | | 1416 | 1007 |
| | 10 | | | | | 1220 | 767 | 1805 | 1352 | 2390 | 1937 | 2974 | 2521 | 3560 | 3107 | | 1572 | 1119 |
| | 11 | | | | | | | 1693 | 1194 | 2278 | 1779 | 2862 | 2364 | 3448 | 2949 | | 1730 | 1231 |
| | 12 | | | | | | | 1582 | 1037 | 2167 | 1623 | 2751 | 2207 | 3336 | 2792 | | 1887 | 1342 |

MT Series Pneumatic actuators

TEL (03) 9290 9813
 INFO@FLUIDFLO.COM.AU
 WWW.FLUIDFLO.COM.AU



Output Torque Spring Return

| TORQUE @ AIR PRESSURE (BAR) | | | | | | | | | | | | | | | | | | | |
|-----------------------------|-----------|------|-----------|------|-----------|------|-----------|------|-----------|------|-----------|------|-----------|------|-----------|------|---------------|------|------|
| SPRING | 2 | | 2.5 | | 3 | | 4 | | 5 | | 6 | | 7 | | 8 | | SPRING OUTPUT | | |
| | 0° | 90° | 0° | 90° | 0° | 90° | 0° | 90° | 0° | 90° | 0° | 90° | 0° | 90° | 0° | 90° | 0° | 90° | |
| QTY | START END | | START END | | START END | | START END | | START END | | START END | | START END | | START END | | START END | | |
| D300SR | 5 | 715 | 347 | 1097 | 729 | | | | | | | | | | | | 1061 | 730 | |
| | 6 | 553 | 112 | 935 | 494 | 1316 | 875 | | | | | | | | | | 1273 | 876 | |
| | 7 | | | 772 | 258 | 1153 | 639 | 1916 | 1402 | | | | | | | | 1485 | 1022 | |
| | 8 | | | | | 991 | 403 | 1754 | 1166 | 2517 | 1929 | | | | | | | 1697 | 1168 |
| | 9 | | | | | | | 1592 | 930 | 2355 | 1693 | 3118 | 2456 | | | | | 1909 | 1314 |
| | 10 | | | | | | | 1430 | 695 | 2193 | 1458 | 2956 | 2221 | 3719 | 2984 | 4482 | 3747 | 2122 | 1460 |
| | 11 | | | | | | | | | 2030 | 1222 | 2793 | 1985 | 3556 | 2748 | 4319 | 3511 | 2334 | 1606 |
| | 12 | | | | | | | | | 1868 | 986 | 2631 | 1749 | 3394 | 2512 | 4157 | 3275 | 2546 | 1752 |
| | D350SR | 5 | 982 | 393 | 1553 | 964 | | | | | | | | | | | | 1702 | 1173 |
| | | 6 | 721 | 15 | 1292 | 586 | 1863 | 1157 | | | | | | | | | | 2043 | 1408 |
| | | 7 | | | 1031 | 208 | 1602 | 779 | 2745 | 1922 | | | | | | | | 2383 | 1642 |
| | | 8 | | | | | 1341 | 401 | 2484 | 1544 | 3626 | 2686 | | | | | | 2724 | 1877 |
| 9 | | | | | | | | 2224 | 1165 | 3366 | 2307 | 4508 | 3449 | | | | 3064 | 2112 | |
| 10 | | | | | | | | 1963 | 787 | 3105 | 1929 | 4247 | 3071 | 5390 | 4214 | 6532 | 5356 | 3405 | 2346 |
| 11 | | | | | | | | | | 2844 | 1551 | 3986 | 2693 | 5129 | 3836 | 6271 | 4978 | 3745 | 2581 |
| 12 | | | | | | | | | | 2584 | 1172 | 3726 | 2314 | 4869 | 3457 | 6011 | 4599 | 4086 | 2816 |
| D400SR | 7 | 1215 | 56 | 2028 | 869 | | | | | | | | | | | | 2880 | 1837 | |
| | 8 | | | 1736 | 411 | 2550 | 1225 | | | | | | | | | | 3292 | 2100 | |
| | 9 | | | | | 2259 | 768 | 3887 | 2396 | | | | | | | | 3703 | 2362 | |
| | 10 | | | | | 1967 | 311 | 3595 | 1939 | 5223 | 3567 | | | | | | 4115 | 2624 | |
| | 11 | | | | | | | 3303 | 1482 | 4931 | 3110 | 6559 | 4738 | | | | 4526 | 2887 | |
| | 12 | | | | | | | 3012 | 1025 | 4640 | 2653 | 6268 | 4281 | 7895 | 5908 | 9523 | 7536 | 4938 | 3149 |
| | 13 | | | | | | | | | 4348 | 2195 | 5976 | 3823 | 7603 | 5450 | 9231 | 7078 | 5349 | 3412 |
| | 14 | | | | | | | | | 4057 | 1738 | 5685 | 3366 | 7312 | 4993 | 8940 | 6621 | 5761 | 3674 |
| | 15 | | | | | | | | | 3765 | 1281 | 5393 | 2909 | 7020 | 4536 | 8648 | 6164 | 6172 | 3937 |
| | 16 | | | | | | | | | | | 5101 | 2452 | 6728 | 4079 | 8356 | 5707 | 6584 | 4199 |

| WEIGHTS IN KG | | |
|---------------|---------------|---------------|
| MODEL | DOUBLE ACTING | SPRING RETURN |
| D52 | 1.38 | 1.45 |
| D-63 | 2.03 | 2.05 |
| D-75 | 2.7 | 2.9 |
| D-83 | 3.13 | 3.6 |
| D-92 | 4.6 | 5.22 |
| D-105 | 6.77 | 6.85 |
| D-125 | 8.9 | 10.11 |
| D-140 | 13.25 | 15.55 |
| D-160 | 20.14 | 24 |
| D-190 | 31.3 | 35.25 |
| D-210 | 46.8 | 54.8 |
| D-240 | 67.28 | 80.2 |
| D-270 | 96.9 | 118 |
| B-300 | 110 | 130 |
| B-350 | 186.5 | 234.4 |
| B-400 | 289 | 360.4 |

STAINLESS STEEL VERSION



SWITCH BOXES



SOLENOID VALVES

