

MODEL HLC-2000 DUAL MODE, HYDRONIC LOOP CONTROLLER

THIS SECTION FACTORY PRE-WIRED.

MAINS POWER
120VAC, 50-60HZ
IF FROM EMERGENCY POWER CCT.1

CONTROL INHIBIT
RELOCATED, MOUNTED LOOP CONTROLLER INHIBIT RELAY [BY OTHERS, OPTIONAL]

FIELD SENSOR POWER (+VDC)
IS 18 - 26VDC, UNREGULATED

FLOW SENSORS
FLOW SENSORS MAY BE MAINTAINED OR PULSED CONTACT TYPE SENSORS
P/N 1000E936 DIFF. PRESS. TYPE SENSOR RECOMMENDED

FS1,2,3 REQUIRED FOR A 3 PUMP SYSTEM

FS1 REQUIRED FOR 1 OR 2 PUMP SYSTEM

TEMPERATURE SENSORS
12 OR 3 WIRE TYPE [REQUIRED]

4 - 20 mA = 0 - 140 deg F

SUPPLY SENSOR [REQUIRED]

4 - 20 mA = 0 - 140 deg F

OUTDOOR SENSOR [OPTIONAL]

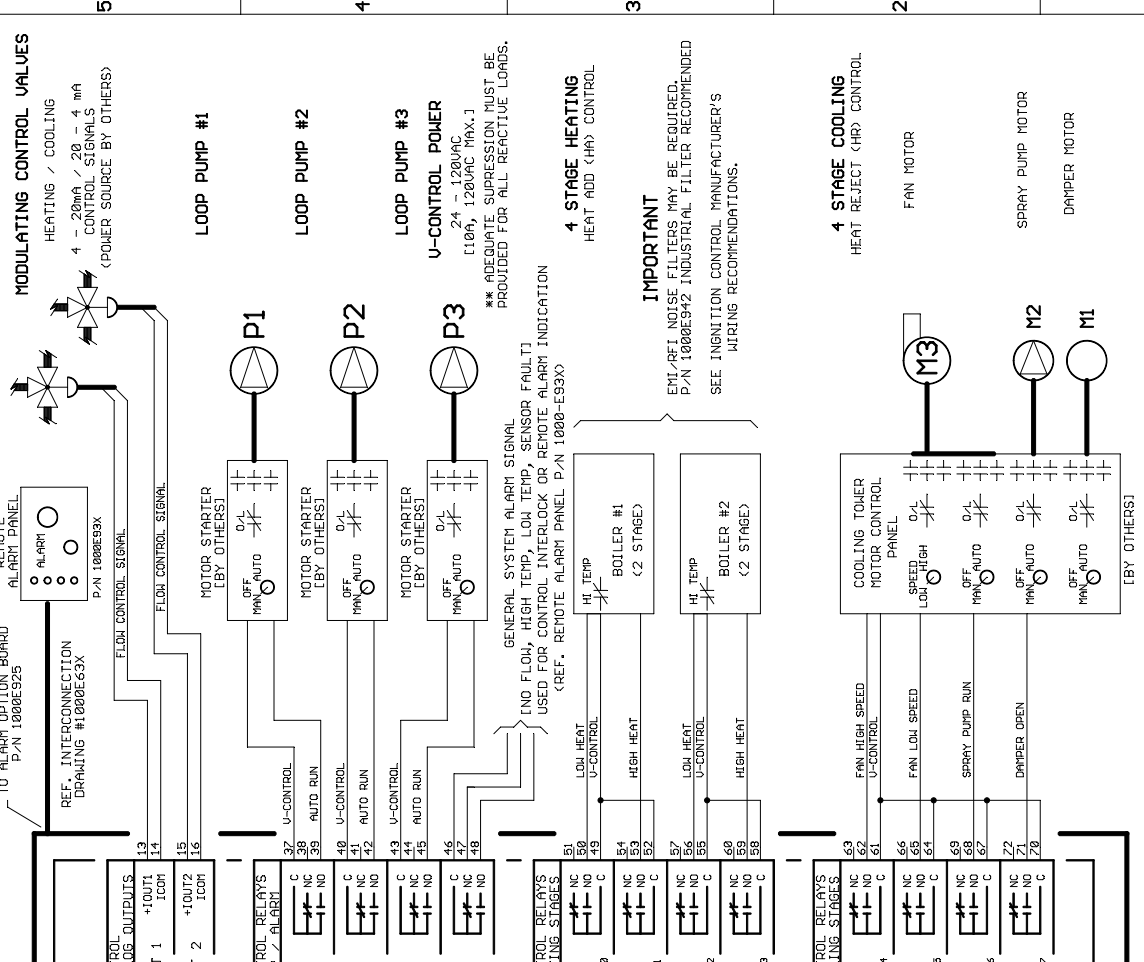
0 - 20 mA
-36 - +140 deg F

SUMP SENSOR [OPTIONAL]

4 - 20 mA = 0 - 140 deg F

NOTES:
THE HEAT PUMP LOOP CONTROLLER MUST BE INSTALLED AND OPERATED IN ACCORDANCE WITH THE INSTRUCTION MANUAL.

ALL WIRING MUST BE INSTALLED IN ACCORDANCE WITH HORUS TECHNICAL BULLETIN #HTB1124 RECOMMENDED WIRING PROCEDURES FOR INDUSTRIAL INSTRUMENTATION AND CONTROL SYSTEMS.



DD NOT SCALE DRAWING	DATE	TITLE
DESIGNED	02/NOV/15	HEAT PUMP LOOP CONTROLS
DRAWN	BHU	DOCUMENT NUMBER
APPROVED		1000-E100

CLIENT: HORUS TECHNOLOGIES INC. (AUBURN, INDIANAPOLIS, CHANDLER)

PROJECT: SCHEMATIC HEAT PUMP LOOP CONTROLS

Doc No: 1000-E100