



DUAL MODE HYDRONIC LOOP CONTROLLER MODEL: HLC-2000 SERIES

11-17075 Leslie St., Newmarket, Ontario, Canada L3Y 8E1 Ph 905 895-7069



Key Features

- Industrial Design with NEMA 4 Enclosure.
- LCD display, LED Annunciator and Keypad for system status, configuration & testing.
- 4 Temperature signal inputs for Supply, Return, Outdoor and Sump Sensors.
- 8-16 Stages Heat/Cool (CFH/CFC) Relays with independently adjustable Set-points.
- 2 Channel Analog Outputs for Proportional Heat/Cool Control (Valves, Pumps, Fans).
- 1-4 Pump Control Relays with Automatic Changeover and Energy Saving Pump Demand Control.
- 1-4 Flow Sensor Inputs for signals from Paddle Switch/Pulse or Diff. Press. Sensor
- Fieldbus comms. port for Remote Status Indicator/Annunciator or BAC Systems.
- Easy to set-up, operate and maintain.

Applications

The HLC 2000 Series Hydronic Loop Controller provides flow and temperature control for industrial and commercial water source heating and cooling systems.

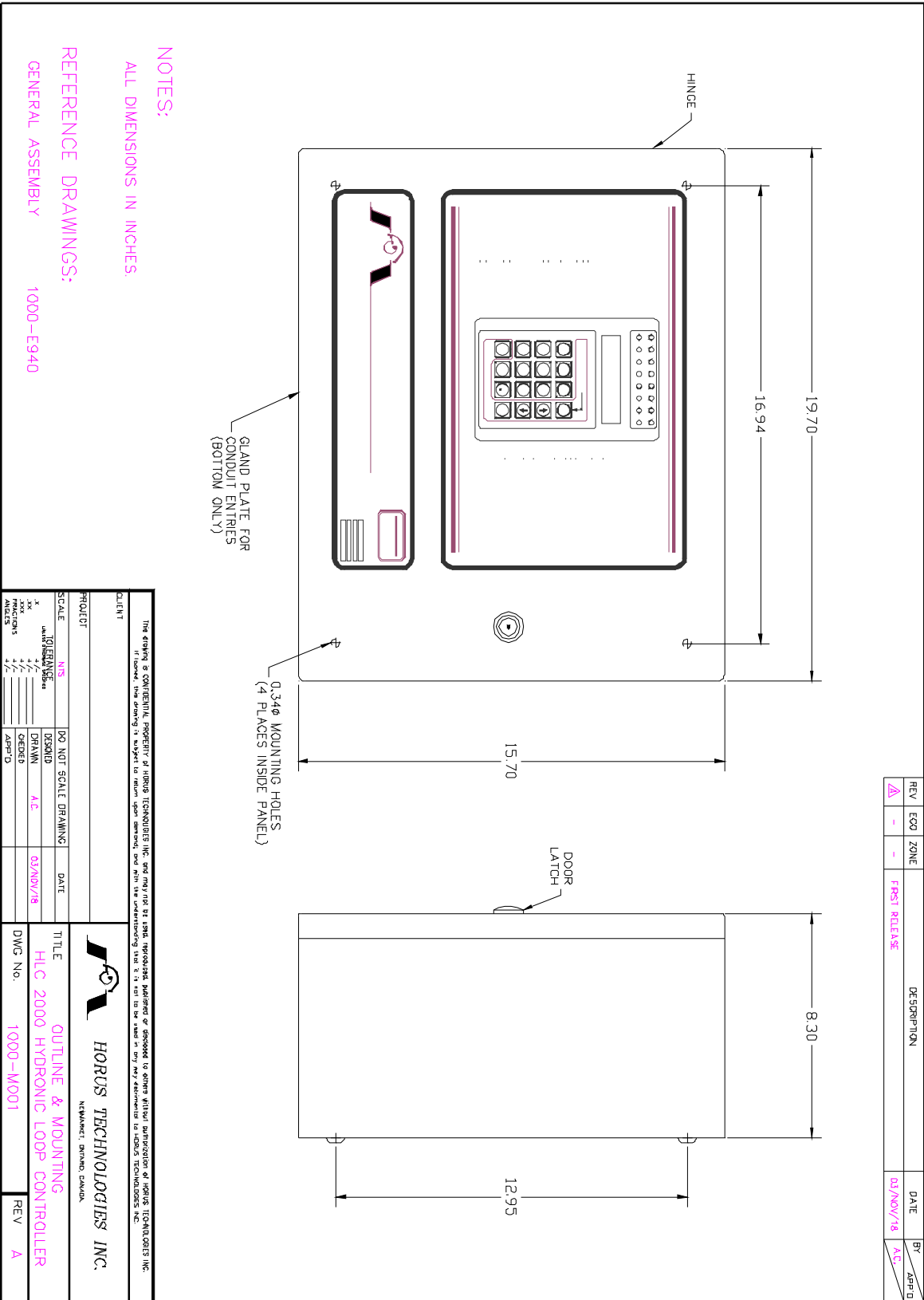
The HLC 2000 combines the functions of a Multiplex Pump controller with a Dual Mode Temperature controller (Heat/Cool Relay & Proportional Analog). The single control panel simplifies installation, operation and maintenance of the loop control system.

The HLC-2000 is used on:

- Water Source Heat Pump Systems
- Boiler Heating (Primary) Loops
- Cooling Tower Condenser Loops
- Geothermal Heating/Cooling Systems
- Heat Exchanger Protection Systems

Technical Data

Voltage	120 VAC, 60Hz
Power	1.25 Amps
Physical	19.7x15.7x8.3 inches 500x400x200 mm
Weight	26 Lbs. (12Kg)
Sensor Inputs	
Temperature	4-20ma into 250 ohms
Flow	Contact Closure, 24V/10mA
Relay Outputs	Form 'C' Contacts 20A @ 30VDC/120VAC
Analog Outputs	4-20mA into 900 ohms (max)



REV	ECO	ZONE	DESCRIPTION	DATE	BY
Δ	-	-	FIRST RELEASE	03/NOV/18	A.C.

NOTES:
 ALL DIMENSIONS IN INCHES.
 REFERENCE DRAWINGS:
 GENERAL ASSEMBLY 1000-E940

<p>This drawing is CONFIDENTIAL PROPERTY of HORUS TECHNOLOGIES INC. and may not be used, reproduced, patented or approved to other without authorization of HORUS TECHNOLOGIES INC. If honored, this drawing is subject to return upon demand, and with the understanding that it is not to be used in any way detrimental to HORUS TECHNOLOGIES INC.</p>		<p>HORUS TECHNOLOGIES INC. NETWORK, DRIVING CANADA</p>	
CLIENT		TITLE	OUTLINE & MOUNTING
PROJECT		DWG No.	1000-M001
SCALE	N/S	DO NOT SCALE DRAWING	DATE
DESIGNED		DRAWN	A.C.
CHECKED		DATE	03/NOV/18
APPROVED		REV	A

IMPORTANT NOTICE

HORUS Technologies and its subsidiaries (HORUS) reserve the right to make changes to their products or to discontinue any product or service without notice, and advise customers to obtain the latest version of relevant information to verify, before placing orders, that information being relied on is current and complete. All products are sold subject to the terms and conditions of sale supplied at the time of order acknowledgment, including those pertaining to warranty, patent infringement, and limitation of liability.

Copyright © 2000, HORUS Technologies Incorporated