

MPS22-HW#17

290: 15, 23, 24

291: 51

292: 72ab

271: 22, 28

272: 46, 48

249: 34

226: 2, 3

Select the correct number that corresponds to the right answer. There are more answers than questions. The answers may be repeated.

1) a

2) b

3) c

4) d

5) e

6) f

7) Positive

8) Negative

9) 23

10) $-5 \leq x \leq 4.4$ and hidden areas at $x = -5$ and near the origin

11) $-5 \leq x \leq 4.4$ and no hidden areas

12) $\frac{x^3}{4} + \frac{x}{2} + 1$

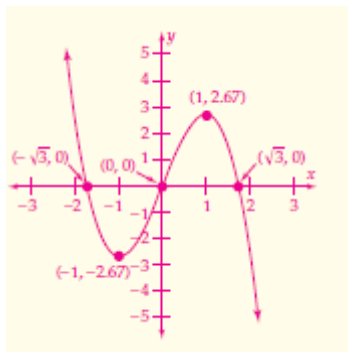
13) $y = -1$ window: $-31 \leq x \leq 35$

14) $t^2 + t - 2$

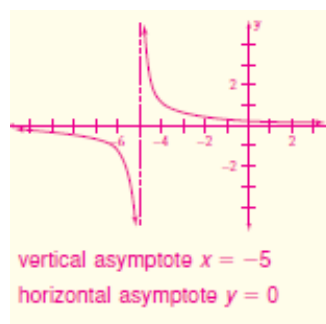
15) In standard viewing: it does not rise at far right and fall at far left

16) In standard viewing: it does not fall at far right and rise at far left

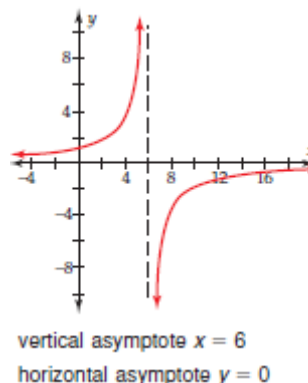
17)



18)



19)



20) 26;

