

MPS22-HW#18

343: 14, 15

290: 10, 16, 25

291: 52, 68

292: 72c

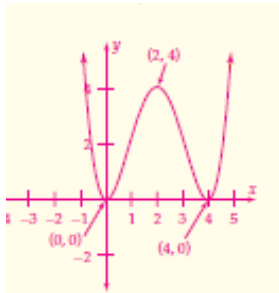
271: 23

272: 49

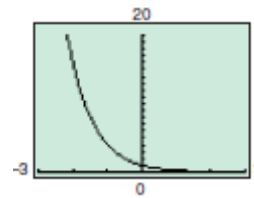
249: 35

Select the correct number that corresponds to the right answer. There are more answers than questions. The answers may be repeated.

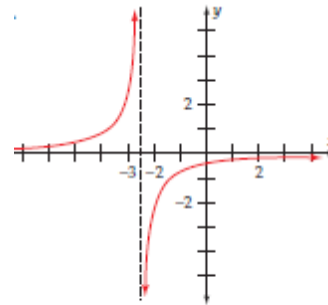
- 1) Hole at  $x=1$ ; vertical asymptote at  $x=0$
- 2) 30
- 3)  $-5 \leq x \leq 5$  and  $-8 \leq y \leq 8$
- 4) a
- 5) b
- 6) c
- 7) d
- 8) e
- 9) f
- 10)  $y=1$ ; any window with  $-20 \leq y \leq 20$
- 11) -30
- 12)  $-8 \leq x \leq 8$  and  $-5 \leq y \leq 5$
- 13) horizontal asymptote at  $c=0$ ; the amount of the drug gets very high
- 14)  $-1 \leq x \leq 1$  and  $-1 \leq y \leq 1$
- 15) hole at  $x=0$ ; no vertical asymptote
- 16) horizontal asymptote at  $c=0$ ; the amount of the drug gets very small
- 17)  $y=0$ ; any window with  $-20 \leq x \leq 20$
- 18)



19)

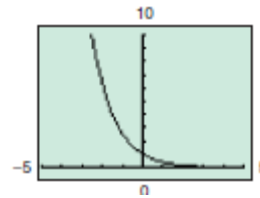


20)

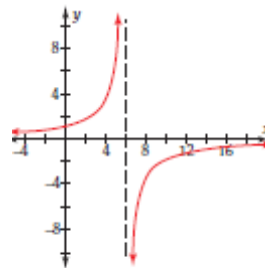


vertical asymptote  $x = -2.5$   
horizontal asymptote  $y = 0$

21)



22)



vertical asymptote  $x = 6$   
horizontal asymptote  $y = 0$