

MAT-120 – HW #7– Answers

Please select the correct answer number of each question. There are more answers than questions. Answers may be repeated.

1.

82% or more of the scores were at or below Angela's score; 18% or more of the scores were above Angela's score.

2.

Ranked data for males: 3 6 6 7 11 13 23 34 40 369  
Ranked data for females: 2 2 3 4 5 6 8 9 20 58

3.

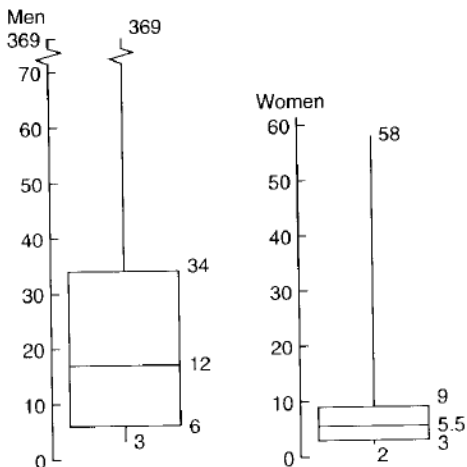
Five-number summary for males: low = 3,  $Q_1 = 6$ , median = 12,  $Q_3 = 34$ , high = 369; IQR = 28. Five-number summary for females: low = 2,  $Q_1 = 3$ , median = 5.5,  $Q_3 = 9$ , high = 58, IQR = 6.

4.

No, the score 82 might have a percentile rank less than 70.

5.

Number of Male and Female Professors at Colleges and Universities in Hawaii



6.

Ranked data: 1.3 4.0 5.8 6.0 6.0 6.1 6.1 6.2 6.4 6.4  
6.4 6.7 7.2 10.1 10.2 (Note: Some calculators such as the  
TI-82 will sort the data for you.)

7.

Median rank = 8; median = 6.2% increase; quartile rank = 4;  
 $Q_1$  = 6.0% increase;  $Q_3$  = 6.7% increase; low value = 1.3% in-  
crease; high value = 10.2% increase.

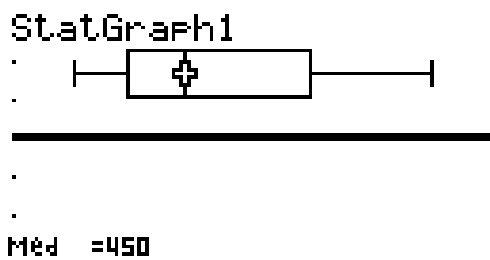
8.

Ranked data: 2 5 7 8 8 11 12 14 20 23 23 25 26  
27 28 29 31 36 36 42  
.. ..

9.

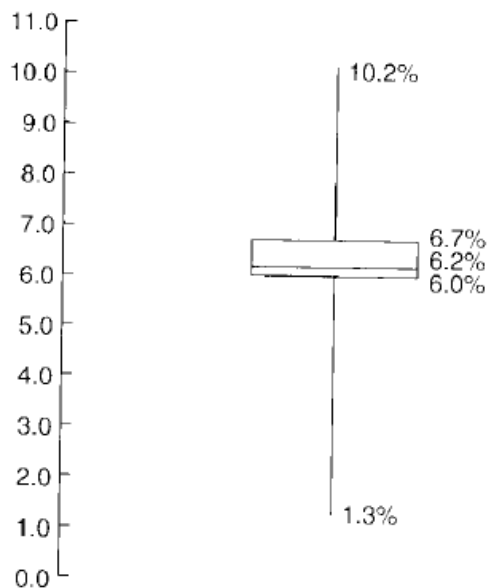
Ranked data: 280, 300, 310, 360, 370, 400, 410, 432, 470, 560, 600, 640, 650, 800, 800, 830

10.



11.

Percentage Increase in Faculty Salaries in Oregon



12.

Ranked data: 280, 300, 310, 360, 370, 400, 410, 430, 470, 560, 600, 640, 650, 800, 800, 830

13.

Median rank = 10.5; median = 23 months; quartile rank = 5.5;  
 $Q_1 = 9.5$  months;  $Q_3 = 28.5$  months; low value = 2 months; high  
value = 42 months.

15.

min: 280, Q1: 365, Q2: 450, Q3: 645, max: 830