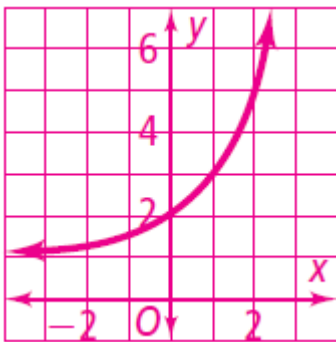


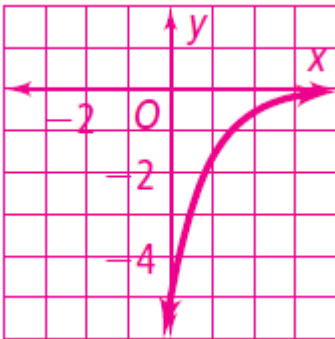
MRS22QCE/MPS21 –HW- 4

Please select the correct answer number for each question. There are more answers than questions. Answers may be repeated.

1) **\$39,624.11**



2)

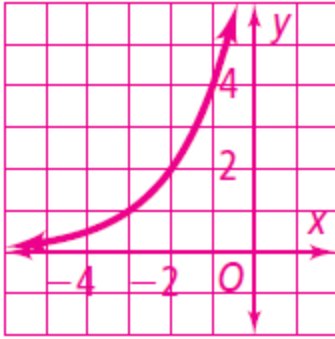


3)

4)  **$y = 8(0.5)^{0.0154x}$ ; about 2.7 mg**

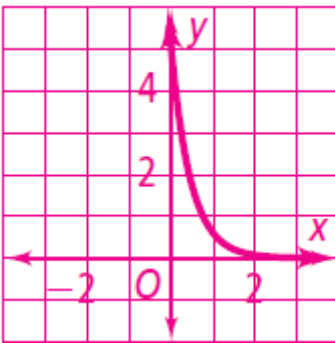
5)

**The student reversed the horizontal and vertical translations of  $h$  and  $k$ . The graph shifts the parent function left 3 units and up 4 units.**



6)

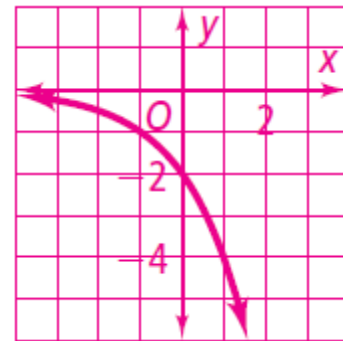
7) **7.3891**



8)

9) **about 9.9 yr**

10)  **$y = 122(0.922)^x + 68$**



11)

$$y = -4\left(\frac{1}{2}\right)^x;$$

12)  **$y = -4\left(\frac{1}{2}\right)^{x-2} + 3$**

13) **about 35 minutes**

