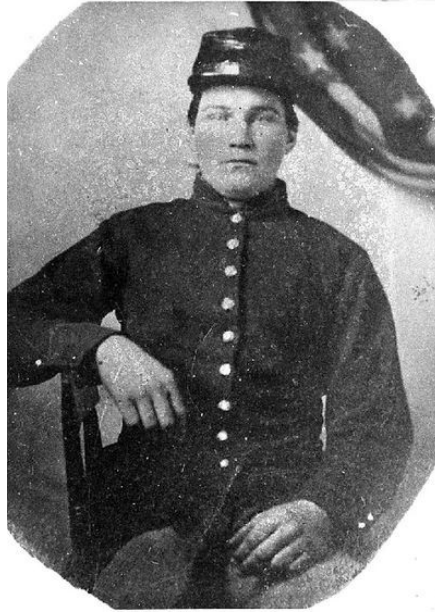


Pvt. Benjamin Franklin Beall

Company "C"



Benjamin Franklin Beall was born in 1844 and died in 1928.

He was married to Brunelda V. (Beall) who was born 1851 and died before him, in 1920. On draft eligibility documents, dated about 1862, he was listed as a farmer near Baltimore, Md. Benjamin served in Company C, Maryland 7th Infantry Regiment 1862- 1865. (Some records show he went in as a corporal and came out as a private. I expect that information has been transposed or wrongly entered.)

Pvt. Beall was stationed on South Mountain (about 10 miles from where we now live) during 1863. Later fought in Battle of Wilderness and at Petersburg, VA. Wounded (shot with a Minié ball through both legs) at Petersburg, VA. He was transported to Washington, DC for medical treatment and recovery.

In 1873, he was given a pension of \$3.00 per month. After the Civil War and his subsequent recovery, he walked (yes, *walked*) to Kansas where he obtained a farm and built a house made of sod. There he married his wife Brunelda, and raised a family.

During the Oklahoma Land Rush of 1889, he rode a horse to a lot near Nash, Oklahoma and staked a claim to a 160 acre plot of land. He lived and farmed in Nash until the end of his life.

Reports were that he was last seen near a stream where he had gone to fish.

