

## Contents

- 01: New News Starts
- 02: Our Business Member
- 03: New News Continues
- 03: Movie Matinee
- 04: Out to Lunch Bunch
- 04: Birthday Celebration
- 04: Flu, Cold, RSV and Covid
- 04: Army Navy Football
- 04: Christmas Potluck
- 05: Due & Application Form
- 06: Election Information



## Announcements

**Closed December 25<sup>th</sup> for Christmas**  
**Bingo Dec. 26<sup>th</sup> Cancelled**

## New News Starts

During the month of December we will hear the most popular greeting, "Merry Christmas," spoken by many repeatedly. Yet how many know what they're saying or what it means? For many it is just an accepted holiday greeting.

The word merry means: "full of cheerfulness, liveliness, and good feeling." The word Christmas means: "a Christian feast that celebrates the birth of Jesus Christ." Put together, the greeting means: "to be full of cheer because we are celebrating the birth of Jesus Christ, who came into the world to offer salvation to the world."

## DAS Meeting Information



**DAS Board of Directors Meeting**  
**8:00AM Saturday, Dec. 13<sup>th</sup>**  
**DAS General Membership Meeting**  
**10:00AM Saturday, Dec. 13<sup>th</sup>**

## DAS Online Sites

[DALLAS AREA SENIORS](https://www.dallasareasenior.net)

<https://www.dallasareasenior.net>

[Facebook](#)

## Our Business Members



312 Main St. \*Hearing Aids  
Dallas, OR 97338 \*Hearing Test  
503-623-0290  
\*Service and Programming most  
Hearing Aids  
\*Video-Otoscopy & Wax Removal  
We honor most Medicare supplement plans

### Willamette Valley Fiber

988 SE Jefferson St.  
Dallas, Oregon 97338  
503-837-1700 (After Hours Support  
Press Option #1)

### Tim's Automotive Specialties

172 SW Washington St,  
Dallas, OR 97338  
(503) 623-9774

### Jefferson Lodge Memory Care

Come on by for your tour!  
The Difference Between Living and Living Well!  
664 SE Jefferson Street  
Dallas OR 97338  
503-623-8104



201 NE Polk Station Road, Dallas, OR  
(971) 718-4042

*All Are Welcome All Are Loved*



976 SW Hayter St. Dallas, OR 97338  
503-623-8277 dallasfour.com

### Riddle Me This

1. What has four wheels and flies?
2. Why can't you trust an atom?
3. What did one plate say to the other?

**Answers on Next Page**

## Answers to Riddles

1. A garbage truck.
2. Because they make up everything.
3. Lunch is on me.

## New News Continues

While the date of Christ's birth has been debated, the December 25<sup>th</sup> date was adopted in the year 221 and was universally accepted. Regardless of the date, the Greeting "Merry Christmas," still carries the message of celebrating Christ's birth. This accepted and popular greeting is used by both Christians and non-Christians alike.

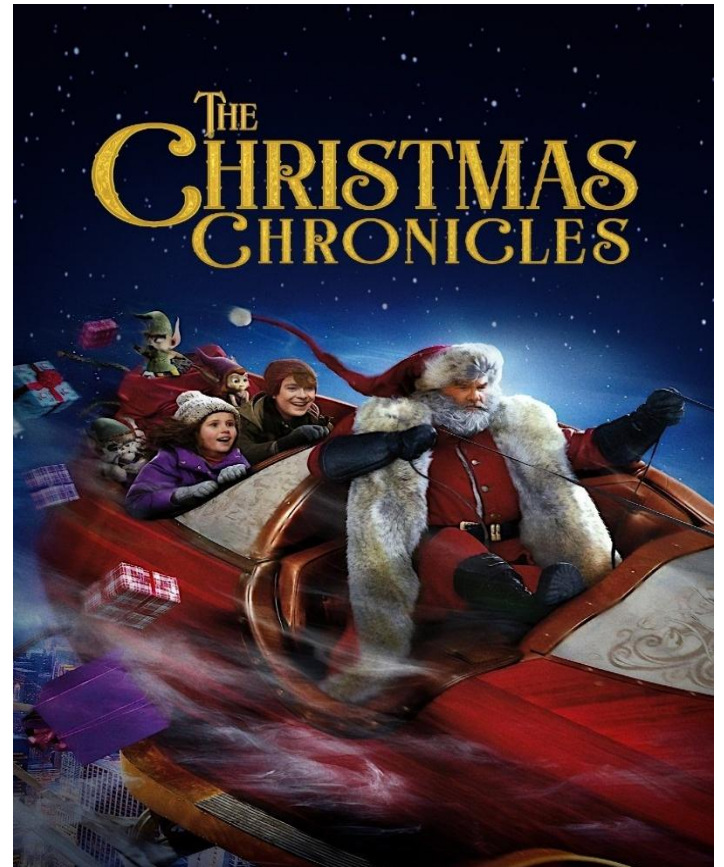
As someone once said, "Jesus is the reason for the season." So, we want to wish you all a true "Merry Christmas!" Let's truly celebrate with cheerfulness the true gift offered to all by the one whose birthday we are celebrating.

**Christmas Nativities:** December 6th as part of the Christmas Town celebration the center will be participating by holding a Nativity Display from 2:00 to 7:30, We will also have donut holes and wassail. This free event's purpose is to raise awareness that Dallas has a vibrant senior center and hopefully encourage membership growth. Additionally, as part of the Christmas Town event it fosters goodwill, and a sense of community participation.

If you have a nativity that we could display for that day, please contact Julie at the front desk. Nativities could be brought on Friday the 5th, or Saturday morning.

Please help this event be successful by either loaning us a nativity or stopping by to view the display.

**Movie Matinee:** This month's movie will be The Christmas Chronicles. This movie will be shown on Dec. 8<sup>th</sup> at 3PM downstairs at the senior center. There will be a concession stand for candy during the movie. Money raised from concession sales will go to pay for the license we need to show movies.







**Lunch Bunch:** Dec. Out to Lunch Bunch, are you hungry for good food and fellowship? You are welcome to join us!

**North Dallas Bar & Grill**

**170 E. Ellendale Ave,**

**Dallas, OR 97338**

**(503) 623-4494**

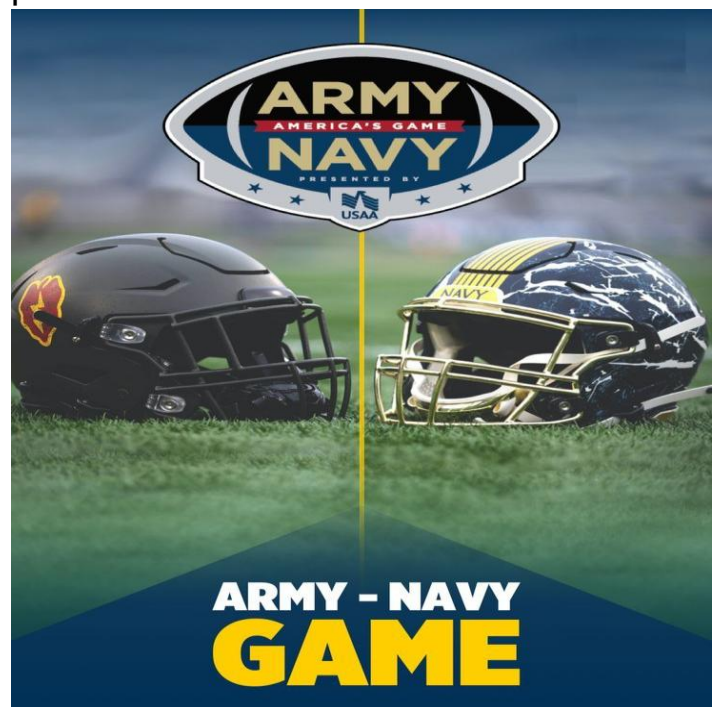
**Thursday, Dec. 11<sup>th</sup>, 11:30 AM**

**Text Shirley Hill at 503-871-0843 or sign up at the Senior Center if you plan to come.**

**Birthdays This Month:** These people are celebrating a birthday this month. Dick Burnett, Jim Chaney, Julie Coleman, Brian Dalton, Mary Dawson, George Fulton, Judy Greening, Barbara Henry, Emily Herbert, Mary Helen Jackson, Charlotte Lough, Mary Loveless, John Price, Phyllis Franks-Smith, Julie Swesey, Eileen Watts. If you see these folks, please wish them a Happy Birthday for the month of December.

**Flu, Cold, RSV and Covid:** Covid has been rampant since this last summer. Cold and Flu season is full swing right now. Please, if you are sick staying at home is good for you and the senior center. Do not come into the senior center. We have many members with compromised immune systems. It is more difficult for them to overcome an illness.

**Army Navy Football:** This year's Army Navy football game is on Dec. 13th. Our general membership meeting will be on Dec. 13th. We are going to have an Army Navy football game. Game start at 12PM. Sign-Up ends Dec. 10<sup>th</sup>. There will be a donation jar for donations to help pay for our license to show movies and TV shows. So, if you have a couple dollars to spare, please donate.



**Christmas Potluck:** party after the general meeting on Dec 13th. We will be providing a Christmas ham to go with the potluck. There will also be a White Elephant gift exchange. There is a sign-up sheet at the senior center. A \$5.00 per person charge to help cover the cost of the ham. Sign-Up ends Dec. 10<sup>th</sup>. So come and enjoy a fabulous Christmas potluck after the general membership meeting

**Dues & Application form:** As you know we will start collecting the 2026 dues on December 1<sup>st</sup>. A reminder on the dues a single person \$120.00 a year or \$60.00 for six months (paid twice a year), couples will be \$180.00 a year or \$90.00 for six months (paid twice a year).

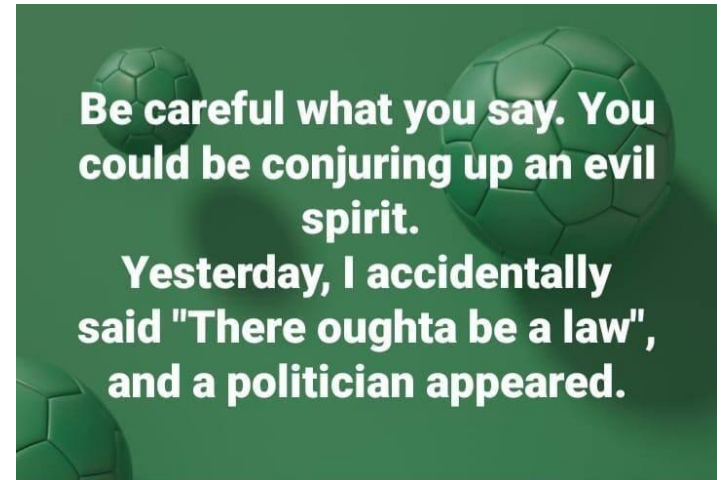
Now I need to talk about one of the big problems we have had collecting dues. Every year we have had to fill out a new application form for each member. This has often created a backlog of people at our front desk. Many of you know that we have had to let you go and have fun while we filled out a new application. Then we had to find you to get a signature. We are hoping our new process will bring this to an end.

We have redesigned our application form so we will not have to fill out a new application every year for each of our members. The only time we will need to fill out a new form is if your contact or emergency contact information changes.

I will be emailing the new form to those of you who have an email address. This will be a fillable PDF form. In other words, if you have Adobe Reader on your computer or tablet, you can type the information into the form and then print it out. If our members can help us with this, it will really speed up the processing of your renewal for the senior center.

The new application form will be emailed out the day after the December newsletter is sent out. If you have an email address on file with us, keep an eye out for

the new application form. Please remember if you are a couple, we need an application form for each of you. If you have any questions about this, you may contact Brad at the senior center or reply to the email with the form attached.



## Election Information

You will receive your ballot in the mail shortly after the newsletter. There is a return envelope to return your ballot to the senior center. **We must receive your ballot by December 10<sup>th</sup>.** If you have any questions, please contact the senior center. Write-in candidates are acceptable. Election results announced at the December 13<sup>th</sup> General Membership Meeting.

**Executive Committee** has two open positions for this election. These are two-year positions. We have the President and the Secretary positions open. We have two candidates running for President and one candidate running for Secretary.

**President: Betty Sledge** has been a member since the opening of the current center. She was a board member beginning in January of 2023. In August of 2023 Betty was appointed president upon resignation of the sitting president. She has held the office of president ever since being elected in Dec. of 2023. Betty holds two masters degrees and worked for Polk County Behavioral Health as a therapist for 37 years. The last nine years as the Older Adult Behavioral Health Specialist. She has business management experience as well as a background in fundraising. Betty enjoys fishing, traveling, and working with teens and young adults beginning her 48th year as a youth and young adult minister.

**President: Leland “Lee” Schlenker** I am a graduate of Oregon State University in the 60’s with a degree in Manufacturing Engineering. I was an engineer for over 30 years working in Southern California, and then the Reno Carson City area of Nevada. As the need for more math and science teachers was made known, I went back to college and became a science teacher for middle and high school. I then taught school for eight years in Reno Nevada. I have belonged to several different clubs in both the Reno and Dallas area. The first service club that I joined was in Reno. It was the Sertoma (service to mankind) where I served as Secretary, Treasurer, and President. I was a member of that club for over 15 years. Upon retiring from teaching, we moved to Polk County, and I have joined several different clubs here. The first was Polk Conty Master Gardeners, where I served as President two different times and on the board several more times. At about the same time I joined the Rotary Club of Dallas. I now serve as President of that club until July of 2025. The other group that I joined was the Polk County Sherriff Office SALT unit and was a member for ten years.



**Secretary: Nancy Howells** has had a varied career. She has worked as an administrative secretary, a legal assistant, retail sales, and held several other positions. She was married and had children. She now lives alone and has a small business of pet sitting. Nancy has a good understanding of record keeping, has computer skills, and excels in organizational tasks. She has been in Dallas for less than 7 years but has become involved in several organizations. She is interested in topics that concern older people and wants to promote keeping active and aging well.

**Board of Directors:** There are four open positions for this election. These are two years positions. Here are the five candidates for these positions.

**Nancy Bliven** is a life-long Dallas resident. She was a teacher at Dallas High School for over 30 years. Nancy has been involved in multiple organizations that promote Dallas over the years. Her husband, Mark, was a local attorney, and the municipal judge for decades until his retirement. Nancy has 4 children; one having passed from Covid. She continues to be involved in several organizations and is a strong advocate for Seniors and the City of Dallas.

**Lynette Horton** has been a resident of Dallas for just over 3 years and a member of the Senior Center since January 2023. Lynette and her husband David came from Salem for a quieter life. Has worked in Management, accounting and has experience with contracts for the past 50 years. She has served on several boards from neighborhood associations, school boards, and sports organizations. When not traveling, you can find Lynette helping at the Center and sitting in on Board Meetings, general meetings and potlucks. You can also catch Lynette playing Bunco every other Tuesday and handing out bingo cards on bingo night. Lynette has enjoyed the people that she has met, and the friendships made at the senior center. Lynette is here for the members of the Senior Center and will work for the members and board together.

**Judy Greening** moved to Dallas November 1<sup>st</sup>, 2022. I joined the Dallas Area Seniors center in January of 2023. I joined for the exercise class. After a few months I was asked to join the Out to Lunch Bunch for lunch. I have been going ever since. I realized I wasn't going to start meeting more people by leaving by the side door. So, I started going through the main room and visiting a bit. I was invited to play a card game being played. I had to learn this game, and I did learn it. I have learned many card games including Pinochle. I started spending more time at the center and have made many wonderful friends. I am running to be a board member to help keep open communications between the board and the membership. Also to keep the center thriving for generations to come.

**Calleen Harrison** is originally from Idaho Falls, Idaho. I am the 2nd oldest of 7 kids. Our Dad taught high school Biology and coached basketball. He found a teaching job in Corvallis, Oregon so the family moved to Oregon when I was ten. I went to school there and got some college at OSU where I met my first husband. He was accepted to a University in Ellensburg Washington where our daughter was born. We moved back to Corvallis. We divorced so I moved to the Portland area with my daughter. I worked at Oregon Health Sciences University campus at the Dental School for 7 years and I had other odd jobs such as waitressing and working in retail. I found a job with Kaiser Permanente in the Dental program and while working there I took a correspondence class in art and earned a liberal arts degree. I met my husband, Brad while working for Kaiser. He worked at Precision Cast Parts and when we both retired, we moved to Bend and bought a home in Redmond. I volunteered for Equine Outreach working with horses, which I really enjoyed. They had as many as 120 horses at one time. Some of them were Mustangs from the B.L.M reservation. We adopted two horses from there. After being in Central Oregon for 12 years my husband passed and I moved back to the Willamette Valley and moved in a house with two of my sisters and a niece to help care for our elderly Mother. She passed away 2 years ago, and I still live with my sisters and niece here in Dallas.

**Judy Reid** moved back to Dallas in 2000 when I retired from the sales office of Hewlett-Packard in Portland. I am married and have three children, six grandchildren and three great grandchildren. I was the president for the senior center in 2014, the secretary, and the treasurer after that. I feel like I would be a good candidate for the board.



# December 2025 - DALLAS AREA SENIORS CALENDAR OF ACTIVITIES

**HOURS: 10AM – 3PM MONDAY - FRIDAY**

SUNDAY	MONDAY	TUESDAY	WEDNESDAY	THURSDAY	FRIDAY	SATURDAY
	<b>1</b> 10AM Cards/Table Games 10AM 5 Crowns Game 12PM Duplicate Bridge 1PM Walking Group 4PM Karaoke	<b>2</b> 10AM Cards/Table Games 10:15AM Low Impact Exercise 11AM Scrabble 11:10AM Low Impact 1PM Healthy Soul	<b>3</b> 10AM 4 Handed Pinochle 10AM Card/Table Games 11AM Mah-Jongg 1PM Walking Group 1PM Ice Cream Social	<b>4</b> 10AM Card/Table Games 10:15AM Low Impact Exercise 11:10AM Low Impact Exercise 12PM Bridge	<b>5</b> 10AM Cards/Table Games 10AM 6 handed Pinochle 10AM Art Workshop 12PM Watch Clinic 1:30PM 10 Minute Writing	<b>6</b> <b>2PM Christmas Nativities</b>
<b>7</b>	<b>8</b> 10AM Cards/Table Games 10AM 5 Crowns Game 1PM Walking Group 3PM Movie Matinee	<b>9</b> 10AM Cards/Table Games 10:15AM Low Impact Exercise 11:10AM Low Impact Exercise 1PM Bunko	<b>10</b> 10AM 4 Handed Pinochle 10AM Card/Table Games 10AM Resource Navigation 11AM Mah-Jongg 1PM Walking Group	<b>11</b> 10AM Card/Table Games 10:15AM Low Impact Exercise 11:10AM Low Impact Exercise <b>11:30AM Lunch Bunch</b> 12PM Bridge	<b>12</b> 10AM Cards/Table Games 10AM 6 handed Pinochle 10AM Art Workshop 1:30PM 10 Minute Writing 5:00PM Bingo Dinner 6PM Bingo	<b>13</b> <b>8AM Board of Directors</b> <b>10AM DAS General Meeting &amp; Christmas Potluck</b>
<b>14</b>	<b>15</b> 10AM Cards/Table Games 10AM 5 Crowns Game 12PM Duplicate Bridge 1PM Walking Group 4PM Karaoke	<b>16</b> 10AM Cards/Table Games 10:15AM Low Impact Exercise 11AM Scrabble 11:10AM Low Impact Exercise 1PM Healthy Soul	<b>17</b> 10AM 4 Handed Pinochle 10AM Card/Table Games 11AM Mah-Jongg 1PM Walking Group 1PM Birthday Celebration	<b>18</b> 10AM Card/Table Games 10:15AM Low Impact Exercise 11:10AM Low Impact Exercise 12PM Bridge	<b>19</b> 10AM Cards/Table Games 10AM 6 handed Pinochle 10AM Art Workshop 1:30PM 10 Minute Writing	<b>20</b>
<b>21</b>	<b>22</b> 10AM Cards/Table Games 10AM 5 Crowns Game 1PM Walking Group	<b>23</b> 10AM Cards/Table Games 10:15AM Low Impact Exercise 11:10AM Low Impact Exercise 1PM Bunko <b>Deadline For Calendar and Newsletter</b>	<b>24</b> 10AM 4 Handed Pinochle 10AM Card/Table Games 10AM Resource Navigation 11AM Mah-Jongg 1PM Walking Group	<b>25</b> <b>Christmas Closed for Holiday</b>	<b>26</b> 10AM Cards/Table Games 10AM 6 handed Pinochle 10AM Art Workshop 1:30PM 10 Minute Writing <b>Bingo Cancelled</b>	<b>27</b>
<b>28</b>	<b>29</b> 10AM Cards/Table Games 10AM 5 Crowns Game 1PM Walking Group	<b>30</b> 10AM Cards/Table Games 10:15AM Low Impact Exercise 11:10AM Low Impact Exercise	<b>31</b> 10AM 4 Handed Pinochle 10AM Card/Table Games 11AM Mah-Jongg 1PM Walking Group			