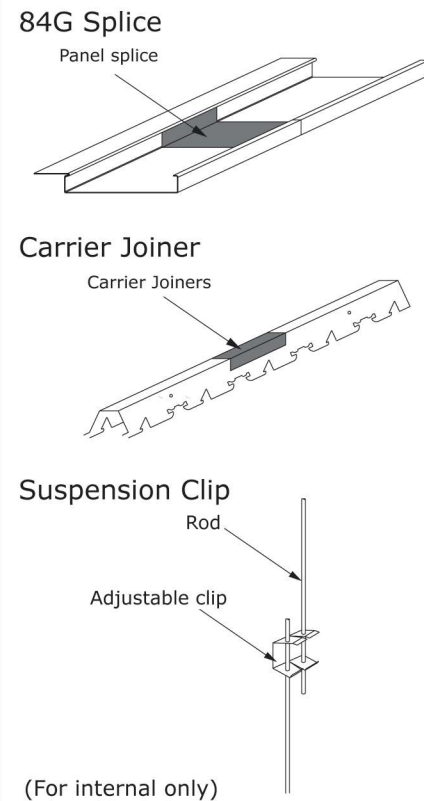




PANELLITE

STRIP CEILING



84G splice is made of either prepainted aluminium or galvanized steel to suit linear strip panels. It provides tight joints to ensure both joining strip panels do not separate and keeping the panels level around the joints.

Carrier joiner made of galvanized steel to suit the carrier. It connects both joining carriers with self tapping screws.

Suspension / adjustable clip for hanger rod is use to adjust ceiling level easily (Internal only).



- Aesthetics
- Dirt and stains can be easily cleaned
- Effective as outdoor ceilings
- Does not get moldy or sag
- Available in a wide range of colors
- Light weight and easy to handle and install
- Individual panels can be removed easily for access
- Panels can be custom cut to desired lengths
- Fast manufacturing time and delivery speed
- Concealing the carrier rail for neat and tidy appearance

Brief technical specification

PANELLITE Type 84G / 90G linear strip ceilings by Panellite Marketing Sdn Bhd. Strip panels are manufactured from **0.50mm thick prepainted aluminium / 0.35mm thick prepainted galvanized steel**. It is manufactured by using roll forming process to form the panels **width of 84mm, 12.5mm depth and 24mm flange** (Type 84G) or **12mm flange** (Type 90G) on one side.

When the strip panels are clipped onto the 84G carrier, the panels will form a 16mm recess (**Module 100**). However using the same panel to clipped onto the 90G carrier, the panels will only form 8mm recess (**Module 92**) based on the carrier design.

The carrier is made of **0.9mm thick aluminium or 0.5mm galvanized steel** like an inverted U channel. Panel grips are punched out from the carrier at equal space to provide the means for the strip panels to be clipped onto the carrier. The carriers are installed at a spacing of between **1000mm to 1200mm** for internal applications, and between **600mm to 1000mm** for outdoor applications.

Mineral wool pads can be laid on top of the ceiling panels for heat and fire insulation. For effective acoustical control, the strip panels can be perforated and bonded with a layer of black non-woven acoustic black tissue.

PANELLITE Archifectural Products

KUALA LUMPUR
Panellite Marketing Sdn Bhd (733583-P)
5, Jalan sungai Jeluh 32/189, Bukit Naga, Sekyen 32,
40460 Shah Alam, Selangor, Malaysia.
Tel: +603-51662531 / +603-51670931 Fax: + 603-51667857

BORNEO
Panellite Marketing (Borneo) Sdn Bhd (920462-U)
Lot No. 2,Block G, Sri Kemajuan Industrial Centre, Mile 6½, Jalan Tuaran,
88450 Kota Kinabalu, Sabah, Malaysia.
Tel: +6012-684 8698 Fax: +6088-428 246

* Technical data subject to change without prior notice.



**84G
90G**

STRIP CEILING

STRIP CEILINGS

TYPE 84G / 90G

PANELLITE

The PANELLITE Linear Strip Ceiling Type 84G and 90G are popular conceal ceiling systems used in many building internally as well as externally. The recessed joints provide the linear appearance that enhances the perspective of space. The available colors enable the designers to create a non monotonous ceiling.

COMPOSITION

Systems:

Strip panel, carrier, trimming angle and suspension clip ceiling system forming a module 100mm / module 92mm. Perforated panels optionally equipped with insulation material to meet thermal and acoustic specifications.

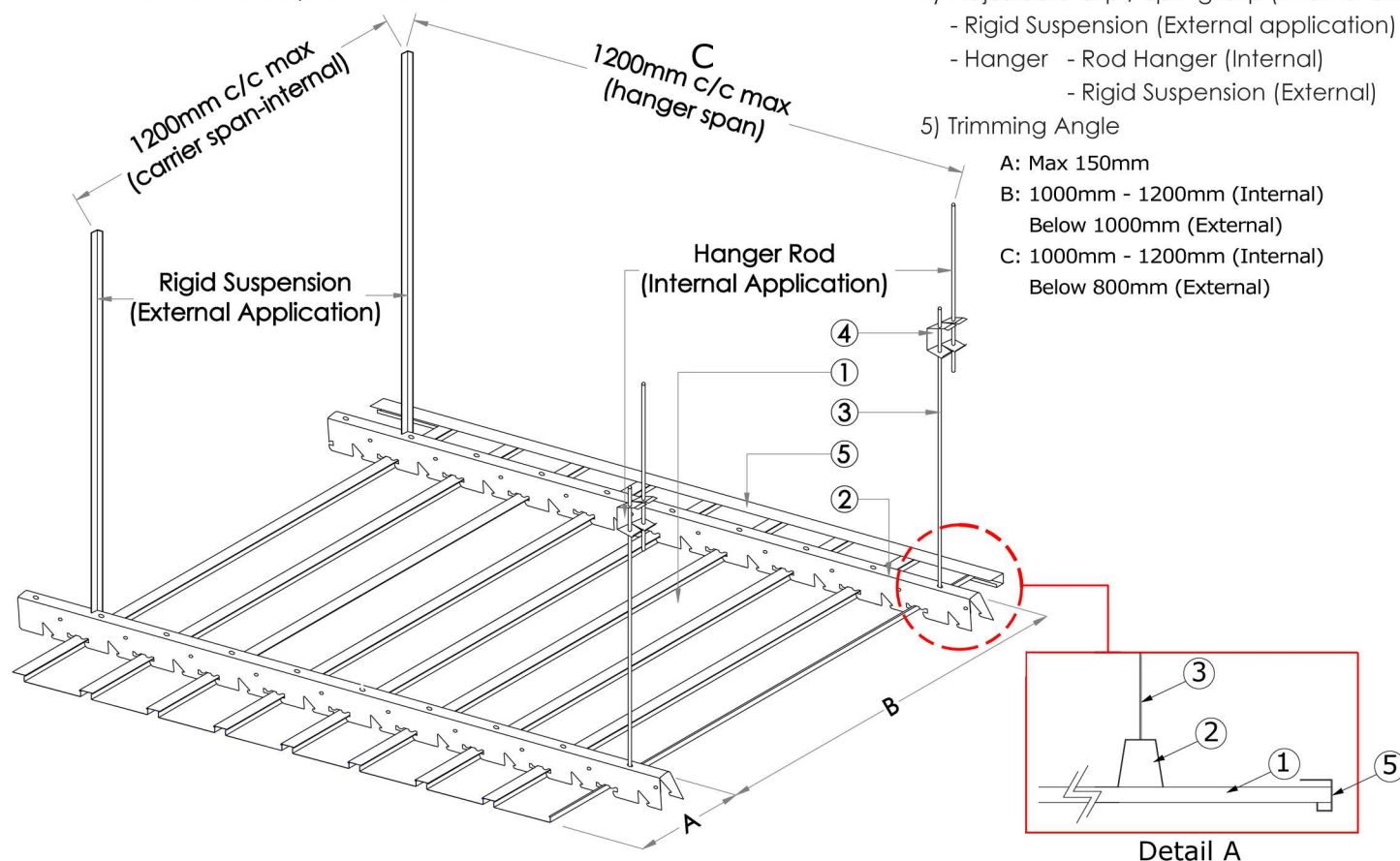
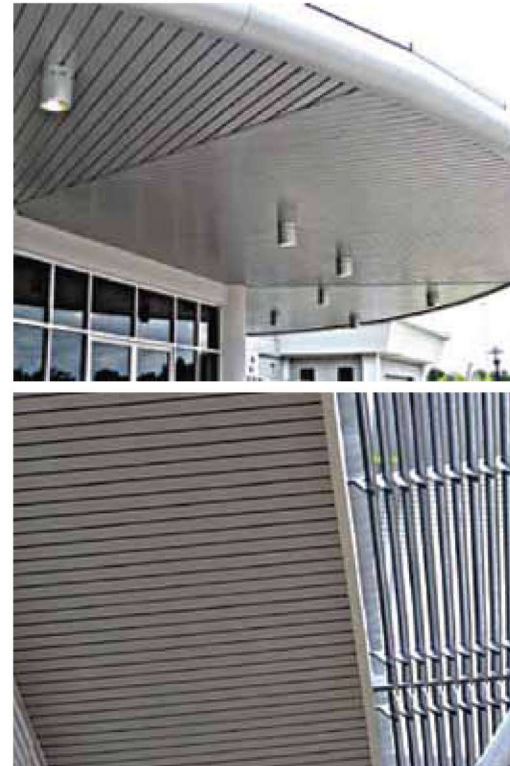
Material:

PANELLITE Type 84G panels are roll formed from:
a) 0.50mm thick prepainted stove aluminium or
b) 0.35mm thick prepainted hot dip galvanized steel.

Paint System / Coatings:

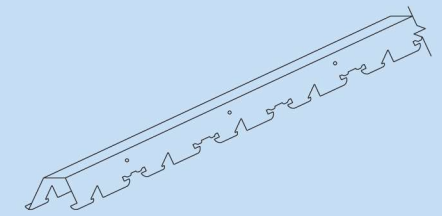
Polyester coating

Approximately 25 micron thick coating providing excellent surface protection and finish.

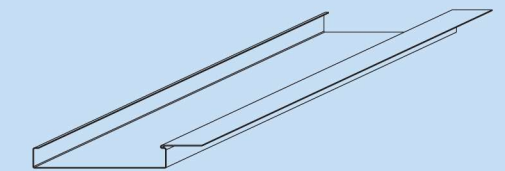


Material Specification

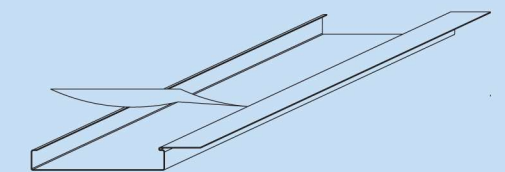
Type of Panels	84G	90G
PANELS		
Panel Width	84 mm	
Panel Depth	12.50 mm	
Panel Flange	24 mm	12 mm
Panel Thickness	- Galvanized Steel 0.35 mm - Aluminium 0.50 mm	
Max. Panel Length	6 meter	
Material	Prepainted aluminium or galvanized steel	
Color Range	Range of Standard Color <i>(please refer to color chart)</i>	
PANELS PERFORATED (OPTIONAL)		
Standard Perforation	Diameter of hole is 2.0 mm, diagonally with approximately opening area of 20%	
ACOUSTIC (OPTIONAL)		
Material	Black tissue or Soundtex non-woven tissue (NRC=0.7)	
CARRIER RAIL		
Section Width	30mm	
Section Depth	40mm	
Section Thickness	0.5 mm thick for galvanized steel 0.9 mm thick for aluminium	
Section Length	3000 mm (standard)	
Carrier Spacing	1000 - 1200 mm for internal 800 - 1000 mm for external	



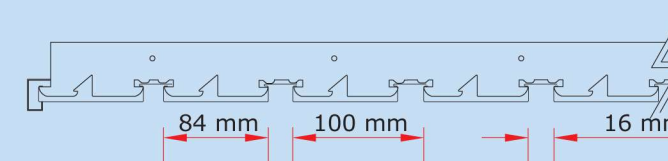
PANELLITE Carrier



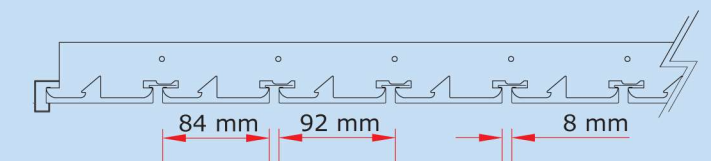
PANELLITE 84G panel



PANELLITE 84G perforated panel with black tissue



Type 84G (Module 100 mm)



Type 90G (Module 92 mm)

- Concealing the carrier rails
- Excellent for outdoor use with some wind loading
- Does not allow air circulation thus minimizing dust collection on panel surface