



## Mineral Exploration & Mining

### Doing it by the Book! Safely & Professionally

RPM Aerial Services (RPM) is a Canadian company located in Holyrood, Newfoundland & Labrador. We provide high density aerial data via LiDAR derived digital elevation modeling (DEM), and other professional aerial services. RPM utilizes unmanned and/or manned aviation equipment for data collection depending on project scope to minimize overall project costs and complete the work as efficiently as possible.

#### Our Capabilities:

- LiDAR
- Airborne Magnetic Surveys
- Environmental Monitoring
- Photogrammetry
- High Definition Aerial Inspections (Pictures, Video & Infrared)

#### Services we offer:

- Localized high-density topographic models
- High resolution scans for asset planning and monitoring
- As-built surveys (LiDAR and photo based)
- Mine site / stockpile volumetric and progress monitoring
- Tailings ponds & dam erosion monitoring
- High resolution airborne magnetic surveys
- Air quality monitoring and remote water sampling
- Wildlife monitoring utilizing high resolution thermal & powerful zoom cameras
- Aerial photos, orthomosaics and photogrammetry
- Infrared based Inspections and orthomosaics
- In class and in field RPAS (Remotely Piloted Aircraft Systems) training

Your sole source aerial data provider.



# Multiple Aerial Vehicle Options for Operation in Any Environment



Multi-Rotor Aircraft



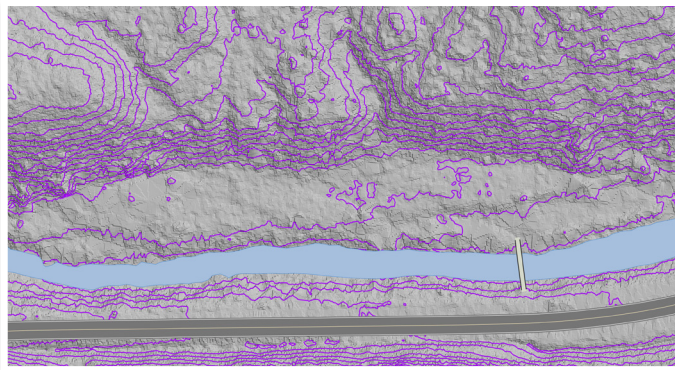
Manned Helicopter



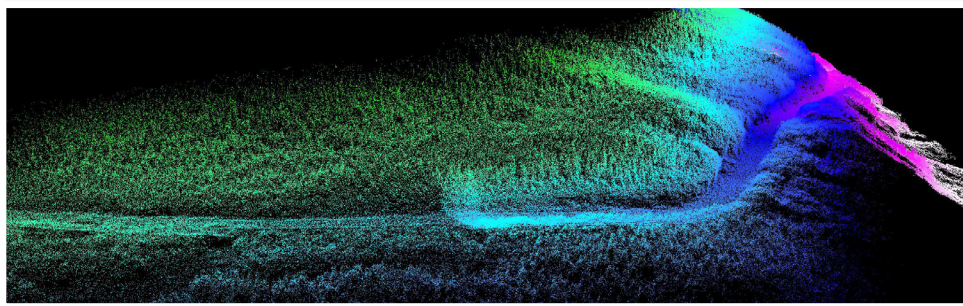
Unmanned Helicopter



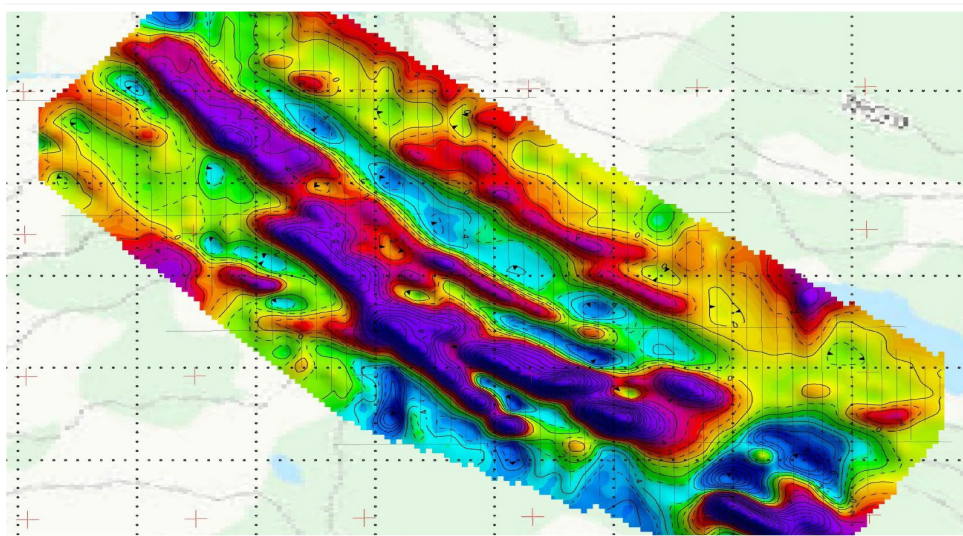
Orthomosaics are large, high quality images derived from combining multiple smaller aerial images known as Orthophotos.



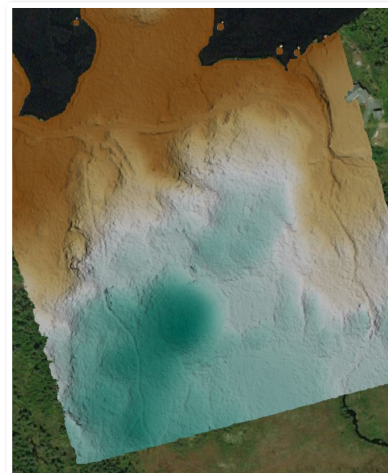
High resolution LiDAR derived models produce highly accurate topographic and bare earth elevation models even in heavily vegetated areas.



Low, medium, high & ultra high density LiDAR models.



Low altitude high resolution aerial magnetometer surveys.



3D representations of surfaces (DEM's) using hillshades.