

Municipalities

Doing it by the Book! Safely & Professionally

RPM Aerial Services (RPM) is a Canadian company located in Holyrood, Newfoundland and Labrador. We provide high density aerial data via LiDAR, Digital Elevation Mapping (DEM) techniques, and other professional aerial services. RPM utilizes unmanned and/or manned aviation equipment for data collection depending on project scope to minimize overall project costs and complete the work as efficiently as possible.

How are municipalities utilizing today's affordable LiDAR technology?

- Through the use of high-density topographic surveys of roads, land parcels and flood plains
- Through the creation of as-built/digital 3D models
- By creating high density topographic surveys for parks and trail planning, which includes flood plain trail/bridge planning as well as route planning (walking, hiking, biking, advanced skills, etc.); and
- By using snow volume modeling for rooftop load distribution, avalanche hazards, roads and snow drifts

How are RPM's high-resolution aerial cameras benefiting municipalities?

- Through the use of high resolution (200x zoom) visual asset inspections
- By capturing promotional videos and pictures with mitigated liability; and
- Through the creation of photo-based products including up to date orthomosaics (similar to google earth)

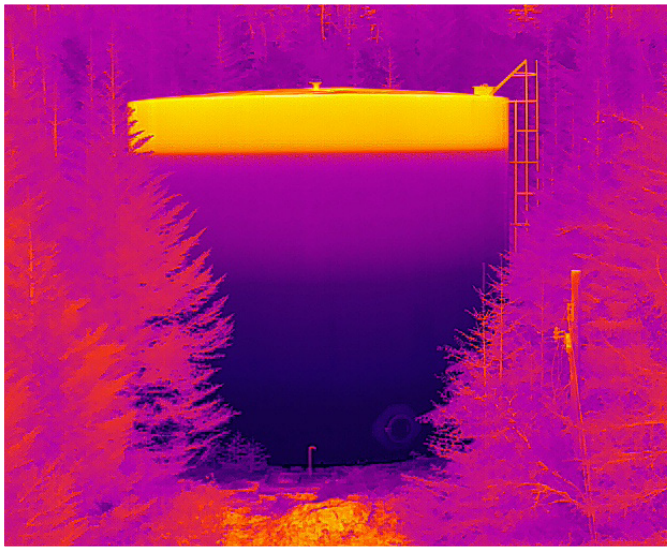
How are municipalities utilizing RPM's state of the art aerial infrared cameras?

- By conducting thermal inspections of infrastructure to monitor building efficiency, water main leaks and water tank (water/sediment) levels; and
- Through hotspot detection & mapping, as well as dead wood fire evaluations

How are municipalities benefiting from owning Remotely Piloted Aircraft Systems (RPAS)?

- After being professionally trained by RPM Aerial Services, municipalities have an invaluable tool to aid in:
 - Active fire fighting
 - Capturing promotional pictures and videos; and
 - Municipal enforcement

Your sole source aerial data provider.



Utilizing state of the art infrared cameras RPM Aerial can capture subtle temperature changes which can be used to detect water levels, sediment levels and in ground water leak detection

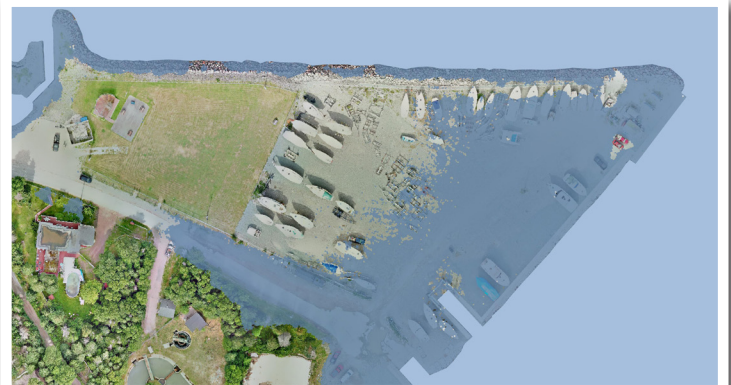
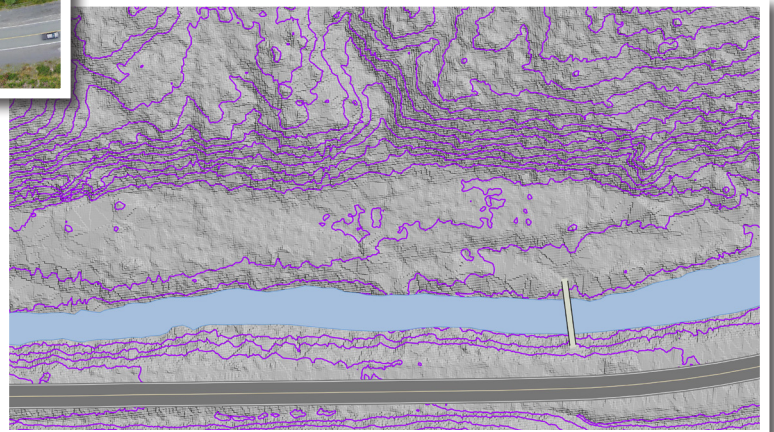


RPM's cutting edge 200 x zoom capability allows you to conduct asset inspection or municipal enforcement operations from a distance.



Orthomosaics are large, high quality images derived from combining multiple smaller aerial images known as Orthophotos.

LiDAR derived surveys provide highly accurate topographic models even in heavily vegetated areas.



LiDAR derived models can project flooding such as storm surge events.