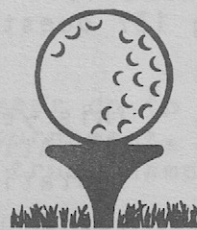


Published by the Greater Lansing Amateur Golf Association

# GOLF NEWS



GOLF: The Game of a Lifetime

VOLUME 3, NUMBER 2

AUGUST 1987

## FROM THE PRESIDENT:

Congratulations are in order for Tom Belen, 1987 Men's All City Medal Play Champion, as well as the GLAGA Tournament Committee, the staffs at Groesbeck and Royal Scot, and those who assisted in the compilation of scores and scoresheets on Saturday afternoon and evening.

Special mention needs to be made of the organizations and businesses who helped sponsor this event...without you this tournament would not be the success that it is. Thank you.

## Scoreboard Sponsors:

Coca Cola Bottling Co.  
Metropolitan Bottling Co.

## Hole Sponsors:

Adventure Golf/Saginaw-Sportsland.  
Airport Tavern.  
Michael J. Charlow/Century 21/Gaskin Realty.  
Chisholm Hills.  
Indian Hills.  
Innervisions Hair Salon.  
Keglite Lounge.  
Little General Auto Repair.  
McPhail Insurance.  
Michigan Financial Group.  
Mike's Pro Shop Trophies.  
Nip N' Sip.  
Rapid Print.  
Spirit, Etc.  
Troy Design, Inc.  
Vogue Cleaners.

## Junior Golf

The second year of our GLAGA Junior Golf Program was climaxed on July 21 by the Annual Golf Clinic conducted at Forest Akers West by PGA professional-Jim Gallagher Jr. Afterwards, Jim played golf with some of the Junior Golf participants. A tremendous thank you to the BOC Supervisors Council for their generous donation of \$2,500. to the program, Ken Horvath and the staff at Forest Akers for their assistance, TV-10 and Tim Staudt, and to those GLAGA members who donated their time and efforts: Jim Bass, John Clark, Jim Donahue, Jerry Gunthorpe, Steve Martin, and Tim Russell. (P.S. Thanks for the \$500. Jim. You will always be welcome.)

## It's Reniger Memorial Time

The invitations are printed. Perhaps the most significant tournament in the Lansing area will be on September 12-13 when the Memorial Tournament is inaugurated at Forest Akers West. Only seventy five golfers will be invited to play in this event.

Best golfing to all, Burton Smith.

All-City Medal Play Questionnaire Results and Comments:

After having 137 questionnaires returned to us, these are the results:

Question #1. - This year ends the three (3) year "trial" rotation for the All-City Medal Play Championship. Do you like the "rotation" of this tournament?

Yes - 95            No - 42

Question #2. - If the "rotation" were to cease, where would you like the tournament to be held?

Groesbeck - 37            Highland Hills - 12

Royal Scot - 36            Forest Akers - 68

\* Many of the questionnaires had more than one course checked.

Question #3. - Some thought has been given to moving the All-City Medal Play to August so as to spread out the tournaments now that the All-City Match Play has been resurrected. Would you like to see the tournament moved to August?

Yes - 79            No - 58

Question #4. - Problems have come up over the "favor" (bag tags, etc.), do you think getting a "favor" each year is a good idea?

Yes - 70            No - 67

Question #5. - Do you think that a "favor" is necessary for any tournament?

Yes - 65            No - 72

Question #6. - The past three (3) years we have distributed the prize money on a person basis (no. of people in each flight), Do you agree with this method?

Yes - 75            No - 62

CONTINUED ON LAST PAGE

## Mayfair Bar

LAKE LANSING RD.  
HASLETT, MI.

"A GREAT PLACE TO RELAX AFTER A ROUND OF GOLF WITH THE BEVERAGE OF YOUR CHOICE AND GOOD FOOD".

• BIG SCREEN T.V. • POOL • VIDEO GAMES •

"THE MAYFAIR SUPPORTS AMATEUR GOLF IN GREATER LANSING"

Complete Roofing Service  
Residential - Commercial - Industrial

# S

SPARTAN ROOFING COMPANY, INC.

SATISFACTION GUARANTEED

PAUL METZGER  
(517) 694-4300

6850 N. Aurelius Road  
Lansing, MI 48910



Question #15. - A suggestion has been made that the "Low 64" be automatically placed into the Match Play Tournament. Do you agree with this?

Yes - 48      No - 89

Question #16. - We are playing "winter rules" this year do to the lack of interest in helping to run the tournament. Do you feel that "winter rules" gives us a true champion?

Yes - 119      No - 18

Question #17. - See "Remarks"

Question #18. - This year, as in the past, we think that some players who do not meet the requirements to play in this tournament, will try to enter. Do you feel that we should toughen up the requirements to play in this championship?

Yes - 103      No - 34

Question #19. - Because some illegal players will enter and play, do you feel that we should check each player and require some type of proof when they submit thier entry?

Yes - 93      No - 44

Question #20. - In recent years we have gotten away from having both morning and afternoon tee times on Friday because it has been said that those playing a different course might have an advantage. Do you agree with this?

Yes - 96      No - 41

Question #21. - Do you think that pairings should be done by random draw for the first two days?

Yes - 70      No - 67

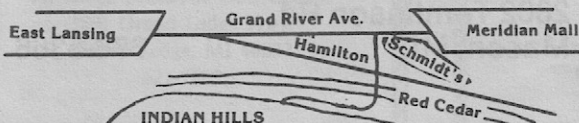
Question #22. - Do you think that pairings should be done by classifying players who are known to be the "better" players and then pairing these players by random draw, then pairing the rest of the field by random draw?

Yes - 92      No - 45

## Indian Hills Golf Course Okemos - Public

STUDENT AND SENIOR RATES  
COMPLETE CLUB REPAIR - CUSTOM CLUBS

4811 Nakoma      Okemos      349-1010



## Lansing Food Equipment Co.

SALES & SERVICE

3612 N. East St.  
Lansing, MI 48906

(517) 487-5085

1-800-336-3666

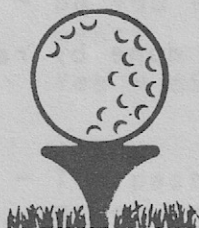
Question #23. - We have sold hole sponsorships for the last couple of years to help increase the prize list. Do you feel that this is necessary for a City Championship?

Yes - 126 No - 11

\*\*Questions #24. and #25. deal with interest in our association and do not pertain to the above questions and therefore are not included.

Question #17. - Remarks:

- Have 10 minute tee times all three days of the tournament.
- This was the first year that I played in the tournament and for me it was a great deal of fun. In addition, the people I played with made the rounds enjoyable.
- Pairings done by random draw. Penalties enforced for slow play. Eliminate prizes. Amateur events should never be driven by prize money.
- More water coolers on the course. Pop is nice, but cold water does a better job and it's cheaper.
- Why was the pump at Royal Scot broken? Was it because the course sold pop and beer so close to the pump?
- This tournament is for everyone, therefore, thought should be given to all types of players, not just the top players. By using more courses, you can spread the wealth around, plus you can get away from members playing on their own course each year. Also, in the 3rd flight there were 3 rounds in the 70's. The winner shooting a 74 on the last day! Please!!!!!!



Industrial Pollution Control  
Air & Industrial Liquids

**torit**  
Liquid Systems



**DENNIS KORKOSKE**  
Territory Manager

Donaldson Company, Inc.  
8137 W. Grand River, Suite 6  
Brighton, Michigan 48116  
(313) 227-3008

*HEAD FOR THE HILLS!*

## Mason Hills Golf Club

Banquets  
Outings



Driving Range  
Full Line Of  
Golf Equipment

PGA Professional  
on staff  
Video Golf Lessons

**MEMBERSHIP SPECIALS AVAILABLE**

2602 Tomlinson Rd.  
Mason, MI

676-5366



Remarks - cont.

I realize the 2 course concept has severe logistical problems, but it does allow for more people to play at better times and offers a variety from year to year. If numbers and logistics are a problem, perhaps a scratch tournament at one site and a flighted or handicap tournament at the other course would work - in other words, run separate but equal tournaments allowing persons to enter either one.

If this ever happened, the better golfers would see where their bread was buttered as I guarantee the flighted portion would have bigger numbers, bigger payoffs, and less problems and more fun.

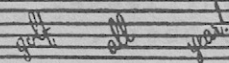
(In answer to questions 18 and 19) Although "illegal aliens" are not a problem to me - the easiest solution is not to check 270 entries, but simply a copy of a drivers licence or pay stub etc. to pick up any winnings, and advertise this fact in the application. This means a check of at most 80 people (you could even card only those winning more than \$30.00 for example).

- The verbal abuse that Burton Smith and Jim Donahue took from Mr. Jim Barkman - a player who missed his tee time was totally uncalled for. Both these individuals reacted in a manor that was a plus for your association. Mr. Barkman was late and gave these people such a four lettered blast for a mistake that he obviously made. This type of conduct has no place in any tournament and should not be allowed to happen in the future. He should not be allowed to enter in the future. We sure don't need his kind behavior in our tournaments. My wife and daughter were with me at the time and I was more than appalled at his conduct. Something should be done to insure that this doesn't happen again.
- Some concessions out on the course and Porta-potties such as Royal Scot had.
- I can't think of any major complaint, but I would like to know if there is another way of determining flights? As it stand now, its a roll of the dice for position, i stroke could be leading a flight or be 5 or 6 back in the next flight up.

## GOLFONICS

OPEN ALL YEAR!!!

2000



### "The Indoor Golf Course"

Play "Pebble Beach", "Spyglass Hills" or "Club DeBonmont"  
..All Inside!!! Using regulation clubs and balls.

Winter Leagues and Tournaments forming. *Open 8am - 10pm.*

At Ledge Meadows Golf Course  
1801 Grand Ledge Hwy.  
Grand Ledge, MI 48837  
627-7492

# Mobil

## Lake Lansing Rd.

OPEN  
7 DAYS

COMPLETE AUTO SERVICE  
USING UP TO DATE EQUIPMENT

SPECIALIZING IN:  
TUNE UPS • CARBURETOR REPAIR  
BRAKES • AIR CONDITIONING  
MUFFLERS • ELECTRICAL WORK  
WHEEL ALIGNMENT

484-2300

2704 LAKE LANSING ROAD (AT US-27)  
Rich Bratschi - Owner  
TOWING AND  
ROAD SERVICE



## Stabler's

Golf Prize Gift Certificates

Welcome!

- Munsingwear
- Arnold Palmer
- Sansabelt
- Haggar
- Jantzen

1908 - Stabler's - 1987  
Mens Wear  
4020 W. Saginaw

- Why was Groesbeck in such poor condition for such a great tournament? The fairways should have been mowed once during the 3 days of the event. The rough was ridiculous. Not only did it slow down play, but finding your ball and hitting out was impossible. Small greens and short par 4's with no club house is an insult to the tournament and to the G.L.A.G.A..
  - I strongly urge you to continue to keep the championship open to all skill levels. Also, why not allow women to compete?
  - Why don't they play hole no.4 at Groesbeck as a par 3 like they used to years ago. It would speed up play and make the course just that more like a championship layout that they are after.
  - (In answer to questions 6 and 7) I have participated in this tournament for the past 3 years, progressing from 3rd, to 2nd, to 1st flight. Although my goal is to improve to the championship flight, I realize I might not make it and that the strength of this tournament is the "average player". Three-fourths of the field will not make the top flight, therefore why should they enter if they do not have a chance of winning. The "scratch" golfer from the Lansing area has options of many individual tournaments around the state to enter. For the average golfer, this city tournament can be the biggest thrill of the golf season, help them to improve their game and nerves, and expose them to the proper rules and etiquette of golf. It has done that for myself and without fail everyone I have ever talked to in the lower flights (2nd and 3rd) seems to enjoy themselves. Most of the bitching seems to come from either the better players who want better times and faster play without the lousier golfers cluttering up the course, or those who have a dishonest perception of their golf abilities and blame anything except themselves. Please keep this tournament as a "true City Tournament" and promote more not less participation.
  - You can play this tournament anywhere except Highland Hills. It remains the most boring course I have ever played.
- I'd like to thank the entire G.L.A.G.A. staff, Clint Ovren, his staff and Don Ballard and his staff for their organization and excellent course maintainence.
- I don't believe that the policy of not moving the ball with the club head but allowing one to pick and place makes any sense. It just slows up play. It took 5 1/2 hours to play Groesbeck.



**HIGHLAND HILLS GOLF CLUB**  
SUPPORTS THE  
**GREATER LANSING AMATEUR GOLF ASSOCIATION**

450 E ALWARD ROAD  
DEWITT MICHIGAN 48820  
(517) 669-9873


Members of GLAGA may bring in their bag tags and get:

- \$2.00 OFF green fees for 18 holes
- \$1.00 OFF green fees for 9 holes
- \$1.50 OFF their half of golf cart for 18 holes
- \$ .75 OFF their half of golf cart for 9 holes

This Offer Good Twice A Year

\* Not valid during Leagues, Outings, Tournaments, or before Noon Saturday, Sunday, or Holidays

**Jack Boman**  
P.G.A. Golf Professional  
*The Players Club*



1-496 & Canel Rd. & St. Joe  
Lansing, Michigan

	N	
W	Four Winds	E
	Golf Course	
	S	

Park Lake Rd. and Temp I-69  
Hwy. East Lansing, MI  
339-1500



- Somehow slow play has to be penalized. We were the 2nd group out at Groesbeck on Friday and at Royal Scot on Saturday. We took only 3 hours and 35 minutes on Friday and 3 hours and 30 minutes on Saturday to play. If that can be done then it should be within reach for everyone to play in 4 hours and 15 to 30 minutes at the most for the rest of the field.

A maximum number of participants should be decided on by the organization(s) sponsoring. For instance let us say that a maximum of 220 players were to be selected. Invite back the low 150 from the previous year. Grant 20 exemptions based on the previous tournaments, high school or college competition, etc.. About two weeks prior to the tournament, hold an 18 hole qualifying round for all those who want to enter. Fill the remaining 50 spots and vacancies from this tournament. If possible the qualifying tournament should just cost green's fees and a couple of dollars to run it.

After reviewing the remarks that were made on the questionnaires and about the questionnaires, Jim Donahue and Harold Singleton the tournament co-chairmen had these answers to the "remarks":

After looking at the questionnaire results and at the remarks it seems pretty obvious that :

1. The people playing the All-City like the rotation of the tournament.
2. Highland Hills is the least liked of the four courses used and before the tournament is scheduled to be played there again, it must be reviewed and the desires of the players listened to.
3. Some serious thought be given to moving the date of the All-City Medal Play to August. This must be looked at seriously by the board and a decision be made shortly as to the exact dates for the 1988 tournament.
4. That bag tags are not of any major concern to the players and are at most just a nice but not necessary touch.
5. People like the way we distribute the prizes and it should be left as is.
6. That the field should not be limited in number and encouraged to grow. It is afterall the All City.
7. Winter rules are an accepted format in playing this tournament.

A MEMBER OF THE SEARS FINANCIAL NETWORK

**COLDWELL  
BANKER**

HACKER CO.

280 E. SAGINAW  
EAST LANSING, MI 48823  
BUS (517) 332-2949  
RES (517) 349-1141  
MOBILE 881-0578



**JAMES J. KOST**  
REALTOR-ASSOCIATE\*

Life Member President's Million Dollar Club

An Independently Owned and Operated Member of Coldwell Banker Residential Affiliates, Inc.

## CHISHOLM HILLS C.C.

18 HOLE GOLF COURSE  
MODERN CLUB HOUSE

BANQUETS • DINNERS • WEDDING RECEPTIONS BY  
RESERVATION • BEER • WINE • LIQUOR  
PRO SHOP GOLF EQUIPMENT  
RESERVED TEE TIMES AVAILABLE:  
MONDAY - FRIDAY 4:00 P.M. - 7:15 P.M.  
WEEKENDS AND HOLIDAYS FROM 7:00 A.M. - 5:00 P.M.

**DON CLARK - PGA PROFESSIONAL**

PRIVATE AND GROUP INSTRUCTION

**DON & JOANNE CLARK - OWNERS**  
2397 WASHINGTON RD. LANSING  
AT CITY LIMITS

(WILLOUGHBY ROAD)

**694-0169**

8. We must tighten up the rules concerning residency and just who can and will be allowed to play in this tournament.
9. We must use the 10 minute tee times and penalize people for slow play.
10. No Preferred tee times for any reason and pairings be done by classifying players as best we can then pairing them by random draw.
11. We should continue to sell hole sponsorships.

As for the remarks, well I feel that some of these should be addressed. So here are my replies:

1. As to the pump at Royal Scot being broken - I doubt that it was on purpose, but we will take steps to make sure that something like that doesn't happen again.
2. A remark was made about spreading the wealth around. Every course except Forest Akers claims it loses money when it holds this tournament. The low scores in the higher flights will have to be looked in to. One solution might be to limit the number of strokes you can improve before you are moved up a flight, or by making the winner move up a flight the next year.

**STRANG'S TAX SERVICE**

482-1772

424 ADAMS STREET

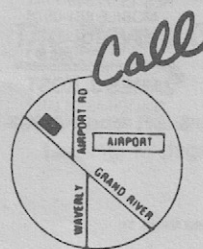
LANSING, MI 48906

**Royal Scot**  
**GOLF and BOWL**



- 18 CHAMPIONSHIP HOLES
- DRIVING RANGE

Redeem this coupon  
for Free Bag Tag



**321-6220**

FOR TEE TIMES

4722 W. GD RIVER  
1 MI. W. OF AIRPORT



**FOOD & SPIRITS**

**DeMarcos**

**A LANSING TRADITION**

484-3810

485-7234

600 S. PENN. AVE., LANSING, MI



3. As to showing those players in the Championship Flight where their bread is buttered, well isolating them is not the answer. You must remember that the prize list is based on a per person amount, therefore whatever the number in the flight, thats what is paid. I agree with some of the things your saying, but not how you want to correct them. I feel that what should and must be understood is the name "ALL-CITY". It should be just that, a tournament for ALL the City. If the majority of the players can understand this, then the problem will eliminate itself.
4. The remark about the poor shape of Groesbeck was not a viable one. Improvements needed to be made amd were. If there is any blame for the condition of the course, it lies with our association for not going to another course because of the construction. We knew about the improvements and held it there anyway. As I said - the blame lies with us - not Groesbeck.
5. The illegal players are a problem. But I'm not sure the "easy" way is the right way! I think that we must first clarify just what a resident is, then we can better enforce the rule. But we must consider that this tournament is for Lansing area people and therefore we must protect these people from players who come to Lansing, take a spot that they have no right to, artifically increase the size of the field and try to take prizes that they have no right to. This is what our association is all about. To better golf for the people in the Lansing area.
6. As for Mr. Barkman, well, I tried to understand his irritation at being disqualified for being late, but his actions, threats and language were out of place and are being looked into, not only by our association, but by the City of Lansing as well. We are not saints by any stretch of the imagination, and in my time I have seen all types of temper, but Mr. Barkman got more than just a little carried away. I have made my recomendations to the board and they have acted upon them. The results will be made known to Mr. Barkman in the near future.
7. The reason we went to the lift-clean-place method was to give some form of normalicy to this problem. The U.S.G.A., while not condoning "winter rules" non-the-less has some guide lines in the rule book for "preferred lies" and that is basically what we used. If you will read the remarks again, you will see where some groups played in around 3 hours and 30 minutes and they picked-cleaned and placed. The time problem lies elsewhere and we are looking to 10 minute tee times for all rounds as the answer.



## OAK LANE Golf Course

18 Holes  
Watered Fairways  
Snack Bar  
**521-3900**  
3/4 miles north of  
Light in Webberville

CUSTOM FIT GOLF CLUBS  
ALTERATIONS AND REPAIRS

**THE CLUB  
HOUSE**

JERRY STASCH  
(517) 372-9411

524 BARTLETT, LANSING, MI 48915

BURTON SMITH RESURRECTS

WOMEN'S ALL CITY

True to his word, Burton Smith resurrected the Women's All City Medal Tournament. The one day event was held at Royal Scot golf course and drew a field of 24. Word is that the last tournament was held at least 6 years ago. The date of this year's event will be easy to remember however, because Kelly Holland not only won the tourney but shot a course record in doing so. Kelly carded a 33-34--67 to win by 7 shots over MSU teammate Faith Egli. Low high school player was Mason's Carolyn Nodus with a 76. Course length was set at 5,522 yards, with the women teeing off in most cases from the front of the men's white tees. Burton says he tucked the pins including dastardly putting #8s in the back right, where its never been for the Men's All City. Congratulations to all for making the event a success.

SCORES:

67-33,34	Kelly Holland
74-38,36	Faith Egli
76-38,38	Carolyn Nodus
79-38,41	Bonnie Powell
80-41,39	Sheila Kiefer
81-41,40	Shelley Savage
82-40,42	Peg Bearden
86-43,43	Kathe Cassidy
88-44,44	Krissa Kropschot
91-47,44	Leslie Schroeder
91-50,41	Pat Snow
93-47,46	Sue Molitor
94-46,48	Joan Hosey
94-46,48	Jean Lindboe
94-47,47	Wyvonne Brown
94-46,48	Ellen Cassidy
96-46,50	Deb Wheaton
98-52,46	Stacie Harriger
98-48,50	Janice Masters
100-52,48	Kim Gower
102-50,52	Christine Peacock
107-55,52	Melanie Dennis
119-58,61	Diane Jankovic
DNS	Traci Burgess

CHUCK POHL REACHES THE FINALS IN THE NATIONAL "LONG DRIVE CONTEST"

Lansing's Chuck Pohl won the regional "Long Drive Contest" at Toledo's Heather Downs C.C. with a drive of 309 yards. He and Long John Lathan of Farmington Hills (304 yards) head south to the Pensacola Open in October for the Finals. Chuck and John are two of 30 "big sticks" who are in the finals.

GOOD LUCK CHUCK!!!!!!!!!!!!!!



**The Knight Cap**



**The Knight Cap Too**

**LANSING'S**  
**FINEST**  
**STEAKHOUSE**

484-7676  
Dinner  
Mon-Thur Til 12pm  
Fri-Sat Til 1am

**Downtown Lansing**  
320 E. Michigan

**EXCELLENT FOOD SERVICE & PRICES**

Dinner  
Mon-Thur Til 11pm  
Fri-Sat Til 12pm

339-9256  
in **HASLETT**  
Corner Marsh & Lake Lansing

**KILDEA  
AR  
ARE, INC.**

**EAST LANSING AND LANSING, MICHIGAN**

MICK KILDEA  
(517) 337-9320  
2649 E. GRAND RIVER  
EAST LANSING

TERRY KILDEA  
(517) 394-4700  
1011 SOUTH LAND  
LANSING

IF IT'S DONE TO  
AN AUTOMOBILE,  
WE DO IT



Question #7. - If "no" on #6, do you think that the prize money should be based on the Championship Flight getting a bigger percentage than the 1st Flight, the 1st Flight getting a bigger percentage than the 2nd Flight, and the 2nd Flight getting a bigger percentage than the 3rd Flight?

Yes - 23      No - 29

Question #8. - We have used five (5) courses in the rotation to this point. Some criticism of a couple of courses has been expressed. What courses do you feel should be left in in the rotation?

Groesbeck - 78      Highland Hills - 18      Royal Scot - 53  
Forest Akers East - 57      Forest Akers West - 108

Question #9. - Suggestions have been made that we hold this tournament "only" at Groesbeck G.C. or at Forest Akers G.C. on an every other year basis. Do you feel that the All-City should be limited to only these two sites?

Yes - 68      No - 69

Question #10. - If yes, which two sites?

Groesbeck - Forest Akers - 42  
Groesbeck - Highland Hills - 0  
Groesbeck - Royal Scot - 21  
Forest Akers - Highland Hills - 2  
Forest Akers - Royal Scot - 37  
Royal Scot - Highland Hills - 0

Question #11. - Suggestions have been made that we go back to the limited field of 200 players and hold the tournament at just one course. Do you feel that we should go back to the one course concept?

Yes - 3      No - 123

Question #12. - If we were to go back to the one course concept - which course should we use?

Highland Hills - 10      Royal Scot - 27  
Forest Akers - 67      Groesbeck - 39

Question #13. - It has been suggested that we play the All-City Championship only at Forest Akers. Would you like to see this tournament played only at Forest Akers?

Yes - 87      No - 50

Question #14. - It has been suggested that we play this tournament only at Groesbeck G.C.. Would you like to see this tournament played only at Groesbeck G.C.?

Yes - 63      No - 74

CONTINUED ON 3RD PAGE

# RAPID PRINT

QUALITY LITHO PRINTED . . .



FLYERS  
BULLETINS  
LETTERHEAD  
OFFICE FORMS  
also  
CARBONLESS  
FORMS AND  
ENVELOPES  
XEROX COPIES  
TYPE & LAYOUT

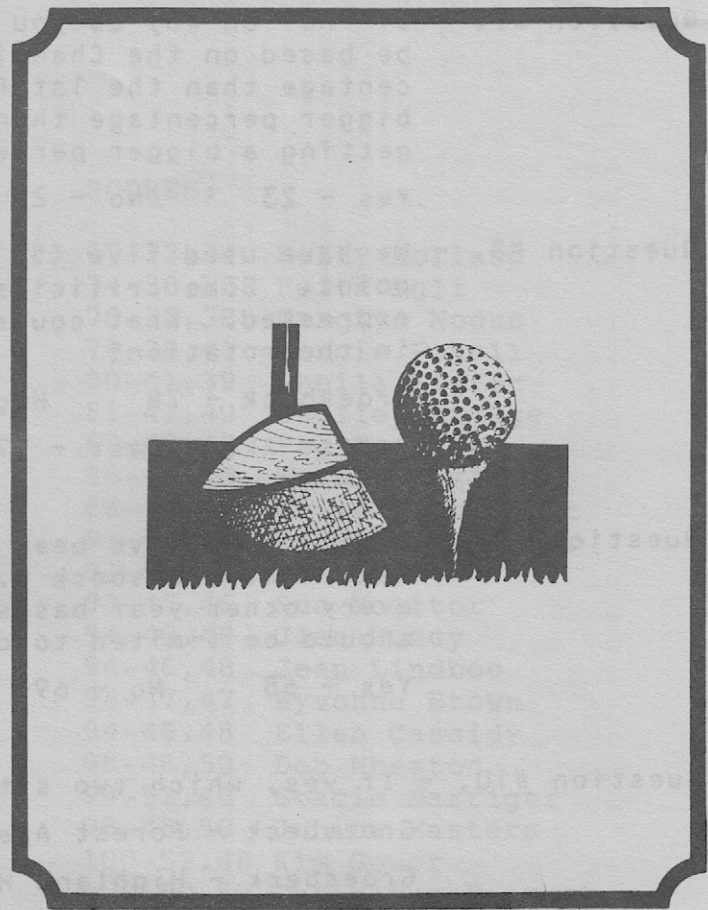
**FAST  
PRINTINGS**  
FROM YOUR  
CAMERA READY  
ORIGINAL

PICK UP & DELIVERY  
AVAILABLE

CONVENIENT PARKING

**484-5391**

1452 E. Michigan · 2 blks.  
E. of Sparrow Hospital



**GREATER LANSING AMATEUR  
GOLF ASSOCIATION  
P.O. BOX 25091  
LANSING, MI 48909**

**BULK RATE  
U.S. POSTAGE  
PAID  
LANSING, MI  
PERMIT# 730**