

SUBSEA CONTROL SYSTEMS

DESIGN – FABRICATION – INSTALLATIONS – MAINTENANCE

WELDED TUBING SYSTEMS



HYDRAULIC POWER UNITS & TUTA



CHEMICAL INJECTION



Topside I&E installs

24/7 service
Maintenance

ADVANCED INTEGRATED SERVICES offers experience and competency in subsea welded tubing installations, our team has decades of subsea design and installation experience.

We can help with identification of materials and connections to ensure a correct execution within a small schedule window.

Allow our team to do a front end review to ensure all processes work together to meet client needs and identify any gray areas that ultimately protect commercial interest.

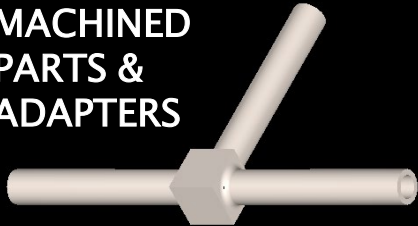


- Material take off
- BOM reviews
- Identification of tubing, fittings & connections
- Providing solutions to adapt mismatched connections or materials while not hindering system integrity
- Long lead identification
- Problem solving
- Project & welding procedures review
- FAT testing, continuity, hydro, coordination of 3rd party services such as flushing or NDE etc..

We offer a range of capabilities and solutions:

- Small bore tubing system design and installations
- Automatic autogenous orbital welding
- Autoclave with antivibration
- Sourcing of machined parts
- Adaptation solutions
- Established relationships with 3rd party resources

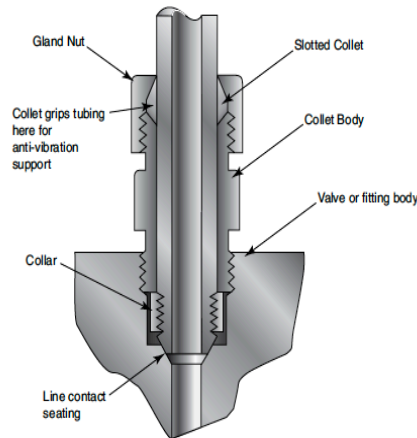
MACHINED PARTS & ADAPTERS



TUBE TO PIPE INTEGRATION SOLUTIONS

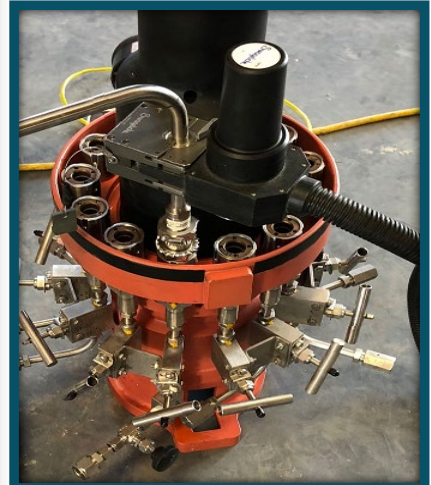


AUTOCLAVE ANTIVIBRATION



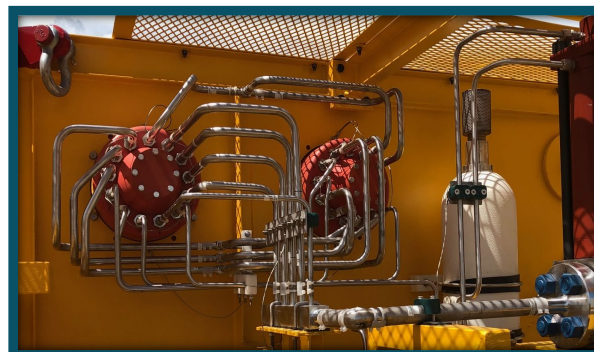
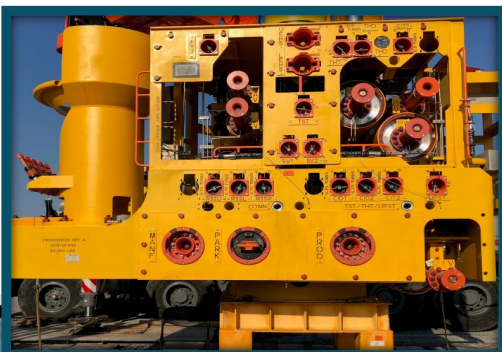
Series KCBGLX

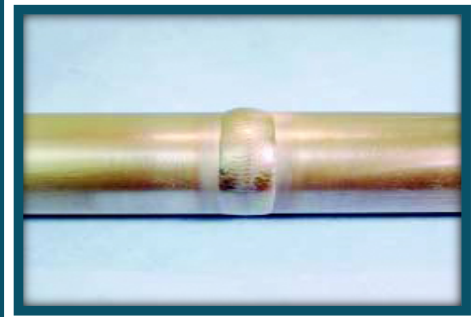
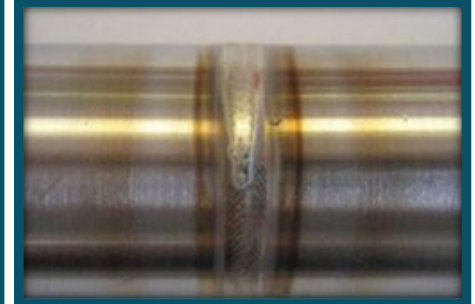
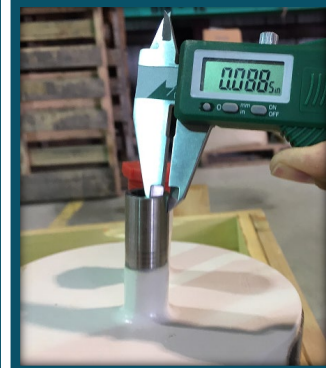
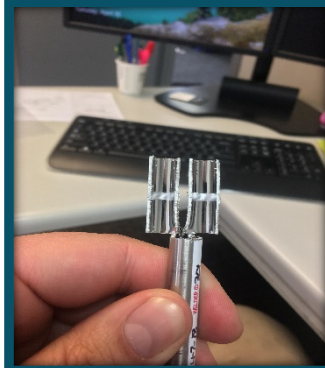
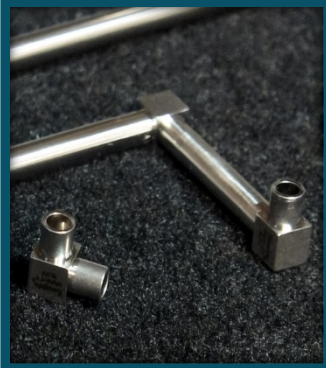
Pressures to 20,000 (1379 bar)



We offer experience in multiple subsea applications

- Jumpers
- PLEMS – PLETS
- Trees
- Manifolds
- GLIS





Our added value

- ▶ Designed for your unique business needs and operating conditions
- ▶ Experienced in-house design teams specialized in creating robust subsea control systems with added value for your operations
- ▶ 24/7 service and after-sales support

QUALITY ASSURANCE TEST COUPON CREATION



CONTACT OUR TEAM:

OFFICE: 337.857.5335

RJUMONVILLE@AIS-TEAM.COM

WWW.AIS-TEAM.COM

111 JERSEY DRIVE, YOUNGVILLE LA 70592