



TAHITI & THE ISLANDS OF

# *French Polynesia 2022*

**All year round | On board the 25-cabin/49-passenger  
M/S PANORAMA II**





# Tahiti

& THE ISLANDS OF FRENCH POLYNESIA

7-night cruise: Tahiti and the Pearls of  
French Polynesia | Tahiti – Tahiti



10-night cruises: the Society and Tuamotu  
Islands | Tahiti – Tahiti





## The Panorama II

- **Launched** 2004
- **Renovated** 2015
- **Length** 50 m
- **Width** 11,5 m
- **Draft** 4,50 m
- **Speed** 10 knots
- **Flag** Greek
- **Crew** 16-18
- **Passengers** 49
- **Cabins** 25 outside





## *The Panorama II*

Imagine a place far from home that feels just like home, where the borders are delineated by the golden shores of the sea; and home is wherever the anchors drop. Imagine 164 feet of comfort, sleek beauty, and safety classified by the latest International “Safety of Life at Sea” (SOLAS) standards. Imagine your floating home on board the sleek, classic design Motor Sailer as she spreads her white sails through the seas under the name PANORAMA II, waving her Greek flag through the wind. Panorama II loves to seduce her select 49 guests with her classic lines and wood paneled lounges redefining what yachting was meant to be.

A spacious lounge with ample space, dining areas decorated with warm colors, rich library and two decks for sunbathing, shaded areas and outdoor bar and loungers are just some of the elements that define her essence. Mingle with likeminded travelers in our public areas, enjoy a moment to yourself in our ample deck space, or retreat to one of our 25 ocean view cabin-sanctuaries all offering windows or portholes connecting you with mother nature’s wonders. Panorama II’s experienced crew of 18 is trained with hospitality at heart to pamper her guests and guarantee the ultimate home away from home experience.



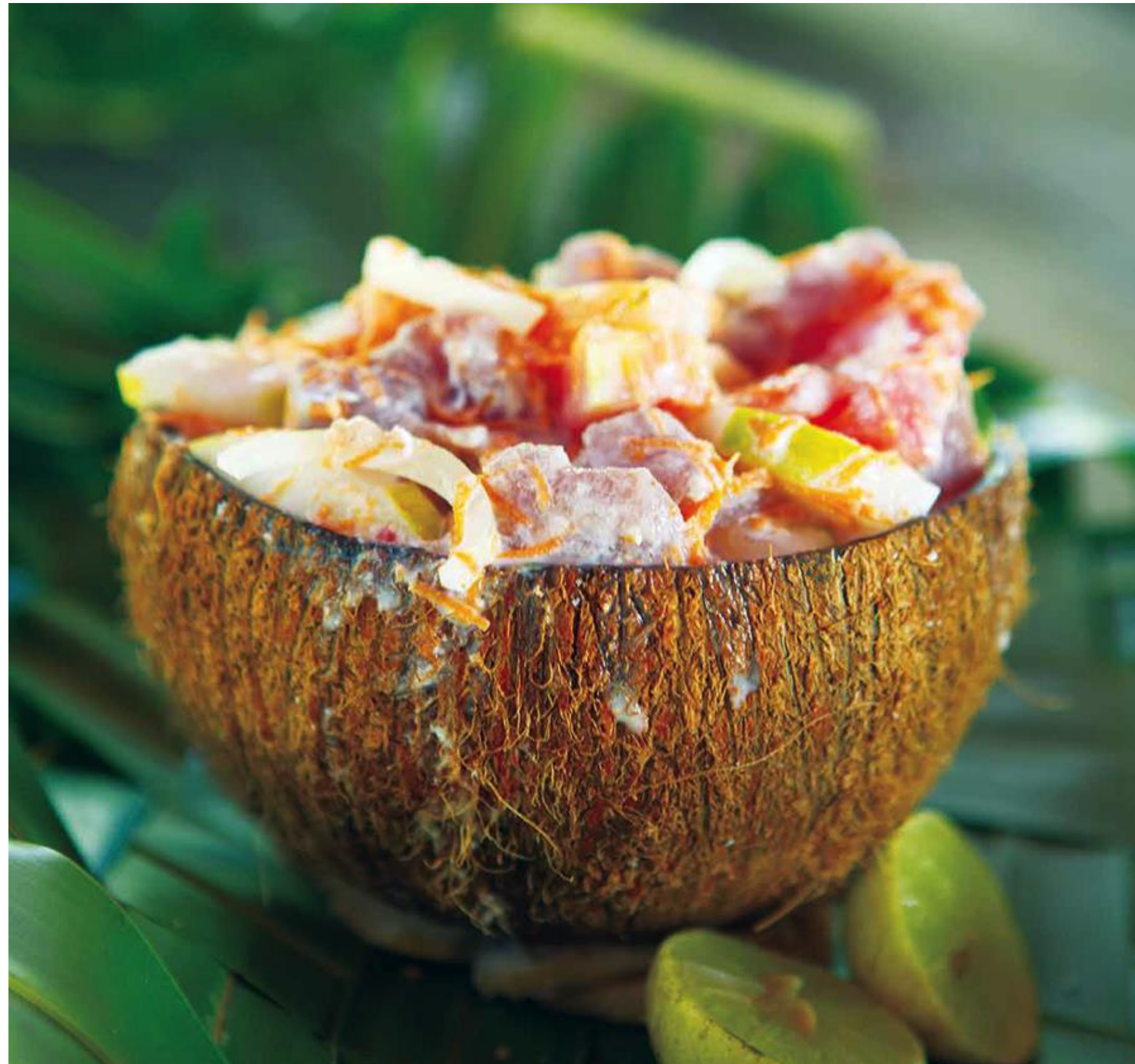
# Your home at sea

OUR SOFT WHISPERER





# Gastronomy







# *Welcome*

to the islands of Tahiti  
YACHTING IN FRENCH POLYNESIA  
ALL YEAR ROUND 2022 – 2023

The Journey Begins...

**Tahiti and the Society Islands Cruise – 7 nights**

***Tahiti, Society & the Tuamotu Islands Cruise – 10-nights***



# Day By Day

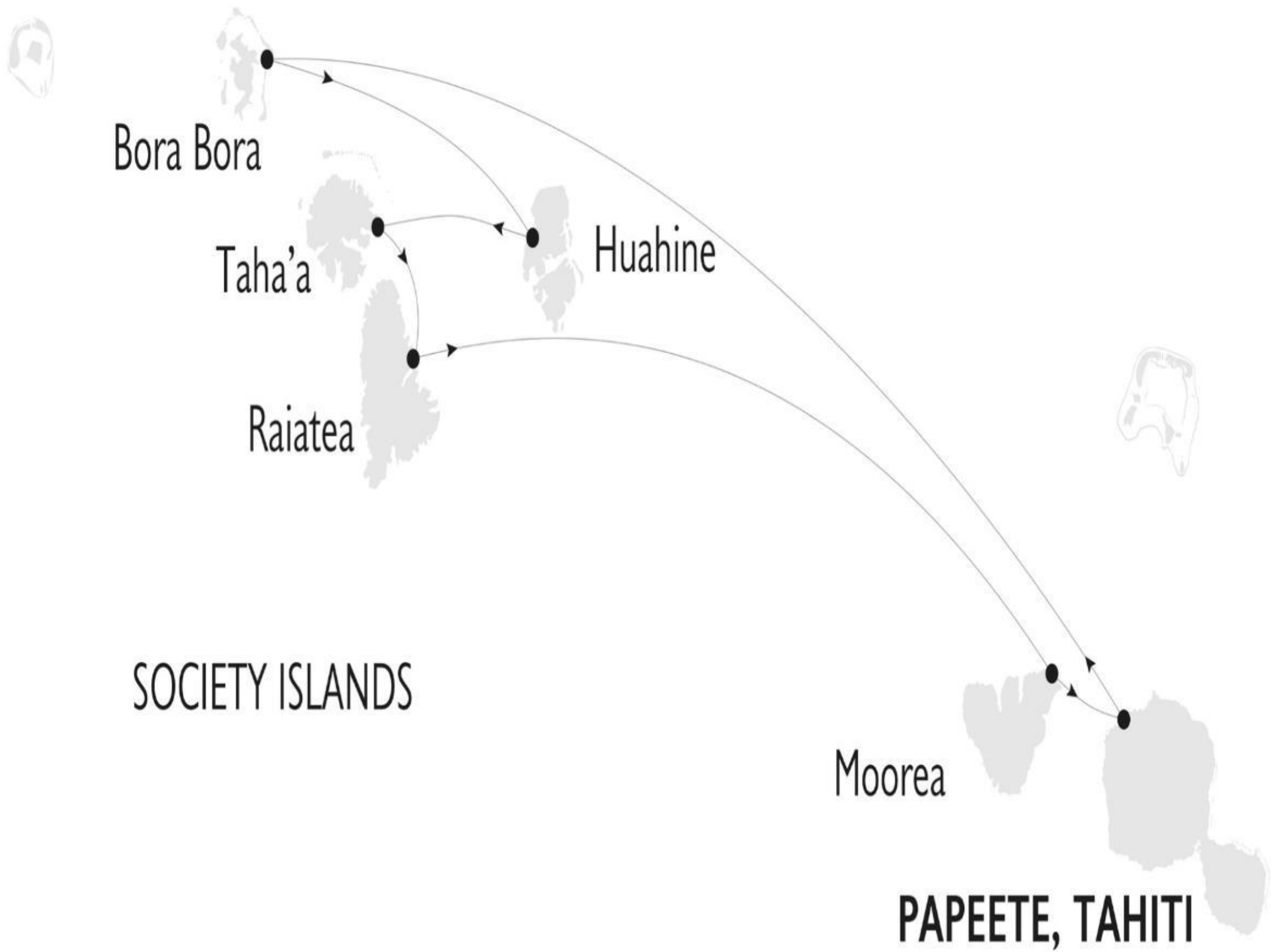
YOUR CRUISE

- Day one      ⚓ Tahiti - Papeete port
- Day two      ⚓ Bora Bora
- Day three    ⚓ Bora Bora - Huahine
- Day four     ⚓ Huahine
- Day five     ⚓ Huahine – Taha'a
- Day six      ⚓ Raiatea
- Day seven    ⚓ Moorea
- Day eight    ⚓ Tahiti – Papeete port

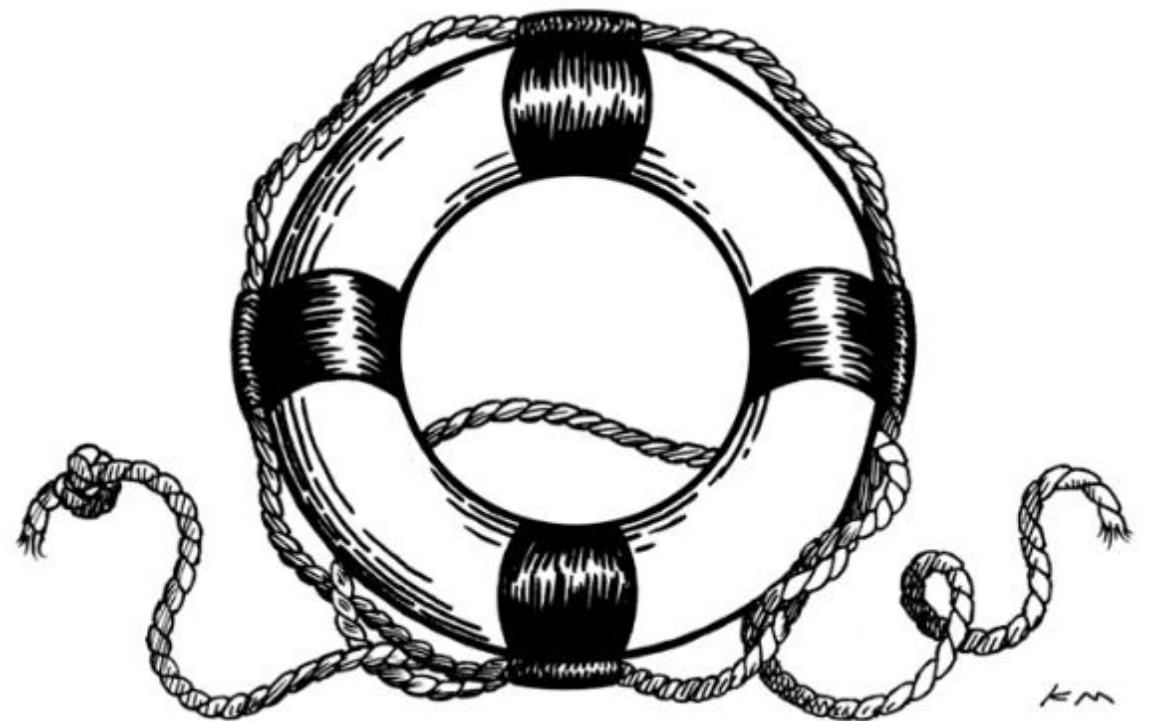




# Map



7night program Tahiti- Tahiti | FRIDAYS







# Tahiti

DAY ONE | PORT OF PAPEETE

Embarkation Papeete Port between 2.30 and 4 pm.  
Port is easily accessible from the Papeete airport  
and Tahiti hotels. (max 30 min transfers)

Welcome Cocktail, safety drill and Welcome Dinner.  
Sailing at 5.30 pm. Overnight at sea.



# Bora Bora



## DAY TWO

Early morning arrival in Bora Bora possibly the most photographed place on earth and one dreams to visit once in their lifetime. Our ship sails into Bora Bora lagoon with Mount Tamau standing tall in the center.

We will be spending 2 days in this paradise and choose from **a variety of optional activities** such as a/ Bora Bora Cultural Tour by 4x4, b/ Snorkeling with Stingrays and Sharks excursion, c/ the Bora Bora tour by "le Truck" and more. Overnight at anchor.





# Bora Bora Huahine

DAY THREE

We continue our **optional Bora Bora activities and excursions**. After lunch, we cruise the Bora Bora lagoon and sail to Huahine. We reach Huahine late in the evening. Overnight at anchor inside the lagoon.





# Huahine

DAY FOUR

Morning sailing to Huahine. Huahine, once home to Tahitian royalty, is considered the cradle of Polynesian culture. The two islands maintain the largest concentration of ancient marae (temples) in French Polynesia, some of which are believed to date back to around 700 AD. Huahine is a colossal tropical jungle burgeoning with coconut plantations, vanilla orchids, banana groves, breadfruit trees and watermelon fields. Our **optional half-day tour** takes us by 4x4 vehicle around the island to visit the small villages of Fare and Maeva, an archaeological site, and a vanilla plantation. There will also be an opportunity to see and feed the sacred blue-eyed eels of Faie Bay. Evening sailing to Makatea. Overnight at sea.





# Taha'a

## DAY FIVE

We leave Huahine early in the morning and sail to nearby Taha'a which shares a magnificent lagoon with Raiatea. Morning arrival into Taha'a, a true botanical paradise. Fertile valleys and sloping hillsides covered with banana, watermelon and coconut groves. The island is also an immense natural greenhouse for the highly-prized Tahitian vanilla orchid. Our **optional half-day Tahaa Island Adventure excursion** will allow us to explore the beautiful interior of Taha'a by 4x4 and discover its luxurious tropical vegetation. You will taste the local fruit and admire breathtaking views of the magnificent turquoise bay of Ha'amene. This excursion also includes a visit to the pearl farm and to a traditional vanilla plantation. Plenty of time in the afternoon for swimming and snorkeling from a motu. Overnight at anchor..





## DAY SIX

Morning sailing across the lagoon to reach nearby Raiatea, which translates to “faraway heaven” and “sky with soft light”. Originally known as Hawai’i, Raiatea is considered the homeland of the ancient Polynesians. Our **morning optional excursion** will introduce you to the highlights of Raiatea. Meet your guide for an informative and intimate tour by minibus. Enjoy a panoramic drive through the main town of Uturoa, the cultural and administrative center of Raiatea. Shortly after leaving town, you will see Mount Temehani, endemic home to the Tiare Apetahi. Our highlight stop is at the main ancient Marae (open-air temple) of Taputapuatea, recently became a UNESCO protected site –your guide will cover the origins and history of this famous landmark. Here, we will learn about its Polynesian origins and historical relevance. **Optional afternoon tour** includes an exploration by kayak of the Faaroa River, French Polynesia's only navigable river, with an expert guide leading the way through Raiatea's verdant interior. Late in the evening, we sail to Moorea. Overnight at sea.





# Moorea

## DAY SEVEN

This morning we reach Moorea, believed to have inspired the mythical Bali Hai from James Michener's Tales of the South Pacific. Moorea is a geographical marvel. Eight voluminous mountain peaks rise right from its translucent lagoon creating a distinctive and rugged silhouette visible from the western coast of Tahiti.

Pick either of **our two optional excursions**, Snorkeling and ray tour or the Nature & Culture of Moorea. Tonight, we will enjoy our Farewell Dinner. Overnight at anchor.







# Tahiti

DAY EIGHT PORT OF PAPEETE

Morning sailing from Moorea to Papeete.

Disembarkation between 9 to 10 am.





# *Welcome*

to the islands of Tahiti

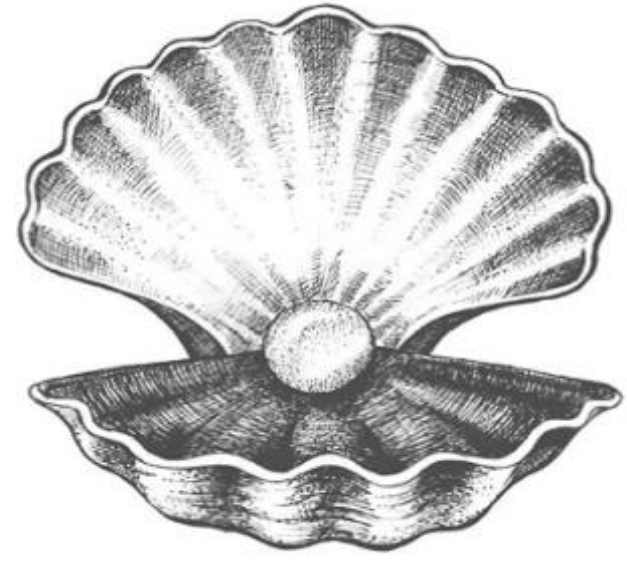
The Journey Begins...

**The Society and Tuamotu Islands Cruise**

**10-night / 11-day cruises**

**Select Sailings | All Year Around 2022 & 2023**





# Day By Day

10-night/11-day cruise

1

Tahiti - Papeete

5

Huahine

8

Tikehau

2

Bora Bora

6

Makatea

9

Tetiaroa-Moorea

3

Bora Bora – Taha'a

7

Rangiroa

10

Moorea

4

Raiatea

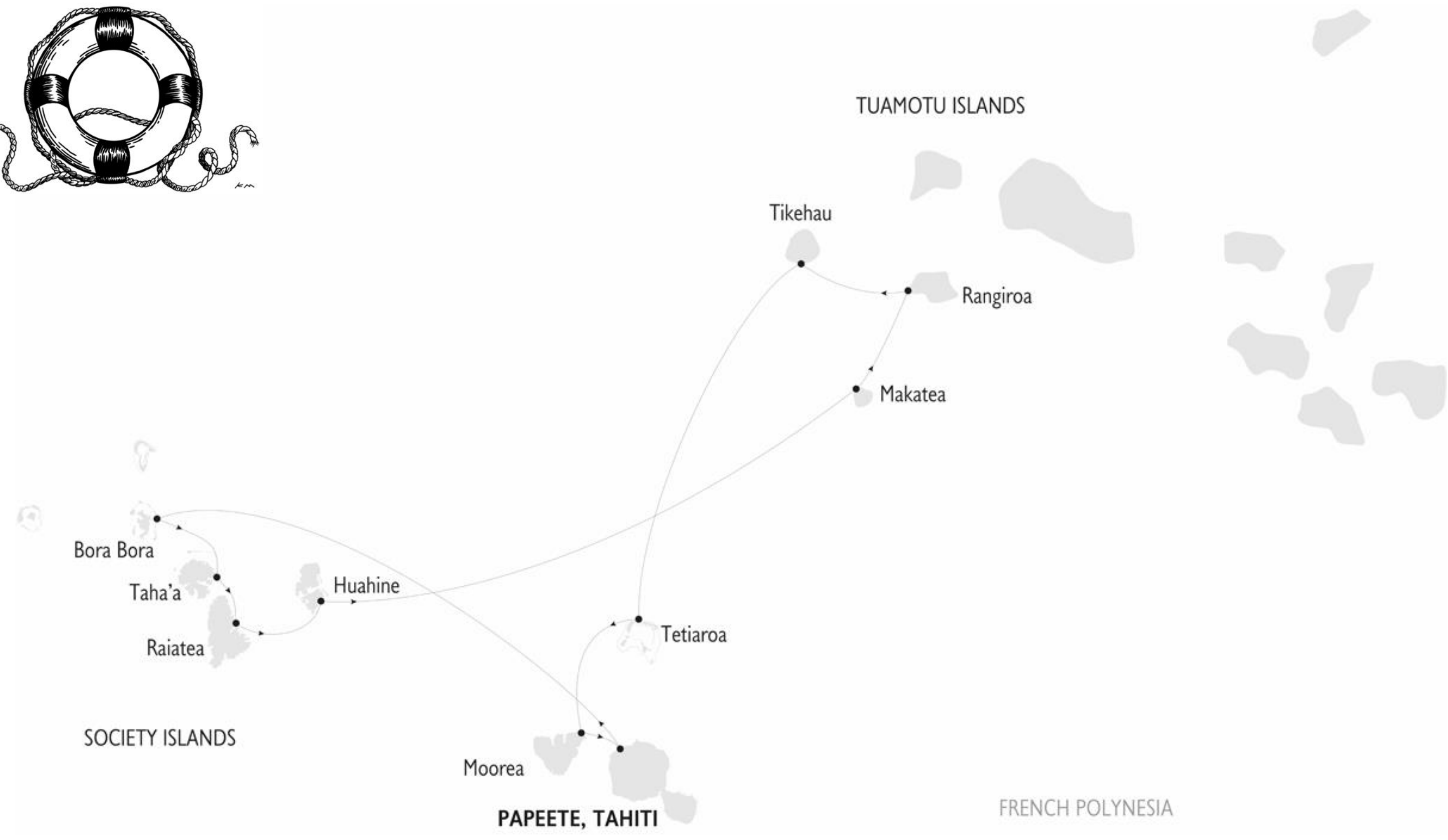
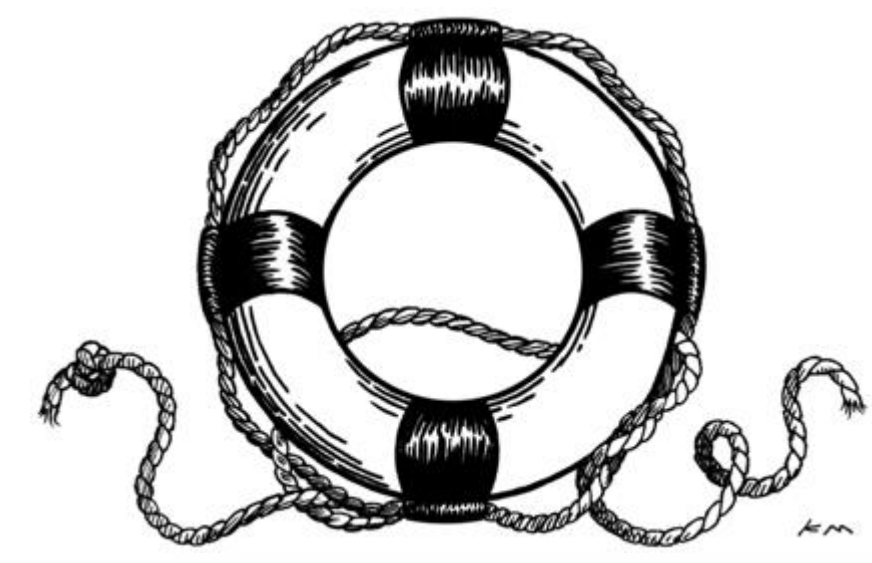
11

Tahiti, Papeete



# Map

10-night program Tahiti- Tahiti



FRENCH POLYNESIA



# Tahiti

DAY ONE PORT OF PAPEETE

Embarkation Papeete Port between 2.30 and 4 pm.

Port is easily accessed from the Papeete airport and Tahiti hotels. (max 30 min transfers)

Welcome Cocktail, safety drill and Welcome Dinner.

Sailing at 5.30 pm. Overnight at sea





# Bora Bora

DAY TWO

Early morning arrival in Bora Bora possibly the most photographed place on earth and one dreams to visit once in their lifetime. Our ship enters Bora Bora lagoon with Mount Tamanu standing tall in the center. We will be spending 2 days in this paradise and chose from **a variety of optional activities** such as a/ Bora Bora Cultural Tour by 4x4 b/ Snorkeling with Stingrays and Sharks excursion, c/the Bora Bora tour by "le Truck" and more. Overnight at anchor.





# Bora Bora - Taha'a

Today we continue our **optional Bora Bora activities and excursions**. After lunch we sail to Taha'a Island, a true botanical paradise. Her fertile valleys and sloping hillsides are covered with banana, watermelon and coconut groves. The island is also an immense natural greenhouse for the highly prized Tahitian vanilla orchid. Our **optional half-day Taha Island Adventure excursion** will allow us to explore the beautiful interior of Taha'a by 4x4 and discover its luxurious tropical vegetation. You will taste the local fruit and admire breathtaking views of the magnificent turquoise bay of Ha'amene. This excursion also includes a visit to the pearl farm and a traditional vanilla plantation. In the afternoon we will have plenty of time for swimming and snorkeling from a motu. Overnight at anchor.



DAY THREE





## DAY FOUR



In the morning we sail across the lagoon and reach nearby Raiatea, which translates to “faraway heaven” and “sky with soft light”. Originally known as Hawai’i, Raiatea is considered the homeland of the ancient Polynesians. Our **morning optional excursion** will introduce you to the highlights of Raiatea. Meet your guide for an informative & intimate tour by minibus. Enjoy a panoramic drive through the main town of Uturoa, the cultural and administrative center of Raiatea. Shortly after leaving town, you will see Mount Temehani, endemic home to the Tiare Apetahi. Our highlight stop is at the main ancient Marae (open-air temple) of Taputapuatea, recently became a UNESCO protected site; your guide will cover the origins & history of this famous landmark. Here, we will learn about its Polynesian origins and historical relevance. **Optional afternoon tour** includes an exploration by kayak of the Faaroa River, French Polynesia's only navigable river, with an expert guide leading the way through Raiatea's verdant interior. Overnight at anchor.



# Huahine

DAY FIVE

Morning sailing to Huahine. Huahine, once home to Tahitian royalty, is considered the cradle of Polynesian culture. The two islands maintain the largest concentration of ancient marae (temples) in French Polynesia, some of which are believed to date back to around 700AD. Huahine is a colossal tropical jungle burgeoning with coconut plantations, vanilla orchids, banana groves, breadfruit trees and watermelon fields. Our **optional half-day tour** takes us by 4x4 vehicle around the island to visit the small villages of Fare and Maeva, an archaeological site, and a vanilla plantation. There will also be an opportunity to see and feed the sacred blue-eyed eels of Faie Bay. Evening sailing to Makatea, overnight at sea.





# Makatea

DAY SIX

The island of Makatea is like no other found in French Polynesia. It is not a coral atoll but rather a raised island of coral. The limestone cliffs tower over the coast and the island interior shows significant vegetation, complete with a few species of endemic birds and a peculiar expanse of limestone holes. Today, this sleepy but spectacular island is home to three species of threatened endemic birds: the beautiful Makatea fruit dove, the impressive imperial pigeon, and the comely appearing singer extraordinaire, the reed warbler. **Our half-day optional tour** will take us across this unique island to a magnificent beach with rock pools to explore before visiting an incredible grotto. Swimming deeper inside the grotto, this underwater cave system will slowly open out to reveal a spectacular watery cathedral, full of weird and wonderful stalagmites and stalactites. Late afternoon departure to Rangiroa. Overnight at sea.





## DAY SEVEN

Morning arrival in Rangiroa, the largest atoll in the Tuamotu Archipelago and one of the largest atolls in the world. One of the best destinations for scuba diving, Rangiroa is composed of 240 islets, more than 110 miles, encompassing a deep lagoon.

Our **optional excursion** will take us to the Blue Lagoon, a natural pool formed by islets and reefs within the central lagoon. At only 16 ft depth, the Blue Lagoon is an ideal location for swimming, snorkeling, and for observing the vast assortment of its marine life. Enjoy a traditional Polynesian picnic before returning to the ship. Depending on the tide, you may even drift snorkel in the Avatoru Pass. Overnight at anchor.





# Tikehau

## DAY EIGHT

Early morning sailing and arrival at Tikehau also called the Pink Sand Island. This small atoll consists of countless tiny white and pink sand islets engulfed in coconut groves and hidden alcoves. In Tikehau, which actually means "peaceful landing", you will find nothing but absolute serenity on calm and graceful shores. The lagoon, formed by an almost unbroken ring of continuous coral, resembles an immense natural swimming pool. This underwater aquarium is teeming with marine life. According to the legendary marine researcher Jacques Cousteau, it has the higher concentration of fish than any other lagoon in French Polynesia. Our optional walking tour will take us to one of the family-owned fish farms where they trap different species of fish in a maze of underwater fencing. We will visit Tuherahera at the southern side, where most locals live leaving the remainder of the atoll virtually untouched. Naturally adorned with colorful flowers such as hibiscus and bougainvillea, Tuherahera is one of the most attractive villages in the Tuamotu Atolls. Afternoon sailing to Tetiaroa.





# Tetiaroa

## DAY NINE | THE MARLON BRANDO ISLAND

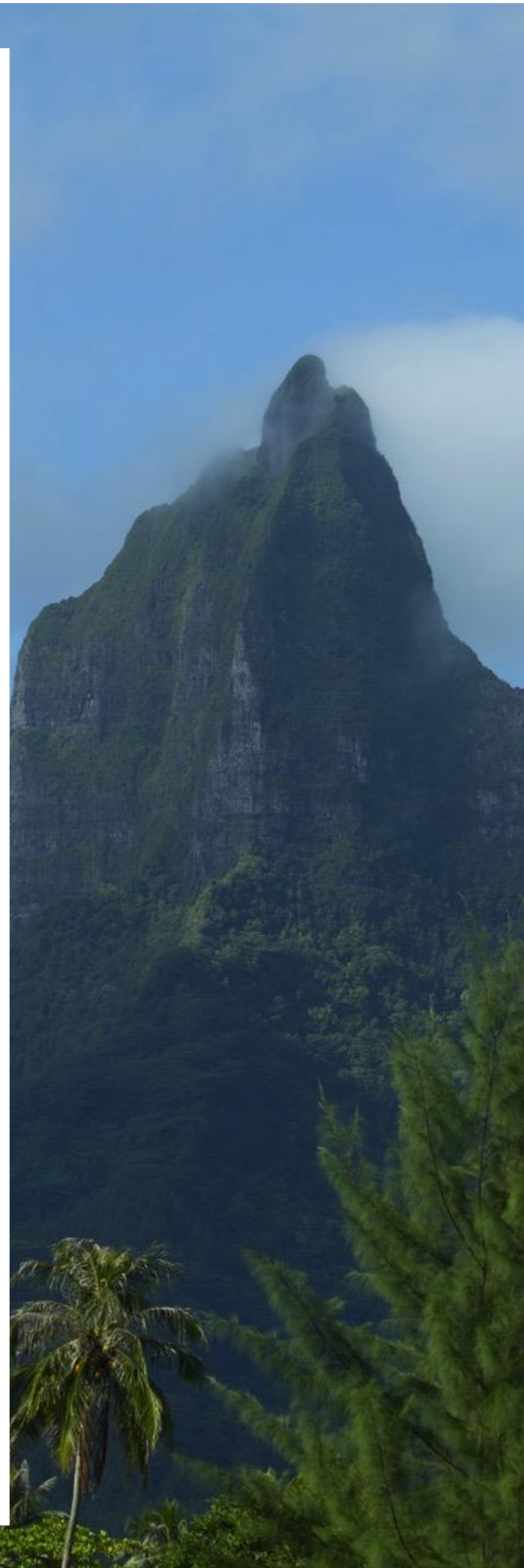


A haven for birds, sea turtles, and all kinds of marine life, Tetiaroa is treasured among Tahitians who know it as a sacred place. So sacred, that at one time the coconut-dotted white sand beaches and crystalline lagoon of this uninhabited atoll was an exclusive getaway for Tahitian royalty.

It's not surprising that actor Marlon Brando fell under its spell during the filming of "Mutiny on the Bounty" in 1960 and later went on to become its owner. Under his direction a luxury eco-resort was designed and it operates in a 100% sustainable manner.

We will spend the morning in this charming island exploring the lagoon and snorkeling in its crystal clear waters. Enjoy also an optional guided walking tour to the islet of Tahuna Iti, the Birds' Island that shelters one of the largest colony of birds in Tahiti as a national reserve for seabirds, frigates, sterns, phaetons (straw tails), brown gannets and other petrels. Afternoon sailing and evening arrival at Moorea.





# Moorea

## DAY TEN

We reach Moorea mid-day. Moorea is believed to have inspired the mythical Bali Hai from James Michener's Tales of the South Pacific being a geographical marvel. Eight voluminous mountain peaks rise from its translucent lagoon creating a distinctive but rugged silhouette.

Select either of our optional afternoon excursions, Snorkeling and ray feeding Tour or The 3 Coconuts Hiking Tour.

Tonight, we will enjoy our Farewell Dinner.

Overnight at anchor.





# Tahiti

DAY ELEVEN | PORT OF PAPEETE

Morning sailing from Moorea to Papeete.

Disembarkation between 9 to 10 am.