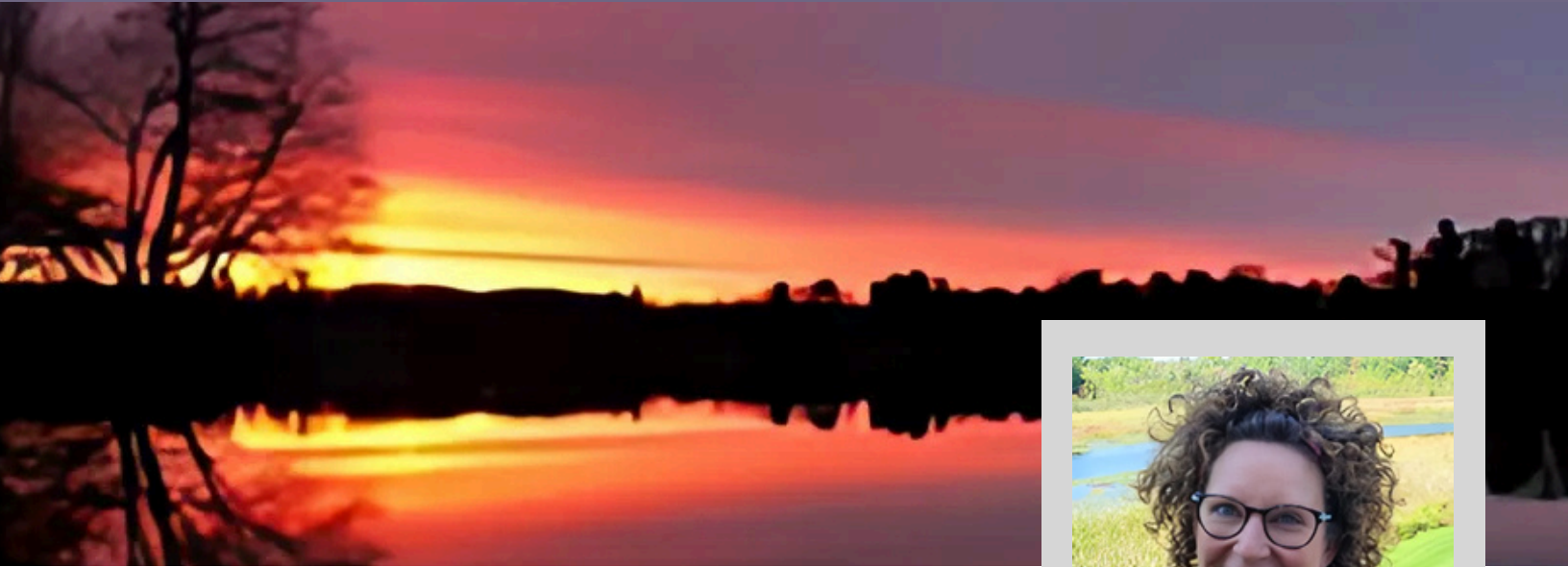


THE WATERLINE

THE OFFICIAL WOODBECK CHAIN OF LAKES ASSOCIATION NEWSLETTER



A Word From Wendi



January 4, 2025

HAPPY NEW YEAR FRIENDS AND NEIGHBORS!

2025 is here! The stroke of midnight came, the ball dropped, the champagne flowed, and a new year was welcomed in! With it comes new beginnings and endless possibilities. That is why we love to celebrate a new year!

2025 is the Year of the Wood Snake in the Chinese New Year. It is a rare combination that only occurs once every 60 years. The snake symbolizes traits like intuition and strategy. The Wood element emphasizes growth, stability, and creativity. The energy of the Wood Snake will make 2025 the perfect year for strengthening bonds with loved ones. It will encourage empathy, deep communication, and mutual understanding, fostering stronger personal relationships. So...I encourage you to let your Wood Snake take center stage this year!! I guarantee you won't regret it!

Bring on the New Year! Bring on the Wood Snake! Bring on the Superbowl, GO LIONS! And...bring on the New Waterline! It is packed full of positive energy and information you don't want to miss!

That's all for now!

Kindly,

Wendi Davidson

WCLA President

WHAT'S HAPPENING?

Past Events ~ Ladies of the Lakes Wine & Charcuterie

In lieu of the cookie exchange this holiday season, the Ladies of the Lakes gathered at Deb Eaton's on Thomas Lake for some wine, charcuterie, holiday cookies, and FOOTBALL! Despite the LIONS falling short to the Bills (sigh), the ladies enjoyed the festive scenery and gathering with friends new & old.



If you are interested in hosting the next Ladies of the Lakes gathering, please contact Candie Ritsema

Reynhout Contracting LLC

Landscaping & Sitework since 1991

Landscaping, Retaining Walls, Patios, Seeding
Erosion Control, Drain Tile Trenching, Grading
Bobcat & Mini Excavator Service

616-291-8189

twreynhout@gmail.com

Stout Built

Since  2011

Licensed & Insured

Landry Stout

Carpenter/Owner

Trufant, MI

(616) 824-4431

WHAT'S HAPPENING?

Upcoming Events

Social Dinner

Thursday January 23rd @ 6:00 p.m.
 Location: Water Tower Grille ~ Candlestone
 8100 Storey Rd. Belding
 RSVP: Candie Ritsema (616) 835-2488
 candieritsema@yahoo.com



Social Dinner

Thursday February 27th @ 6:00 p.m.
 Location: TBD

WCLA Board Meeting

Monday March 10th @ 6:30 p.m.
 Location: Wendi's house
 13337 Oakcrest Ave

Social Dinner

Tuesday March 18th @ 6:00 p.m.
 Location: TBD

ATTENTION WACKER NATION!

The Birdie is Out of the Cage!

**WEDNESDAY WACKER'S GOLF LEAGUE
 JUST GETS BIGGER AND BETTER!**

SPREAD THE NEWS!

**WE ARE MOVING TO THE BEAUTIFUL
 LINKS AT BOWEN LAKE**

**WHAT MORE COULD A WACKER ASK FOR???
 OH...THERE'S A LOT MORE!**

**DO NOT MISS OUT ON THE NEXT
 CHAPTER OF WACKER NATION FUN!!!**

**WHAT HAPPENS NEXT IS AWESOME!!!!
 PAPA WACKER NEEDS TO HEAR
 FROM YOU TO SHARE DETAILS!**

**CALL OR TEXT NORMAN DAVIDSON
 PAPA WACKER @ (616) 799-2425
 OR [CLICK HERE TO CONNECT ON FACEBOOK](#)**

INTRODUCING WCLA OFFICERS

Many of you already know me as the WCLA President but let me share a little bit you might not know about me. I have been married to my husband Norman for twenty wonderful years. He is a Golf Pro and businessman. He recently sold his business, The Golf Emporium, and now enjoys his landscaping business, Birdie Landscaping. You will frequently see him on "Trixie" the track loader working on projects around our home or other homes on the lakes. We live on the point between Thomas and Half Mile Lake. We moved here in 2015 and cannot imagine living anywhere else! I have two kids and five grandkids that we love spending time with. I work full time as a Neonatal Nurse Practitioner at Trinity Health in the Neonatal Intensive Care Unit. This is my true passion, and my career rolled into one (how lucky am I)! I have been in this role for 27 years and was an RN in the Neonatal ICU for 16 years prior to becoming an NNP. I did my undergraduate studies at UofM and received my Master's degree from Georgetown University in Washington D.C. I am an expert reviewer for neonatal medical malpractice cases, and I teach several classes for nurses and physicians. When I am not caring for premature and sick newborn babies, I love to run, hike mountains, write poetry, play golf and hang out on the lakes, my pool or on the pontoon boat with my husband and our two English bulldogs, Birdie and Eagle. I love to relax with a glass of wine...or something else equally as satisfying, especially on the boat. I love being a part of the lake community and look forward to continuing to contribute to our association any way I can.

Wendi Davidson ~ President



Chris Decker ~ Vice President



Chris Decker lives on half-mile lake with his wife Ann, two kids (Nora & Teague), and two fur babies. Chris and Ann have lived on the lakes together for over 20 years. Chris also grew up on the chain-of-lakes and moved away to get an education and find his life's path. After graduation from Michigan State with a B.S. and a M.S. from Michigan (Ann Arbor), Chris began his career in the environmental sciences as a consultant to many of the larger companies operating in the Detroit and Toledo metropolises. In 2003, Chris met his soul mate Ann and convinced her to sell her home in Vicksburg and to move to this awesome chain-of-lakes. After their move to the lakes, Chris started his own consulting company and got involved with our lake association. Chris's first role was to start up the weed control committee and stayed as chairperson for 10 years. During that time, Chris also helped many other lake business committees including bi-laws revisions, bridge raising, and volunteering for social activities. As your newly voted in Vice- President, Chris looks forward to being active in our lake activities, conducting business as chairperson of the lakes sustainability committee and assisting our wonderful President with tasks that make this community a great place to live and play.

INTRODUCING WCLA OFFICERS

Hello! My name is Kris Ferguson, I've been the WCLA Board Secretary since 2015 except for taking a break the year that our daughter graduated. My husband Jeff and I have 3 kids and 2 grandchildren - son Brett, wife Elizabeth, their kids Killian & Stella, son Kyle, wife Tuyen, and our daughter Haley. Jeff and I are from the Wyoming/Grand Rapids area and have lived in Greenville for about 28 years, raising our family on 11 acres down the road from the lakes. All 3 kids graduated from Greenville High-go Jackets! We bought our cottage on Woodbeck Lake in 2008, then in 2018 built our current home on the same property. We love to spend time with our family and host family gatherings, travel, snorkel, go boating and fishing (mostly Jeff), crash bon-fires, and attend lake events. I also enjoy swimming and have swam across Woodbeck at the longest length with lake friends for 3 years in a row. Being a board member has been a great way to get to know others in our lake community, see firsthand the work that the different committees perform, and hear the great ideas that go into planning fun events!

Kris Ferguson ~ Secretary



Jamie Skinner - Treasurer



Jamie joined the WCLA Board as Treasurer in August 2024. Since moving to Banks Lake with her husband Art and their children, Kelan and Charlea (along with furbabies Drake & Roger), in November 2018, Jamie has embraced the vibrant lake lifestyle. Whether it's boating, swimming, or simply soaking in the serene surroundings, Jamie finds immense joy in spending quality time with loved ones by the water.

Among being an avid reader and puzzle nerd, Jamie spends much of her time relishing in her children's hobbies. If not on the lake you can typically find her at a BMX track with Kelan or alongside a volleyball court with Charlea. Her philosophy of working hard and playing harder defines both her personal and professional life.

In her role as Vice President of Franchise Operations for Young Chefs Academy in Waco, TX, Jamie plays a pivotal role in fostering entrepreneurial opportunities through the Academy's culinary-focused programs. Alongside her corporate career, Jamie and Art own Fred's Auto Service in Greenville, MI, demonstrating their shared commitment to community-driven business ventures.

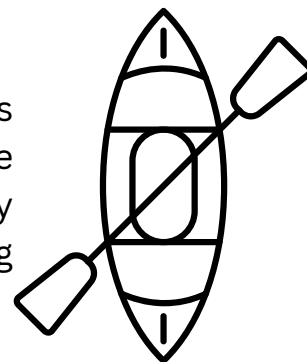
UPDATES & MORE



The WCLA Golf Outing is a favorite among lake residents, friends, and family and it is time to pass the baton. We are in **urgent** need of someone to organize the outing for this summer and **it's important to get started months in advance**. If you are looking for a way to help our social community, please contact Candie Ritsema.

Progressive Kayak Party

MARK YOUR CALENDARS!!! This year's Progressive Kayak Party is scheduled for July 19th, 2025! We will start on Horseshoe and paddle our way to Thomas with a stop on Woodbeck and Banks along the way for a light sip and snack. If you would like to be one of our stops along the way (WCLA helps with costs), please reach out to Candie Ritsema!



We are sad to report that our beloved Elvis has retired and will not be returning to the lakes in 2025. Thank you to Bev Jones for sharing Elvis with our lakes for many years, this has been a fan favorite amongst lake residents and he will surely be missed.

"SIX" INCREDIBLE GOLF LESSONS \$99

"Simply the best lesson format in the country"

Starting the week of April 14th Sign up NOW!

Students come once a week for 6 weeks

Classes available 10am or 6:30pm, Mon thru Sat.

Norm Davidson - Master Teaching Professional

FRED'S AUTO & HEAVY DUTY SERVICE

ART & JAMIE SKINNER
 1202 E VAN DEINSE ST
 GREENVILLE, MI 48838
 (616) 754-5971
 FREDSAUTOSERVICES@OUTLOOK.COM

COMPUTER DIAGNOSTICS - FRONT END ALIGNMENTS
SUSPENSION REPAIR - HEAVY DUTY TRUCK REPAIR

UPDATES & MORE

HERE
FISHY
FISHY
FISHY



Thank you to everyone who continues to contribute to the fish fund, your contributions go a long way towards the \$5k-\$7k spent annually to stock our lakes with fish! In November, the members of the Fish Plant committee along with some onlookers met Stoney Creek Fisheries & Equipment at the Macclain St. bridge to welcome 2,000 5"-8" walleye to our lakes. A special thank you to Don Hoogerhyde, Ed Armbruster, & Bruce Veldman from our fish committee along with Tom Meyer for helping facilitate a seamless transition.



WELCOME TO THE LAKES



Arron & Cat Adams
Woodbeck Lake

Hi! We're Arron & Cat Adams. We moved to Woodbeck mid November and are excited to be here. Arron is retired from the Marine Corps and Cat is a photographer and yoga instructor. We have 2 kids, Cameron (23) and Gracelyn (21) who both graduated from Greenville. Bring on summer!

**If you are new to the lakes or know someone who is, please contact our welcome committee Phil & Denise Sliva*

Your Pontoon Headquarters Since 1975

RHYNARDS
Pontoons

Kevin & Mike Andrews

AVALON

The Art of the Pontoon

HEWITT

DOCKS - LIFTS - PONTOON LEGS



616-754-7634

1380 S. Greenville Rd. Greenville, Mi 48838

10%

Off accessories
 With this coupon

REMINDERS



The Meal Train is always available to help you in the event of illness, injury or death of a loved one that lives with you (even if it's only for a short period of time). Your friends and neighbors are here to help! Please contact Mara Iteen who will make all of the arrangements necessary to meet your needs.

If you want to be a part of the Meal Train to provide meals when needed, please contact Mara Iteen and let her know that you would like to be on the list. When someone is in need Mara will contact those on the list and you can sign up as needed.

BOATERS SAFETY

Spring is just around the corner, making it the perfect time for kids and young adults to complete the Boater's Safety Course!

This is an ongoing opportunity for anyone aged 12-20 to earn a \$15 Amazon gift card upon completing the course—available year-round! Whether you're a young resident living on the lakes or a grandchild of a paid Lake Association member, you can take the course online at your convenience.

Here's how it works:

1. Complete the Boater's Safety Course anytime during the year.
2. Email a copy of your completion card to davidsonwendi@gmail.com.
3. Receive your \$15 gift card—it's that easy!

Not only is this a simple way to earn a reward, but it's also an important step in helping to keep our lakes safe.

Ready to get started? Click here to begin your online course: [Boater's Safety Course](#).



[CLICK HERE](#) for the latest copy of The Michigan Riparian Magazine supplied by Michigan Lakes and Streams Association



Andrea Belding

REALTOR® - Broker
ABR - RENE - PSA - SRS

616-240-1472

12810 Lincoln Lake Ave, Gowen, MI 49326

andreaeldingrealtor@gmail.com

flatriverassociates.com

Flat River
— ASSOCIATES —

REAL ESTATE
COLLECTIVE

RUSSELL

PLUMBING & HEATING

421 E. Fairplains Greenville, MI 48838

Providing Expert Plumbing and HVAC Solutions

Phone: (616) 649-2353

Toll Free: (866) 640-0200

Email: info@russellplumbingandheating.com

Web address: www.russellplumbingandheating.com

Locally Owned & Operated
24 HR EMERGENCY SERVICE

REMINDERS

Lake Mapping

In 2024, WCLA invested in lake mapping put together by PLM showing depths and hardness levels of all the lakes. These maps are available to members once they have paid their 2025 dues by reaching out to Chris Decker.



The Kindy boat launch is closed for the winter. Please note that this location is not a designated lake access point. To help deter unauthorized use, a plastic snow fence and Private Property signs have been installed to inform individuals that accessing the lakes from this area is considered trespassing. As these are private lakes, our goal is to minimize unauthorized access and protect the integrity of the community. If you have a desire to access a lake other than the one you live on please contact one of the lake reps and they may be able to help you make the proper arrangements. Thank you for your understanding and cooperation.

WCLA Photo Directory: Connecting Our Lake Community!

Discover the joy of putting faces to names and learning more about our wonderful lakeside community! The WCLA Photo Directory, thoughtfully created by Phil Sliva, is now available on the WCLA website: [CLICK HERE to view the latest version.](#)

Participation is optional, but we'd love to see everyone represented! To join in, simply email Phil at philsliva@chartermi.net with:

A photo of you and your family

A picture of your home as seen from the lakeside

Let's make our directory a vibrant showcase of the Woodbeck Chain of Lakes community!

coverconcepts
— fabric covering specialists —

Christine Bazzett
coverconcepts@gmail.com

251 Lincoln Lake Rd SE
Lowell, MI 49331
Phone: (616) 897-5678

Upholstery/Boat Covers • Boat Lift Canopies • Repairs • Custom Sewing • Industrial Sewing

Residential & Commercial



Carpet • Furniture
Rent-A-Space Storage Units Available

THE FURNITURE SHED

12741 Old 14 Mile Road
Greenville, MI 48838

Where your dollar buys more
Phone (616) 754-7550

Bob, Ginger & Tom
Salisbury



WINTER AT THE LAKE IS A PARADOX

ARTICLE PROVIDED BY MARILYN KLEMM

Winter is off to a slow to start this year. The lake has barely frozen over only to melt in a few days. Snow is equally hesitant, dusting the skeletal branches of trees but leaving much of the ground bare.

Life slows round the lake in winter. As one looks around summer cottages are closed, year-round residents are sheltered inside. As the days shortened and the nights grew colder, the lake takes on a life of its own. At twilight, lights from the occasional car cast a bright glow across the icy water. On particularly cold mornings, the mist rising from the lake's surface freezes mid-air, creating a thick blanket of fog that envelops the shoreline.

On a rare morning the lake reveals a frozen surface, its delicate layer of ice that is a fleeting transformation, a quiet moment of beauty before the sun's warmth begins to reclaim its hold, leaving only the promise of more frozen mornings to come.

Winter at the lake is a paradox, both desolate and vibrant. It is a time of reflection, of reconnecting with a time that moved a little slower. The lake, in its icy splendor, holds stories of its own, as the ice creaks and the wind howls, swirling the snow into magical shapes that dance across the surface. And as the season wears on, there is comfort in being a part of it, a quiet witness to the relationship of resilience and stillness in the heart of winter.



Owner: Marilyn Klemm
Website: lakesidenatives.com

Email: lakesideperennial@gmail.com

Instagram: [lakesideperennialnursery](https://www.instagram.com/lakesideperennialnursery)

Facebook: Lakeside Perennial & Native Plant Nursery

Half Mile Lake
13800 Pinewood St.
Gowen, MI 49326
Cell: (616) 835-5638

Nursery License: #203298



OUR MISSION

The Woodbeck Chain of Lakes Association will promote the preservation of lake/water quality, provide education about boat safety & etiquette and initiate social activities to promote community friendships and interaction. It will encourage membership and participation in the Association and will facilitate a sense of community amongst riparian property owners.



The WCLA Waterline is published three times a year, brimming with valuable updates and engaging content. Have an idea for an article? We'd love to hear it! Better yet, if you'd like to contribute by writing an article, we'd greatly appreciate your input.

The next issue is set to be released in May 2025, and the deadline for article submissions and advertisements is May 5th. Submit articles and ideas to Jamie Skinner

It's Time to Pay Your 2025 WCLA Dues!

A heartfelt thank you to everyone who supports our lakes by paying their dues. Your contributions make a big difference in keeping our lake community thriving!

Dues are just \$40.00 for the year—that's only \$3.34 per month, less than the cost of a Starbucks coffee!

Your dues go a long way toward:

- Keeping our lakes clean and safe
- Funding canal signage and other communications
- Covering maintenance, repairs, and unexpected issues
- Supporting fish stocking and ensuring plentiful fishing
- Sponsoring fun community events we all enjoy

How to Pay:

- Online: Visit woodbeckchainoflakes.com/pay-dues
- By Mail:

Make checks payable to WCLA and mail to:

PO Box 482, Greenville, MI 48838

If your name isn't on the paid membership list (below), we haven't received your payment. Remember, dues must be paid to use the boat launches.

The 2025 paid membership list will be included in every issue of the President's Corner and Waterline as a handy reminder. 😊

Thank you for your continued dedication to our lakes!





SPONSORS

Affordable Advertising Opportunity!

Thank you to all local businesses for choosing to advertise with us. Advertise in all three issues (January, May, and September) is just \$35—that's less than \$12 per issue! Contact Jamie Skinner for additional information.

Carpet • Furniture
Rent-A-Space Storage Units Available



THE FURNITURE SHED

12741 Old 14 Mile Road
Greenville, MI 48838

Where your dollar buys more
Phone (616) 754-7550



Bob, Ginger & Tom
Salisbury

Casa Mortgage Pros

Amber Covell

Cover Concepts

Flat River Associates

Andrea Belding

Fred's Auto Service

Lakeside Perennials

Norm Davidson aka Papa Wacker

FRED'S AUTO & HEAVY DUTY SERVICE



ART & JAMIE SKINNER
1202 E VAN DEINSE ST
GREENVILLE, MI 48838
(616) 754-5971

FREDAUTOSERVICES@OUTLOOK.COM

COMPUTER DIAGNOSTICS - FRONT END ALIGNMENTS
SUSPENSION REPAIR - HEAVY DUTY TRUCK REPAIR

Reynhout Contracting LLC

Landscaping & Sitework since 1991

Landscaping, Retaining Walls, Patios, Seeding
Erosion Control, Drain Tile Trenching, Grading
Bobcat & Mini Excavator Service

616-291-8189

twreynhout@gmail.com

Andrea Belding

REALTOR® - Broker
ABR - RENE - PSA - SRS

616-240-1472

12810 Lincoln Lake Ave, Gowen, MI 49326

andreabeldingrealtor@gmail.com

flatriverassociates.com

Flat River
- ASSOCIATES -

REAL ESTATE
COLLECTIVE

RUSSELL

PLUMBING & HEATING

421 E. Fairplains Greenville, MI 48838

Providing Expert Plumbing and HVAC Solutions

Phone: (616) 649-2353

Toll Free: (866) 640-0200

Email: info@russellplumbingandheating.com

Web address: www.russellplumbingandheating.com

Locally Owned & Operated

24 HR EMERGENCY SERVICE

Reynhout Contracting LLC

Rhynards Pontoons

Russell Plumbing & Heating

Stout Built

The Furniture Shed



Owner: Marilyn Klemm
Website: lakesidenatives.com
Email: lakesideperennial@gmail.com
Instagram: lakesideperennialnursery
Facebook: Lakeside Perennial & Native Plant Nursery

Half Mile Lake
13800 Pinewood St.
Gowen, MI 49326
Cell: (616) 835-5638
Nursery License: #203298

Amber Covell
LOAN ORIGINATOR | NMLS 1059016
Casa Mortgage Pros
PHONE: 616-747-8245
EMAIL: AMBER@ELEVATIONMORTGAGES.COM
3181 PRAIRIE STREET SW, SUITE 109,
GRANDVILLE, MICHIGAN 49418

Powered BY Elevation Mortgage, LLC | NMLS 1999730

coverconcepts
fabric covering specialists
Christine Bazzett
coverconcepts@gmail.com
251 Lincoln Lake Rd SE
Lowell, MI 49331
Phone: (616) 897-5678
Upholstery/Boat Covers • Boat Lift Canopies • Repairs • Custom Sewing • Industrial Sewing
Residential & Commercial

Stout Built
Since 2011
Licensed & Insured
Landry Stout
Carpenter/Owner
Trufant, MI
(616) 824-4431

2024/2025 WCLA OFFICERS AND LAKE REPRESENTATIVES

PRESIDENT	Wendi Davidson	(616) 799-0412	davidsonwendi@gmail.com
VICE PRESIDENT	Chris Decker	(616) 302-0819	c_dec@hotmail.com
SECRETARY	Kris Ferguson	(616) 299-1739	scrambledeggs85@gmail.com
TREASURER	Jamie Skinner	(616) 813-9841	woodbeckcla@gmail.com
BANKS LAKE REPRESENTATIVES			
	*Ed Armbruster	(616) 947-4487	luger@prodigy.net
	**Kevin Bird	(616) 218-5323	kcb5357@yahoo.com
	**Jamie Skinner	(616) 813-9841	woodbeckcla@gmail.com
Alternate	Carol Bird	(616) 225-3757	kcb5357@yahoo.com
Alternate	Pam Swigart		unsaltedsparkles@gmail.com
HALFMILE LAKE REPRESENTATIVES			
	*Chris Decker	(616) 302-0819	c_dec@hotmail.com
	**Marilyn Klemm	(616) 835-5638	marilynklemm@gmail.com
	**Thomas Reynhout	(616) 291-8189	twreynhout@gmail.com
Alternate	Rob Reigler	(616) 836-1966	rob@lakesideinc.com
HORSESHOE LAKE REPRESENTATIVES			
	**Bob Darvill	(269) 267-7692	bobdarvill@gmail.com
	*Don Hoogerhyde	(616) 990-8687	d_hoog@hotmail.com
	**Phil Sliva	(616) 970-2273	philsliva@chartermi.net
Alternate	Lou Fierens	(248) 420-1290	ljfierens@comcast.net
Alternate	Tom Meyer	(616) 862-1171	tjm8600@gmail.com
THOMAS LAKE REPRESENTATIVES			
	**Kim Covell	(616) 754-9592	covellscove5@gmail.com
	*Wendi Davidson	(616) 799-0412	davidsonwendi@gmail.com
	*Mike Liden	(616) 901-7995	lidsbkl86@sbcglobal.net
Alternate	Norm Davidson	(616) 799-2425	norm@thegolfemporium.com
WOODBEEK LAKE REPRESENTATIVES			
	**Kris Ferguson	(616) 299-1739	scrambledeggs85@gmail.com
	*Kevin Martin	(616) 893-9508	homey@chartermi.net
	**Candie Ritsema	(616) 835-2488	candieritsema@yahoo.com
Alternate	Wayne King	(616) 490-5977	waynedking@gmail.com
Alternate	Marty Scheel	(616) 299-2437	junk535@hotmail.com

* Term Ends 8/31/25

** Term Ends 8/31/26

ADMINISTRATORS & COMMITTEE LEADERS			
Communications	Faith Peterson	(517) 242-8918	wclacommunications@gmail.com
Directory & Welcome Team	Phil & Denise Sliva	(616) 970-2273	philsliva@chartermi.net
Fish Plant/Signs/Boat Launch	Don Hoogerhyde	(616) 990-8687	d_hoog@hotmail.com
	Ed Armbruster	(616) 947-4487	luger@prodigy.net
Golf Outing			
Meal Train Coordinator	Mara Iteen	(616) 255-6081	iteenmm@yahoo.com
Membership Database	Jamie Skinner	(616) 813-9841	woodbeckcla@gmail.com
Membership Payments	Jamie Skinner	(616) 813-9841	woodbeckcla@gmail.com
Social Director	Candie Ritsema	(616) 835-2488	candieritsema@yahoo.com
Social Media	Aaron Antcliff	(616) 329-8305	aaron.antcliff@gmail.com
Water Sustainability	Chris Decker	(616) 302-0819	c_dec@hotmail.com
Waterline & Advertising	Jamie Skinner	(616) 813-9841	woodbeckcla@gmail.com

FIVE LAKES - ONE COMMUNITY

WOODBECK CHAIN OF LAKES - PAID MEMBERS BY LAKE FOR FISCAL YEAR 9/1/24 - 8/31/25							(Updated 1/14/25)	
BANKS	HALF MILE	HORSESHOE	THOMAS	WOODBECK	TOTAL	GOAL		
Armbruster, Ed & Bobby	Alexander, Bob & Vicki	Bolman, Mary Jane	Antcliff, Aaron & Karen	Allers, Robert & Sandra				
Badgerow, Randy & Jamie	Bosker, Paul & Marlene & Bosker, Craig	Brim, Frederick & Sandra	Bloem, Phil & Mary Ellen	Billmeier, Ron & Toni				
Bird, Kevin & Carol	Bush, Ted & Therese	Bruick, Rick & Joy	Butler, Mike & Guffin, Carol	Cerakewski, Mark				
Capps, Tom & Carol	Camp Concordia	Darvill, Bob & Karin	Corcoran, Joe & Kathy	Cushman, Derek & Lori				
Day, Steve & Lisa & Loeschner, Joe & Lydia	Carbonelli, Larry & Karen	Deane, Harry & Cathy	Cowell, Jim & Kim	Ebel, Dan & Robin				
Hutchison, Scott & Mindy	Crame, Ron	DeWendt, David & Michelle	Davidson, Norm & Wendi	Ferguson, Jeff & Kris				
Koning, Kurt & Lady	Decker, Chris & Ann	Dickinson, Scott & Kim	Gasper, Jim & Tammi	Groth, Paul & Linda				
Kraal, Steve & Rebecca	Hallock, Bryan & Lisa	Ficell, Marcia	Haas, Tom & Marcia	Heath, Alicia & Sander-son, Amanda				
Lind, Tim & Kristie	Harris, Vickie	Fierens, Lou & Michelle	Kiuba, Denis & Karen	Higgins, Bryan & Becky				
Mills, Mike & Lisa	Jones, Tim & Joselyn	Fuller, Robert & Alicia	Koogler, Nick & Kat	Houseman, Kate & Wassenaar, Craig				
Monroe, Steve & Lynn	Katterjohn, Carl	Hansen, David & Cynthia	Lemmerman, Sara	Hunter, Tim & Teri				
Nielsen, Marilyn	Klemm, Bruce & Marilyn	Hollenbeck, Tim	Liden, Mike & Bonnie	Jones, Beverly				
Nienhuis, Mike & Joyce	Lauderdale, Burt & Jennifer	Hoogerhyde, Don & Lois	Shaw, John & Linda	Jones, Jeff & Wendy				
Redding, Craig & Darlene	Layle, Tom & Donna	Jousma, Randy & Jeri	Sprague, Rick & Deb	King, Wayne & Kathie				
Rydeski, Ken & Mary	Reynhout, Tom & Bruinsma, Jennifer	LaMarte, Roy & Mary	Stratton, Mark & Mary Jo	Knapp, Mike & Diane				
Salisbury, Robert & Ginger	Riegler, Rob	Leslie, Jon & Andrea	Teachworth, Ryan & Jamie	Laurent Family Cottage				
Skinner, Art & Jamie	Ross, Elizabeth	Merren, Mike & Danel	Tokar, Renee	Marcks, Tim				
Spauding, Steve & Joyce	Rupp, Pat	Merdzinski, James & Melanie	Walser, James & Joyce	Martin, Kevin & Renee				
Stobinski, James & Irene	Schrauben, Nicholas & Cathy	Meyer, Tom & Kim	Wilson, Jeff & Diane	McCollum, Matt & Jaime				
Tumble, Ron & Maureen	Zeis, Deb & Marian	Petersen, Brian & Amy		Mortensen, Jim & Kristen				
Waterloo, Tom & Teresa		Moldenhauer, Michael & Tamara		Niewiek, Joe & Petersen Kari				
Woronecki, Dave & Kris		Petersen, Mike		Nowicki, Paul & Deb				
		Peterson, Kim & Faith		Reed, Kevin & Kim				
		Piechocki, Mike & Patricia		Ritsem, Dave & Candie				
		Post, Bob & Sue		Scott, Tom & Mary				
		Sage, Linda		Taylor, Jane, & Weykamp, Ben				
		Simmons, Kim & Judy		Thornton, Todd & Charissa				
		Siva, Phil & Denise		Tidey, Keith & Kim				
		VanBruggen, Jon & Ricki		VanPortfleet, Tom & Mary				
		Zystra, Blake & Font, Sarah		Walhorn, Ed & Joy				
				Wolthuis, Jim & Karen				
				Wolthuis, Mike & Katherine				
22	20	29	19	32	122	Pd to Date		
31	52	59	55	62	259	# of Res		
71%	38%	49%	35%	52%	47%	% pd to date		
2025 Budget Goal is 80% of total residents - Our Current % of Goal is						2025 GOAL:	210	