



## KISS PROOF VELVET LIP MUD

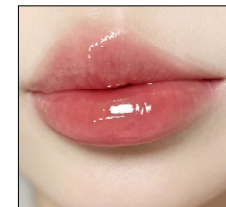
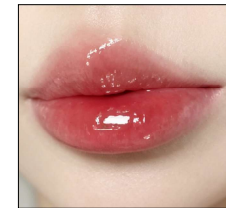
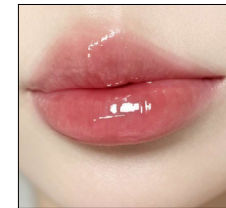
NET CONTENT: 2.1g

### STOCK COLOR



### FEATURES

Featuring a soft mousse texture, this lip mud glides effortlessly onto the lips, blurring lip lines and creating a smooth, cloud-like matte finish. The advanced color-locking formula forms a lightweight film that helps resist transfer, keeping your lip color fresh and vibrant for hours.



## KISS PROOF MIRRORING PLUMPY LIP GLOSS

NET CONTENT: 2.1g

### STOCK COLOR



### FEATURES

Powered by advanced color-lock technology, this innovative lip gloss forms a lightweight, flexible film that helps resist transfer while maintaining an ultra-glossy finish. Unlike traditional glosses that fade away completely, the nourishing oil layer gradually wears off throughout the day, while the vibrant color remains beautifully intact.

PREMIUM BEAUTY AND COSMETICS MANUFACTURER  
ONE VISION, ONE PARTNER, ONE STOP SOLUTION.

# One Stop Beauty Hub



## TWO-TONE LIP OIL

NET CONTENT: 2.5g



- FEATURES**
- 1. Dual-chamber two-tone design | Gloss base + colored tint separate
  - 2. Light non-sticky texture | Watery slip, no heavy greasy layer
  - 3. Nourishing plant oil complex | Smooth dry chapped lip lines
  - 4. Gradient natural gloss | Build custom tint by blending two hues
  - 5. Multi-shade matching | Fit all skin tones for daily makeup
  - 6. Long-lasting moisturizing | Lock lip moisture all day long
  - 7. Slim portable tube | Easy squeeze & on-the-go touch up
  - 8. Dual-use effect | Clear care or colored lip makeup in one



## DONUT PLUMPING LIP GLOSS

NET CONTENT: 10g



- FEATURES**
- 1. Donut cute design | Cute portable look, high appearance
  - 2. Glossy watery texture | Plump juicy baby lips
  - 3. Non-sticky formula | No hair sticking, comfy all day
  - 4. Smooth lip filler | Covers lip lines instantly
  - 5. Plant nourishing | Makeup & lip care in one, non-dry
  - 6. Universal mild shades | Brighten dark lips for all skin ton
  - 7. Quick film & longwear | Less fading & patchy makeup
  - 8. Multi-purpose lip gloss | All-season cost-effective essent

PREMIUM BEAUTY AND COSMETICS MANUFACTURER  
ONE VISION, ONE PARTNER, ONE STOP SOLUTION.

# One Stop Beauty Hub



## SHIMMERING DUAL END LIP GLOSS

NET CONTENT: 2g+2g

### STOCK COLOR



### FEATURES

Transform every lip look with the Shimmering Dual-End Lip Gloss. Featuring two dazzling finishes in one convenient design, this innovative dual-ended gloss combines radiant color and sparkling shimmer to create customizable lip looks ranging from everyday elegance to full-glam brilliance.



## PRESSING SOLID LIP GLOSS (Only removes oil film without fading)

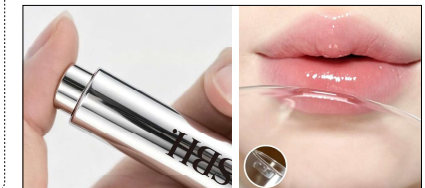
NET CONTENT: 2.5g

### STOCK COLOR



### FEATURES

1. Dual-layer film tech | Top oil peels off, base color locked firmly
2. Push-up solid design | Hygienic & controllable dosage, no leakage
3. Solid glossy texture | Hydrating non-sticky, no hair sticking
4. Fills lip lines instantly | Blur rough lips for plump baby lips
5. Nutritious lip care formula | Long wear while moisturizing lips
6. All-flattering mild shades | Fit all skin tones, great for no-makeup look
7. All-day longwear | Only top oil fades, no patchy fading
8. Multi-functional all-season | Replaces lip balm & lip gloss, high cost performance



**PREMIUM BEAUTY AND COSMETICS MANUFACTURER**  
ONE VISION, ONE PARTNER, ONE STOP SOLUTION.

# One Stop Beauty Hub



## BLACK HONEY PDRN REPAIR LIP BALM

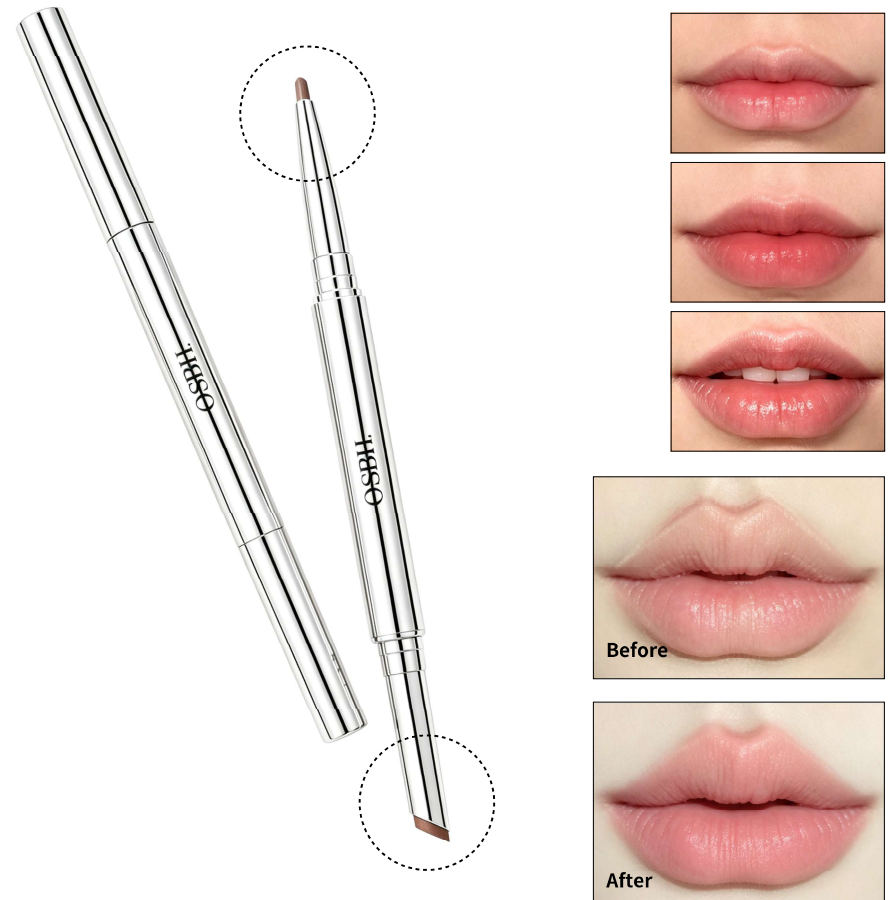
NET CONTENT: 2.5g

### STOCK COLOR



### FEATURES

1. Core dual active formula | Salmon-derived PDRN + concentrated black honey extract
2. Medical-grade repair ingredient | Promote lip cell regeneration, fade dry cracking
3. High-antioxidant black honey | Deep exfoliate dead cuticle, lighten dark lip tone
4. Mild oil base non-sticky | Silky melt-on-lip texture, no greasy residue
5. Anti-inflammatory soothing | Relieve sensitive red swollen lip discomfort
6. 24h long-lasting hydration | Form protective lipid film to lock moisture
7. Temperature-changing faint tint | Natural amber gloss after lip temperature fusion
8. Day&night dual-use | Daily lip primer + overnight sleeping lip mask



## DUAL END 2IN1 LIP LINER & LIPSTICK

NET CONTENT: 0.20g+0.21g

### STOCK COLOR



### FEATURES

1. Dual-ended 2-in-1 | Line & fill lips with one stick, portable & time-saving.
2. Same color formula | Zero color difference, seamless blending.
3. Dual texture | Precise liner + creamy moisturizing lipstick with Vitamin E & Jojoba Oil.
4. Waterproof longwear | Sweat-proof & transfer-resistant, no cup stain.
5. Beginner friendly | Multiway use, universal shades fit all skin tones.
6. Great value | Replaces lip liner & lipstick for daily use.

PREMIUM BEAUTY AND COSMETICS MANUFACTURER  
ONE VISION, ONE PARTNER, ONE STOP SOLUTION.

# One Stop Beauty Hub



## 2IN1 WATERPROOF TRANSFER-RESISTANT LIP LINER & LIP GLAZE

NET CONTENT: 2.52g

### STOCK COLOR



### FEATURES

1. 2IN1 liner & glaze | All-in-one lip makeup, portable
2. Waterproof | Transfer-resistant & no fade
3. Precise define | Create 3D lip shape easily
4. Same color | Zero mismatched edge
5. Creamy comfy | Non-dry & smooth
6. All-skin shades | Brighten skin tone
7. Multi-use | Cost effective
8. All-day wear | Anti-smudge long lasting



Lip Glaze



Lip Liner



## GLOSSY/VELVET ULTRA-LASTING LIPSTICK

NET CONTENT: 2.5g

### STOCK COLOR



### FEATURES

Designed for beauty lovers who want both long-lasting performance and versatile looks, this ultra-lasting lipstick is available in Glossy and Velvet finishes. Featuring advanced color-lock technology, it delivers intense pigmentation, comfortable wear, and exceptional staying power that lasts from day to night.



PREMIUM BEAUTY AND COSMETICS MANUFACTURER  
ONE VISION, ONE PARTNER, ONE STOP SOLUTION.

# One Stop Beauty Hub



## CLASSIC VELVET LIP STICK

NET CONTENT: 2.5g

### STOCK COLOR



### FEATURES

1. Mild & Hydrating Texture | No dryness, zero burden
2. Makeup & Lip Care Formula | Repair fragile lips long-term
3. Natural Color Correction | Brighten complexion subtly
4. Blur & Fill Lip Lines | Create flawless tender lips
5. Universal Flattering Shades | Fit all skin tones & scenarios
6. Long-lasting Color Lock | Fade-resistant & non-patchy
7. Portable & Easy Touch-up | Compact & hygienic design
8. All-season Multi-use | High cost-performance essential



## SKINSKYN TRI-COLOR TONE UP PRIMER

NET CONTENT: 7.8g

### STOCK COLOR



### FEATURES

Achieve a naturally flawless complexion with SKINSKYN Tri-Color Tone Up Primer. Featuring three color-correcting shades in one innovative formula, it helps neutralize uneven skin tone, brighten dullness, and create a smooth, radiant base for long-lasting makeup



PREMIUM BEAUTY AND COSMETICS MANUFACTURER  
ONE VISION, ONE PARTNER, ONE STOP SOLUTION.

# One Stop Beauty Hub



## SKINSKYN HYDRATING PRIMER

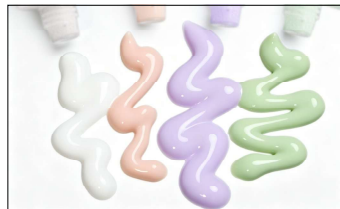
NET CONTENT: 50g

### STOCK COLOR



### FEATURES

Hydrate. Smooth. Perfect.  
Create the perfect canvas for flawless makeup with SKINSKYN Hydrating Primer. Infused with skin-loving moisturizing ingredients, this lightweight primer instantly replenishes hydration, smooths skin texture, and enhances makeup adherence for a naturally radiant, long-lasting finish.



## SKIN TINT SUNSCREEN LIQUID FOUNDATION (With Pendant)

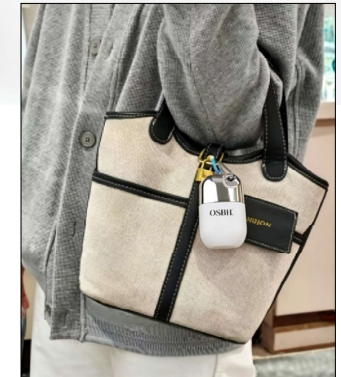
NET CONTENT: 50g

### STOCK COLOR



### FEATURES

1. Luxury pendant design | Detachable charm, elegant & gift-worthy
2. SPF Makeup 2-in-1 | Sunscreen + tinted base, simplify daily makeup
3. Light Skin Tint Texture | Second-skin natural sheer nude finish
4. Skin-nourishing formula | Non-comedogenic, repair skin while wearing
5. Buildable coverage | Covers blemishes without heavy caking
6. Waterproof sweatproof | Long stay, anti-oxidation no cakey makeup
7. Balanced for all skin | Hydrate dry skin & control oily shine all season
8. Multi-purpose high value Replaces sunscreen /primer/foundation, beginner friendly



**PREMIUM BEAUTY AND COSMETICS MANUFACTURER**  
ONE VISION, ONE PARTNER, ONE STOP SOLUTION.

# One Stop Beauty Hub



## OIL-CONTROL INVISIBLE SETTING BALM (With Phone Grip)

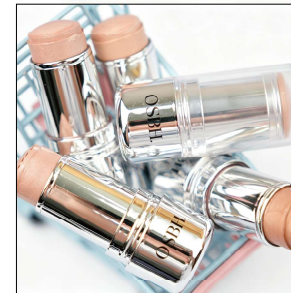
NET CONTENT: 10g

### STOCK COLOR



### FEATURES

1. Freeze-dry craft powder | Light sponge-like bouncy texture
2. Ultra-fine airy powder | Lightweight fit skin | zero heavy powder sense
3. Soft-focus blur pores | Smooth fine lines & uneven skin
4. Mild balanced oil control | Cut excess shine without dry tightness
5. Waterproof sweatproof | Long-lasting fixed makeup anti-fade
6. Natural soft matte | Real translucent nude skin finish
7. Portable compact case | Easy to carry for outdoor touch-up
8. Dual multi-use | Set foundation or apply on bare skin



## FINE GLOW CREAMY HIGHLIGHTER STICK

NET CONTENT: 3.5g

### STOCK COLOR



### FEATURES

1. Silky cream texture | Smooth & non-cakey
2. Natural luminous glow | Soft shimmer without glitter coarse
3. Blur skin texture | Smooth pores & fine lines
4. Strong color payoff | Easy to build stereo facial contour
5. Universal shade | Fit all skin tones & makeup styles
6. Long-lasting adhesion | No fading, no floating makeup
7. Cream portable design | Easy touch-up & travel-friendly
8. Multi-scene use | Face brightening & contour essential



PREMIUM BEAUTY AND COSMETICS MANUFACTURER  
ONE VISION, ONE PARTNER, ONE STOP SOLUTION.

# One Stop Beauty Hub



## SHIMMERING MOCHI HIGHLIGHTER

NET CONTENT: 10g

### STOCK COLOR



### FEATURES

Inspired by the soft, bouncy texture of mochi, this innovative highlighter delivers an irresistible cushion-like touch and a dazzling luminous finish. The unique cream-to-powder formula melts seamlessly into the skin, creating a smooth, radiant glow without emphasizing texture or pores.



## CAT EYE BLUSH STICK

NET CONTENT: 2.5g

### STOCK COLOR



### FEATURES

1. Unique cat-eye cut design | Special curved surface for easy dabbing
2. Jelly bouncy texture | Melt into skin with body heat, non-cakey
3. Mild nourishing formula | Moisturize cheek while coloring
4. Sheer diffused pigment | Natural rosy flush without heavy stripe
5. Universal warm shade | Match fair/olive/dark Asian skin
6. Sweat & oil resistant | Long-wear no fading or patchy makeup
7. Slim portable stick | Twist-up hygienic for pocket touch-up
8. Lip & cheek dual-use | All-season multi-functional makeup



PREMIUM BEAUTY AND COSMETICS MANUFACTURER  
ONE VISION, ONE PARTNER, ONE STOP SOLUTION.

# One Stop Beauty Hub



## 2 IN 1 LIP, CHEEK, EYESHADOW MULTI CREAM

NET CONTENT: 2.5g

### STOCK COLOR



### FEATURES

#### One Product. Endless Possibilities.

Simplify your beauty routine with this versatile Multi Cream designed for lips, cheeks, and eyes. Featuring a silky cream texture and buildable color payoff, it blends effortlessly into the skin to create a naturally fresh, monochromatic makeup look with a soft, healthy glow.



## MULTI-USE LIP & CHEEK BALM

NET CONTENT: 10g

### STOCK COLOR



### FEATURES

1. Mild hydrating texture | Non-dry, comfy on lip & cheek
2. Skincare-infused formula | Nourish & repair delicate skin
3. Natural sheer tint | Brighten complexion without fake heavy color
4. Blur fine lines | Smooth dry texture instantly
5. Universal shades | Suitable for all skin tones & occasions
6. Long wear staying power | Anti-fade & no patchy makeup
7. Compact portable | Twist-up design for easy touch-up
8. All-season multi-purpose | For blush, lip tint & primer, great value



**PREMIUM BEAUTY AND COSMETICS MANUFACTURER**  
**ONE VISION, ONE PARTNER, ONE STOP SOLUTION.**

# One Stop Beauty Hub



## CREAMY BLUSH STICK

NET CONTENT: 3.5g

### STOCK COLOR



### FEATURES

**Swipe. Blend. Glow.**

Bring a fresh, healthy flush to your cheeks with this silky Creamy Blush Stick. Featuring a smooth, blendable texture, it melts effortlessly into the skin, delivering natural-looking color and a radiant glow that looks like it comes from within.



## LIGHTWEIGHT CUSHION FOUNDATION

NET CONTENT: 10g

### STOCK COLOR



### FEATURES

1. Ultra-light airy texture | Cloud-like sheer finish, zero heavy layer
2. Moisturizing skincare base | Hydrate skin while doing makeup
3. Natural sheer coverage | Even tone without mask-like fake white
4. Soft-focus blurring | Minimize pores & subtle uneven flaws
5. Skin-friendly neutral shade | Suitable for most Asian skin tones
6. Oil-control & sweatproof | Anti-oxidation, no darkening all day
7. Compact portable case | Built-in puff, easy quick touch-up
8. Multi-scene daily use | Bare makeup & daily commuting essential



**PREMIUM BEAUTY AND COSMETICS MANUFACTURER**  
**ONE VISION, ONE PARTNER, ONE STOP SOLUTION.**

# One Stop Beauty Hub



## DOUBLE LAYER CREAMY FOUNDATION STICK

NET CONTENT: 7.6g

### STOCK COLOR



### FEATURES

1. Dual-layer core design | Skincare core + makeup outer layer, makeup & care in one
2. Infused skincare essence | Hyaluronic acid & ceramide, non-dry & non-comedogenic
3. Creamy melt-in texture | Smooth spread, natural creamy skin with zero powder look
4. Buildable coverage | Light base conceals pores, build up to cover spots flawlessly
5. Skin-friendly tone & anti-oxidation | Fit Asian skin, no grey/ashy or darkening long-lasting without patchy makeup
7. Stick portable design | No extra tools needed, quick makeup for busy daily use
8. Balanced for all skin types | Multi-function replaces foundation & concealer, great value



## FINE GLOW AIRY LOOSE POWDER

NET CONTENT: 7g

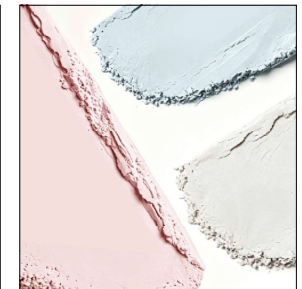
### STOCK COLOR



### FEATURES

#### Air-Light Perfection. Soft-Lit Glow.

Experience the perfect balance of oil control and luminosity with Fine Glow Airy Loose Powder. Featuring ultra-fine lightweight particles and delicate light-reflecting pigments, this silky loose powder sets makeup seamlessly while creating a naturally radiant, soft-focus finish.



PREMIUM BEAUTY AND COSMETICS MANUFACTURER  
ONE VISION, ONE PARTNER, ONE STOP SOLUTION.

# One Stop Beauty Hub



## MARBLE TONE UP SETTING POWDER COMPACT

NET CONTENT: 10g

### STOCK COLOR



### FEATURES

**Set. Brighten. Perfect.**

Elevate your makeup routine with the Marble Tone Up Setting Powder Compact. Featuring a unique multi-color marble pattern, this ultra-fine pressed powder helps set makeup, blur imperfections, control shine, and brighten the complexion for a naturally radiant, airbrushed finish.



## FREEZE-DRIED JELLY PRESSED POWDER

NET CONTENT: 10g

### STOCK COLOR



### FEATURES

1. Freeze-dry craft powder | Light sponge-like bouncy texture
2. Ultra-fine airy powder | Lightweight fit skin zero heavy powder sense
3. Soft-focus blur pores | Smooth fine lines & neyen skin
4. Mild balanced oil control | Cut excess shine without dry tightness
5. Waterproof sweatproof | Long-lasting fixed makeup anti-fade
6. Natural soft matte | Real translucent nude skin finish
7. Portable compact case | Easy to carry for outdoor touch-up
8. Dual multi-use | Set foundation or apply on bare skin



**PREMIUM BEAUTY AND COSMETICS MANUFACTURER**  
ONE VISION, ONE PARTNER, ONE STOP SOLUTION.

# One Stop Beauty Hub



## CLASSIC OIL-CONTROL POWDER COMPACT

NET CONTENT: 10g

### STOCK COLOR



### FEATURES

1. Low-temp baked craft | Compact creamy finewonder texture
2. Rich micron pigment | Smooth lay on skin nochalky residue
3. Soft-focus smoothing | Blur pores & refine meveskin
4. Moderate oil-control | Matte shine withoutstripping moisture
5. Sweat & water resistant Longwear anti-fade nonnatchy
6. Natural velvety finish | Soft velvet nude skineffect
7. Exquisite comact case | Portable for dailytouch-un
8. Multi-scene versatile | Setting /blush/highlightmulti-purpose



PREMIUM BEAUTY AND COSMETICS MANUFACTUER  
ONE VISION, ONE PARTNER, ONE STOP SOLUTION.