

## SCROTUM POLISH

**Massage onto Penis, Scrotum, Anal Region, Under Arms, Neck & Face. If you have outbreaks, continue with your salve and upgrade to the Boil and Blister Balm.**

## ORGAN DETOX HONEY

**This honey is delicious and goes in any food, beverage, or by spoon, Consume every morning and/or throughout the day. Great for cleansing the organs and releasing bowels. Visit the website for mouthwatering recipes.**



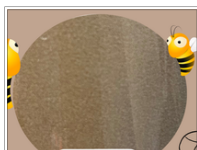
**VIRUS DETOX**  
*blood flow, oxygen, stagnation*



**AMINO ACIDS**  
*block chain, antioxidants, endocrine*



**MARINE LIFE**  
*algae, marine life, immunity*



**SUPREME**  
*all in one over 100 ingredients*



**ALKALINE**  
*bones, glands, cancer*



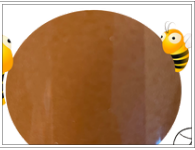
**FERTILITY**  
*quantity, quality, endurance*



**MENS STAMINA**  
*stamina, energy, mood, respiratory*



**SOURSOP SHILAJIT**  
*Fruit and mineral*



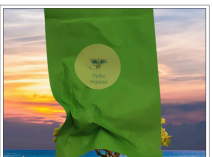
**MUSHROOM**  
*chaga, lions mane, turkey tail, ganoderma, shiitake, maitake, reishi*

Seanjari Preeti Men's Pearl Collection  
Targeted ingestible pearls engineered for the male body—swallow-only, no insertion required. 100% organic & natural



**PROSTATE SUPPORT PEARL**

Maintain healthy prostate volume, urine flow and male hormone balance.



**HIDRADENITIS RELIEF PEARL**

Diminish boil clusters, follicular inflammation and painful sinus tracts.



**STD DEFENSE PEARL**

Full-spectrum microbial sweep for acute or recurrent sexually transmitted infections.



**HEPASHIELD PEARL (LIVER / HEPATITIS)**

Lowers viral load, lightens scleral yellowing, regenerates hepatocytes, eases alcohol craving.



**BONE-ALKALINE PEARL**

Re-mineralise bone matrix, buffer systemic acidity from high-protein diets or alcohol.



**GUT BALANCE PEARL**

Reset male gut flora, quell yeast overgrowth, eliminate sour body odor.



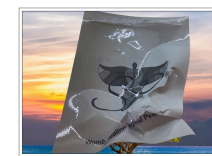
**SEMEN-WELLNESS PEARL**

Boost sperm count, motility and genetic integrity for conception.



**HSV CONTROL PEARL**

Quell herpes flare-ups, nerve pain and post-outbreak scarring.



**HPV IMMUNE-SHIELD PEARL**

Support clearance of high-risk HPV strains and reinforce mucosal immunity.

**HAIR RESTORATION**  
CLEANSE, DETOX, REMOVE PARASITES, PSORIASIS, DANDRUFF, DRY SCALP, DULL HAIR COLOR, ALOPECIA, HAIR LOSS, HAIR THINNING.  
\$15

## SUPPLEMENTS

**Organic & Natural - untainted soil, no fillers, no pesticides. Foreign quality, sold in packages of 30 grams.**



**Damiana Leaf**



**Maca Root**



**Tongkat Ali**



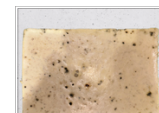
**Tribulus Terrestris**

## DETOX BODY SOAP & SCRUB

USE THIS SOAP FROM CHIN TO PENIS, INCLUDING THE ARMPITS, CHEST, BELLY, AND RECTUM. THESE SOAPS ARE HAND-MADE WITH ORGANIC AND NATURAL INGREDIENTS, SAFE FOR ALL OVER. BLENDS: STAMINA, BACTERIAL, VIRUS, BEAUTY W/ALGAE & ACIDS, TRADITIONAL, SUPREME AND MORE.



**BOIL N BLEMISH SCRUB**



**SUPREME**

A good guy once said: your pearls remind me of nutmeg when I was doing a bid. Came home and things was hard for me. I feel better, and I stopped drinking. I would drink every week, I don't even want a drink. Now I want some of those chocolates you make!

## COLORECTAL CLEANSE

1. Unravel the String: Begin by unraveling the string from the stub of the pearl. This will allow you to remove the pearl later after use.

2. Preparation for Drying: If you experience drying in the rectal area, you can use the Men's Scrotum Detox Polish as a moisturizer before inserting the pearl.

3. Insertion: Using either your finger or the pearl applicator provided, gently insert the pearl into the rectum. Ensure that the unraveled string remains hanging externally from the rectum for easy removal later.

4. Initial Pearling: Pearling typically lasts no more than 30 minutes initially. During this time, the pearl will self-release and you may experience the discharge of waste.

5. Repeat Detox: You may start another detox within 72 hours if desired. As your health improves, the pearl will last longer inside the rectum. Eventually, you will be required to **REMOVE THE PEARL**.

6. No Risk of Stuck Pearl: Rest assured that the pearl cannot get stuck in your rectum. It will always come out when passing bowel movements.

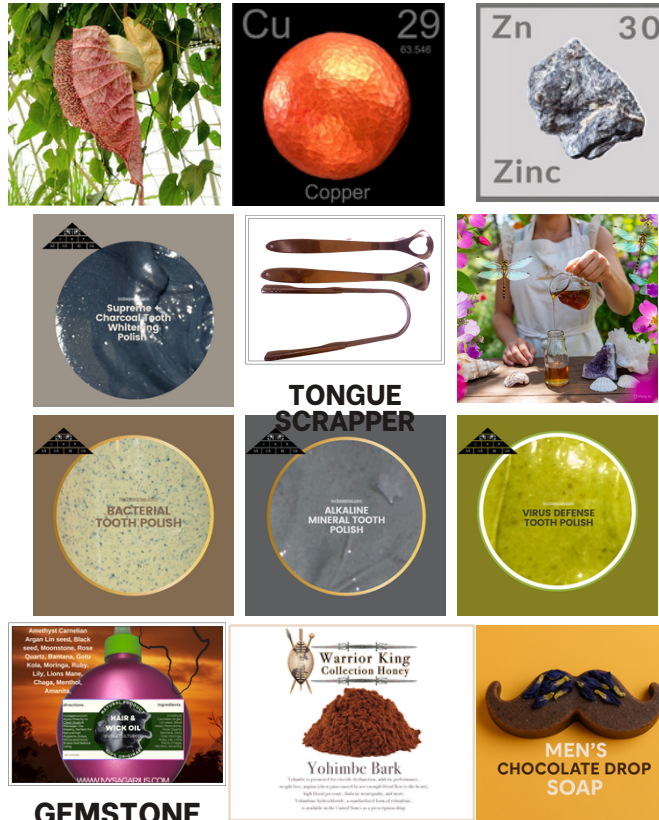
7. Choose Any Pearl: There is no right or wrong pearl to use; each one is formulated for wellness and detoxification.

8. Immediate Results: Results are immediate, and many men have reported being intimate shortly after using the pearls.

9. Herbal Smell: The pearls may have an herbal smell that may linger after usage. This is normal, as some herbs will remain inside the rectum for continued healing.

10. Additional Products: For men using the pearls for 72 hours, the usage of Men's Scrotum Polish, Scrotum Soap, and Detox Honey is highly encouraged to enhance the detox process and overall wellness.

Remember to follow the provided instructions carefully and consult with a healthcare professional if you have any concerns or questions about usage.



### GEMSTONE HAIR OIL

THE BLENDS: after 12 years of formulation, I created Formula 1, a mixture of 166 herbs, Sweet D- A blend of Exotic Fruits, Minerals, Marine Life & Alkaline. Our Herbs are wild-harvested, accompanied by COA, Pharm Grade+ with no cut or fillers, MEANING: You get pure herbs, the most potent and effective, no cut, fillers or preservatives.

- VIRUS – herbal blend for HPV, Herpes, Hepatitis, Blood Disorders, and side effects
- ALKALINE – Mineral Blend for Bone Health, Thyroid, Lymph nodes, Cancer, Senior Care, Dull Skin
- MARINE LIFE – Blend of Algae for Antioxidants, Collagen, Beauty, Restoring Skin Health
- SWEET D- Nuts, Extracts, Beans Intimacy Builder
- SUPREME: Collection of all blends Traditional, Virus, & Alkaline.

**ZELLE/CASHAPP/APPLEPAY: 9189732757**  
**WEBSITE: IVYSAGARIUS.COM**

## Seanjari Preeti Men's Pearl Collection

Targeted ingestible pearls engineered for the male body– swallow-only, no insertion required

Each pearl delivers a concentrated, slow-release core of botanicals chosen for a specific men's-health goal. Within 15 minutes of swallowing, the capsule hydrates, breaks down, and begins a staged detox:

**Stomach phase** (≈ 15–20 min) – the pearl saturates gastric fluid, pulls toxins from the lining, and feeds trace nutrients to blood and liver.

**Intestinal phase** (next 2–4 h) – herbal actives sweep the bowel wall, loosen mucoid plaque, and re-seed beneficial flora.

**Excretory phase** – expect multiple bowel movements (average 8–10 lb of retained waste in men). Stay home, drink ≥ 1 gal/4 L water in the first hour, then sip electrolytes (adult Pedialyte® or coconut water).

### How to take a pearl

- Clip the cotton tail and unwind any gauze.
- Drink a few mouthfuls of water first.
- Place the whole pearl on the tongue and swallow with more water. Can't swallow? Crush between two spoons, tip the powder into the mouth, and chase with water.
- Continue hydrating until the herbal taste is gone.

### General After-Care

Eat lightly for 24 h (grilled fish, lentils, salads, fruit).

Avoid red meat, dairy, and alcohol to prolong detox benefits.

Resume pearls no more than once weekly unless directed.

Choose your pearl, follow the ritual, and let your body purge the old while you build the new.