

THE BRIDGFORD

3 BEDROOM HOMES



Pelham Homes



THE BRIDGFORD

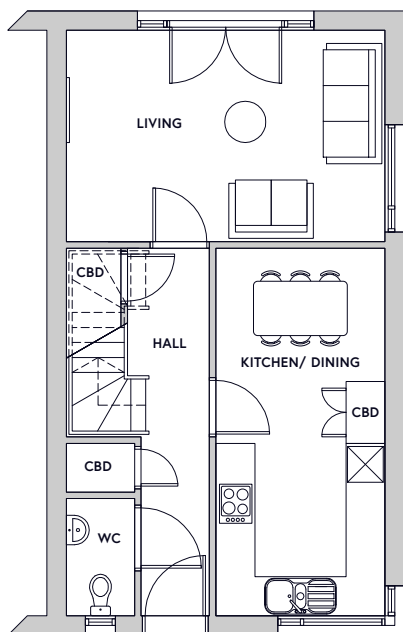


Key Specification

2 Floors

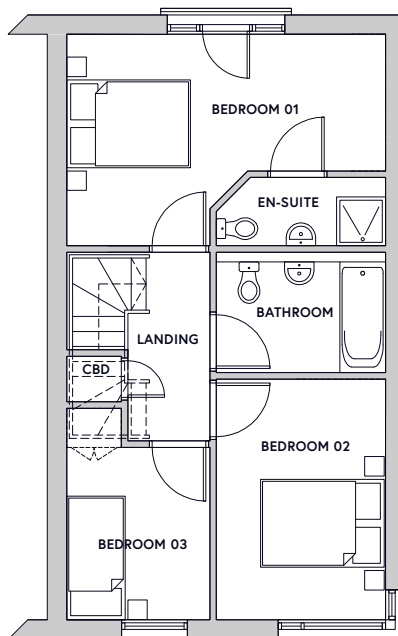
3 Bedrooms

Plots: 08, 09, 15, 16, 17, 23



Ground floor plan

Not to scale



First floor plan

Key Dimensions

Room	Dimensions	
Kitchen / Dining	5.6m x 2.6m	18ft 4in x 8ft 6in
Living Space	4.9m x 3.2m	16ft 1in x 10ft 6in
Bedroom 1	4.9m x 3.2m	16ft 1in x 10ft 6in
Bedroom 2	3.7m x 2.6m	12ft 2in x 8ft 6in
Bedroom 3	3.2m x 2.2m	10ft 6in x 7ft 3in

Gross internal floor area 88m², 947ft²

Note: All measurements are maximum dimensions

For more information and all enquiries contact:



23 Bridgford Rd, West Bridgford
Nottingham NG2 6AU

info@fhpliving.co.uk
www.fhpliving.co.uk



www.pelhamwaterside.co.uk
0115 841 1155