

THE COLWICK

2 BEDROOM HOMES



Pelham Homes



THE COLWICK

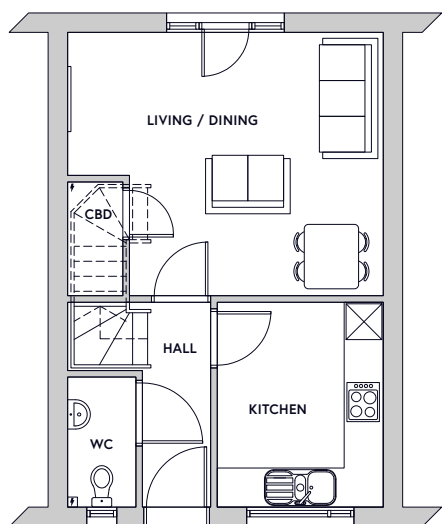


Key Specification

2 Floors

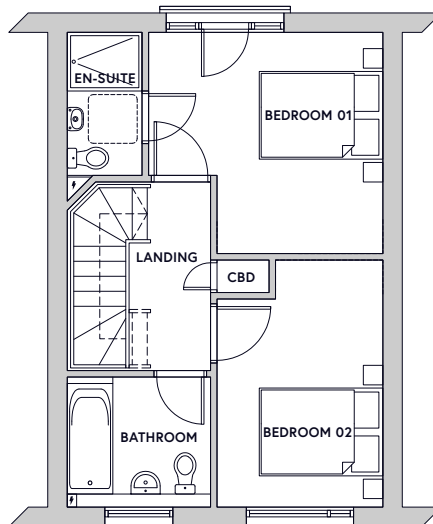
2 Bedrooms

Plots: 21, 22, 31, 34



Ground floor plan

Not to scale



First floor plan

Key Dimensions

Room	Dimensions	
Kitchen	3.1m x 2.5m	10ft 2in x 8ft 2in
Living / Dining	4.8m x 4m	15ft 9in x 13ft 1in
Bedroom 1	3.6m x 3.4m	11ft 9in x 11ft 2in
Bedroom 2	3.7m x 2.5	12ft 2in x 8ft 2in

Gross internal floor area 70.8m², 762ft²

Note: All measurements are maximum dimensions

For more information and all enquiries contact:



23 Bridgford Rd, West Bridgford
Nottingham NG2 6AU

info@fhpliving.co.uk
www.fhpliving.co.uk



www.pelhamwaterside.co.uk
0115 841 1155