

THE GAMSTON

4 BEDROOM HOMES



Pelham Homes

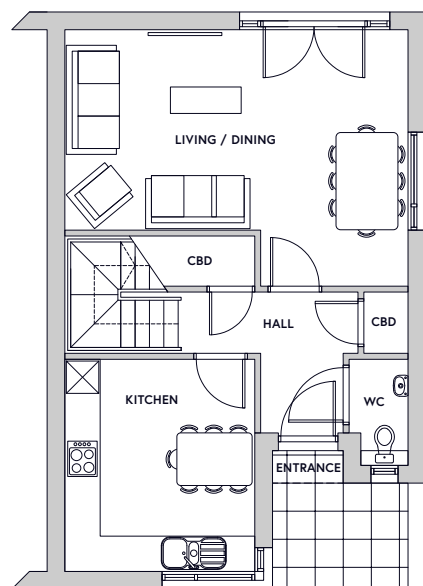


THE GAMSTON



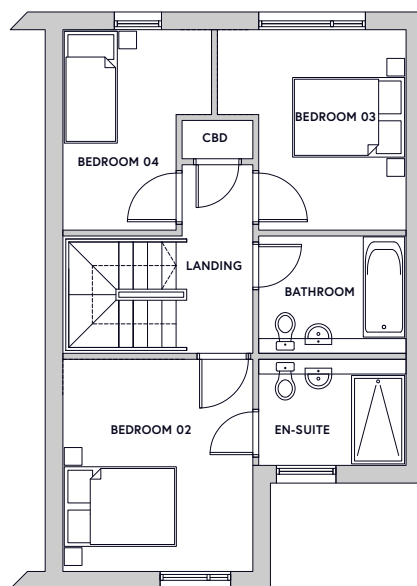
Key Specification

3 Floors
4 Bedrooms
Plots: 35, 40

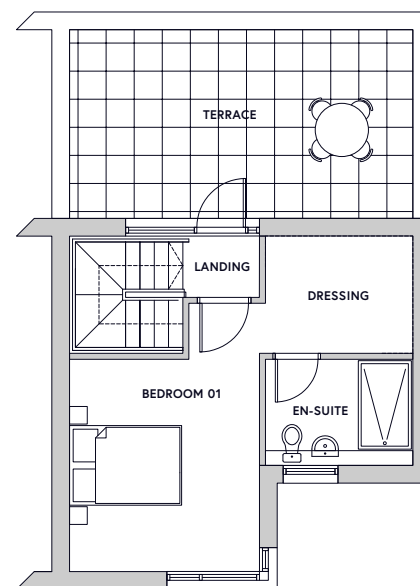


Ground floor plan

Not to scale



First floor plan



Second floor plan

Key Dimensions

Room	Dimensions	
Living / Dining	5.8m x 4.3m	19ft 0in x 14ft 1in
Kitchen	3.6m x 3.2m	11ft 9in x 10ft 6in
Bedroom 1	3.6m x 3.2m	11ft 9in x 10ft 6in
Dressing Area	2.5m x 1.9m	8ft 2in x 6ft 3in
Bedroom 2	3.6m x 3.2m	11ft 9in x 10ft 6in
Bedroom 3	3.4m x 2.9m	11ft 1in x 9ft 6in
Bedroom 4	3.4m x 2.38m	11ft 1in x 7ft 9in
Terrace	5.8m x 3.2m	19ft 0in x 10ft 6in

Gross internal floor area 125m², 1345ft²

Note: All measurements are maximum dimensions

For more information and all enquiries contact:



23 Bridgford Rd, West Bridgford
Nottingham NG2 6AU

info@fhpliving.co.uk
www.fhpliving.co.uk



www.pelhamwaterside.co.uk
0115 841 1155