

THE MAPPERLEY

3 BEDROOM HOMES



Pelham Homes



THE MAPPERLEY

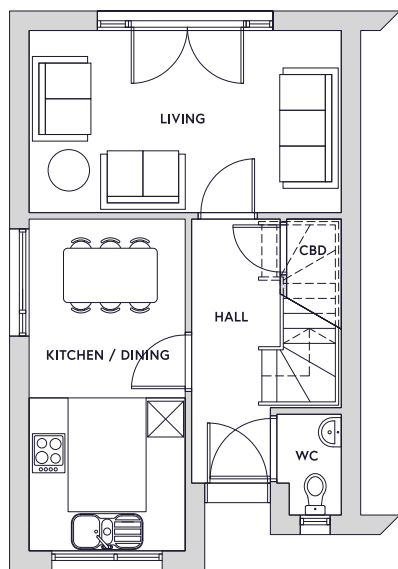


Key Specification

3 Floors

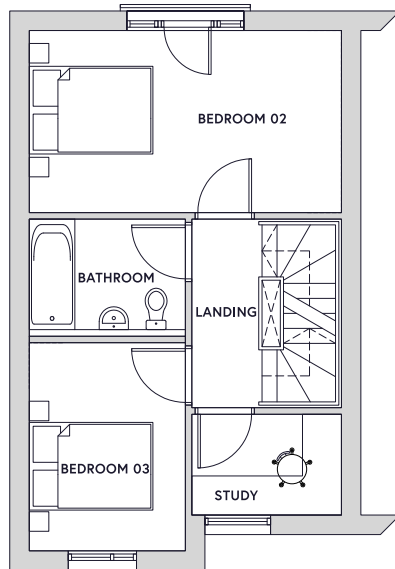
3 Bedrooms

Plots: 01*, 03, 04, 05, 07*, 18, 19, 49 *including a corner window on the ground and second floor

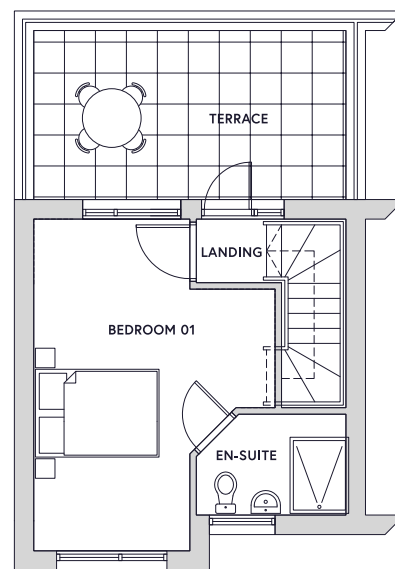


Ground floor plan

Not to scale



First floor plan



Second floor plan

Key Dimensions

Room	Dimensions	
Kitchen / Dining	5.1m x 2.4m	16ft 8in x 7ft 10in
Living Space	4.8m x 2.8m	15ft 8in x 9ft 2in
Bedroom 1	5.1m x 2.4m*	16ft 8in x 7ft 10in*
Bedroom 2	4.8m x 2.8m	15ft 8in x 9ft 2in
Bedroom 3	3.2m x 2.4m	10ft 5in x 7ft 10in
Study	2.3m x 1.5m	7ft 6in x 4ft 11in
Terrace	4.8m x 2.6m	15ft 8in x 8ft 6in

Gross internal floor area 96.4m², 1038ft² *plus bay
 Note: All measurements are maximum dimensions

For more information and all enquiries contact:



23 Bridgford Rd, West Bridgford
 Nottingham NG2 6AU

info@fhpliving.co.uk
 www.fhpliving.co.uk



www.pelhamwaterside.co.uk
 0115 841 1155