

THE WILFORD

3 BEDROOM HOMES



Pelham Homes



THE WILFORD

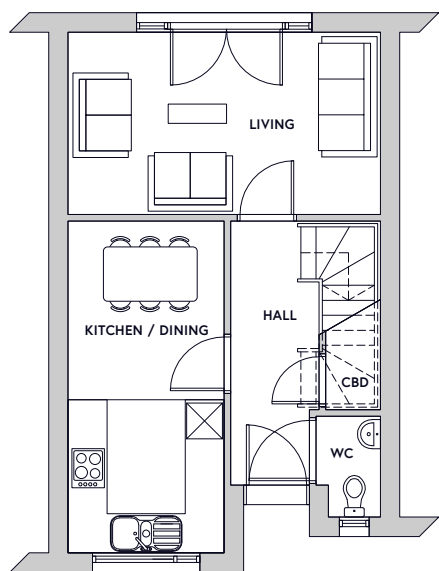


Key Specification

3 Floors

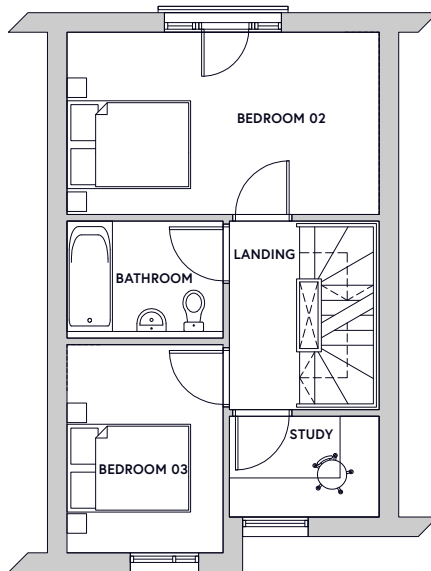
3 Bedrooms

Plots: 10, 11, 12, 13, 14, 32, 33

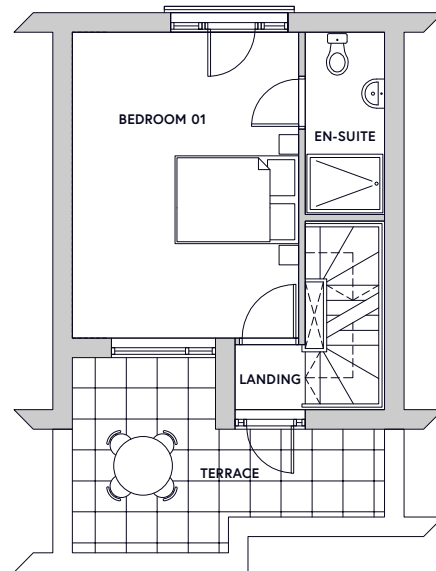


Ground floor plan

Not to scale



First floor plan



Second floor plan

Key Dimensions

Room	Dimensions	
Kitchen / Dining	5.1m x 2.4m	16ft 9in x 7ft 10in
Living Space	4.8m x 2.8m	15ft 9in x 9ft 2in
Bedroom 1	4.7m x 3.4m	15ft 5in x 11ft 2in
Bedroom 2	4.8m x 2.8m	15ft 9in x 9ft 2in
Bedroom 3	3.2m x 2.4m	10ft 6in x 7ft 10in
Study	2.3m x 1.5m	7ft 7in x 4ft 11in
Terrace	4.7m x 4.2m narrows to 1.3m	15ft 5in x 13ft 9in narrows to 4ft 3in

Gross internal floor area 98.4m², 1059ft²

Note: All measurements are maximum dimensions

For more information and all enquiries contact:



23 Bridgford Rd, West Bridgford
Nottingham NG2 6AU

info@fhpliving.co.uk
www.fhpliving.co.uk



www.pelhamwaterside.co.uk
0115 841 1155