

STS Saskatoon Chapter — Drumheller Bus Tour Part 2



What you do when the Museum
is lined up for hours... you vist
Drumheller's Little Church...



and...Horse Thief Canyon. Just off the highway known as the Dinosaur Trail, 16 km northwest of Drumheller on the east bank of the Red Deer River.



Turkey supper at Yavos before the Play...

Badlands Passion Play, Drumheller, AB

Canada's largest outdoor stage



It was sunny and hot...

On the way home...

15

HISTORICAL MINE SITE



Arcadia Mine #2

The visible red shale dump 600m southeast from this sign is all that remains of the Arcadia Mine. During its peak, the Arcadia Mine employed over 100 men, most of whom lived in the now-abandoned town of Arcadia - approximately 500 m east of the Hoodoos Recreation Area and Willow Creek, about 1.5 km southwest of this site.

In January 1932, the Arcadia Coal Co. was charged for failing to ensure miners would receive wages owed. Other mines in the Valley suffered the same problem as orders were sometimes scarce and yet maintenance constantly drained finances.

On Aug. 23, 1936 - miners from East Coulee and Arcadia joined the United Mine Workers of America, bringing their wages in line with the Drumheller mines. Prior to this the miners in East Coulee and Arcadia were paid less than their counterparts in the other mining communities. This historic agreement also marked the end of a violent civil war with the UMW and the mine operators on one side, and the Mine Workers Union of Canada, Industrial Workers of the World, and the One Big Union, on the other side.

Location: Sec 7 Twp. 26 N 100 W 4M. | Mine #1229 | Years: 1928 - 1943

Company/Owners: Arcadia Coal Company Ltd. (1928 - 1931)

Middleton Collieries Ltd. (1931) Arcadia Coal Company Ltd. (1932 - 1935)

Imperial Collieries Ltd. (1935 - 1943)

Mine Type: Underground with drift entrance

Mining Method: Longwall | Seam: Minned | Brand name: Parity Hard Coal

Depth: 61 m | Thickness: 1.9 m | Production (Tons): 838,400



ARCADIA COAL MINE

Historical Site

The Arcadia Coal Mine National Historic Site preserves the last of 200 coal mines to operate in the Drumheller Valley.



The Drumheller Hoodoos



The Drumheller Hoodoos are geological wonders that have stood watch at the mouth of Willow Creek Coulee for thousands of years, bearing witness to the people and events that shaped the Red Deer River valley, and Alberta.

To protect this area for future generations, the Government of Alberta has designated this site as a Provincial Historic Resource. Please respect these natural wonders by staying out of the protected area.

Be aware of potential hazards as you enjoy the hoodoos. Some risks include natural elements such as jagged rocks, cacti, and thorny plants. Use caution while walking on the pathways throughout the site.

Please watch your step.

ROYAL TYRRELL MUSEUM
Government of Alberta

YOUR NEXT ADVENTURE
IS JUST 5 MINUTES AWAY IN

HISTORIC EAST COULEE

WHERE THE 'VALLEY OF COAL' COMES ALIVE!

THE
ATLAS
COAL MINE

THE
EAST COULEE
SCHOOL

See where 'Wildfire
Coal' was mined.

See how the coal
miners lived.

Climb the tipple,
go underground
or ride the train.

Experience amazing
stories about the
Valley of Coal!

Exciting tours at a
National Historic Site.

Take a break in
our vintage café.

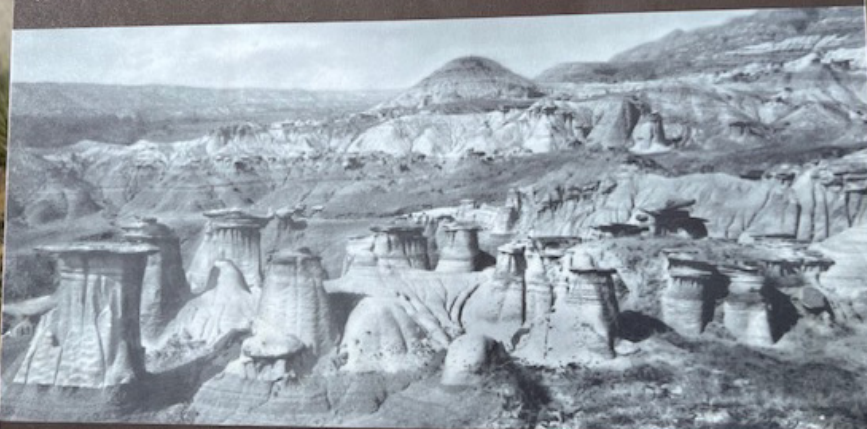
Just head a little
further East for
more historic fun!

It's well worth
the short drive!

The hoodoos have been subjected to the erosion of wind and rain for thousands of years. Compared to this photograph, they are much smaller than they were in the early 1900s. It is not only the natural processes of weather, but also the effects of human

traffic, graffiti and vandalism that have shortened the lifespan of these geologic wonders.

Please help protect what remains of the hoodoos by staying on the designated path and treating these fragile structures with respect.







Had to stop for ice cream...





Our 2025 Drumheller Bus Tour group...



**One very tired bus tour organizer.
Thank you Loretta Metzner for
a wonderful STS Bus Tour to
Drumheller...**

