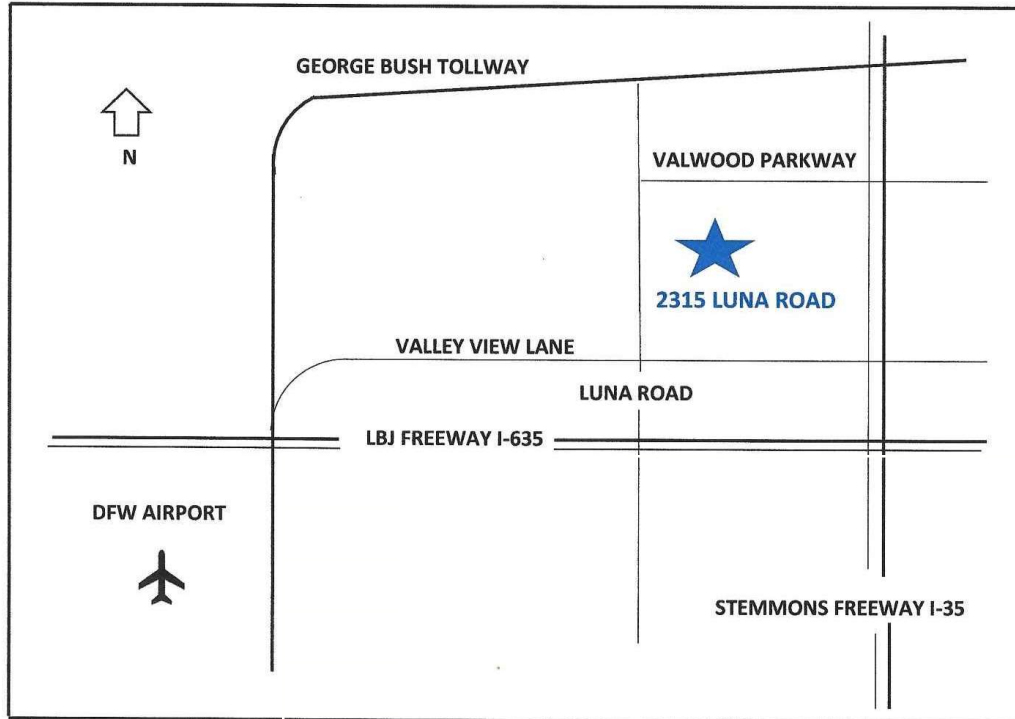


FOR LEASE

FLEX SPACE

2315 LUNA ROAD

SUITE 110
CARROLLTON, TEXAS



SEE SITE PLAN AND FLOOR PLAN ON REVERSE

FEATURES

- 2,839 SQUARE FEET (1,339 SF OFFICE AND 1,500 SF WAREHOUSE)
- HIGH VISIBILITY LOCATION
- FULL GLASS STOREFRONT
- 100% AIR CONDITIONED
- ONE (1) 10' x 10' GRADE LEVEL LOADING DOOR
- CONVENIENT TO D/FW AIRPORT, LOVE FIELD AND NORTH DALLAS

FOR INFORMATION CALL GREGG HAMILL

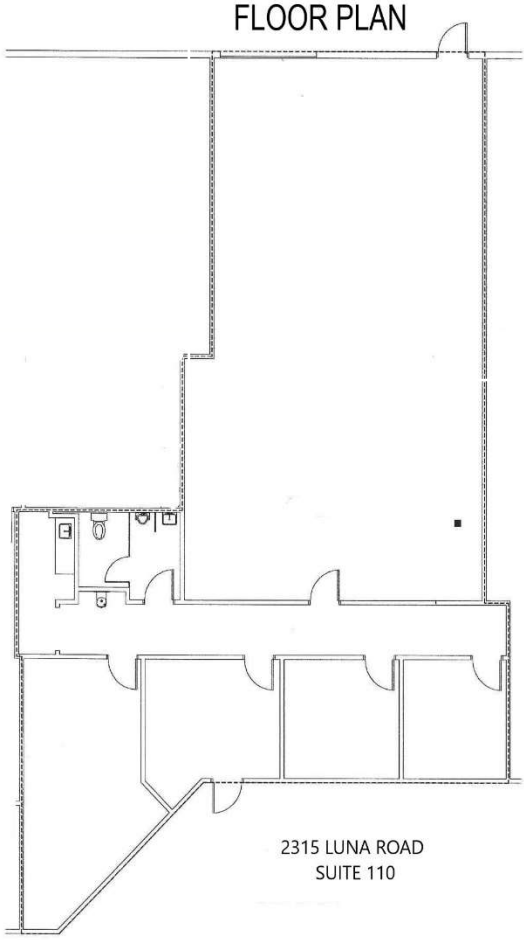
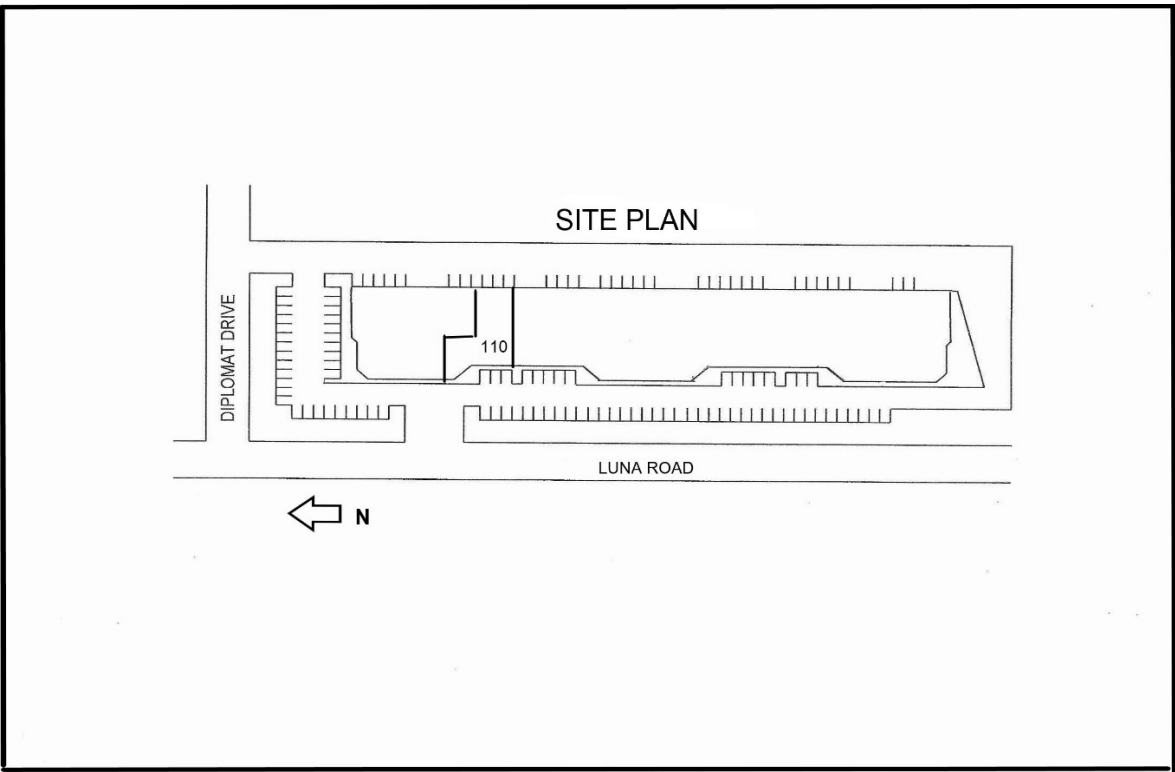
214-808-0020

HAMILL COMMERCIAL LLC

4101 McEWEN ROAD, SUITE 460

DALLAS, TEXAS 75244

gregg@hamillcommercial.com / hamillcommercial.com



Disclaimer: This material has been prepared by Hamill Commercial, LLC ("Broker") from sources deemed to be reliable and is for general information only. Broker does not guarantee, warrant or represent that the information contained in this document is correct. Any interested party should undertake their own inquiries as to the accuracy of the information. Broker disclaims unequivocally all inferred or implied terms, conditions and warranties arising out of this document and excludes all liability for loss and damages arising there from.