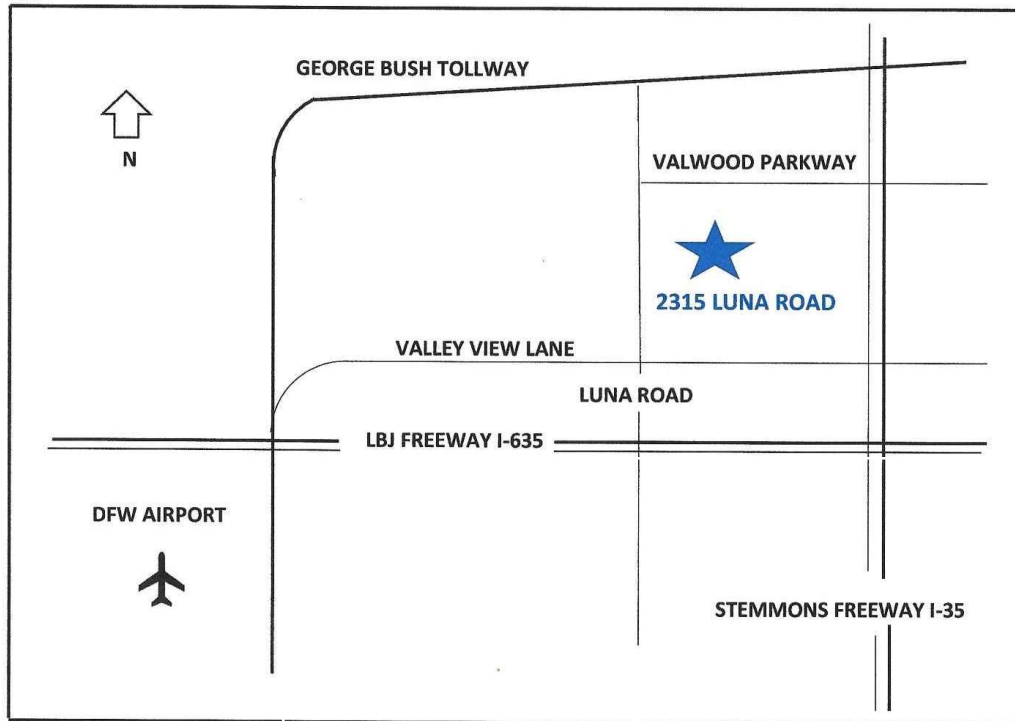


FOR LEASE

FLEX SPACE

2315 LUNA ROAD

SUITE 130
CARROLLTON, TEXAS



SEE SITE PLAN AND FLOOR PLAN ON REVERSE

FEATURES

- 3,210 SQUARE FEET (1,630 SF OFFICE AND 1,580 SF WAREHOUSE)
- HIGH VISIBILITY LOCATION
- FULL GLASS STOREFRONT
- INDIVIDUAL COMPANY SIGNAGE
- ONE (1) 10' x 10' GRADE LEVEL LOADING DOOR
- CONVENIENT TO D/FW AIRPORT, LOVE FIELD AND NORTH DALLAS

FOR INFORMATION CALL GREGG HAMILL

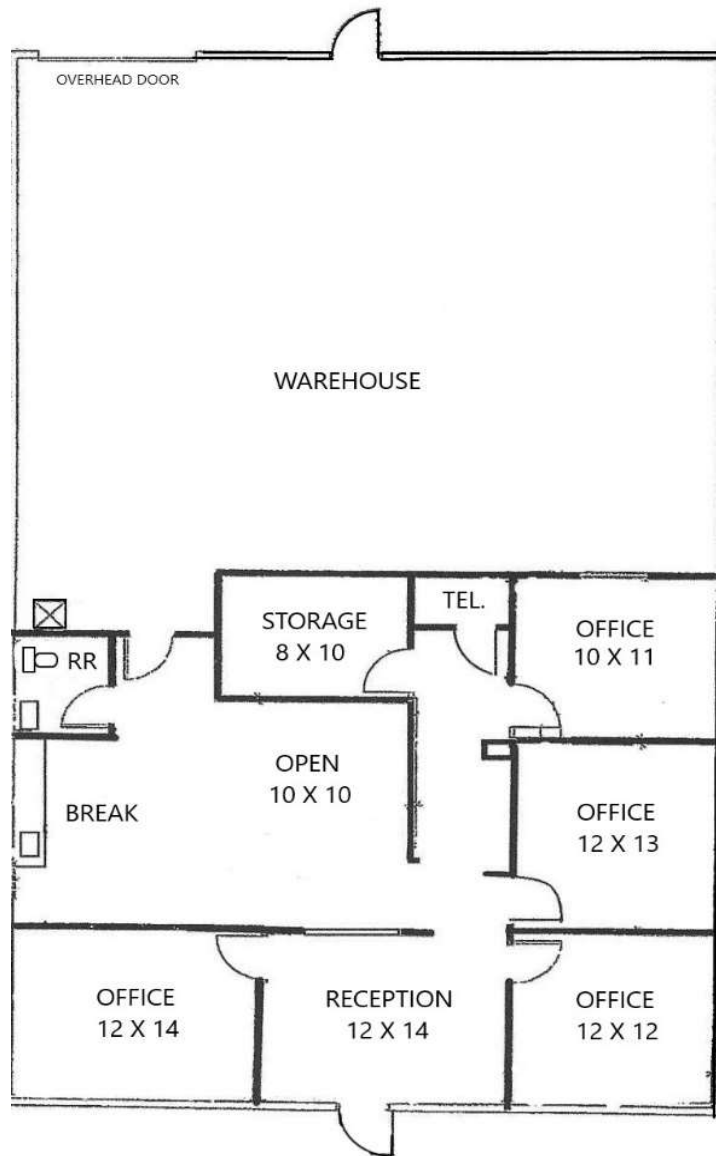
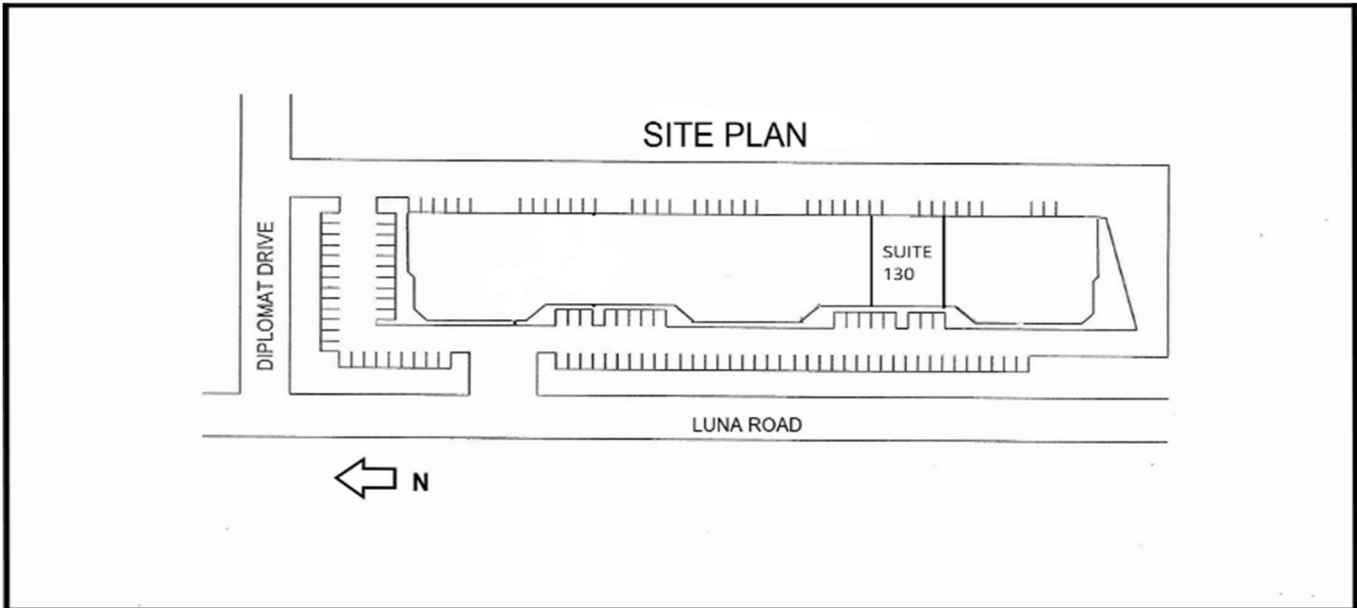
214-808-0020

HAMILL COMMERCIAL LLC

10711 PRESTON ROAD, SUITE 200

DALLAS, TEXAS 75230

gregg@hamillcommercial.com / hamillcommercial.com



Disclaimer: This material has been prepared by Hamill Commercial, LLC ("Broker") from sources deemed to be reliable and is for general information only. Broker does not guarantee, warrant or represent that the information contained in this document is correct. Any interested party should undertake their own inquiries as to the accuracy of the information. Broker disclaims unequivocally all inferred or implied terms, conditions and warranties arising out of this document and excludes all liability for loss and damages arising there from.