

M428 Block Firmware updates

From the IP address the firmware update settings cannot be adjusted

Printer Update Options

The printer can automatically check for updates from the Internet. If available, the printer can either install updates automatically or display an alert on the printer's control panel, giving you the option to accept or decline the updates. Without these updates, Web Services will not work.

Firmware updates can improve, enhance, or extend your printer's functionality and features, protect against security threats, and serve other purposes. HP recommends enabling automatic firmware updates.

Please note that this printer uses dynamic security measures to block cartridges using a non-HP chip, and periodic firmware updates will maintain the effectiveness of these measures and block cartridges that previously worked. The printer is intended to work only with new or reused cartridges that have a new or reused HP chip. For more information, go to www.hp.com/learn/ds

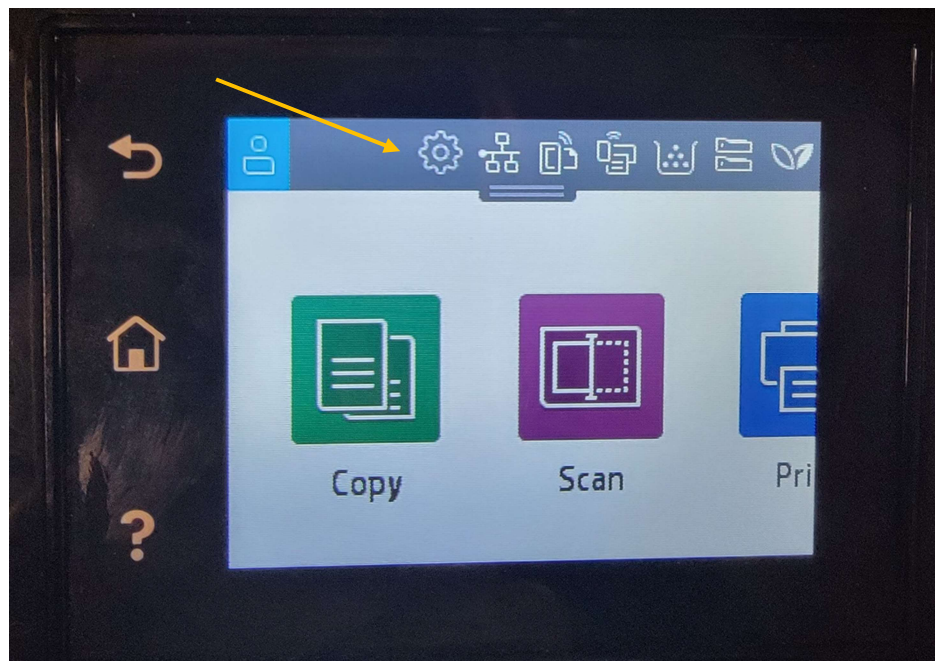
☐ Install updates automatically (required)

☒ Alert me when updates are available

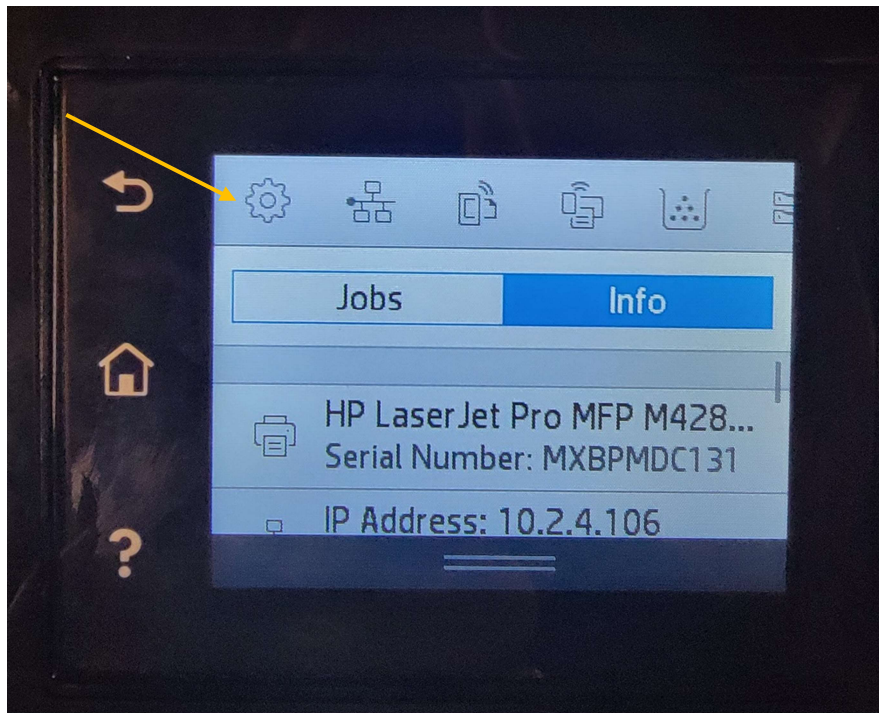
☐ Do not check for updates

Apply **Cancel**

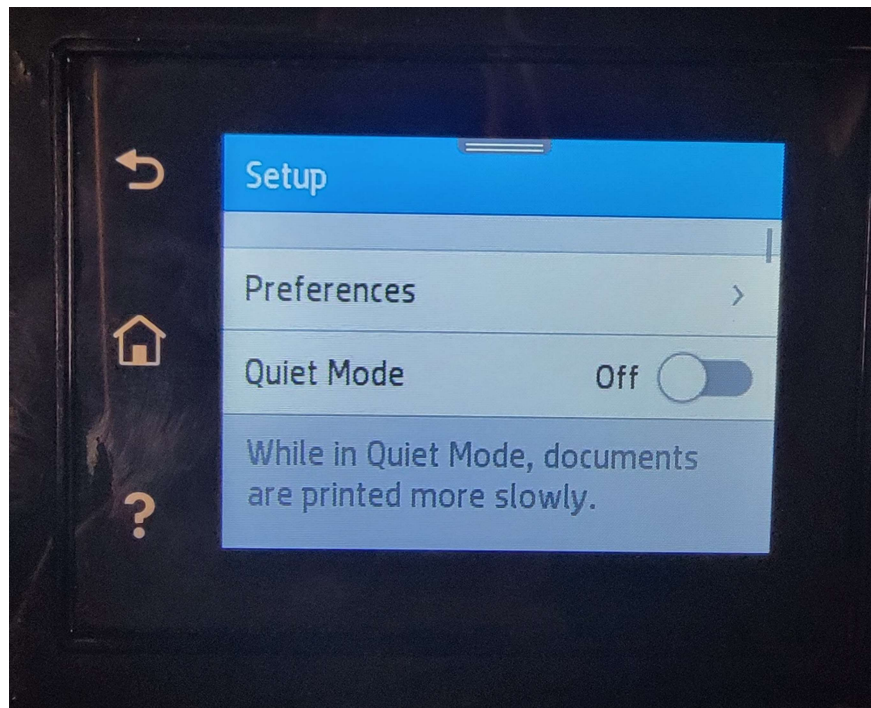
From the home screen click on the tool banner



Select the settings icon



Scroll down to printer maintenance



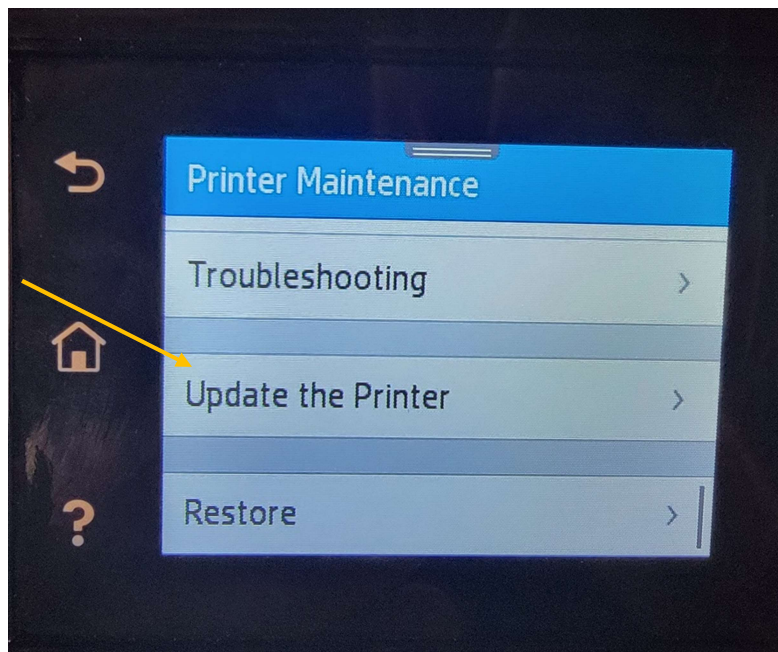
Select printer maintenance



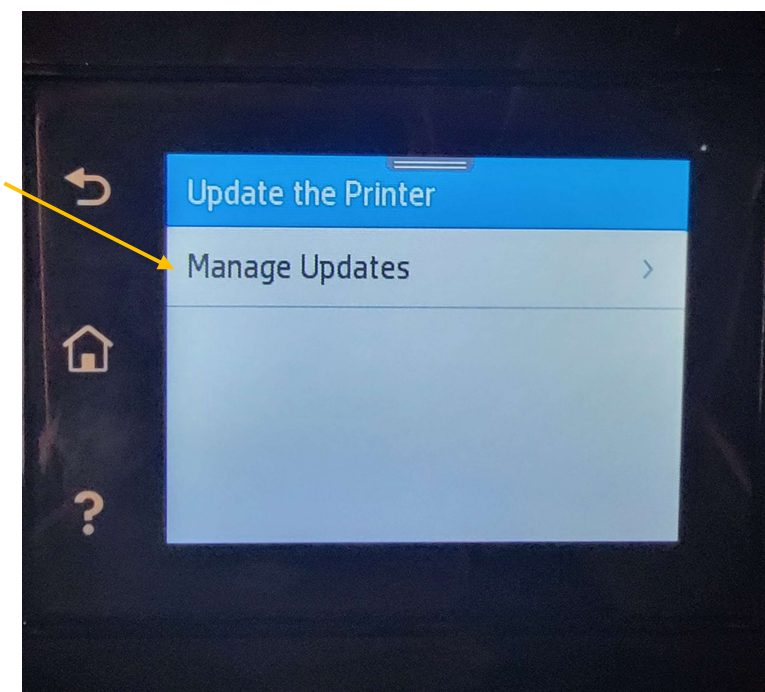
Scroll down to Update the Printer



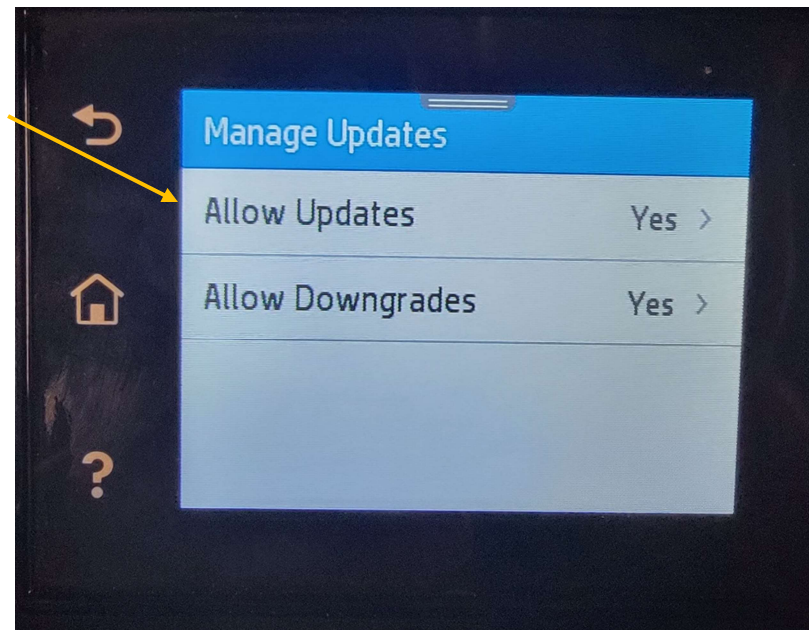
Select update the printer



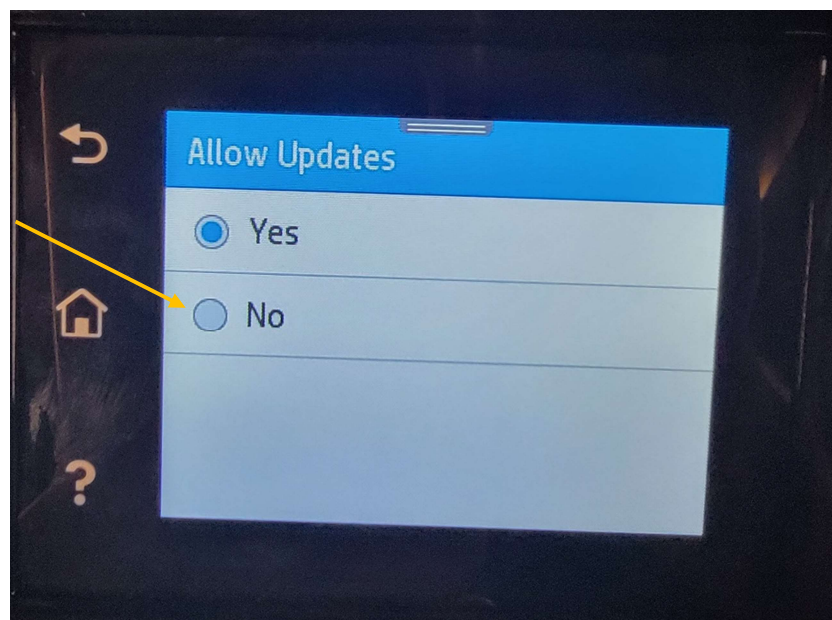
Select Manage Updates



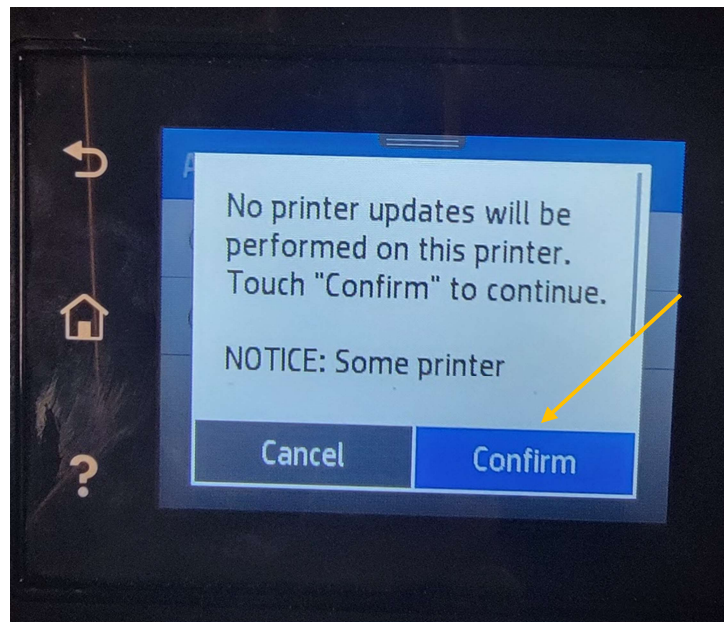
Select Allow Updates



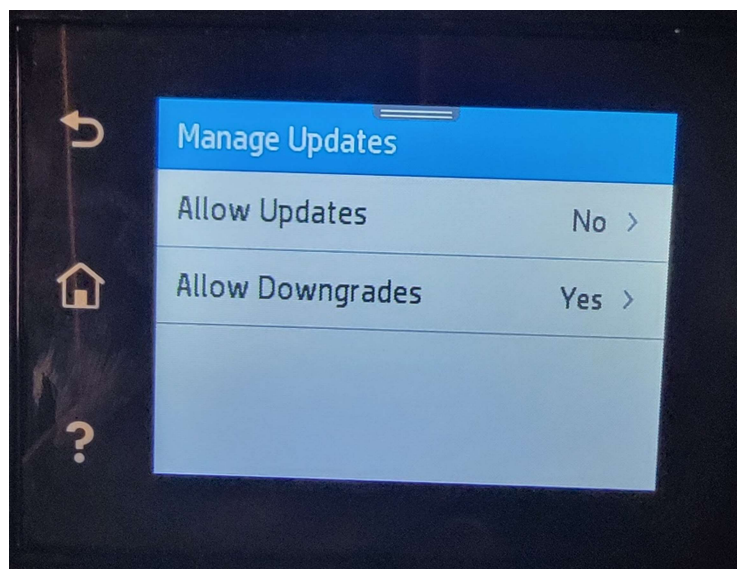
Select No



Select Confirm



Display setting should now look like below




IP address will now show the below.

Home **Scan** **Copy/Print** **Web Services** **Network** **Tools** **Settings**

TOOLS

- + Product Information
- + Reports
- + Utilities
- + Backup and Restore
- + Printer Restart
- Printer Updates
 - Firmware Updates

Printer Updates
Firmware Updates



Printer Update feature has been disabled!

Contact your administrator or the person who set up the printer.

If the process is repeated to allow updates the functionality will be fully restored on the IP Address

Printer Update Options

The printer can automatically check for updates from the Internet. If available, the printer can either install updates automatically or display an alert on the printer's control panel, giving you the option to accept or decline the updates.

Firmware updates can improve, enhance, or extend your printer's functionality and features, protect against security threats, and serve other purposes. HP recommends enabling automatic firmware updates.

Please note that this printer uses dynamic security measures to block cartridges using a non-HP chip, and periodic firmware updates will maintain the effectiveness of these measures and block cartridges that previously worked. The printer is intended to work only with new or reused cartridges that have a new or reused HP chip. For more information, go to www.hp.com/learn/ds

☒ Install updates automatically (recommended)

☐ Alert me when updates are available

☐ Do not check for updates

Apply **Cancel**