



Resetting the DR 360 DRUM Instructions

How to Reset Brother DR-360 Drum

Brother DR-360 Reset Instructions

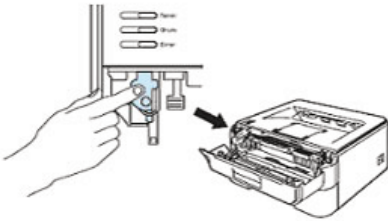
When you replace the drum unit with a new one, you need to reset the drum counter to 100% by completing the following steps.

For HL Printers HL-2140, HL-2150N, and HL-2170W

1 - Make sure that the printer is turned on and the **Drum LED** is blinking. Open the front cover.

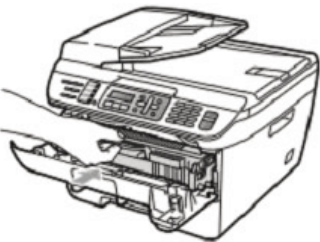


2 - Press and hold down the Go button for about 4 seconds until all the LEDs light up. Once all 4 LEDs are lit, release the go button and close the cover. Your drum is now reset.



For the Brother MFC-7340, Brother MFC-7345N, Brother MFC-7440N, Brother MFC-7840W and Brother DCP-7030, Brother DCP-7040

1 - Put the new drum unit and toner cartridge assembly in the Brother MFC or DCP printer.



2 - Press the **Clear/Back** button.

3 - Press **1** for **yes** to confirm new drum installed

4 - When the LCD shows **Accepted**, close the front cover

5 - Your drum is reset now reset.