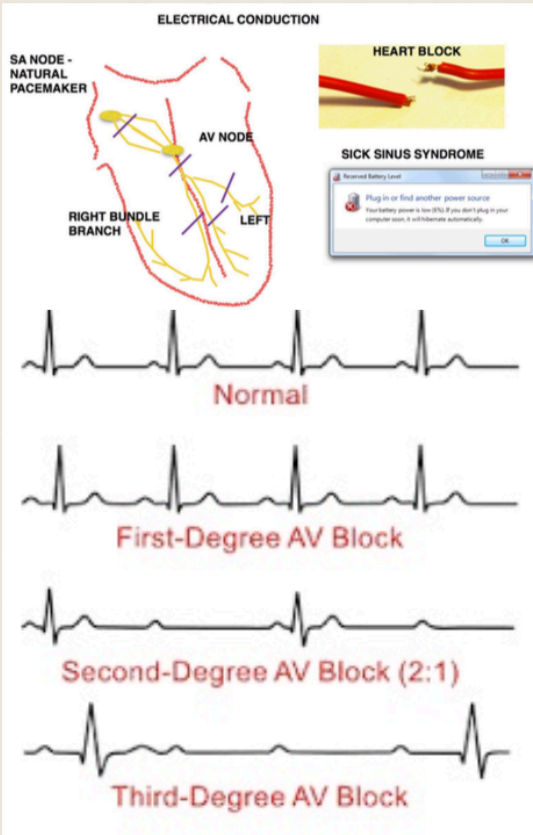


HEART BLOCKS

ADVANCED HEART BLOCKS ARE SERIOUS DISORDERS WITH HIGH RISK OF SUDDEN DEATH



Advanced Heart blocks cannot be reversed with medication - a common misconception

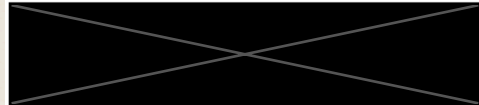
With pacemakers these patients have normal life expectancy

JOIN US / SEEK HELP



Arrhythmia support network & Rhythm clinic is first of its kind initiative to educate masses about their heart rhythm problems & overcome them. Any one can join & send any ECG or queries for opinion. We also have Sudden cardiac arrest, Atrial fibrillation support network with stroke & anticoagulation helpline working as sub committees. We have Pacemaker helpline in which pacemaker patient's can post their problems & take appointments.

HEART RHYTHM CLINIC



For appointment : Call +91 8800492549
pulseislife@gmail.com



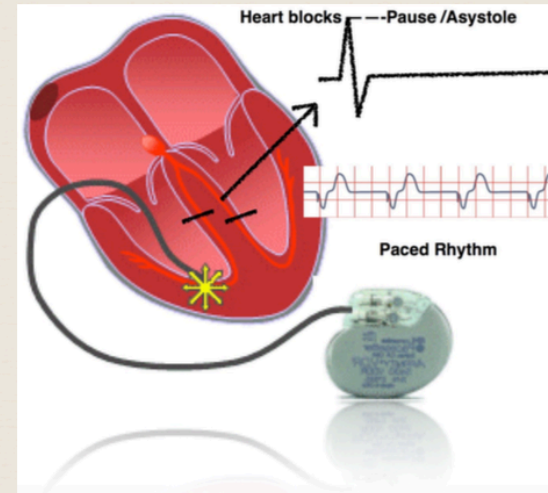
Dr Rohit Walia

MD,DNB,DM- Cardiology

Fellowship: Electrophysiology & Devices

Fellowship-Advanced Electrophysiology (Taiwan, USA, Germany)

PACEMAKER



Pacemaker is an electronic device implanted in body to regulate the heart beat. Pacemaker has a battery delivers electric stimuli over leads with electrodes in contact with heart

ARRHYTHMIA SUPPORT NETWORK : Pulse is Life



A-Fib, Sudden Cardiac Arrest Support Network: Act Fast Keep Beating



Pacemaker implantation procedure

SINGLE VS DUAL CHAMBER

Single chamber pacemaker will pace in single chamber of heart & consequently many patients may have exercise intolerance after the procedure. Dual chamber pacemakers pace upper & lower chamber of heart & will have near physiological heart function & exercise capacity.

Biventricular pacemaker or CRT

Patients with advanced heart block & ventricular dysfunction will need it to prevent further weakening of heart.

MRI VS NON MRI Conditioned Pacemakers

With MRI conditioned pacemakers patients can undergo MRI testing if required later in life. Before undergoing a MRI consult your electrophysiologist for programming before undergoing a scan & reprogramming after the scan.

RUN WITH HEART BLOCK

There are pacemakers to help patients with slow heart rates due to abnormal functioning of natural pacemaker (Sick Sinus Node) or conducting cables (heart blocks) to attain normal life style & life expectancy.

ADVANCED DEVICE CLINIC :

We deal with all aspects of pacing , defibrillation , heart failure management . We are equipped with technologies to help you achieve normal life again.



Pacemaker Xray



Pacemaker under the skin

LEADLESS PACEMAKER :

A pacemaker with size less than 1 rupee coin & without leads. Ideally suitable for patients requiring single chamber pacing like atrial fibrillation with complete heart block.



Leadless pacemaker less than a coin



Leadless pacemaker

REMOTE MONITORING & FOLLOW UP

Pacemaker patient's need to be on follow up to assess battery status , lead functions & when the battery is near depletion generally takes around 10 years to undergo battery replacement.



Remote monitoring



Pacemaker programmer

