



EXPANSION VALVES

Middle capacity

Type SCX

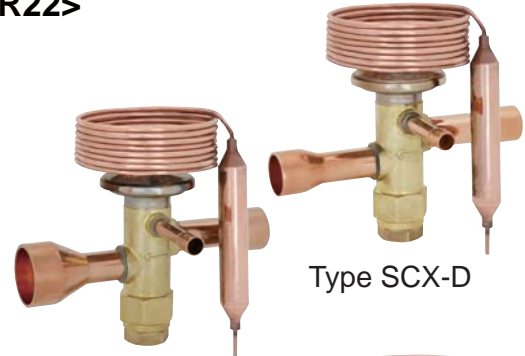
<Refrigerant for R134a,R404A,R407C,R410A,R22>

General description

- Application:
Chillers, Cold chain boxes,
Heat pump air conditioner,
Air conditioning, etc.

Features

- Compact size & Light weight.
- Broad temperature range.
Applicable for deep freezing, refrigeration and
air conditioning (single flow).
- Both Flare / Solder connection types are available.
- Adjustable static superheat setting.
- Suitable for refrigeration systems with hot gas defrosting.
- The same products can be used for R22 and R407C.



Type SCX-D

Type SCX-D



Type SCX-B

Specifications

- External equalizer type
- Max. working pressure : 3.0 MPa
- Airtight test pressure : 3.3 MPa
- Max. temperature of body and sensing bulb : 80 °C
- With superheat external adjust device.
- Adjustable range of static superheat :
1 to 7 °C at R22,R134a,R404A
1 to 5 °C at R407C,R410A
⌚ Increase approx. 0.045 MPa / rotation

Charge		A Zone	R Zone	F Zone	MOP (°C)	Temp. Condition
		Evaporating Temp. (°C)				Body Temp.: Ts, Sensing Bulb Temp.: Tb
SA	R22	-40 to 10	-	-	18	$T_s \geq T_b$
C		-	-40 to 0	-	-	$T_s \leq T_b$
SL		-	-	-60 to -25	-20	$T_s \geq T_b$
C	R134a	-30 to 10		-	-	$T_s \leq T_b$
SA	R404A	-40 to 10	-	-	18	$T_s \geq T_b$
C		-	-40 to 0	-	-	$T_s \leq T_b$
SL		-	-	-60 to -25	-20	$T_s \geq T_b$
SA	R407C	-40 to 10	-	-	18	$T_s \geq T_b$
C		-	-40 to 0	-	-	$T_s \leq T_b$
SA	R410A	-45 to 10	-	-	18	$T_s \geq T_b$
C		-	-40 to -10	-	-	$T_s \leq T_b$

Type number selection (1) (Specifications)

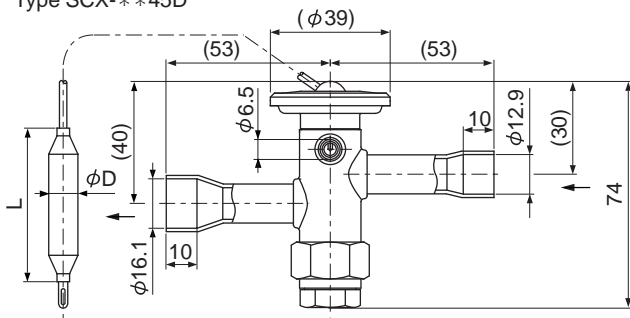
Refrigerant	Charge	Catalog No.		Capacity (U.S.R.T.) {kW}		Connection			Capil. Tube Length (mm)	Wt. (kg)		
				A,R Zone	F Zone	Inlet	Outlet	Equalizer				
		Type	Model	C.T. 38°C	C.T. 38°C						E.T. -5°C	E.T. -30°C
R22	SA For Air Conditioning (A Zone) Evaporating Temp. (-40 to 10°C)	SCX-	0645D[B]HSA	5.78 {20.3}	—	—	1/2" Solder(D) [1/2" Flare(B)]	5/8" Solder(D) [5/8" Flare(B)]	1/4" Solder(D) [1/4" Flare(B)]	φ 2.4 × 1500	0.31 (SCX-**45D) 0.39 (SCX-**45B) 0.32 (SCX-**57D)	
			0845D[B]HSA	8.05 {28.3}								
			1057DHSA	10.1 {35.6}								
			1257DHSA	12.1 {42.6}								
			1457DHSA	14.4 {50.5}								
	C For Refrigeration (R Zone) Evaporating Temp. (-40 to 0°C)		0645D[B]HC	5.78 {20.3}	—	—	1/2" Solder(D) [1/2" Flare(B)]	5/8" Solder(D) [5/8" Flare(B)]				
			0845D[B]HC	8.05 {28.3}								
			1057DHC	10.1 {35.6}								
			1257DHC	12.1 {42.6}								
			1457DHC	14.4 {50.5}								
	SL For Freezing (F Zone) Evaporating Temp. (-60 to -25°C)		0645D[B]HSL	—	—	—	3.25 {11.4}	1/2" Solder(D) [1/2" Flare(B)]				5/8" Solder(D) [5/8" Flare(B)]
			0845D[B]HSL				4.53 {15.9}					
			1057DHSL				5.70 {20.0}					
			1257DHSL				6.83 {24.0}					
			1457DHSL				8.08 {28.4}					
R404A	SA For Air Conditioning (A Zone) Evaporating Temp. (-40 to 10°C)	0445D[B]USA	3.65 {12.8}	—	—	1/2" Solder(D) [1/2" Flare(B)]	5/8" Solder(D) [5/8" Flare(B)]					
		0545D[B]USA	5.08 {17.9}									
		0657DUSA	6.38 {22.5}									
		0857DUSA	7.66 {26.9}									
		0957DUSA	9.06 {31.9}									
	C For Refrigeration (R Zone) Evaporating Temp. (-40 to 0°C)	0445D[B]UC	3.65 {12.8}			—	—	1/2" Solder(D) [1/2" Flare(B)]	5/8" Solder(D) [5/8" Flare(B)]			
		0545D[B]UC	5.08 {17.9}									
		0657DUC	6.38 {22.5}									
		0857DUC	7.66 {26.9}									
		0957DUC	9.06 {31.9}									
	SL For Freezing (F Zone) Evaporating Temp. (-60 to -25°C)	0445D[B]USL	—			—	—	1.92 {6.74}	1/2" Solder(D) [1/2" Flare(B)]	5/8" Solder(D) [5/8" Flare(B)]		
		0545D[B]USL						2.67 {9.39}				
		0657DUSL						3.36 {11.8}				
		0857DUSL						4.03 {14.2}				
		0957DUSL						4.76 {16.7}				

Type number selection (2) (Specifications)

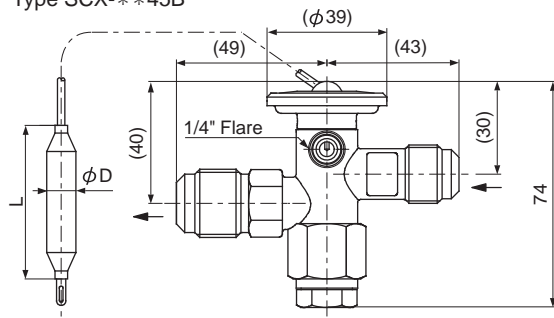
Refrigerant	Charge	Catalog No.		Capacity (U.S.R.T.) {kW}		Connection			Capil. Tube Length (mm)	Wt. (kg)
				A,R Zone	F Zone	Inlet	Outlet	Equalizer		
		Type	Model	C.T. 38°C	C.T. 38°C					
				E.T. -5°C	E.T. -30°C					
R134a	C For Refrigeration (R Zone) Evaporating Temp. (-30 to 10°C)	SCX-	0545D[B]MC	4.76 {16.7}	—	1/2" Solder(D) [1/2" Flare(B)]	5/8" Solder(D) [5/8" Flare(B)]	1/4" Solder(D) [1/4" Flare(B)]	φ 2.4 × 1500	0.31 (SCX-**45D) 0.39 (SCX-**45B) 0.32 (SCX-**57D)
			0745D[B]MC	6.62 {23.3}						
			0857DMC	8.32 {29.3}						
			1057DMC	9.98 {35.1}						
			1257DMC	11.8 {41.5}						
R407C	SA For Air Conditioning (A Zone) Evaporating Temp. (-40 to 10°C)		0645D[B]HSA	5.95 {20.9}	—	1/2" Solder(D) [1/2" Flare(B)]	5/8" Solder(D) [5/8" Flare(B)]			
			0845D[B]HSA	8.29 {29.1}						
			1057DHSA	10.4 {36.6}						
			1257DHSA	12.5 {43.9}						
			1457DHSA	14.8 {52.0}						
	C For Refrigeration (R Zone) Evaporating Temp. (-40 to 0°C)	0645D[B]HC	5.95 {20.9}	—	1/2" Solder(D) [1/2" Flare(B)]	5/8" Solder(D) [5/8" Flare(B)]				
		0845D[B]HC	8.29 {29.1}							
		1057DHC	10.4 {36.6}							
		1257DHC	12.5 {43.9}							
		1457DHC	14.8 {52.0}							
R410A	SA For Air Conditioning (A Zone) Evaporating Temp. (-45 to 10°C)	0645D[B]VSA	6.38 {22.4}	—	1/2" Solder(D) [1/2" Flare(B)]	5/8" Solder(D) [5/8" Flare(B)]				
		0945D[B]VSA	8.87 {31.2}							
		1157DVSA	11.2 {39.2}							
		1357DVSA	13.4 {47.0}							
		1657DVSA	15.8 {55.6}							
	C For Refrigeration (R Zone) Evaporating Temp. (-40 to -10°C)	0645D[B]VC	6.38 {22.4}	—	1/2" Solder(D) [1/2" Flare(B)]	5/8" Solder(D) [5/8" Flare(B)]				
		0945D[B]VC	8.87 {31.2}							
		1157DVC	11.2 {39.2}							
		1357DVC	13.4 {47.0}							
		1657DVC	15.8 {55.6}							

Dimensions

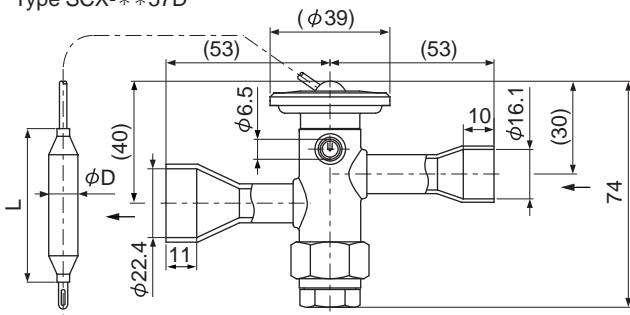
Type SCX-**45D



Type SCX-**45B



Type SCX-**57D

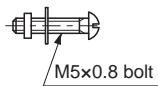
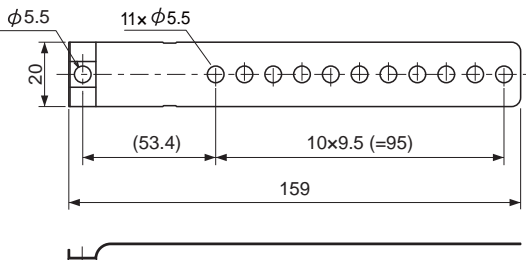


	D	L
SA	12.7	80
C	9.5	50
SL	12.7	80

Unit:mm

Accessory

- Sensing Bulb Mounting Band



Unit:mm

NOTES FOR SAFETY

Failure to read and follow all instruction carefully before installing or operating the product could cause personal injury and/or property damage.

Specifications are subject to change without notice.