

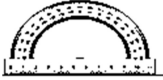


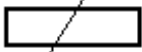


**GDM 250X310**  
**MANUAL DOUBLE MITER**  
**BAND SAW MACHINE**

\*Photo may feature machine with optional accessories

GDM 250X310 MANUAL DOUBLE MITER BAND SAW MACHINE

## CUTTING CAPACITY

	0°	45°	60°	-45°
	250 mm	190 mm	120 mm	180 mm
	250 mm	190 mm	120 mm	150mm
	250 x 310 mm	190 x 250 mm	120 x 140 mm	100 x 250 mm

## TECHNICAL SPECIFICATIONS

<b>Main Motor</b>	: 1,5kW
<b>Gearbox</b>	: Worm Gear Reducer PMRV 063
<b>Hydraulic Motor</b>	: 0,37kW
<b>Hydraulic Tank Capacity</b>	: 12 lt
<b>Coolant Motor</b>	: 0,12kW
<b>Coolant Tank Capacity</b>	: 20lt
<b>Blade Speed</b>	: 25 -90 m/min
<b>Blade Dimensions</b>	: 3.150 x 27 x 0,9 mm
<b>Machine Weight</b>	: 480kg
<b>Machine Dimensions</b>	: 750 x 1650 x 1150 mm
<b>Table Height</b>	: 730 mm

## STANDARD ACCESSORIES

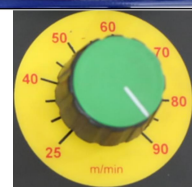
### ***Manuel Control Panel***

Only control panel with buttons  
Easy control



### ***Inverter***

Provides to adjust blade speed up to  
workpiece diameter, thickness and hardness.

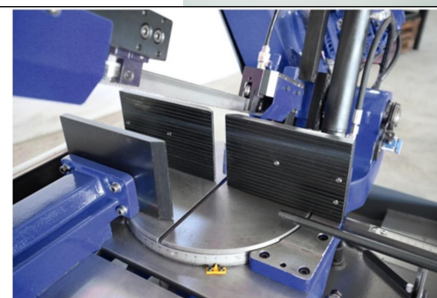


### ***Swarf Brush***

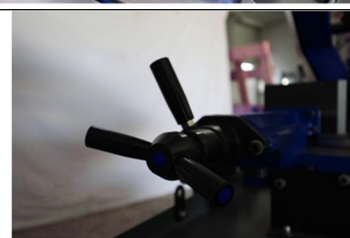
Removes swarfs to keep clean the  
wheels and blade.



### ***Double Miter***



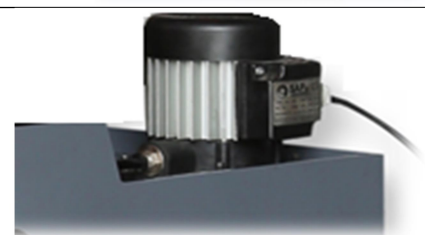
### ***Fast Clamping Vise***



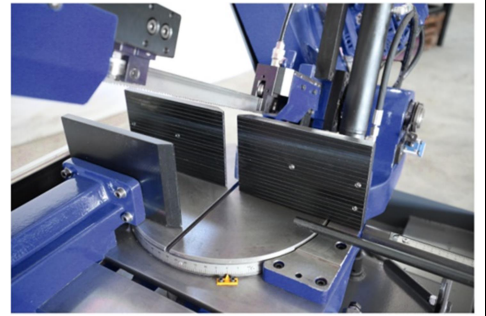
### ***Manometer***



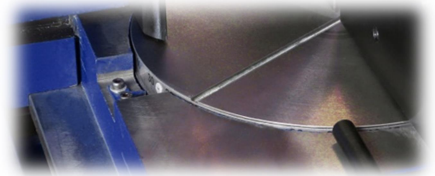
### ***S.A.P (Italy) Brand Coolant Pump***



***Rotating Vise Flange***



***Easy Readable Angle Ruler***



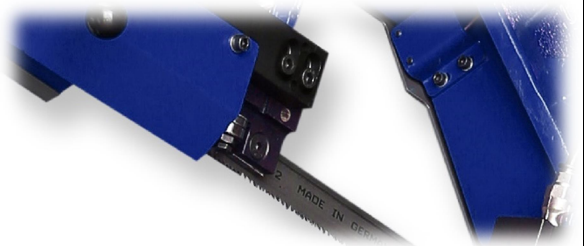
***60 cm Long Material Stopper System***



***Adjustable Bow Down Speed***



***Blade Bedding with Carbide and Bearings***



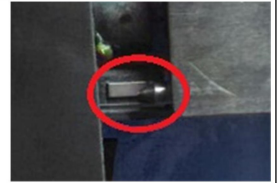
***Hydromechanical Blade Tension***



***Bow Cover Switch***



***Blade Tension Switch***



***Levelling Foot Leg***



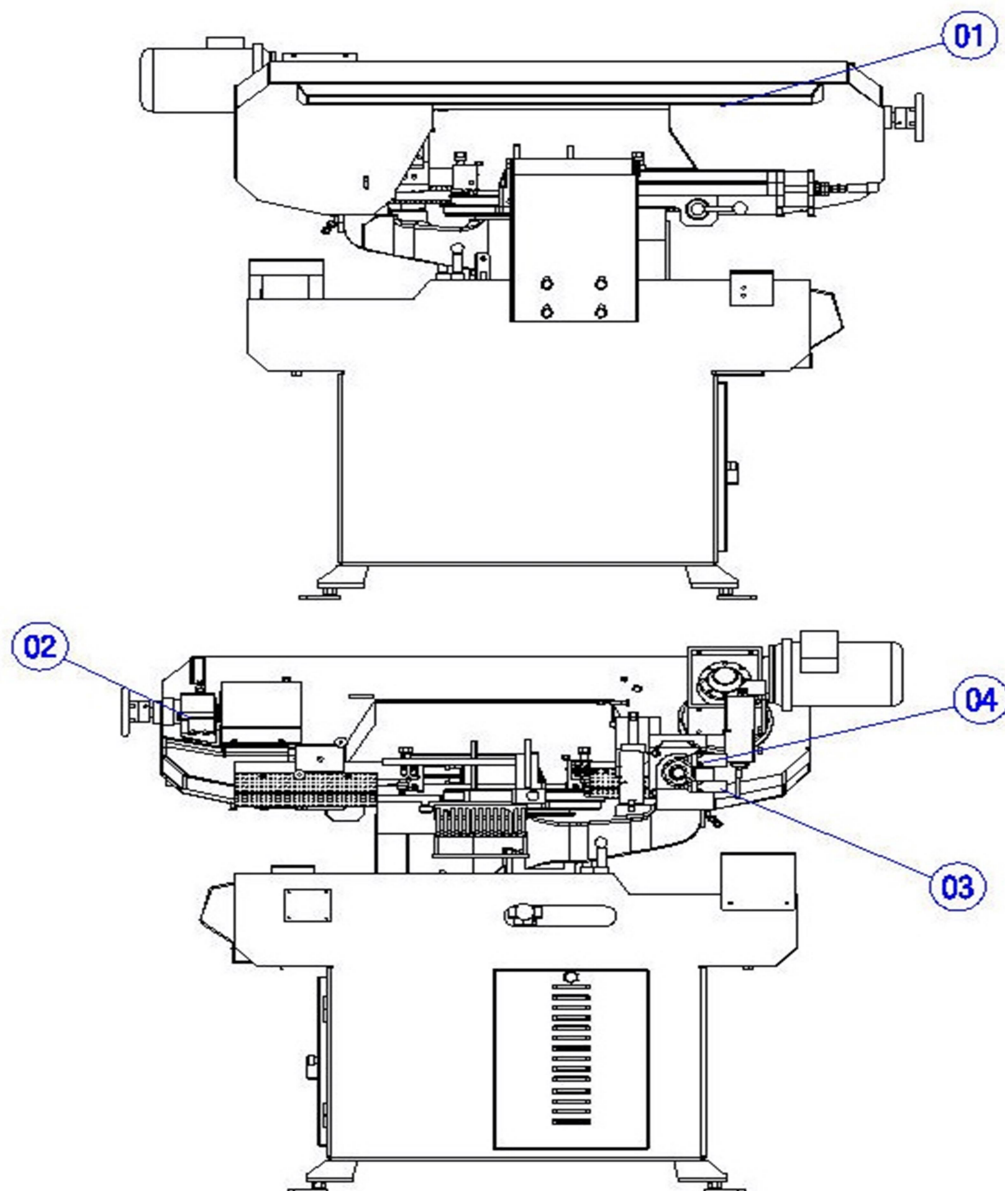
***Wheel Bedding with Bearing***



***Automatic Stop When;***

- The covers are open
- Blade is broken
- Blade tension is low

## SAFETY EQUIPMENTS AND ASSIGNMENTS



1	Lid Safety Switch
2	Break-off Switch
3	Down Limit Switch
4	Top Limit Switch

## **TERMS**

***Delivery (After Receipt of written PO) :***

***Type of Delivery*** : **Exwork**

## **WARRANTY CONDITIONS**

The machine is under the warranty of SAPHIR For a period of 2 years for mechanical parts, 1 year for electric and electronic parts from the date of purchase. This warranty is subject to all of the terms and conditions listed below:

1. This warranty is valid only if the **Warranty Registration Form** is filled in and returned to the manufacturer or its authorized dealer within **two months after the** date of purchase.
2. The obligation of the manufacturer under this warranty shall be limited to repairing or replacing components which proves defective and which our examination shall disclose to our satisfaction to be defective.
3. Defects due to improper operation, misuse, neglect, alteration, irregular voltage conditions, inadequate wiring, improper installation (**all electrical and electronic components, all electrical motors etc.**) and due to accidents or any damage caused by transportation, flood, fire, natural disasters, theft are not included in this warranty and are strictly the responsibility of the purchaser.
4. Any part returned to SAPHIR or its authorized dealer under the terms of this warranty shall be on the basis of transportation charges prepaid by the customer and must be accompanied by a record of the machine model code and serial number.
5. This warranty does not apply to the following components; band saw blade, blade pressure pads or brackets and blade guide bearings **because of being consumables**.
6. Manufacturer and authorized dealer cannot be blamed within maximum repair period for the material or moral damage. Apart from that act the period as Warranty Conditions and there will not be done any retroactive requirement.



**SAPHIR BANDSAW MACHINES**  
**Hanlı Merkez Mah. Hatip Sok. No:32**  
**Arifiye/Sakarya/TURKEY**  
**Phone: +90 264 276 59 16**  
**Fax: +90 264 276 59 19**

**GDM 250X310 MANUAL DOUBLE MITER BAND SAW MACHINE**

[www.saphirbandsaw.com](http://www.saphirbandsaw.com)  
[sales@saphirbandsaw.com](mailto:sales@saphirbandsaw.com)