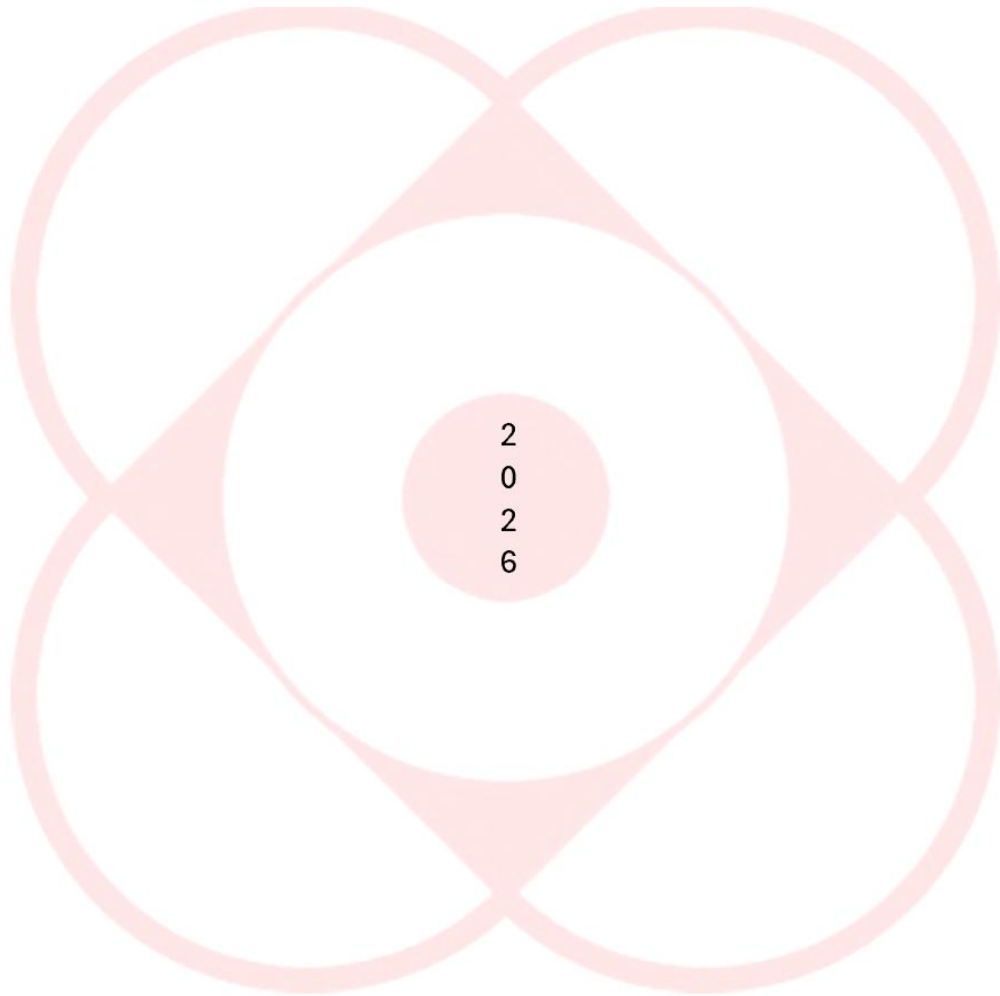


2026 CNC MACHINE TOOLS & ACCESSORIES



Wacom Corporation



MADA Grinders



Digital Profile Grinder



High Precision Forming Grinders



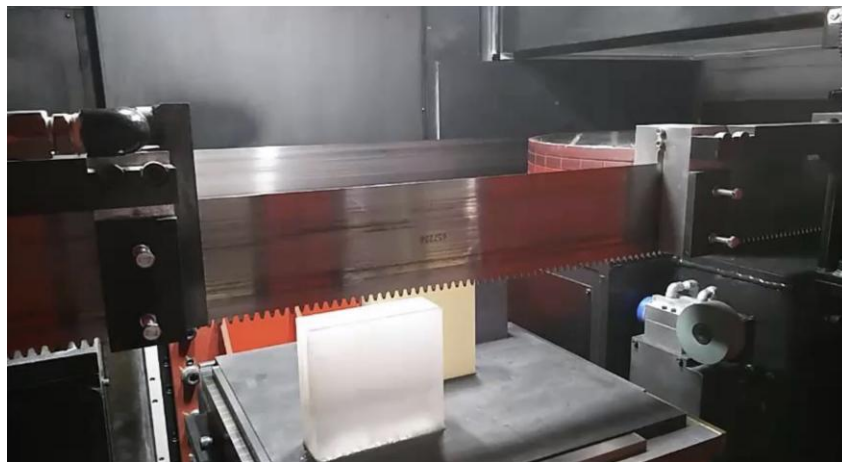
Rotary Surface Grinders



Ultra High Precision Forming Grinders



MADA **Diamond Band SAW** **DBSAW 500 DBSAW 1000**



Quartz



Ceramics



Silicon



Carbon



Sapphire





SL SERIES



5X SERIES

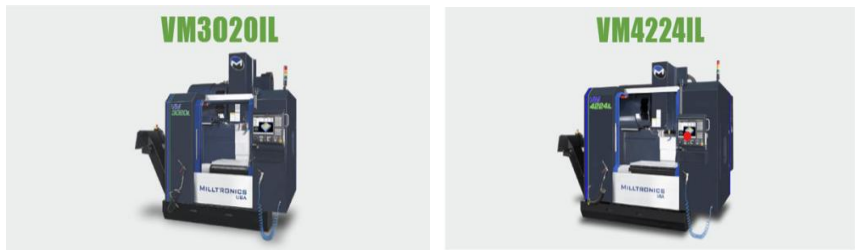


TOOL ROOM MILLS





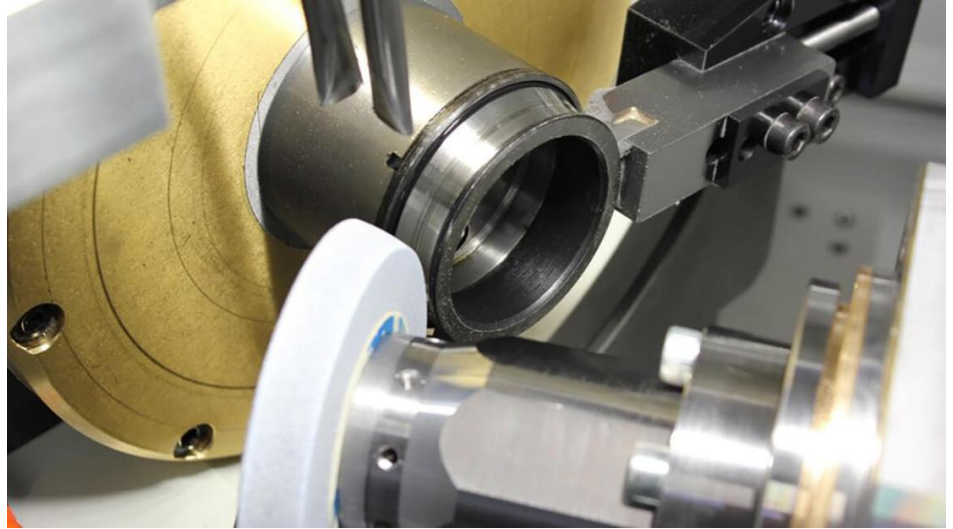
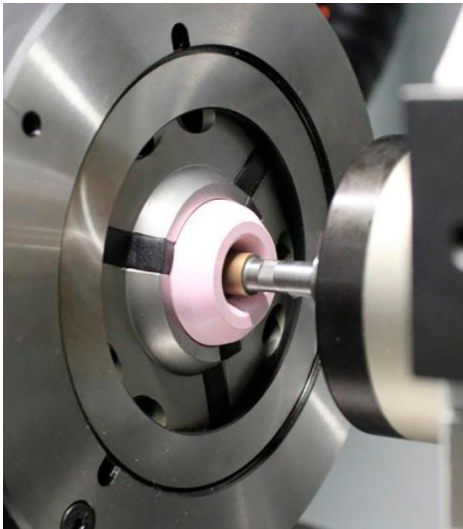
VM SERIES





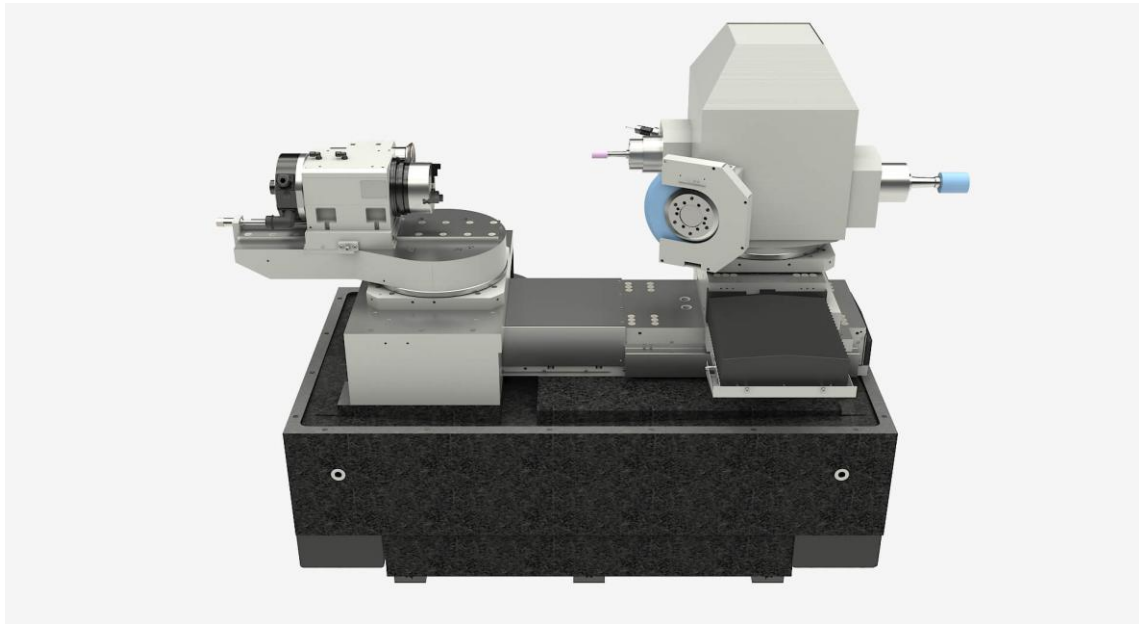
IRD

INTERNAL, EXTERNAL AND RADIUS GRINDING MACHINE





ID, OD and radius grinding machine



Technical data

		IRD-200	IRD-400	IRD-400 Eco
Max. internal grinding diameter	in	3.9	7.8	7.8
Max. internal grinding length	in	3.9	7.8	7.8
Max. workpiece swing diameter	in	8.4	14	11
Max. workpiece length incl. clamping system	in	7.8	15.74/ 11	15.74/ 11
Max. workpiece weight incl. clamping system	lb/ft-lb	88/33	175/70//400/220	175/70
B0 axis swivelling angle	°	+91°/-15°	+91°/-15°	+91°/-15°
X and Z axis stroke	in	15.7/7.8	16.7/18.7	16.7/18.7





LG

VERSATILE AND HIGH-SPEED PRODUCTION GRINDING MACHINE

ULTRA PRECISION O. D. GRINDING MACHINE



Technical data

		LG-400	LG-600	LG-1000
Max. distance between centers	in	15.74	23.62	39.37
Max. diameter to be ground	in	11.41	11.41	11.41
Max. weight between centers	lb	110	110	176
Max. grinding wheel diameter	in	20	20	20
Max. wheel peripheral speed	sfpm	27560	27560	27560





Estarta

CENTERLESS GRINDING MACHINE



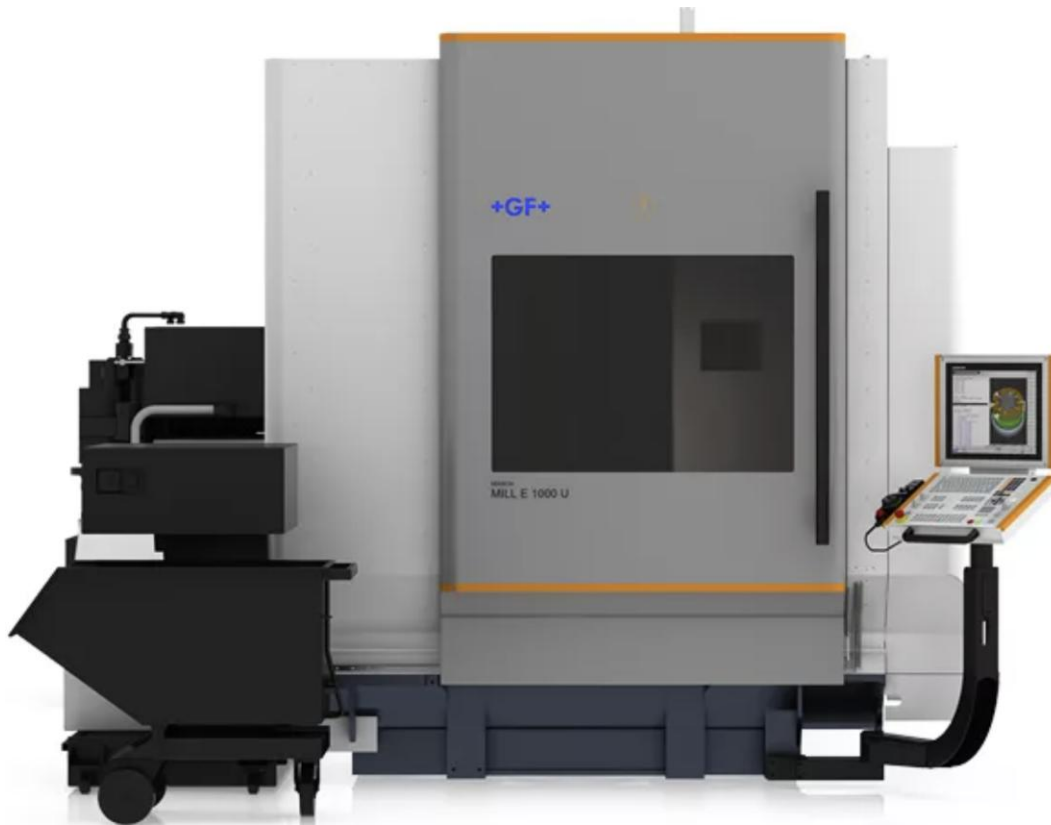
Technical data

		Estarta-650	Estarta-400	Estarta-250	Estarta-175
Max. workpiece diameter	in	9.8	5.9	5.90	2.76
Grinding wheel diameter (OD x width)	in	Ø25.6 x 25.6	Ø25.6 x 15.75	Ø26 x 9.8	Ø20 x 6.9
Max. grinding wheel peripheral speed	sfpm	23620	23620	23620	23620
Regulating wheel diameter (OD x width)	in	Ø15.74 x 25.59	Ø15.74 x 15.74	Ø16 x 9.84	Ø12 x 6.88
Main motor	hp	73.75-147.51	49.61-120.69	29.5-49.6	14.75-29.5
Net weight	lb	36370	27550	26450	17630





Mikron MILL E 1000/1400/1900 U



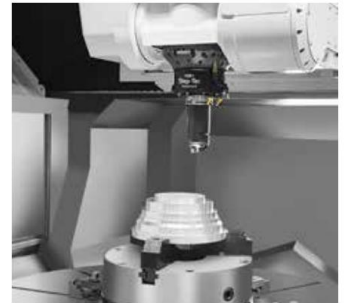
Stiff machine construction



Optimal accessibility



Pallet changer 3 positions



Simultaneous turning

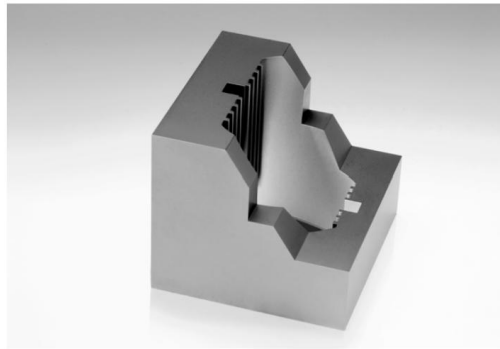




AgieCharmilles CUT E series



WIRE EDM





AgieCharmilles FORM E Series

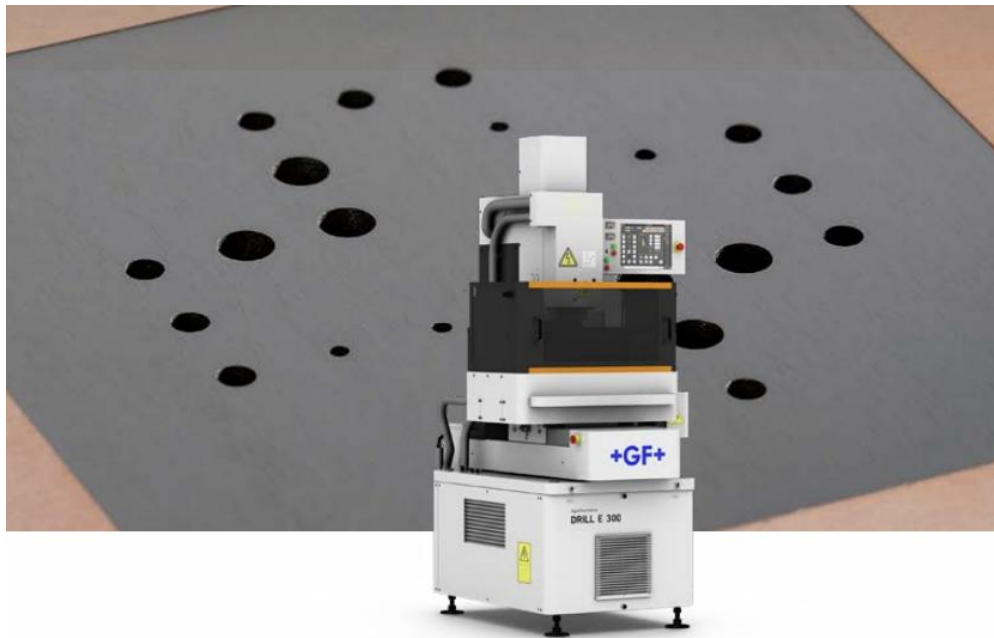


SINKER EDM





AgieCharmilles DRILL E 300



Technical data

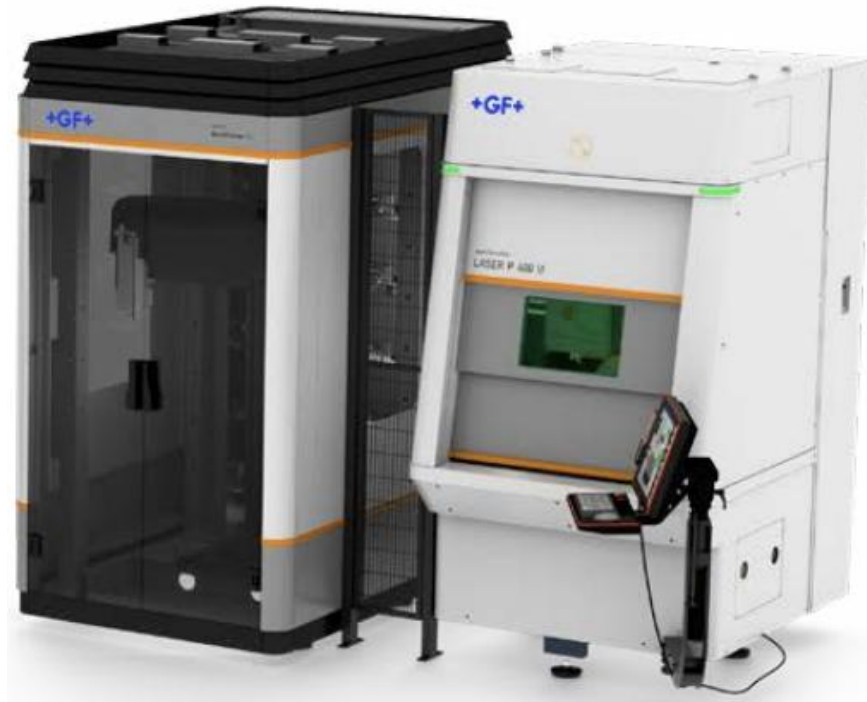
DRILL E 300

Electrode diameter *	mm (in)	0.30 up to 3 (0.012 up to 0.12)
Maximum drilling depth	mm (in)	200 (7.78)
Maximum workpiece weight	kg (lb)	300 (660)
Travel paths of axes X, Y and Z	mm (in)	300 x 200 x 300 (11.8 x 7.8 x 11.8)
Work table size (width x length)	mm (in)	400 x 300 (15.7 x 11.8)
Rotating spindle	rpm	57.5
Travel path of the electrode guide	mm (in)	100 (3.9)
Heavy duty generator	A	30
Dielectric volume	l (us gal)	16 (4.2)
Mains connections	V, Hz	3 x 400, 50/60
Maximum power consumption	kW	5
Display	TFT	Touch screen, 12.1"
Pump operating pressure	bar	70
Machine dimensions	mm (in)	1345 x 940 x 2040 (52.9 x 37 x 80.3)
Total weight of the machine	kg (lbs)	870 (1918)





AgieCharmilles Laser





Laser Texturing

New product design dimension

The femto laser possibilities



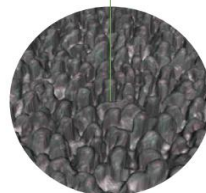
Ripples

New design possibilities with femto laser, colors by light diffraction.



Efficient

Femto second laser allows burr free engravings, limiting Laser post treatment operations



Spikes

New capability with femto laser, deep blacks texture (light trapping)



Standard and cost

effective fiber laser solution (Nano second)



emco



HIGH PRECISION TURNING CENTERS



MULTI-TASKING MILLTURN LATHES



emco



UNIVERSAL 5-AXIS MACHINING CENTERS



5-AXIS TRAVELING COLUMN MACHINING CENTERS

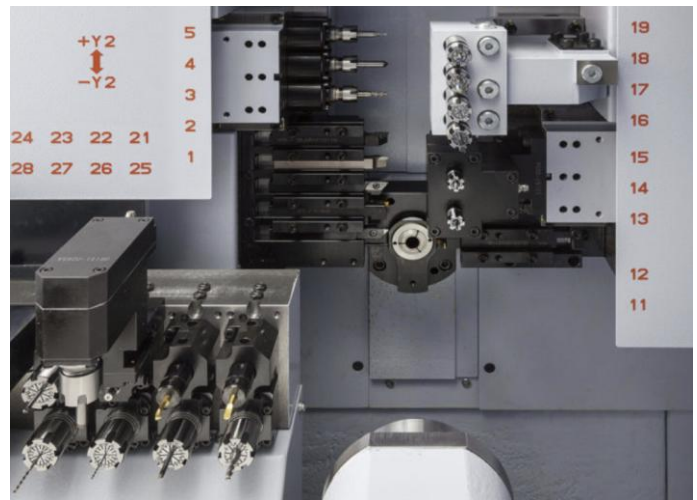


UNIVERSAL GANTRY MILLS



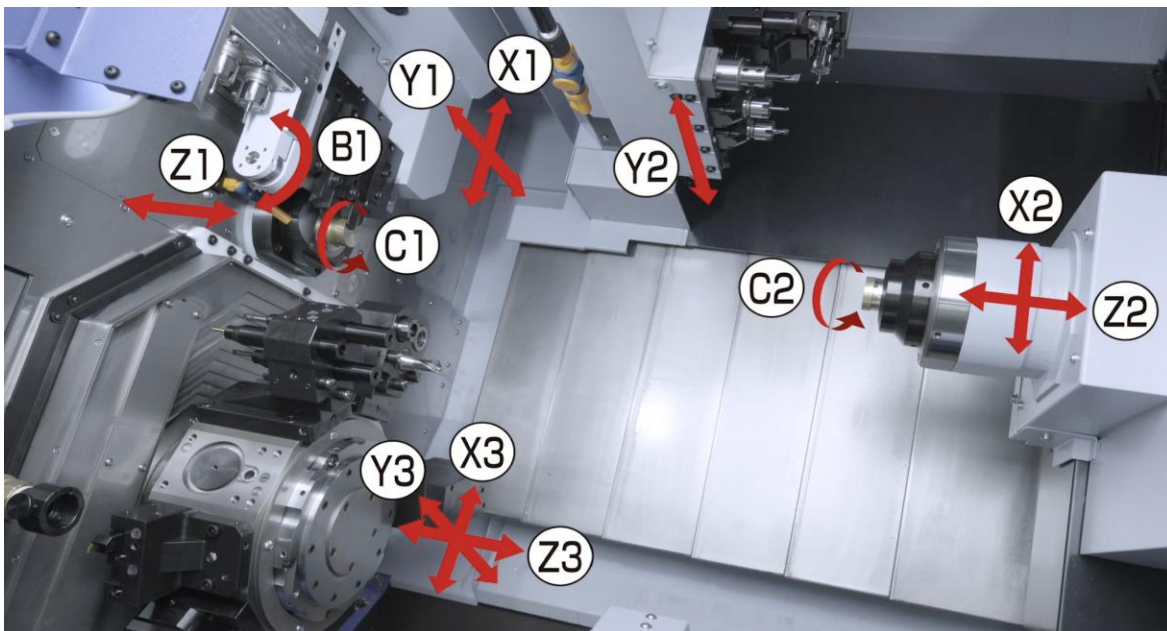
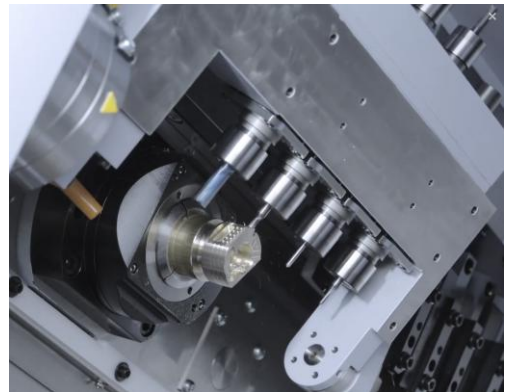


Swiss-type Automatic Lathe





Swiss-type Automatic Lathe



WIA MACHINE TOOLS

KF5 Series

HYUNDAI WIA Vertical Machining Center

State-of-the-art Vertical Machining Center with High-speed and large work space. The Vertical Machining Center KF5 Series, designed by Hyundai WIA with years of expertise and the latest technology, maximizes productivity while maintaining rigidity and accuracy.



KF7300/5A

HYUNDAI WIA High Precision 5-axis Vertical Machining Center

The Vertical Machining Center KF-5A Series designed by Hyundai WIA with years of expertise and the latest technology, ensures performance requirements of the mold industry. In addition, KF-5A Series can process products of various shapes with 5-axis table design.



LM2200TTSYY

HYUNDAI WIA CNC Multi Axis Turning Center

The CNC Turning Center LM2200TTSYY/C, designed by Hyundai WIA with years of expertise and the latest technology, is designed to maximize productivity by utilizing twin spindles and twin turrets.



SE2600 Series

High Speed, Rigidity and Productivity CNC Turning Center for next generation

The CNC Turning Center SE2600 Series, designed with HYUNDAI WIA's engineering expertise to maximize productivity by enhancing rigidity and accuracy of machining.



WIA MACHINE TOOLS

XM2600/3100 Series

6/7/9-axis Multi-tasking Machine

Multitasking Machine **XM2600/3100 Series**, designed by HYUNDAI WIA with years of expertise and the latest technology, is designed to maximize productivity by utilizing mill head and lower turret.

KBN1300C

HYUNDAI WIA Heavy Duty Boring Machine

The heavy duty boring machine **KBN1300C**, designed by Hyundai WIA with years of expertise and the latest technology, provides high performance and maximum productivity.



HS4000/5000 II

State-of-the-Art Mechanism Design, High-Precision Structure



HS6300/8000 II

Next Generation High Efficiency Machining Center



HS10000

Next Generation High-Performance Machining Center



F960B

4WAY 10 faces Box Guide design



KF5700B II Series

Vertical Machining Center for Heavy Duty Cutting



KF6700B II Series

Vertical Machining Center for Heavy Duty Cutting

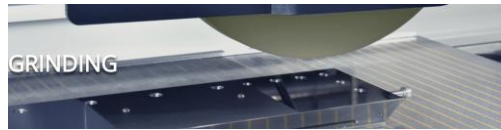


KF7700B II Series

Vertical Machining Center for Heavy Duty Cutting



CHEVALIER
We shape your ideas.™



Rotary Surface Grinders



Double Column Grinders



Surface & Profile CNC Grinders



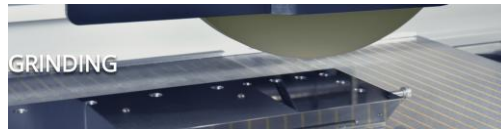
Double-Sided Fine Grinders



5-Axis Surface & Profile CNC Grinding Center



CHEVALIER
We shape your ideas.™



Automatic Surface Grinders

Manual Surface Grinders

Cylindrical Grinders



Multi-Axis Turning/Milling Lathes

Vertical Turning Lathes

Heavy-Duty Horizontal Turning Lathes



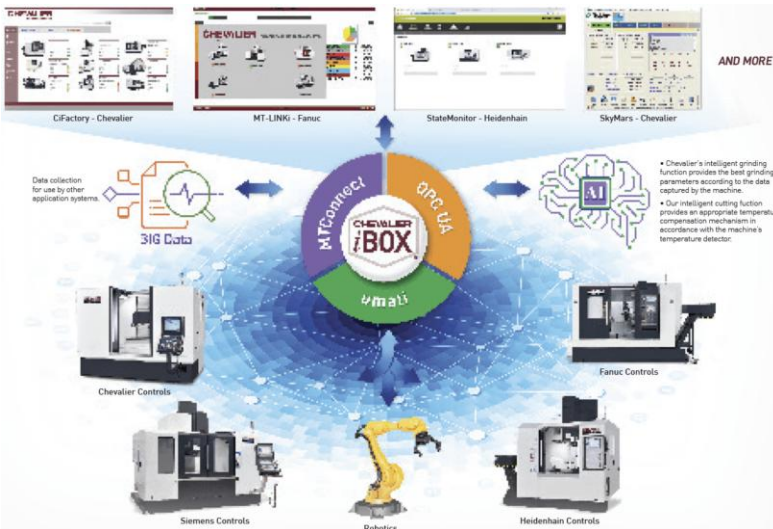
CHEVALIER
We shape your ideas.™



5-Axis Vertical Milling Center



High Speed Vertical Milling Center



Connections	
iBOX	1-4
	1-7
	1-10





HIGH SPEED PRECISION LATHES



LARGE SWING LATHES





SPECIFICATIONS

	C1330J	C1340J	C1430J	C1440J	C1530J	C1540J	C1550J
CAPACITY							
Height of Center	6.5" (165 mm)		7" (178 mm)		7.5" (190 mm)		
Swing Over Bed	13" (330 mm)		14.25" (360 mm)		15.25" (390 mm)		
Distance Between Centers	30" (750 mm)	40" (1000 mm)	30" (750 mm)	40" (1000 mm)	30" (750 mm)	40" (1000 mm)	50" (1250 mm)
Swing in Gap	19.5" (495 mm)		22" (560 mm)		24" (610 mm)		
Width in Front of Faceplate	6" (150 mm)		6" (150 mm)		6" (150 mm)		
Swing Over Cross Slide	7.5" (190 mm)		8.265" (215 mm)		9.5" (240 mm)		
Bedway Width	7.3" (185 mm)		10" (250 mm)		11" (270 mm)		
Bed Length	54.25" (1380 mm)	65" (1650 mm)	61.25" (1560 mm)	71.5" (1820 mm)	66.5" (1710 mm)	76.5" (1950 mm)	86.5" (2200 mm)
HEADSTOCK							
Spindle Bore	1.375" (35 mm)		1.625" (42 mm)		2.125" (54 mm)		
Spindle Nose (camlock)	D1-4		D1-5		D1-6		
Spindle Nose Bushing Taper	MT4		MT5		MT6		
Spindle Center	MT3		MT3		MT4		
Number of Spindle Speeds G/H	8	16 Optional	8	16 Optional	16		
Spindle Speed Range (rpm)	105 – 2000	53 – 2000	70 – 2000	35 – 2000	25 – 2000		
Number of Spindle Speeds VS	2		2		3		
Spindle Speed Range (rpm)	40 – 2500		35 – 2500		20 – 2500		
CROSS/TOP SLIDE							
Cross Slide Travel	7.5" (190 mm)		7.6" (195 mm)		9" (230 mm)		
Width of Cross Slide	4.72" (120 mm)		5.9" (150 mm)		6.47" (164.5 mm)		
Top Slide Travel	3.5" (90 mm)		4" (100 mm)		4.75" (120 mm)		
Width of Top Slide	2.99" (76 mm)		4.01" (102 mm)		4.01" (102 mm)		
TAILSTOCK							
Quill Travel	4.375" (110 mm)		4.75" (120 mm)		6.125" (155 mm)		
Quill Diameter	1.56" (40 mm)		2" (50 mm)		2.312" (58.5 mm)		
Quill Taper	MT3		MT3		MT4		
FEEDS AND THREADING							
Longitudinal Feed Range (in/rev)	0.0008 – 0.0410		0.0012 – 0.016		0.0015 – 0.04		
(mm/rev)	0.02 – 1.04		0.03 – 0.40		0.04 – 1.00		
Cross Feed Range (in)	approx. 1/3 longitudinal-feed		0.0004 – 0.0053		0.0008 – 0.02		
(mm)	approx. 1/3 longitudinal-feed		0.01 – 0.13		0.02 – 0.50		
Number of Inch Pitches	47		36		45		
Range of Inch Pitches	4 – 144 TPI		4 – 72 TPI		2 – 72 TPI		
Number of Metric Pitches	44		27		39		
Range of Metric Pitches	0.2 – 14 mm		0.4 – 7 mm		0.2 – 14 mm		
Number of Diametrial Pitches	30		21		21		
Range of Diametrial Pitches	4 – 44 DP		8 – 44 DP		8 – 44 DP		
Number of Module Pitches	24		18		18		
Range of Module Pitches	0.3 – 3.5 mm		0.3 – 3.5 mm		0.3 – 3.5 mm		
MOTOR HP							
G/H Spindle Motor	3 Hp		5 Hp		7.5 Hp		
G/H Spindle Motor Two Speed Opt.	3/1.5 Hp		5/3 Hp		—		
Variable Speed Motor	3 Hp		5 Hp		7.5 Hp		
Rapid Feed Motor	—		—		—		
Coolant Motor	1/8 Hp		1/8 Hp		1/8 Hp		
DIMENSIONS							
Shipping L x W x H	68"x36"x65"	76"x36"x65"	72"x36"x66"	84"x36"x66"	77"x40"x69"	87"x40"x69"	99"x40"x69"
Shipping Gross Weight Lbs	1760	1914	2200	2420	2640	2970	3300
Machine L x W x H	65"x42"x62"	76"x42"x62"	63"x35"x50"	74"x35"x50"	77"x40"x50"	87"x40"x50"	97"x40"x50"
Machine Net Weight Lbs	1474	1584	1870	1980	2200	2530	2860





COSEN SAWS
PRODUCTION LINE

HORIZONTAL



C-260NC | Fully Automatic Scissor Style

	90°	45°	60°		
●	10.2"	--	--	Bundle Width.....	7.4"-11"
■	10.2"x11.8"	--	--	Bundle Height.....	1.9"-4.7"
				Blade.....	1.25"
				Motor.....	5HP
				Weight.....	3,218 lbs
				Bed Height.....	28.9"
				Floorspace.....	84"x86"x51"



C-Tech C2 | Fully Automatic Enclosed Dual Post

	90°	45°	60°		
●	10.2"	--	--	Bundle Width.....	5.1"-7.8"
■	10.2"x11.8"	--	--	Bundle Height.....	1.9"-4.9"
				Blade.....	1.25"
				Motor.....	5HP
				Weight.....	3,509 lbs
				Bed Height.....	31.4"
				Floorspace.....	80"x99"x64"



C-320NC | Fully Automatic Dual Column

	90°	45°	60°		
●	12.5"	--	--	Bundle Width.....	7.4"-11.8"
■	12.5"x14.9"	--	--	Bundle Height.....	2.7"-5.5"
				Blade.....	1.25"
				Motor.....	5HP
				Weight.....	3,765 lbs
				Bed Height.....	31.1"
				Floorspace.....	82"x93"x68"



G320 | Fully Automatic Dual Column

	90°	45°	60°		
●	12.7"	--	--	Bundle Width.....	7.4"-11.8"
■	12.7"x14.9"	--	--	Bundle Height.....	2.7"-5.5"
				Blade.....	1.25"
				Motor.....	5HP
				Weight.....	3,880 lbs
				Bed Height.....	31.4"
				Floorspace.....	88"x94"x66"



C-325NC | Fully Automatic Dual Column

	90°	45°	60°		
●	12.7"	--	--	Bundle Width.....	7.4"-11.8"
■	12.7"x14.9"	--	--	Bundle Height.....	2.7"-5.5"
				Blade.....	1.25"
				Motor.....	5HP
				Weight.....	3,836"
				Bed Height.....	28.7"
				Floorspace.....	82"x91"x53"



C-510MNC | Fully Automatic Scissor Style

	90°	45°	60°		
●	14.1"	12.9"	7.8"	Bundle Width.....	7"-17.7"
■	12.9"x20"	12.9"x12.9"	13"x7.8"	Bundle Height.....	7"-9.4"
				Blade.....	1.25"
				Motor.....	5HP
				Weight.....	4,684 lbs
				Bed Height.....	31.4"
				Floorspace.....	104"x129"x66"



NC-510MG | Fully Automatic Scissor Style

	90°	45°	60°		
●	14.1"	12.9"	7.8"	Bundle Width.....	20"
■	12.9"x20"	12.9"x12.9"	12.9"x7.8"	Bundle Height.....	0.2"-14.8"
				Blade.....	1.25"
				Motor.....	5HP
				Weight.....	4,684 lbs
				Bed Height.....	31.4"
				Floorspace.....	101"x123"x86"





**COSEN SAWS
PRODUCTION LINE**

HORIZONTAL



C-Tech C3 | Fully Automatic Enclosed Dual Post

	90°	45°	60°		
●	14.1"	--	--	Bundle Width.....	7.4"-13.7"
■	14.1"x15.7"	--	--	Bundle Height.....	3.9"-7"
				Blade.....	1.5"
				Motor.....	7.5HP
				Weight.....	5,507 lbs
				Bed Height.....	32.9"
				Floorspace.....	90"x143"x79"



C-420NC | Fully Automatic Dual Column

	90°	45°	60°		
●	16.5"	--	--	Bundle Width.....	7.4"-14.1"
■	16.5"x16.5"	--	--	Bundle Height.....	3.9"-7.0"
				Blade.....	1.5"
				Motor.....	10HP
				Weight.....	5,183 lbs
				Bed Height.....	28.9"
				Floorspace.....	95"x101"x70"



C-650MNC | Fully Automatic Scissor Style

	90°	45°	60°		
●	16.5"	15.7"	9.8"	Bundle Width.....	7"-25.5"
■	14.9"x25.5"	14.9"x15.7"	14.9"x9.8"	Bundle Height.....	0.5"-17.5"
				Blade.....	1.5"
				Motor.....	7.5HP
				Weight.....	6,344 lbs
				Bed Height.....	29.5"
				Floorspace.....	112"x123"x75"



C-460NC | Fully Automatic Dual Column

	90°	45°	60°		
●	18.1"	--	--	Bundle Width.....	9.8"-14.3"
■	18.1"x18.1"	--	--	Bundle Height.....	3.5"-9"
				Blade.....	1.5"
				Motor.....	10HP
				Weight.....	5,317 lbs
				Bed Height.....	33.8"
				Floorspace.....	98"x104"x62"



C-520NC | Fully Automatic Dual Column

	90°	45°	60°		
●	20.4"	--	--	Bundle Width.....	9.8"-18.5"
■	20.4"x22"	--	--	Bundle Height.....	5.9"-12.4"
				Blade.....	2"
				Motor.....	10HP
				Weight.....	8,404 lbs
				Bed Height.....	30.1"
				Floorspace.....	87"x142"x84"



C-780FNC | Fully Automatic Dual Column

	90°	45°	60°		
●	21.6"	--	--	Bundle Width.....	0.1"-30.8"
■	21.6"x30.7"	--	--	Bundle Height.....	1.3"x21.9"
				Blade.....	2"
				Motor.....	10HP
				Weight.....	10,608 lbs
				Bed Height.....	29.9"
				Floorspace.....	82"x161"x101"

*Longbed version also available



C-620NC | Fully Automatic Dual Column

	90°	45°	60°		
●	24.4"	--	--	Bundle Width.....	0.1"-29.9"
■	24.4"x29.9"	--	--	Bundle Height.....	21.6" or 24.8"
				Blade.....	2"
				Motor.....	10HP
				Weight.....	10,630 lbs
				Bed Height.....	29.7"
				Floorspace.....	109"x162"x101"



C-800NC | Fully Automatic Dual Column

	90°	45°	60°		
●	31.4"	--	--	Bundle Width.....	11"-32.4"
■	31.4"x32.4"	--	--	Bundle Height.....	9.6"-31.4"
				Blade.....	2.625"
				Motor.....	15HP
				Weight.....	17,526 lbs
				Bed Height.....	25"
				Floorspace.....	83"x166"x112"





Standard Chucks



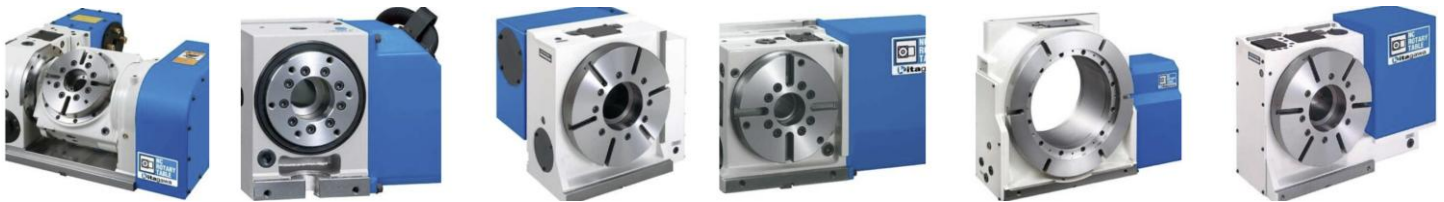
Collet Chucks



Manual Chucks



NC rotary table



Angle Heads



Angle Heads Solid Series



Angle Heads Modular Series



Angle Heads Modular NSK Mini Series



Angle Heads Hi-Speed Shanks for NSK Mini Series



Angle Heads Half Universal Series



Angle Heads Half-Series Tapping



Angle Heads Half-Series Drilling



Angle Heads Half Mini Series



Angle Heads Flange Series



Angle Heads Accessories and More

Slimline Shrink-Fit Tool Holders



Slimline Shrink-Fit System Heaters



Slimline Shrink-Fit System Regular & Slim Adapters



Slimline Shrink-Fit System Mono & Mono Curve Series



Slimline Shrink-Fit System Master Holders



Slimline Shrink-Fit System HSK Adapters



Slimline Shrink-Fit System Flush & Straight Adapters



**EMUGE
FRANKEN**



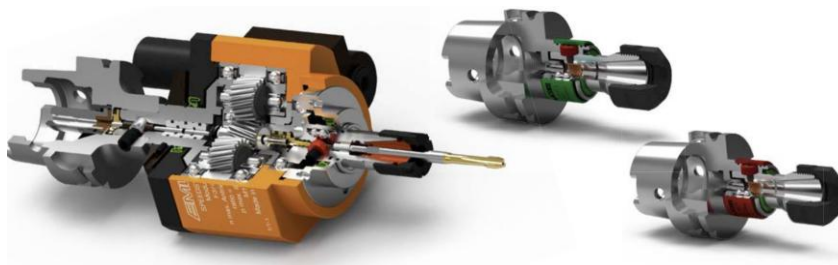
Thread Gages



Tool Holders



Clamping Technology



BIG
BIG DAISHOWA

CNC Tool Holders

CNC Tool holders are the interface between the machine spindle and the cutting tool. BIG DAISHOWA offers a wide variety of shanks common to the market.



Cutting Tools

BIG DAISHOWA offers a full line of high-precision cutting tools. Our cutting tools are the superior choice for increasing production capacity and quality.



CNC Boring Tools

The precision of KAISER modular CNC boring tools delivers measurable performance advantages—significantly reducing costs and cycle times.



Angle Heads & Speed Increasers

Optimize your spindle with BIG DAISHOWA's Angle Heads & Speed Increasers. Harness your machine's current capabilities by adding an Angle Head.



Workholding

Our CNC workholding solutions provide flexibility and functionality for 5-axis and 5-sided machining, maximizing benefits through efficient workholding.



Precision Measuring Instruments

Precision measuring instruments and equipment help make your work flow faster, more accurate, and more efficient.



HAIMER®

Quality Wins.

 TOOL HOLDERS	 GRINDING WHEEL ADAPTERS	 TOOLS
 BALANCING TECHNOLOGY	 SHRINKING TECHNOLOGY	 PRESETTING TECHNOLOGY
 MEASURING TECHNOLOGY	 TOOL MANAGEMENT	 ACCESSORIES

SHRINK FIT MACHINE



TOOL PRESETTER





Maximize holemaking applications with our wide selection of drills. From solid carbide drills to modular drills, our tooling solutions ensure precision and efficiency across a variety of materials for every drilling task.



Get the most comprehensive milling solutions for any job shop task. From solid carbide end mills to indexable milling cutters, our tools ensure high-quality performance in slotting, face milling, ramping and more.



Advance machining operations with tooling systems that ensure precision. Explore our full range of tool holders and adapters that make changing tools easy with every job.



Enhance precision and performance in every inside and outside diameter turning application. From grooving and cut-off to profiling and specialty, our tools will improve output, enhance component quality.

TURNING



SOLID END MILLING



MINING



CONSTRUCTION



CARBIDE WEAR PARTS



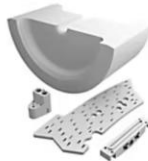
HOLEMAKING



TOOL HOLDERS & ADAPTERS



BORON NITRIDE SOLUTIONS



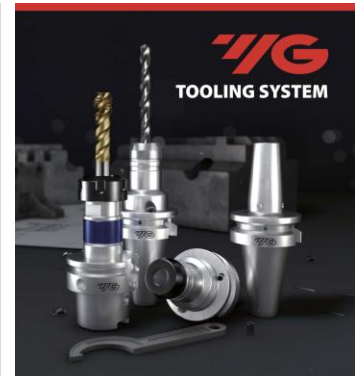
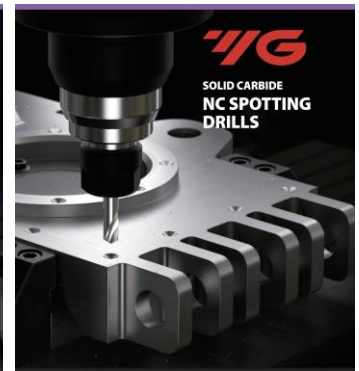
CONFORMA CLAD COATINGS



ADDITIVE MANUFACTURING



YG-1



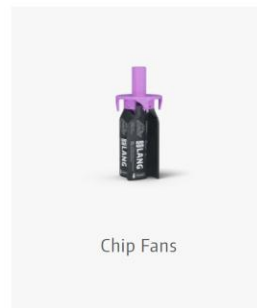
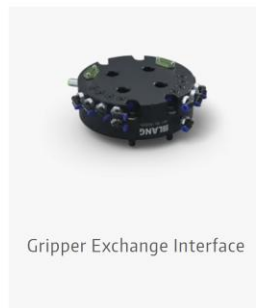
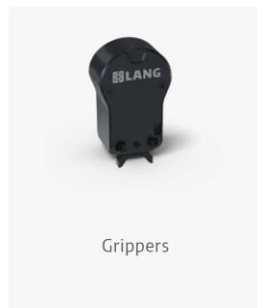
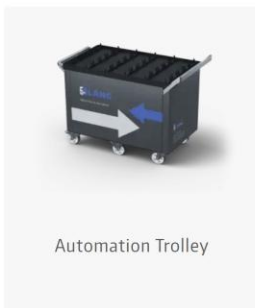
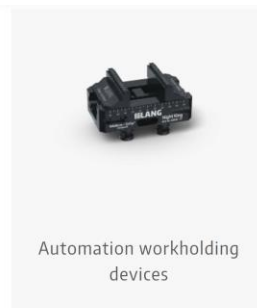
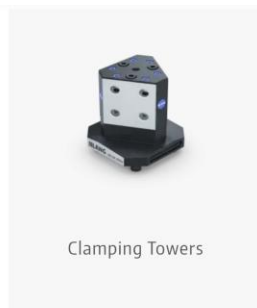
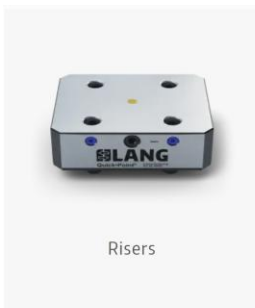
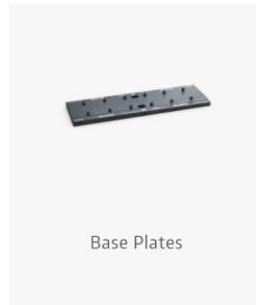
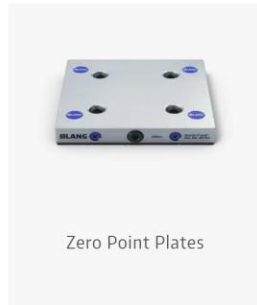
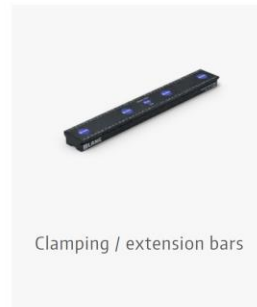
Maximize productivity in a wide range of materials while maximizing value. Exceptional world-class quality and performance driven - that's YG-1.

YG
yg1usa.com





Your expert in workholding and machine tool automation



LYNDEX-NIKKEN

TOOL HOLDERS AND ACCESSORIES



TOOL HOLDERS AND ACCESSORIES



COLLETS



ANGLE HEADS AND SPEEDERS



LIVE AND STATIC TOOLS



ROTARY TABLES



PRESETTERS AND MEASURING EQUIPMENT



SHRINK FIT UNITS



WORK HOLDING

MACHINE TENDING



EZ-AUTOCART



EZCOB



EZBOT



EZTEND

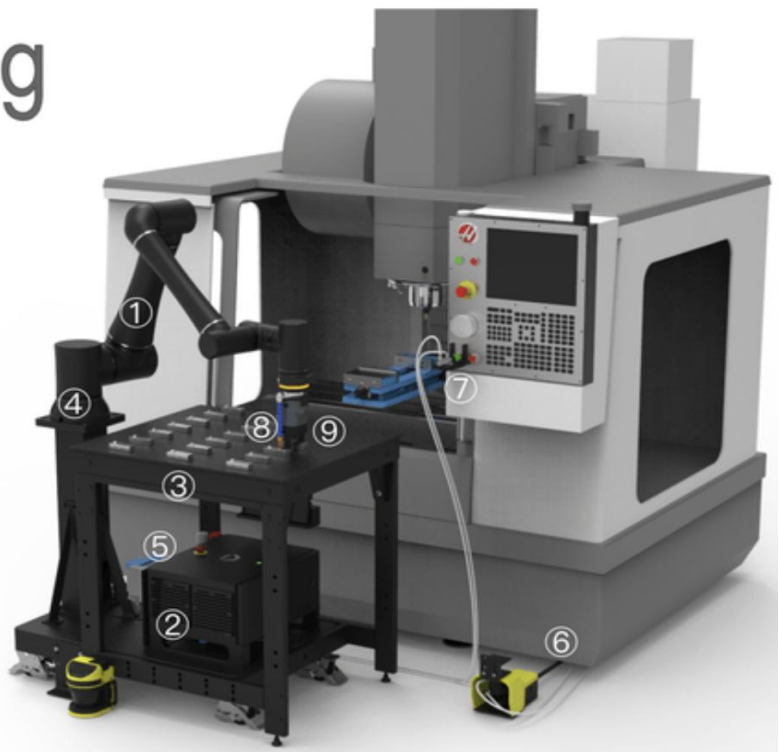


STANDARD BOTS



Machine Tending

①	ROI	\$37,000
②	Control Box	-
③	Table	\$2,500
④	Base + Mounting	\$2,500
⑤	Pneumatics (Control + Pusher)	\$4,500
⑥	Pedal Pusher	Incl. in ⑤
⑦	Button Pusher	Incl. in ⑤
⑧	EOAT Blow Off	\$250
⑨	Gripper	\$5,000



Starting at \$47,000



EffiBOT

THE FUTURE OF MATERIAL TRANSPORT & OPERATIONAL EFFICIENCY HAS ARRIVED.

Effidence Robotic Logistic Solutions are dedicated to improve logistics performance in warehouses, production facilities, and industrial environments. These solutions offset rising fulfillment costs and address many inventory management issues, while they **improve profitability, productivity, and accuracy.**



A BEST-IN-CLASS LOGISTICS SOLUTION AT AN AFFORDABLE PRICE POINT

The **EffiBOT (AMR)** is a versatile autonomous mobile robot that allows both collaborative and autonomous use. This versatility, paired with cutting edge features and a durable design that permits use in all-weather environments, makes the EffiBOT an ideal solution to introduce automation or to further your facility's automation efforts. With inflation placing upward pressure on wages and operating costs, Effidence Robotic Logistic Solutions provide a cost effective means to a more efficient and sustainable operation.



THE INDUSTRY-LEADER IN PERFORMANCE & SAFETY

The EffiBOT's compact, patented design includes:

IP54 Protection:
all components are well protected, allowing indoor & outdoor use

Length: 47.25"/35.4"
(1200mm/900mm)

Width: 236" (600mm)

Impressive Load Capacity:
carries up to 660 lbs.,
tows up to 1,100 lbs.*
(*tow accessories required)

Height: 21.6"
(550mm)

360° Sensor Architecture
with enhanced navigation

Enhanced Safety Features, Including Auto Stop:
from protective bumpers and high-visibility lighting, to auto-stop technology should a person or object cross its immediate path, this robot was designed to prevent collisions & ensure safe transport

4 Directional, Heavy Duty Wheels:
provide high maneuverability –
Uneven floors and up to 30% slopes
are not a limit

2 VERSATILE OPERATING MODES



A 'FOLLOW-ME' ROBOT

Utilizing 'follow-me' functionality, EffiBOT follows a picking operator and no cart is pulled or pushed manually, providing an obvious productivity gain.



A FULL AUTONOMOUS ROBOT

Full autonomous handling allows automatic parts delivery to assembly line, and material transfer between various locations.



EffiBOT

BUILD A MORE COST EFFECTIVE & SUSTAINABLE OPERATION

We proudly distribute the full line of Effidence Robotic Logistic Solutions, and can partner with you to find the right automated technology for your facility. With options ranging from compact material transport robots to large-scale robotized tuggers and pallet stackers, we can provide solutions that will streamline your operations and logistics.



EffiBOT XS (AMR)

- fully autonomous
- 360° sensor architecture
- 660 lb. load capacity
- small footprint & most compact in series



EffiBOT (AMR)

- follow me and autonomous mode
- 360° sensor architecture
- advanced navigation
- 660 lb. load capacity
- 1,100 lb. tow capacity
- indoor/outdoor IP54 protection



EffiBOT-T Tugger

- follow me and autonomous mode
- 360° sensor architecture
- advanced navigation
- 5 ton tow capacity



EffiBOT-P Stacker

- follow me and autonomous mode
- 360° sensor architecture
- advanced navigation
- 2,900 lb. load & lift capacity
- 11.5' autonomous picking height capacity



ROYAL
PRODUCTS



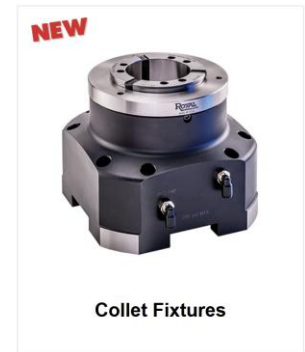
Filtermist Mist Collectors



Royal MTC™ Multi-Tasking Chuck



CNC Collet Chucks



Collet Fixtures



CNC I.D. Workholding



Quick-Grip for Manual Lathes



Quick-Grip™ Collets



Royal SLV™ Sturdy Little Vise



Royal Z-Lock™ Zero-Point Workholding System



Live Centers



Dead Centers



Rota-Rack® Parts Accumulators



CNC Bar Pullers



Albrecht Precision Drill Chucks



Deburring Tools



Machine Mounts





TENDO hydraulic expansion toolholder



TRIBOS polygonal toolholders



SINO-R expansion toolholders



CELSIO heat shrinking toolholder



Chuck jaws



Lathe chucks



Stationary lathe chucks



Quick-change pallet systems



Direct Workpiece Clamping Systems



Clamping force blocks



Electromechanical Clamping Systems



Manual clamping systems



Tombstones



Magnetic clamping technology



Vacuum clamping technology



Configuration tools





Aggregate Heads



Toolholding and Accessories



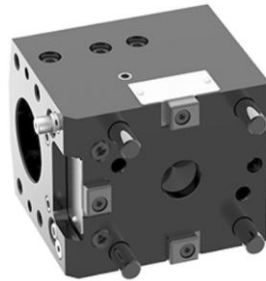
Setup Equipment

EPPINGER

Driven Tool Holders

Static Tool Holders

PRECI-FLEX[®] Adapters





Dust Collectors



Coolant and Oil Mist Collectors

