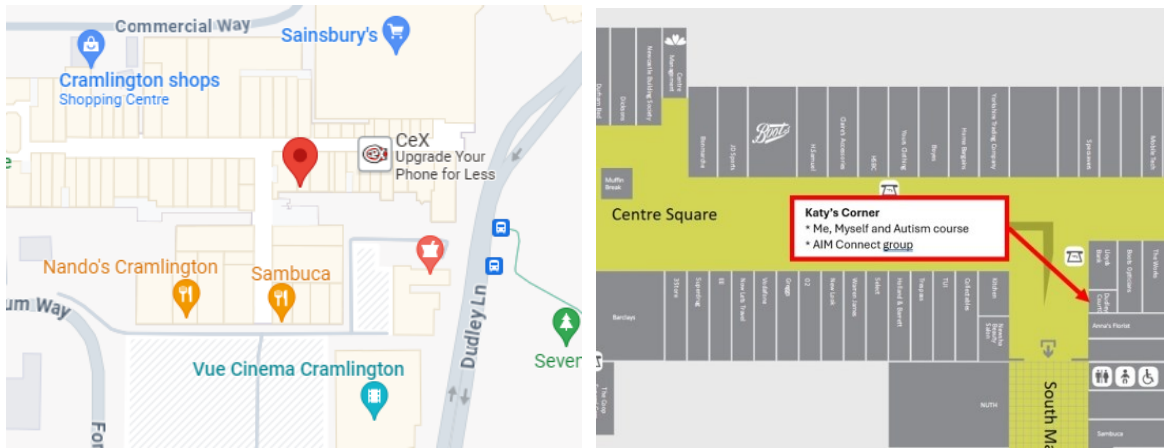




Visiting AIM at Katy's Corner

Address: Suite 12 Dudley Court, 1st Floor Manor Walks South, Dudley Lane, Cramlington, NE23 6QW



Dudley Court Office Suites entrance is located to the right side of Lloyds Bank, next to the cash points. (please see foot of page for lift access information)



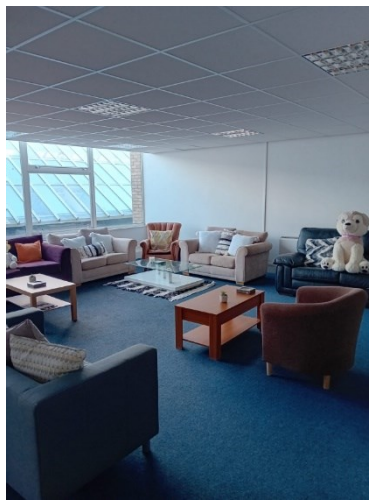
Stairwell



Hallway



Katy's Corner Room (on the left hand side)



Free Parking

There are over 1,500 parking spaces across 3 different car parks. Parking is FREE for up to 4 hours.

East Mall Car Park (Sainsbury's) Postcode: NE23 6UW

West Mall Car Park (ASDA) Postcode: NE23 6YB

South Mall Car Park (Vue Cinema) Postcode: NE23 6UL

By Taxi

Manor Walks has a taxi drop off and pick up point located in the East Car Park, adjacent to Sainsbury's, or at the West Car Park, outside Asda.

By Bus

There are a number of bus routes throughout Cramlington, for detailed timetables and up to date information please visit Arriva or Go North East. For impartial travel advice contact Traveline on 08712 002233.

By Train

Manor Walks is situated 5 minutes walk away from Cramlington Railway Station. For all timetable details telephone 08457 484950 or search National Rail for further information.

If you need any further support regarding your visit, please do not hesitate to get in touch with us by telephone 0191 5700047 or email contact@autisminmind.com

Lift Access

For lift Access to Katy's Corner – At the Sainsburys end of Manor Walks, follow the path to the left of the centre entrance.



The lift is located just inside of the double doors. Take the lift to the first floor. Katy's Corner is along the corridor on the right.