

Annual Report

2022



ROBESON COUNTY
CHURCH & COMMUNITY CENTER

Program Recap



235 households
awarded rent/utility
assistance



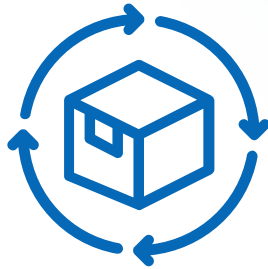
1070 households
served through our
diaper bank



300 students
received school
supplies through our
annual school
supply drive



478 children
received toys and
brand new coats
through the Brighter
Christmas Program



16,498 families
served with
emergency food
boxes

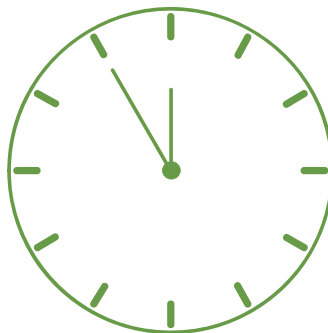


43,911 pounds of
food donated

Volunteers



3 student interns



4348 hours
donated



\$54,350 dollars saved
through volunteer
hours

Funding Sources

412 Total Donors



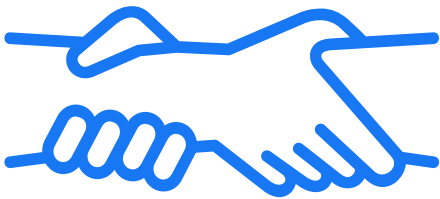
\$212,487

Home Store Sales



\$133,815

Foundations & Trusts



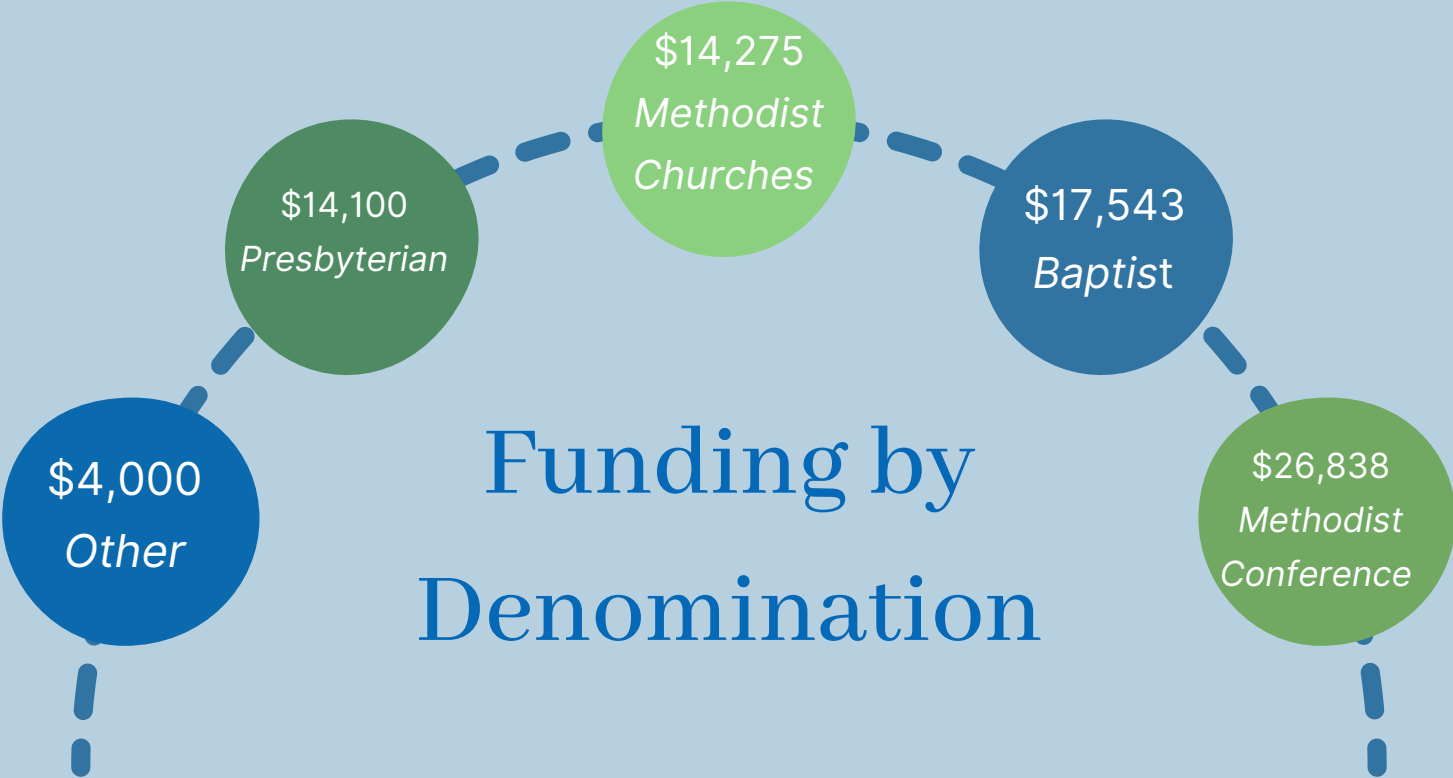
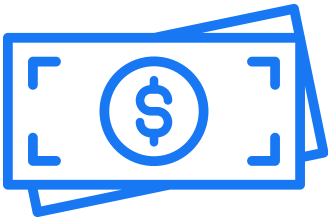
Individual Donations

\$21,028



Fundraising

\$25,019



<<New & Upcoming>>

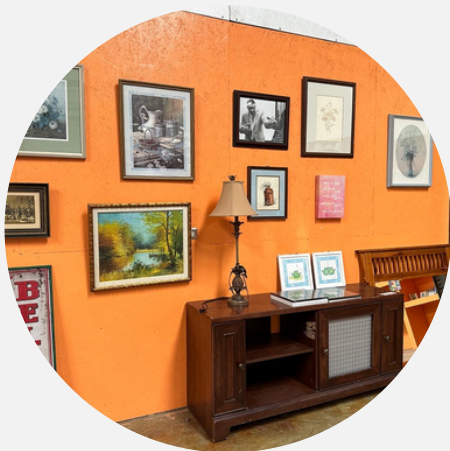
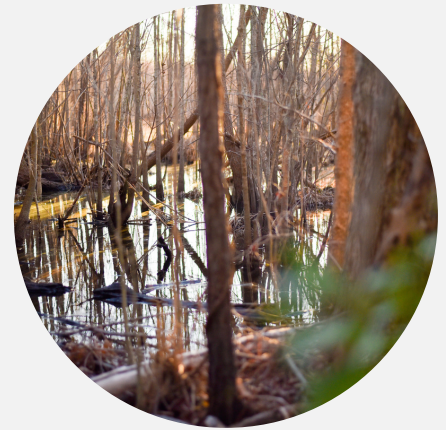


Transitional Housing

In the wake of a rising population of unhoused individuals in Robeson County, the Center has acquired over \$350,000 in funding and an official endorsement from the City of Lumberton for the implementation of a transitional housing program.

Flood Mitigation Advocacy

As Robeson County continues to recover from two bouts of historic flooding, the Center has partnered with local environmental professionals of Alliance Integrated Solutions to plan and fund a comprehensive flood mitigation effort.



Home Store Expansion

We are thrilled to announce that The Home Store will be expanding to a second location in 2023 with more details to come!



Robeson County Church and Community Center



robesoncenter

RobesonTogether.org